

## PUBLIC UTILITIES COMMISSION

505 VAN NESS AVENUE

SAN FRANCISCO, CA 94102-3298



September 9, 2009

Janine Watkins-Ivie, Director  
Regulatory Policy and Affairs  
Southern California Edison (SCE)  
P.O. Box 800  
Rosemead, CA 91770

**CPUC File No.: E2009-16**

**SUBJECT:** General Order (GO) 165 Compliance Audit of Southern California Edison's Orange District

On behalf of the Utilities Safety and Reliability Branch of the California Public Utilities Commission (CPUC), Cynthia Lee and I conducted an electric audit of SCE's Orange District from August 3 -7, 2009. The audit included a review of your recent inspection records and a follow-up inspection in areas where SCE recently performed detailed inspections of overhead and underground facilities.

During the follow-up inspection, I found that SCE did not document all GO 95 and 128 violations at the time of its inspection. Attached to this letter is a list of the violations I observed during the follow-up inspections.

Please advise me within 30 days of corrective measures taken by SCE regarding the above violations. If you have any questions, please contact me at (213) 576-5719.

Sincerely,

A handwritten signature in black ink, appearing to read "Jerry Palo Jr.", with a long horizontal flourish extending to the right.

Jerry Palo Jr.  
Utilities Engineer  
Utilities Safety and Reliability Branch  
Consumer Protection and Safety Division

Enclosure: Compliance Audit Summary

## Compliance Audit Summary

The following GO 95 violations were found during the field portion of the audit and were not included in the most recent inspection records. The facilities were inspected in 2009.

### 1. GO 95, Rule 31.1 Design, Construction and Maintenance

“Electrical supply and communication systems shall be designed, constructed, and maintained for their intended use, regard being given to the conditions under which they are to be operated, to enable the furnishing of safe, proper, and adequate service.

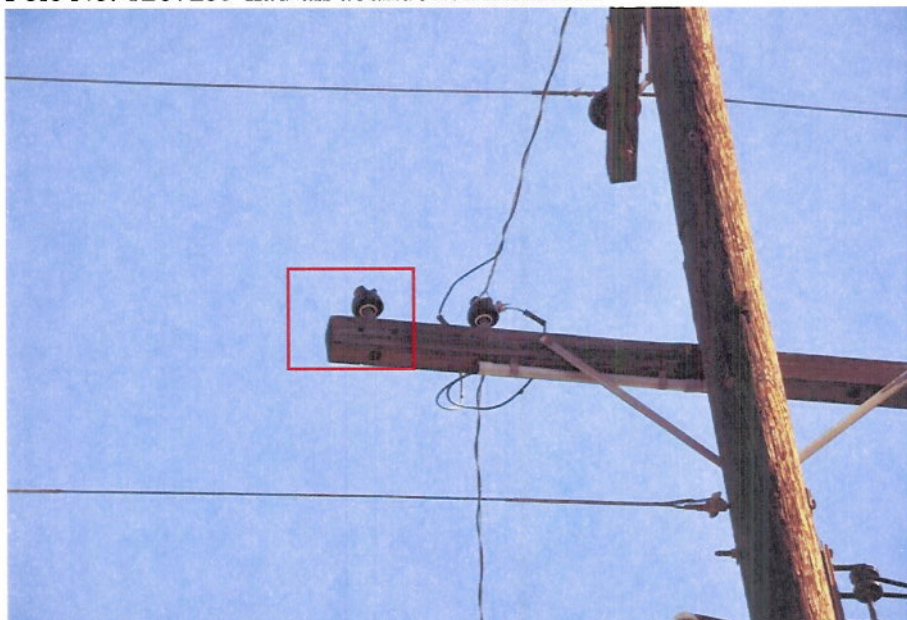
For all particulars not specified in these rules, design, construction, and maintenance should be done in accordance with accepted good practice for the given local conditions known at the time by those responsible for the design, construction, or maintenance of [the] communication or supply lines and equipment.”

Pole No. 1107654E had a slack down guy at 7485 Fillmore Dr., Buena Park.

### 2. GO 95, Rule 31.6 Abandoned Lines

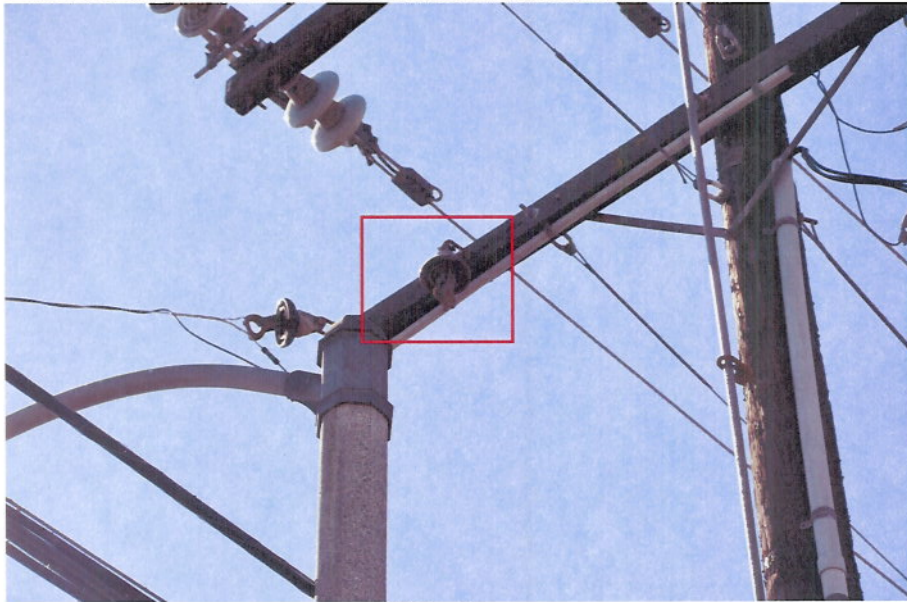
“Lines or portions of lines permanently abandoned shall be removed by their owners so that such lines shall not become a public nuisance or a hazard to life or property. For the purposes of this rule, lines that are permanently abandoned shall be defined as those lines that are determined by their owner to have no foreseeable future use.”

- a) Location: 7790 Pavonia Circle, Buena Park (**Picture 1**)  
Pole No. 1267259 had an abandoned insulator.



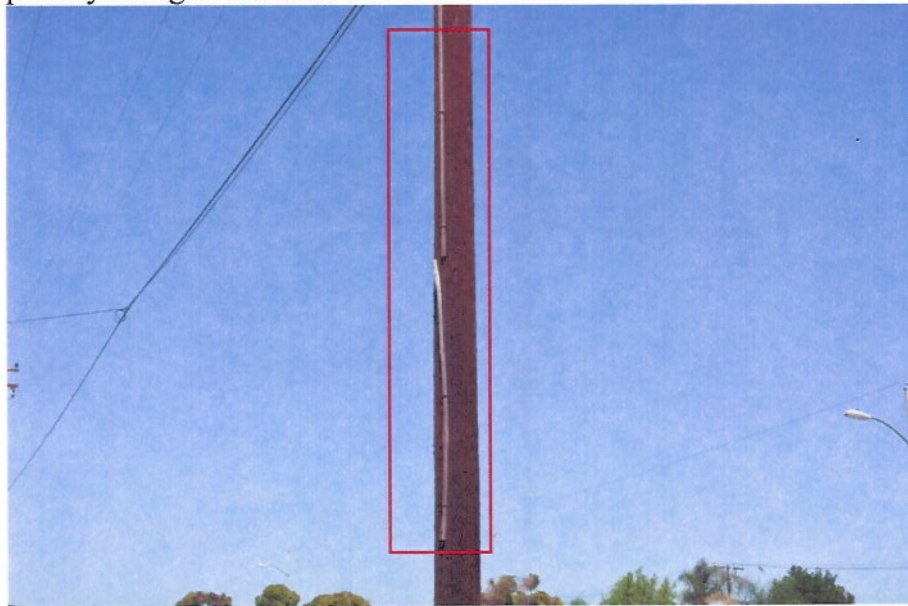
Picture 1

- b) Location: 8575 Knott Ave., Buena Park (**Picture 2**)  
Pole No. 1361764E had an abandoned insulator.



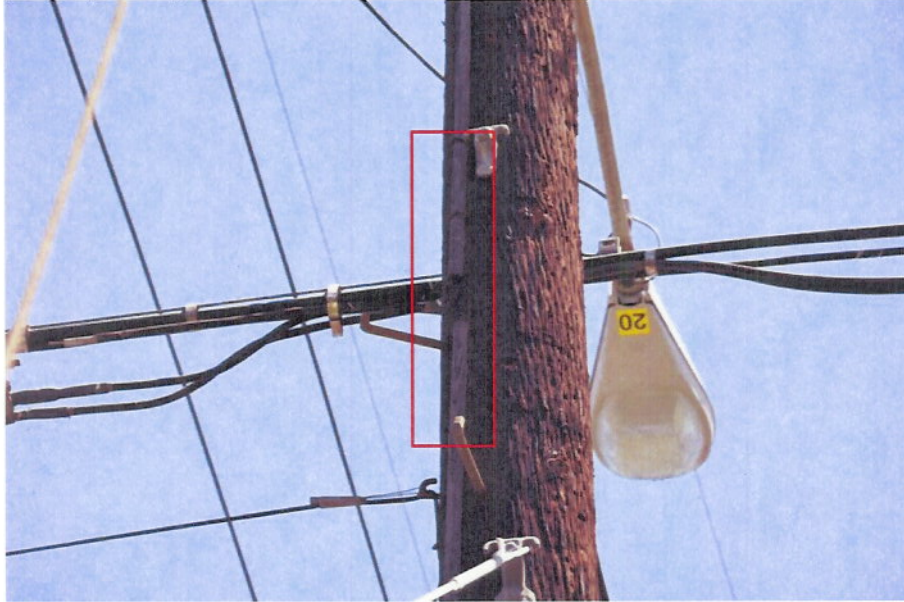
Picture 2

- c) Location: c/o Crescent Ave. and San Adriano St., Buena Park (**Picture 3**)  
Pole 1952404E had an abandoned ground moulding and was inspected on  
March 2, 2009. The work order was cancelled on June 17, 2009 and was not  
added to the new Distribution Inspection and Maintenance Program (DIMP).  
\*All violations found from the previous inspection program must be given a  
priority rating in the latest DIMP.\*



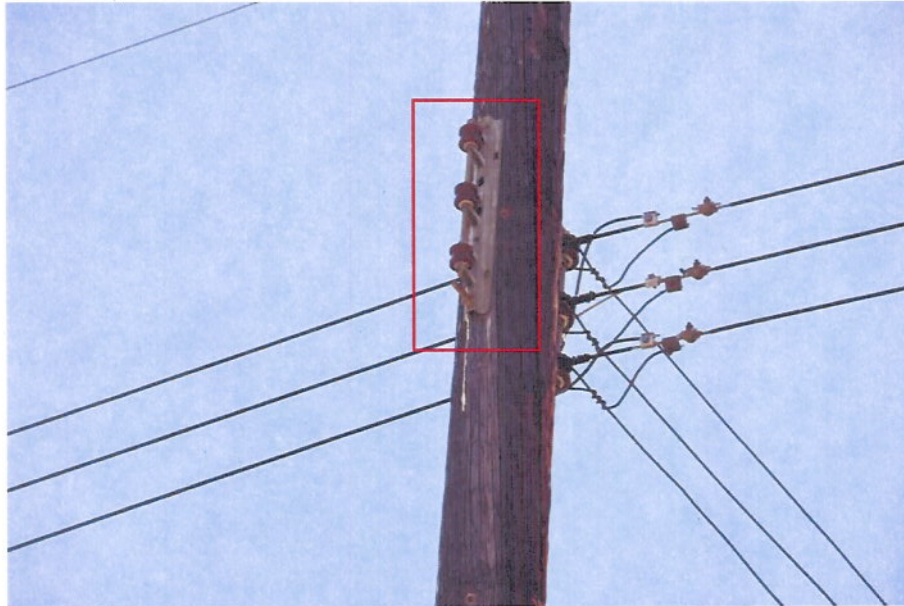
Picture 3

- d) Location: 8571 Western Ave., Buena Park (**Picture 4**)  
Pole No. 1592427E had an abandoned ground moulding and was inspected on March 2, 2009. The work order was cancelled on May 29, 2009 and was not added to the new Distribution Inspection and Maintenance Program (DIMP).  
\*All violations found from the previous inspection program must be given a priority rating in the latest DIMP.\*



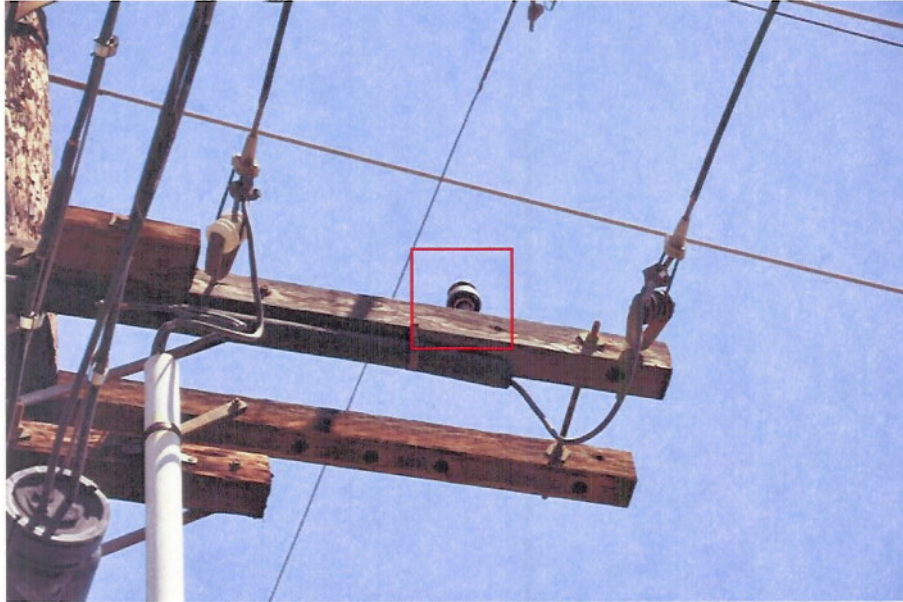
Picture 4

- e) Location: c/o Fillmore Drive and Madison Ave., Buena Park (**Picture 5**)  
Pole No. 110765 had an abandoned triplex rack. The pole was inspected on March 2, 2009.



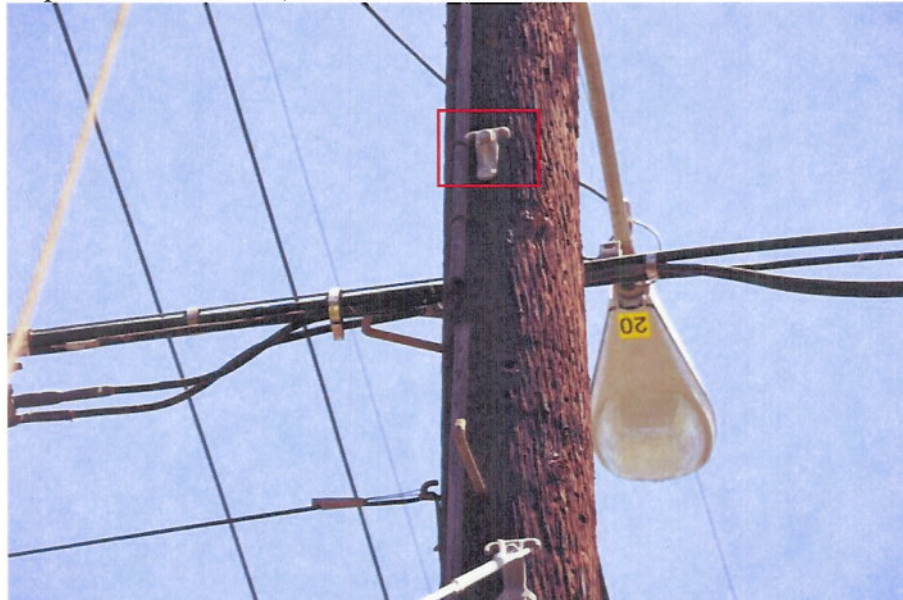
Picture 5

- f) Location: 111 Western Ave., Anaheim (**Picture 6**)  
Pole No. 1592427E had an abandoned insulator. The pole was inspected on March 2, 2009.



Picture 6

- g) Location: 8571 Western Ave., Buena Park (**Picture 7**)  
Pole No. 1592427E had an abandoned guy attachment. The pole was inspected on March 2, 2009.



Picture 7

**3. GO 95, Rule 38 Minimum Clearances of Wires from Other Wires**

“The minimum vertical, horizontal or radial clearances of wires from other wires shall not be less than the values given in Table 2...”

Pole No. 1077404E had two midspan guy wires in contact with one another at 211 Western Ave., Buena Park. The pole was inspected on March 2, 2009.

**4. GO 95, Rule 51.6A High Voltage Marking of Poles states:**

“Poles which support line conductors of more than 750 volts shall be marked with high voltage signs. This marking shall consist of a single sign showing the words “HIGH VOLTAGE”, or pair of signs showing the words “HIGH” and “VOLTAGE”, not more than six (6) inches in height with letters not less than 3 inches in height. A pair of signs may be stacked to a height of no more than 12 inches. Such signs shall be of weather and corrosion-resisting material, solid or with letters cut out there from and clearly legible.”

The following poles had damaged or missing high voltage signs:

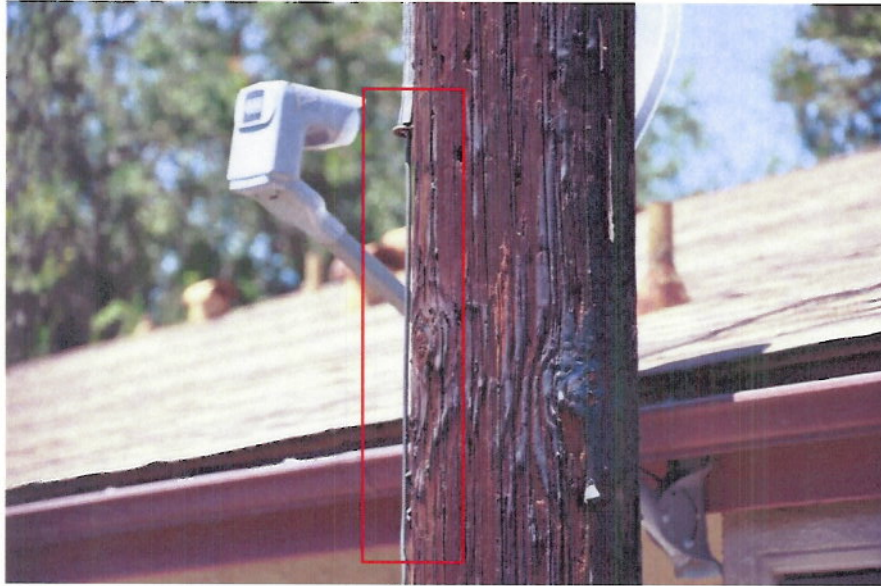
- 1952404E
- 1847006E
- 334071E
- 4322837E
- 1077406E
- 1023419E

**5. GO 95, Rule 54.6B Ground Wires**

“That portion of the ground wires attached on the face or back of wood crossarms or on the surface of wood poles and structures shall be covered by a suitable protective covering (see Rule 22.8)...”

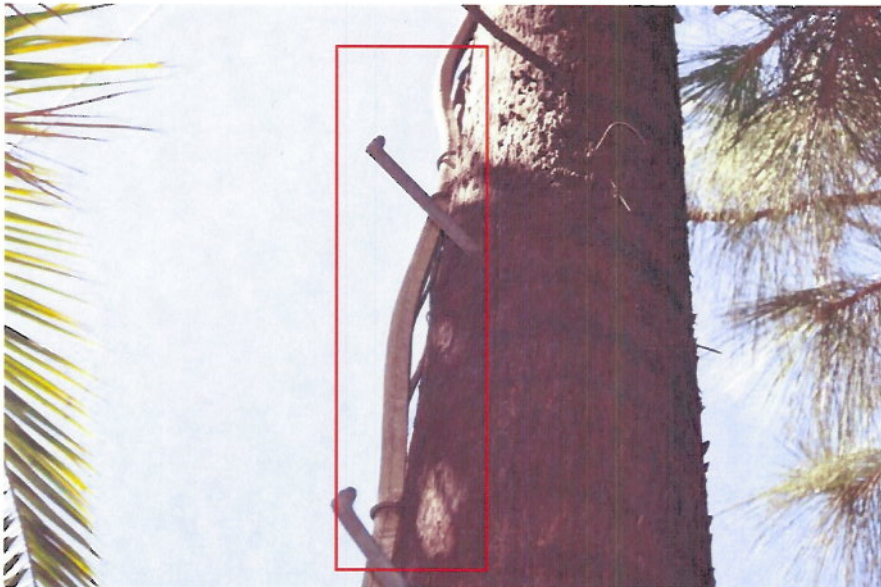
The following poles had damaged or missing ground mouldings:

- a) Location: 8571 Western Ave., Buena Park (**Picture 8**)  
Pole No. 1628302E had an exposed ground moulding.



**Picture 8**

- b) Location: 801 Las Palmas Dr., Fullerton (**Picture 9**)  
Pole No. 1024036E had a damaged ground moulding.



**Picture 9**