

SCE VALLEY SOUTH SUBTRANSMISSION PROJECT

Date: May 14, 2020
To: Eric Chiang, Project Manager, CPUC
From: Vida Strong, Aspen Project Manager
Subject: Monitoring Report #27: April 26 to May 9, 2020

Introduction

This report provides a summary of the construction and compliance activities associated with Southern California Edison’s (SCE) Valley South Subtransmission Project (VSSP). Project components include:

- Installation and upgrades of the 115 kV subtransmission line
- Modification of some existing 12 kV and 33 kV distribution facilities
- Telecommunication equipment installation and upgrades
- Installation of new components at the Valley Substation

CPUC Environmental Monitor (EM): CPUC EM, Rosina Goodman, was onsite April 28 and May 6, 2020.

CPUC Notices to Proceed (NTPs)

Table 1 summarizes the NTPs issued for VSSP construction. No additional NTPs are required.

Table 1 - NTPs

NTP #	Date Requested	Date Issued	Description
NTP #1	12/11/18	01/04/19	Use of 2 Material Yards and Vegetation Management at six locations along the right-of-way.
NTP #2	02/26/19	03/25/19	Construction of Project components not subject to final engineering due to use of required insulated conductor in high fire hazard areas, Segments 1 and 2.
NTP #3	05/16/19	06/07/19	Poles subject to final engineering due to required use of insulated conductor in high fire hazard areas.

Construction & Compliance

To date, all pre-compliance materials associated with NTPs #1, #2, and #3 that have been submitted have been approved. Construction activities associated with NTP #1 began on February 4, 2019. Construction activities associated with NTP #2 began on May 6, 2019. Construction activities associated with NTP #3 began on June 18, 2019.

A summary of construction and compliance activities for the subject reporting period is provided below.

Summary of Construction Activity

1. Wilson Construction is currently using the Valley Substation Contractor Yard for mobile office headquarters and equipment and material storage. Activities associated with the yard included delivery of materials including rebar cages, tubular steel poles (TSPs), and conduit.
2. BMP inspections and maintenance occurred at TSP foundation locations in Segment 1.
3. Wilson Construction activities on Segment 1 included: Hauling, framing, and setting light weight steel poles at Construction Areas UNK49 through UNK53, UNK55, UNK56, and guy stub pole 4936631E; setting TSP at Construction Area UNK47 (see Photo 1); wire stringing activities at Construction Areas UNK46 through UNK95 (see Photo 2); reconductoring activities from pole 1834185E to Construction Area UNK21, and pole 18305100E to Construction Area UNK23; distribution cutover activities at Construction Areas UNK24 through UNK36 (see Photo 3); slope repair and landscaping at vault south of Construction Area UNK07; rock removal at right-of-way entrances from Benton Road through Nicolas Road; wreck-out of existing poles and wire at Construction Areas UNK95 through UNK115; foundation patching at Construction Areas UNK20, UNK41, and UNK69 through UNK115; guy stub pole stringing at Construction Area UNK89; and line energization at poles 4606520E through 4606518E.
4. Wilson Construction activities on Segment 2 included watering restoration sites at poles 4402023E, 4402024E, 4402027E, 4402028E, 4402043E, 4402061E, and 4402062E.
5. SCE self-perform construction activities within the Valley Substation included wiring inside the Meer building, 115 kV rack, and at vaults in the substation and Construction Area UNK250 (see Photo 4).

Environmental Compliance

1. Biological, cultural, paleontological, and Native American monitoring occurred during construction activities.
2. There were no SCE self-reported incidents and one observation during the monitoring period. The observation was for non-project related construction activities on the right-of-way.
3. Traffic control was in place on Leon Road during construction activities on Segment 1.
4. As of the end of the monitoring period, there are fourteen active nests associated with project activities on Segment 1, including red-tailed hawk, Eurasian collard-dove, mourning dove, northern mockingbird, western meadowlark, western kingbird, loggerhead shrike, and common raven. Buffers have been established per the Project Nesting Bird Management Plan, which specifies the establishment of buffers and the removal of inactive non-special-status bird species' nests. There were six nest buffer reduction submissions during the monitoring period. These included western meadowlark, mourning dove, red-tailed hawk, and loggerhead shrike. No nests were removed during the subject reporting period.
5. There were no special-status species observed or identified at locations associated with construction activities during the subject monitoring period.
6. One new potential Stephen's kangaroo rat burrow was documented during the monitoring period on Segment 1. An Environmentally Sensitive Area buffer of 10 feet was established at the potential burrow.
7. There were no SCE self-reported SWPPP maintenance items associated with construction activities reported throughout the monitoring period.
8. There were no reportable (> 1 gallon) or non-reportable (<1 gallon) spills associated with construction activities during the monitoring period.

Temporary Extra Workspaces (TEWS) and Minor Project Changes (MPCs)

No MPC or TEWS requests were approved during the subject monitoring period. Table 2 summarizes the TEWS and MPCs for the Valley South Subtransmission Project to date.

Table 2 – TEWS & MPCs
(Updated 05/14/20)

MPC/TEWS No.	Description	Status
MPCs		
1	Leon Road Realignment	Issued by CPUC 01/11/19
2	Laydown area for wood pole storage south of Valley Substation Yard.	Issued by CPUC 07/10/19
3	Additional work areas and access roads on Segment 1 and Segment 2	Issued by CPUC 08/30/19
4	Additional work area adjacent to pole 4402074E on Segment 2.	Issued by CPUC 10/29/19
5	Additional work areas and access roads on Segment 1	Issued by CPUC 12/12/19
6	Additional overland travel access on Segment 1	Issued by CPUC 01/16/20
7	Change overhead distribution work to underground and associated workspace on Segment 1 between Construction Areas UNK44 and UNK45	Issued by CPUC 03/13/20
8	Additional work area to be used for the installation of an anchor on existing pole #4393118E	Issued by CPUC 03/26/20
TEWS		
1	Use of existing access road at Construction Area UNK241 through UNK243	Issued by Aspen 09/12/19

CPUC Compliance Incidents, Project Memoranda (PMs) and Non-Compliance Reports (NCRs)

No Incident Reports, PMs, or NCRs were issued by the CPUC EM during the subject reporting period. Table 3 summarizes the CPUC Incidents, PMs, and NCRs issued to date.

Table 3 - CPUC Incidents, Project Memoranda, and Non-Compliance Reports
(Updated 05/14/20)

Incident/ PM/NCR	Regulatory Requirement	Date Issued	Segment	Description
Level 1 Incident	NTP requirement	08-20-19	Segment 1	Wood poles staged at Construction Areas not released for construction.
Level 1 Incident	SWPPP/BIO-2/ AES-1	09-25-19	Segment 1	Construction equipment without secondary containment, staging area without screening, pipes without capping, and an open trench with gaps in covering.
Level 1 incident	NTP/MMCRP	02-19-20	Segment 1	Distribution riser trenching outside of approved project disturbance limits between Construction Areas UNK44 and UNK45.
Level 1 incident	NTP/MMCRP	03-05-20	All	Weekly and daily reporting not adhering to the criterion stated in the MMCRP.
Level 1 incident	NBMP	04-22-20	Segment 1	Nest buffer reduction for a red-tailed hawk nest not managed in accordance with the Nesting Bird Management Plan (NBMP)

PROJECT PHOTOGRAPHS



Photo 1 – Setting TSP at Construction Area UNK47 (May 6, 2020).



Photo 2 – Wire stringing activities at Construction Area UNK54. Please note that ground disturbing construction activities in the foreground of photo is non-project related. (May 6, 2020).



Photo 3 – Distribution cutover activities at Construction Area UNK25 (April 28, 2020).

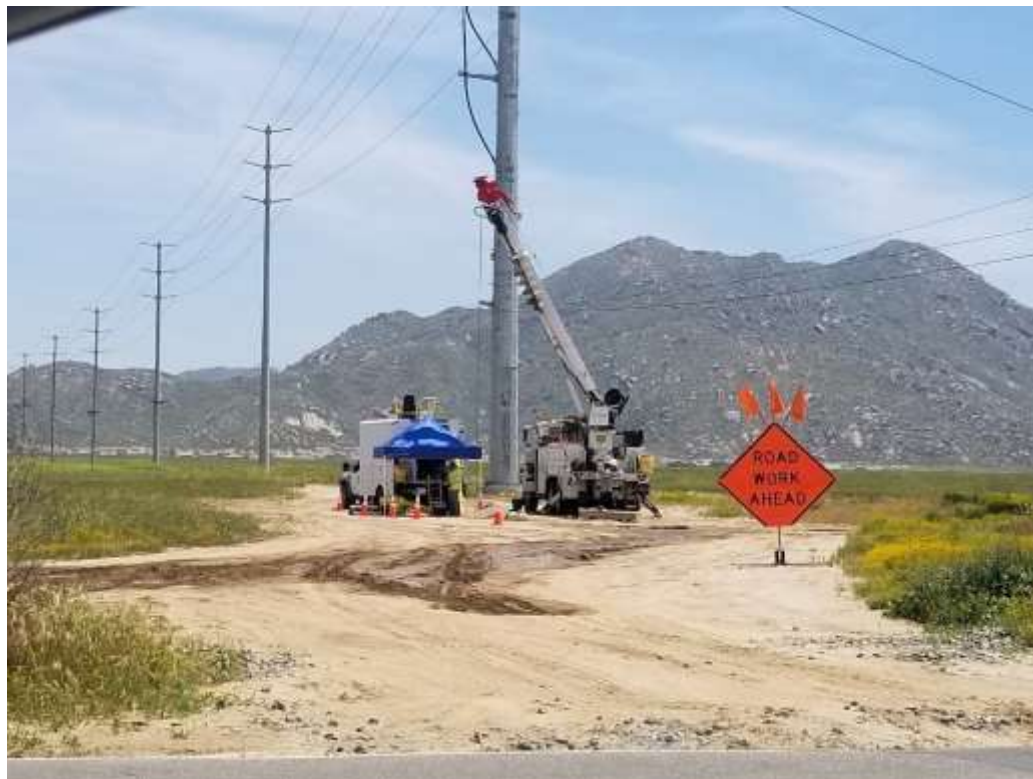


Photo 4 – SCE crews working in vault at Construction Area UNK250 (April 29, 2020)
(Photo courtesy of SCE).