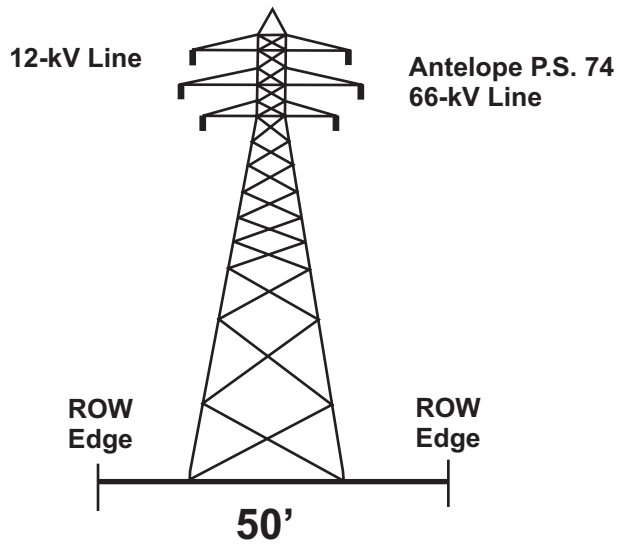
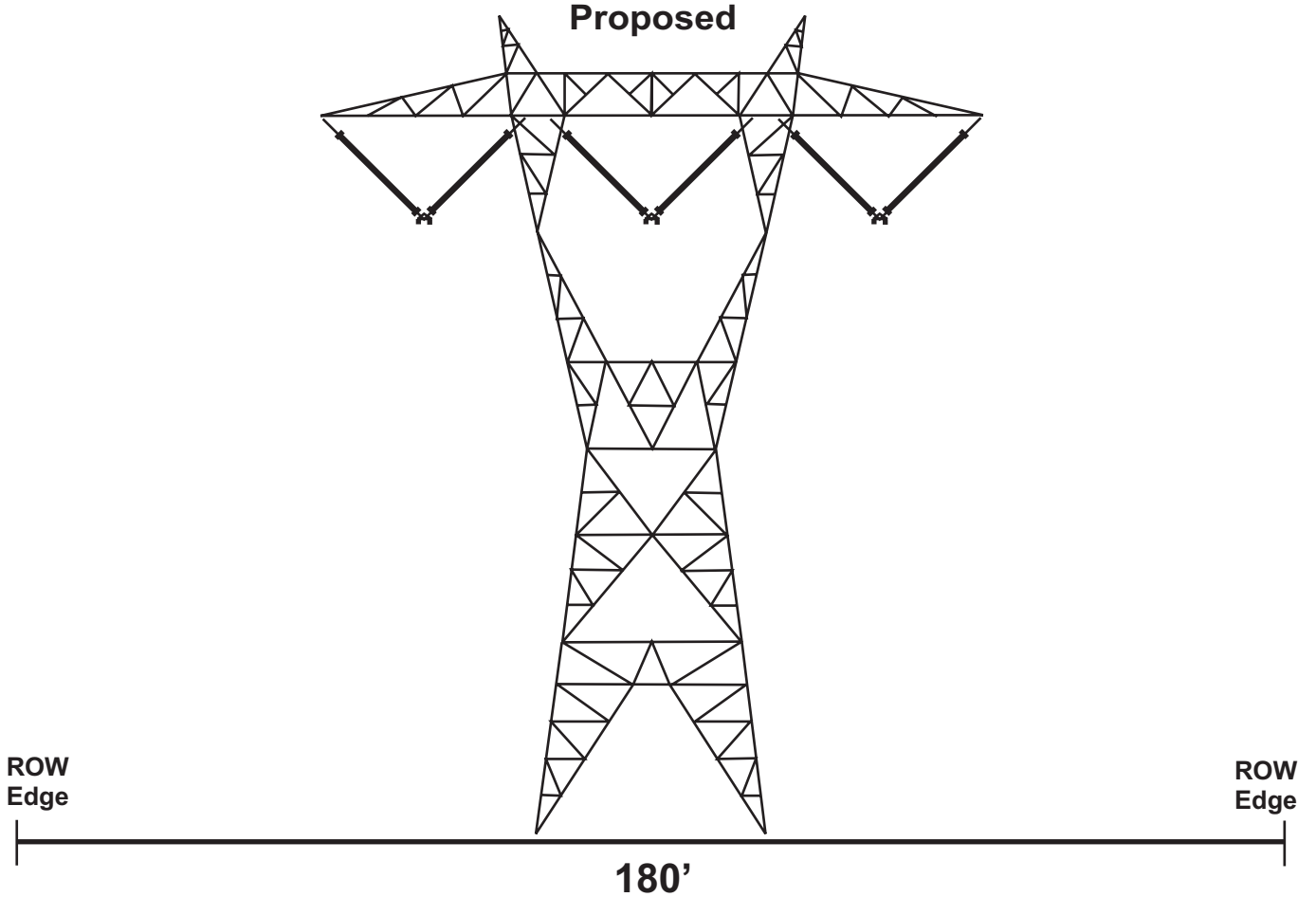


Existing



Proposed



Note: Tower heights vary (66-kV is 60 to 90 feet, 500-kV is 113 to 178 feet).
 Approximate typical heights are shown.

Source: SCE, 2004.



Figure B.2-8 (updated)
Existing and Proposed ROW Configurations
For Proposed Project Mile 1.1 to Mile 5.7