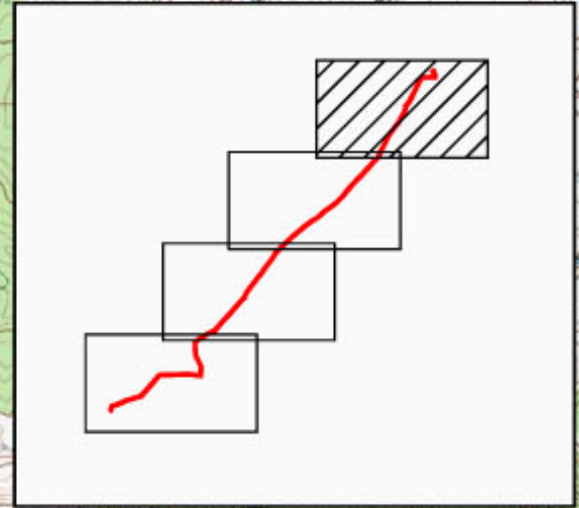
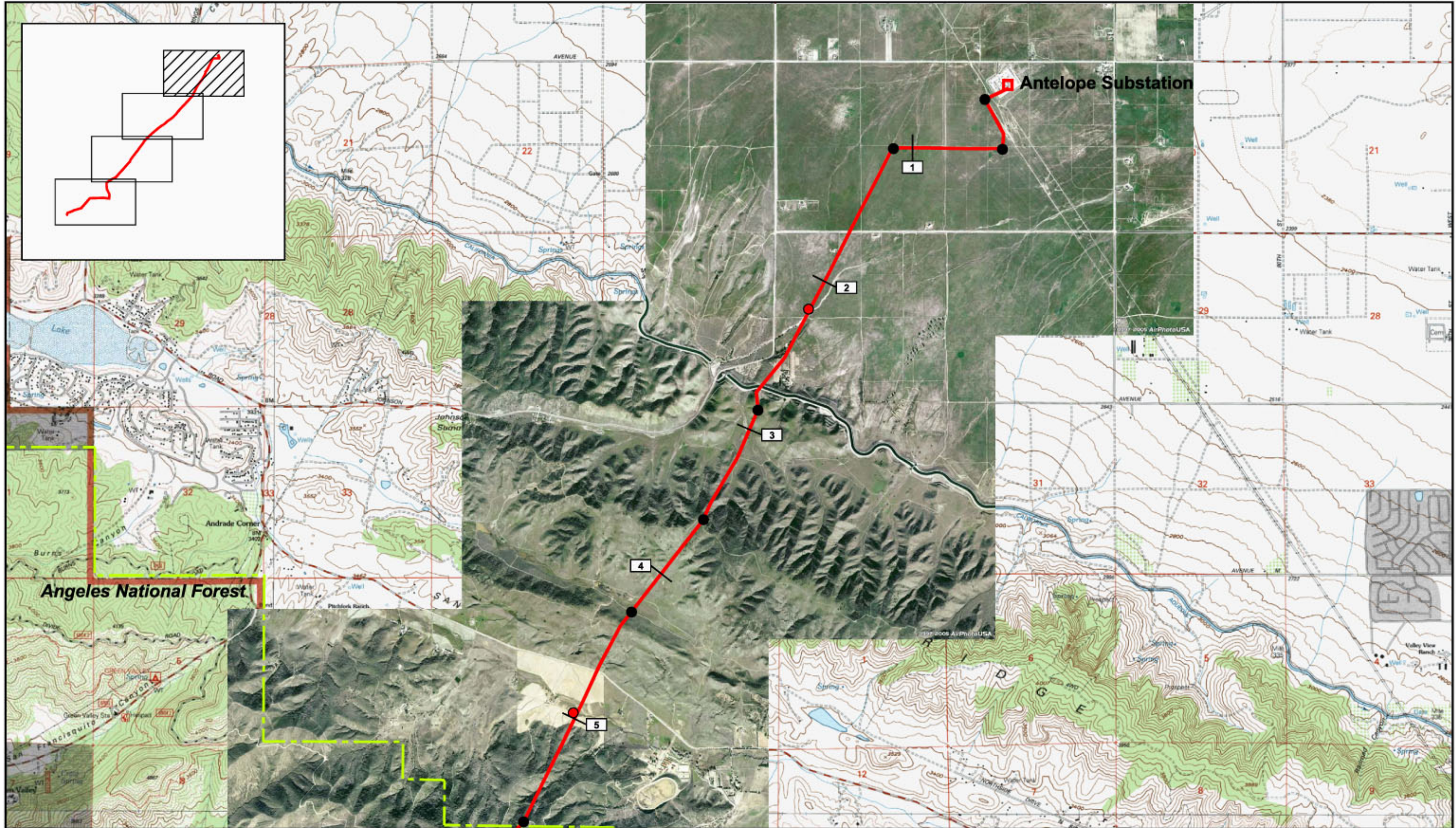


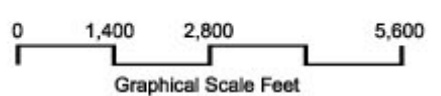
## **Appendix 6. Proposed Project and Alternative Route Maps**





Prepared by  
**Aspen**  
 Environmental Group

Scale: 1" = 2,800'  
 Date: December 8, 2006  
 File: 1236 APmapApp4.dwg



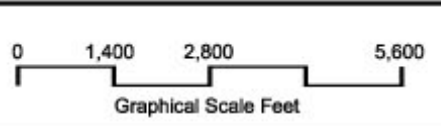
- Proposed Route
- Substation Location
- / ● Splicing Location Outside ANF\Within ANF
- / ● Pulling Location Outside ANF\Within ANF

**Proposed Project**  
 Map 1 of 4





Scale: 1" = 2,800'  
 Date: December 8, 2006  
 File: 1236 APmapApp4.dwg

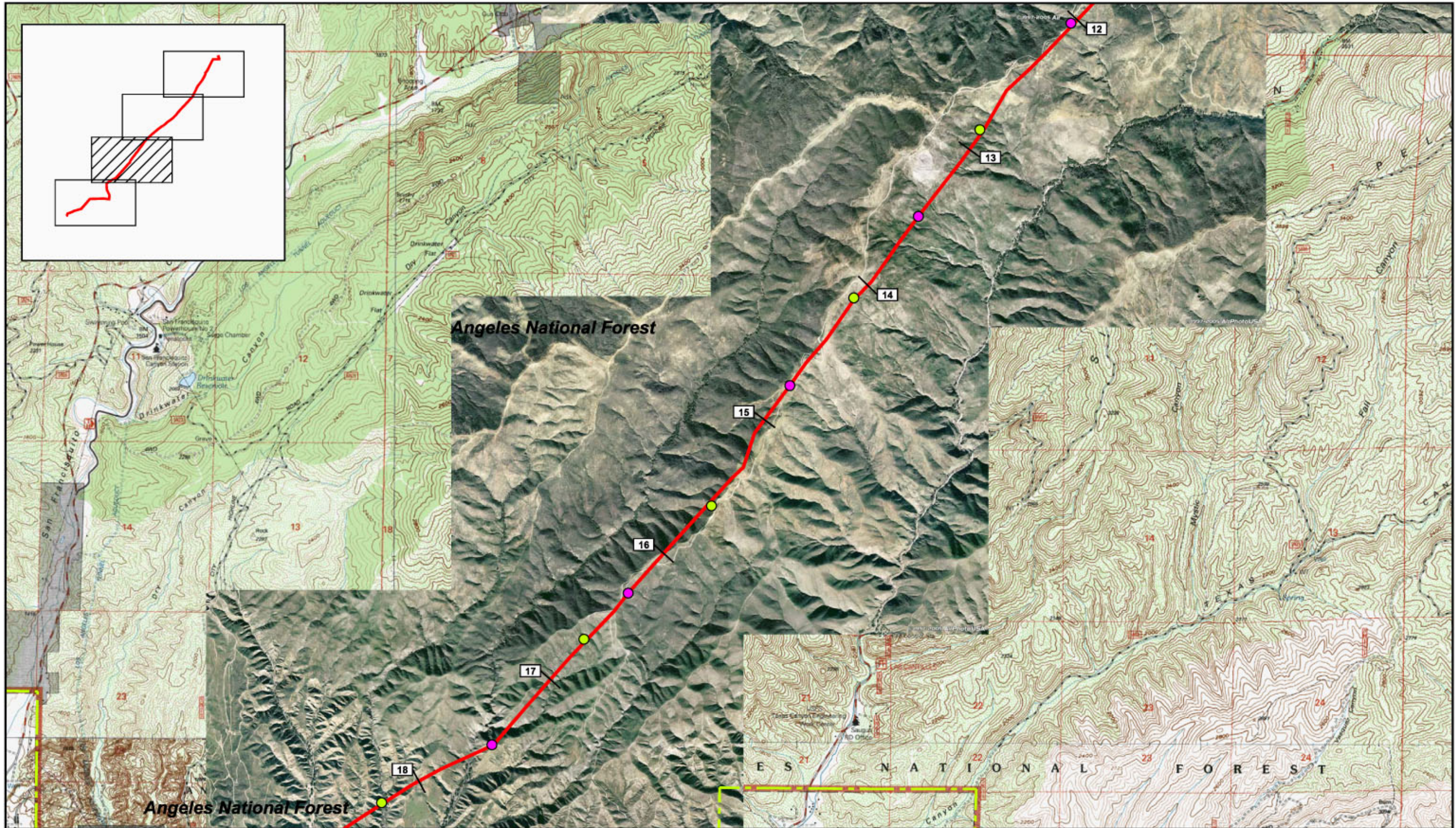


— Proposed Route

- \ ● Splicing Location Outside ANF\Within ANF
- \ ● Pulling Location Outside ANF\Within ANF

**Proposed Project**  
**Map 2 of 4**





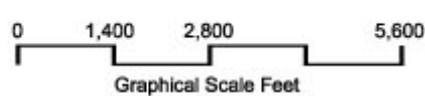
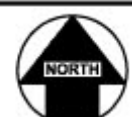
Angeles National Forest

Angeles National Forest

E S T A B L I S H E D 1 9 0 8 N A T I O N A L F O R E S T



Scale: 1" = 2,800'  
 Date: December 8, 2006  
 File: 1236 APmapApp4.dwg

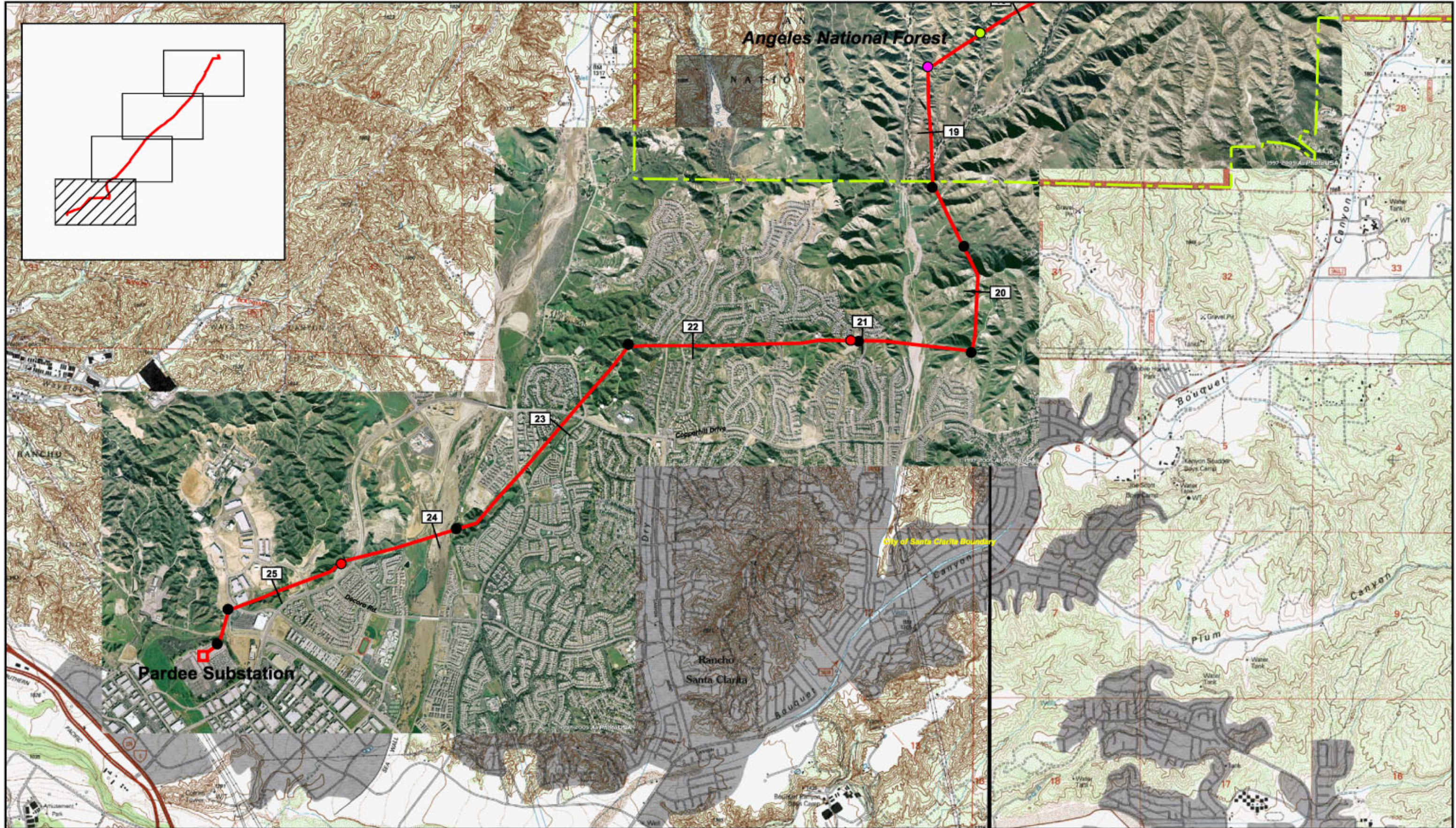


Proposed Route

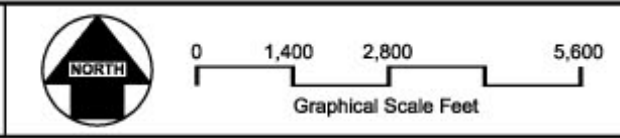
- \ ● Splicing Location Outside ANF\Within ANF
- \ ● Pulling Location Outside ANF\Within ANF

Proposed Project  
 Map 3 of 4





Scale: 1" = 2,800'  
 Date: December 8, 2006  
 File: 1236 APmapApp4.dwg

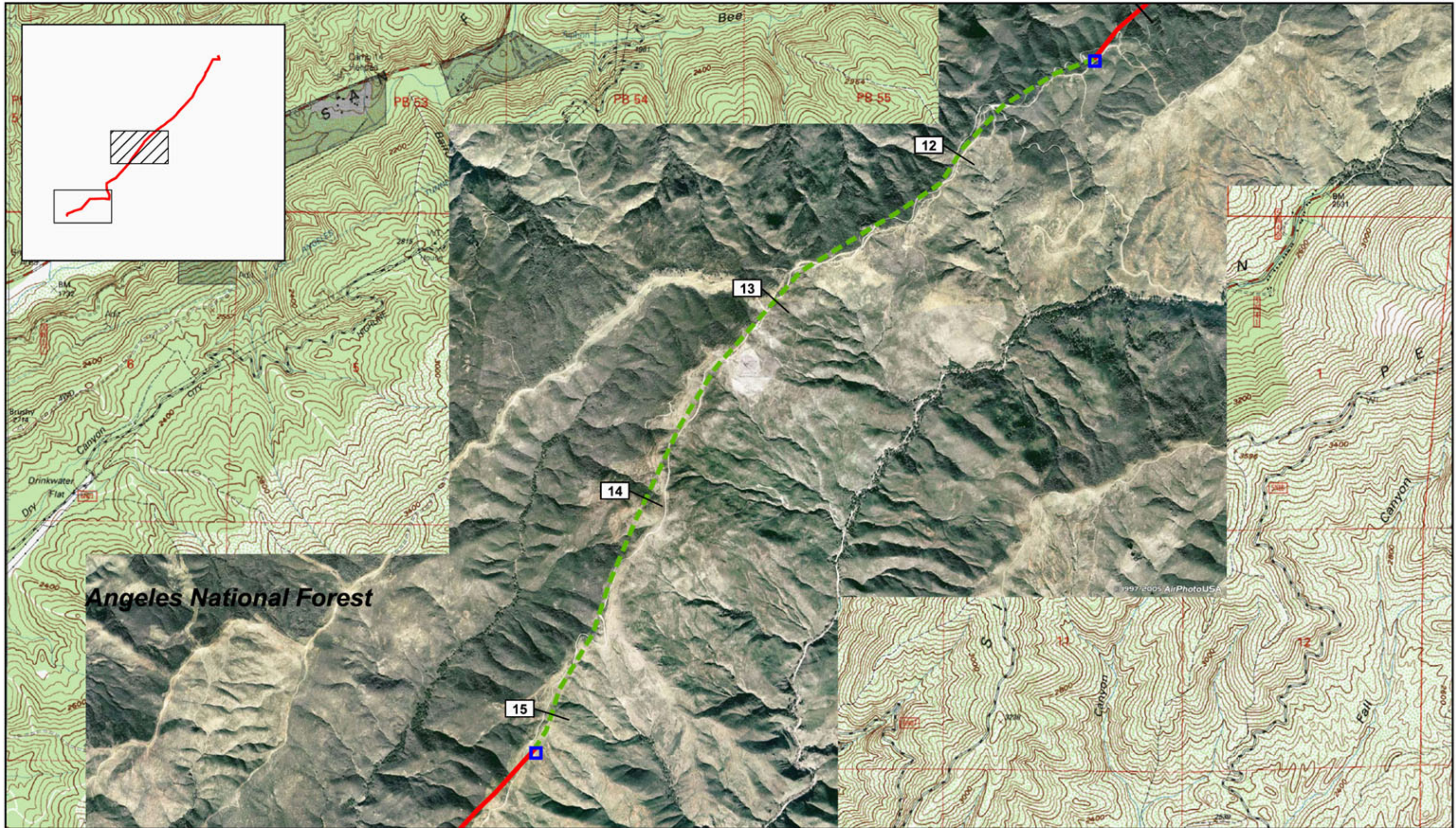


— Proposed Route  
 □ Substation Location

● \ ● Splicing Location Outside ANF\Within ANF  
 ● \ ● Pulling Location Outside ANF\Within ANF

**Proposed Project**  
**Map 4 of 4**

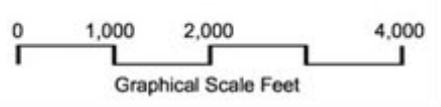




**Angeles National Forest**



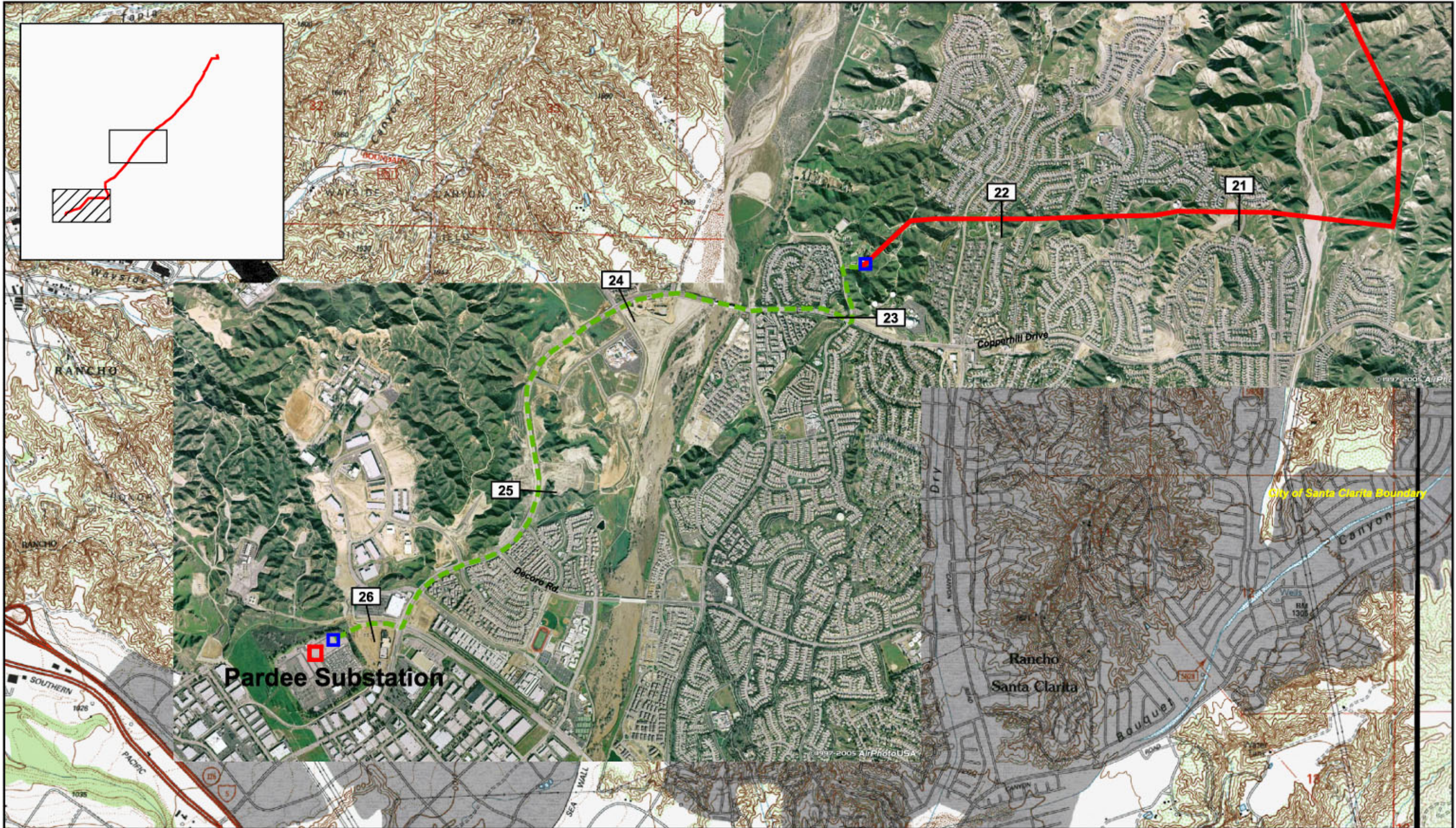
Scale: 1" = 2,000'  
 Date: December 8, 2006  
 File: 1236 APmapApp4.dwg



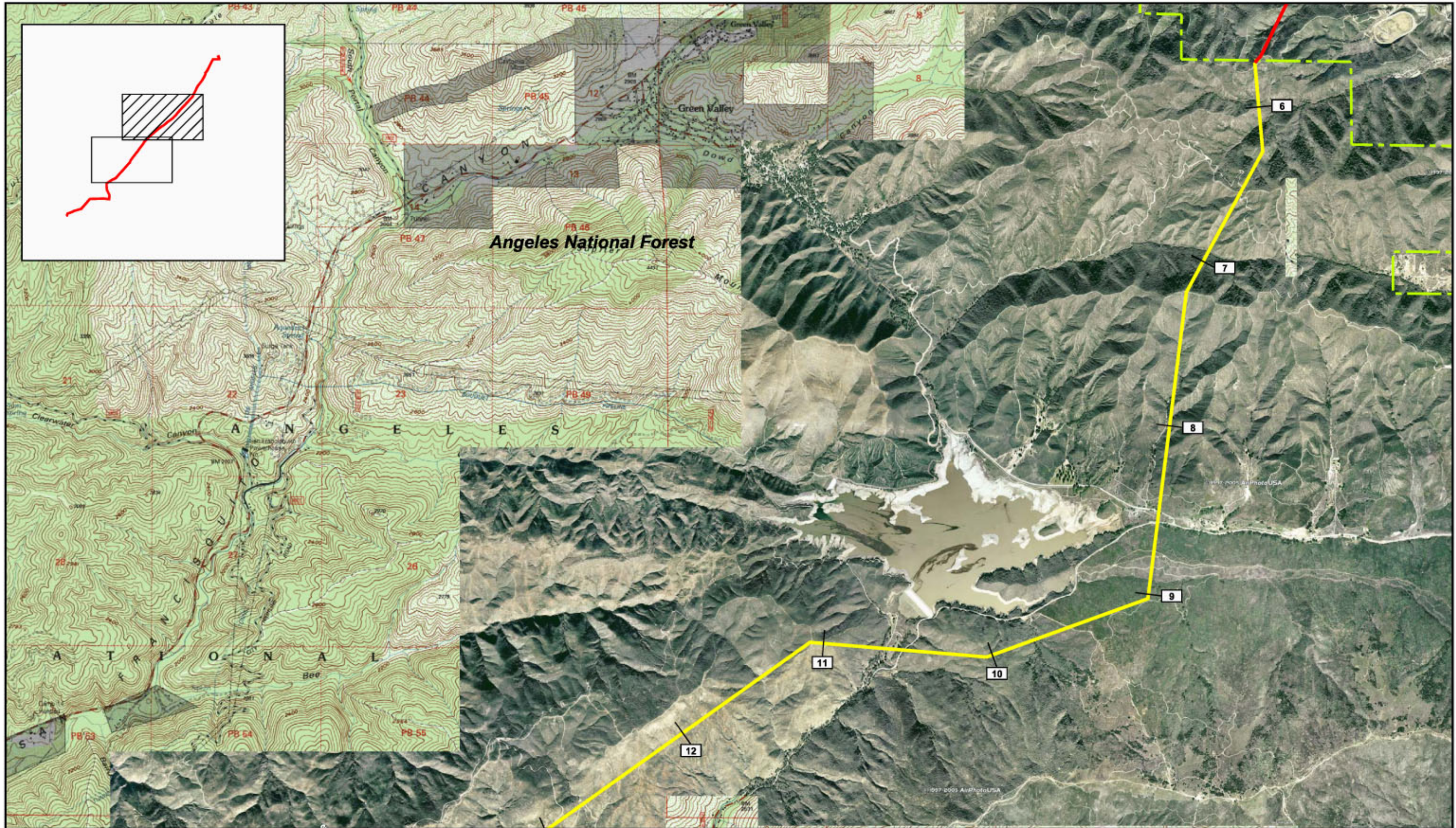
——— Proposed Project     Transition Station  
- - - - Alternative 1

**Alternative 1**  
**Map 1 of 2**



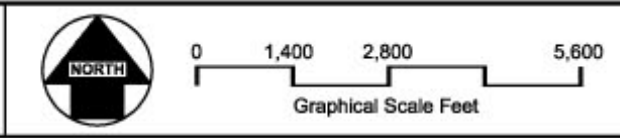






Prepared by  
**Aspen**  
 Environmental Group

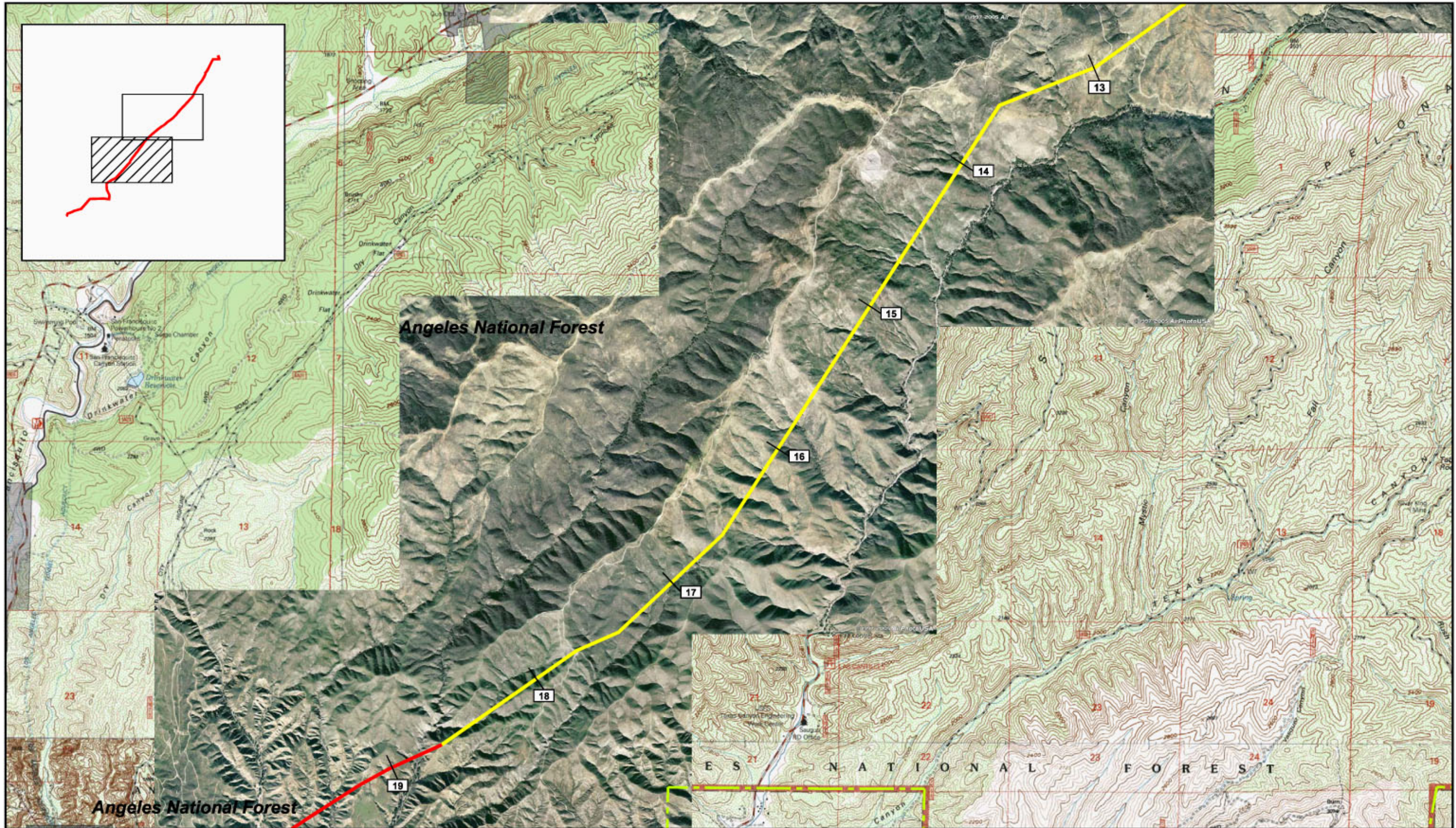
Scale: 1" = 2,800'  
 Date: December 8, 2006  
 File: 1236 APmapApp4.dwg



— Proposed Project  
 — Alternative 2

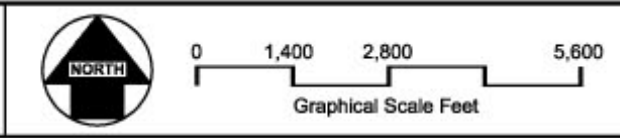
**Alternative 2**  
**Map 1 of 2**





Prepared by  
**Aspen**  
 Environmental Group

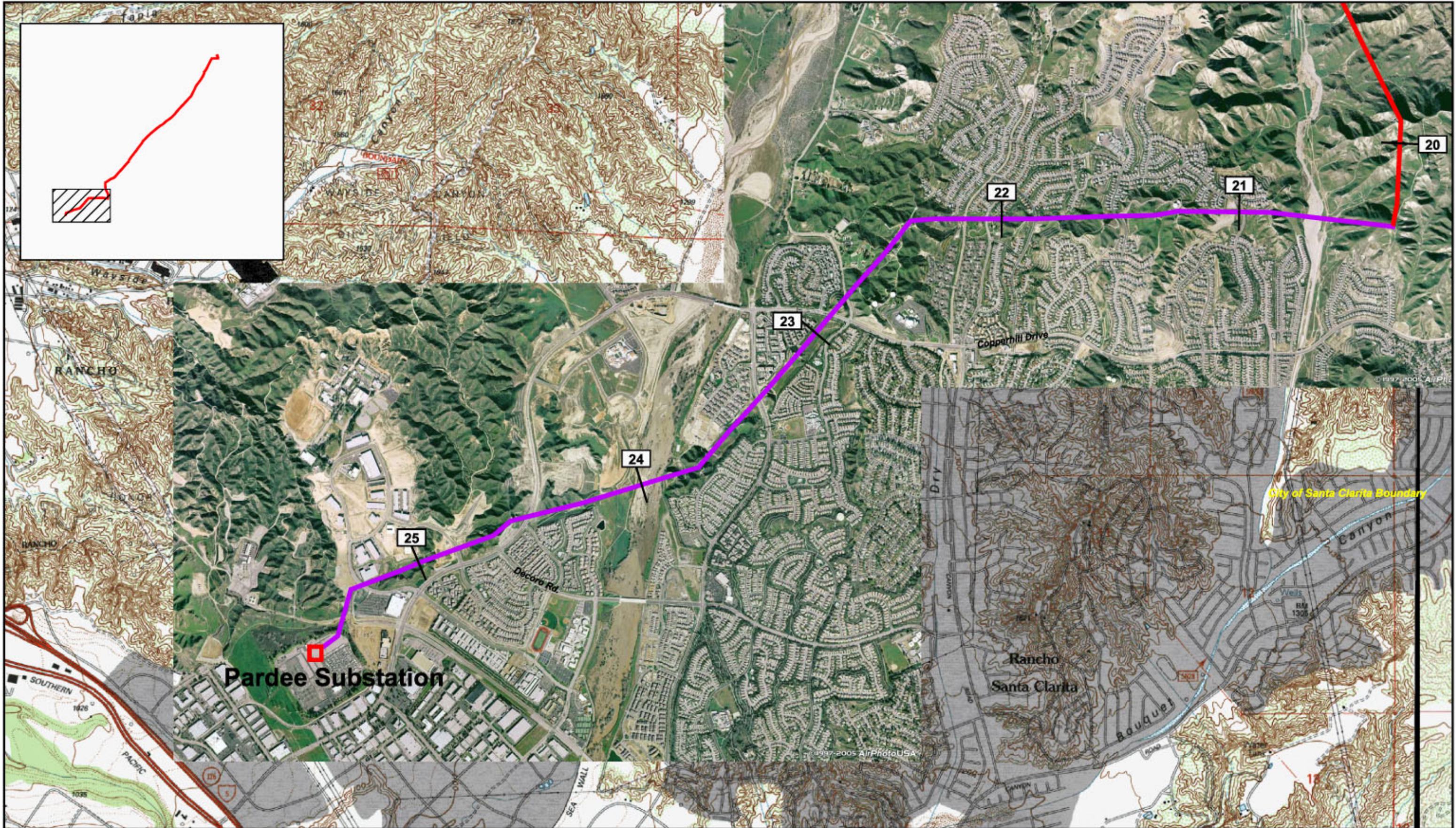
Scale: 1" = 2,800'  
 Date: December 8, 2006  
 File: 1236 APmapApp4.dwg



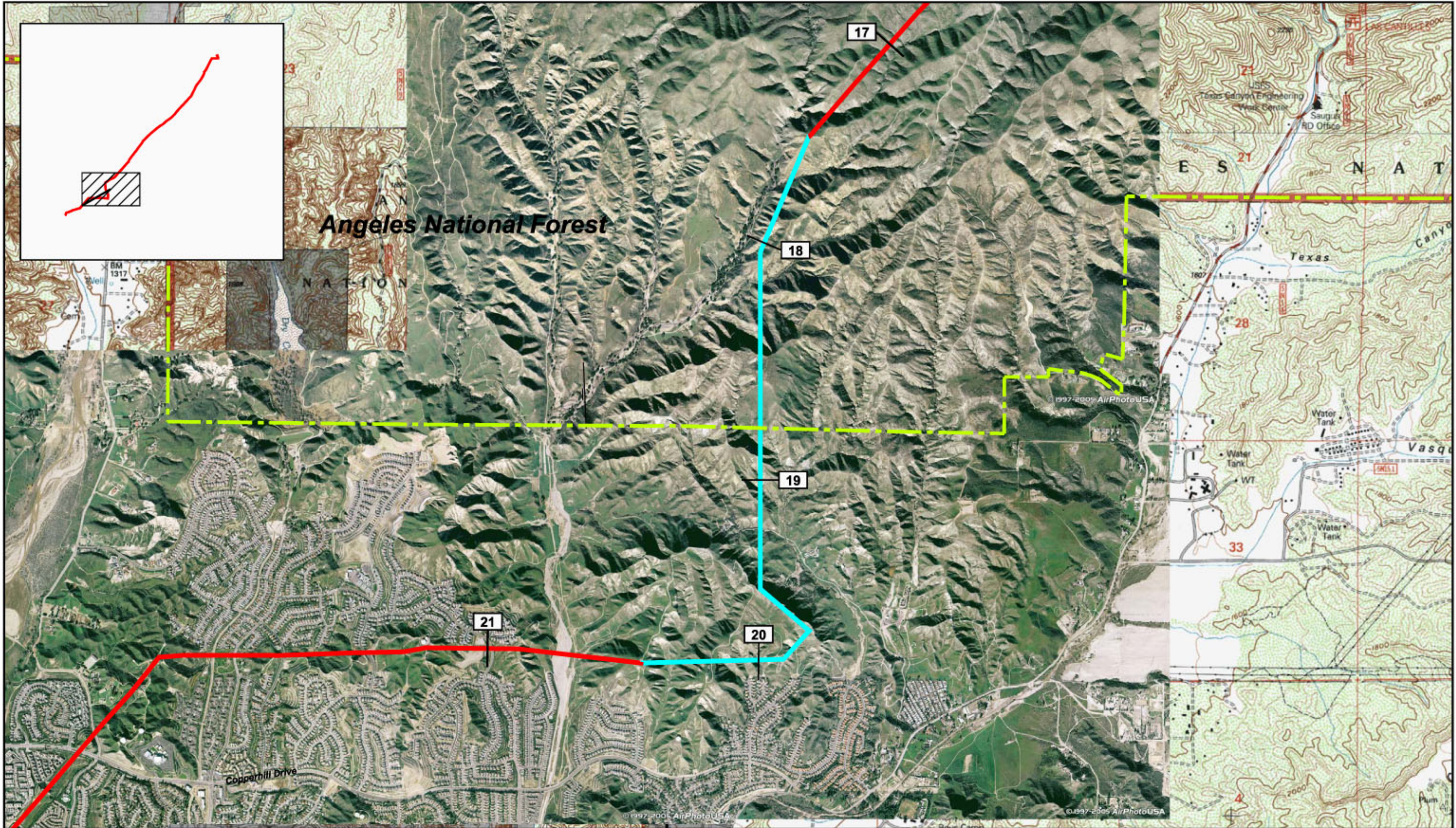
— Proposed Project  
 — Alternative 2

**Alternative 2**  
**Map 2 of 2**

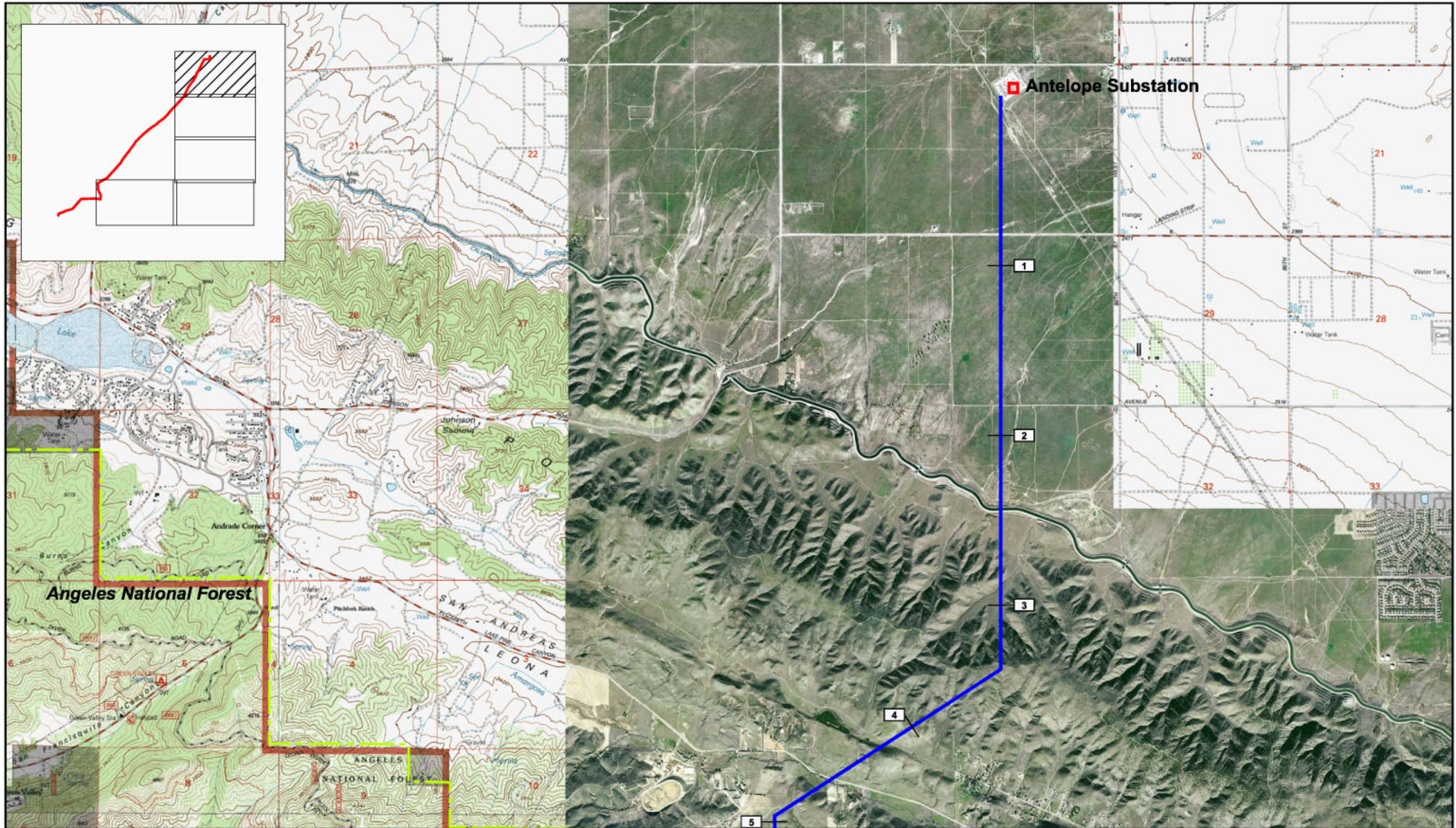






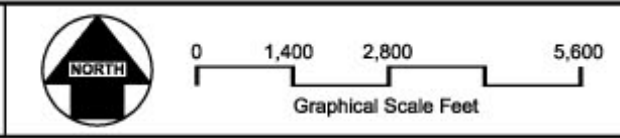






Prepared by  
**Aspen**  
 Environmental Group

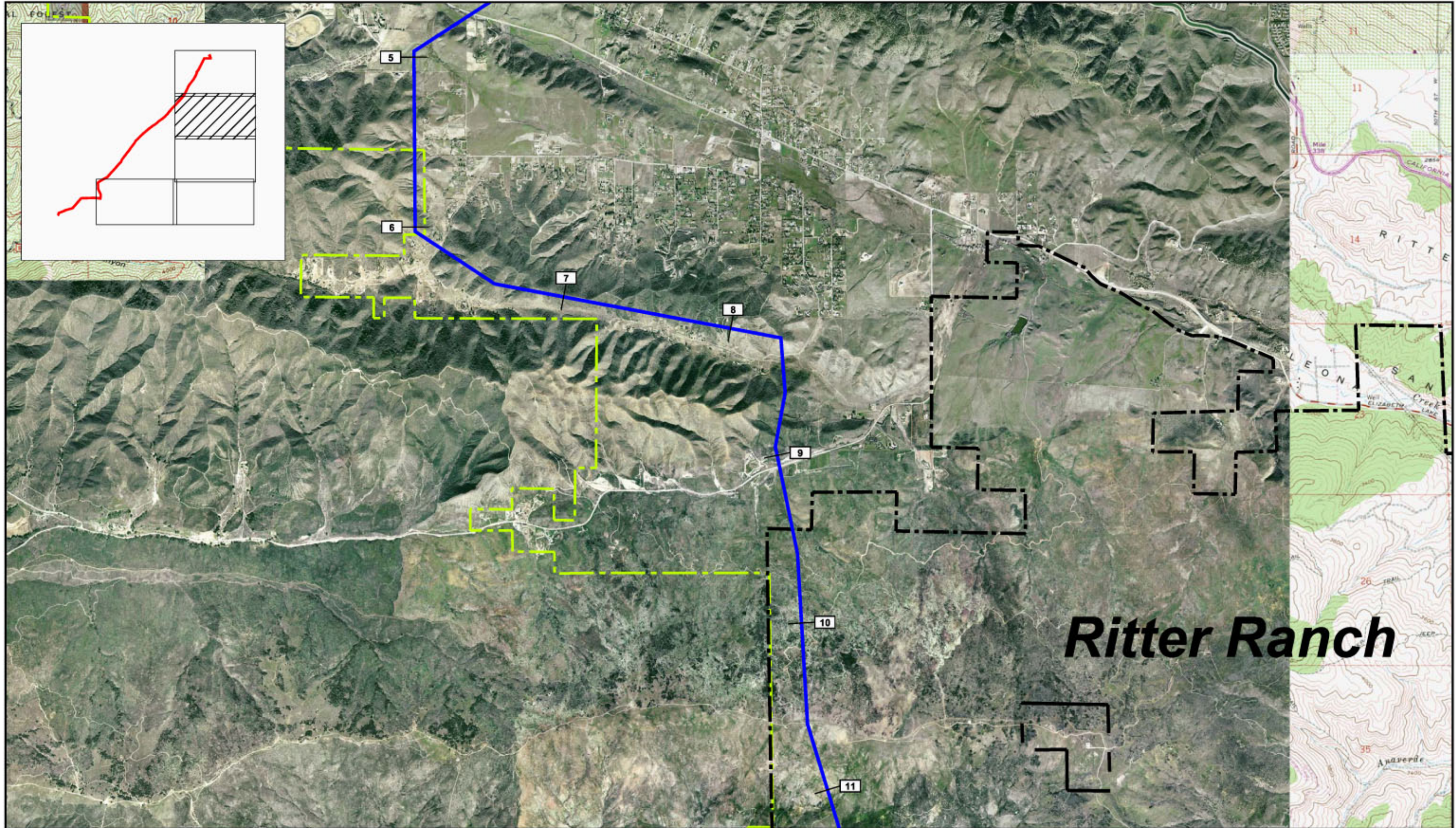
Scale: 1" = 2,800'  
 Date: December 8, 2006  
 File: 1236 APmapApp4.dwg



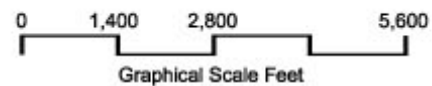
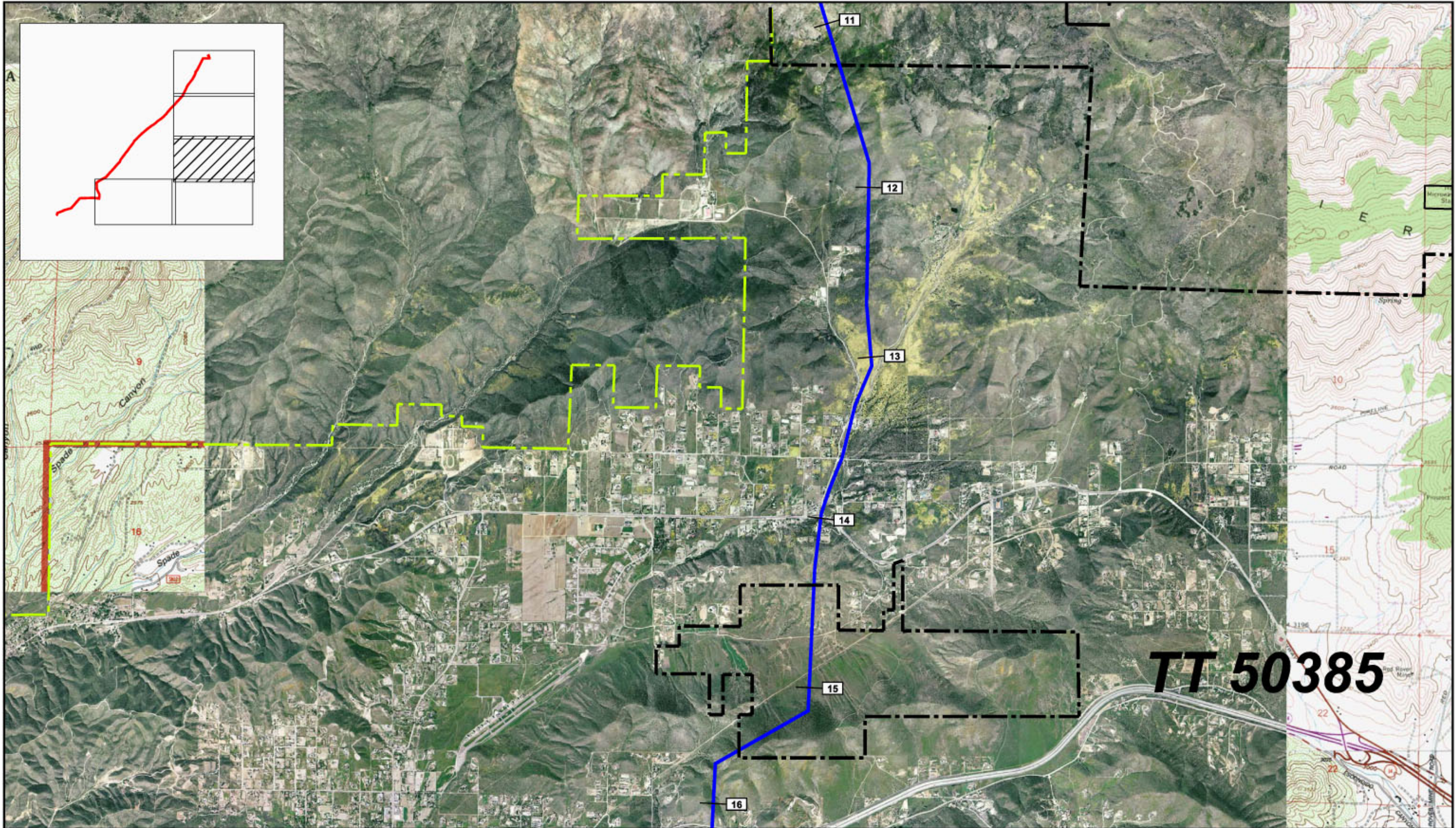
— Alternative 5  
 □ Substation Location

**Alternative 5**  
**Map 1 of 5**



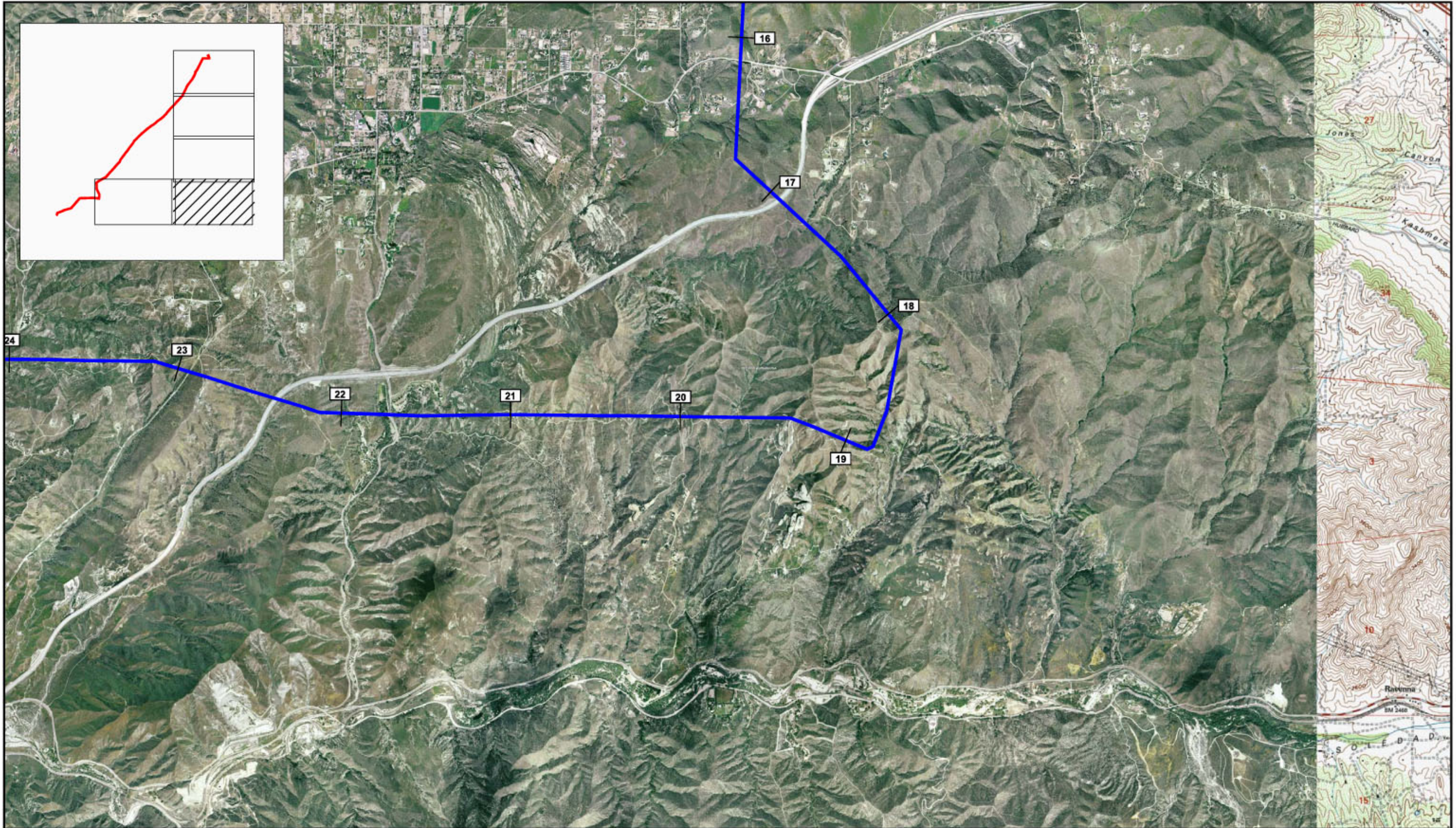






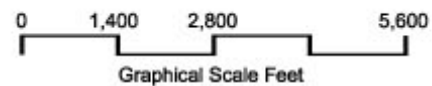
— Alternative 5





Prepared by  
**Aspen**  
Environmental Group

Scale: 1" = 2,800'  
Date: December 8, 2006  
File: 1236 APmapApp4.dwg



 Alternative 5

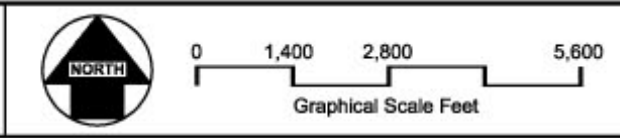
**Alternative 5**  
**Map 4 of 5**





Prepared by  
**Aspen**  
 Environmental Group

Scale: 1" = 2,800'  
 Date: December 8, 2006  
 File: 1236 APmapApp4.dwg



— Proposed Project  
 — Alternative 5

**Alternative 5**  
**Map 5 of 5**