



5020 Chesebro Road, Suite 200, Agoura Hills, CA 91301
Tel. 818-597-3407, Fax 818-597-8001, www.aspeneg.com

**PROJECT MEMORANDUM
SCE TRANSMISSION PROJECTS, SEGMENTS 1–11**

To: John Boccio, Project Manager, CPUC
From: Vida Strong, Aspen Project Manager
Date: March 19, 2015
Subject: Weekly Report 371: March 1 to 7, 2015

INTRODUCTION

This report provides a summary of the construction and compliance activities associated with the following SCE transmission projects:

1. Antelope-Pardee 500 kV Transmission Project, Segment 1, including Antelope Substation expansion;
2. Antelope Transmission Project, Segments 2, 3A and 3B, including the Windhub and Highwind Substations; and
3. Tehachapi Renewable Transmission Project, Segments 4 through 11, including Whirlwind Substation and the expansion of Vincent Substation.

A summary of the Notices to Proceed with construction and Variance Request activity are also provided (see Tables 1 and 2, respectively, near the end of this report). Finally, a summary of Temporary Extra Workspace and non-compliance activity are provided in Tables 3 and 4, respectively.

CPUC/Aspen Environmental Monitors (EM): Jenny Slaughter (Lead Monitor), Cassandra Olson, Jamie Miner, and Scott Debauche (helicopter tracking)

SEGMENTS 1-3: ANTELOPE-PARDEE AND ANTELOPE TRANSMISSION PROJECTS

Summary of Activity:

1. Construction of Segments 1, 2, 3A, and 3B has been completed including the Antelope, Highwind, and Windhub Substations, and installation of additional cathodic protection along the adjacent gas pipelines along Segment 3B. A request for Final Engineering Concurrence (FEC) was submitted for a wall surrounding the Highwind Substation on February 4; this request is being revised to incorporate additional drainage features. An FEC request to address additional cathodic protection for an adjacent PG&E pipeline is expected in March 2015.
2. The Segment 3B transmission line and Highwind Substation were energized on December 6, 2012. Temporarily disturbed construction areas have been hydroseeded and may require additional seed application during the 2014/2015 rainy season. Vegetative growth has yet to reach the 70% cover requirement for disturbed areas.
3. Revegetation for Segments 2 and 3A was started in April 2011. Ongoing maintenance activities will be documented in reports to the CPUC. The Year 3 Biannual Monitoring Memorandum was submitted on March 25, 2014 and comments were provided on May 19th.
4. Restoration on Segment 1 has been ongoing. The Adaptive Management Plan for Segment 1 restoration was submitted on November 22, 2013, and a site visit with agency and SCE personnel was conducted on January 16th. SCE is currently implementing Adaptive Management Plan strategies. The Year 3 Annual Restoration Monitoring Report was submitted on March 20, 2014 and comments were provided to SCE on June 3rd. Comments on the Year 4 4th Quarter Qualitative Restoration Site Monitoring Report were provided on January 15, 2015. A Variance Request was approved by CPUC on August 29 to eliminate some sites from restoration requirements for non-ANF sites; ANF review still pending.



Environmental Compliance:

1. The Segment 3B Addendum is being incorporated into the Segment 4/5/10 Habitat Management and Monitoring Plan (see below).

No Project Memoranda or Non-Compliance Reports were issued for Segment 1-3 construction activities during the subject period. Non-Compliance activities for the project to date are summarized in Table 4.

Agency Representatives during Construction (other than CPUC EMs):

None

TEHACHAPI RENEWABLE TRANSMISSION PROJECT (TRTP) SEGMENTS 4-11

The SCE Tehachapi Renewable Transmission Project was evaluated in accordance with CEQA and NEPA requiring the preparation of a Final Environmental Impact Report/Statement (EIR/S) by the CPUC and U.S. Forest Service (USFS). A Certification of Public Convenience and Necessity (CPCN) was granted by the CPUC on December 17, 2009 and the USFS Record of Decision (ROD) was issued on October 4, 2010.

The CPUC and USFS also prepared an SEIR/SEIS for the proposed changes requested in SCE's Petition for Modification of Decision 09-12-044 on the TRTP. The SEIR/SEIS addresses implementation of the FAA's recommendations including: installation of marker balls on 276 transmission line spans; installation of aviation lights on 90 transmission structures; and engineering refinements to reduce the height of 21 structures within Segment 8 between Chino and Mira Loma Substations utilizing a combination of shorter tubular steel poles and specially designed dead-end lattice steel towers, which would result in changing the previously approved structure type for seven structures. The CPUC issued a Final Decision for the FAA related changes on October 31, 2013, for non-ANF lands. A final ROD for the FAA changes on ANF lands was by the USFS on October 17, 2014.

SEGMENTS 4, 5, AND 10 – ANTELOPE VALLEY

Summary of Activity

1. Segment 4: Construction of Segment 4 is complete. This segment was energized on February 7, 2012. Areas disturbed by construction have been hydromulched and seeded. SCE filed a Notice of Termination (NOT) with the Regional Water Quality Control Board to close the Segment 4 SWPPP and the NOT has been approved.
2. Segment 5: Construction of Segment 5 is complete. This segment was energized in December 2012. Areas disturbed by construction have been hydromulched and seeded. SCE filed a NOT with the Regional Water Quality Control Board to close the Segment 5 SWPPP and the NOT has been approved.
3. Segment 10: Construction of Segment 10 is complete. This segment was energized on June 22, 2012. Areas disturbed by construction have been hydromulched and seeded. SCE filed a NOT with the Regional Water Quality Control Board to close the Segment 10 SWPPP and the NOT has been approved.
4. Construction of the control building exterior at the Vincent Substation has been completed. Interior components and additional paving activities are ongoing and are scheduled for completion by Q2 2015.
5. Segment 10 Telecom: Work has been completed.
6. Whirlwind Substation: Construction of the Whirlwind Substation has been completed.

Environmental Compliance:

1. A revised HMMP for Segments 4, 5 and 10 for temporary habitat impacts is scheduled to be submitted in February 2015. Permanent impacts for Segments 4, 5, 10, and Whirlwind Substation will be accounted for in SCE mitigation land acquisition.

No CPUC Project Memoranda or Non-Compliance Reports were issued for Segments 4, 5, and 10 during this reporting period. Non-Compliance activities for the project to date are summarized in Table 4.

Agency Representatives during Construction (other than CPUC EMs):

None

SEGMENTS 6 AND 11 – ANGELES NATIONAL FOREST & LOS ANGELES COUNTY

The Final EIS was released by the USFS on September 14, 2010. The USFS Record of Decision (ROD) was issued on October 4, 2010, and Special Use Permit for Segments 6 and 11 was issued on September 21, 2011. As noted above, the CPUC and USFS prepared an SEIR/SEIS for the proposed changes to the TRTP requested in SCE's Petition for Modification of Decision 09-12-044 on the TRTP regarding implementation of FAA required improvements, including lighting and marker balls. The CPUC issued a Final Decision for the FAA lighting on October 31, 2013, for non-ANF lands. The final ROD for FAA changes on ANF lands was issued by the USFS on October 17, 2014.

Summary of Activity

Segment 6A (Constructs 1-35), Segment 6B (Constructs 36-71) and Segment 6C (Constructs 72 –113)

1. Construction of the Segment 6 transmission line has been completed. Remaining work including restoration activities at temporary disturbed areas, erosion control maintenance, weed abatement, and road finalization are ongoing.
2. Drainage improvements and wet crossing installation/maintenance occurred at Jurisdictional Drainage ID (JDID) 11-2-S-8.
3. Restoration hydroseeding activities occurred at Constructs (towers) 58, 60 and 63; Pull Site 62/63; and Loop Roads G and H.
4. BMP maintenance occurred throughout Segment 6.

Segment 6 percent completions to report date include: conductor removal 100%, structures removal 100%, foundation removal 100%, foundations installed 100%, tower erection 100%, and wire stringing 100%.

Segment 11A (Goodrich to Mesa Substation)

5. Construction activity on Segment 11A has been completed.

Segment 11B (Gould to Goodrich Substation)

6. Construction activity on Segment 11B has been completed.
7. Restoration activities continued at Chaney Trails (see Figure 1).

Segment 11C (Vincent to Gould Substation)

8. Vegetation clearing occurred at Constructs 9 and 44, Pull Site 53/54, and multiple Civil IDs.
9. Road grading activities occurred at Constructs 11AX, 22, 23, 44, and 53; Civil ID 420; and Loop Roads N and O.
10. Drainage improvements and wet crossing installation/maintenance occurred at Jurisdictional Drainages throughout Segment 11C.
11. Wire activity occurred at Gould and Vincent Substations (see Figure 2).
12. BMP installation and maintenance occurred throughout Segment 11C.

Segment 11D (Gould Substation)

13. No construction activity occurred at the Gould Substation.

Segment 11 percent completions to report date include: conductor removal 100%, structures removal 100%, foundation removal 100%, foundations installed 100%, tower erection 100%, and wire stringing 100%.

Environmental Compliance:

1. On May 13 and 14, 2014 an in-field inspection for review water quality releases and SWPPP compliance was held with the State and Regional Water Resource Control Board representatives across Segments 6 and 11. A report of the Board's findings was released to SCE on June 13, 2014. A subsequent field review was conducted by State and Regional Water September 23 to 25, 2014, and the Inspection Report documenting their findings was submitted to SCE on November 21, 2014. A follow up field inspection was also conducted by the USFS Soil Scientist, Botanist, and assigned Permit Administrator throughout the ANF right-of-way to determine if SWPPP modifications performed since Spring 2014 were functioning. A final inspection report from the USFS was submitted to SCE on December 11, 2014 and SCE submitted a response on February 11, 2015.
2. Monthly progress reports are being provided to the State and Regional Water Resource Control Boards detailing BMP installation, maintenance and site finalization progress throughout Segment 6 and 11. As reported in the January 2015 Monthly Report, SCE has completed 116 Corrective Actions and 316 BMP maintenance activities since midyear 2014.
3. Per CPUC direction, GPS tracking of helicopters used for TRTP is being implemented, with data to be reviewed by the CPUC for compliance monitoring. Each helicopter is now equipped with a GPS unit capable of showing the pilot restricted fly zones for sensitive resource areas (such as nesting bird buffers and seasonal restricted area) and the GPS units are uploaded with the latest resource information coordinates on a daily basis. CPUC EMs meet with SCE to review helicopter flight tracks for Segments 6 and 11 on a bi-weekly basis; however, regular helicopter operations ceased on March 5. Moving forward flight tracks will be reviewed as they occur. At this time, the contractor does not plan to fly until March 20, at which time a review will occur following the activity.
4. A Wetland Compliance Report has yet to be submitted for February 28 to March 6 on Segments 6 and 11.
5. SCE self-reported one compliance incident in Air Quality (MM AQ-1b), four compliance incidents in Biological Resources (APM BIO-2 and APM BIO-3) and one Health and Safety (H&S-4) incidents were pending at the end of the subject week.
6. On March 3, approximately 1 gallon of hydraulic fluid spilled at Construct 9 on Segment 11C when a hydraulic line on a bulldozer ruptured. All contaminated soil was removed, stored, and awaits proper disposal in the Vincent North Material Yard.
7. Trash and microtrash has been reported at Constructs 9 and 10, and Vincent Yard North/South on Segment 11C.
8. Archaeological and Native American Monitors were present during the reporting period to monitor construction activities in Segments 6 and 11. Weekly and monthly monitoring reports were submitted to the CPUC and the USFS. The purpose of the reporting is to inform the Lead Agencies and interested Native American communities about the nature of the work, weekly progress, and findings during the construction activities near culturally sensitive areas.
9. Mitigation Measure F-3d states, "*Remove hazards from the work area. SCE shall clear dead and decaying vegetation from the work area prior to starting construction and/or maintenance work.*" In accordance with this mitigation requirement, the USFS has agreed to allow SCE to remove dead/decaying trees or potential safety hazards along the project right-of-way. SCE is to provide the USFS with a weekly notification of any "Hazards" that have been identified and resolved. No hazards were identified during the reporting week.

10. SCE's Nesting Bird Management Plan was submitted to the USFS for review on December 10, 2013. The USFS issued a letter to SCE on April 10, 2014 accepting the proposed nesting bird buffers included in the Plan with the exception of eagles, federally threatened or endangered species, and Forest sensitive species. Buffers consistent with the Biological Opinion and the TRTP EIS would apply to these exceptions.
11. On March 26, 2013, SCE requested concurrence for the establishment of a 300-ft vertical helicopter buffer (instead of no over-flights) for the spotted owl seasonal restriction area during construction of Segments 6 and 11. The request for a 300-ft vertical helicopter buffer was not approved, instead the ANF responded on February 28, allowing a 0.25-mile (vertical/horizontal) helicopter buffer for PACs. SCE was instructed to avoid all known PACs in the same manner and to keep the GIS information on the pilots GPS units for avoiding those areas.
12. SCE submitted a weekly nesting bird reporting spreadsheet to the USFS, CDFW, and the CPUC reflecting five new nests observed: (bushtit [1], European starling [1], house sparrow [1], and common raven [2]), bringing the total of active bird nests on Segments 6 and 11 as of March 7, 2015, to twenty-seven.
13. No nesting bird buffer reduction requests were submitted for Segments 6 and 11 during the subject week. One nest removal notification was sent to CDFW regarding the removal of the European starling nest located in a temporary power pole that is scheduled for removal.
14. San Diego desert woodrat middens located in Segments 6A and 11C (off USFS lands) were monitored by Project biologists during the subject period.
15. Special-status species were observed during the subject period on Segments 6 and 11 included Cooper's hawk, golden eagle, loggerhead shrike, Southern California rufous-crowned sparrow, and Swainson's hawk.

No CPUC Project Memoranda or Non-Compliance Reports were issued for Segments 6 and 11 during this reporting period. Non-Compliance activities for the project to date are summarized in Table 4.

Agency Representatives during Construction (other than CPUC EMs):

Katie Vinzant, USFS.

SEGMENTS 7 AND 8 – LOS ANGELES AND SAN BERNARDINO COUNTIES

Summary of Activity

In support of the CPUC decision on July 11, 2013 (13-07-018) to remove the already constructed overhead towers in Chino Hills and place the circuit underground (500 kV Underground), Notice to Proceed (NTP) #38 was issued by CPUC on August 23, 2013 (see Table 1) for tower and foundation removal which has been completed. NTP #40 for vegetation removal and temporary fence installation was issued on May 30, 2014, NTP #41 (revised) for the underground installation was issued on September 19, 2014, and NTP #42 (revised) for the Eastern and Western Transition Stations was issued on February 10, 2015 (see Table 1). Final Engineering Concurrences will be submitted for 500 kV Underground related substation modifications and permanent fencing in the future.

Currently, there are two contractors conducting work on Segments 7 and 8: PAR (overhead transmission line Segments 7 and 8, Phase 4 and 500 kV Underground), and Henkels and McCoy (overhead transmission line Segment 8, Phases 1 and 3).

Segments 7 and 8 66 kV:

1. No construction activities were conducted during the subject week.

Segment 7

2. Construction and site stabilization are complete. The 220 kV line of Segment 7 has been energized from Segment 6 through to the Rio Hondo Substation.
3. Hydroseed application for site stabilization occurred at various locations throughout Segment 7.

To date, for Segment 7 100% of the conductor of the existing 220 kV Antelope-Mesa line has been removed and 100% of the structures have been removed. Of the 81 new double circuit 500 kV structures on the Mira Loma–Vincent line, 100% of foundations are complete, 100% of towers are complete, and 100% of wire has been strung.

Segment 8 Phase 1

4. BMP crews worked at various locations repairing and maintaining erosion control materials.
5. Light grading and vegetation removal occurred at various locations throughout Phase 1.
6. Installation of underground fiber cable and anchors occurred at Tower M55-T2.
7. Civil and SWPPP closeout inspections continued at Towers M55-T2 to M59-T3.

To date, 100% of the conductor and structures have been removed from the existing 220 kV Chino-Mesa and Mira Loma–Walnut and Mira Loma–Olinda lines. Of the new 31 structures in Phase 1, 100% of foundations have been installed, 100% of towers have been erected, and 100% of conductor has been installed.

Segment 8 Phase 2

8. Construction is complete. Both 220 kV circuits (Chino–Mira Loma #1 and #2) were energized in June 2011.

Segment 8 Phase 3

9. BMP crews worked at various locations repairing and maintaining erosion control materials.
10. Minor grading and vegetation removal occurred between Towers M65-T2 and M72-T4.
11. Wire inspections and punch list items were conducted at various locations.

To date, 100% of the conductor and structures have been removed from the existing 220 kV Chino-Mesa and the Chino-Soquel 66 kV lines. Of the 53 new structures in Phase 3, 100% of foundations have been installed, 100% of towers have been erected, and 100% of conductor has been installed.

Segment 8 Phase 4

12. BMP crews worked at various locations repairing and maintaining erosion control materials.
13. Final grading and vegetation removal occurred at various locations throughout Phase 4.
14. Civil crews worked on dragging sites for positive drainage throughout Phase 4.
15. Decompaction and hydroseeding for restoration and erosion control continued throughout Phase 4 work areas (see Figure 3).
16. Wire inspections and punch list items were conducted at various locations.
17. Fence repairs were performed, where required, between Towers M40-T4 and M42-T6.
18. Civil and SWPPP closeout inspections occurred at various locations throughout Phase 4.

To date, 100% of the conductor and 100% of the structures on the existing 220 kV Chino-Mesa line have been removed. Of the 92 new structures in Phase 4, 100% of foundations are complete, 100% of towers are complete, and 100% of wire has been strung.

500 kV Underground

19. BMP crews worked at various locations installing, maintaining, and repairing erosion control materials.
20. Dust abatement activities were conducted at approved work areas along the right-of-way.
21. Street sweeping took place along paved public roadways adjacent to the right-of-way.
22. Due to a storm resulting in approximately 1.2 inches of precipitation that occurred on March 2, dewatering activities were conducted at various locations along the right-of-way.
23. Potholing activities were conducted along Cork Drive.
24. Excavation activities commenced along Pipeline Avenue.
25. Vegetation removal continued along the right-of-way between Restraint Vault (RV) #2 and RV #4.
26. Trenching, pipe installation, and backfilling continued between Vault Cluster (VC) #12 and VC #13, and along the Foxwood and Maplewood Street crossings. Excess soil removed from between VC #12 and VC #13 was imported to the Eastern Transition Station (ETS).
27. Drilling continued at the first horizontal directional drilling (HDD) long bore location between VC #11 and VC #12.
28. Grading activities associated with slope excavation and road/pad development continued at VC #1 and RV #1, and between VC #4 and RV #4, respectively.
29. Vault cluster excavations and vault placement continued at VC #2, VC #6, VC #7, VC #11, and VC #12. The excavations are fenced and wildlife escape ramps are installed at the end of each day.
30. Grading and key excavations took place at the Western Transition Station (WTS). Soil import and export continued.
31. Contaminated soil remediation and removal was conducted at the ETS.
32. Bird deterrent netting installation continued on vegetation within the right-of-way between Maplewood Drive and Lost Trails Drive. Netting was also installed on stationary equipment at various locations along the right-of-way. SCE Biological Monitors conducted routine inspections of bird netting throughout the right-of-way.

Environmental Compliance:

1. SCE is preparing weekly maintenance/notification logs for SWPPP compliance. During the subject week, a total of three incidents were reported as overdue. A total of two new maintenance actions were identified.
2. Per conditions of SCE's Site Specific Dewatering Plan for Standing Water South of VC #2, gravel bags wrapped with plastic sheeting were installed along the western edge of the disturbance area to create an impermeable barrier between the disturbance area and the jurisdictional feature to the west. However, the barrier was breached as a result of a storm that occurred on March 2 (see Figure 4). SCE received conditional approval from CDFW to conduct dewatering activities, as needed, at the site on February 27. Since grading activities were completed in the area where the barrier was installed prior to the storm, no dewatering activities were performed and the water breaching the barrier was allowed to naturally recede.
3. SCE received conditional approval from CDFW on March 5 to proceed with activities detailed in the revised 500 kV Underground Stream Diversion Site Specific Plan at VC #2 (submitted on January 30, 2015). Conditions for the approval include full-time monitoring by a qualified least Bell's vireo Monitor, pre-diversion notification, and monthly biological observation reporting. No construction activities associated with the stream diversion at VC #2 were conducted during the subject week.

4. SCE submitted a request for a five-year term extension to the current CDFW Lake and Streambed Alteration Agreement on March 5. The existing agreement is set to expire on May 1, 2015. Additional time is required to complete HDD activities and for any unforeseen maintenance repairs or design changes. To date, there has been no response from CDFW.
5. The CPUC was properly notified via email that extended work hours would be required for vault installation activities at VC #6 during the subject period.
6. Paleontological Monitors were present as appropriate during the reporting period to monitor construction activities along Segments 7 and 8.
7. There were no spills reported for Segments 7 and 8 during the subject week. However, on March 7, a frac-out occurred during pilot bore operations associated with HDD drilling between VCs #11 and #12. The incident occurred just east, but not within, the Carbon Canyon Creek Channel (see Figure 5). Clean-up efforts were immediately implemented. No additional impacts were reported. The CPUC/Aspen did not receive notification of this incident until March 9, via email. A subsequent email was sent by the Aspen Lead Environmental Monitor reminding SCE that, per reporting requirements detailed in the Notice to Proceed, the CPUC/Aspen are to be notified immediately upon the occurrence of any frac-out event. A Release Report was submitted on March 16 indicating the final spill amount was estimated to be 150-gallons.
8. On March 3, SCE submitted an Addendum to the 500 kV Underground Horizontal Directional Drilling Plans. The Addendum consisted of an update to include optional pilot hole drilling from east to west between VC #12 and VC #11. The addendum was submitted in order to reduce the potential for future frac-outs and to accelerate the HDD portion of the construction work. The plan included a request to permit the simultaneous drilling from two drill rigs, one in a west to east direction (conducting ream pass) and one in an east to west direction (drilling pilot hole). SCE received conditional approval via email from CDFW and SWRCB on March 6.
9. On March 4, the CPUC Monitor observed two pieces of heavy equipment (an excavator and a front loader) rented by the contractor for work associated with the contaminated soil removal at ETS without project air quality compliance stickers. The CPUC Monitor immediately notified the SCE and Greenstone Environmental Monitors who were onsite during the observation. During the contaminated soil removal, the CPUC Monitor observed adequate compliance with the HASP Plan, including recording air quality measurements (see Figure 6).
10. On March 5, SCE provided notification of one verified sediment discharge to a jurisdictional feature adjacent to WTS as a result of the storm that occurred on March 2. As reported by SCE, sediment and debris was observed outside of approved disturbance limits and within the non-permitted portion of the jurisdictional feature (see Figures 7 and 8). The area affected consisted of riparian vegetation and measured approximately 3-feet wide, 50-feet long, and 1.5-inches deep. The incident occurred within buffers for suitable habitat for least Bell's vireo and California gnatcatcher. Additionally, a potential woodrat midden was adversely affected.
11. The SCE Qualified SWPPP Developer (QSD) had previously authorized numerous red-line alterations to the project SWPPP specifically in preparation of the storm that occurred on March 2. However, due to the nature of the storm (the majority of precipitation fell within a period of one-half hour), several sites within the project area were inundated with flowing water. Consequently, the CPUC Monitor observed areas where flowing water and sediment had breached the erosion control measures (see Figures 9 and 10). Although these individual breaches occurred, SCE BMP crews effectively implemented corrective actions immediately following the storm.
12. SCE submitted to the USFS, CDFW, and the CPUC a weekly nesting bird reporting spreadsheet reflecting nesting birds that have been identified. Twenty-five new nests (including burrowing owl, red-tailed hawk, common raven, killdeer, Cassin's kingbird, California towhee, Bewick's wren, mourning dove, bushtit, song sparrow, Allen's hummingbird, and Anna's hummingbird) were identified on Segments 7 and 8, bringing the total of active nests on Segments 7 and 8 to one hundred and seven.

13. A total of two nest buffer reduction requests were submitted to the CPUC/Aspen for Segments 7 and 8 during the subject week. Additionally, SCE submitted one nest buffer reduction request directly to CDFW for burrowing owl.
14. A total of three new San Diego desert woodrat middens were identified by SCE Biological Monitors during the subject period. There were no midden relocations conducted during the subject period.
15. Burrowing owl, golden eagle, Swainson's hawk, Cooper's hawk, merlin, great blue heron, and California gnatcatcher were among the sensitive species observed on Segments 7 and 8 during the subject week by SCE Biological Monitors.

No CPUC Non-Compliance Reports or Project Memorandum were issued for Segments 7-8 during subject reporting period. Non-Compliance activities for the project to date are summarized in Table 4.

Agency Representatives during Construction (other than CPUC EMs):

None.

CPUC NOTICES TO PROCEED (NTPS) & ANF PERMITTING

Table 1 summarizes the CPUC Notice to Proceed and ANF permitting activity for the Antelope Transmission Projects, Segments 1-3, and TRTP, Segments 4-11, to date.

TABLE 1
CPUC NTPs & ANF PERMITTING
(Updated 03/18/15)

NTP #/ Permit	Date Requested	Date Issued	Segment	Description
CPUC NTPs, Segments 1-3				
<i>For CPUC NTP and Addendum activity on Segments 1-3 prior to 2010, please see Table 1 in Weekly Reports 106, 107.</i>				
#26	12/18/09	01/05/10	1	Expansion of Antelope Substation
CPUC Addendum	12/21/09	01/19/10	1	Permanent AR 19 and access road to Const 34A
CPUC Addendum	12/21/09	01/19/10	1	Permanent refueling basin at Hydrant Yard
#27	12/23/09	01/05/10	3B	Oak Peak Communication Site
CPUC Addendum	01/25/10	02/01/10	2	Reclassification of two temporary roads to permanent and relocation of transposition poles
Revised CPUC Addendum	02/10/10	02/19/10	2	Relocate two previously approved transposition towers from Const 110 to Const 105
#28	02/10/10	02/18/10	3B	Highwind Marshaling Yard
#28 MOD	05/21/12	05/30/12	Highwind Yard	Entrance road and fence relocation.
#29	02/10/10	03/02/10	1	Relocation of the Sagebrush Transmission Line at the Antelope Substation expansion area
CPUC Addendum	03/17/10	03/26/10	3A	Vertical mulching, capping of a portion of the existing roadway, and making this overland route a permanent access for SCE operations and maintenance to Const 43
CPUC Addendum	04/06/10	04/27/10	3B	Elimination of transposition towers in Segment 3B

NTP #/ Permit	Date Requested	Date Issued	Segment	Description
CPUC Addendum	04/16/10	04/22/10	1	Installation of fiber optics surrounding the Antelope Expansion
CPUC Addendum	05/25/10	06/04/10	1	Permanent overland travel routes for Operation and Maintenance inspections
CPUC Addendum	05/25/10	06/04/10	2	Permanent overland travel routes for Operation and Maintenance inspections
CPUC Addendum	11/23/10	12/14/10	Windhub Substation	Place additional riprap at the channel outlet at Windhub Substation, to mitigate for downstream erosion resulting from 2009/2010 rains
#30	12/01/11	02/21/12	3B	Construction of Segment 3B Towers 1-14
#30 MOD	03/21/12	03/26/12	3B	Use of alternate existing access road and change of road improvement designation.
#31	01/16/12	03/05/12	Highwind Substation	Construction of Highwind Substation, Kern County
Final Engineering	06/22/12	07/12/12	Highwind Substation	Relocation of telecommunication tower @ Monolith Substation.
Final Engineering	10/11/12	10/18/12	Highwind Substation	Extension of 12 kV line into Highwind Substation.
Final Engineering	02/04/15	Under Review	Highwind Substation	Installation of a perimeter wall.
#32	12/01/11	03/23/12	3B	Construction of Segment 3B Towers 15-75
CPUC Addendum	12/02/11	03/14/12	3B	Installation of cathodic protection for neighboring pipelines.
#32 MOD	05/11/12	05/25/12	3B	Road changes to Segment 3B Towers 15-78 and shift in Tower 39.
Final Engineering	Resubmit 06/15/12	07/12/12	3B	Gas pipeline cathodic protection changes.
Final Engineering	06/22/12	07/12/12	3B	Telecommunication equipment at Monolith Substation.
Final Engineering	06/12/12	08/13/12	3B	Gas pipeline cover. Data request sent 06/12/12. Additional data submitted to CPUC 08/06/12.
Final Engineering	08/03/12	09/10/12	3B	Road and grading changes and storm drain installation. Additional information requested 08/23/12.
Final Engineering	09/06/12	10/09/12	3B	Use of existing roads for stringing and gradient control mat.
Final Engineering	09/28/12	10/18/12	3B	AC mitigation ground rod testing and relocation of test site.
Final Engineering	10/19/12	11/01/12	3B	Additional AC Mitigation Zinc ribbons and ground rods.
Final Engineering	12/13/13	1/27/14	3B	Additional gradient control mats for pipeline protection.
Final Engineering	09/05/14	12/16/14	3B	Permanent O&M access roads and work areas.

NTP #/ Permit	Date Requested	Date Issued	Segment	Description
CPUC NTPs Segments 4-11				
#1	01/13/10	02/11/10	4, 5, 10	Yard 28
#2	01/28/10	03/10/10	9	Vincent Substation Expansion
Final Engineering	09/18/14	10/07/14	9	Vincent Substation upgrades associated with 500 kV Underground.
#3	03/09/10	04/01/10	7,8	Rancho Vista Yard
CPUC Addendum	04/09/10	04/19/10	9	Changes to Substation components
#4	01/27/10	04/26/10	7, 8	Segment 7 and 8 Cell Sites
#5	01/27/10	04/30/10	7	Segment 7 Telecom
#6	03/29/10	05/12/10	7,8	Mesa Materials Storage Yard
#7	05/12/10	05/28/10	8	Segment 8 telecommunications
#7 Mod	08/20/10	08/20/10	8	Minor re-routes to Segment 8 Telecom
#8	04/27/10	06/04/10	8	Segment 8 Contractor Yards
#9	07/21/10	07/29/10	7	Segment 7 Contractor Yards
#10	04/08/10	08/03/10	7, 8	66 kV re-route and relocation
#10 Mod	01/28/11	02/04/11	7/8 66 kV	Replace 14 existing wooden H-frames poles with steel H-frame poles in order to support the double 66 kV circuit
#10 Mod	12/03/10	Retracted by SCE	7/8 66 kV	Change the design of the 66 kV line entry into the Chino Substation from underground to overhead. Visual simulation pending.
#10 Mod	03/15/11	03/22/11	7/8 66 kV	Removal and replacement of 21 wood poles with lightweight steel poles within Rio Hondo Substation
#10 Mod	04/22/11	04/29/11	7/8 66 kV	Underground telecom
#10 Mod	04/22/11	05/03/11	7/8 66 kV	Chino pole removals
#10 Mod	05/23/11	06/02/11	7/8 66 kV	Realignment of approximately 500 feet of 66 kV underground transmission line
#10 Mod	07/20/11	07/25/11	7/8 66 kV	Dusty underground connection
#10 Mod	08/26/11	09/01/11	7/8 66 kV	New Fiber Optic Underground trench
#10 Mod	08/29/11	09/08/11	66 kV	Insulator replacement in Montebello Hills
#10 Mod	09/28/11 additional information submitted 10/11/11	10/21/11	66 kV	Additional work areas and poles
#10 Mod	10/31/11	11/04/11	7, 8 66 kV	Additional underground trenching near Edison Avenue
#10 Mod	11/02/11	11/09/11	66 kV	Pole removal along Siphon Road

NTP #/ Permit	Date Requested	Date Issued	Segment	Description
#10 Mod	12/13/11	12/22/11	7/8 66 kV	San Gabriel Dip extra work space and vault shift
#10 Mod	01/31/12	03/01/12	7/8 66 kV	Removal and installation activities at Pole No. 1431134E
Final Engineering	08/06/12	08/13/12	7/8 66 kV	Structure Installation, various reframing, installation of ground and guy wire, and shift activities.
Final Engineering	08/06/12	08/13/12	7/8 66 kV	Removal of Structures and performing sag adjustment activities.
Final Engineering	12/09/13	12/18/13	7/8 66 kV	Additional duct bank installation and work areas for telecom relocation in Chino.
Final Engineering	11/18/14	12/04/14	7/8 66 kV	New underground duct bank and rerouting of telecom line in Chino.
#11	05/08/10	08/12/10	8	Segment 8 Transmission Line, Chino Hills, Phase I
#11 Mod	09/07/11	09/12/11	8	Increased grading limits for access road to towers M57-T1 and M24-T1A
#11 Mod	01/03/12	01/05/12	8	Relocation of a distribution pole and use of associated disturbance areas
#11 Mod	12/19/11	01/17/12	8	Structure additions or modifications, and associated structure work areas/access
Final Engineering	05/28/13	06/18/13	8	Modification of access road from Everest Drive to M59-T2.
Final Engineering	10/21/14	10/28/14	8	Permanent grading changes to access road to Tower M59-T3.
#12	07/28/10	08/20/10	4, 5, 10	Segment 4, 5, 10 Contractor Yards
#13	07/19/10	08/24/10	8	Segment 8 Transmission Line, Phase 2 and 3
Final Engineering	06/22/12	07/23/12	8	Addition of Towers M0-T9A and M66-J8, Segment 8 Phase 3.
Final Engineering	01/31/13	04/30/13	8	Access road and structure shifts.
Final Engineering	02/20/15	Under Review	8	66k V, Distribution, and Telecommunications Line Relocation and Lowering in the City of Ontario.
#14	08/25/10	09/03/10	4	Partial Transmission Line work associated with an LADWP outage
#15	08/13/10	09/10/10	5	Segment 5 Transmission Line
#15 Mod	03/08/11	03/14/11	5	Modification of FOC alignment
#15 Mod	06/16/11	06/21/11	5	Additional disturbance areas for grading limits in 5 locations
#15 Mod	06/16/11	06/24/11	5	Temporary additional workspace near Tower 20
#15 Mod	10/18/11	10/25/11	5	Relocate CT 68 and associated extra work space
#15 Mod	03/23/12	03/30/12	5	Additional disturbance areas for drainage drain installation.

NTP #/ Permit	Date Requested	Date Issued	Segment	Description
#15 Mod	03/14/12	04/18/12	5	Installation of two H-frame structures within the Sagebrush alignment to allow of clearance or TRTP conductor
Final Engineering	07/27/12	08/13/12	5	Installation of guard rails at Tower 19.
Final Engineering	09/17/12	09/17/12	5	Fencing for retaining wall at Construct 42.
Final Engineering	06/25/14	07/17/14	5	Additional MacCarthy drain installation at four locations.
#16	08/30/10	09/13/10	4	Segment 4 Transmission Line
Final Engineering	11/15/12	11/20/12	4	Installation of a transition pole outside of Whirlwind Substation.
#17	08/10/10	09/24/10	7	Segment 7 Transmission Line
#17 Mod	01/13/11	02/25/11	7	Segment 7 66 kV wreck-outs
#17 Mod	07/06/11	07/19/11	7	Access road additions, modifications, grading limit modifications, and OPGW splice sites
#17 Mod	07/15/11	07/19/11	7	Removal of existing overhead ground wire and skywrap and replacement with fiber optical ground wire
#17 Mod	02/24/12	03/01/12	7	Extra work space at M32-T4
Final Engineering	03/12/13	03/20/13	7	Recreational trail reroute at Towers M39-T4 and M39-T5.
Final Engineering	07/08/13	08/07/13	7	Expansion of grading area to construct access road to Tower M27-T3 in Duarte.
Final Engineering	09/10/13	09/25/13	7	Access roads to three locations in Segment 7.
Final Engineering	12/18/13	01/17/14	7	Changes to permanent grading impacts at M27-T2.
Final Engineering	06/06/14	06/20/14	7	Erosion repairs on access road to tower M27-T3.
Final Engineering	01/27/15	01/30/15	7	USACE give back roads.
#18	10/13/10	10/15/10	7	Potrero Grande Contractor Yard
#19	10/29/10	11/12/10	4, 5, 10	Avenue F Contractor Yard
#20	10/08/10	11/30/10	10	Segment 10 Telecom
#20 Mod	04/19/11	05/06/11	10 Telecom	Changes to telecom route. ITP/BO acreage confirmation pending
#20 Mod	06/17/11	06/24/11	10 Telecom	Additional trenching and vault placement along Oak Creek Road
#21	11/18/10	12/09/10	6 & 11	Vincent North Material Yard
#21 Mod	06/10/11	06/24/11	Vincent North MY	Telephone and IT installation at Vincent North Material Yard
#22	11/18/10	12/09/10	6 & 11	Vincent South Material Yard

NTP #/ Permit	Date Requested	Date Issued	Segment	Description
CPUC Addendum	11/22/10	12/14/10	Vincent Substation	Section of road widening and riprap extension for the Vincent Substation expansion
#23	12/22/10	01/11/11	6 & 11	Material Yard 75
#24	11/10/10	01/13/11	8	Segment 8 West, Phase 4 Transmission Line
#24 Mod	06/15/11	06/20/11	8	Access road to M3-T3A and M48-T1, Segment 8 Phase 4
#24 Mod	11/14/11	11/17/11	8	Lower 66 kV line at I-605 shoofly
#24 Mod	11/30/11	12/15/11	8	Shift in M52-T2 structure location and associated extra work space and access roads
#24 Mod	03/20/12	04/16/12	8	Segment 8, Phase 4 Access road and structure additions and modifications.
#24 Mod	04/03/12	04/24/12	8	Access roads on Rose Hills and Sanitation District roads.
#24 Mod	04/11/12	04/24/12	8	Permanent access road to M49-T1 and M2-T4a
#24 Mod	05/22/12	06/05/12	8	Curve widening along access roads between M49-T2 and M51-T5.
Final Engineering	11/28/12	12/06/12	8	Final Engineering for permanent access road leading to M49-T2.
Final Engineering	03/05/13	05/07/13	8	M43-T3/M8-T1A access road.
Final Engineering	02/11/13 Additional information submitted 05/28/13	06/05/13	8	Two Phase 4 turnout expansions.
Final Engineering	05/16/13	06/11/13	8	Access road at M44-T3/M7-T2B.
Final Engineering	01/17/14	Partial approval 01/30/15	7 & 8	USACE give back roads.
Final Engineering	04/15/14	05/14/14	8	Changes to grading and contractor work limits at M43-T3.
#25	11/19/10	01/13/11	8	Fullerton (1) and Tonner Canyon (2) Contractor Yards. USFWS/CDFG survey requirements for Tonner Canyon required. Only Fullerton CY approved under NTP #25.
#26	06/22/10	01/14/11	9	Whirlwind Substation
#27	01/03/11	03/08/11	10	Segment 10 Transmission Line
#27 Mod	10/13/11	10/21/11	10	Relocation of Tower 39, in line shift
#27 Mod	11/01/11	11/10/11	10	Additional guard pole and turning radii locations
#27 Mod	11/14/11	11/21/11	10	Modify road near CT 25
CPUC Addendum	03/01/11	03/17/11	9	Bridge construction to access Whirlwind Substation
#28	04/22/11	05/06/11	6, 11	Construction Yard 58
#29	05/06/11	05/13/11	6, 11	San Gabriel Yard

NTP #/ Permit	Date Requested	Date Issued	Segment	Description
#30	05/16/11	06/07/11	4, 5	Modifications to the Midway Vincent #3 T/L
#31	06/24/11	06/30/11	11A	Segment 11A Transmission Line Goodrich to Mesa (off ANF)
#32	09/12/11 09/14/11 10/13/11	11/09/11	6A	Construction of Towers 1-35 on private (non-ANF) lands
#32 Mod	01/18/12	02/08/12	6A	Additional work areas outside of ANF lands
Final Engineering	08/28/12	09/11/12	6A	Rev 4 engineering changes, non-ANF.
Final Engineering	02/21/13	03/29/13	6A	Gate replacement/installation.
Final Engineering	05/05/14	05/14/14	6A	Gate replacement/installation.
#33	12/02/11	01/13/12	6B	Construction of Towers 35-72 on private (non-ANF) lands
#34	01/24/12	02/13/12	11D	Gould and Goodrich Substations
#35	01/26/12	05/16/12	6C	Construction of Towers 72-113 on private (non-ANF) lands
Final Engineering	07/15/13	08/05/13	6C	Modifications to grading area near Tower 113 off ANF lands.
Final Engineering	04/08/14	04/11/14	6C	McCarthy drain near Constr 113.
Final Engineering	07/30/14	08/12/14	6C	Additional McCarthy drain installation near Const 113.
#36	07/25/12	07/30/12	8	Geotechnical investigations in Chino Hills.
#37	07/20/12 revised 01/09/13	04/25/13	11B	Construction of Segment 11B, Gould to Goodrich (off ANF). Pending FAA concurrence.
#38	08/01/13	8/23/13 (revised)	8	Chino Hills Underground: removal of existing towers and foundations.
#39	08/14/13	10/10/13	11C	Construction of Segment 11C between Vincent and Gould Substations.
Final Engineering	01/07/14	03/21/14	11C	Engineering Changes at M0-T1, CT 2 and 5.
	10/16/13	Comments to SCE 10/29/13 & 11/01/13	8	Chino Hills Underground: underground conduit installation. <i>This NTP request is being replaced (see below).</i>
#40	04/15/14	05/30/14	8	Chino Hills Underground: vegetation clearing and temporary fence installation.
#41	06/02/14	09/19/14 (Revision 2)	8	Chino Hills Underground: conduit installation. Additional maps provided 10/25/14 for vault engineering changes.

NTP #/ Permit	Date Requested	Date Issued	Segment	Description
#42	11/17/14	02/10/15 (Revision 1)	8	Eastern and Western Transition Station construction, Chino Hills.
Final Engineering	3/05/15	Under review	8	Telecom and distribution connections to Transition Stations.
ANF PERMITTING – Segment 1, 6 & 11				
	11/29/07	12/14/07	1	Radio Repeater – installation of a temporary radio repeater site on Sierra Pelona Ridge to provide communication during construction activities tied to the project. Improvement installation began Jan. 11
	09/27/07	12/14/07	1	Geotechnical testing – 23 geotechnical borings are authorized on National Forest lands to provide additional information that will be used in the design of the transmission towers. Notice to proceed was signed Jan 31 to begin work the week of Feb. 3
		07/14/08	1	Removal of the 66 kV conductor within the ANF, from Tower 7-3 (near southern Forest boundary) to 16-3 (near Bouquet Reservoir) Phase I
		09/23/08	1	Removal of the 66 kV conductor within the ANF, Phase II
		10/23/08	1	Construction of the 500 kV transmission line and wreck-out of the 66 kV towers in the ANF, Section 2
SUP		09/21/11	6	Construction of Segment 6 towers
NTP		11/07/11	6A	Authorization to start construction of Towers CT1-CT35
NTP		01/11/12	6B	Authorization to start construction of Towers CT35-CT72
NTP		05/14/12	6C	Authorization to start construction of Towers CT73-CT113.
NTP		04/23/13	11B	Authorization to start construction of Segment 11B.
NTP	07/29/13	08/22/13	8	Removal of towers and foundations from Chino Hills Underground alignment.
Change Request #1	01/05/12	01/09/12	6	Radio repeater station locations allowed under SUP
Change Request #2	01/20/12	01/31/12	6	Use of Turnaround, water tank, and Rincon Red Truck Trail
Change Request #3	01/12/12	01/31/12	6	Engineering changes to reduce soil cut volume and minimize stockpile locations
Change Request #4	02/12/12	05/11/12	6	Engineering changes to 6C
Change Request #5	02/23/12	02/23/12	6	Redbox 16 kV Shoofly near Tower 71
Change Request #6	02/27/12	02/29/12	6	Extension to complete wire removal work within Arroyo toad restriction area up to March 3
Change Request #7	03/16/12	03/16/12	6	Barley Flats Repeater

NTP #/ Permit	Date Requested	Date Issued	Segment	Description
Change Request #8	05/10/12	Additional information requested 06/01/12	6, 11	Modification of Construction Work Plan to describe Helicopter Assembly Yard (HAY) development activities.
Change Request #9	06/08/12	06/22/12	6, 11	AQ-1d Use of wire pullers with pre 2006 engines
Change Request #10	08/02/12	09/06/12	6	Temporary Work areas for guy wire staking.
Change Request #11	08/14/12	09/04/12	6	Civil engineering changes to Segment 6B.
Change Request #12	08/22/12	Denied	6	Helicopter removal of 4 wreck-out towers in 6B.
Change Request #13	08/22/12	09/04/12	6	Additional work space at Construct 35.
Change Request #14	08/23/12	09/10/12	6	Additional work spaces in Segment 6A.
Change Request #15	08/29/12	11/15/12	6, 11	Addition of repeater to Mount Sally.
Change Request #16	09/08/12	09/17/12	6, 11	BMP maintenance in arroyo toad areas during restricted season.
Change Request #17	09/10/12	01/25/13	6	Foot trail and landing zone changes.
Change Request #18	09/11/12	09/20/12	6, 11	Use of pullouts along Big Tujunga for water tank storage.
Change Request #19	09/16/12	09/18/12	6	Using soil from off ANF (near Tower 5) at Construct 8.
Change Request #20	11/19/12	01/26/13	6	Installation of McCarthy drain at Construct 44.
Change Request #21	11/19/12	01/26/13	6	Installation of McCarthy drain at 59B.
Change Request #22	11/30/12	01/26/13	6	Installation of McCarthy drain at 192.
Change Request #23	12/03/12	05/21/13	6	Temporary work area at M31-T2.
Level 2 Change Request #24	11/30/12	01/08/13	6, 11	Allow overnight storage of jet fuel at Chilao Summit Helicopter Assembly Yard.
Change Request #25	12/18/12	01/26/13	6	Installation of a pipe gate at Gold Queen Mine near Tower 29.
Change Request #26	01/04/13	01/26/13	6	Repair of access road using Hilfiker wall near Tower 78.
Change Request #27	01/19/13	01/26/13	6	Removal of rock on Alder Creek Road.

NTP #/ Permit	Date Requested	Date Issued	Segment	Description
Change Request #28	02/04/13	02/14/13	6	Arroyo toad work completion.
Change Request #29	02/26/13	05/21/13	6	Trail landing zone 91.
Change Request #30	02/11/13	05/21/13	6	Placement of cut vegetation along access roads.
Change Request #31	03/19/13	05/21/13	6	Installation of gates on access roads to Mill Creek, and Constructs 68-70.
Change Request #32	04/29/13	06/11/13	6	Installation of a double McCarthy drain near Construct 79, Segment 6C.
Change Request #33	05/20/13	06/28/13	6	Removal of telecom wire removal near Tower 95, Segment 6C.
Change Request #34	08/14/13	08/14/13	6	Sunday work at Cogswell HAY during August and September 2013.
Change Request #35	08/28/13	No longer needed	11	Installation of radio repeater at Mt. Vetter.
Change Request #36	10/15/13	12/04/13	6, 11	Leveling of high/low spots in HAYs located on the ANF to reduce the amount of wood blocking used for tower assembly.
Change Request #37	12/10/13	01/15/14	11	Additional McCarthy drain at Construct 6.
Change Request #38	12/25/13	07/24/14	11	Engineering changes near towers 9X, 14, 23, and 25.
Change Request #39	11/21/13	01/29/14	11	Change from Conventional ground based tower removal to Helicopter based removal of 10 wreck-out towers on the ANF.
Change Request #40	02/05/14	06/24/14	11	Approval to use Stringing equipment with pre-2006 engines and blanket approval for use of this type of equipment.
Change Request #41	02/13/14	06/11/14	11	Use of a road/turnaround near Construct 18.
Change Request #42	06/19/14	07/30/14	6	Use of fill from Littlerock quarry for import to Tower 60.
Change Request #43	06/19/14	Denied 07/30/14	6	Use of fill from pull site 5/6 for import to Tower 60.
Change Request #44	08/15/14	10/02/14	11C	Additional Wire Area for Wire Stringing at Construct 31.
Change Request #45	09/05/14	10/02/14	6C	Additional McCarthy drain at Civil ID 324 near Construct 74.

VARIANCE & TEMPORARY EXTRA WORKSPACE REQUESTS

Variance Requests and Temporary Extra Workspace (TEWS) Requests submitted to date are summarized in Tables 2 and 3, respectively.

TABLE 2
VARIANCE REQUESTS
 (Updated 03/18/15)

Variance Request	Date Requested	Date Issued	Segment	Description
<i>For Variance Request activity on Segments 1-3 prior to 2010, please see Table 2 in Weekly Reports 106, 107.</i>				
Variance Requests, Segments 1-3				
VR #66	01/11/10	01/19/10	1	Modify the requirements of Mitigation Measure B-1a (Provide Restoration/Compensation for Impacts to Native Vegetation Communities) to fulfill a request from the property owner
VR #67	01/15/10	01/19/10	3A	Modify requirements of Mitigation Measure B-27b and APMs BIO-2 and BIO-7 to preserve cut Joshua trees onsite instead of off-site disposal to the extent possible for habitat creation purposes
VR #68	04/09/10	04/12/10	1	Release restoration requirements on road to wreck-out Tower 20-4 in Section 3
VR #69	05/04/10	05/07/10	1	Contractor Yards surrounding Antelope Substation
VR #69 MOD	07/29/10	08/02/10	1	Additional space for storage at Antelope Substation for material being delivered for Antelope, Vincent and Whirlwind substations
VR #70	06/02/10	06/04/10	1	Additional disturbance areas adjacent to the pole erections for the 220 kV Sagebrush relocation work around the Antelope Substation
VR #71	06/22/10	06/23/10	1	Change in construction work hours for work on the Sagebrush 220 kV transmission line
VR #71 MOD #1	06/24/10	06/25/10	1	Expansion of construction hours for Sagebrush 220 kV T/L and foundation installation work at Antelope Substation
VR #71 MOD #2	07/08/10	07/09/10	1	Further expansion of construction hours for Antelope Substation construction
VR #71 MOD #3	11/18/10	11/19/10	1	Further expansion of construction hours for Antelope Substation construction
VR #72	02/07/12 Revised 06/06/12	08/08/12	1	Exemption of restoration requirements in areas where livestock grazing has occurred.
VR #73	03/07/14	03/24/14	3B	Increase gradient mat work areas @ 2 locations.
#74	07/30/14	08/29/14	1	Exemption of restoration requirements for selected locations of Segment 1.
Variance Requests, Segments 4-11				
VR #1	03/25/10	03/26/10	9-Vincent	Expand grading area of Vincent substation by 15 feet for temporary turnaround areas for equipment

Variance Request	Date Requested	Date Issued	Segment	Description
VR #2	05/25/10	05/27/10	7	Relocation of helicopter landing zone for Segment 7 telecommunications work
VR #3	06/08/10	06/10/10	7	Clarification of Segment 7 Telecom construction operating hours and to work the weekend dates of June 12, 13, 19, and 20, within the City of Irwindale
VR #4	08/11/10	08/13/10	9-Vincent	Utilize a fire hydrant along an unpaved spur road and also place two 10,000-gallon elevated water storage tanks adjacent to the hydrant
VR #5	08/20/10	08/20/10	7	Night work for Segment 7 Telecom
VR #6	08/26/10	08/26/10	8	Work on weekends for Segment 8 Telecom
VR #7	09/10/10	09/16/10	8	New wire setup and pull sites for Segment 8 Phase 1
VR#8	09/16/10	09/16/10	8	Clarification of construction hours for Segment 8 Phase 1
VR #9	09/14/10	09/20/10	Yard 28 & Rancho Vista Yard	Hotwork (welding and cutting) at Yard 28 and Rancho Vista Yard
Verbal	10/08/10	10/08/10	8, Phases 2 & 3	Wire sites for construction on Sunday, October 10
VR #10	10/08/10	10/13/10	8	Additional Phase 2 & 3 wire sites
VR #11	10/01/10	10/15/10	8	Relief from focused biological survey requirements because of restricted property access, Phase I
VR #12	10/06/10	10/15/10	8	Additional Phase I wire sites
VR #13	11/09/10	11/17/10	5	Additional wire stringing sites
VR #14	11/17/10	11/19/10	8	Additional Shoofly pole in Tonner Canyon, Segment 8, Phase 1
VR #15	11/18/10	11/19/10	5	Additional guard poles between Highway 14 and Sierra Highway
VR #16	11/12/10	11/19/10	5	Realign an existing access road at the southeastern corner of the Vincent Substation 500 kV expansion area to allow for the construction of the Segment 5 T/L
VR #17	Revised 11/17/10	11/22/10	8	Additional 66 kV material storage near Rio Hondo and Chino Substations
VR #18	11/24/10	12/01/10	5	Continue use of two existing access roads that are approved under a TEWS
VR #19	Revised 11/23/10	12/01/10	5	Additional wire stringing sites
VR #20	11/30/10	12/02/10	8	Revised alignment of an access road for safer access to tower sites
VR #21	12/03/10	12/03/10	7/8	Remove fabric on chain-link fence surrounding Mesa MY because of graffiti
VR#22	11/22/10	12/07/10	7	Additional wire stringing sites
VR #23	12/03/10	12/09/10	7	Ten additional access roads

Variance Request	Date Requested	Date Issued	Segment	Description
VR #24	12/17/10	12/20/10	8	Use of an existing concrete parking area/pad in Tonner Canyon as a helicopter landing zone and equipment staging and parking area, Segment 8, Phase I
VR #25	12/17/10	12/20/10	8	Revision to the Structure Work Area for Tower M73-T2, Segment 8, East (Phase III)
VR #26	01/06/11	01/06/11	7	Revised disturbance areas in Montebello Hills
VR #27	01/12/11	01/13/11	7	Relocation of interset tower M54-T3a
VR #28	01/14/11	01/19/11	Yard	Grading at Vincent South Material Yard
VR #29	01/14/11	01/19/11	Yard	Additional parking areas at Rodeo North and South Contractor Yards
VR #30	01/28/11	01/28/11	Yard	Grading at Vincent North Material Yard
VR #31	02/04/11	02/04/11	7, 8	Revised 66 kV underground alignment along Edison Avenue in the City of Chino
VR #32	02/04/11	02/07/11	Whirlwind	Temporary offsite equipment loading/unloading and parking area
VR #33	02/08/11	02/10/11	8	Access route to Tower M0-T6
VR #34		02/11/11	Whirlwind	Temporary concrete slab within work area (VR #32)
#35	02/14/11	02/14/11	8	Access to additional wire setup sites between Oaks Avenue and Tower M46-T7b
#36	02/14/11	02/15/11	10 Telecom	Move two wood poles approximately 5 feet out of the drainage along Oak Creek Road
#37	02/19/11	02/24/11	6	Modification to Yard 75 boundaries
#38	02/23/11	02/25/11	8	Expansion of wire site for Phase 4 work
#39	03/01/11	03/03/11	All Yards	Replace fence fabric screening with slats for safety reasons during high wind events
#40	03/02/11	03/03/11	5	Additional access road to Construct 29
#41	03/04/11	03/08/11	5	Additional access road improvements
#42	03/04/11	03/08/11	4	Additional access road improvements
#43	03/03/11	03/10/11	8	Additional access to Tower M2-T2
#44	03/16/11	03/18/11	8	Tower M2-T5 and access road shift within SCE ROW
#45	03/22/11	03/25/11	5	Soil Stockpile areas at three locations
#46	03/25/11	04/04/11	7	Temporary disturbance areas for underground disturbance, 66 kV
#47	04/05/11	04/06/11	8	Wire Setup Sites for Tower M2-T2
#48	04/06/11	04/08/11	5,8	Start of construction prior to Los Angeles County Public Works grading permit issuance
#49	04/06/11	04/08/11	8	Extended work hours on Segment 8, Phase 2
#50	04/05/11	04/13/11	8	Turnouts along Sanome Mountain Way
#51	03/29/11	04/13/11	8	Water bar repair and construction
#52	04/11/11	04/14/11	7	Additional access to Interset M54-T3A

Variance Request	Date Requested	Date Issued	Segment	Description
#53	04/05/11	04/15/11	5, 8	Permission to build slope stabilization Towers prior to L.A. County Public Works Permit
#54	04/14/11	04/18/11	5	Soil stockpile area near Tower 27
#55	04/12/11	04/20/11	4	Relocate two towers and associated access roads and disturbance areas within ROW
#56	04/13/11	04/20/11	Yards	Installation of temporary power poles to provide power to Vincent North and Vincent South Material Yards
#57	04/07/11	04/25/11	7	Additional improvements to Van Tassel Motorway
#58	05/02/11	05/05/11	8	Tower M48-T4 access road
#59	05/06/11	05/09/11	8	Segment 8 Phase 1, M49-T1 and M59-T2 additional parking, staging and turn-around areas
#60	04/25/11	05/13/11	7	Wire Setup Site expansions
#60 Mod	04/25/11	06/06/11	7	Additional Wire Setup Site 7.1a
#61	05/11/11	05/13/11	5	Additional access off Godde Hill Road
#62	05/12/11	05/18/11	7	Soil stockpile area near M27-T3
#63	05/19/11	05/23/11	8	Change to previously approved access road at M61-T1, Segment 8 Phase 1
#64	05/23/11	06/06/11	8	Extra work space to accommodate wire tagging areas
#65	05/25/11	06/06/11	8	Extra parking, staging and turnaround at Tower M48-T3
#66	05/26/11	06/06/11	5	Elizabeth Lake access road
#67	05/27/11	06/06/11	8	Additional workspace near M23-T2A in Segment 8 Phase 1
#68	05/10/11 Revised 06/14/11	06/24/11	All	Allow continued use of approved TEWS access roads if nesting birds subsequently move in
#69	06/14/11	CPUC Review	All	Variance to MM AQ-1d
#70	06/14/11	06/30/11	5	Change in pulling site locations at CT 22, 43, 51a & 57
#71	06/27/11	07/06/11	8	Extra workspace at M57-T2 and M57-T3
#72	07/01/11	07/08/11	8	Additional workspace at the I-605 Shoofly area
#73	06/01/11	07/08/11	10	Shift in Tower 43 Wire Setup Site. Additional information provided 07/07.
#74	07/22/11	07/28/11	11A	Modification of guard pole sites along Segment 11A
#75	07/25/11	08/03/11	11A	Equipment AQ-1d compliance
#76	07/18/11 Revised 07/25/11	08/03/11	5	Relocation of a Wire Stringing Site near Tower 34. Inquiry sent 07/27
#77	07/27/11	08/03/11	4	Two additional Wire Stringing Sites near Towers 35 and 51. Inquiry sent 08/01

Variance Request	Date Requested	Date Issued	Segment	Description
#78	08/03/11	08/04/11	8	Relief from focused biological survey requirements because of restricted property access, Phase I. CDFG approval provided
#79	08/06/11	08/11/11	4	Guard pole site near Tower 52
#80	08/10/11	08/12/11	10	Roadway reclassification and modifications near Tower 83
#81	08/12/11	08/18/11	10	Roadway reclassification and modifications near Towers 48 and 49.
#82	08/18/11	08/30/11	4	Wire setup site (WSS) relocations and new WSS and overland travel routes. Inquiry sent 08/22; response submitted 08/26
#83	07/26/11	08/30/11	8	MA1-T2 and MA1-T4 access road
#84	08/30/11	09/01/11	8	M54-T1 and M54-T2 Access road and staging area
#85	07/15/11	09/12/11	8	Additional guard structure sites at Fullerton Road and WSS at M51-T2, M51-T3, M50-T1, M45-T4 and M6-T2. Gnatcatcher acreages pending.
#86	09/02/11	09/12/11	4	Two guard pole sites
#87	09/09/11	09/12/11	10	Use of existing roads between 90th Street west and Tower 6
#88	09/15/11	09/20/11	4, 5 & 10	Allow for the use of six water trucks that don't meet the requirements of MM AQ-1d
#89	09/15/11	09/22/11	10	Increased turning radii @ CT 67 & 68 and road improvement at CT 74
#90	09/26/11	10/03/11	5	Extra work space for CT 30
#91	09/28/11	10/03/11	5	Addition of mats @ CT 45
#92	10/01/11	10/03/11	4	Segment 4 access road use near Tower 31
#93	09/30/11	10/05/11	5	Additional Disturbance area near Tower 55A
#94	09/28/11	10/12/11	8	Widen the curve of an access road leading to Structure M56-T4
#95	09/30/11	10/12/11	5	Additional disturbance areas at Towers 19, 22, and 25
#96	10/12/11	10/17/11	8	Guard structure site and access road to Structure MA1-T3
#97	10/06/11	10/21/11	8	Telecom wire sites at Rose Hills
#98	10/22/11	11/04/11	4	Additional turning radii and road reclassification associated with Tower M73-T3AX
#99	10/20/11	11/01/11	8	Extra Workspace for topsoil salvage at M56-T3
#100	09/28/11	11/04/11	8	Twenty-four staging and turnaround areas
#100 MOD	09/05/14	09/17/14	8	Addition of helicopter landing at pre-approved sites.
#100 MOD	11/26/14	12/02/14	8	Additional temporary road widening to access WSS.
#100 MOD	12/09/14	01/13/15	8	Use of approved staging area as helicopter landing zone near Tower M49-T4.
#101	11/02/11	11/04/11	5	Additional work space at CT 30, 51a and 61
#102	11/02/11	11/09/11	5	Extra Workspace near Tower 18

Variance Request	Date Requested	Date Issued	Segment	Description
#103	11/04/11	11/09/11	5	Additional guard pole sites
#104	11/02/11	11/09/11	8	Use of 605 Shoofly as Contractor Yard
#105	11/06/11	11/14/11	5	Additional workspace at CT 6, 28B, 44, 68 and M113-T3
#106	11/09/11 & 11/10/11	11/17/11	5	Additional workspace and roadways at CT30
#107	11/16/11	11/18/11	8	Use of Contractor yard previously approved as TEWS, in Chino
#108	11/18/11	11/22/11	5	Extra work space near CT 50, 51a, and 55
#109	12/22/11	01/04/12	4	Additional wire stringing site outside of Antelope Substation
#110	01/13/12	01/10/12	8	Widen road near M55-T2 and M56-T1 in Phase 1
#111	01/11/12	01/17/12	5	Additional vehicle parking and equipment staging near Tower 25
#112	01/12/12	01/17/12	8	Permanent removal of the fabric screening surrounding the Mira Loma Contractor yard
#113	01/11/12	01/27/12	7	Addition of structure work areas in Montebello Hills
#114	01/24/12	02/03/12	5	Additional disturbance areas at Tower 86
#115	02/07/12	02/09/12	7	Expansion of Wire Sites and Guard Pole Structures
#116	01/27/12	03/01/12	8	Additional guard pole sites at M64-T4 and M64-T5
#117	02/24/12	03/01/12	7	Wire setup site expansions near Structures M33-T1 and M41-T4
#118	03/05/12	03/07/12	7	Access road near M42-T6 & WSS 7.75
#119	03/01/12	03/13/12	7	Snub site between M32-T3 and M32-T4
#120	03/02/12	03/15/12	6, Vincent Yard	Access for pedestrian gate at Vincent North Yard
#121	03/16/12	03/20/12	5	Additional work area near Tower 19
#122	02/22/12	03/30/12	8	Running Branch Road staging area
#123	03/27/12	03/30/12	7	Additional parking areas at M39-T1 through M39-T3.
#124	03/26/12	03/30/12	5	Additional disturbance areas near M18-T5.
#125	03/27/12	04/06/12	6, Vincent Yard	Additional power and associated disturbance areas needed at Vincent yards.
#126	04/17/12	04/20/12	7	Additional area for WSS 7.15 on Segment 7
#127	04/04/12	04/23/12	8	Use of existing roads in Rose Hills & Sanitations District.
	03/30/12	Rescinded	6A	Corral relocation near Tower 12.
#128	05/03/12	05/14/12	7	Changes to wire sites and access roads between M30-T1 and M29-T3.
#129	05/01/12	Denied 05/16/12	8	Relief from focused biological survey requirements because of restricted property access, Rose Hills, Phase 4.
#130	06/05/12	06/12/12	6	Use of additional access road near Towers 11 and 12.

Variance Request	Date Requested	Date Issued	Segment	Description
#131	06/03/12	06/06/12	6	Placement of 2 generators and additional road use in Aliso Canyon to provide power during distribution line outage.
#132	06/20/12	07/22/12	8	Curve widening along existing access roads, modified wire set up site and access, at structures M45-T4/M6-T2 and M45-T5 in Segment 8 Phase 4.
#133	07/18/12	08/07/12	6A and 6C off ANF	Guy wire staking outside of disturbance areas to provide stability of suspended loads.
#134	08/24/12	08/29/12	8	Landfill access to tower M45-T1.
#135	08/22/12	09/12/12	8	Construct M45-T5 access road curve widening and pull-outs.
#136	09/25/12	10/04/12	7	Extra work space and drainage crossing at Construct M31-T2.
#137	11/02/12	11/06/12	7	Additional work area for Tower M38-T4.
#138	10/29/12	11/20/12	6, 11	Expansion of Vincent South Material yard.
#139	01/09/13	01/11/13	5	Road Change designation from minimum to medium improvement near Tower 54.
#140	12/10/12	02/07/13	7	Additional wire sites and access road additions.
#141	01/30/13	02/13/13	66 kV	Access to Pole 1723533 along Durfee Avenue.
#142	02/11/13 Additional information submitted 05/28/13	06/05/13	8	Additional work areas and access roads, Segment 8 Phases 1 and 4.
#143	05/23/13	06/05/13	8	Additional access roads, guard poles, and distribution clearances in Phase III.
#144	07/17/13	08/07/13	11B	Pedestrian access to distribution line via trails.
#145	08/15/13	08/23/13	8	Extra work space near Tower M57-T2 in Tonner Canyon.
#146	09/09/13	09/26/13	8	Use of two pull-outs for parking equipment near Towers M44-T3 and M43-T3.
#147	10/09/13	10/17/13	6A	Use of existing access roads for equipment staging.
#148	10/26/13	11/07/13	8	Additional parking areas near M57-T1 in Tonner Canyon.
#149	02/22/12 resubmitted 09/27/13	11/12/13	8	Extra work space @ Tower M60-T1.
#150	11/20/13	12/11/13	11C	Additional work areas near Tower 5.
#151	03/27/14	04/03/14	8	Temporary use of existing access road to M7-T1.
#152	03/31/14	04/09/14	7	Additional extra work space for wire setup near M30-T2 and WSS 713.
#153	04/07/14	04/09/14	8	Additional space for wire stringing in Rose Hills Cemetery.

Variance Request	Date Requested	Date Issued	Segment	Description
#154	04/07/14	04/11/14	8	Additional space for wire stringing near Tower M55-T1.
#155	06/03/14	06/20/14	11C	Use of additional spur roads and pull outs.
#156	06/17/14	07/17/14	8	Additional wire set up site east of M53-T3.
#157	06/27/14	07/17/14	8	Additional wire set up site near WSS 8-4.22.
#158	07/01/14	07/17/14	8	Use of alternative access road to M70-T3/T4; currently approved under TEWS.
#159	07/31/14	08/15/14	7	Guard structure at Tower M35-T4.
#160	08/04/13	08/05/14	7	Additional wire stringing site at Tower M36-T2.
#161	08/14/14	08/29/14	7	Expansion of a guard structure location north of the 60 freeway.
#162	08/20/14	08/29/14	7	Additional wire stringing site near Tower M37-T3.
#163	10/02/14	10/02/14	7	Additional guard pole sites near M40-T5.
#164	09/02/14	10/10/14	8	Helicopter Landing Zone near Tower M69-T2.
#165	11/06/14	11/12/14	7	Additional guard pole site near Mesa Substation.
#166	10/31/14	11/18/14	8	Temporary area for water tanks in two locations for 500 kV Underground.
#167	02/06/15	02/20/15	8	Temporary water pipeline for 500 kV Underground.

TABLE 3
TEMPORARY EXTRA WORKSPACE (TEWS) REQUESTS
(Updated 03/18/15)

TEWS Request	Date Requested	Date Approved	Segment	Description
TEWS, Segments 1-3				
<i>For TEWS activity on Segments 1-3 prior to 2010, please see Table 3 in Weekly Reports 106, 107.</i>				
TEWS, Segments 4-11				
#1	09/30/10	09/30/10	7	Re-phasing work at a tower not previously identified on Rio Hondo–Amador-Jose-Mesa 66 kV
#2	10/08/10	10/08/10	4	Park a boom truck on LADWP access road during the outage
#3	10/12/10	10/12/10	8	Use a wire setup site not previously identified on Chino–Mira Loma No. 1
#4	10/20/10	10/20/10	5	Extra space from wire truck parking near Vincent Substation
#5	10/21/10	10/21/10	7	Use a site not previously identified for staging of equipment and materials at Tower M54-T3a
#6	11/01/10	11/01/10	5	Use of an existing SCE access road
#7	11/01/10	11/03/10	5	Use of an existing road (Parkwood Drive)
#8	11/02/10	11/02/10	8	Use a site not previously identified for vehicle parking and as a helicopter landing zone

TEWS Request	Date Requested	Date Approved	Segment	Description
#9	11/30/10	12/01/10	5	Use 8 existing spur roads as extra parking and turnaround areas
#10	12/02/10	12/02/10	7	Additional access road for on Rio Hondo–Anita No. 2 66 kV
#11	12/08/10	12/08/10	5	Use an existing spur road near Tower 29, north of Elizabeth Lake Road
#12	12/09/10	12/09/10	7	Additional access road near Towers M41-T1 through M41-T3
#13	12/14/10	12/14/10	8	Access road to Tower M0-T6
#14	01/10/11	01/10/11	8	Access road to Tower M2-T5
#15	01/11/11	01/11/11	8	Additional parking area in Tonner Canyon
#16	01/17/11	01/17/11	5	Additional parking and turnaround area near Tower 54
#17	01/18/11	01/18/11	7	Use of a dirt road for access to M41-T4 wire sites
#18	02/04/11	02/04/11	7	Additional access road to Tower M54-T3a
#19	02/11/11	02/11/11	5	Extension for use of mudpit road north of Elizabeth Lake Road
#20	02/15/11	02/25/11	7	Crane parking on Brookridge Road in the City of Duarte
#21	03/02/11	03/02/11	8	Additional parking within Tonner Canyon adjacent to M57-T1
#22	03/03/11	03/03/11	8	Additional parking within Tonner Canyon adjacent to M57-T3
#23	03/03/11	03/03/11	7	Additional parking for a crane along Greenbank and Brookridge Roads in the City of Duarte
#24	03/25/11	03/25/11	8	Additional space within Chino Sub for wire stringing
#25	03/31/11	03/31/11	5	Additional parking on SCE roads near Tower 50
#26	04/11/11	04/11/11	8	Additional access within Pathfinder Park to Tower M9-T1B
#27	04/12/11	04/14/11	8	Mid-span access between M3-T5 and M4-T1 to install sleeves.
#28	04/07/11	04/07/11	5	Additional parking/staging area adjacent to Tower 54; original TEWS had expired
#29	04/07/11	04/07/11	5	Use of private dirt road so that Woodward Brothers could remove their drill; cannot cross Amargosa Creek due to flow
#30	05/22/11	05/26/11	5	Mat placement to protect drainage pipes along access road at Parkwood Drive
#31	06/08/11	06/09/11	8	Additional access at the 605 Shoofly
#32	05/23/11	06/06/11	5	Use of spur road near Tower 26
#33	06/07/11	06/09/11	5	Extended original TEWS for spur road near Tower 54
#34	06/13/11	06/14/11	11	Additional parking outside of San Gabriel Yard
#35	06/28/11	06/28/11	5	Additional staging near Tower 44

TEWS Request	Date Requested	Date Approved	Segment	Description
#36	07/08/11	07/11/11	5	Additional staging area near Tower 51
#37	07/20/11	07/20/11	8	Additional access at Rooks Road
#38	07/20/11	07/20/11	8	Additional stage area at M60-T1
#39	07/27/11	07/27/11	8	Additional staging and turnaround between M54-T1 and M54-T2
#40	08/01/11	08/01/11	5	Use of spur road for additional parking and staging near Tower 52.
#41	08/08/11	08/12/11	5	Use of disturbed area for parking and equipment staging near Tower 30.
#42	08/10/11	08/10/11	8	New access to Tower MA1-T3
#43	08/12/11	08/12/11	8	Additional guard pole site on Fullerton Road
#44	08/12/11	08/12/11	11	Extra space at guard pole site on Del Mar Avenue
#45	08/12/11	08/12/11	8	Access to distribution poles along Archibald Avenue
#46	08/08/11	08/12/11	5	Use of disturbed area for parking and staging of equipment and vehicles.
#47	08/18/11	08/18/11	8	Additional parking at M64-T4
#48	08/19/11	08/19/11	11	Overland access to Tower M14-6
#49	10/13/11	10/13/11	8	Contractor yard, turning area and staging for 66 kV underground work in Ayala Park.
#50	11/07/11	11/14/11	5	Use of three existing spur roads for additional parking near Tower 68
#51	11/22/11	11/22/11	8	Use of an existing, paved road for additional access on Segment 8, Phase 3.
#52	12/29/11	12/29/11	8	Additional access roads within Rose Hills cemetery.
#53	01/04/11	01/04/11	7	Additional parking and staging area within Legg Lake.
#54	01/11/12	01/18/12	5	Additional parking and staging area near CT 48.
#55	01/18/12	01/18/12	5	Additional parking and staging area near CT 56.
#56	01/23/12	01/27/12	5	Additional parking and staging area near CT 42.
#57	01/30/12	01/30/12	8	Additional parking and staging area on Running Branch Road near M55-T1.
#58	01/30/12	01/30/12	8	Additional access road within Tonner Canyon.
#59	02/02/12	02/03/12	8	Additional parking and staging off of Frame Avenue.
#60	02/10/12	02/16/12	7	Extension of a wire setup site on Segment 7
#61	02/22/12	02/22/12	7	Road to access a wire setup site on Segment 7
#62	02/27/12	02/27/12	11	Access road at Goodrich substation.
#63	02/29/12	02/29/12	5	Access road to tower M18-5
#64	10/07/12	10/10/12	5	Edison Rd SE of Godde Hill RD.
#65	10/08/12	10/10/12	5	Distribution access road off of guard pole access road south of Godde Hill
#66	10/07/12	10/16/12	5	Shoulder of Elizabeth Lake Road.

TEWS Request	Date Requested	Date Approved	Segment	Description
#67	10/11/12	10/16/12	5	Shoulder of Elizabeth Lake Road.
#68	10/19/12	10/23/12	5	Additional access to M18-T5.
#69	11/30/12	12/02/12	5	Access Road to M111-T1 near Construct 60
#70	11/30/12	12/02/12	5	Access Road to M112-T1 near Construct 63
#71	11/30/12	12/03/12	5	Additional Parking area in vacant lot at Mountain Springs Road and Sierra Highway
#72	01/15/13	01/16/13	7	Installation of caution tape within Whittier Narrows Park to exclude the public from wire stringing areas.
#73	01/18/13	Unable to process as TEWS	8	Landing area for skywrap installation, could not approve as TEWS because location was within designated critical habitat for coastal California gnatcatcher.
#74	06/13/13	06/14/13	8	Overland travel access to a splice site in Segment 8 Phase 3.
#75	06/28/13	07/01/13	8	Additional 200 by 200 foot area for splicing associated with TEWS #74.
#76	07/01/13	07/01/13	8	Use of paved/graveled road between Mira Loma Yard and Substation.
#77	07/31/13	08/01/13	8	Crew access to adjacent tower to install grounds.
#78	08/01/13	08/05/13	6A	Utilize dirt access road for wire pulling activities.
#79	08/08/13	08/08/13	8	Extra workspace to access Tower M1-T5.
#80	08/13/13	08/13/13	11	Additional access to Yard 58.
#81	08/16/13	08/17/13	11	Additional parking area at Pasadena College parking lot.
#81	09/05/13	09/05/13	11	Extra space for guard structure set up, Eaton Dam.
#82	09/10/13	09/13/13	8	Access to existing manhole in Chino.
#83	09/10/13	09/13/13	8	Extra work space east of M2-T5, Segment 8 Phase 3.
#84	10/03/13	10/03/13	8	Use of disturbed area for extra work space near M60-T1 in Chino Hills.
#85	01/28/14	02/11/14	11	Use of existing road to access Construct 3.
#86	02/21/14	02/24/14	7	Use of additional space for wire set up site near M37-T3.
#87	05/02/14	05/02/14	7	Use of existing access road to M29-T4.
#88	05/27/14	05/28/14	8	Use of an existing access road to M70-T3.
#89	05/29/14	05/30/14	8	Use of an existing access road to M73-T3.
#90	05/30/14	05/30/14	7	Use of extra work space for guard structures.
#91	05/30/14	06/01/14	7	Use of two existing roads for traffic control during stringing operations.
#92	06/06/14	06/06/14	8	Guard pole and access road work area expansion.
#93	06/19/14	06/19/14	7	Landing zone at M34-T4.
#94	06/20/14	06/20/14	8	Use of existing access road at M70-T1.
#92	07/14/14	07/17/14	7	Use of paved parking lot for wire set up site expansion.

TEWS Request	Date Requested	Date Approved	Segment	Description
#93	07/23/14	07/24/14	7	Use of parking area within nursery near Royal Oaks Drive for wire stringing equipment.
#94	08/29/14	09/04/14	7	Use of a parking lot as a guard pole site, south of 60 freeway.
#95	08/29/14	09/03/14	8	Expanded access to Tower M71-T5, Phase 3.
#96	08/29/14	09/04/14	7	Use of paved area within storage facility for guard pole site.
#97	09/12/14	09/12/14	7	Use of existing access road near Legg Lake.
#98	09/17/14	SCE to resubmit.	8	Use of previously approved work area for Helicopter landing.
#99	09/19/14	09/23/14		Extension of WSS 7.59a.
#100	09/25/14	09/25/14	8	Use of access road to WSS 8-3.12.
#101	10/01/14	Denied	7	Use of parking lot adjacent to designated critical habitat for helicopter landing.
#102	10/03/14	10/07/14	8	Use of additional area near WSS 8.3-6b.
#103	10/08/14	10/21/14	8	Use of additional area near WSS 8-3.18.
#104	10/10/14	10/10/14	7	Additional area for wire stringing site near M43-T2.
#105	10/21/14	10/21/14	8	Use of 66 kV work area as LZ.
#106	10/22/14	10/27/14	8	Use of previously approved staging area as LZ.
#107	10/27/14	10/27/14	8, 500 kV UG	Temporary waterline placement along Eucalyptus Ave.

NON-COMPLIANCES & INCIDENTS

Table 4 provides a summary of CPUC Non-Compliance Reports and Project Memorandums.

TABLE 4
CPUC NON-COMPLIANCE REPORTS & PROJECT MEMORANDA
(Updated 03/18/15)

Type	Date	Location	Description
NON-COMPLIANCE REPORTS & PROJECT MEMORANDA, SEGMENTS 1-3			
<i>For CPUC Non-Compliance Reports & Project Memoranda activity on Segments 1-3 prior to 2010, please see Table 4 in Weekly Reports 106, 107.</i>			
NON-COMPLIANCE REPORTS & PROJECT MEMORANDA, SEGMENTS 1-11 (January 2010 thru the present)			
CPUC Non-Compliance Reports (NCR):			
NCR #1	Issued 02/24/11 Withdrawn 03/24/11	Project-wide	No notification of wildlife entrapment/mortality from bird deterrent netting.
NCR #2	09/13/11	Segment 7 66 kV	TRTP construction activity occurring in the San Gabriel Junction area prior to the installation of exclusionary staking for sensitive resource areas and without resource monitoring

Type	Date	Location	Description
NCR #3	08/15/12	Segment 8, Phase 4	Paleontological (paleo) monitoring not in compliance with PRMP.
NCR #4	03/07/14	Segments 6 and 11 off ANF	Failure to correct SWPPP items outlined in Project Memo #10, BMP failure resulting in multiple discharges off project sites.
NCR #5	07/18/14	Segment 8	Staging TRTP materials and equipment outside of approved work areas in Tonner Canyon.
CPUC Project Memoranda (PM)			
PM #1	04/27/10	Segment 3A	Delivery of equipment to Tower 43 within an ESA without monitors present
PM #2	06/23/10	Segment 8 West CY	Vegetation clearing without preconstruction biological or clearance surveys within TRTP right-of-way
PM #3	02/16/11	Project-wide	No notification provided on 10 separate Level 0 incidences
PM #4	02/16/11	Segment 7	Construction crews entered area prior to sweep being field validated by CPUC EM
PM #5	09/07/11	Segment 7	Use of unapproved area for staging material near Greenwood and Saturn Ave, Monterey Park
PM #6	12/09/11	Segment 7 66 kV	Use of unapproved areas for soil disposal
PM #7	Issued 12/09/11 Retracted 02/03/12	Segment 5	Non-reporting of special status species found during focused surveys in areas under construction
PM #8	04/20/12	Segment 7	Encroachment on a red-tailed hawk buffer by spacer cart.
PM #9	03/14/13	Segment 6	Track-out at Vincent Material Yard and Loop Road L.
PM #10	11/05/13	Segment 6	Outstanding SWPPP repairs on Segment 6.
PM #11	01/20/14	Segment 6	Equipment staging outside of approved work areas.
PM #12	02/27/14	4-11	Incident Reporting for TRTP.
PM #13	01/15/15	500 kV Underground	Failure to install wildlife escape ramps at WTS.
PM#14	01/15/15	500 kV Underground	Insufficient equipment washout, unprotected storm drain inlet, and uncovered stockpile during rain.

PROJECT PHOTOGRAPHS



Figure 1: Container planting occurring at Chaney Trails' restoration area, Segment 11B.



Figure 2: Wire stringing operations at Construct 67 and Gould Substation, Segment 11C.



Figure 3: Hydroseeding for restoration and erosion control, Segment 8, Phase 4.



Figure 4: Water breaching the impermeable barrier at VC #2, 500 kV Underground.

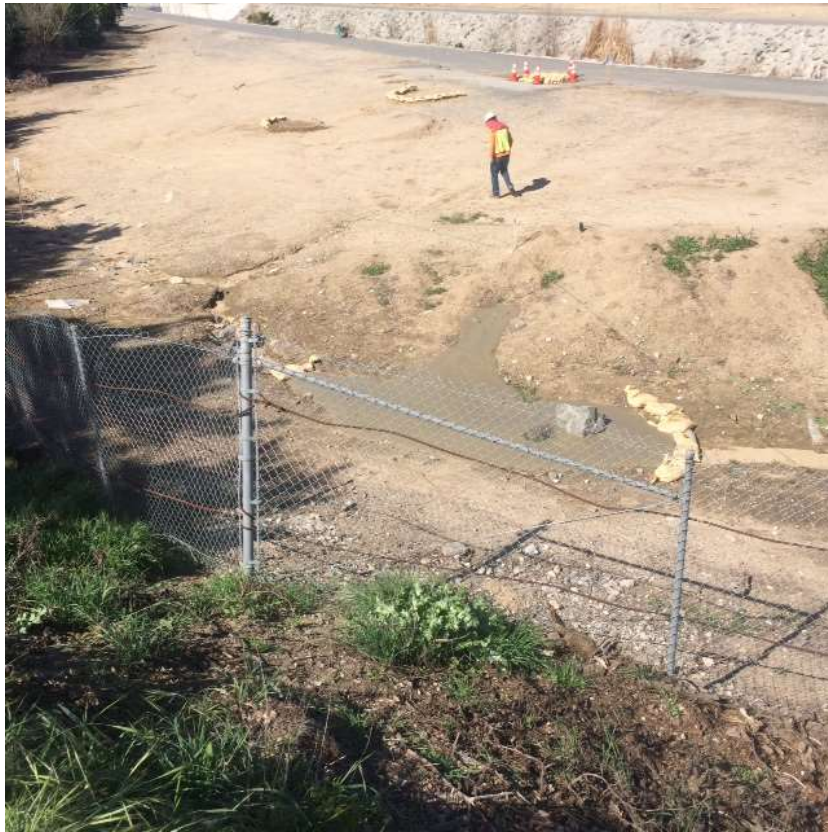


Figure 5: 150-gallon frac-out identified adjacent to the Carbon Canyon Creek Channel during HDD operations, 500 kV Underground (photo courtesy of SCE).



Figure 6: Air quality monitor taking surface measurements during contaminated soil removal at ETS, 500 kV Underground.



Figure 7: Offsite discharge occurred at WTS as a result of the March 2 storm generating flows that breached the silt fencing control measures, 500 kV Underground (photo courtesy of SCE).



Figure 8: Discharge observed within the jurisdictional feature adjacent to WTS, 500 kV Underground (photo courtesy of SCE).



Figure 9: Storm water flowing over sandbag BMPs along Canon Avenue during March 2 storm, 500 kV Underground.



Figure 10: Muddy discharge flowing down Madrid Street from the entrance to VC #6 during March 2 storm, 500 kV Underground.