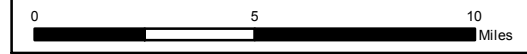


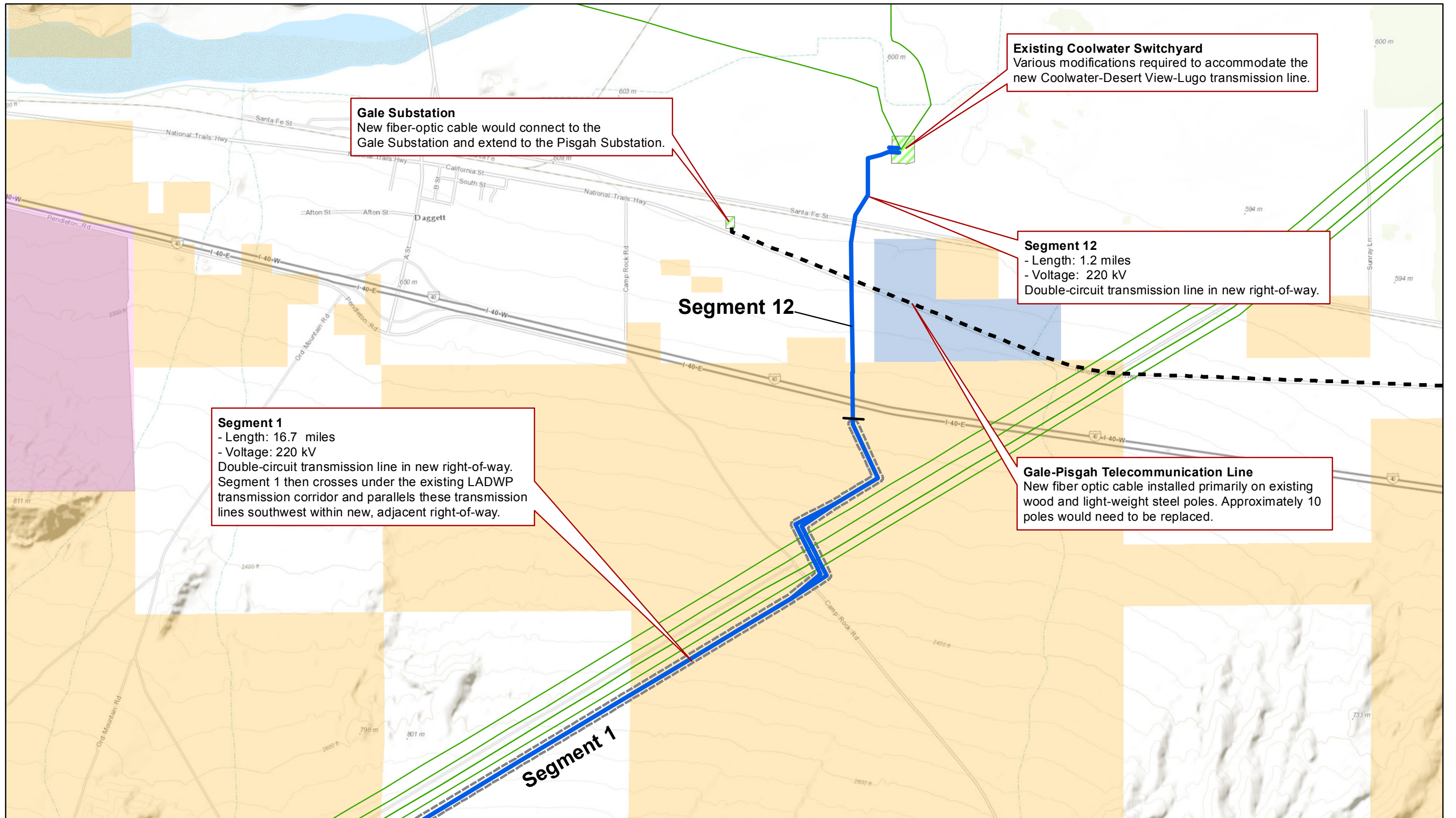
- Legend**
- Substations
 - Desert View Substations

- CLTP Proposed Route**
- 220 kV
 - 500 kV
 - Telecommunication Lines

- Public Lands**
- Bureau of Land Management
 - Forest Service
 - Local Government
 - Military
 - National Park Service
 - State
 - Unclassified



Preliminary CLTP Overview



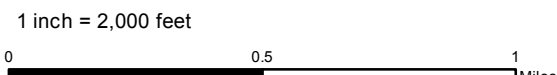
Gale Substation
 New fiber-optic cable would connect to the Gale Substation and extend to the Pisgah Substation.

Existing Coolwater Switchyard
 Various modifications required to accommodate the new Coolwater-Desert View-Lugo transmission line.

Segment 12
 - Length: 1.2 miles
 - Voltage: 220 kV
 Double-circuit transmission line in new right-of-way.

Segment 1
 - Length: 16.7 miles
 - Voltage: 220 kV
 Double-circuit transmission line in new right-of-way. Segment 1 then crosses under the existing LADWP transmission corridor and parallels these transmission lines southwest within new, adjacent right-of-way.

Gale-Pisgah Telecommunication Line
 New fiber optic cable installed primarily on existing wood and light-weight steel poles. Approximately 10 poles would need to be replaced.



Sources: SCE 2014, BLM 2012, PLATTS 2013, Aspen 2013

Legend

- Substation Footprint
- Desert View Substation
- City Boundaries
- CLTP Proposed Route 220 kV
- CLTP Proposed Route 500 kV
- Proposed ROW
- Existing ROW

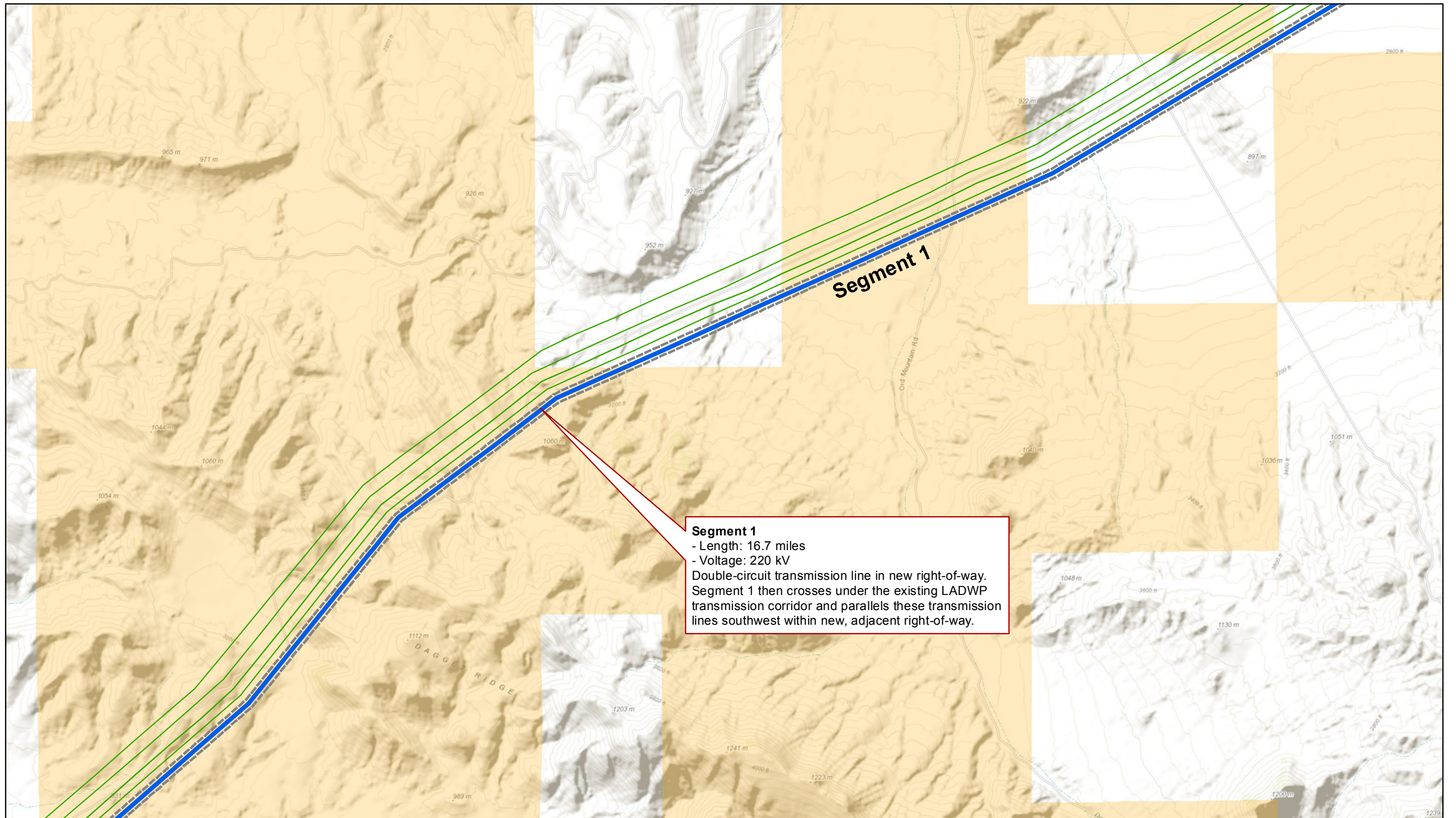
- Telecommunication Lines
- Existing Transmission Lines

Public Lands

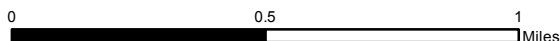
- Bureau of Land Management
- Forest Service
- Local Government
- Military
- National Park Service
- State
- Unclassified

Preliminary Segment Details

Map 1



1 inch = 2,000 feet



Sources: SCE 2014, BLM 2012, PLATTS 2013, Aspen 2013

Legend

- Substation Footprint
- Desert View Substation
- City Boundaries

CLTP Proposed Route

- 220 kV
- 500 kV
- Proposed ROW
- Existing ROW

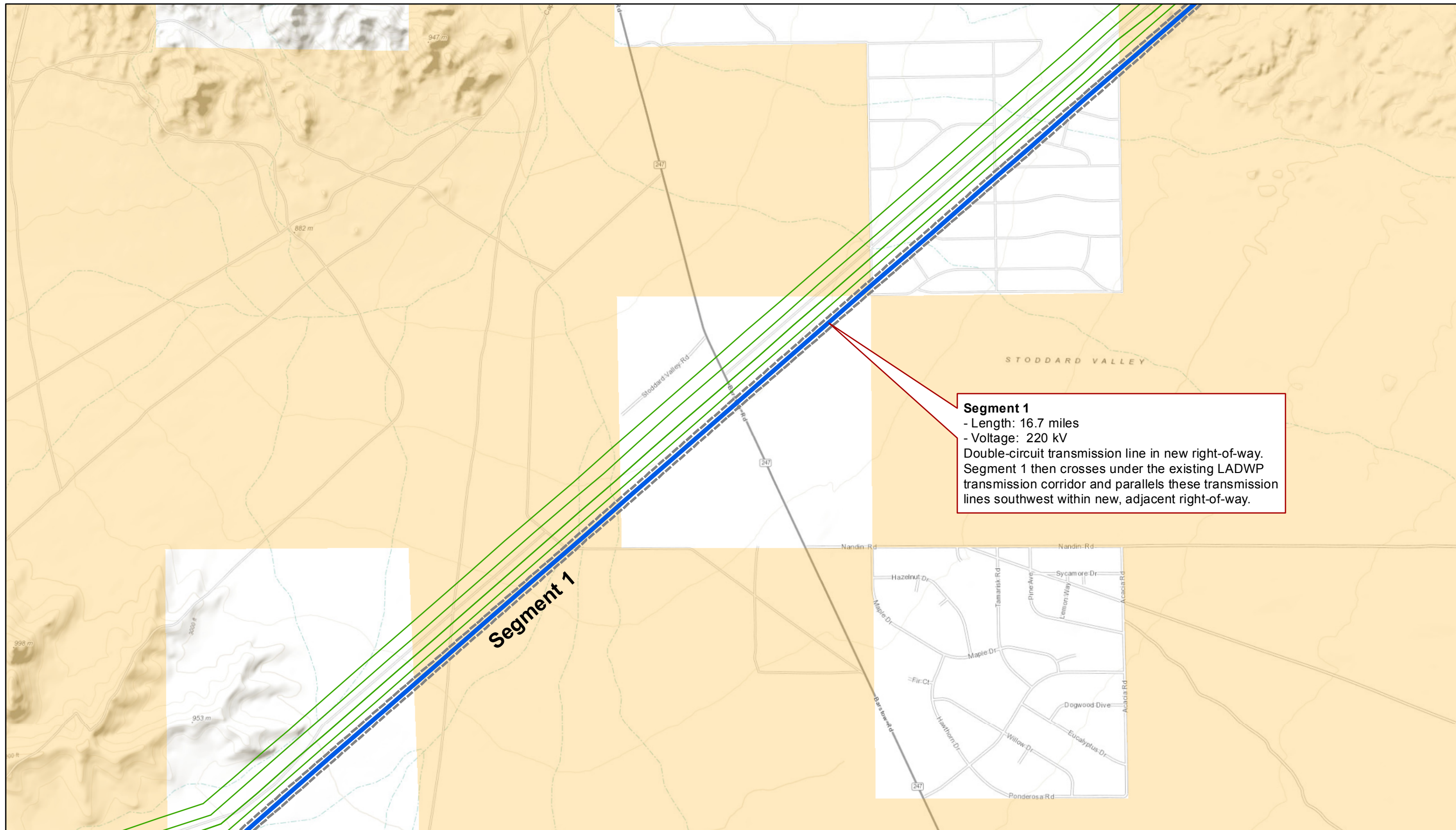
- Telecommunication Lines
- Existing Transmission Lines

Public Lands

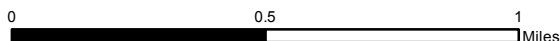
- Bureau of Land Management
- Forest Service
- Local Government
- Military
- National Park Service
- State
- Unclassified

Preliminary Segment Details

Map 2



1 inch = 2,000 feet



Sources: SCE 2014, BLM 2012, PLATTS 2013, Aspen 2013

Legend

- Substation Footprint
- Desert View Substation
- City Boundaries

CLTP Proposed Route

- 220 kV
- 500 kV
- Proposed ROW
- Existing ROW

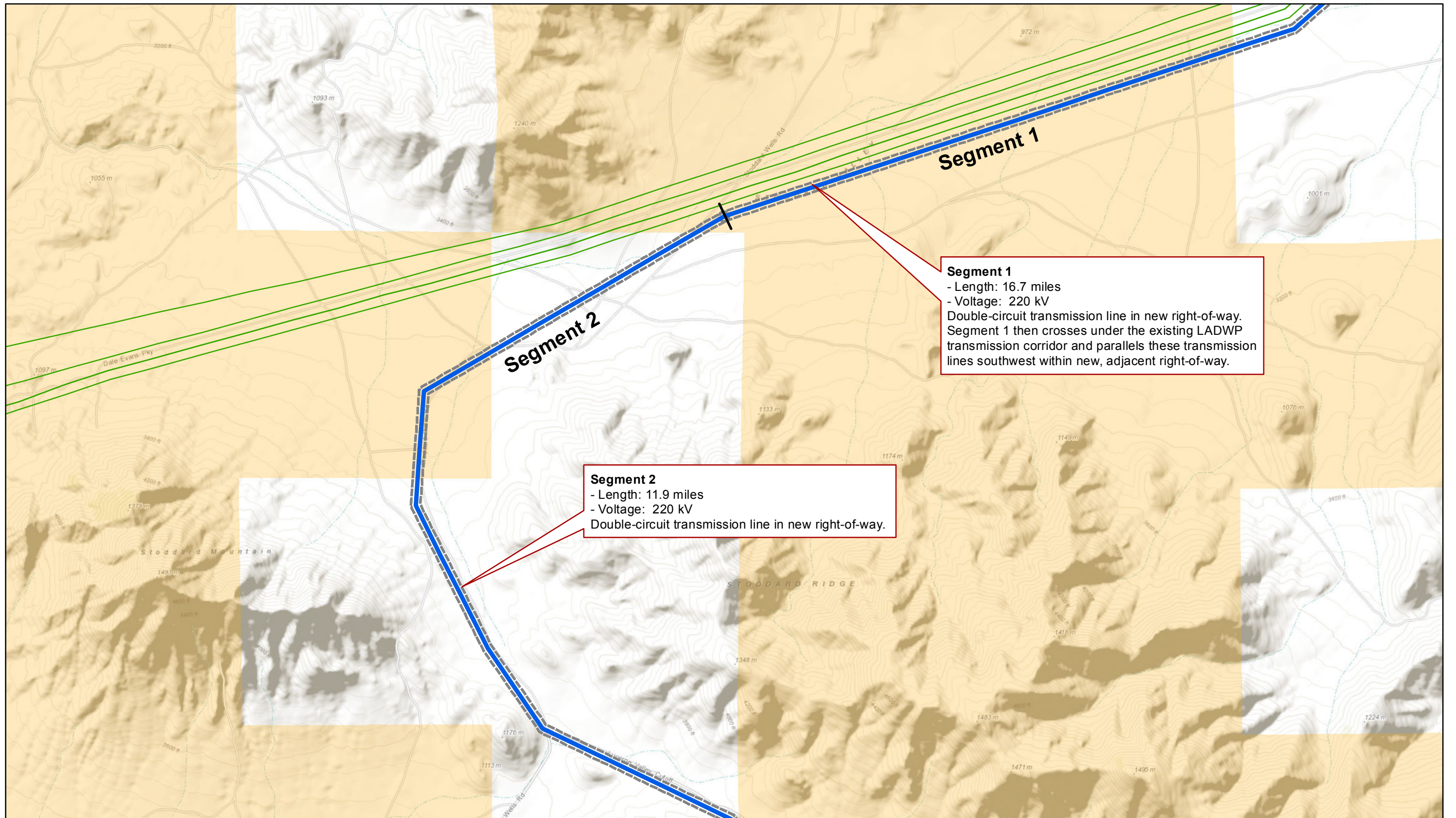
- Telecommunication Lines
- Existing Transmission Lines

Public Lands

- Bureau of Land Management
- Forest Service
- Local Government
- Military
- National Park Service
- State
- Unclassified

Preliminary Segment Details

Map 3

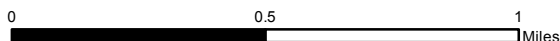


Segment 1
 - Length: 16.7 miles
 - Voltage: 220 kV
 Double-circuit transmission line in new right-of-way. Segment 1 then crosses under the existing LADWP transmission corridor and parallels these transmission lines southwest within new, adjacent right-of-way.

Segment 2
 - Length: 11.9 miles
 - Voltage: 220 kV
 Double-circuit transmission line in new right-of-way.



1 inch = 2,000 feet



Sources: SCE 2014, BLM 2012, PLATTS 2013, Aspen 2013

Legend

- Substation Footprint
- Desert View Substation
- City Boundaries

CLTP Proposed Route

- 220 kV
- 500 kV
- Proposed ROW
- Existing ROW

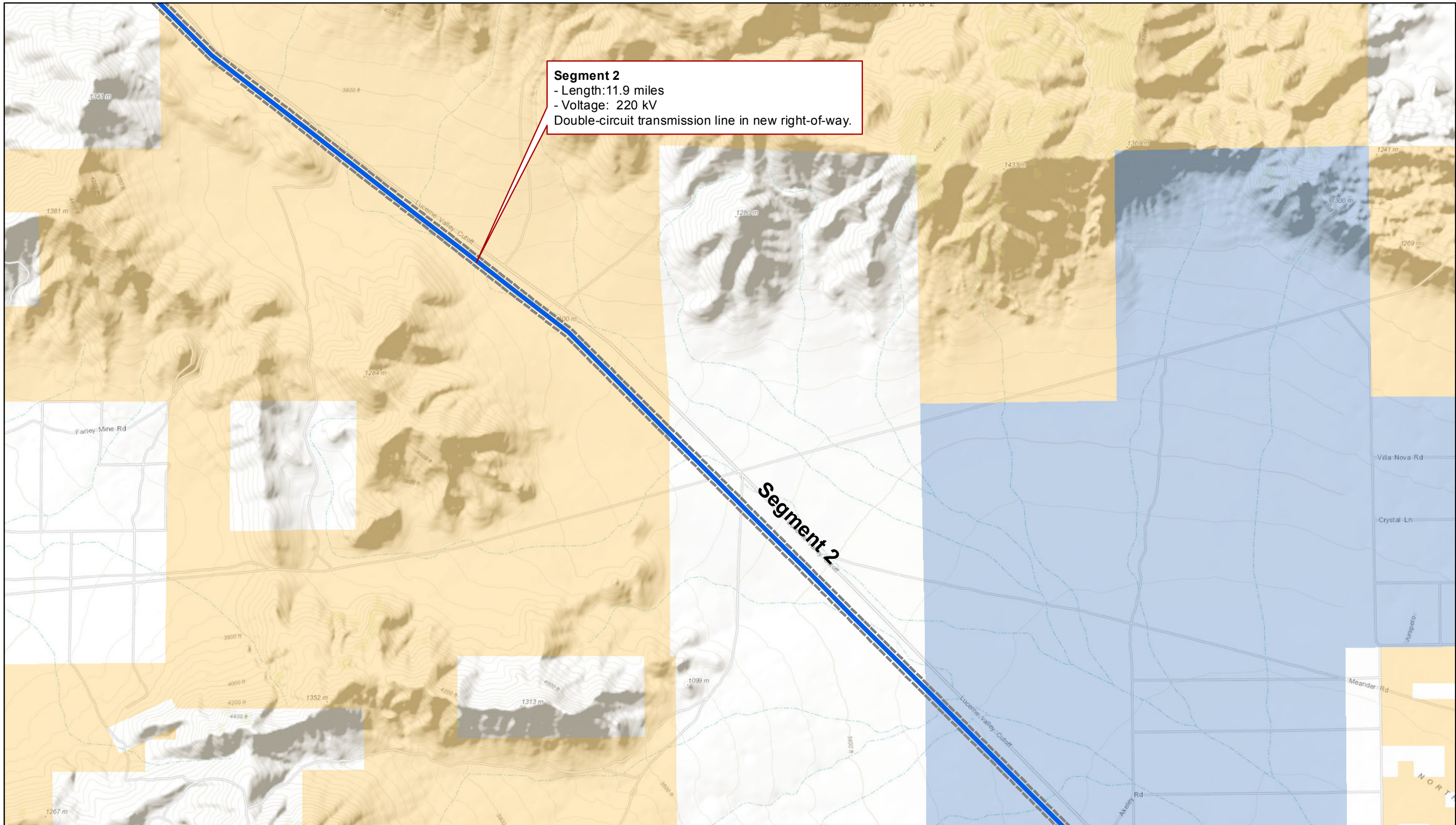
- Telecommunication Lines
- Existing Transmission Lines

Public Lands

- Bureau of Land Management
- Forest Service
- Local Government
- Military
- National Park Service
- State
- Unclassified

Preliminary Segment Details

Map 4



Segment 2
 - Length: 11.9 miles
 - Voltage: 220 kV
 Double-circuit transmission line in new right-of-way.

Segment 2



Sources: SCE 2014, BLM 2012, PLATTS 2013, Aspen 2013

Legend

- Substation Footprint
- Desert View Substation
- City Boundaries

CLTP Proposed Route

- 220 kV
- 500 kV
- Proposed ROW
- Existing ROW

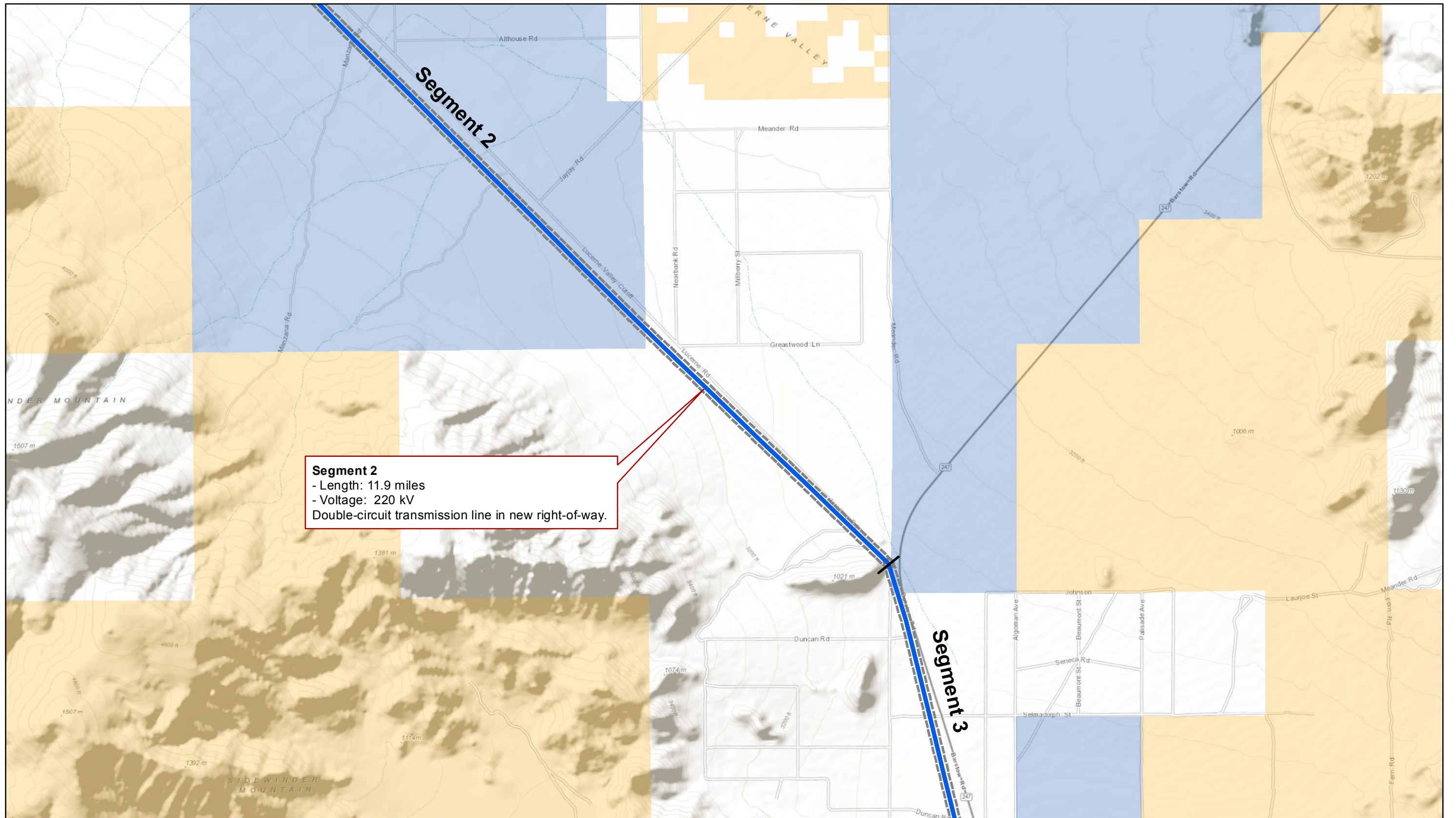
- Telecommunication Lines
- Existing Transmission Lines

Public Lands

- Bureau of Land Management
- Forest Service
- Local Government
- Military
- National Park Service
- State
- Unclassified

Preliminary Segment Details

Map 5



Segment 2
 - Length: 11.9 miles
 - Voltage: 220 kV
 Double-circuit transmission line in new right-of-way.



Sources: SCE 2014, BLM 2012, PLATTS 2013, Aspen 2013

Legend

- Substation Footprint
- Desert View Substation
- City Boundaries
- CLTP Proposed Route 220 kV
- CLTP Proposed Route 500 kV
- Proposed ROW
- Existing ROW

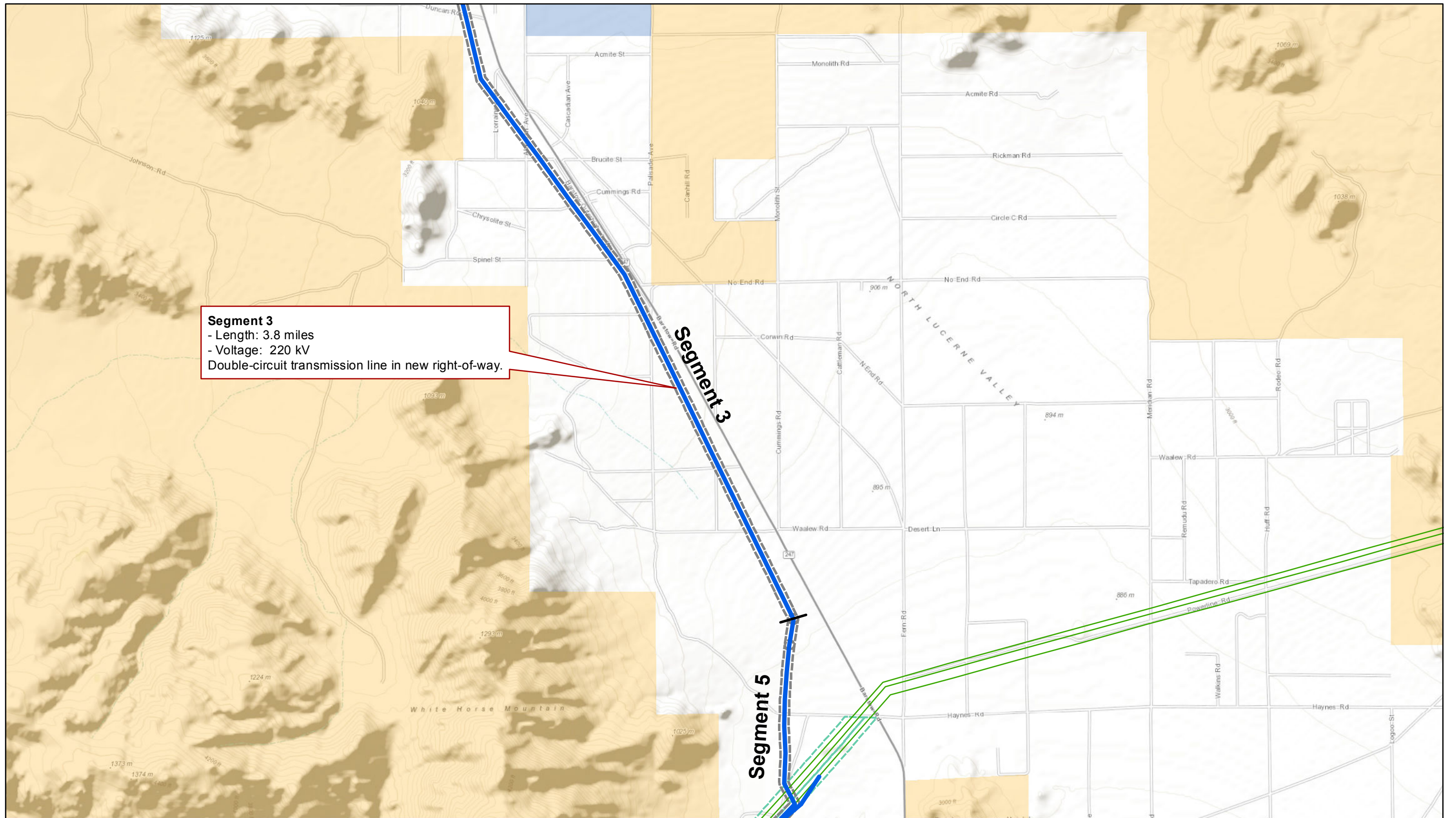
- Telecommunication Lines
- Existing Transmission Lines

Public Lands

- Bureau of Land Management
- Forest Service
- Local Government
- Military
- National Park Service
- State
- Unclassified

Preliminary Segment Details

Map 6



Segment 3
 - Length: 3.8 miles
 - Voltage: 220 kV
 Double-circuit transmission line in new right-of-way.

Segment 3

Segment 5



Sources: SCE 2014, BLM 2012, PLATTS 2013, Aspen 2013

Legend

- Substation Footprint
- Desert View Substation
- City Boundaries
- CLTP Proposed Route 220 kV
- CLTP Proposed Route 500 kV
- Proposed ROW
- Existing ROW

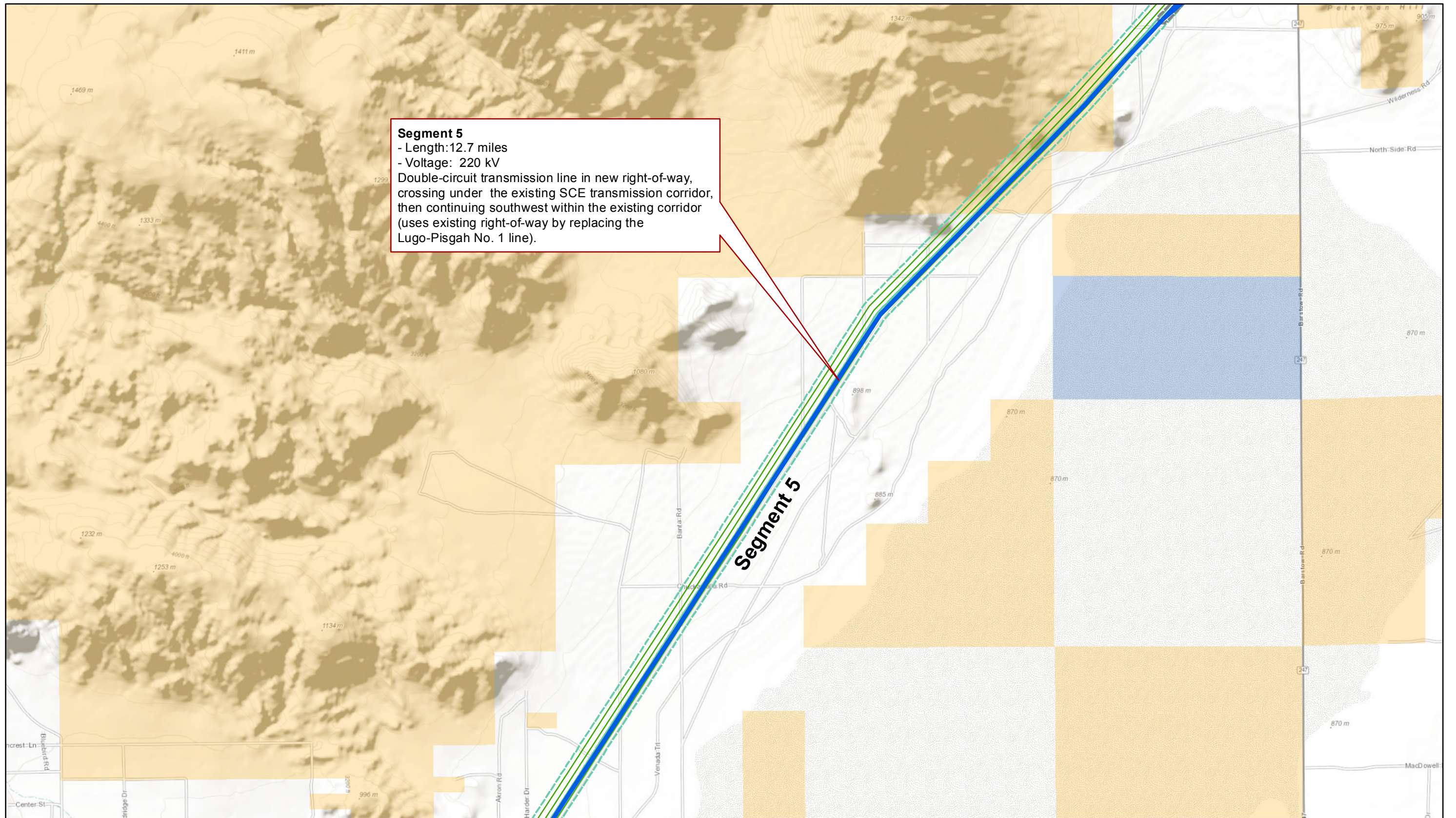
- Telecommunication Lines
- Existing Transmission Lines

Public Lands

- Bureau of Land Management
- Forest Service
- Local Government
- Military
- National Park Service
- State
- Unclassified

Preliminary Segment Details

Map 7

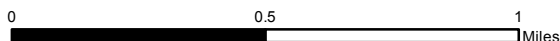


Segment 5
 - Length: 12.7 miles
 - Voltage: 220 kV
 Double-circuit transmission line in new right-of-way, crossing under the existing SCE transmission corridor, then continuing southwest within the existing corridor (uses existing right-of-way by replacing the Lugo-Pisgah No. 1 line).

Segment 5



1 inch = 2,000 feet



Sources: SCE 2014, BLM 2012, PLATTS 2013, Aspen 2013

Legend

- Substation Footprint
- Desert View Substation
- City Boundaries

CLTP Proposed Route

- 220 kV
- 500 kV
- Proposed ROW
- Existing ROW

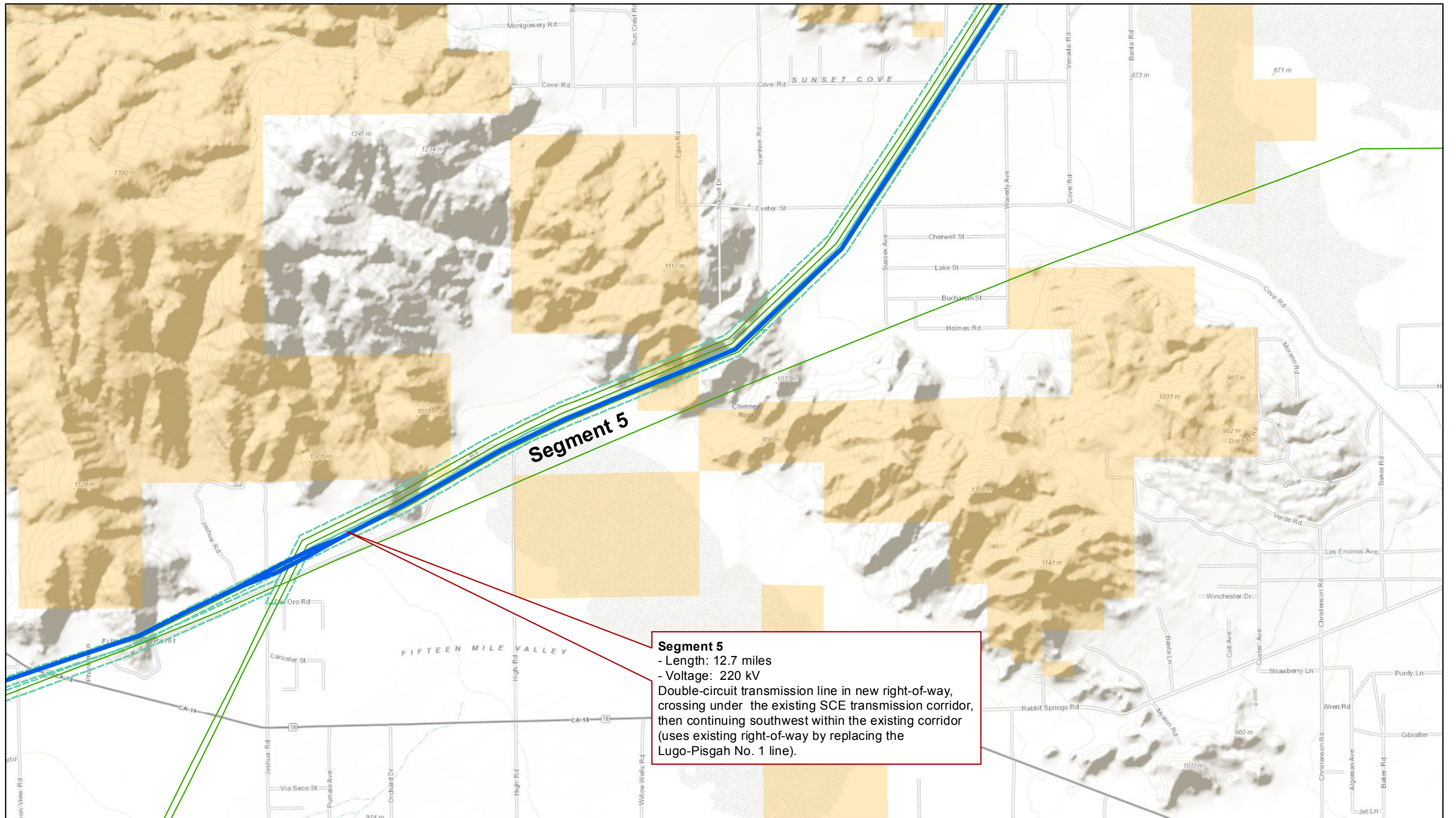
- Telecommunication Lines
- Existing Transmission Lines

Public Lands

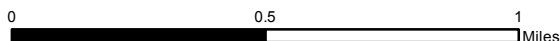
- Bureau of Land Management
- Forest Service
- Local Government
- Military
- National Park Service
- State
- Unclassified

Preliminary Segment Details

Map 8



1 inch = 2,000 feet



Sources: SCE 2014, BLM 2012, PLATTS 2013, Aspen 2013

Legend

- Substation Footprint
- Desert View Substation
- City Boundaries

CLTP Proposed Route

- 220 kV
- 500 kV
- Proposed ROW
- Existing ROW

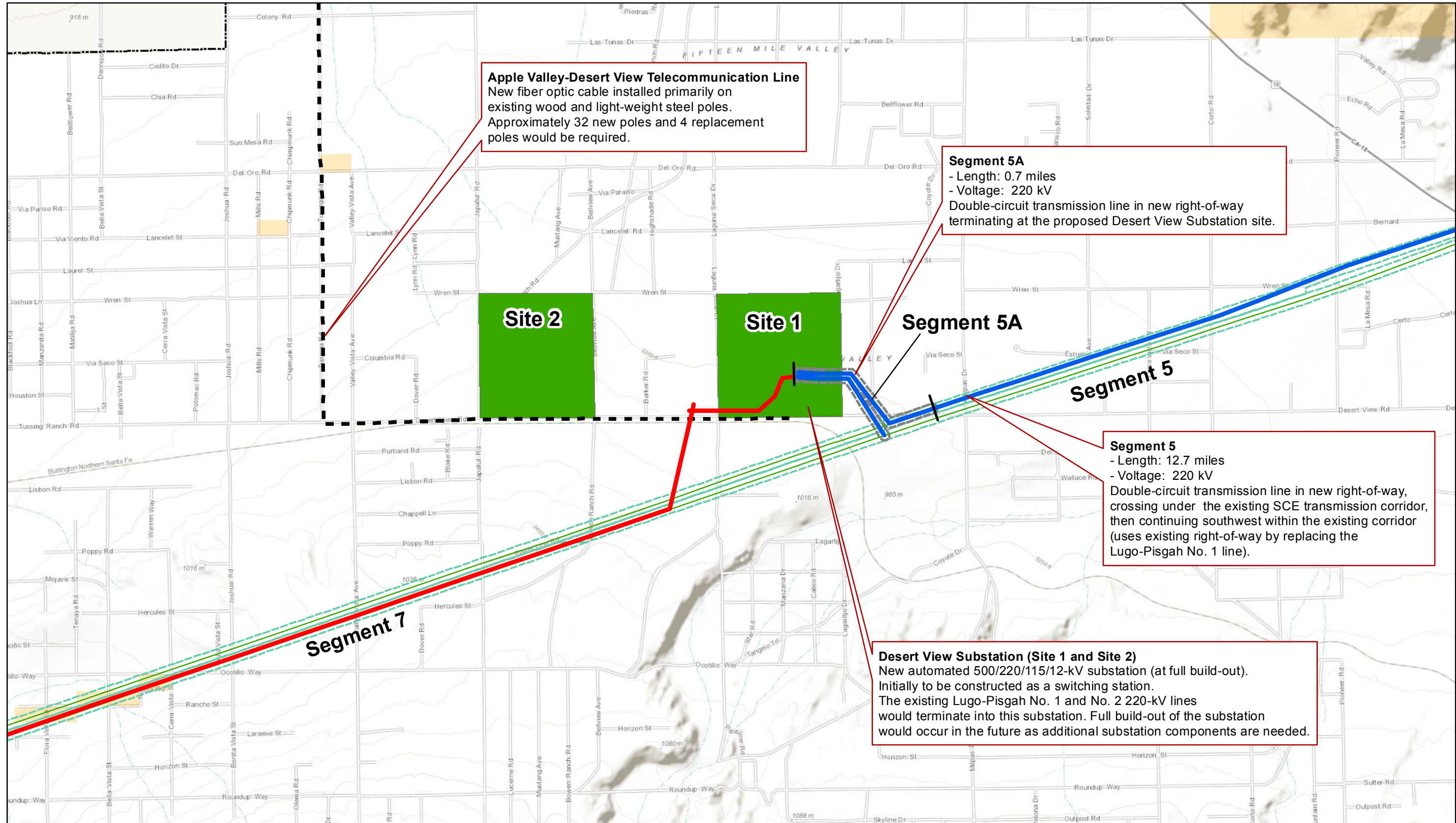
- Telecommunication Lines
- Existing Transmission Lines

Public Lands

- Bureau of Land Management
- Forest Service
- Local Government
- Military
- National Park Service
- State
- Unclassified

Preliminary Segment Details

Map 9

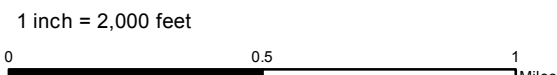


Apple Valley-Desert View Telecommunication Line
 New fiber optic cable installed primarily on existing wood and light-weight steel poles. Approximately 32 new poles and 4 replacement poles would be required.

Segment 5A
 - Length: 0.7 miles
 - Voltage: 220 kV
 Double-circuit transmission line in new right-of-way terminating at the proposed Desert View Substation site.

Segment 5
 - Length: 12.7 miles
 - Voltage: 220 kV
 Double-circuit transmission line in new right-of-way, crossing under the existing SCE transmission corridor, then continuing southwest within the existing corridor (uses existing right-of-way by replacing the Lugo-Pisgah No. 1 line).

Desert View Substation (Site 1 and Site 2)
 New automated 500/220/115/12-kV substation (at full build-out). Initially to be constructed as a switching station. The existing Lugo-Pisgah No. 1 and No. 2 220-kV lines would terminate into this substation. Full build-out of the substation would occur in the future as additional substation components are needed.



Sources: SCE 2014, BLM 2012, PLATTS 2013, Aspen 2013

Legend

- Substation Footprint
- Desert View Substation
- City Boundaries

CLTP Proposed Route

- 220 kV
- 500 kV
- Proposed ROW
- Existing ROW

- Telecommunication Lines
- Existing Transmission Lines

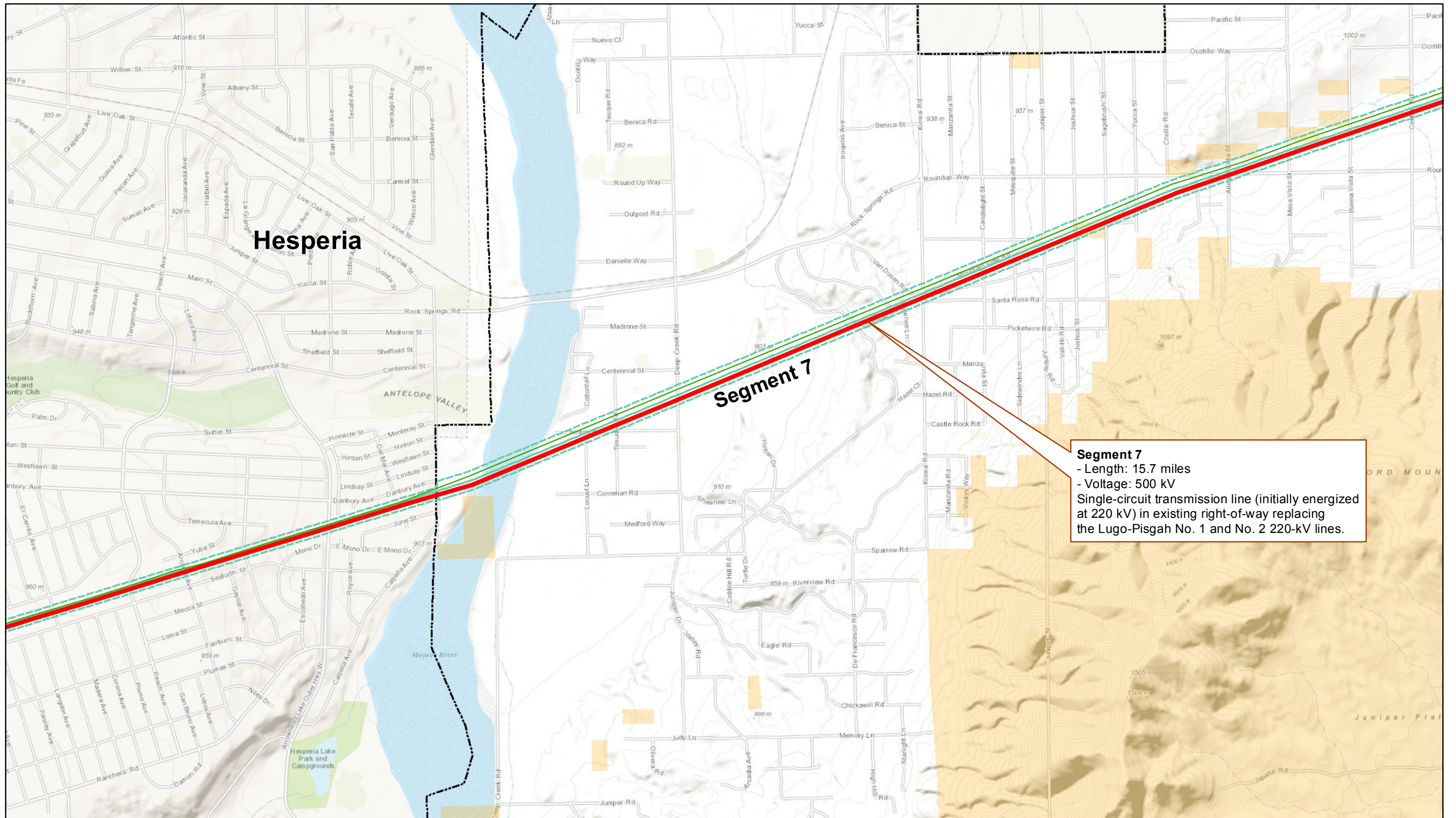
Public Lands

- Bureau of Land Management
- Forest Service
- Local Government
- Military
- National Park Service
- State
- Unclassified

Preliminary Segment Details

Map 10

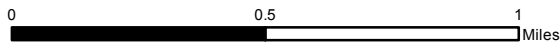
Map 10 of 12



Segment 7
 - Length: 15.7 miles
 - Voltage: 500 kV
 Single-circuit transmission line (initially energized at 220 kV) in existing right-of-way replacing the Lugo-Pisgah No. 1 and No. 2 220-kV lines.



1 inch = 2,000 feet



Sources: SCE 2014, BLM 2012, PLATTS 2013, Aspen 2013

Legend

- Substation Footprint
- Desert View Substation
- City Boundaries

CLTP Proposed Route

- 220 kV
- 500 kV
- Proposed ROW
- Existing ROW

- Telecommunication Lines
- Existing Transmission Lines

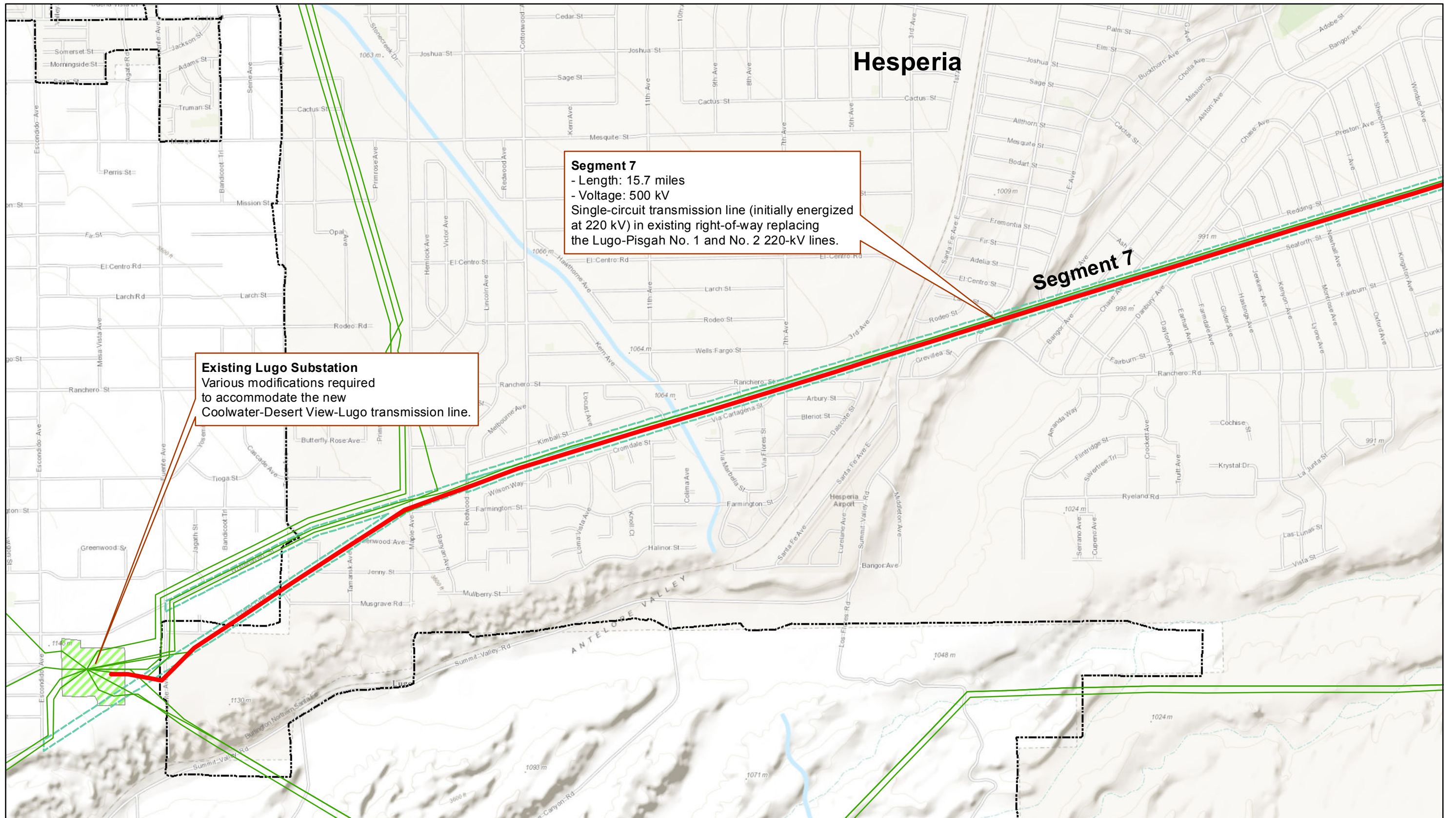
Public Lands

- Bureau of Land Management
- Forest Service
- Local Government
- Military
- National Park Service
- State
- Unclassified

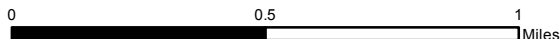
Preliminary Segment Details

Map 11

Map 11 of 12



1 inch = 2,000 feet



Sources: SCE 2014, BLM 2012, PLATTS 2013, Aspen 2013

Legend

- Substation Footprint
- Desert View Substation
- City Boundaries

CLTP Proposed Route

- 220 kV
- 500 kV
- Proposed ROW
- Existing ROW

- Telecommunication Lines
- Existing Transmission Lines

Public Lands

- Bureau of Land Management
- Forest Service
- Local Government
- Military
- National Park Service
- State
- Unclassified

Preliminary Segment Details

Map 12