



EIR/EIS Scoping Meetings

Coolwater-Lugo Transmission Project

Presentation Agenda

- Welcome and Introduction
- CEQA Lead Agency: California Public Utilities Commission
- NEPA Lead Agency: Bureau of Land Management
- Overview of the Proposed Project
- Environmental Review Process
- Public Comments
- Conclusion

Purpose of the Meeting

- To provide information to the public on the proposed project.
- To describe the environmental review process and subsequent decision making.
- To solicit input from the public on environmental issues and concerns, including alternatives and mitigation measures.
- Please note that the agency representatives at the meeting are responsible for the environmental review of the project, but are not responsible for making decisions to approve or deny the proposed project.

Oral Comments

- After the agency presentations, members of the public may provide oral comments on environmental topics.
- To speak, you must first fill out a speaker registration card.
- Speakers will be called to the microphone individually to provide their comments.
- Out of courtesy for others, please limit your comments to no more than three minutes. If you have longer comments, you may come to the microphone a second time after all others have finished their comments.
- Your speaking time may not be allocated to others.

Acronyms

- CPUC: California Public Utilities Commission
- BLM: Bureau of Land Management (Department of Interior)
- CEQA: California Environmental Quality Act
- NEPA: National Environmental Policy Act
- EIR: Environmental Impact Report
- EIS: Environmental Impact Statement
- SCE: Southern California Edison (project applicant)

Key Players

- California Public Utilities Commission
 - Regulates Investor-Owned Utilities in California
 - Responsible for compliance with CEQA
- Bureau of Land Management
 - Administers activities and uses on designated federal lands
 - Responsible for compliance with NEPA and other federal laws
- Southern California Edison
 - Provides electrical service to a large portion of So. California
 - Regulated by the CPUC



California Public Utilities Commission

ENVIRONMENTAL REVIEW PROCESS





What Does the CPUC Regulate?

- Investor-Owned Utilities (IOUs)
 - Electricity
 - Telephone Communication
 - Natural Gas
 - Water Supply
 - Transportation and Rail
- Purpose: To ensure that utility services are provided to the public in a safe and reliable manner for a reasonable price.



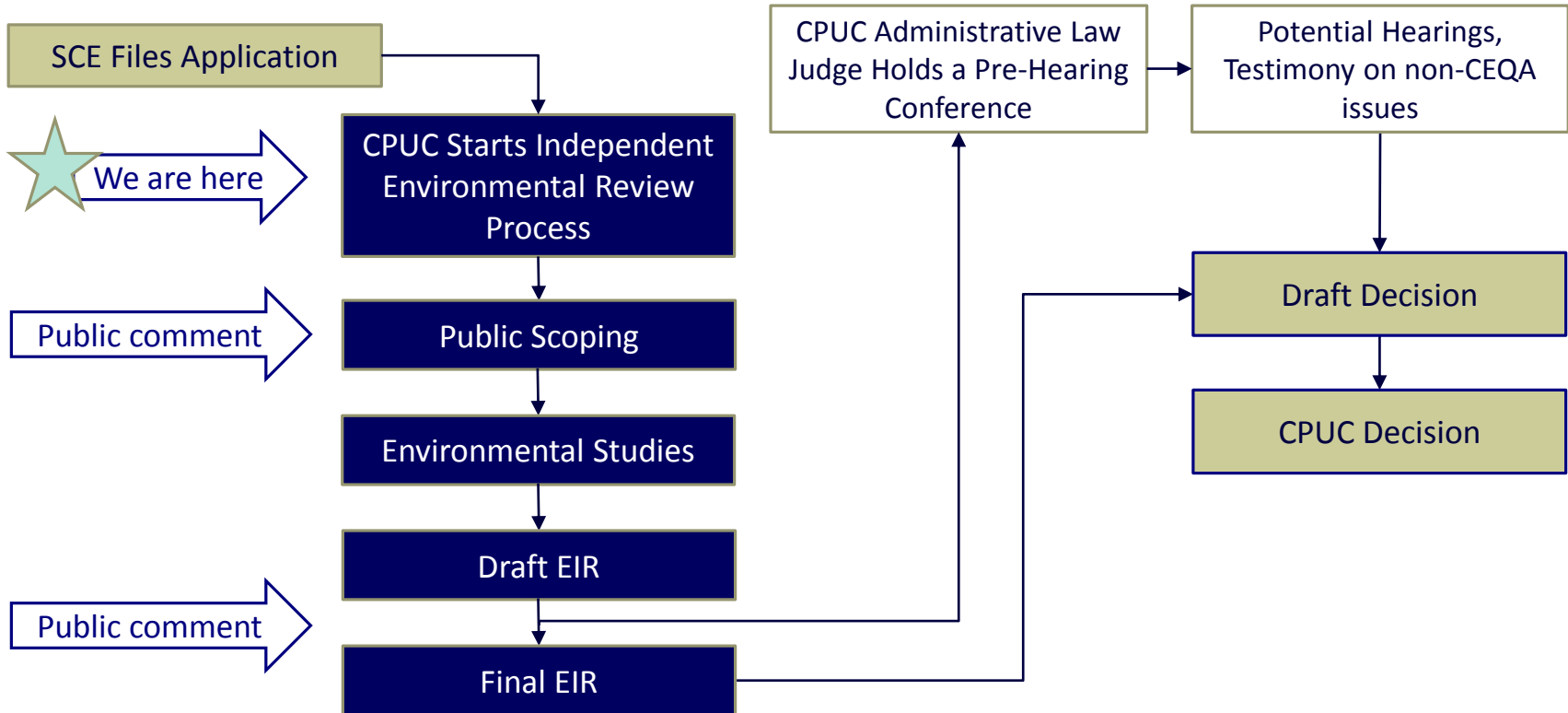
CPUC Process for Project Review

- The CPUC process has two parts:
 - Ratemaking (need, cost, feasibility, and rates)
 - Environmental Review

Today's meeting is about Environmental Review:
Compliance with the California Environmental Quality Act (CEQA)



CPUC Process for Project Review



For Additional Information



www.cpuc.ca.gov

U.S. Bureau of Land Management

ENVIRONMENTAL REVIEW AND DECISION-MAKING PROCESS





BLM's Role

- BLM Authority
 - Administration of public lands under Federal Land Policy and Management Act of 1976 (FLPMA)
 - Lead agency for NEPA, National Historic Preservation Act, and other federal law compliance
 - Administration of the BLM California Desert Conservation Plan (CDCA 1980, as Amended)
 - Review and processing of an EIS for compliance with NEPA, as well as a CDCA Plan Amendment (PA)
 - Issuance of right-of-way grants for use of federal land
 - Lead agency for consultation with the U.S. Fish and Wildlife Service under Section 7 of the Endangered Species Act



BLM Authorized Officer's Role

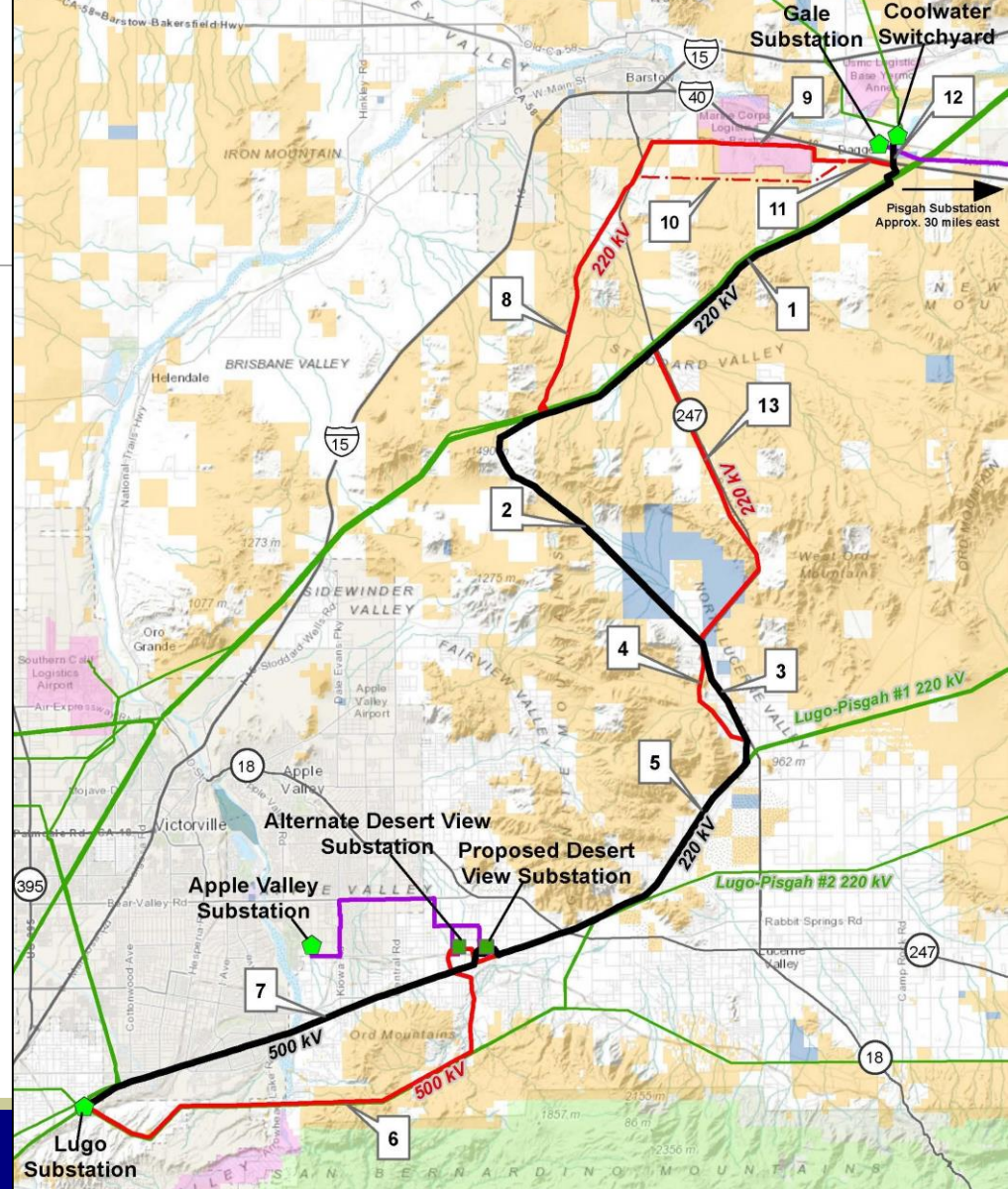
- Initial Response to Proposal
- Pre-application Screening
- Accept Application or Reject Proposal
- Process Application / Land Use Plan Amendment (PA)
 - Conduct Formal Scoping
 - Prepare BLM Planning / NEPA Document (PA/EIS)
 - Conduct Public Comment and Review
 - Finalize BLM Planning / NEPA Document (PA/EIS)
- Approve LUP Amendment / Decision on Application
- Authorize the Use and Establish Monitoring
- Administer Project through Termination of its Right-of-Way

Project Overview

COOLWATER-LUGO TRANSMISSION PROJECT

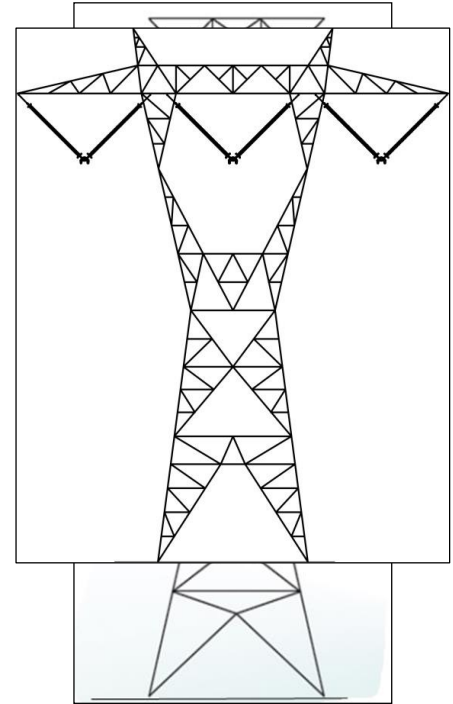
Project Overview

- New high-voltage transmission line extending from the Coolwater Switchyard in Daggett to the Lugo Substation in Hesperia (approx. 64 miles)
- New substation near Apple Valley.
- New telecommunication lines between Apple Valley and Desert View Substations and between Gale and Pisgah Substations.



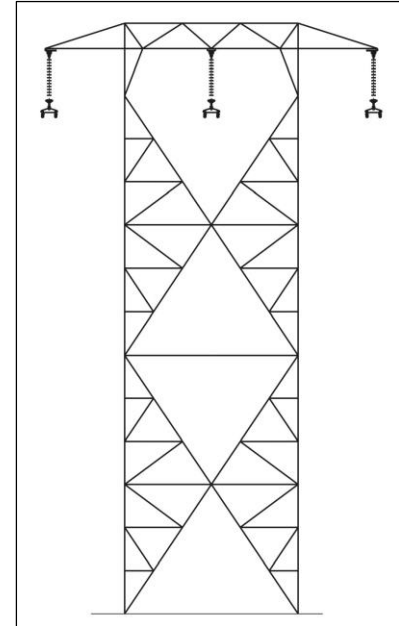
Transmission Structures

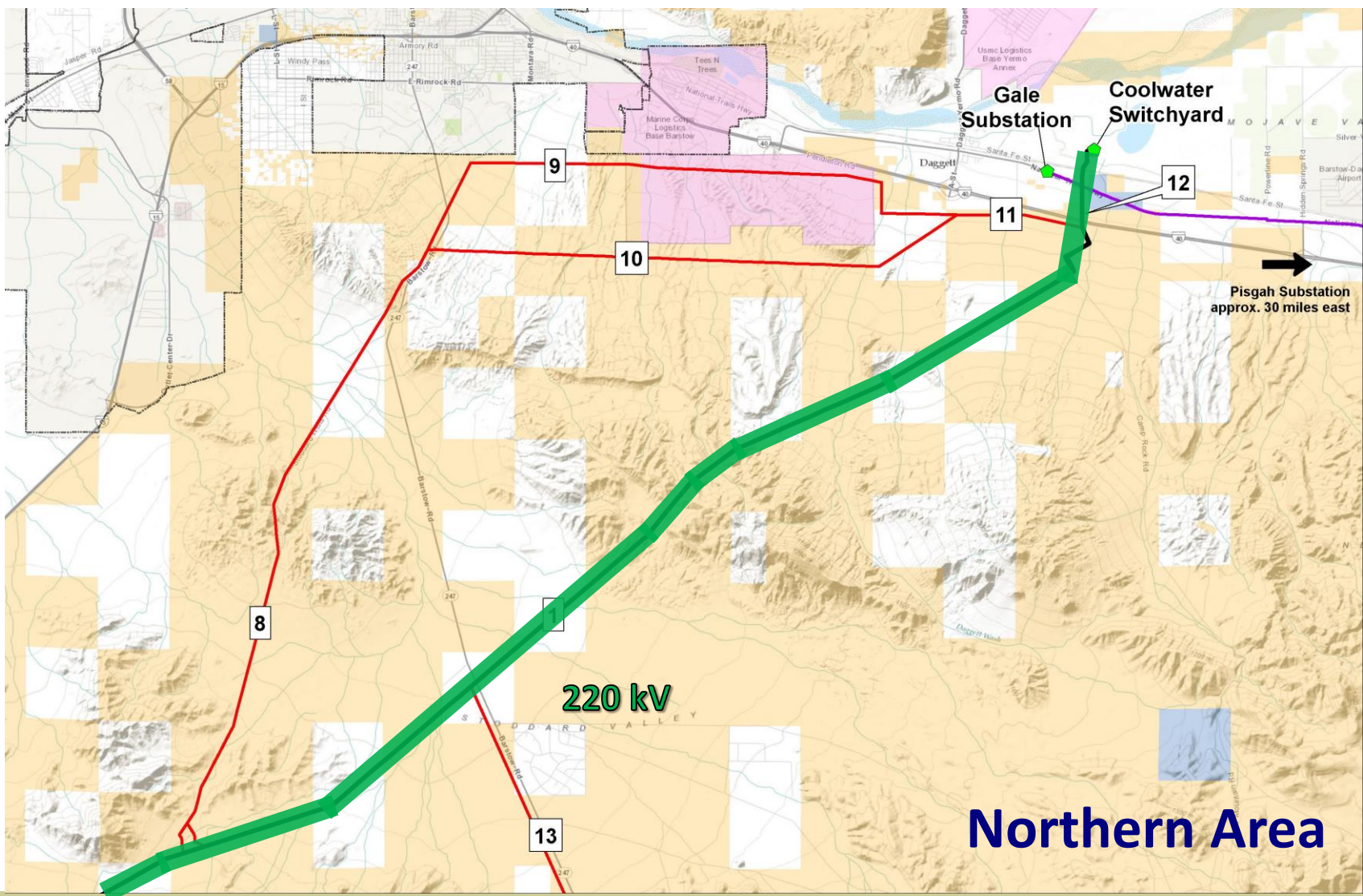
- The northern 48 miles (approx.) would consist of a 220-kV circuit primarily on double-circuit lattice steel towers (LSTs).
- The southern 16.5 miles (approx.) would consist of a 500-kV circuit on single-circuit lattice steel towers.

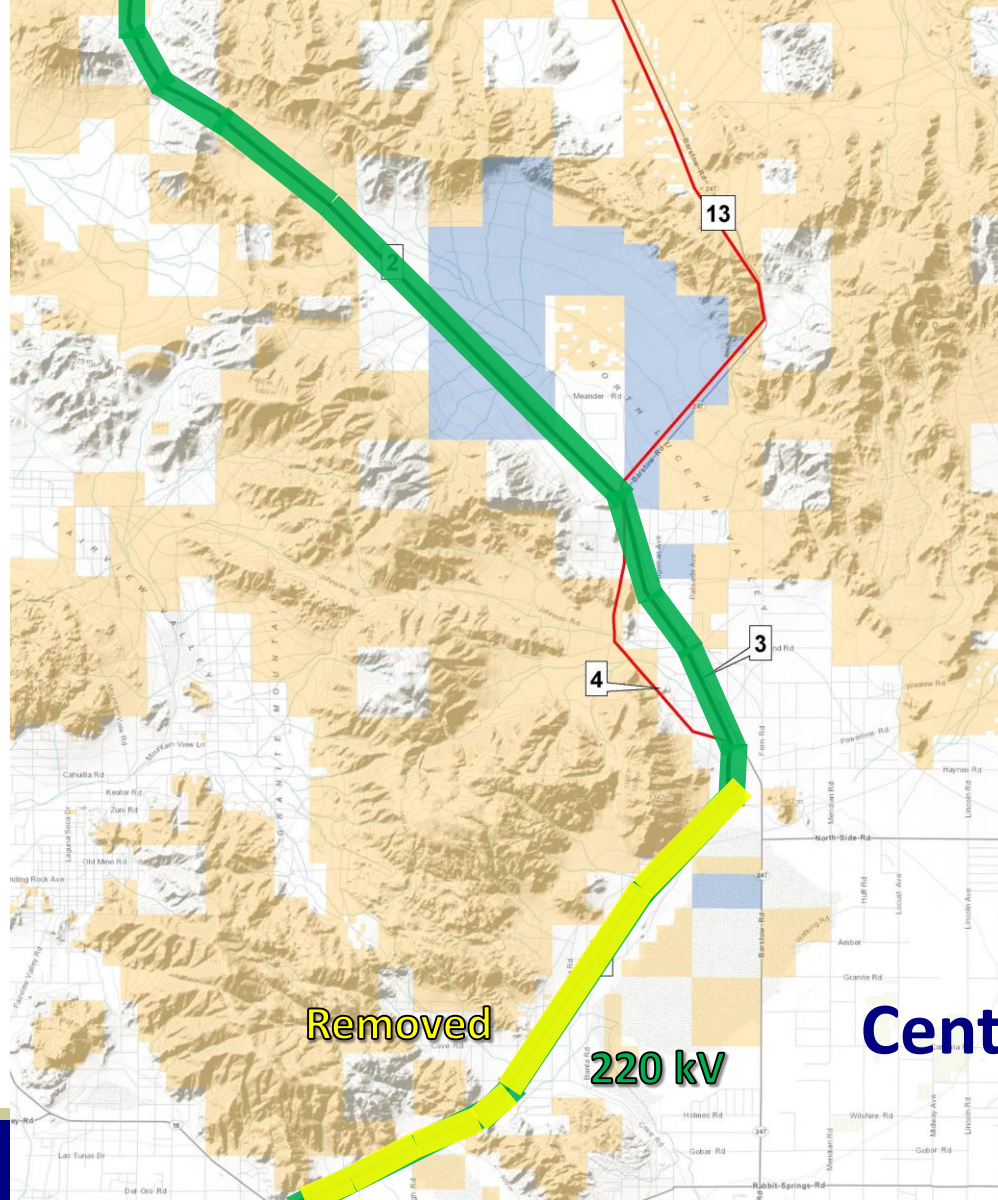


Transmission Structures

- About 29 miles of an existing 220-kV transmission line would be removed between Highway 247 and Lugo Substation.
- About 16.5 miles of another existing 220-kV transmission line would be removed between the Desert View (new) and Lugo substations.
- New telecommunication lines would be placed largely on existing wood poles.



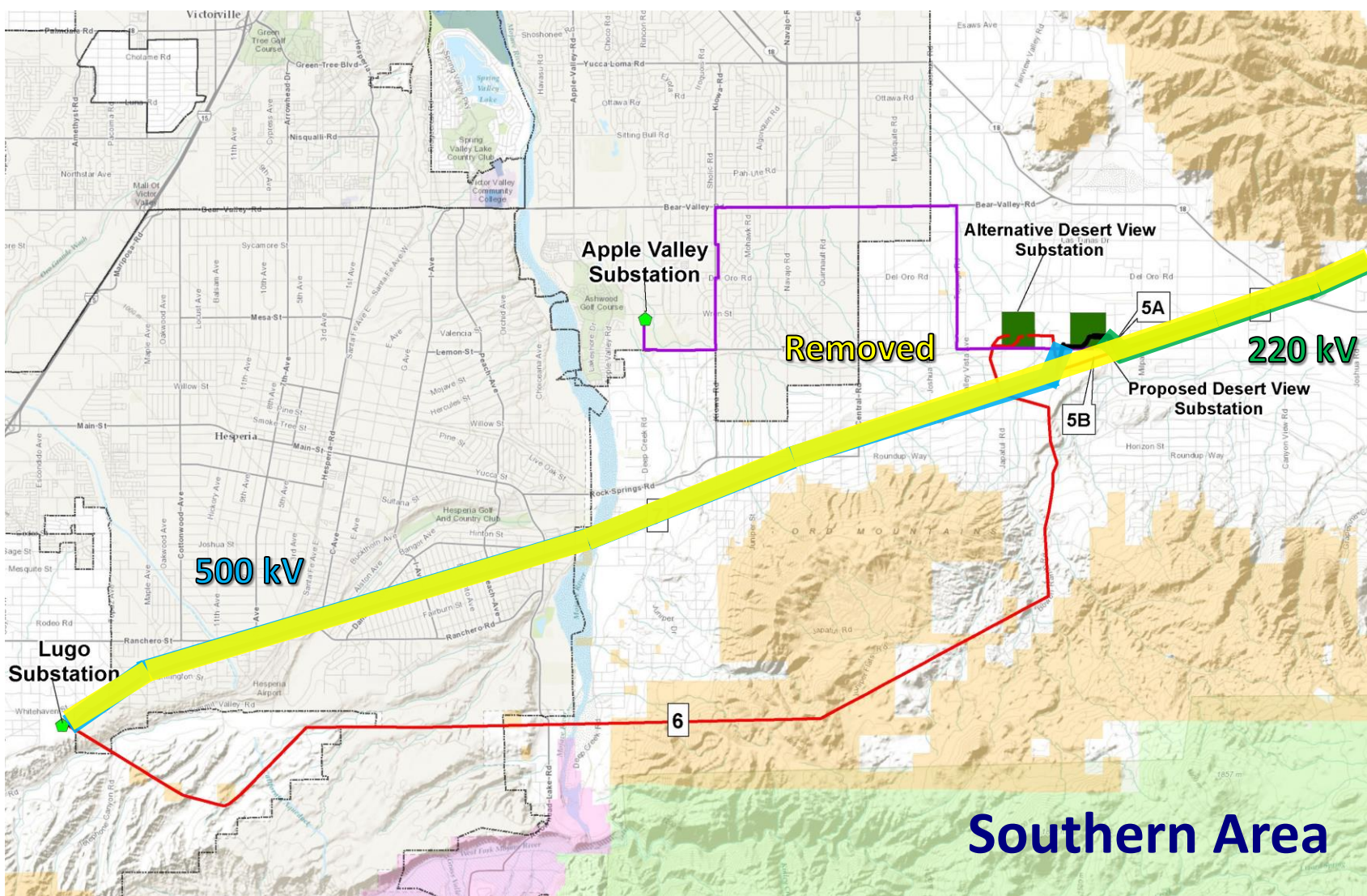




Removed

220 kV

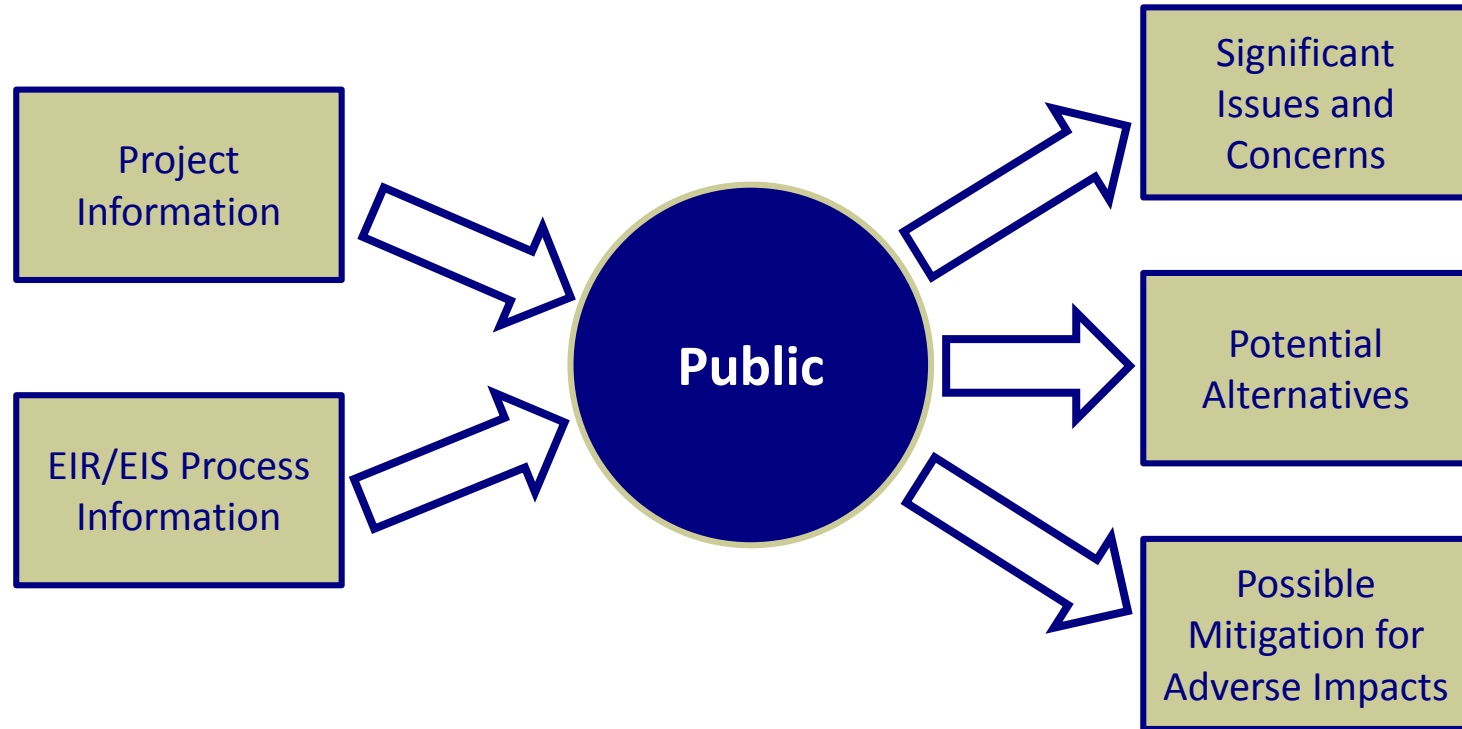
Central Area



Environmental Review Process

CEQA AND NEPA

Purpose of Scoping



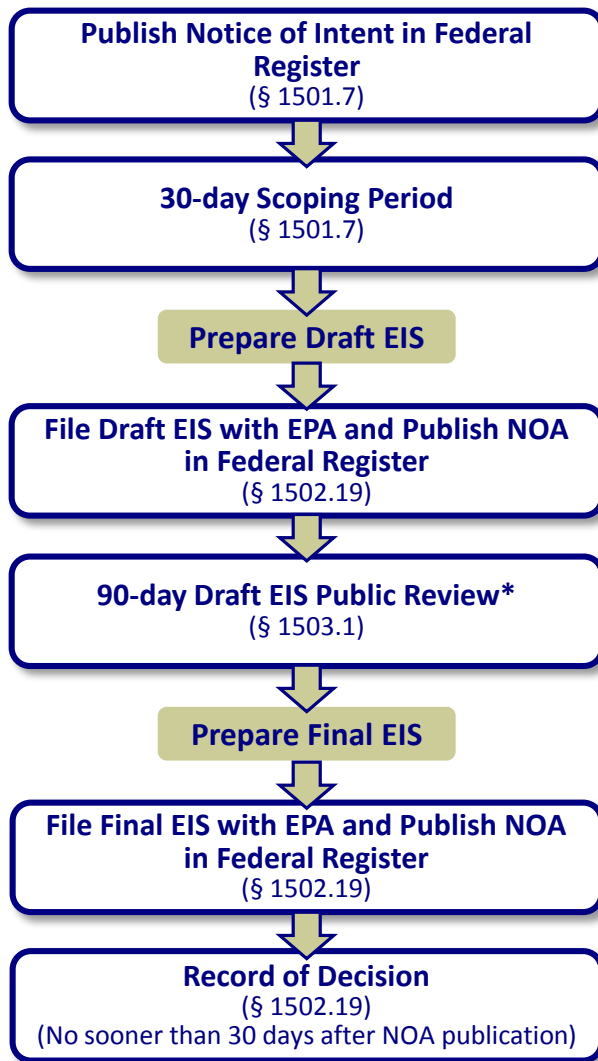
Objectives of Environmental Review

- Identify significant issues
- Assess potential impacts of the proposed project
- Identify ways to avoid or reduce impacts
- Disclose information about environmental impacts to the public
- Provide environmental information to decision makers at the CPUC and BLM
 - Decision makers will consider a range of factors in rendering their decisions, not just environmental factors
 - The EIR/EIS does not make any recommendations for approving or denying the proposed project

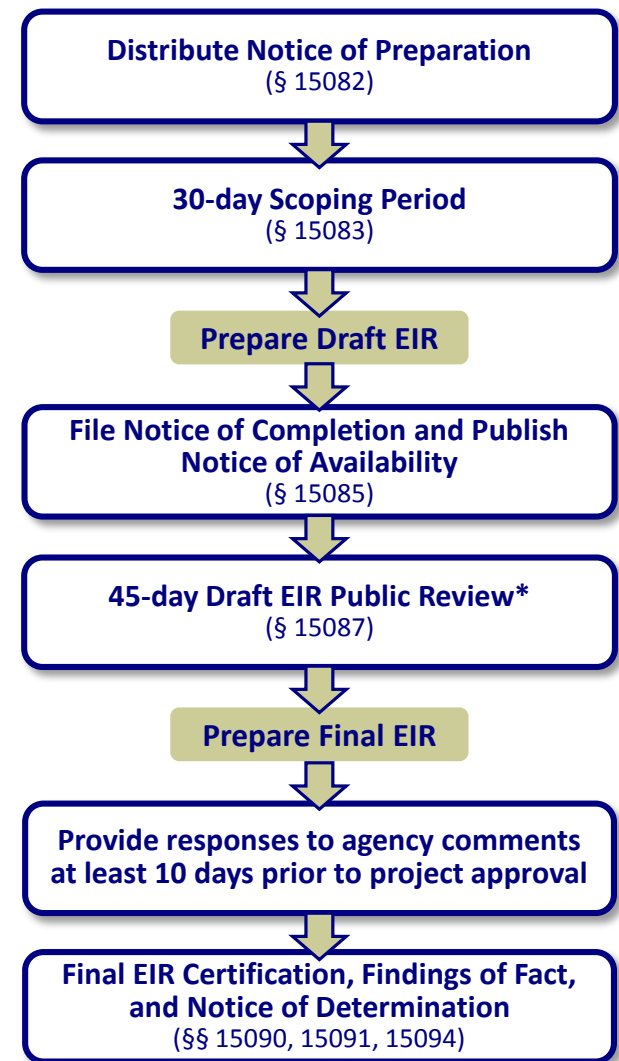
Decision to Prepare an EIR/EIS

- The CPUC and BLM reviewed the applications and environmental information submitted by SCE.
- Based on this information, the CPUC and BLM each determined that an EIR and an EIS need to be prepared.
 - An EIR/EIS is required when there are significant issues or environmental effects associated with a proposed project.
- The two agencies entered into a Memorandum of Understanding to prepare a joint EIR/EIS document.

EIS Process (NEPA)

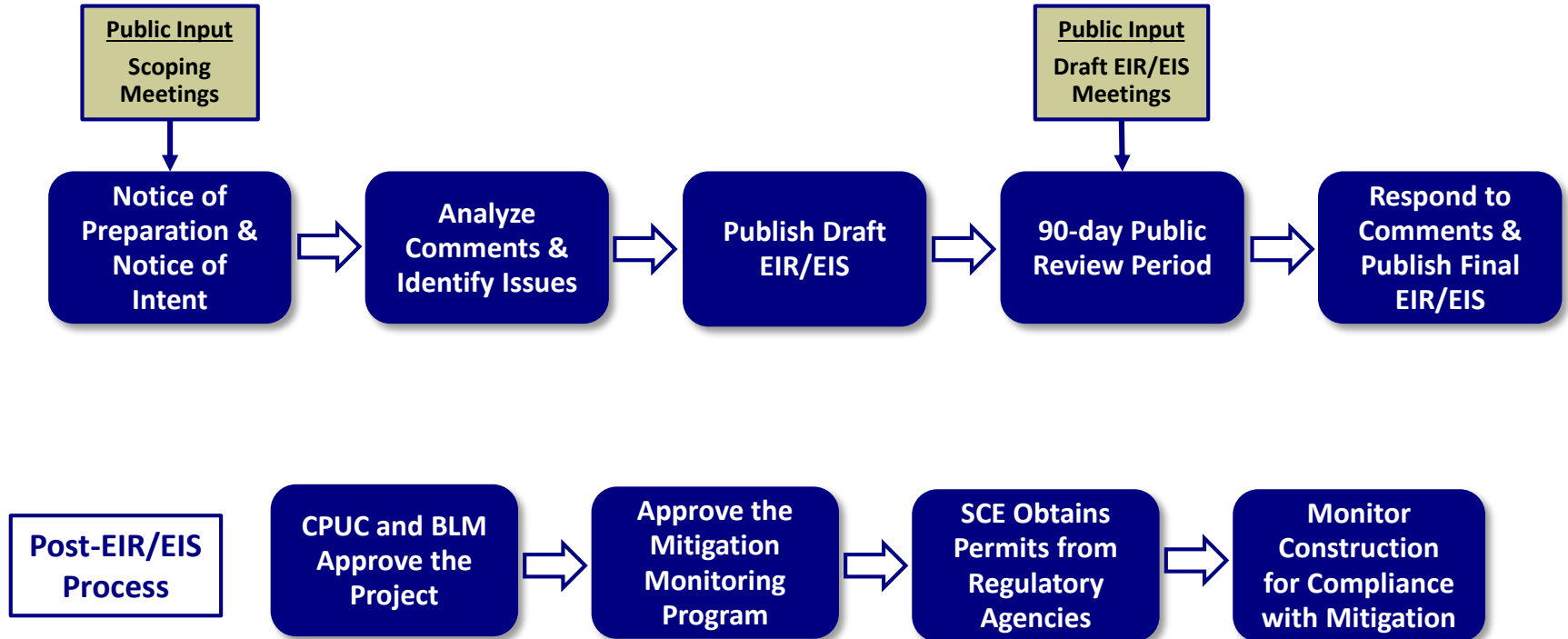


EIR Process (CEQA)



* Because the project involves a plan amendment, BLM's procedures require a 90-day review period for the Draft EIS.

EIR/EIS Process



Environmental Resources and Issues

- Air Resources
- Biological Resources
- Climate Change
- Cultural Resources
- Environmental Justice
- Geology and Soil Resources
- Hazards and Hazardous Materials
- Lands and Realty
- Mineral Resources
- Noise
- Paleontological Resources
- Recreation
- Transportation and Travel Management
- Utilities and Public Services
- Visual Resources
- Water Resources

Next Steps

- Analyze scoping comments and identify issues
- Formulate alternatives
- Conduct impact analysis
- Formulate mitigation measures
- Prepare Draft EIR/EIS

Written and Oral Public Comments

COOLWATER-LUGO TRANSMISSION PROJECT EIR/EIS

How to Submit Written Comments

- Please focus your comments on environmental concerns
- Submit comments in any of the following ways:

Fill out a comment form and submit it at this meeting (or fill mail it in after the meeting).

Mail comments to:
Coolwater-Lugo Scoping
c/o Aspen Environmental Group
5020 Chesebro Rd., Suite 200
Agoura Hills, CA 91301

E-mail comments to:
CLTP-EIR-EIS@aspeneg.com

- Comments must be received or postmarked by September 3, 2014
- All comments will become public information



Oral Comments

(Please fill out a speaker registration card)



Thank you for coming.