



235 Montgomery Street, Suite 935, San Francisco, CA 94104
Tel. 415-955-4775, Fax 415-955-4776, www.aspeneg.com

PROJECT MEMORANDUM

DOWNS SUBSTATION EXPANSION PROJECT

To: Eric Chiang, Project Manager, CPUC
From: Vida Strong, Aspen Project Manager
Date: February 6, 2015
Subject: Monitoring Report #10: January 26 to February 1, 2015

This report provides a summary of the construction and compliance activities associated with the Southern California Edison (SCE) Downs Substation Expansion Project.

A summary of the Notices to Proceed (NTPs) for construction and Minor Project Change (MPC) activities are provided in Tables 1 and 2, respectively (below).

CPUC Environmental Monitor (EM): David DuBois was on site January 27, 2015.

CPUC NTPs

#1 Downs Substation Expansion Site

NTP #1 was issued on October 22, 2014 for the site preparation, grading, and construction of the Downs Substation expansion, adjacent to the existing Downs Substation on the corner of South Downs Street and West Ridgecrest Boulevard in Ridgecrest. NTP #1 included conditions that had to be satisfied prior to the start of construction.

Summary of Activity:

1. Work continued Monday through Friday of the subject period. No work occurred Saturday or Sunday (January 31 & February 1)
2. Preparation of the substation pad and surveying of the substation pad for foundation locations continued. Gravel and materials continued to be stored on the substation pad (see Figure 1).
3. Installation of a Mechanical and Electrical Equipment Room (MEER) and associated wiring continued during the subject period (see Figure 2).
4. Installation of a detention pond at the southeast portion of the site remains partially complete. Pooling water has slowed completion of this work (see Figures 3).
5. Concrete deliveries and foundation installation continued in the substation expansion area during the subject period.

Environmental Compliance:

1. Cultural monitoring has been suspended and did not occur during the subject period. The majority of grading is complete and the ground surface is 100% disturbed.
2. Biological monitoring was conducted during the subject period. No biological resources were observed during the subject period.
3. No dust issues were observed by the CPUC EM.
4. Desert tortoise fencing continued to function. No desert tortoises have been observed at the substation site since the start of construction.



5. Following the approval of MPC #1 (see Table 2 below), vehicles are using an alternate route to access the Project work area that avoids public traffic. During the subject period, the CPUC EM observed that the entrance was being left open; however, a biological monitor was posted at the gate throughout the day to check for wildlife (including desert tortoise).
6. Despite muddy conditions, track out was minimal during the subject period. A street sweeper is onsite to manage roadway cleaning as necessary (see Figure 4)
7. Concrete wash-outs are properly contained.
8. Trash containers were observed to be securely covered during the subject period.

Notices to Proceed

Table 1 summarizes the Notices to Proceed (NTP) for the Downs Substation Expansion Project.

Table 1
Notice to Proceeds (NTPs)
(Updated 02/06/15)

| NTP #1 | Date Requested | Date Issued | Phase | Description |
|--------|----------------|-------------|----------------------------|--|
| NTP #1 | 9/4/14 | 10/22/14 | Downs Substation Expansion | Site preparation/grading, installation of substation components in the expanded Down's Substation footprint. |

Minor Project Changes

Table 2 summarizes the Minor Project Changes for the Downs Substation Expansion Project.

Table 2
Minor Project Changes (MPCs)
(Updated 02/06/15)

| MPC | Date Requested | Date Issued | Phase | Description |
|--------|----------------|-------------|----------------------------|--|
| MPC #1 | 12/5/14 | 12/15/14 | Downs Substation Expansion | Requests the use of an existing dirt roadway that connects the southwest corner of the work area to Church Avenue. |

PROJECT PHOTOGRAPHS



Figure 1 – Gravel and materials continue to be stored on the substation pad. View northeast, January 27, 2015.



Figure 2 – Installation of the MEER building and associated wiring occurred during the subject period. View west, January 27, 2015.



Figure 3 – Pooled water has slowed completion of the site's detention basin. View southwest 01/08/15 above, 01/13/15 middle, 01/27/15 below.

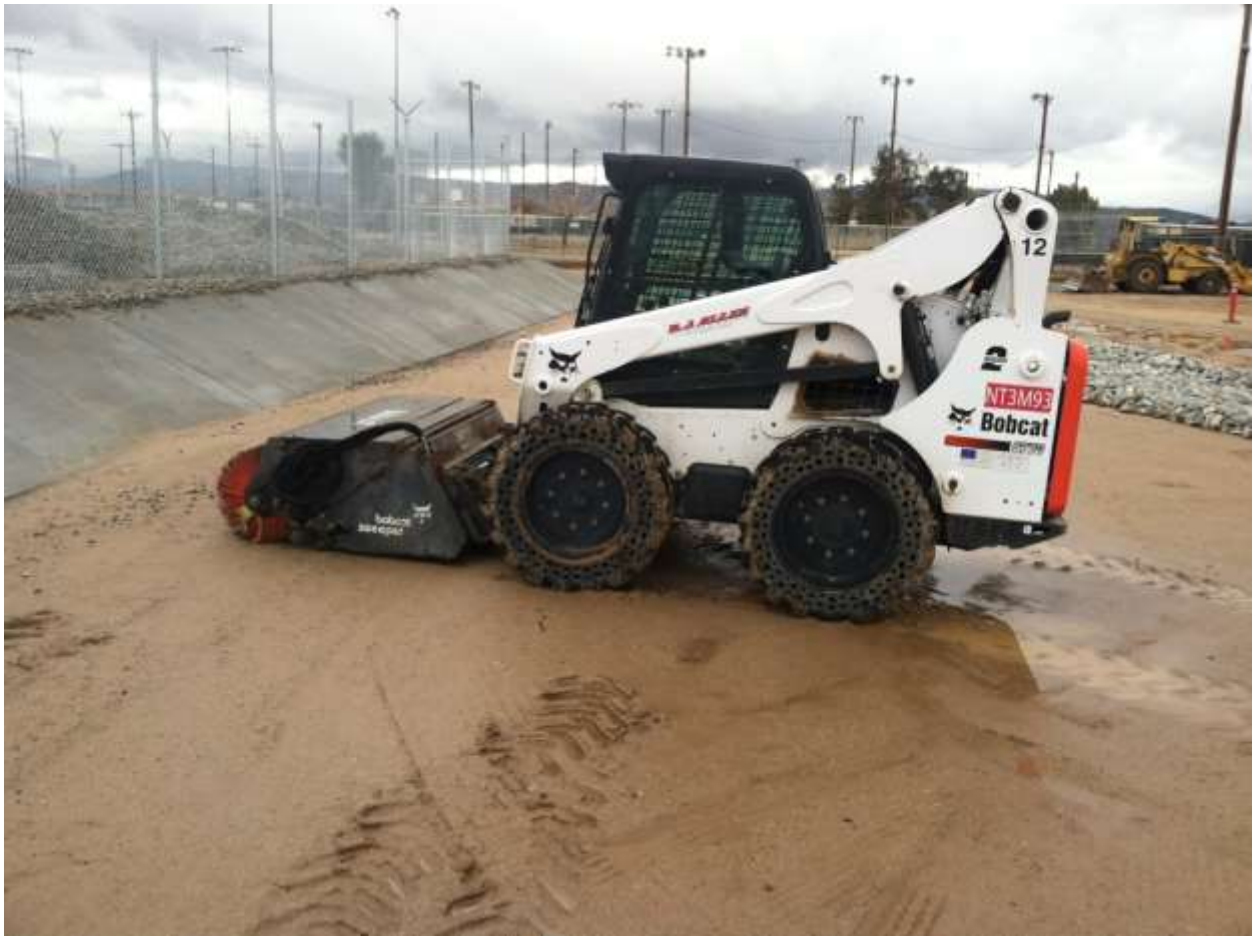


Figure 4 – A street sweeper is being used for controlling track out. View southeast, January 27, 2015.