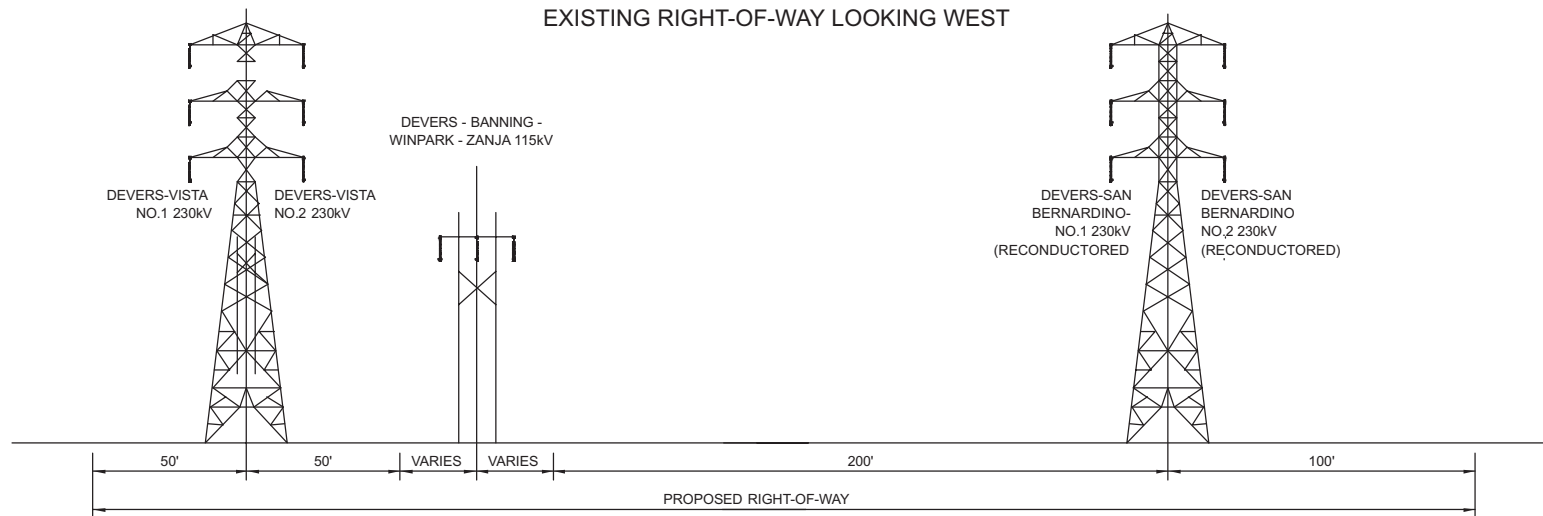


SECTION A-A  
 EXISTING RIGHT-OF-WAY LOOKING WEST



SECTION A-A  
 PROPOSED RIGHT-OF-WAY LOOKING WEST



Source: Proposed Devers-Palo Verde No. 2 Transmission Project,  
 Proponent's Environmental Assessment, March 2005

**Devers-Palo Verde No. 2  
 Transmission Line Project**

Figure B-13a  
**West of Devers: Typical Section between  
 Devers Substation and Banning Junction**