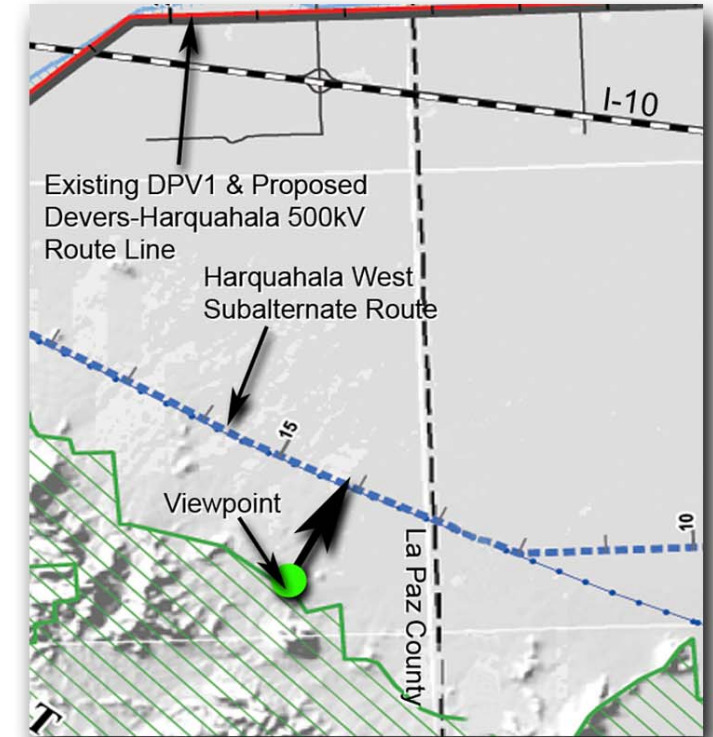




Existing Conditions - Looking northeast across the Harquahala Plain.
 Photograph taken 7/26/04 at 1:06 p.m. using a 50mm focal length.

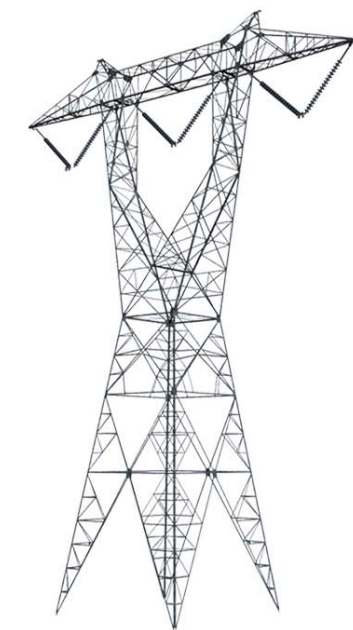


Viewpoint located just north of Courthouse Rock looking northeast approximately 1.5 miles from the Harquahala-West subalternate route.



Simulation - Harquahala-West subalternate route for Devers-Palo Verde No. 2, 500kV lattice steel structure transmission line looking northeast across the Harquahala Plain.

This image is most accurately viewed at a distance of approximately 11 inches from the page to match the actual field of view.



Typical 500kV single-circuit lattice steel tower used in simulations.

Figure 5-8