

Proposed Temporary Equipment Staging and Materials Storage Yard

Devers Yard

Figure 3a

Projection: NAD 83 UTM Zone 11

Issued For:

Project Number:

Prepared By: Dan Meeker

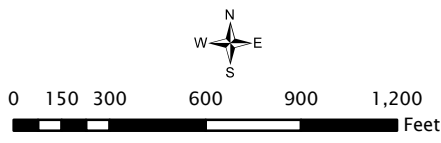
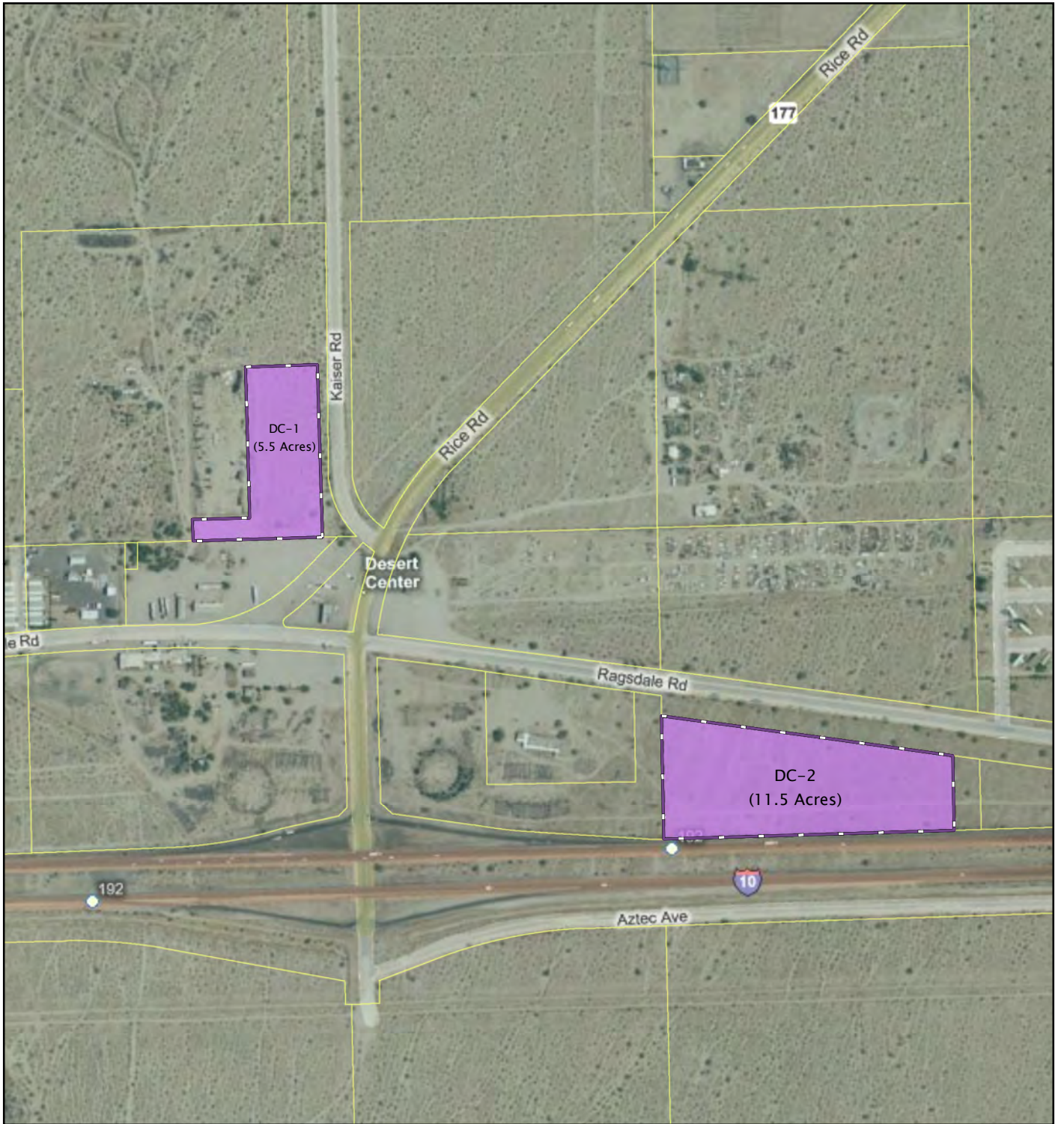
Date: August 10, 2010

Contains Transmission Information
Distribution limited to
FERC Standards of Conduct

CONFIDENTIAL
Contains Critical Electric
Infrastructure Information
If any questions contact
Corporate Security (27875)
for handling/storage requirements.



Southern California Edison (SCE) has no reason to believe that there are any inaccuracies or defects with information incorporated in this work and make no representations of any kind, including, but not limited to, the warranties of merchantability or fitness for a particular use, nor are any such warranties to be implied, with respect to the information or data, furnished herein. No part of this map may be reproduced or transmitted in any form or by any means electronic or mechanical, including photocopying and recording system, except as expressly permitted in writing by SCE.



Proposed Temporary Equipment Staging and Materials Storage Yard

Desert Center Yards 1 & 2

Figure 3b

Projection: NAD 83 UTM Zone 11

Issued For: _____ Project Number: _____
 Prepared By: Dan Meeker Date: August 12, 2010

Contains Transmission Information
 Distribution limited to
 FERC Standards of Conduct

CONFIDENTIAL
 Contains Critical Electric
 Infrastructure Information
 If any questions contact
 Corporate Security (27875)
 for handling/storage requirements.



Southern California Edison (SCE) has no reason to believe that there are any inaccuracies or defects with information incorporated in this work and make no representations of any kind, including, but not limited to, the warranties of merchantability or fitness for a particular use, nor are any such warranties to be implied, with respect to the information or data, furnished herein. No part of this map may be reproduced or transmitted in any form or by any means electronic or mechanical, including photocopying and recording system, except as expressly permitted in writing by SCE.



CHIRIACO SUMMIT AIRPORT

**Proposed
Chiriaco Summit Yard**
(11.4 Acres)



0 75 150 300 450 600 Feet

**Proposed Temporary Equipment
Staging and Materials Storage Yard**

Chiriaco Summit Yard

Figure 3c

Projection: NAD 83 UTM Zone 11

Issued For:

Project Number:

Prepared By: Dan Meeker

Date: August 10, 2010

Contains Transmission Information
Distribution limited to
FERC Standards of Conduct

CONFIDENTIAL
Contains Critical Electric
Infrastructure Information
If any questions contact
Corporate Security (27875)
for handling/storage requirements.



Southern California Edison (SCE) has no reason to believe that there are any inaccuracies or defects with information incorporated in this work and make no representations of any kind, including, but not limited to, the warranties of merchantability or fitness for a particular use, nor are any such warranties to be implied, with respect to the information or data, furnished herein. No part of this map may be reproduced or transmitted in any form or by any means electronic or mechanical, including photocopying and recording system, except as expressly permitted in writing by SCE.



BLYTHE AIRPORT

Proposed Blythe Yard
(10 Acres)

W Hobson Way

W Hobson Way

W Hobson Way

W Hobson Way

	<p>Proposed Temporary Equipment Staging and Materials Storage Yard</p> <p>Blythe Yard</p>	<p>Figure 3d</p> <p>Projection: NAD 83 UTM Zone 11</p>
<p>Issued For: _____ Project Number: _____</p> <p>Prepared By: Dan Meeker Date: July 29, 2010</p>	<p>Contains Transmission Information Distribution limited to FERC Standards of Conduct</p> <p>CONFIDENTIAL Contains Critical Electric Infrastructure Information If any questions contact Corporate Security (27875) for handling/storage requirements.</p> <div style="display: flex; align-items: center;"> <p>SOUTHERN CALIFORNIA EDISON <small>An EDISON INTERNATIONAL™ Company</small></p> </div> <p><small>Southern California Edison (SCE) has no reason to believe that there are any inaccuracies or defects with information incorporated in this work and make no representations of any kind, including, but not limited to, the warranties of merchantability or fitness for a particular use, nor are any such warranties to be implied, with respect to the information or data, furnished herein. No part of this map may be reproduced or transmitted in any form or by any means electronic or mechanical, including photocopying and recording system, except as expressly permitted in writing by SCE.</small></p>	

I:\DPV2_PotentialYards\MXD's\BlytheYard_1



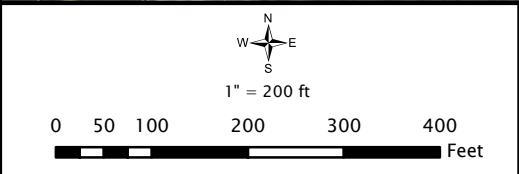
20' Access Rd (Not a Part of the Site)
(0.5 Acres)

HIGHLAND SPRINGS RD

Proposed
Highland Springs Yard
(6.0 Acres)

Approximately 1.3 miles
North of the I-10 Frwy

I:\DPV2_PotentialYards\MXD\HighlandSpringsYard.mxd



Proposed Temporary Equipment Staging and Materials Storage Yard
Highland Springs Yard

Figure 3e
Projection: NAD 83 UTM Zone 11

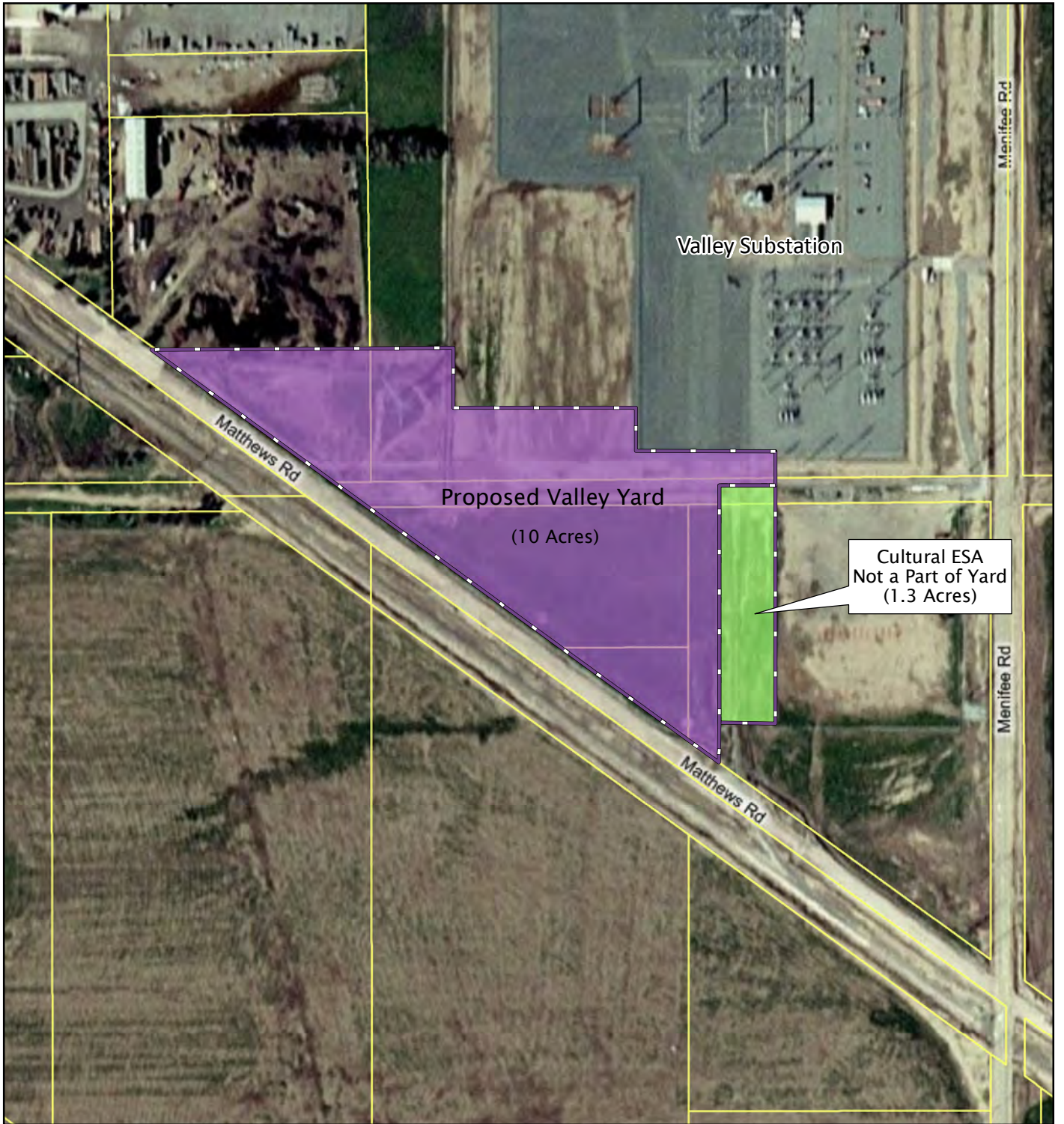
Issued For: _____ Project Number: _____
Prepared By: Dan Meeker Date: August 11, 2010

Contains Transmission Information
Distribution limited to
FERC Standards of Conduct

CONFIDENTIAL
Contains Critical Electric
Infrastructure Information
If any questions contact
Corporate Security (27875)
for handling/storage requirements.

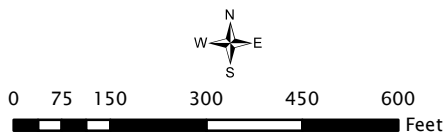
SOUTHERN CALIFORNIA
EDISON
An EDISON INTERNATIONAL Company

Southern California Edison (SCE) has no reason to believe that there are any inaccuracies or defects with information incorporated in this work and make no representations of any kind, including, but not limited to, the warranties of merchantability or fitness for a particular use, nor are any such warranties to be implied, with respect to the information or data, furnished herein. No part of this map may be reproduced or transmitted in any form or by any means electronic or mechanical, including photocopying and recording system, except as expressly permitted in writing by SCE.



Cultural ESA
Not a Part of Yard
(1.3 Acres)

I:\DPV2_PotentialYards\MXDs\ValleyYard.mxd



Proposed Temporary Equipment Staging and Materials Storage Yard

Valley Yard

Figure 3f

Projection: NAD 83 UTM Zone 11

Issued For: Project Number:
Prepared By: Dan Meeker Date: July 29, 2010

Contains Transmission Information
Distribution limited to
FERC Standards of Conduct

CONFIDENTIAL
Contains Critical Electric
Infrastructure Information
If any questions contact
Corporate Security (27875)
for handling/storage requirements.



Southern California Edison (SCE) has no reason to believe that there are any inaccuracies or defects with information incorporated in this work and make no representations of any kind, including, but not limited to, the warranties of merchantability or fitness for a particular use, nor are any such warranties to be implied, with respect to the information or data, furnished herein. No part of this map may be reproduced or transmitted in any form or by any means electronic or mechanical, including photocopying and recording system, except as expressly permitted in writing by SCE.