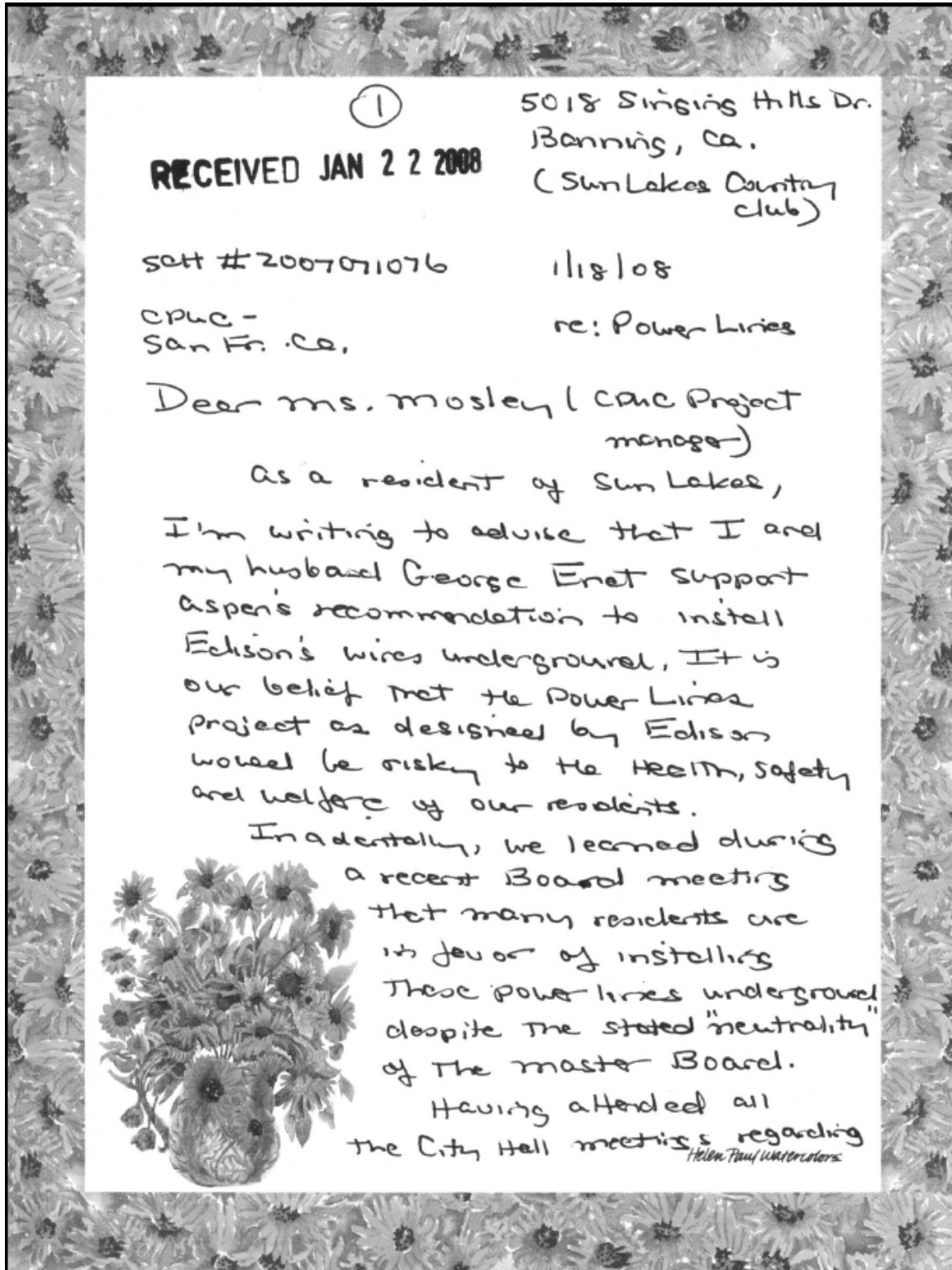
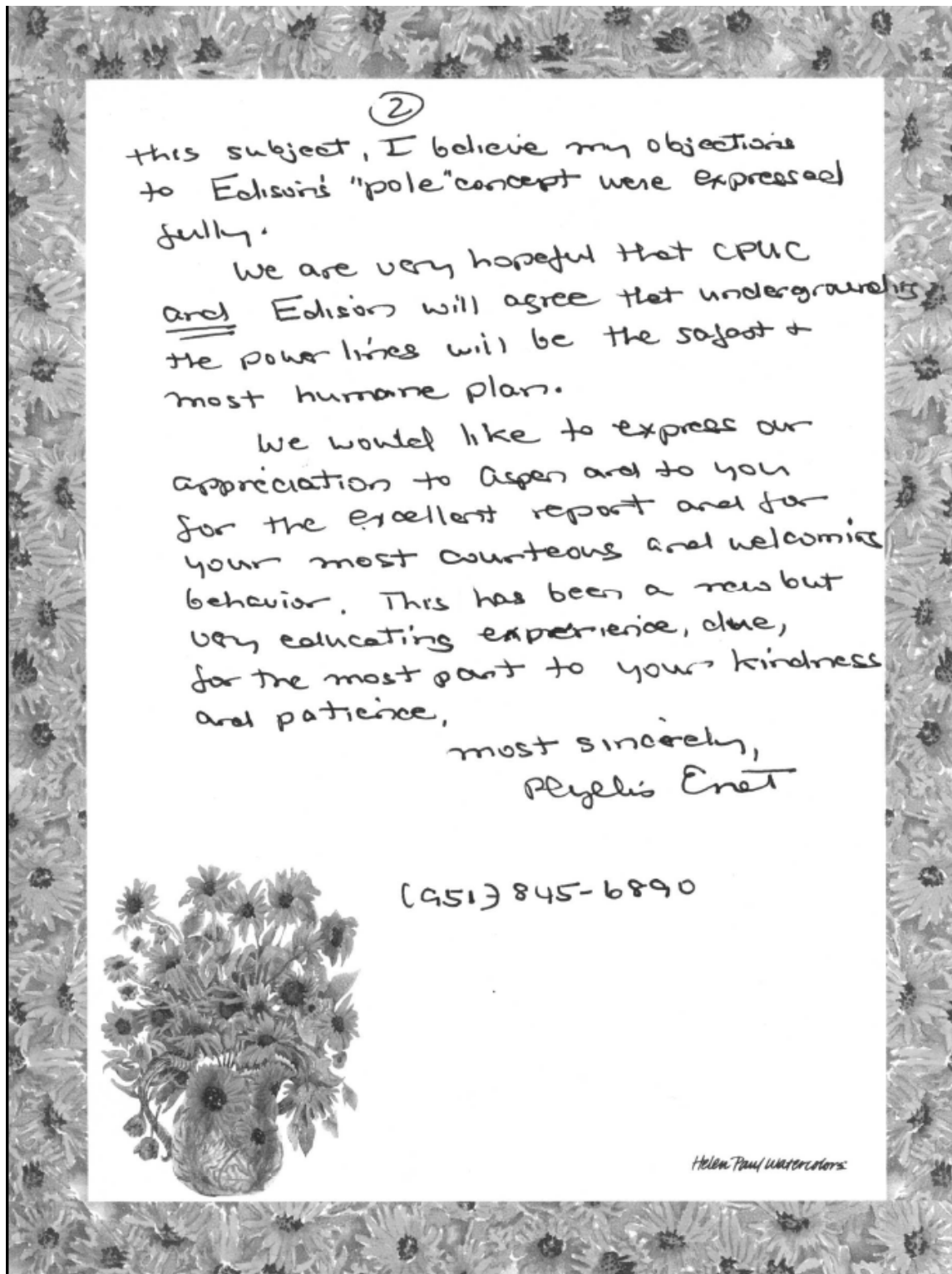


Comment Set C35



C35-1

Comment Set C35, continued



C35-1

Responses to Comment Set C35 – Phyllis Enet

- C35-1** Please note that placement of the subtransmission line underground is not a recommendation by the EIR authors or CPUC Project Staff. The final decision on the alternative that will be approved is up to the vote of the five-member California Public Utilities Commission subsequent to the certification of the Final EIR. Your support for the Partial Underground Alternative has been noted. The Environmentally Superior Alternative has been re-evaluated and is identified in the Recirculated Draft EIR, Section E (July 2008) as the Proposed Project. Please see General Response GR-1 for a discussion regarding the change in determination of the Environmentally Superior Alternative. Also, please see original Draft EIR (December 2007) Section D.7 (Hazards and Hazardous Materials) regarding health and safety concerns.