

Figure 2-3.3, El Casco Substation to M30 T2 and El Casco Substation to M29 T2
 Proposed Fiber Optic Cable Routes (Approximate Locations)

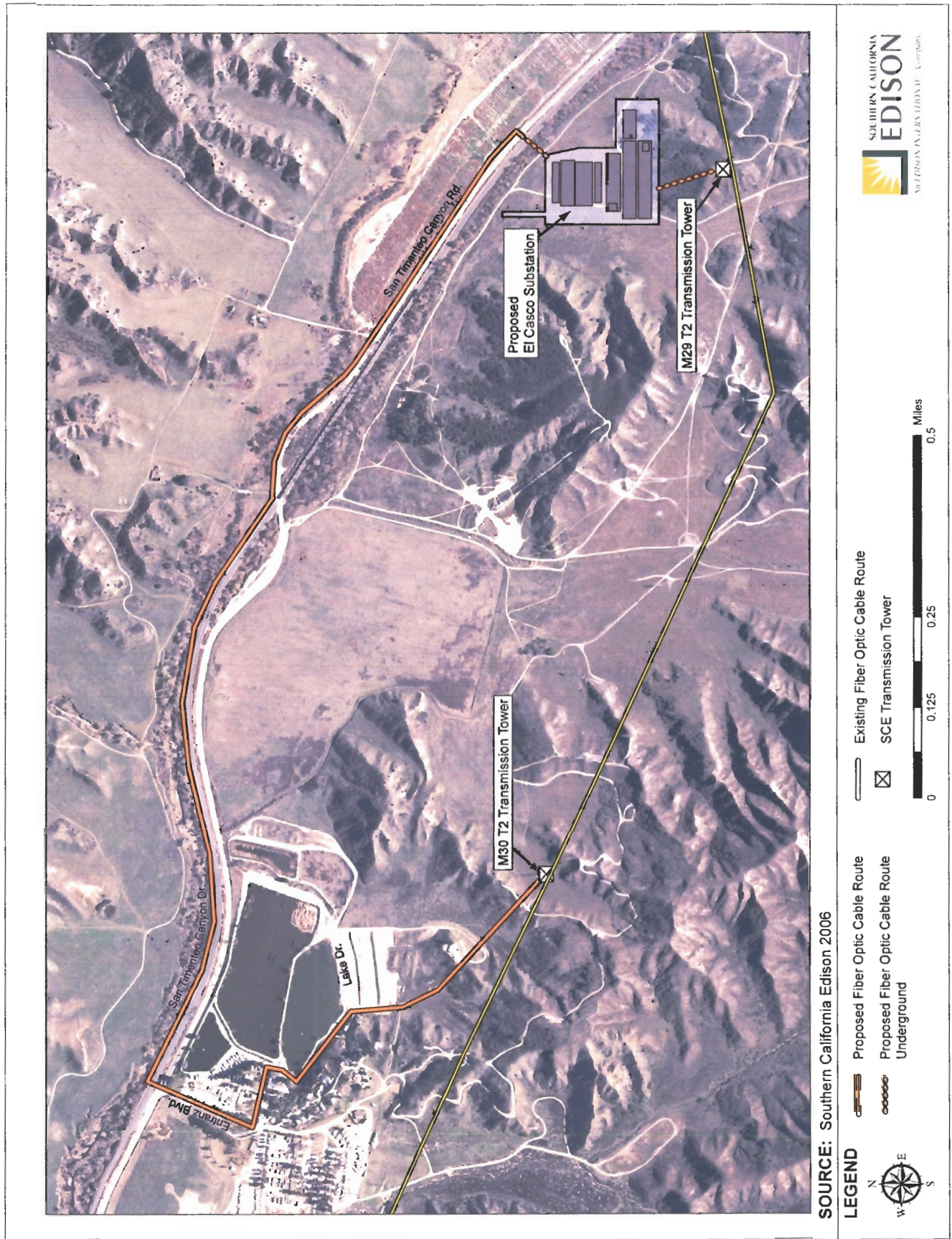
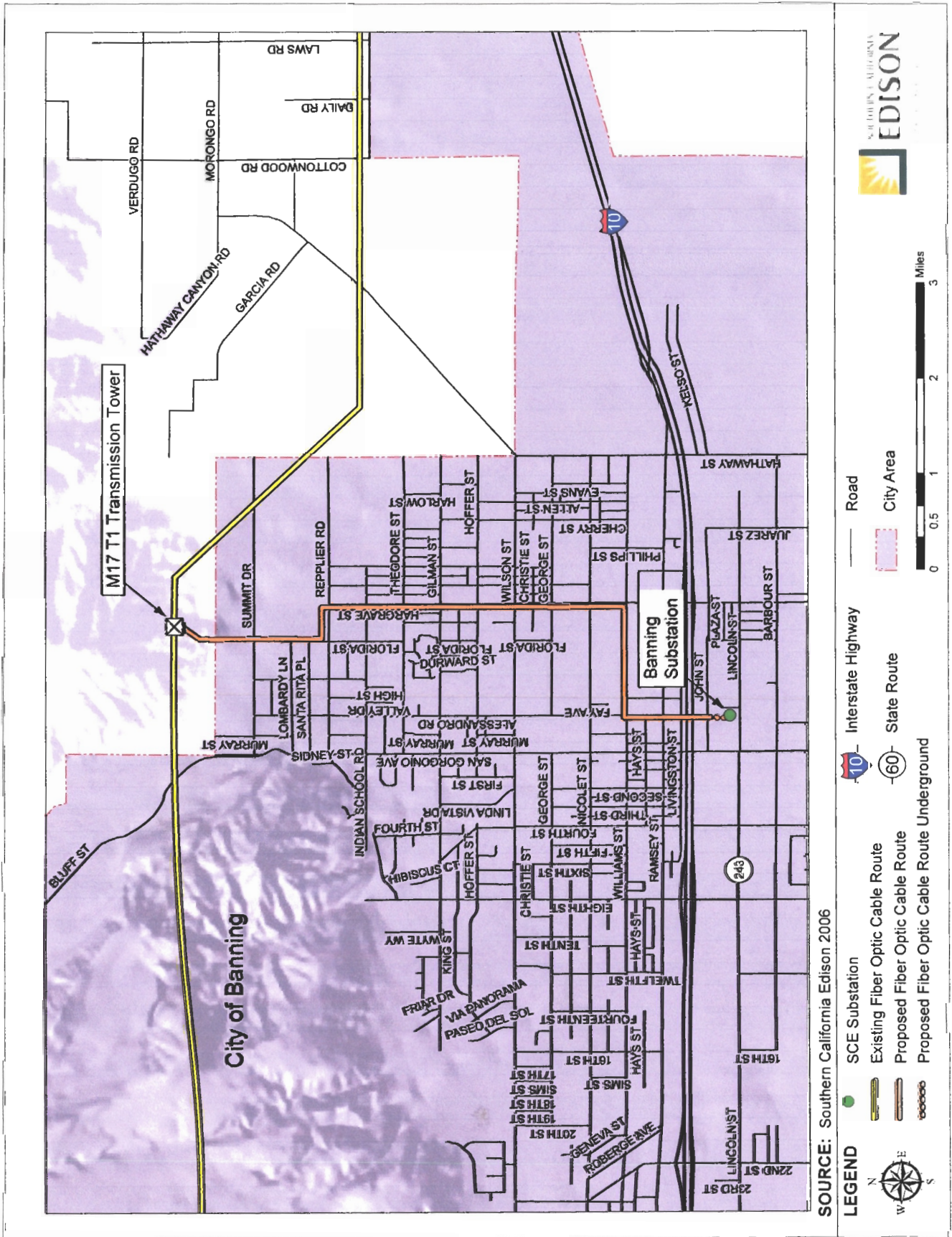


Figure 2-3.4, Banning Substation to M17 T1 Proposed Fiber Optic Cable Route (Approximate Location)



SOURCE: Southern California Edison 2006

- LEGEND**
- SCE Substation
 - Existing Fiber Optic Cable Route
 - Proposed Fiber Optic Cable Route
 - Proposed Fiber Optic Cable Route Underground
 - Interstate Highway
 - State Route
 - Road
 - City Area

