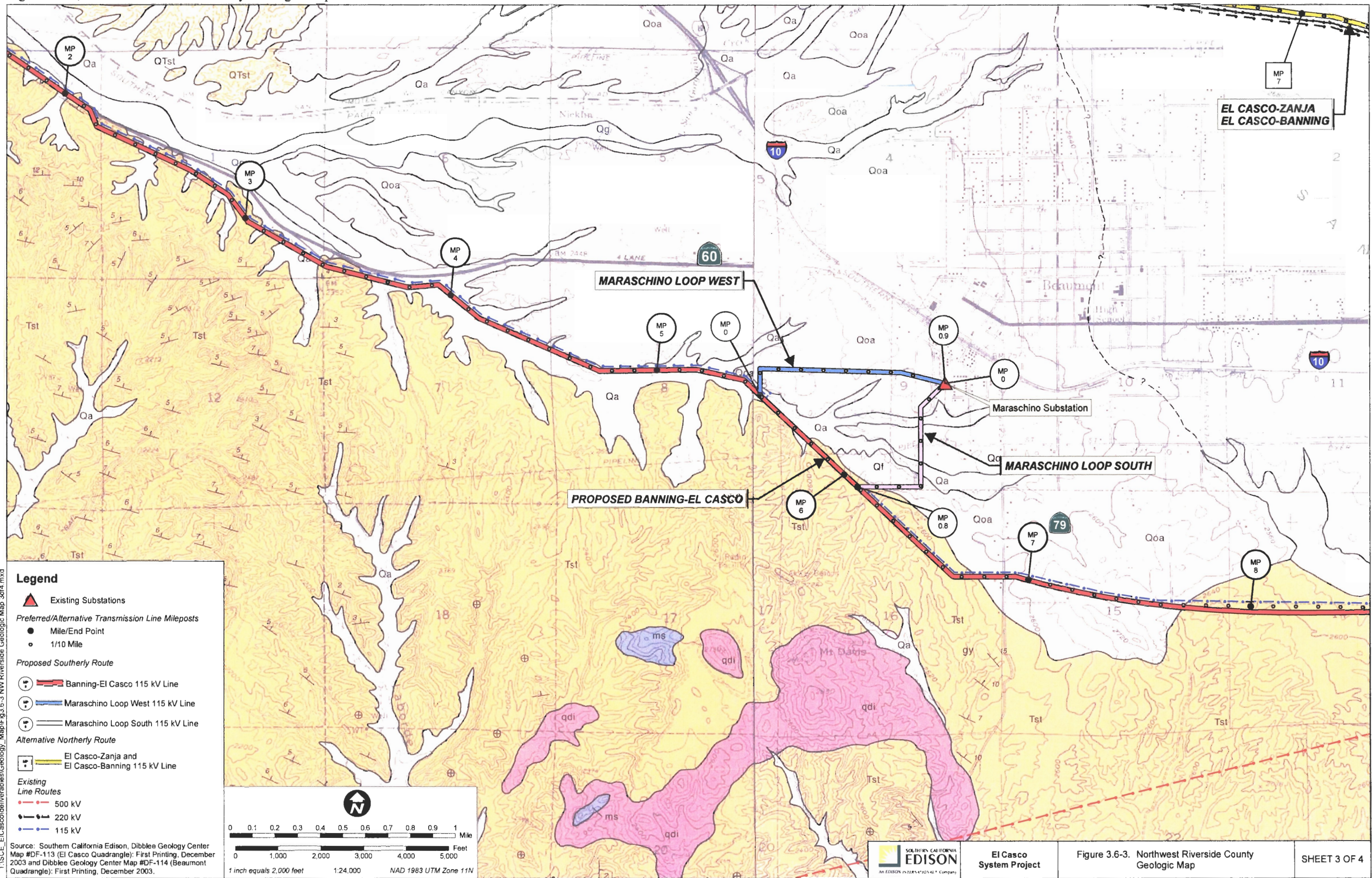


Figure 3.6-3, Northwest Riverside County Geologic Map



Legend

- Existing Substations
- Preferred/Alternative Transmission Line Mileposts
 - Mile/End Point
 - 1/10 Mile
- Proposed Southerly Route
 - Banning-El Casco 115 kV Line
 - Maraschino Loop West 115 kV Line
 - Maraschino Loop South 115 kV Line
- Alternative Northerly Route
 - El Casco-Zanja and El Casco-Banning 115 kV Line
- Existing Line Routes
 - 500 kV
 - 220 kV
 - 115 kV

Source: Southern California Edison, Dibblee Geology Center Map #DF-113 (El Casco Quadrangle); First Printing, December 2003 and Dibblee Geology Center Map #DF-114 (Beaumont Quadrangle); First Printing, December 2003.

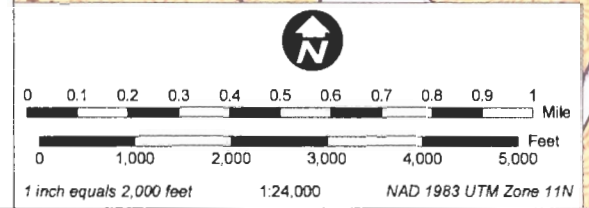
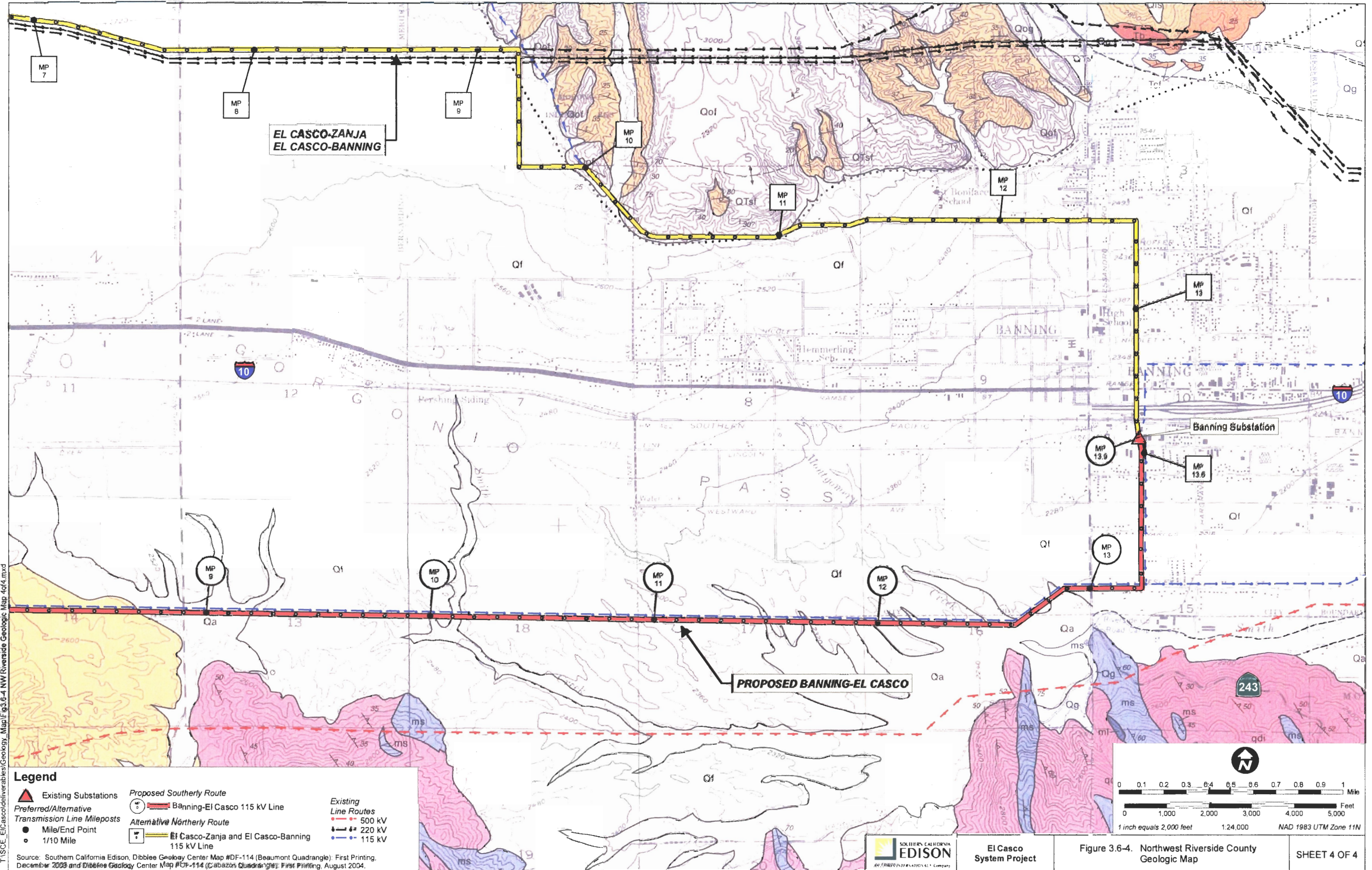


Figure 3.6-4, Northwest Riverside County Geologic Map



T:\SC_El_Casco\delivarables\Geology_Map\Fig.3.6-4_NW_Riverside_Geologic_Map_4of4.mxd