

Figure 3.6-15, Soils - Zanja Substation and Mill Creek Communications Site

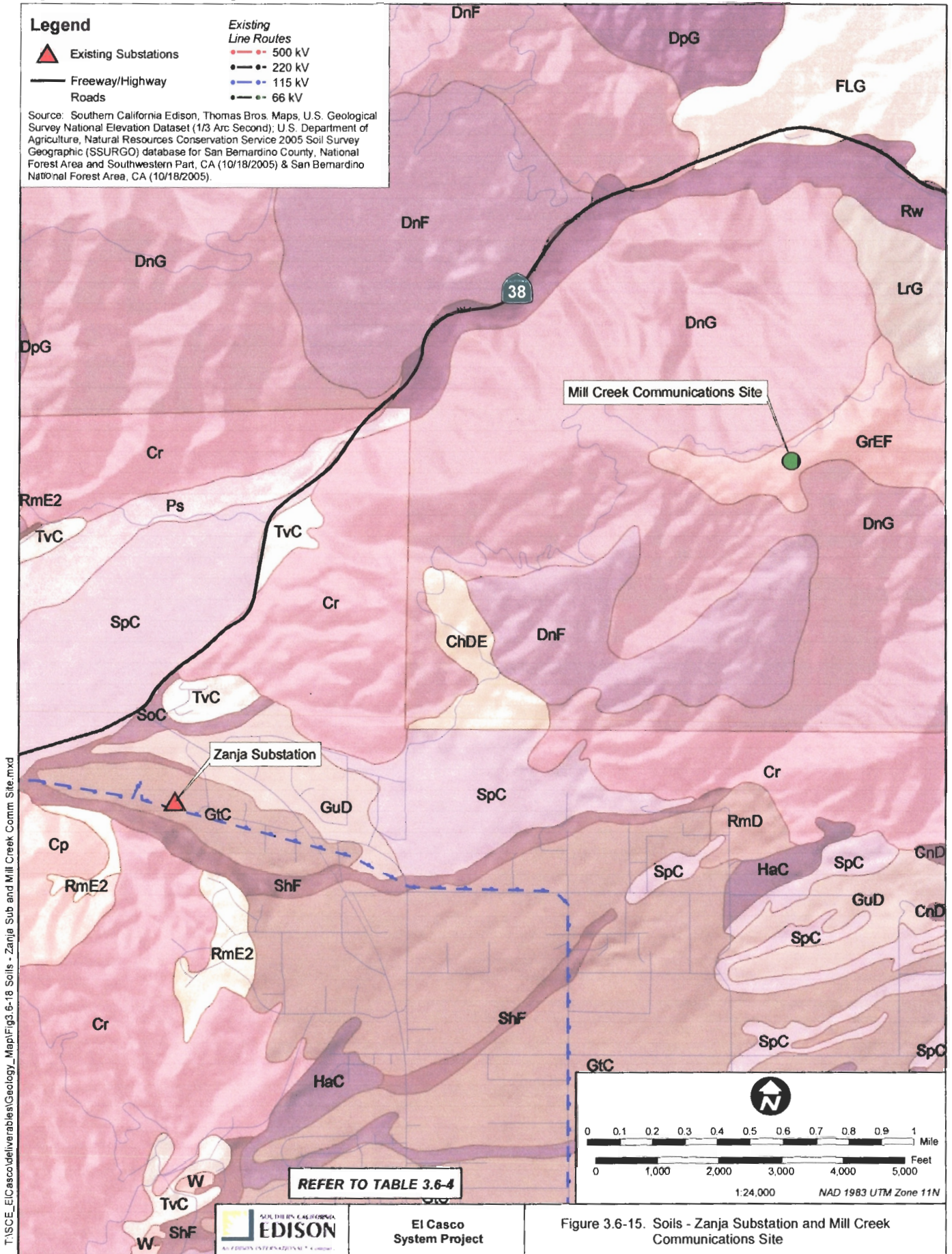
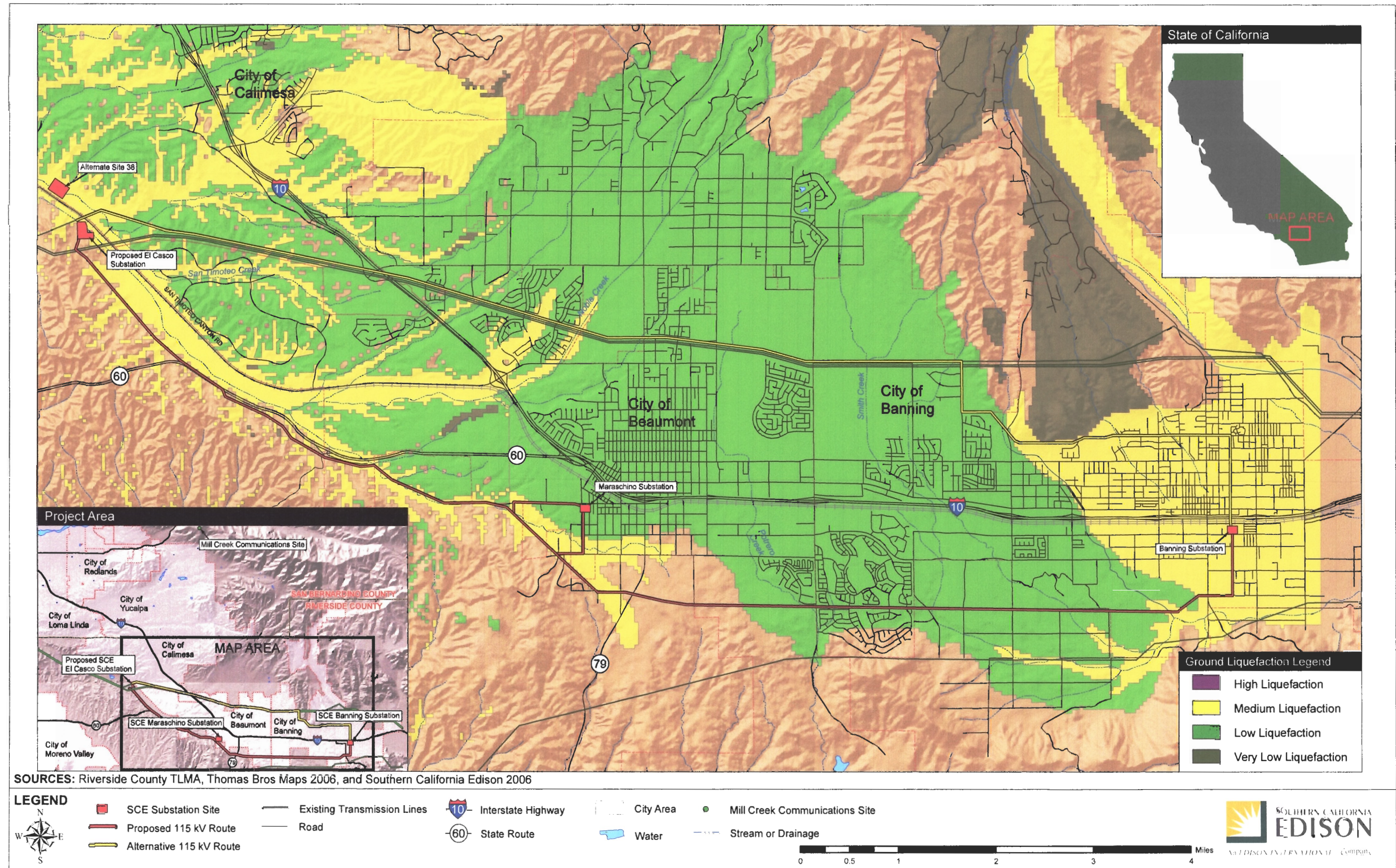


Figure 3.6-15. Soils - Zanja Substation and Mill Creek Communications Site

Figure 3.6-16, Soil Liquefaction Potential



SOURCES: Riverside County TLMA, Thomas Bros Maps 2006, and Southern California Edison 2006



- | | | | | |
|--------------------------|-----------------------------|--------------------|-----------|--------------------------------|
| SCE Substation Site | Existing Transmission Lines | Interstate Highway | City Area | Mill Creek Communications Site |
| Proposed 115 kV Route | Road | State Route | Water | Stream or Drainage |
| Alternative 115 kV Route | | | | |

