



5020 Chesebro Road, Suite 200, Agoura Hills, CA 91301-2285
Tel. 818-597-3407, Fax 818-597-8001, www.aspeneg.com

PROJECT MEMORANDUM

PG&E EMBARCADERO-POTRERO 230 kV TRANSMISSION PROJECT

To: Billie Blanchard, Project Manager, CPUC
From: Vida Strong, Aspen Project Manager
Date: June 10, 2015
Subject: Monitoring Report #37 – May 25 to May 31, 2015

This report provides a summary of the construction and compliance activities associated with the PG&E Embarcadero-Potrero (E-P) 230 kV Transmission Project.

A summary of the Notices to Proceed (NTPs) for construction and Minor Project Change (MPC) activities are provided in Tables 1 and 2, respectively (below).

CPUC Environmental Monitor (EM): Jody Fessler was on site May 28th.

CPUC NTPs

E-P Potrero Switchyard Site Preparation

NTP #1 was issued on August 21, 2014 for the site preparation of the Potrero Switchyard on 23rd Street adjacent to the existing Potrero Substation on the corner of 23rd Street and Illinois Street in San Francisco. NTP #1 included conditions that had to be satisfied prior to the start of construction.

Summary of Activity:

1. Overaa conducted housekeeping and dust control activities Tuesday and Wednesday.
2. Proven excavated for cable and grounding rod installation on Tuesday.
3. At the time of the CPUC EM site visit on May 28th, no work was being conducted at the switchyard other than office trailer use and one electrician working on site (see Figure 1).
4. No construction activities occurred Monday, Saturday or Sunday.

Environmental Compliance:

1. Cultural monitoring was conducted by Far Western on Tuesday.
2. Air quality monitoring was conducted by ERM Tuesday through Thursday.
3. PG&E's Environmental Inspector conducted monitoring of this area Tuesday through Friday, including SWPPP inspections.
4. Nesting bird sweeps were conducted Tuesday through Friday.
5. PG&E's Environmental Inspectors noted no compliance issues at this location.
6. The CPUC EM noted that the site was neat and clean and that SWPPP measures were in place. All observed work activities were in compliance with the mitigation measures (MMs), Applicant Proposed Measures (APMs), and other permit requirements.

E-P Horizontal Directional Drill (HDD) Construction

NTP #2 was issued on August 28, 2014 for the HDD Construction on Spear Street, at the northern end of the project, and 23rd Street, at the southern end of the project, in San Francisco. Both HDDs would terminate within the San Francisco Bay and will be tied together in the future via a subsea cable. NTP #2 included conditions that had to be satisfied prior to the start of construction, as well as prior to the start of any work in the Bay.

Summary of Activity at the Northern Bore (Spear Street):

1. The HDD work is complete and HDD Company demobilized from the site during Week #26.

Summary of Activity at the Southern Bore (23rd Street):

1. The HD work is complete and HDD Company demobilized from the site during Week #26.

E-P Underground Duct Bank Construction

NTP #3 was issued on October 9, 2014 for the underground duct bank and vault installation component of the Embarcadero-Potrero 230 kV Transmission Project between the horizontal directional drill (HDD) transition on Spear Street to the Embarcadero Substation on Folsom Street in the northern section, and between the HDD transition on 23rd Street to the Potrero Switchyard in the southern section, in the City of San Francisco. NTP #3 included conditions that had to be satisfied prior to the start of construction.

Summary of Activity for the Duct Bank North (Folsom St. and Spear St.):

Folsom Street, Night Work

1. Underground Construction Co. ground the inside of the HDPE conduit on Tuesday.
2. Underground Construction Co. installed rock in excavations on Tuesday.
3. Underground Construction Co. installed rebar, conduit, and spacers in the HDPE conduit on Wednesday and Thursday.
4. At the time of the CPUC site visit in the afternoon of May 28th, no work was taking place on Folsom Street.
5. Street sweeping occurred Tuesday through Friday.
6. No construction activities occurred Monday, Saturday or Sunday.

Spear Street, Duct Bank (between Folsom St and Harrison St)

1. Underground Construction Co. excavated the duct bank trench Tuesday through Friday.
2. PSC dewatered the duct bank trench Tuesday through Friday.
3. Underground Construction Co. saw-cut pavement Tuesday and Wednesday, and removed pavement on Wednesday.
4. Underground Construction Co. installed HDPE conduit on Friday.
5. Clean Harbors hauled off excavated material and pavement for disposal Tuesday through Friday.
6. Street sweeping occurred Tuesday through Friday.
7. At the time of the CPUC EM site visit on May 28th, crews were installing ground rods on the south-east side of the vault and excavating trench on the northwest side of the vault (see Figures 2 and 3).
8. No construction activities occurred on Monday, Saturday or Sunday.

Spear Street, Duct Bank (between Harrison St and cul-de-sac)

1. Underground Construction Co. conducted minor trenching on Thursday.
2. Underground Construction Co. conducted housekeeping and cleanup activities on Thursday.
3. At the time of the CPUC EM site visit on May 28th, no work was occurring at the Spear Street duct bank between Harrison and cul-de-sac.
4. No construction activities occurred on Monday, Saturday or Sunday.

Spear Street, Vault

1. Annuzzi conducted curb and gutter restoration on Friday.
2. At the time of the CPUC EM site visit on May 28th, no work was being conducted at the vault.

Environmental Compliance:

1. Cultural monitoring was conducted Tuesday through Friday. On May 27th and 28th, cultural constituents were observed and documented.
2. PG&E's Environmental Inspector conducted monitoring of the work area and activities Tuesday through Friday, including SWPPP inspections.
3. Nesting bird sweeps were conducted Tuesday through Friday.
4. PG&E's Environmental Inspectors noted one compliance issues at this location. On May 27th, the PG&E Environmental Inspector observed water being discharged from an excavation on Spear Street into a drainage inlet (DI) that had not been approved for discharge of project water. The PG&E Environmental Inspector informed the PG&E Inspector, Black & Veatch Inspector, Underground Construction Co. Foreman, and PG&E's Marc Morolla and Gerry Hassler. To rectify the issue, Underground Construction Co. promptly redirected discharged water into the DI on Spear Street that was previously approved for water discharge. Underground Construction Co. and PG&E personnel stated that there had been confusion regarding which DIs had been approved for discharge. It was clarified to construction personnel which DIs are approved for discharge.
5. The CPUC EM noted that the site was neat and clean and that SWPPP measures were in place. All observed work activities were in compliance with the mitigation measures (MMs), Applicant Proposed Measures (APMs), and other permit requirements.

Summary of Activity for the Duct Bank South (23rd Street):

23rd Street, Duct Bank

1. Underground Construction Co. backfilled the duct bank trench on Tuesday.
2. Underground Construction Co. excavated the duct bank trench on Friday.
3. Clean Harbors hauled off excavated materials Wednesday and Friday.
4. Street sweeping occurred Tuesday through Friday.
5. Fencing was installed around the open trench at the end of each day.
6. At the time of the CPUC EM site visit on May 28th, no work was being conducted for the duct bank.
7. No construction activities occurred on Monday, Saturday, or Sunday.

23rd Street, Vault

1. Underground Construction Co. cleaned the inside of the vault on Thursday.
2. At the time of the CPUC site visit on May 28th, a crew was cleaning the inside of the vault (see Figure 4).

23rd Street, Water Line Relocation

1. Underground Construction Co. saw cut and removed pavement on Tuesday.
2. Underground Construction Co. excavated on Tuesday and Wednesday.
3. At the time of the CPUC site visit on May 28th, a crew was marking underground electrical distribution lines for the City of San Francisco tie-in to waterline at the intersection of 23rd Street and Illinois.

Environmental Compliance:

1. Cultural monitoring was conducted by Far Western on Tuesday, Wednesday, and Friday. On May 27th and 29th, cultural constituents were observed, documented, and some collected.
2. Air quality monitoring was conducted by ERM Tuesday through Friday.
3. PG&E's Environmental Inspector conducted monitoring of the work area and activities on Tuesday through Friday, including SWPPP inspections.
4. Nesting bird sweeps were conducted Tuesday through Friday.
5. PG&E's Environmental Inspectors noted no compliance issues at this location.
6. The CPUC EM noted that the site was neat and clean and that SWPPP measures were in place. All observed work activities were in compliance with the mitigation measures (MMs), Applicant Proposed Measures (APMs), and other permit requirements.

E-P Submarine Rock and Debris Removal

NTP #4 was issued on November 21, 2014 for the rock removal obstructing the path of the submarine cable component of the Embarcadero-Potrero 230 kV Transmission Project along the submarine cable line and off shore of Pier 50 in the San Francisco Bay. NTP #4 included conditions that had to be satisfied prior to the start of construction.

Summary of Activity:

1. No construction activity related to NTP #4 occurred during the subject week. Manson crews completed rock and debris removal during Week #14, except for several debris items that were too near the north end exit pits and the HDD work. These few items will be removed when the submarine cable installation begins in June 2015.

Environmental Compliance:

1. No compliance monitoring was conducted during the subject week.

E-P Potrero GIS Building and Cable Tie-in

NTP #5 was issued on March 27, 2015 for construction of the 230 kV Potrero gas-insulated switchgear (GIS) building and cable tie-in component of the Embarcadero-Potrero 230 kV Transmission Project at the Potrero Switchyard site, in the City San Francisco. NTP #5 included conditions that had to be satisfied prior to the start of construction.

Summary of Activity:

1. No construction activity related to NTP #5 occurred during the subject week; however, the building permits from the City of San Francisco were received by PG&E on June 9, 2015.

Environmental Compliance:

1. No compliance monitoring was conducted during the subject week.

E-P Submarine Cable Installation

NTP #6 was issued on April 7, 2015 for the submarine cable installation component of the Embarcadero-Potrero 230 kV Transmission Project in the San Francisco Bay. NTP #6 included conditions that had to be satisfied prior to the start of construction.

Summary of Activity:

1. Fish screen testing was conducted on May 20, 2015 and was successful with the velocity parameter met (less than 0.2 ft/s). Results will be submitted to CDFW for approval.
2. Testing of barge equipment is ongoing.
3. No other construction activity related to NTP #6 occurred during the subject week.
4. A barge tour is scheduled for June 10 at Pier 50.

Environmental Compliance:

5. No compliance monitoring was conducted during the subject week.

Amador Staging and Laydown Yard

A Minor Project Change #1 was issued on July 23, 2014 for the use of the Amador Staging and Laydown Yard on Amador Street, San Francisco. The Minor Project Change #1 included conditions that had to be satisfied prior to the staging of equipment and materials at the yard.

Summary of Activity:

1. Office trailer use occurred Tuesday through Friday at the yard.
2. Tailboard meetings occurred at the yard Tuesday through Friday.
3. Equipment and materials were stored at the yard throughout the week.
4. At the time of the CPUC site visit on May 28th, equipment and materials were being stored at the yard and the office trailers were in use.
5. No work occurred at the yard on Monday, Saturday or Sunday.

Environmental Compliance:

1. PG&E's Environmental Inspector conducted monitoring of the work area and activities Tuesday through Friday, including SWPPP inspections.
2. Nesting bird sweeps were conducted Tuesday through Friday.
3. PG&E's Environmental Inspectors noted no compliance issues at this location.
4. The CPUC EM noted that the site was neat and clean and that SWPPP measures were in place. All observed work activities were in compliance with the mitigation measures (MMs), Applicant Proposed Measures (APMs), and other permit requirements.

Notices to Proceed

Table 1 summarizes the Notices to Proceed (NTP) for the Embarcadero-Potrero Project.

Table 1
Notice to Proceeds (NTPs)
(Updated 06/09/15)

NTP #	Date Requested	Date Issued	Phase	Description
NTP #1	6/23/14	8/21/14	Potrero Site Preparation	Site preparation and excavation of the 230 kV Potrero Switchyard site on 23 rd St., SF.
NTP #2	7/31/14	8/28/14	HDD	Horizontal directional drilling on Spear St. and 23 rd St. connecting to the SF Bay.
NTP #3	9/18/14	10/09/14	Underground Duct Bank and Vaults	Underground duct bank and vault installation between the HDD transition on Spear St. to the Embarcadero Substation on Folsom St. in the northern section, and between the HDD transition on 23 rd St. to the Potrero Switchyard in the southern section, SF.
NTP #3 MOD	11/13/14	11/14/14	Underground Duct Bank and Vaults	Trench from the new Potrero Switchyard to the existing switchyard for the 230kV/115kV connections across the Trans Bay Cable.
NTP #4	11/19/14	11/21/14	Subsea Cable	Rock and debris removal along subsea cable route.
NTP #5	2/19/15	3/27/15	Potrero GIS Switchgear Building	Construction of 230 kV Potrero gas-insulated switchgear (GIS) building and cable tie-in component at Potrero Switchyard.
NTP #6	2/19/15	4/07/15	Submarine Cable	Site preparation for submarine cable installation, laying the cable, and pulling the cable to land at either end.

Minor Project Changes

Table 2 summarizes the Minor Project Changes submitted for the Embarcadero-Potrero Project.

Table 2
Minor Project Changes (MPCs)
(Updated 06/09/15)

MPC #	Date Requested	Date Issued	Phase	Description
MPC #1	7/16/14	7/23/14	Amador Staging and Laydown Yard	Use of an existing staging and laydown yard adjacent to Alternate Staging Area #3 (as identified in the IS/MND) on Amador St., SF.
MPC #2	12/31/14	1/5/15	Staging and Laydown Yard	Use of an existing paved staging and laydown yard at 1215 Michigan Street, SF, two blocks from the Potrero Switchyard.

PROJECT PHOTOS



Figure 1 – Potrero Switchyard. View southeast, May 28, 2015.

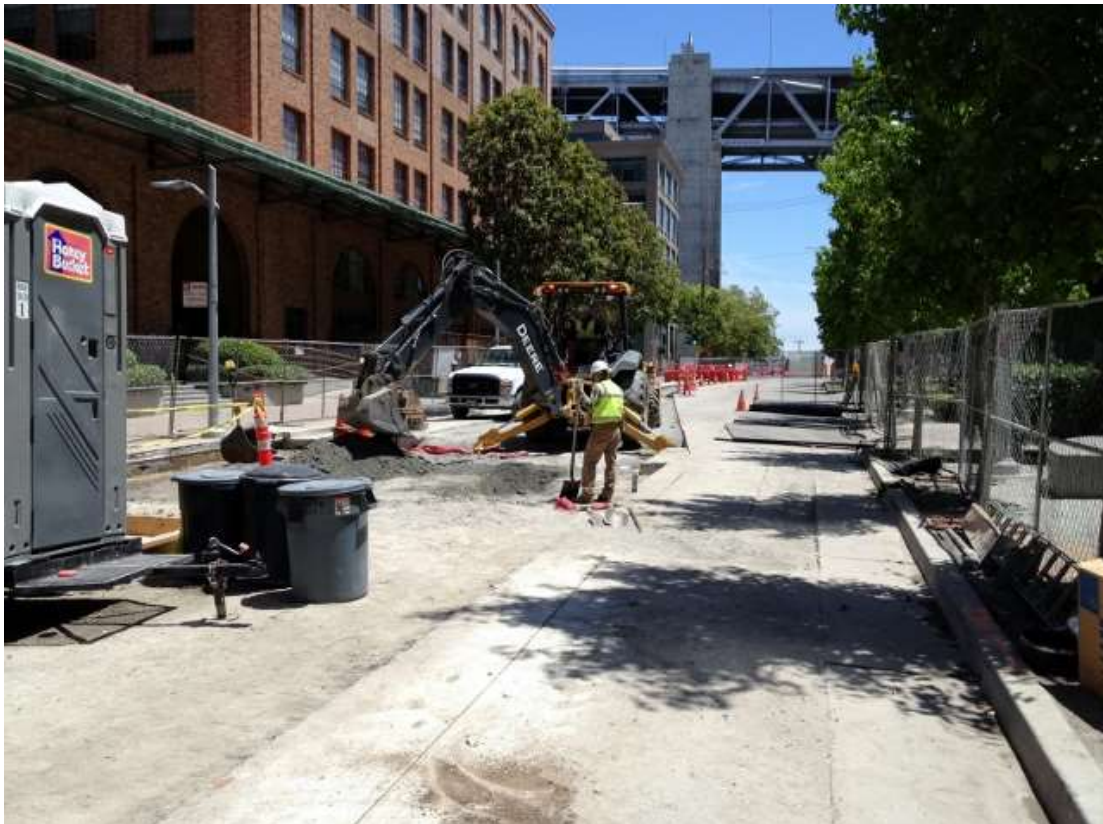


Figure 2 – Installing ground rods on Spear Street. View east, May 28, 2015.



Figure 3 – Excavating duct bank trench on Spear Street. View northwest, May 28, 2015.



Figure 4 – Cleaning vault on 23rd St. View east, May 28, 2015.