



5020 Chesebro Road, Suite 200, Agoura Hills, CA 91301-2285  
Tel. 818-597-3407, Fax 818-597-8001, www.aspeneg.com

**PROJECT MEMORANDUM**

**PG&E EMBARCADERO-POTRERO 230 kV TRANSMISSION PROJECT**

**To:** Billie Blanchard, Project Manager, CPUC  
**From:** Vida Strong, Aspen Project Manager  
**Date:** June 24, 2015  
**Subject:** Monitoring Report #40 – June 15 to June 21, 2015

This report provides a summary of the construction and compliance activities associated with the PG&E Embarcadero-Potrero (E-P) 230 kV Transmission Project.

A summary of the Notices to Proceed (NTPs) for construction and Minor Project Change (MPC) activities are provided in Tables 1 and 2, respectively (below).

**CPUC Environmental Monitor (EM):** Jody Fessler was on site June 16<sup>th</sup>.

## **CPUC NTPs**

### **E-P Potrero Switchyard Site Preparation**

NTP #1 was issued on August 21, 2014 for the site preparation of the Potrero Switchyard on 23<sup>rd</sup> Street adjacent to the existing Potrero Substation on the corner of 23<sup>rd</sup> Street and Illinois Street in San Francisco. NTP #1 included conditions that had to be satisfied prior to the start of construction.

#### **Summary of Activity:**

1. Overaa conducted housekeeping and dust control activities on Monday and Friday.
2. Proven conducted backfilling on Monday and Tuesday.
3. Proven conducted base rock spreading/grading Wednesday through Friday.
4. At the time of the CPUC EM site visit on June 16<sup>th</sup>, no work was being conducted at the switchyard other than office trailer use. The spreading and laying of gravel occurred earlier in the day (see Figure 1).
5. No construction activities occurred Saturday or Sunday.

#### **Environmental Compliance:**

1. Air quality monitoring was conducted by ERM on Monday and Friday.
2. PG&E's Environmental Inspector conducted monitoring of this area Monday through Friday, including SWPPP inspections.
3. Nesting bird sweeps were conducted Monday through Friday.
4. PG&E's Environmental Inspectors noted no compliance issues at this location.
5. The CPUC EM noted that the site was neat and clean and that SWPPP measures were in place. All observed work activities were in compliance with the mitigation measures (MMs), Applicant Proposed Measures (APMs), and other permit requirements.

## **E-P Horizontal Directional Drill (HDD) Construction**

NTP #2 was issued on August 28, 2014 for the HDD Construction on Spear Street, at the northern end of the project, and 23<sup>rd</sup> Street, at the southern end of the project, in San Francisco. Both HDDs would terminate within the San Francisco Bay and will be tied together in the future via a subsea cable. NTP #2 included conditions that had to be satisfied prior to the start of construction, as well as prior to the start of any work in the Bay.

### **Summary of Activity at the Northern Bore (Spear Street):**

1. The HDD work is complete and HDD Company demobilized from the site during Week #26.

### **Summary of Activity at the Southern Bore (23<sup>rd</sup> Street):**

1. The HDD work is complete and HDD Company demobilized from the site during Week #26.

## **E-P Underground Duct Bank Construction**

NTP #3 was issued on October 9, 2014 for the underground duct bank and vault installation component of the Embarcadero-Potrero 230 kV Transmission Project between the horizontal directional drill (HDD) transition on Spear Street to the Embarcadero Substation on Folsom Street in the northern section, and between the HDD transition on 23<sup>rd</sup> Street to the Potrero Switchyard in the southern section, in the City of San Francisco. NTP #3 included conditions that had to be satisfied prior to the start of construction.

### **Summary of Activity for the Duct Bank North (Folsom St. and Spear St.):**

#### **Folsom Street, Duct Bank (night work)**

1. Underground Construction Co. conducted hand excavation on Monday.
2. Underground Construction Co. conducted potholing on Tuesday.
3. At the time of the CPUC site visit during the daytime of June 16<sup>th</sup>, no work was taking place on Folsom Street where night work has been taking place.
4. Street sweeping occurred Monday through Friday.
5. No construction activities occurred on Saturday or Sunday.

#### **Folsom Street, Duct Bank (day work)**

1. Underground Construction Co. excavated the duct bank on Monday and Friday.
2. Underground Construction Co. conducted sheet pile installation Tuesday through Thursday.
3. Underground Construction Co. saw-cut and removed pavement on Thursday.
4. Underground Construction Co. potholed for utilities Thursday and Friday.
5. Underground Construction Co. installed shoring on Friday.
6. At the time of the CPUC EM site visit on June 16<sup>th</sup>, crews were working on Folsom Street between Beale Street and Main Street driving sheet piles for shoring (see Figure 2).

#### **Spear Street, Duct Bank (between Folsom St and Harrison St)**

1. Underground Construction Co. excavated the duct bank trench Monday through Friday.
2. Underground Construction Co. conducted sheet pile installation on Thursday.

3. PSC dewatered the duct bank trench Monday through Friday.
4. Clean Harbors hauled off excavated material and pavement for disposal Monday through Friday.
5. Street sweeping occurred Monday through Friday.
6. At the time of the CPUC EM site visit on June 16<sup>th</sup>, crews were using a chipping hammer in trench to chip away the serpentine rock (see Figure 3) and excavating the duct bank trench between the vault and Folsom St.
7. No construction activities occurred on Saturday or Sunday.

**Spear Street, Duct Bank (between Harrison St and cul-de-sac)**

1. Paving and repainting the street has been completed, and the street has been opened back up to the public.

**Spear Street, Vault**

1. No work throughout the week.

**Environmental Compliance:**

1. Cultural monitoring was conducted by Far Western Monday through Friday. Cultural constituents were observed and documented, but not collected, June 15<sup>th</sup> through June 19<sup>th</sup>.
2. PG&E's Environmental Inspector conducted monitoring of the work area and activities Monday through Friday, including SWPPP inspections.
3. Nesting bird sweeps were conducted Monday through Friday.
4. PG&E's Environmental Inspectors noted no compliance issues at this location.
5. The CPUC EM noted that the site was neat and clean and that SWPPP measures were in place. All observed work activities were in compliance with the mitigation measures (MMs), Applicant Proposed Measures (APMs), and other permit requirements.

**Summary of Activity for the Duct Bank South (23<sup>rd</sup> Street):**

**23<sup>rd</sup> Street, Duct Bank**

1. Underground Construction Co. excavated the duct bank trench Monday through Friday.
2. Underground Construction Co. installed shoring in duct bank trench installed rebar on Monday.
3. Underground Construction Co. backfilled the duct bank trench with concrete on Monday, Tuesday and Friday.
4. Underground Construction Co. installed HDPE conduit in the duct bank trench Tuesday through Thursday.
5. Clean Harbors hauled off excavated materials Monday through Friday.
6. Street sweeping occurred Monday through Friday.
7. Fencing was installed around the open trench at the end of each day.
8. At the time of the CPUC EM site visit on June 16<sup>th</sup>, crews were excavating the duct bank trench (see Figure 4) and backfilling with cement.
9. No construction activities occurred Saturday or Sunday.

### **23<sup>rd</sup> Street, Vault**

1. No construction activities occurred at the vault throughout the week.

### **23<sup>rd</sup> Street, Water Line Relocation**

1. No construction activities occurred at the vault throughout the week.

#### **Environmental Compliance:**

1. Cultural monitoring was conducted by Far Western Monday through Friday. Cultural constituents were observed and documented, but not collected, June 15<sup>th</sup> through June 19<sup>th</sup>.
2. Air quality monitoring was conducted by ERM Monday through Friday.
3. PG&E's Environmental Inspector conducted monitoring of the work area and activities on Monday through Friday, including SWPPP inspections.
4. Nesting bird sweeps were conducted Monday through Friday.
5. PG&E's Environmental Inspectors noted no compliance issues at this location.
6. The CPUC EM noted that the site was neat and clean and that SWPPP measures were in place. All observed work activities were in compliance with the mitigation measures (MMs), Applicant Proposed Measures (APMs), and other permit requirements.

### **E-P Submarine Rock and Debris Removal**

NTP #4 was issued on November 21, 2014 for the rock removal obstructing the path of the submarine cable component of the Embarcadero-Potrero 230 kV Transmission Project along the submarine cable line and off shore of Pier 50 in the San Francisco Bay. NTP #4 included conditions that had to be satisfied prior to the start of construction.

#### **Summary of Activity:**

1. No work activities related to NTP #4 were conducted during the week.

#### **Environmental Compliance:**

1. No compliance monitoring was conducted.

### **E-P Potrero GIS Building and Cable Tie-in**

NTP #5 was issued on March 27, 2015 for construction of the 230 kV Potrero gas-insulated switchgear (GIS) building and cable tie-in component of the Embarcadero-Potrero 230 kV Transmission Project at the Potrero Switchyard site, in the City San Francisco. NTP #5 included conditions that had to be satisfied prior to the start of construction.

#### **Summary of Activity:**

1. Overaa conducted housekeeping activities on Monday and Friday.
2. Proven conducted backfilling on Monday and Tuesday.
3. Proven conducted base rock spreading/grading Wednesday through Friday.
4. At the time of the CPUC EM site visit on June 16<sup>th</sup>, no work was being conducted at the switchyard other than office trailer use. The spreading and laying of gravel occurred earlier in the day.
5. No construction activities occurred Saturday or Sunday.

**Environmental Compliance:**

1. Air quality monitoring was conducted by ERM on Monday and Friday.
2. PG&E's Environmental Inspector conducted monitoring of this area Monday through Friday, including SWPPP inspections.
3. Nesting bird sweeps were conducted Monday through Friday.
4. PG&E's Environmental Inspectors noted no compliance issues at this location.
5. The CPUC EM noted that the site was neat and clean and that SWPPP measures were in place. All observed work activities were in compliance with the mitigation measures (MMs), Applicant Proposed Measures (APMs), and other permit requirements. No compliance monitoring was conducted during the subject week.

**E-P Submarine Cable Installation**

NTP #6 was issued on April 7, 2015 for the submarine cable installation component of the Embarcadero-Potrero 230 kV Transmission Project in the San Francisco Bay. NTP #6 included conditions that had to be satisfied prior to the start of construction.

**Summary of Activity:**

1. Durocher conducted pre-lay grapnel runs on Thursday and Friday.
2. Durocher conducted diving operations at the South Bore #2 and #3 conduits on Thursday and Friday.
3. Durocher conducted diving operations at the North Bore #3 conduit on Saturday and Sunday.
4. No in-water-work activities were conducted Monday through Wednesday.

**Environmental Compliance:**

1. PG&E's Environmental Inspectors noted no compliance issues at this location.

**Amador Staging and Laydown Yard**

A Minor Project Change #1 was issued on July 23, 2014 for the use of the Amador Staging and Laydown Yard on Amador Street, San Francisco. The Minor Project Change #1 included conditions that had to be satisfied prior to the staging of equipment and materials at the yard.

**Summary of Activity:**

1. Office trailer use occurred Monday through Friday at the yard.
2. Tailboard meetings occurred at the yard Monday through Friday.
3. Equipment and materials were stored at the yard throughout the week.
4. At the time of the CPUC site visit on June 16<sup>th</sup>, equipment and materials were being stored at the yard and the office trailers were in use.
5. No work occurred at the yard on Saturday or Sunday.

**Environmental Compliance:**

1. PG&E's Environmental Inspector conducted monitoring of the work area and activities Monday through Friday, including SWPPP inspections.
2. Nesting bird sweeps were conducted Monday through Friday.

3. PG&E's Environmental Inspectors noted one compliance issues at this location. On June 16<sup>th</sup>, two full garbage cans without lids were observed adjacent to the porta-potties in the Amador Yard. Trash was observed around the trash cans, likely scattered by wind. The full trash cans had been observed on Friday, June 12<sup>th</sup>, and it was recommended that they be emptied. On June 17<sup>th</sup>, it was observed that the trash cans had been emptied.
4. At the time of the CPUC EM site visit, the trash cans had already been emptied. The CPUC EM noted that the site was neat and clean and that SWPPP measures were in place. All observed work activities were in compliance with the mitigation measures (MMs), Applicant Proposed Measures (APMs), and other permit requirements.

## Notices to Proceed

Table 1 summarizes the Notices to Proceed (NTP) for the Embarcadero-Potrero Project.

**Table 1**  
**Notice to Proceeds (NTPs)**  
 (Updated 06/24/15)

| NTP #      | Date Requested | Date Issued | Phase                            | Description   |
|------------|----------------|-------------|----------------------------------|---|
| NTP #1     | 6/23/14        | 8/21/14     | Potrero Site Preparation         | Site preparation and excavation of the 230 kV Potrero Switchyard site on 23 <sup>rd</sup> St., SF.  |
| NTP #2     | 7/31/14        | 8/28/14     | HDD                              | Horizontal directional drilling on Spear St. and 23 <sup>rd</sup> St. connecting to the SF Bay.   |
| NTP #3     | 9/18/14        | 10/09/14    | Underground Duct Bank and Vaults | Underground duct bank and vault installation between the HDD transition on Spear St. to the Embarcadero Substation on Folsom St. in the northern section, and between the HDD transition on 23 <sup>rd</sup> St. to the Potrero Switchyard in the southern section, SF. |
| NTP #3 MOD | 11/13/14       | 11/14/14    | Underground Duct Bank and Vaults | Trench from the new Potrero Switchyard to the existing switchyard for the 230 kV/115 kV connections across the Trans Bay Cable.   |
| NTP #4     | 11/19/14       | 11/21/14    | Subsea Cable                     | Rock and debris removal along subsea cable route.   |
| NTP #5     | 2/19/15        | 3/27/15     | Potrero GIS Switchgear Building  | Construction of 230 kV Potrero gas-insulated switchgear (GIS) building and cable tie-in component at Potrero Switchyard.  |
| NTP #6     | 2/19/15        | 4/07/15     | Submarine Cable                  | Site preparation for submarine cable installation, laying the cable, and pulling the cable to land at either end.   |

## Minor Project Changes

Table 2 summarizes the Minor Project Changes submitted for the Embarcadero-Potrero Project.

**Table 2**  
**Minor Project Changes (MPCs)**  
(Updated 06/24/15)

| <b>MPC #</b> | <b>Date Requested</b> | <b>Date Issued</b> | <b>Phase</b>                    | <b>Description</b>   |
|--------------|-----------------------|--------------------|---------------------------------|--|
| MPC #1       | 7/16/14               | 7/23/14            | Amador Staging and Laydown Yard | Use of an existing staging and laydown yard adjacent to Alternate Staging Area #3 (as identified in the IS/MND) on Amador St., SF. |
| MPC #2       | 12/31/14              | 1/5/15             | Staging and Laydown Yard        | Use of an existing paved staging and laydown yard at 1215 Michigan Street, SF, two blocks from the Potrero Switchyard.             |

## PROJECT PHOTOS



Figure 1 – Potrero Switchyard. View northeast, June 16, 2015.



Figure 2 – Duct Bank North shoring on Folsom Street between Beale Street and Main Street. View northwest, June 16, 2015.





Figure 3 – Chipping away at serpentine rock in trench on Spear Street. View west, June 16, 2015.

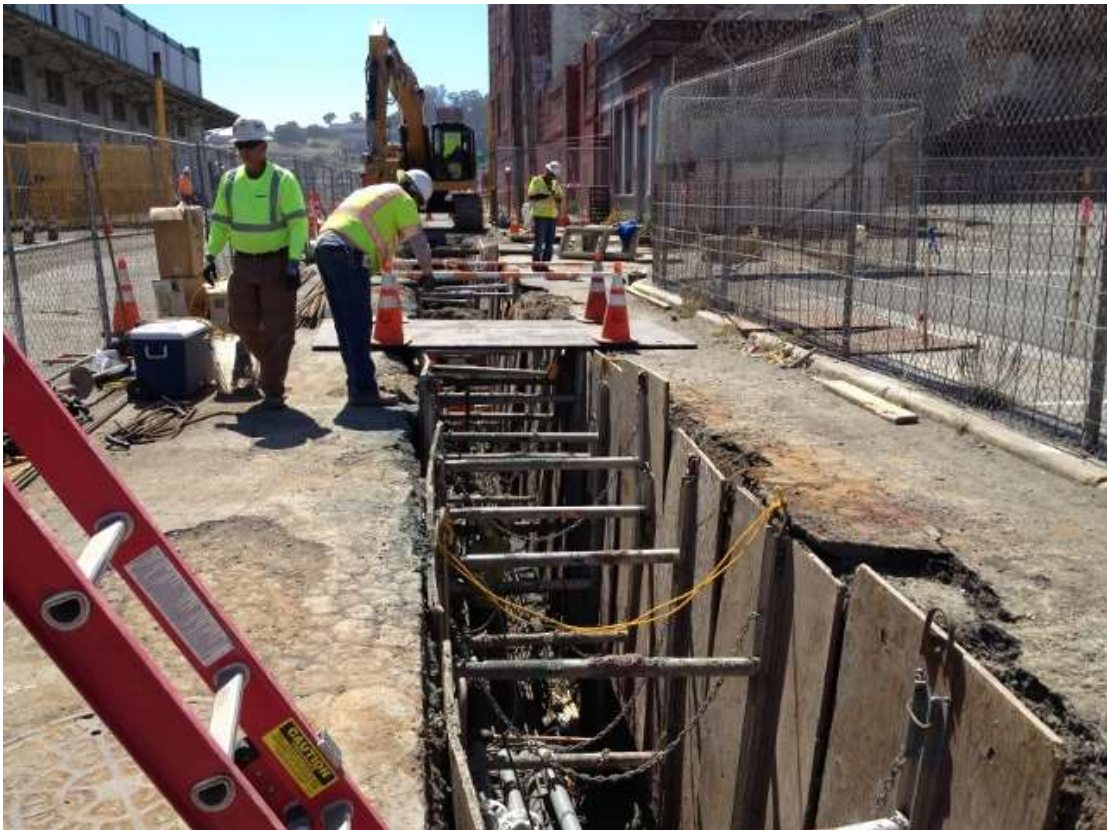


Figure 4 – Excavating duct bank on 23<sup>rd</sup> Street. View west, June 16, 2015.