



5020 Chesebro Road, Suite 200, Agoura Hills, CA 91301-2285  
Tel. 818-597-3407, Fax 818-597-8001, www.aspeneg.com

**PROJECT MEMORANDUM**

**PG&E EMBARCADERO-POTRERO 230 kV TRANSMISSION PROJECT**

**To:** Billie Blanchard, Project Manager, CPUC  
**From:** Vida Strong, Aspen Project Manager  
**Date:** September 30, 2015  
**Subject:** Monitoring Report #54 – September 21 to September 27, 2015

This report provides a summary of the construction and compliance activities associated with the PG&E Embarcadero-Potrero (E-P) 230 kV Transmission Project.

A summary of the Notices to Proceed (NTPs) for construction and Minor Project Change (MPC) activities are provided in Tables 1 and 2, respectively (below).

**CPUC Environmental Monitor (EM):** Jody Fessler was on site September 22<sup>nd</sup>.

## **CPUC NTPs**

### **E-P Potrero Switchyard Site Preparation**

NTP #1 was issued on August 21, 2014 for the site preparation of the Potrero Switchyard on 23<sup>rd</sup> Street adjacent to the existing Potrero Substation on the corner of 23<sup>rd</sup> Street and Illinois Street in San Francisco. NTP #1 included conditions that had to be satisfied prior to the start of construction.

#### **Summary of Activity:**

1. Site preparation activities have been completed and all work is now being conducted for the GIS building and cable tie-in work approved by the CPUC under NTP #5 (see below).

#### **Environmental Compliance:**

1. All environmental compliance monitoring will be reported below for the GIS building and cable tie-in work.

### **E-P Horizontal Directional Drill (HDD) Construction**

NTP #2 was issued on August 28, 2014 for the HDD Construction on Spear Street, at the northern end of the project, and 23<sup>rd</sup> Street, at the southern end of the project, in San Francisco. Both HDDs would terminate within the San Francisco Bay and will be tied together in the future via a subsea cable. NTP #2 included conditions that had to be satisfied prior to the start of construction, as well as prior to the start of any work in the Bay.

#### **Summary of Activity at the Northern Bore (Spear Street):**

1. The HDD work is complete and HDD Company demobilized from the site during Week #26.

#### **Summary of Activity at the Southern Bore (23<sup>rd</sup> Street):**

1. The HDD work is complete and HDD Company demobilized from the site during Week #26.

## **E-P Underground Duct Bank Construction**

NTP #3 was issued on October 9, 2014 for the underground duct bank and vault installation component of the Embarcadero-Potrero 230 kV Transmission Project between the horizontal directional drill (HDD) transition on Spear Street to the Embarcadero Substation on Folsom Street in the northern section, and between the HDD transition on 23<sup>rd</sup> Street to the Potrero Switchyard in the southern section, in the City of San Francisco. NTP #3 included conditions that had to be satisfied prior to the start of construction.

### **Summary of Activity for the Duct Bank North (Folsom St. and Spear St.):**

#### **Folsom Street, Duct Bank (day work)**

##### **1<sup>st</sup> Street and Fremont Street**

1. Underground Construction Co. excavated duct bank trench between 1<sup>st</sup> Street and Fremont Street Monday through Saturday.
2. Underground Construction Co. installed shoring in the duct bank trench between 1<sup>st</sup> Street and Fremont Street Monday through Wednesday and Saturday, and potholed for utilities Monday and Wednesday.
3. Underground Construction Co. removed a wood panel related to the Embarcadero Substation between 1<sup>st</sup> Street and Fremont Street on Wednesday.
4. A PG&E crew was onsite repairing the 12 kV utility line break Tuesday through Thursday.
5. At the time of the CPUC EM site visit on September 22<sup>nd</sup>, PG&E, BVCI and Underground Construction Co. were assessing the damage that had taken place just prior from the 12 kV line break (see Figure 1).

##### **Fremont and Beale Streets**

6. Underground Construction Co. jackhammered and removed pavement between Fremont and Beale Streets on Monday.
7. Underground Construction Co. excavated duct bank trench between Fremont and Beale Streets Monday through Thursday.
8. Underground Construction paved between Fremont and Beale Streets on Tuesday.
9. Underground Construction Co. added base rock in the duct bank trench between Fremont and Beale Streets on Wednesday.
10. Underground Construction Co. installed and tied rebar between Fremont and Beale Streets Wednesday through Saturday.
11. Underground Construction Co. installed conduit pipe between Fremont and Beale Streets on Friday.
12. At the time of the CPUC EM site visit on September 22<sup>nd</sup>, a crew was excavating the duct bank trench between Fremont and Beale Streets (see Figure 2).

##### **Beale and Main Streets**

13. Underground Construction Co. excavated duct bank trench between Beale and Main Streets Monday through Thursday.
14. Underground Construction Co. installed shoring between Beale and Main Streets Monday through Thursday.
15. Underground Construction Co. cut and removed pipe in the duct bank trench between Beale and Main Streets on Tuesday.

16. Underground Construction Co. potholed for utilities between Beale and Main Streets on Tuesday and Saturday.
17. Underground Construction Co. backfilled with concrete between Beale and Main Streets on Wednesday.
18. Underground Construction Co. added base rock in the duct bank trench and installed conduit pipe between Beale and Main Streets on Friday.
19. Underground Construction Co. installed rebar between Beale and Main Streets on Friday and Saturday.
20. At the time of the CPUC EM site visit on September 22<sup>nd</sup>, a crew was excavating the duct bank trench between Beale and Main Streets (see Figure 3).

**Main and Spear Streets**

21. No construction activities occurred between Main and Spear Streets during the week.

**Spear Street, Duct Bank (between Folsom St and Harrison St)**

1. Spear Street has been paved and temporary striping applied.

**Spear Street, Vault**

1. No work occurred at the vault during the week.

**Environmental Compliance:**

1. Cultural monitoring was conducted by Far Western Monday through Saturday. On September 21<sup>st</sup>, 23<sup>rd</sup>, 24<sup>th</sup>, and 26<sup>th</sup>, cultural constituents were observed, documented, and some collected.
2. PG&E's Environmental Inspector conducted monitoring of the work area and activities on Monday through Saturday, including SWPPP inspections.
3. PG&E's Environmental Inspectors noted no compliance issues at this location.
4. The CPUC EM noted that the site was neat and clean, and that SWPPP measures were in place. All observed work activities were in compliance with the mitigation measures (MMs), Applicant Proposed Measures (APMs), and other permit requirements.

**Summary of Activity for the Duct Bank South (23<sup>rd</sup> Street):**

**23<sup>rd</sup> Street, Duct Bank**

1. Underground Construction Co. excavated the duct bank trench and installed shoring Monday through Thursday.
2. Underground Construction Co. removed old pipe on Monday, Wednesday and Thursday.
3. Underground Construction Co. installed rebar in the duct bank trench on Thursday and Friday.
4. Underground Construction Co. added base rock in the duct bank trench on Thursday and installed conduit pipe on Friday.
5. PSC dewatered old utility pipe on Wednesday and Thursday.
6. Clean Harbors hauled off excavated material for disposal Monday through Thursday.
7. Street sweeping was conducted Monday through Friday.
8. At the time of the CPUC EM site visit on September 22<sup>nd</sup>, a crew was excavating the duct bank trench (see Figure 4).
9. No construction activities occurred on Saturday or Sunday.

## **23<sup>rd</sup> Street, Vault**

1. No work was conducted in the vault during the week.

### **Environmental Compliance:**

1. Cultural monitoring was conducted by Far Western Monday through Thursday. September 21<sup>st</sup> through 24<sup>th</sup>, cultural constituents were observed and documented.
2. Air quality monitoring was conducted by ERM on Monday through Friday.
3. PG&E's Environmental Inspector conducted monitoring of the work area and activities on Monday through Friday, including SWPPP inspections.
4. PG&E's Environmental Inspectors noted no compliance issues at this location.
5. The CPUC EM noted that the site was neat and clean, and that SWPPP measures were in place. All observed work activities were in compliance with the mitigation measures (MMs), Applicant Proposed Measures (APMs), and other permit requirements.

## **E-P Submarine Rock and Debris Removal**

NTP #4 was issued on November 21, 2014 for the rock removal obstructing the path of the submarine cable component of the Embarcadero-Potrero 230 kV Transmission Project along the submarine cable line and off shore of Pier 50 in the San Francisco Bay. NTP #4 included conditions that had to be satisfied prior to the start of construction.

### **Summary of Activity:**

1. All work activities related to NTP #4 have been completed.

### **Environmental Compliance:**

1. No compliance monitoring was conducted.

## **E-P Potrero GIS Building and Cable Tie-in**

NTP #5 was issued on March 27, 2015 for construction of the 230 kV Potrero gas-insulated switchgear (GIS) building and cable tie-in component of the Embarcadero-Potrero 230 kV Transmission Project at the Potrero Switchyard site, in the City San Francisco. NTP #5 included conditions that had to be satisfied prior to the start of construction.

### **Summary of Activity:**

1. Overaa unloaded and staged delivered materials on Wednesday.
2. Overaa conducted dust control activities on Wednesday.
3. PSC delivered water for filtration and disposal Wednesday through Friday.
4. BTM GEM FORE delivered and staged sheet metal materials on Friday.
5. Office trailer use occurred Monday through Friday.
6. At the time of the CPUC EM site visit on September 22<sup>nd</sup>, no work activities were taking place.
7. No work activities occurred on Saturday or Sunday.

### **Environmental Compliance:**

1. Air quality monitoring was conducted by ERM on Wednesday and Friday.
2. PG&E's Environmental Inspector conducted monitoring of this area Wednesday through Friday, including SWPPP inspections.
3. PG&E's Environmental Inspectors noted one compliance issue at this location: On September 23<sup>rd</sup>, PSC spilled approximately 2 gallons of oily water onsite that was being delivered from Duct Bank South to the filtration system for disposal. PSC used spill kit materials to clean up the spill and disposed of clean up materials in the hazardous waste disposal bins in the yard. No drainages or drainage inlets were impacted and the oily water did not leave the site.
4. The CPUC EM noted that the site was neat and clean, and that SWPPP measures were in place. All observed work activities were in compliance with the mitigation measures (MMs), Applicant Proposed Measures (APMs), and other permit requirements.

### **E-P Submarine Cable Installation**

NTP #6 was issued on April 7, 2015 for the submarine cable installation component of the Embarcadero-Potrero 230 kV Transmission Project in the San Francisco Bay. NTP #6 included conditions that had to be satisfied prior to the start of construction.

#### **Summary of Activity:**

1. All work activities for the submarine cable installation were completed during Week #50.

### **Amador Staging and Laydown Yard**

A Minor Project Change #1 was issued on July 23, 2014 for the use of the Amador Staging and Laydown Yard on Amador Street, San Francisco. The Minor Project Change #1 included conditions that had to be satisfied prior to the staging of equipment and materials at the yard.

#### **Summary of Activity:**

1. Office trailer use occurred Monday through Saturday at the yard.
2. Tailboard meetings occurred at the yard Monday through Saturday.
3. Equipment and materials were stored at the yard throughout the week.
4. No work occurred at the yard on Sunday.

### **Environmental Compliance:**

1. PG&E's Environmental Inspector conducted monitoring of the work area and activities Monday through Saturday, including SWPPP inspections.
2. PG&E's Environmental Inspectors noted one compliance issue at this location: September 22<sup>nd</sup>-24<sup>th</sup>, a Hertz forklift was observed leaking oil (approximately 1 cup) onto secondary containment plastic visqueen. BVCI and Underground Construction Co. were informed by the PG&E Environmental Inspector. On September 24<sup>th</sup>, the PG&E Environmental Inspector observed that the vehicle was removed from the site and sent back to Hertz, and the oil was cleaned off the visqueen.

## Notices to Proceed

Table 1 summarizes the Notices to Proceed (NTP) for the Embarcadero-Potrero Project.

**Table 1**  
**Notice to Proceeds (NTPs)**  
 (Updated 09/30/15)

<b>NTP #</b>	<b>Date Requested</b>	<b>Date Issued</b>	<b>Phase</b>	<b>Description</b>
NTP #1	6/23/14	8/21/14	Potrero Site Preparation	Site preparation and excavation of the 230 kV Potrero Switchyard site on 23 <sup>rd</sup> St., SF.
NTP #2	7/31/14	8/28/14	HDD	Horizontal directional drilling on Spear St. and 23 <sup>rd</sup> St. connecting to the SF Bay.
NTP #3	9/18/14	10/09/14	Underground Duct Bank and Vaults	Underground duct bank and vault installation between the HDD transition on Spear St. to the Embarcadero Substation on Folsom St. in the northern section, and between the HDD transition on 23 <sup>rd</sup> St. to the Potrero Switchyard in the southern section, SF.
NTP #3 MOD	11/13/14	11/14/14	Underground Duct Bank and Vaults	Trench from the new Potrero Switchyard to the existing switchyard for the 230 kV/115 kV connections across the Trans Bay Cable.
NTP #4	11/19/14	11/21/14	Subsea Cable	Rock and debris removal along subsea cable route.
NTP #5	2/19/15	3/27/15	Potrero GIS Switchgear Building	Construction of 230 kV Potrero gas-insulated switchgear (GIS) building and cable tie-in component at Potrero Switchyard.

## Minor Project Changes

Table 2 summarizes the Minor Project Changes submitted for the Embarcadero-Potrero Project.

**Table 2**  
**Minor Project Changes (MPCs)**  
 (Updated 09/30/15)

<b>MPC #</b>	<b>Date Requested</b>	<b>Date Issued</b>	<b>Phase</b>	<b>Description</b>
MPC #1	7/16/14	7/23/14	Amador Staging and Lay-down Yard	Use of an existing staging and laydown yard adjacent to Alternate Staging Area #3 (as identified in the IS/MND) on Amador St., SF.
MPC #2	12/31/14	1/5/15	Staging and Laydown Yard	Use of an existing paved staging and laydown yard at 1215 Michigan Street, SF, two blocks from the Potrero Switchyard.

## PROJECT PHOTOS



Figure 1 – Location where 12 kV line was hit while excavating duct bank trench on Folsom Street between 1<sup>st</sup> Street and Fremont Street. View southwest, September 22, 2015.



Figure 2 – Excavating on Folsom Street between Fremont and Beale Streets. View northwest, September 22, 2015.



Figure 3 – Excavating on Folsom Street between Beale and Main Streets. View northwest, September 22, 2015.

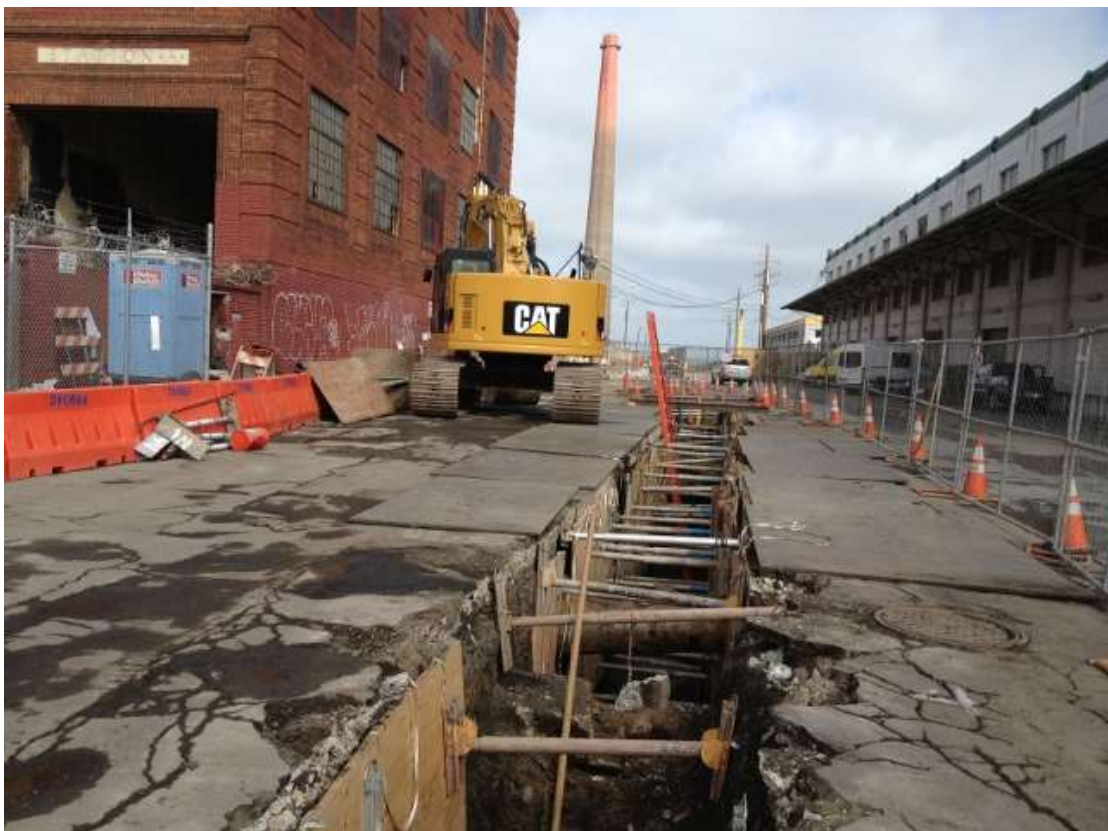


Figure 4 – Excavated on 23<sup>rd</sup> Street. View east, September 22, 2015.