



5020 Chesebro Road, Suite 200, Agoura Hills, CA 91301-2285
Tel. 818-597-3407, Fax 818-597-8001, www.aspeneg.com

PROJECT MEMORANDUM

PG&E EMBARCADERO-POTRERO 230 kV TRANSMISSION PROJECT

To: Billie Blanchard, Project Manager, CPUC
From: Vida Strong, Aspen Project Manager
Date: January 28, 2016
Subject: Monitoring Report #70 – January 18, 2016 to January 24, 2016

This report provides a summary of the construction and compliance activities associated with the PG&E Embarcadero-Potrero (E-P) 230 kV Transmission Project.

A summary of the Notices to Proceed (NTPs) for construction and Minor Project Change (MPC) activities are provided in Tables 1 and 2, respectively (below).

CPUC Environmental Monitor (EM): Jody Fessler

CPUC NTPs

E-P Potrero Switchyard Site Preparation

NTP #1 was issued on August 21, 2014 for the site preparation of the Potrero Switchyard on 23rd Street adjacent to the existing Potrero Substation on the corner of 23rd Street and Illinois Street in San Francisco. NTP #1 included conditions that had to be satisfied prior to the start of construction.

Summary of Activity:

1. Site preparation activities have been completed and all work is now being conducted for the GIS building and cable tie-in work approved by the CPUC under NTP #5 (see below).

Environmental Compliance:

1. All environmental compliance monitoring will be reported below for the GIS building and cable tie-in work.

E-P Horizontal Directional Drill (HDD) Construction

NTP #2 was issued on August 28, 2014 for the HDD Construction on Spear Street, at the northern end of the project, and 23rd Street, at the southern end of the project, in San Francisco. Both HDDs would terminate within the San Francisco Bay and will be tied together in the future via a subsea cable. NTP #2 included conditions that had to be satisfied prior to the start of construction, as well as prior to the start of any work in the Bay.

Summary of Activity at the Northern Bore (Spear Street):

1. The HDD work is complete and HDD Company demobilized from the site during Week #26.

Summary of Activity at the Southern Bore (23rd Street):

1. The HDD work is complete and HDD Company demobilized from the site during Week #26.

E-P Underground Duct Bank Construction

NTP #3 was issued on October 9, 2014 for the underground duct bank and vault installation component of the Embarcadero-Potrero 230 kV Transmission Project between the horizontal directional drill (HDD) transition on Spear Street to the Embarcadero Substation on Folsom Street in the northern section, and between the HDD transition on 23rd Street to the Potrero Switchyard in the southern section, in the City of San Francisco. NTP #3 included conditions that had to be satisfied prior to the start of construction.

Summary of Activity for the Duct Bank North (Folsom St. and Spear St.):

Folsom Street

1. All work activities have been completed at this location.

Spear Street, Duct Bank and Vault (between Folsom St and Harrison St)

1. All work activities have been completed at this location except the pulling of conductor cable, which will be done at a later time.

Environmental Compliance:

1. No monitoring was necessary at this location.

Summary of Activity for the Duct Bank South (23rd Street):

23rd Street, Duct Bank and Vault

1. All work activities have been completed at this location except the pulling of conductor cable, which will be done at a later time.

Environmental Compliance:

1. No monitoring was necessary at this location.

E-P Submarine Rock and Debris Removal

NTP #4 was issued on November 21, 2014 for the rock removal obstructing the path of the submarine cable component of the Embarcadero-Potrero 230 kV Transmission Project along the submarine cable line and off shore of Pier 50 in the San Francisco Bay. NTP #4 included conditions that had to be satisfied prior to the start of construction.

Summary of Activity:

1. All work activities related to NTP #4 have been completed.

Environmental Compliance:

1. No compliance monitoring was conducted.

E-P Potrero GIS Building and Cable Tie-in

NTP #5 was issued on March 27, 2015 for construction of the 230 kV Potrero gas-insulated switchgear (GIS) building and cable tie-in component of the Embarcadero-Potrero 230 kV Transmission Project at the Potrero Switchyard site, in the City San Francisco. NTP #5 included conditions that had to be satisfied prior to the start of construction.

Summary of Activity:

Potrero Switchyard

1. Office trailer use occurred Monday through Friday.
2. Overaa conducted housekeeping and dust control activities Monday through Friday.
3. Overaa aided other work crews Monday through Friday.
4. Overaa worked on safety hand rails and stair landings in the GIS building on Tuesday and Wednesday.
5. Metal Set installed stairs in the GIS building on Monday and Wednesday through Friday.
6. B.T. Mancini installed pan decking in the GIS building on Monday, and installed studs on the pan decking Wednesday and Thursday (see Figure 1).
7. Scaffold Solutions conducted work on scaffolding in the GIS building on Tuesday.
8. MEI conducted electrical work in the GIS building Wednesday through Friday.
9. CMC installed rebar on the roof of the GIS building Thursday and Friday.
10. APEC excavated a concrete footing west of the GIS building on Wednesday and Friday (see Figure 2).
11. APEC installed rebar at the transformer pad Thursday and Friday (see Figure 3).
12. ERS exposed waterproofing in preparation for reinstallation on the GIS building Wednesday and Thursday (see Figure 4).
13. CCE installed grounding in the control room basement Monday through Friday.
14. Clean Harbors delivered empty roll-off bins for soil disposal to the site on Friday.
15. No work activities occurred on Saturday or Sunday.

Substation Adjacent to Potrero Switchyard

1. CCE QEW monitored work in the substation Tuesday through Thursday.
2. APEC conducted dust control activities Monday through Friday.
3. APEC excavated, installed conduit, and installed grounding cable Tuesday through Thursday.
4. APEC backfilled on Wednesday and Thursday.
5. APEC demolished concrete foundations on Thursday.
6. No work activities occurred on Sunday.

Environmental Compliance:

1. Cultural monitoring was conducted by Far Western Tuesday through Friday, at which time cultural constituents were observed, documented, and some collected.
2. Air quality monitoring was conducted by ERM Tuesday through Friday.
3. PG&E's Environmental Inspector conducted monitoring of this area Tuesday through Friday, including SWPPP inspections.
4. PG&E's Environmental Inspector noted one compliance issue at this location. On January 15th, construction-related garbage was observed on the ground, including pieces of plastic and wattle fragments, in a small pile at the east end of the switchyard adjacent to a gravel spoils pile. On January 20th, the PG&E Environmental Inspector observed that the trash had been picked up.

E-P Submarine Cable Installation

NTP #6 was issued on April 7, 2015 for the submarine cable installation component of the Embarcadero-Potrero 230 kV Transmission Project in the San Francisco Bay. NTP #6 included conditions that had to be satisfied prior to the start of construction.

Summary of Activity:

1. All work activities for the submarine cable installation were completed during Week #50.

Amador Staging and Laydown Yard

A Minor Project Change #1 was issued on July 23, 2014 for the use of the Amador Staging and Laydown Yard on Amador Street, San Francisco. The Minor Project Change #1 included conditions that had to be satisfied prior to the staging of equipment and materials at the yard.

Summary of Activity:

1. All remaining materials were removed on December 7th and the yard has been turned back over to the Port of San Francisco.

Environmental Compliance:

1. No compliance monitoring was conducted.

Notices to Proceed

Table 1 summarizes the Notices to Proceed (NTP) for the Embarcadero-Potrero Project.

Table 1
Notice to Proceeds (NTPs)
(Updated 1/28/16)

NTP #	Date Requested	Date Issued	Phase	Description
NTP #1	6/23/14	8/21/14	Potrero Site Preparation	Site preparation and excavation of the 230 kV Potrero Switchyard site on 23 rd St., SF.
NTP #2	7/31/14	8/28/14	HDD	Horizontal directional drilling on Spear St. and 23 rd St. connecting to the SF Bay.
NTP #3	9/18/14	10/09/14	Underground Duct Bank and Vaults	Underground duct bank and vault installation between the HDD transition on Spear St. to the Embarcadero Substation on Folsom St. in the northern section, and between the HDD transition on 23 rd St. to the Potrero Switchyard in the southern section, SF.
NTP #3 MOD	11/13/14	11/14/14	Underground Duct Bank and Vaults	Trench from the new Potrero Switchyard to the existing switchyard for the 230 kV/115 kV connections across the Trans Bay Cable.
NTP #4	11/19/14	11/21/14	Subsea Cable	Rock and debris removal along subsea cable route.
NTP #5	2/19/15	3/27/15	Potrero GIS Switchgear Building	Construction of 230 kV Potrero gas-insulated switchgear (GIS) building and cable tie-in component at Potrero Switchyard.

Minor Project Changes

Table 2 summarizes the Minor Project Changes submitted for the Embarcadero-Potrero Project.

Table 2
Minor Project Changes (MPCs)
(Updated 1/28/16)

MPC #	Date Requested	Date Issued	Phase	Description
MPC #1	7/16/14	7/23/14	Amador Staging and Laydown Yard	Use of an existing staging and laydown yard adjacent to Alternate Staging Area #3 (as identified in the IS/MND) on Amador St., SF.
MPC #2	12/31/14	1/5/15	Staging and Laydown Yard	Use of an existing paved staging and laydown yard at 1215 Michigan Street, SF, two blocks from the Potrero Switchyard.

PROJECT PHOTOS



Figure 1 – B.T. Mancini installed studs on the pan decking in GIS building. View northeast, January 20, 2016. Photo courtesy of PG&E.



Figure 2 – APEC excavated a concrete footing west of the GIS building. View east, January 22, 2016. Photo courtesy of PG&E.



Figure 3 – APEC installed rebar at the transformer pad. View south, January 22, 2016.
Photo courtesy of PG&E.

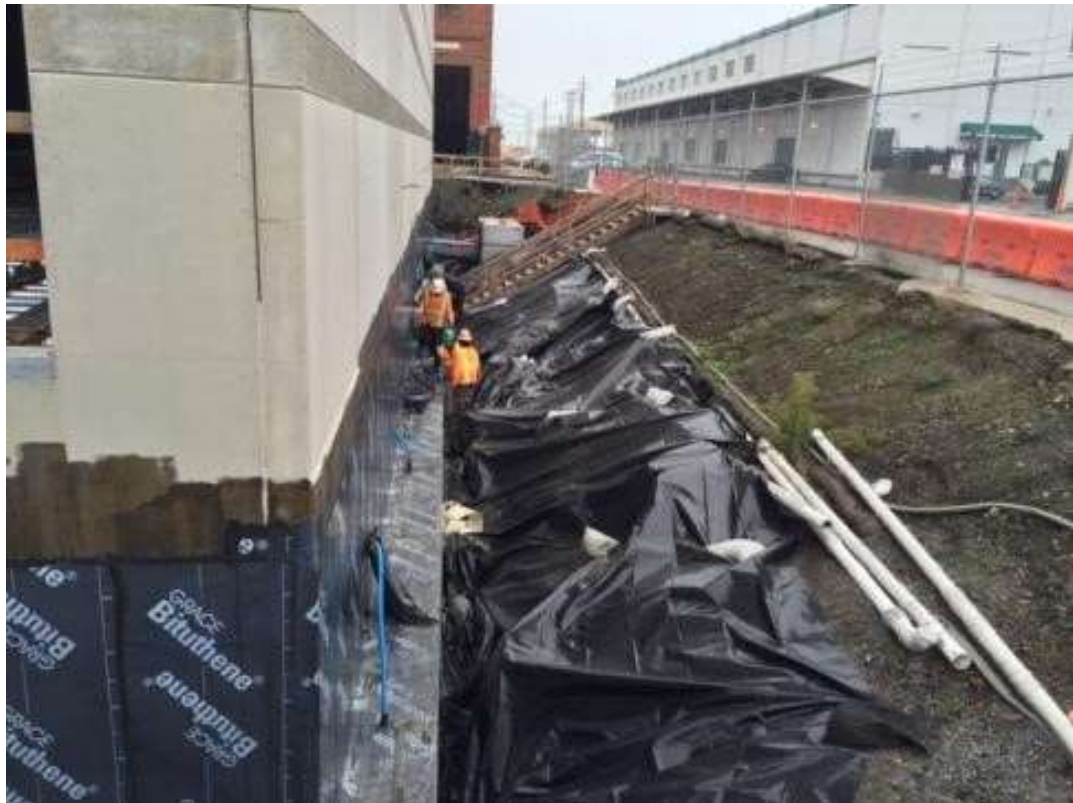


Figure 4 – ERS exposed waterproofing in preparation for reinstallation on the GIS building. View east, January 20, 2016. Photo courtesy of PG&E.