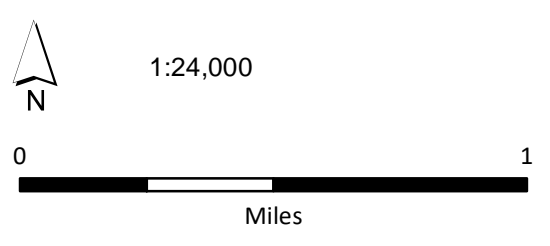
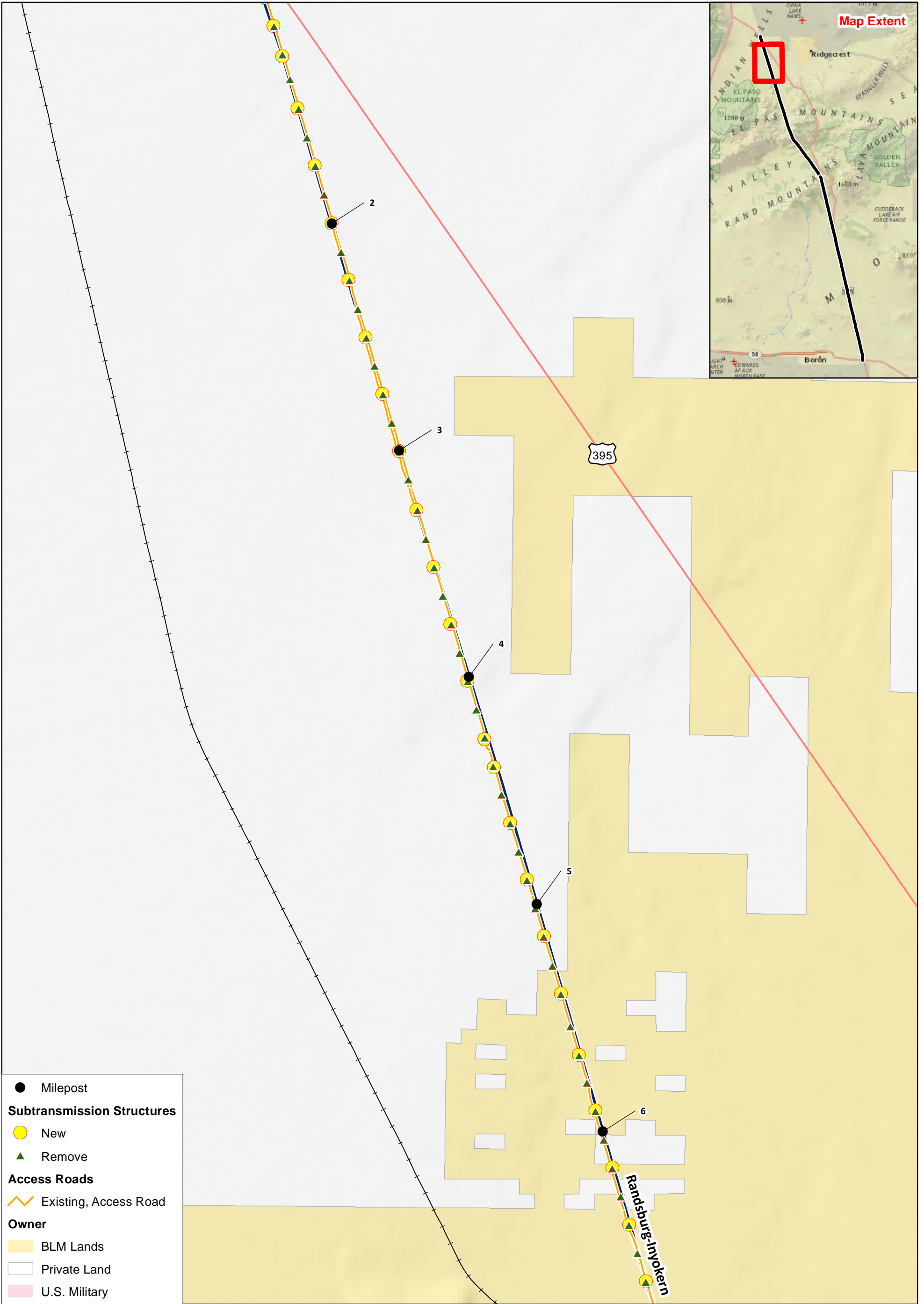


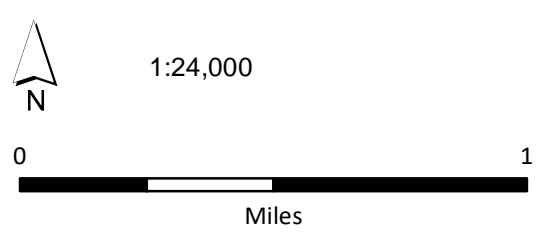
- Milepost
- Subtransmission Structures**
- New
- ▲ Remove
- Access Roads**
- Existing, Access Road
- New, Overland Travel
- Owner**
- BLM Lands
- Private Land
- U.S. Military

- Substation
- 115kV Transmission Line**
- Segment 1
- Segment 2





- Milepost
- Subtransmission Structures**
- New
- ▲ Remove
- Access Roads**
- Existing, Access Road
- Owner**
- BLM Lands
- Private Land
- U.S. Military

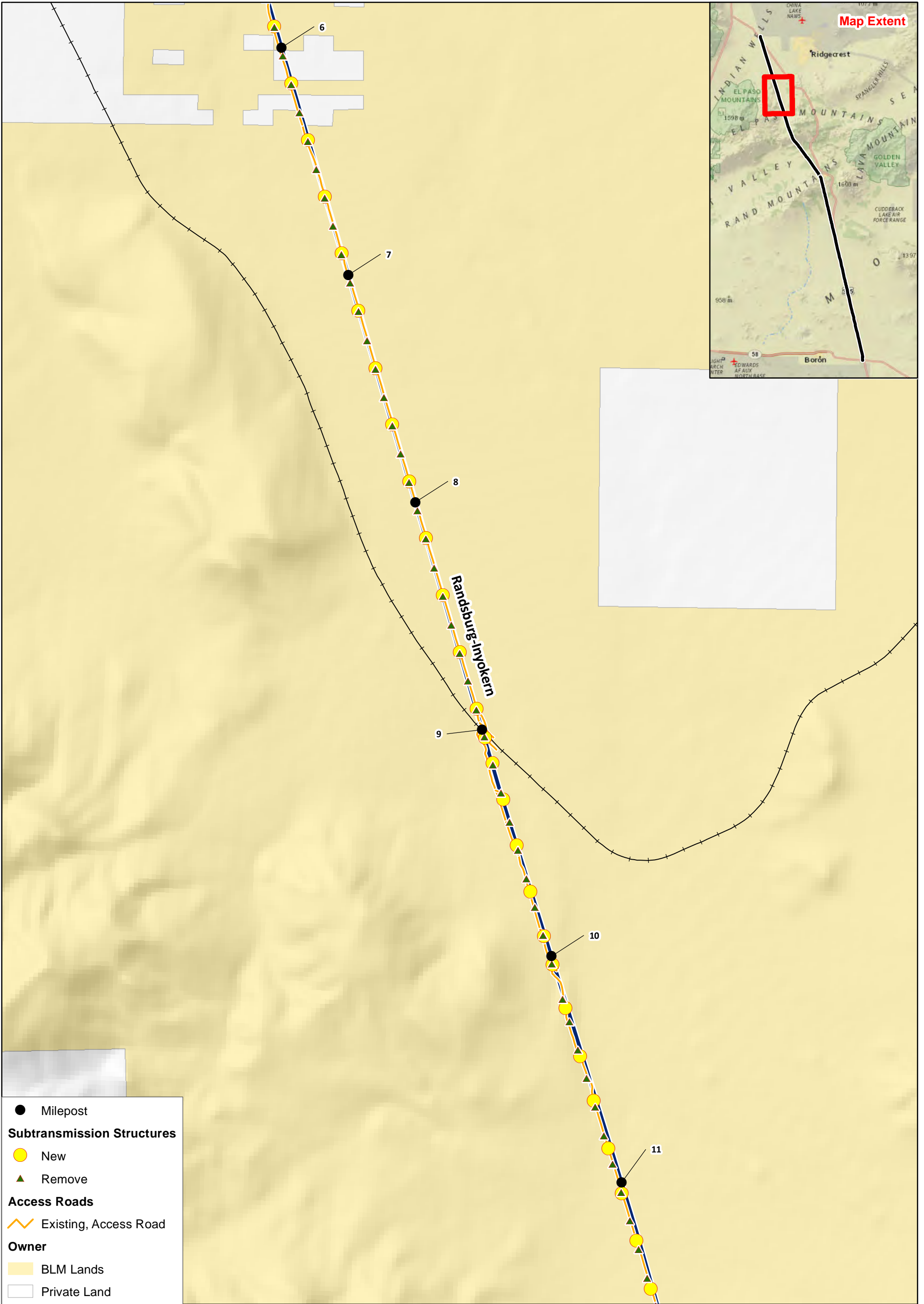


115kV Transmission Line
 Segment 2


Ivanpah-Control Overview Map

Segment 2

Sheet 2



- Milepost
- Subtransmission Structures**
- New
- ▲ Remove
- Access Roads**
- Existing, Access Road
- Owner**
- BLM Lands
- Private Land



1:24,000



Miles

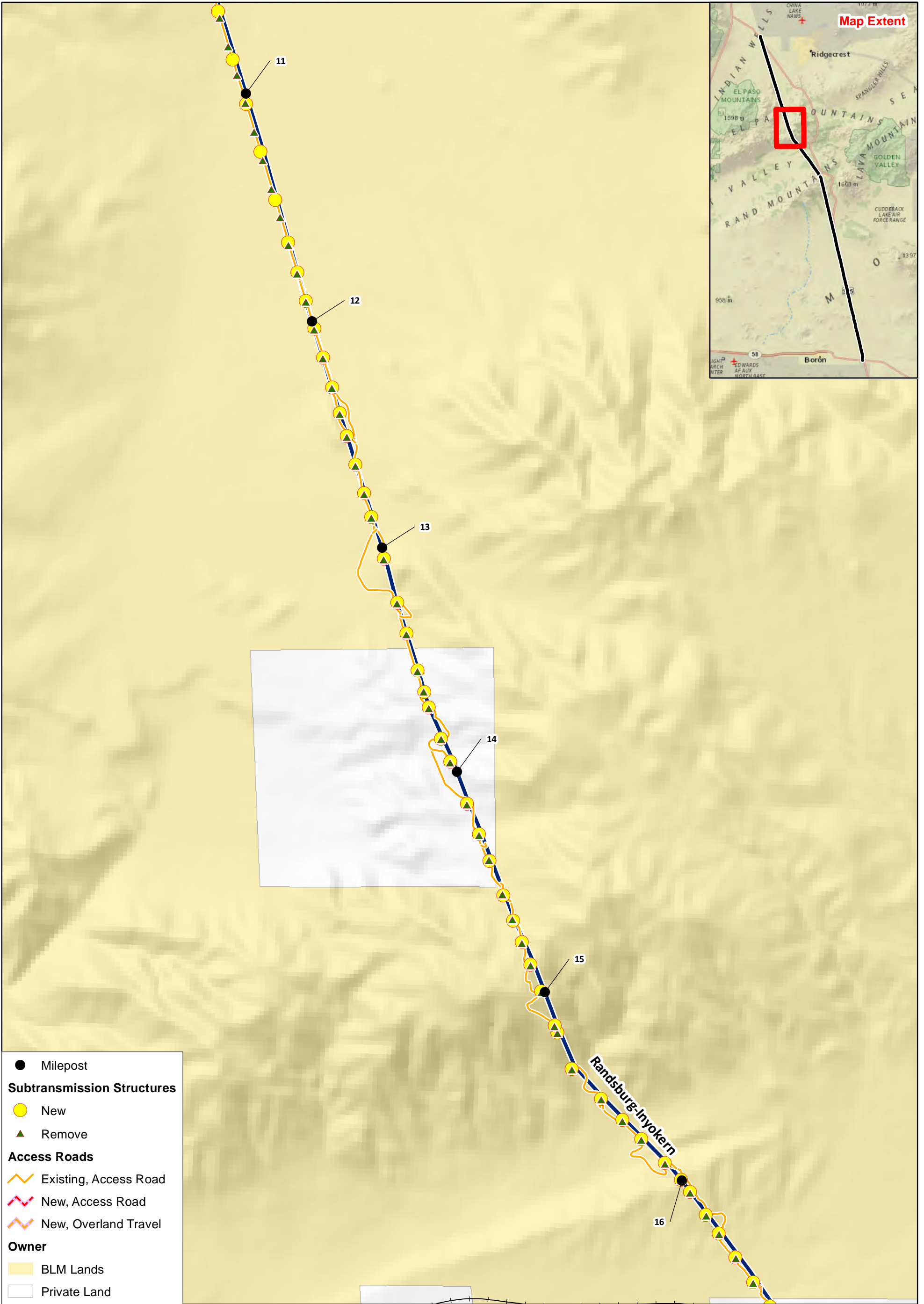
115kV Transmission

Segment 2

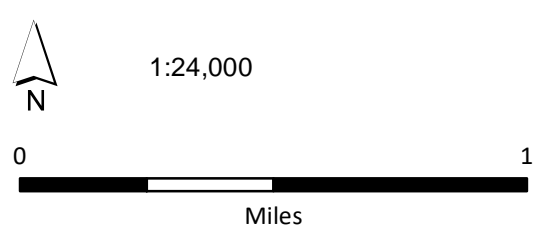
Ivanpah-Control Overview Map

Segment 2

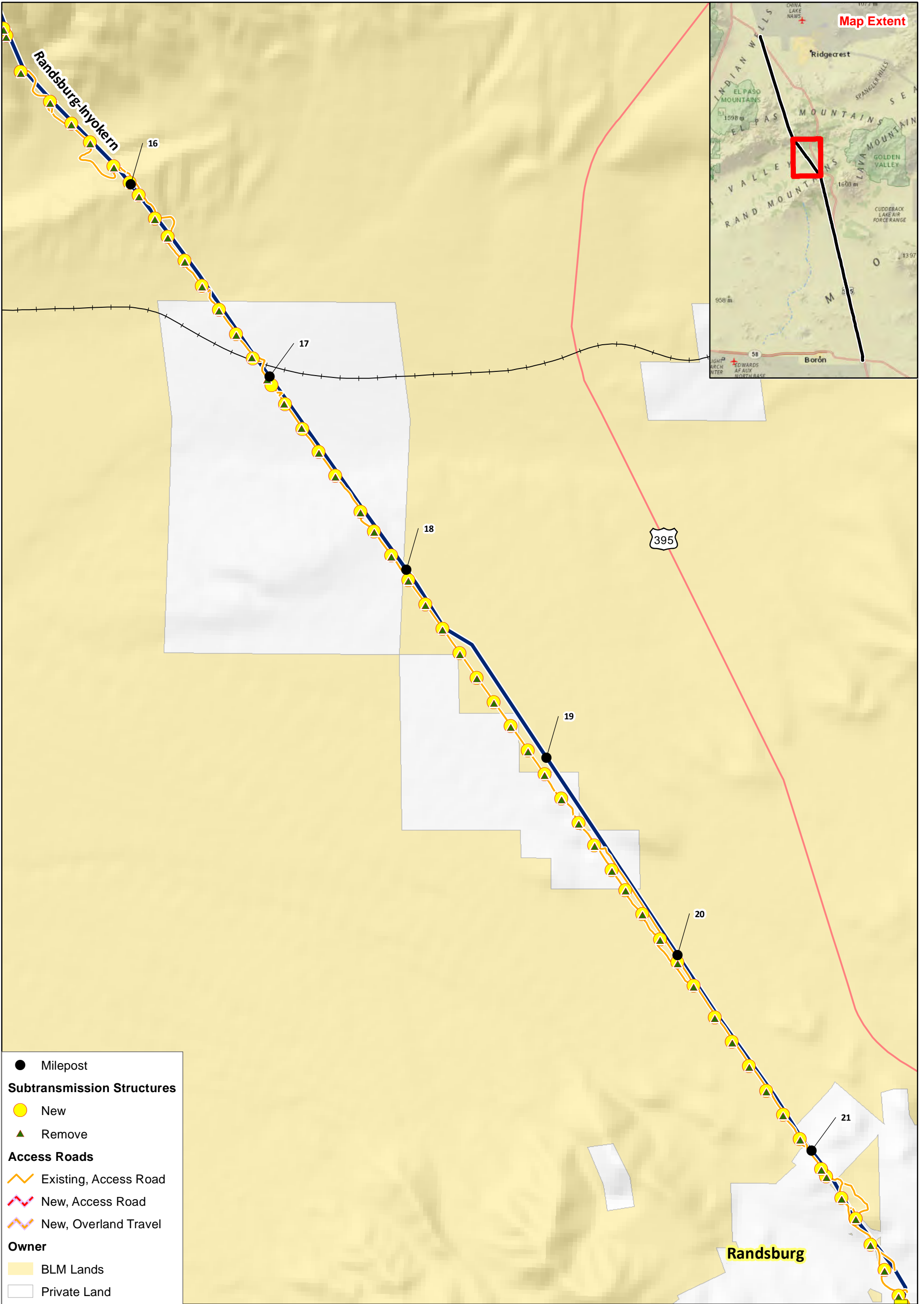
Sheet 3



- Milepost
- Subtransmission Structures**
- New
- ▲ Remove
- Access Roads**
- Existing, Access Road
- New, Access Road
- New, Overland Travel
- Owner**
- BLM Lands
- Private Land



115kV Transmission Line
 Segment 2



- Milepost
- Subtransmission Structures**
- New
- ▲ Remove
- Access Roads**
- Existing, Access Road
- New, Access Road
- New, Overland Travel
- Owner**
- BLM Lands
- Private Land

1:24,000

Miles

■ Substation

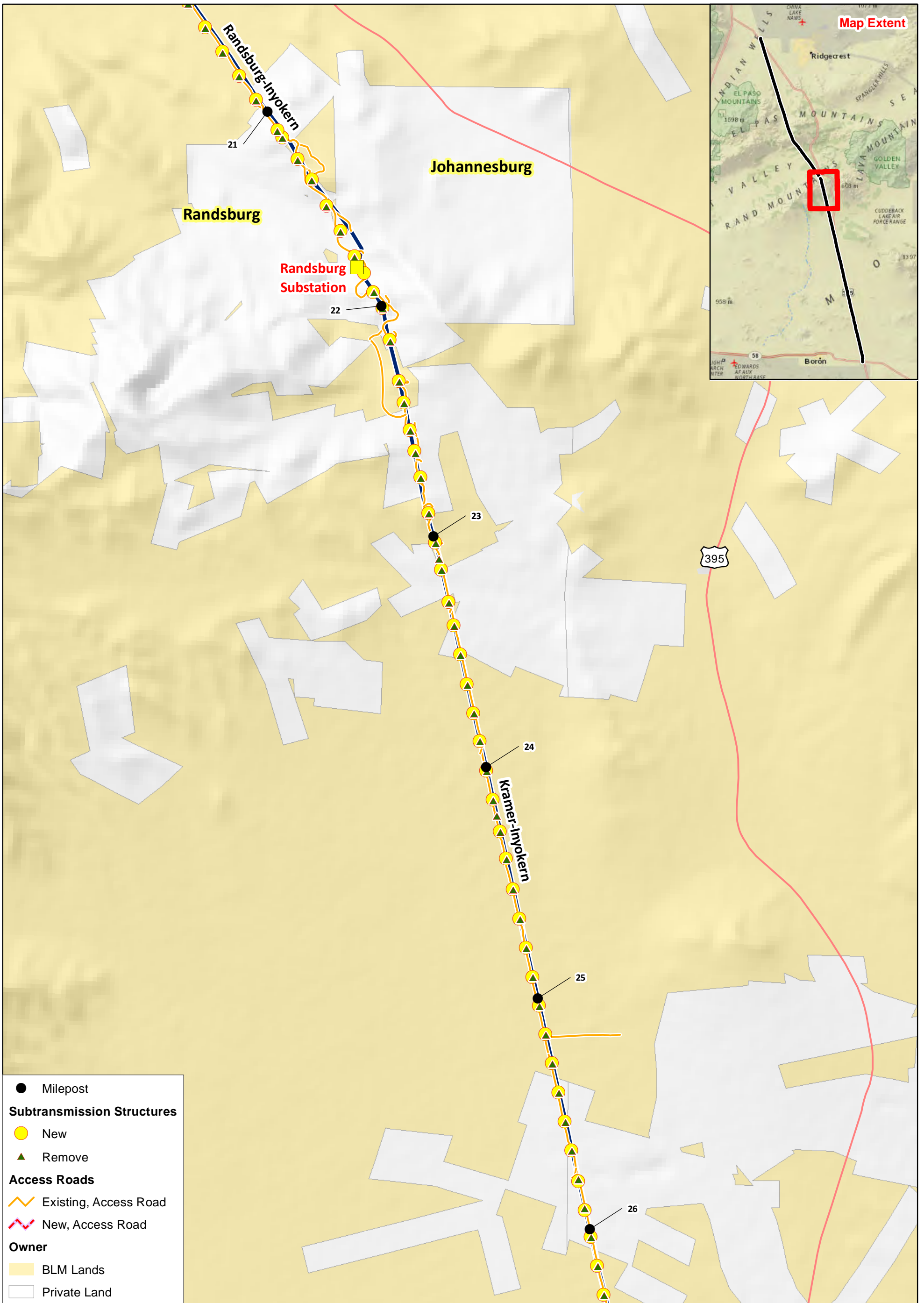
115kV Transmission Line

— Segment 2

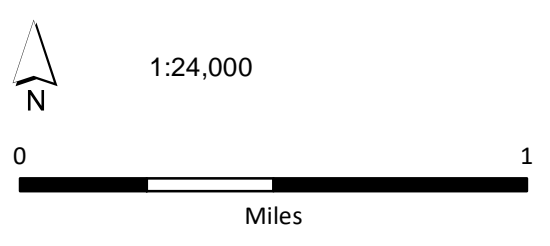
Ivanpah-Control Overview Map

Segment 2

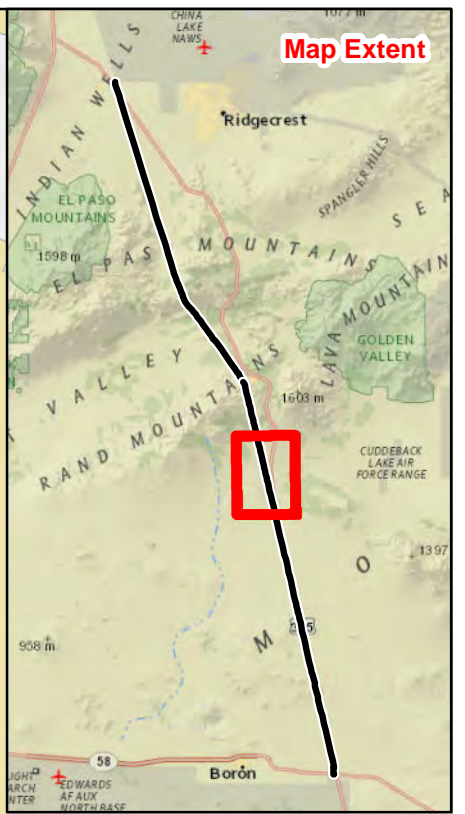
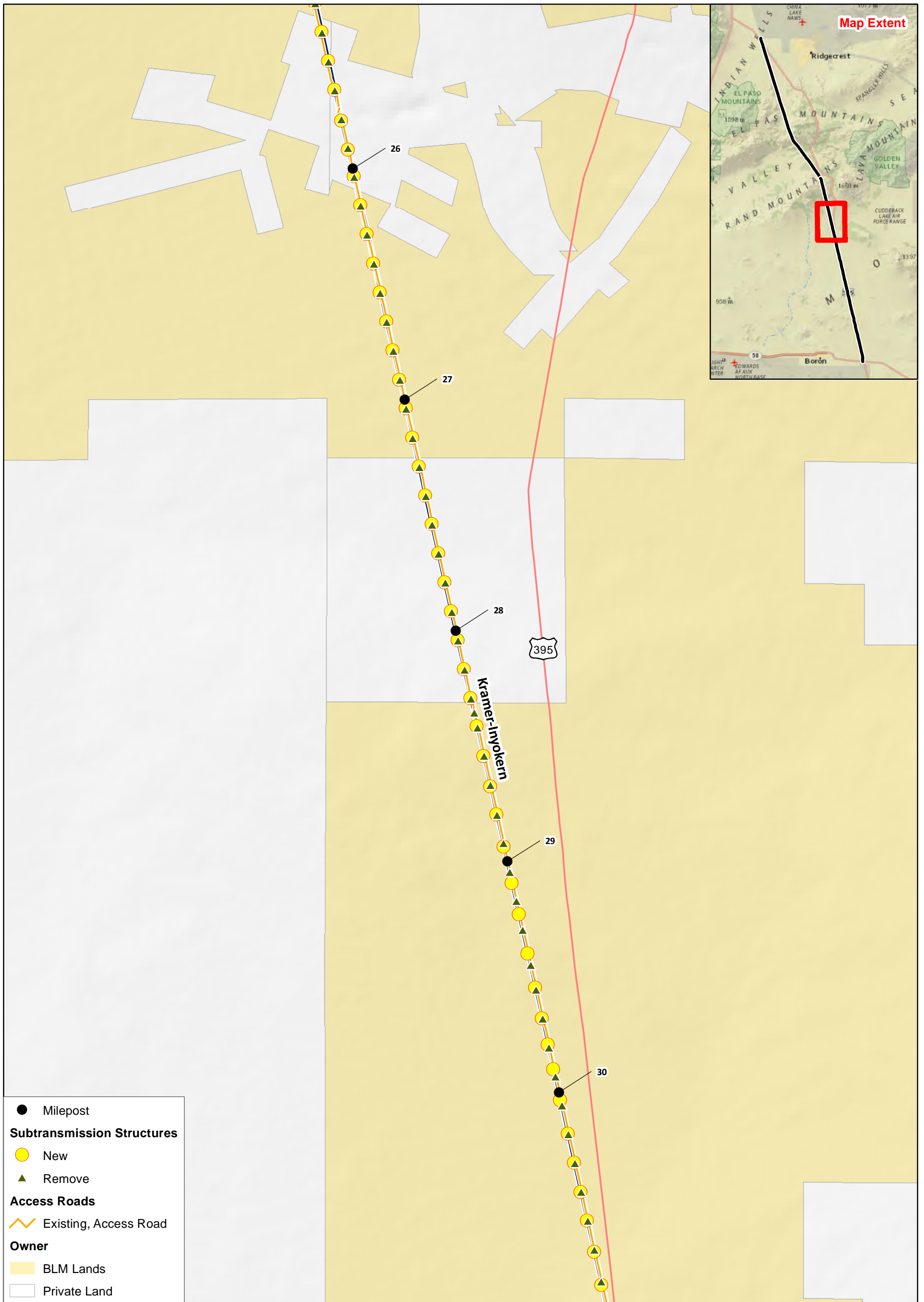
Sheet 5



- Milepost
- Subtransmission Structures**
- New
- ▲ Remove
- Access Roads**
- Existing, Access Road
- New, Access Road
- Owner**
- BLM Lands
- Private Land



■ Substation
115kV Transmission Line
— Segment 2



1:24,000



Miles

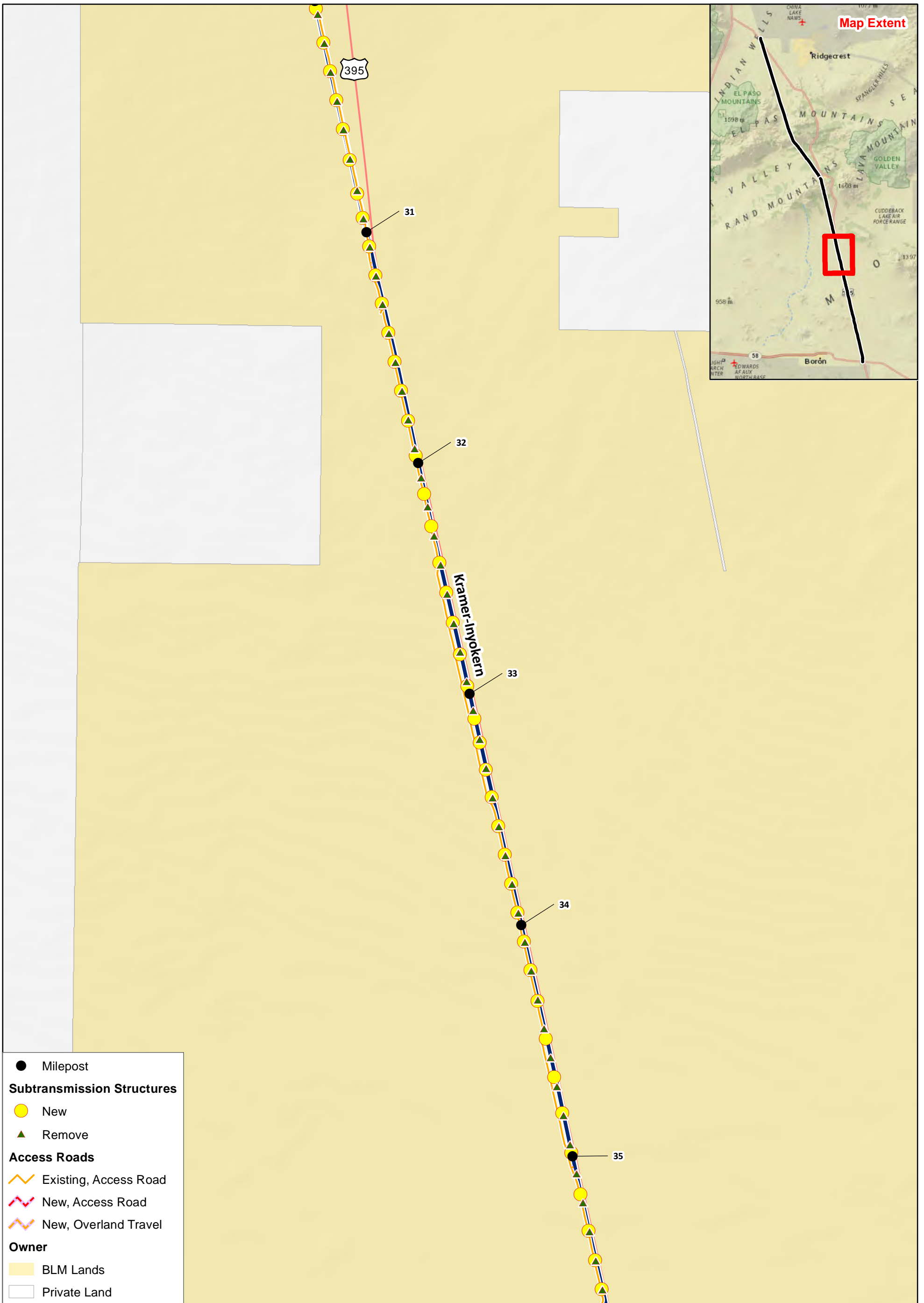
115kV Transmission Line

Segment 2

Ivanpah-Control Overview Map

Segment 2

Sheet 7



1:24,000



Miles

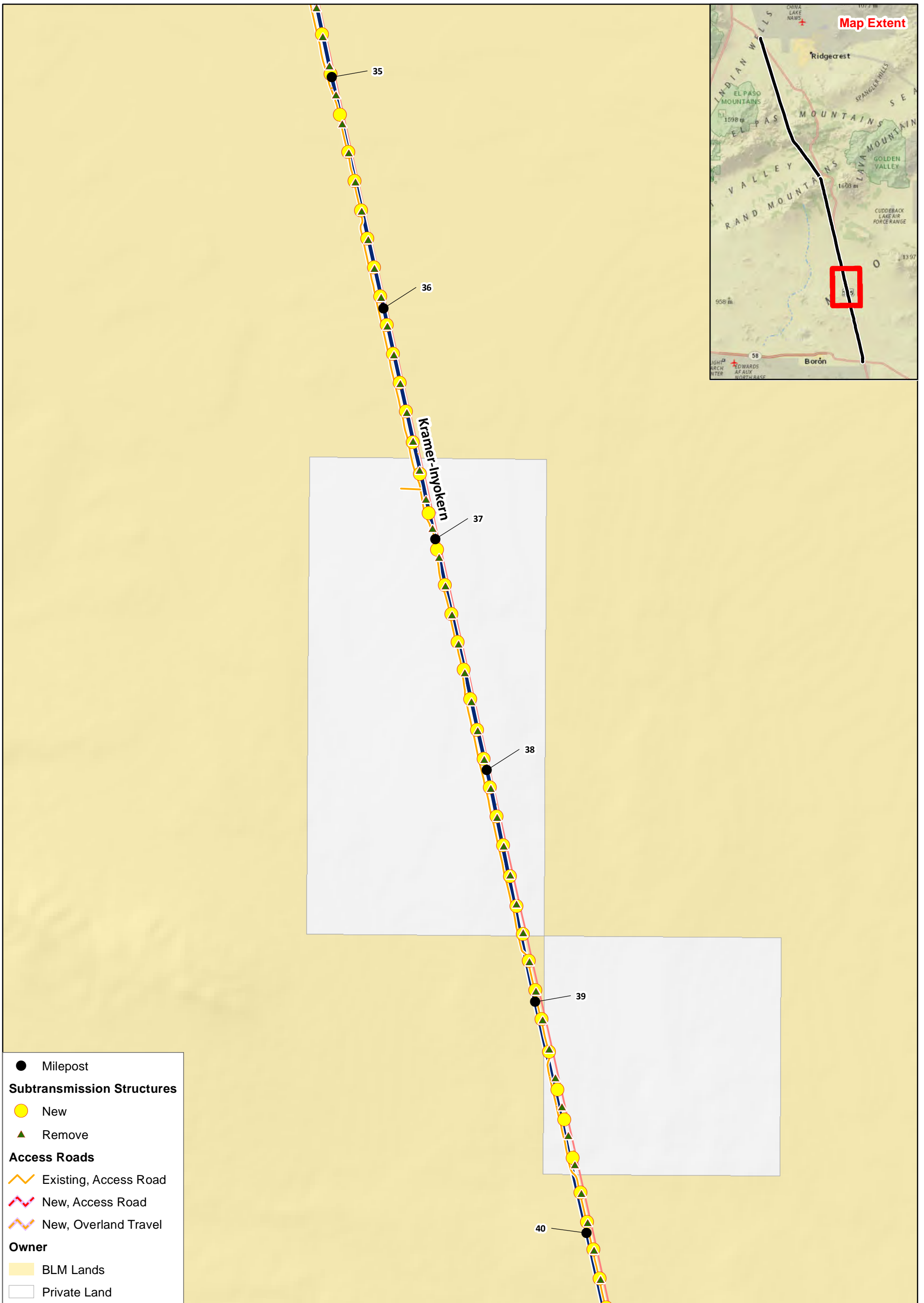
115kV Transmission Line

Segment 2

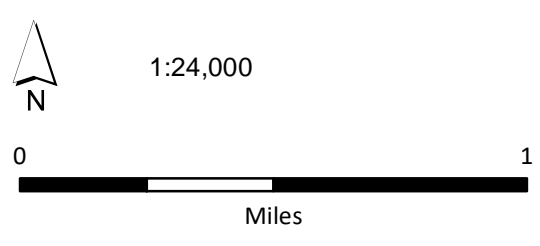
Ivanpah-Control Overview Map

Segment 2

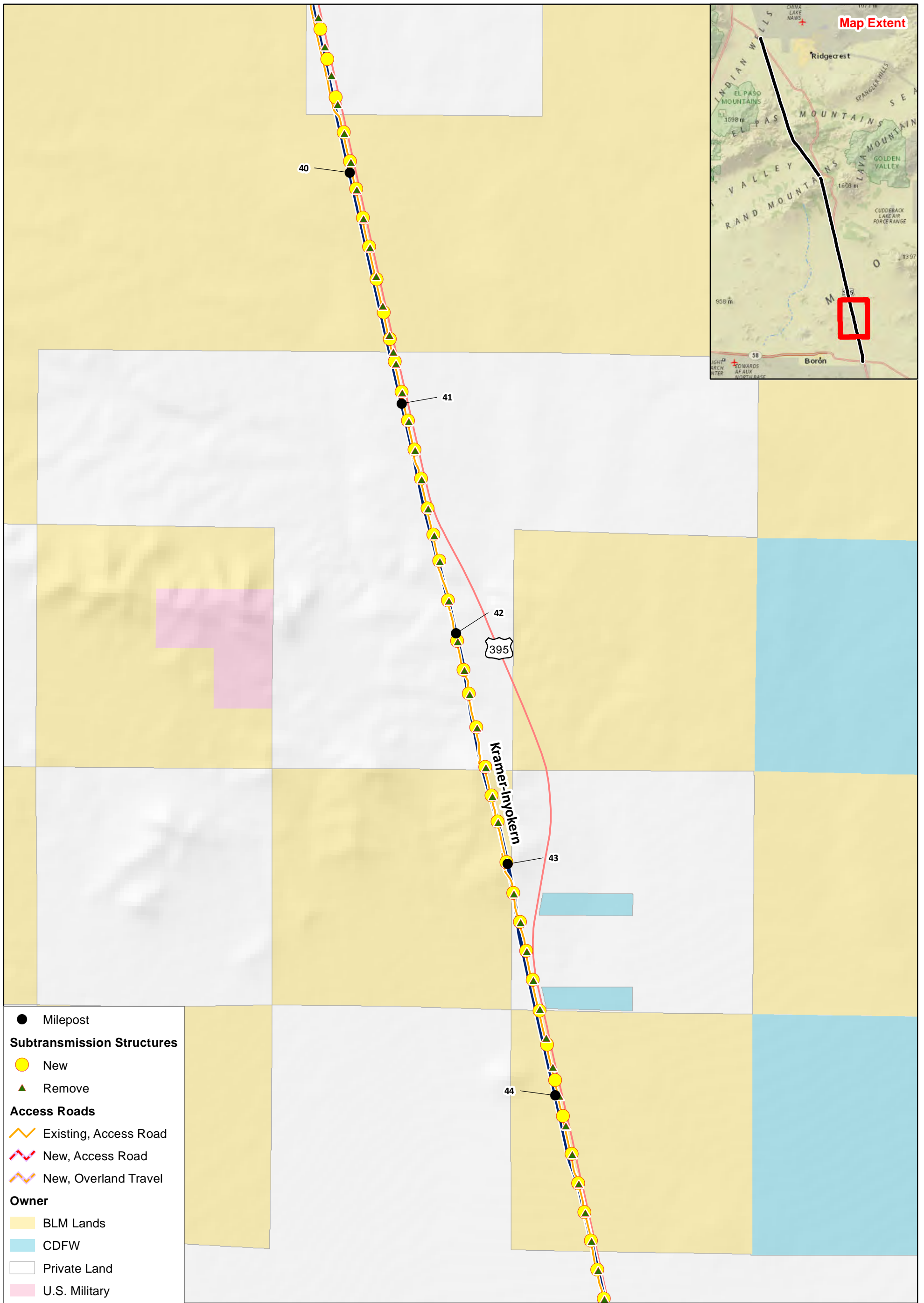
Sheet 8



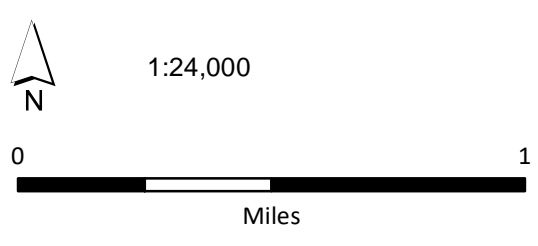
- Milepost
- Subtransmission Structures**
- New
- ▲ Remove
- Access Roads**
- Existing, Access Road
- New, Access Road
- New, Overland Travel
- Owner**
- BLM Lands
- Private Land



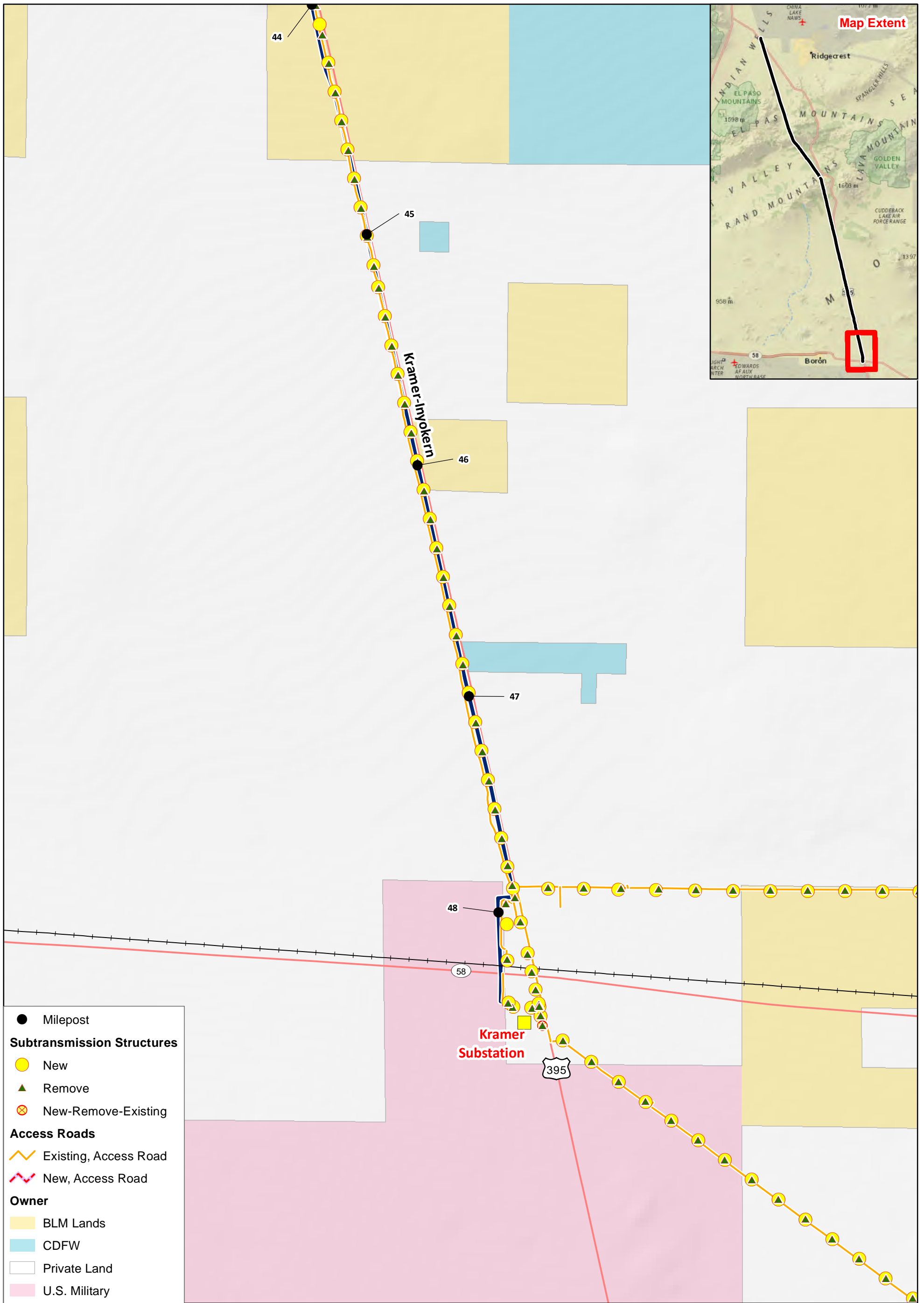
115kV Transmission Line
 Segment 2



- Milepost
- Subtransmission Structures**
- New
- ▲ Remove
- Access Roads**
- Existing, Access Road
- New, Access Road
- New, Overland Travel
- Owner**
- BLM Lands
- CDFW
- Private Land
- U.S. Military



115kV Transmission Line
 Segment 2



- Milepost
- Subtransmission Structures**
- New
- ▲ Remove
- ⊗ New-Remove-Existing
- Access Roads**
- Existing, Access Road
- New, Access Road
- Owner**
- BLM Lands
- CDFW
- Private Land
- U.S. Military

■ Substation
115KV Transmission Line
— Segment 2

