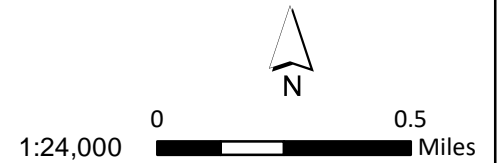


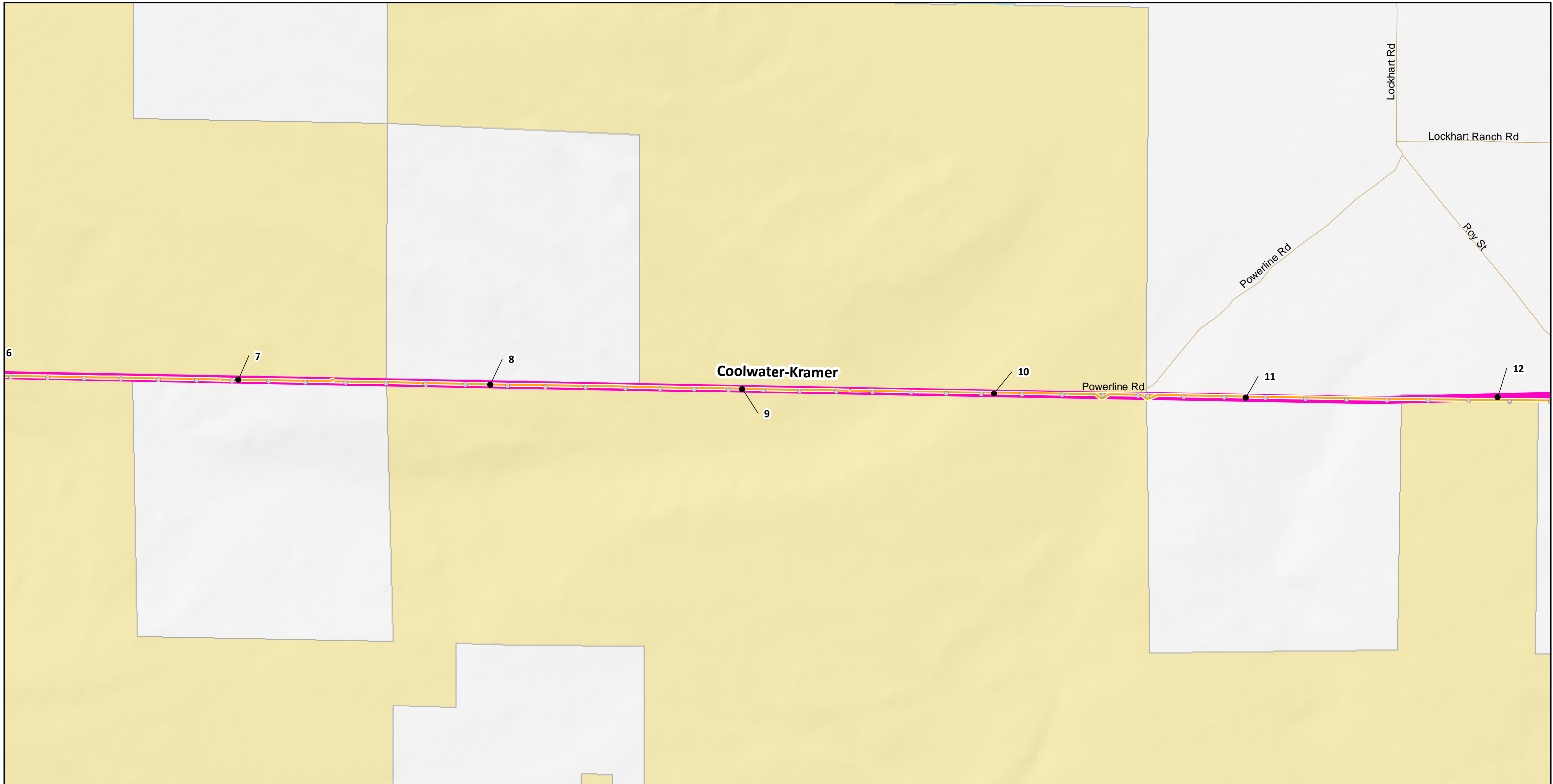
- Milepost
- Substation
- Subtransmission Structures**
 - Existing
 - Existing, Access Road
 - - - New, Access Road
- 115kV Transmission Line**
 - Segment 3N: Coolwater-Kramer
 - Segment 3S: Coolwater-Tortilla-Kramer
- Owner**
 - BLM Lands
 - CDFW
 - Private Land (no color overlay)
 - U.S. Military

Ivanpah-Control Overview Map

Segment 3N

Sheet 1



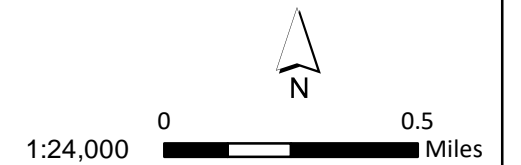


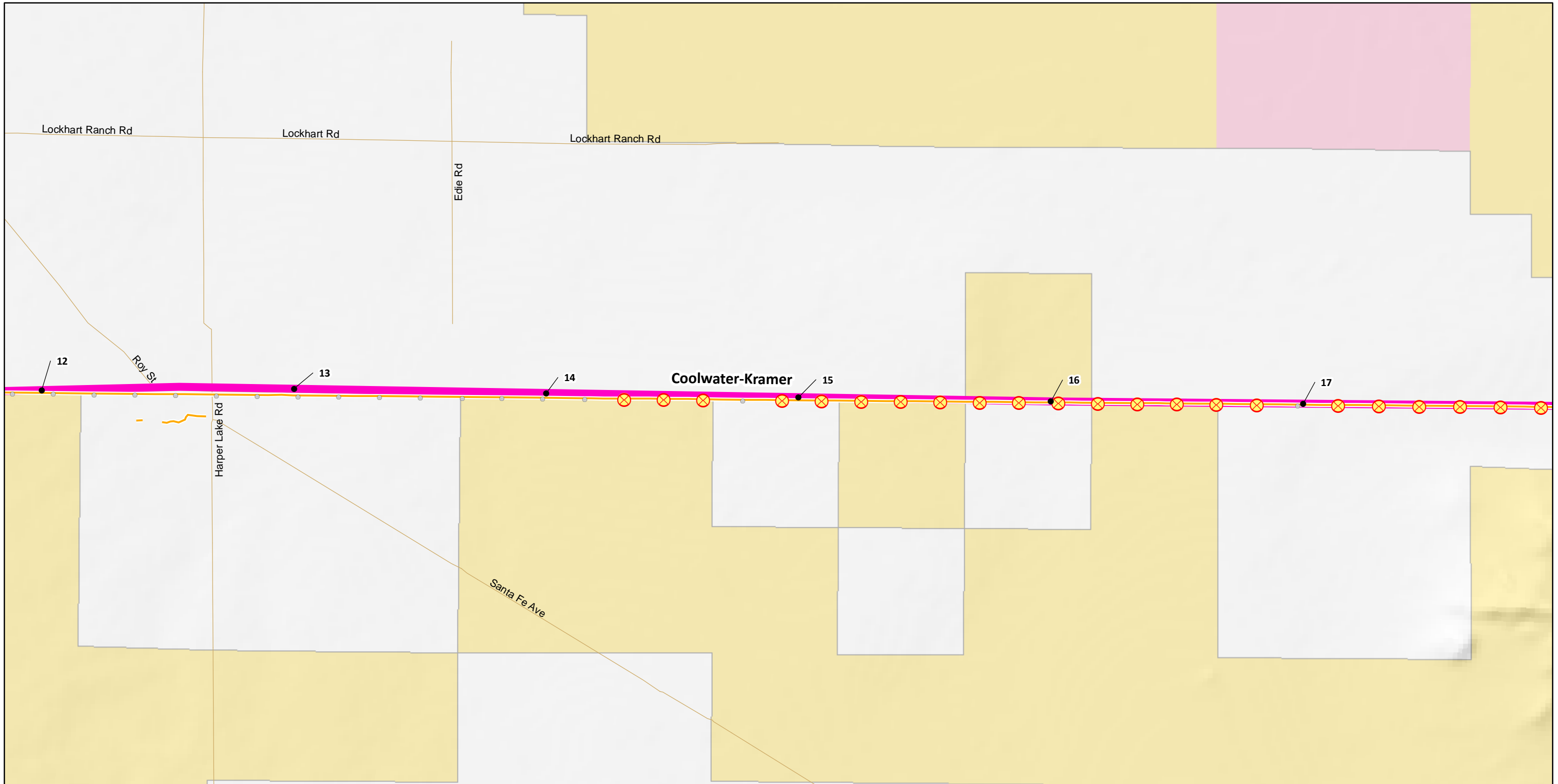
- Milepost
 - Subtransmission Structures**
 - Existing
 - Access Roads**
 - ↘ Existing, Access Road
 - 115kV Transmission Line**
 - █ Segment 3N: Coolwater-Kramer
-
- Owner**
 - BLM Lands
 - CDFW
 - Private Land (no color overlay)

Ivanpah-Control Overview Map

Segment 3N

Sheet 2



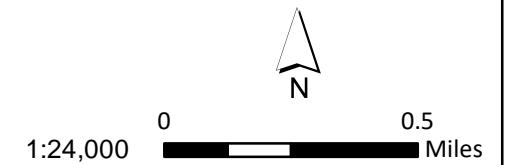


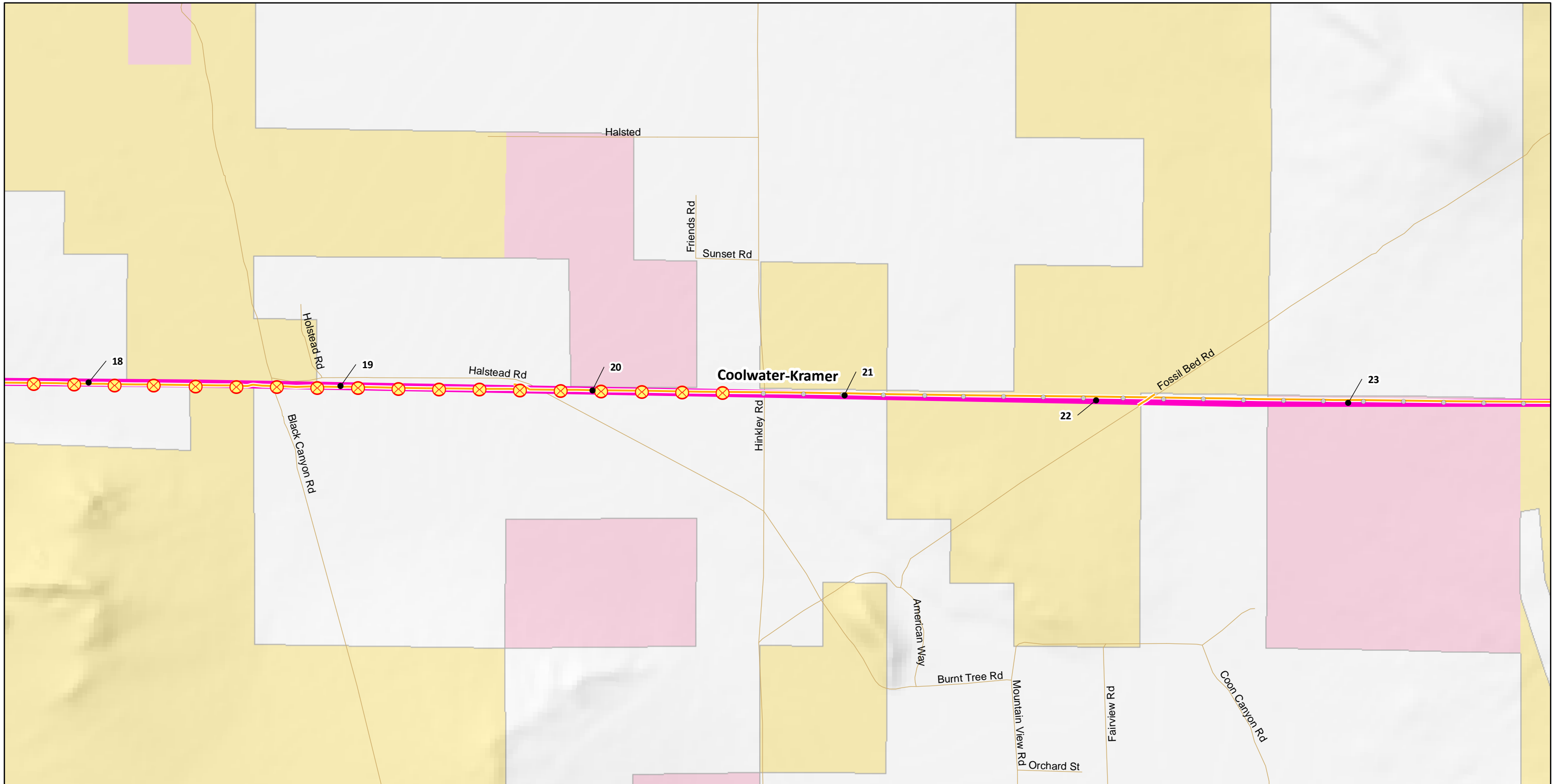
- Milepost
- Existing
- ⊗ New-Replace-Existing
- Access Roads
 - Existing, Access Road
- 115kV Transmission Line
 - Segment 3N: Coolwater-Kramer
- Owner
 - BLM Lands
 - Private Land (no color overlay)
 - U.S. Military

Ivanpah-Control Overview Map

Segment 3N

Sheet 3



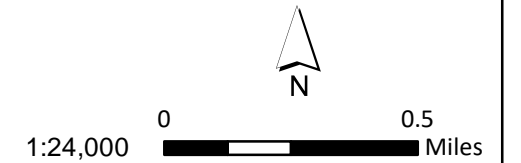


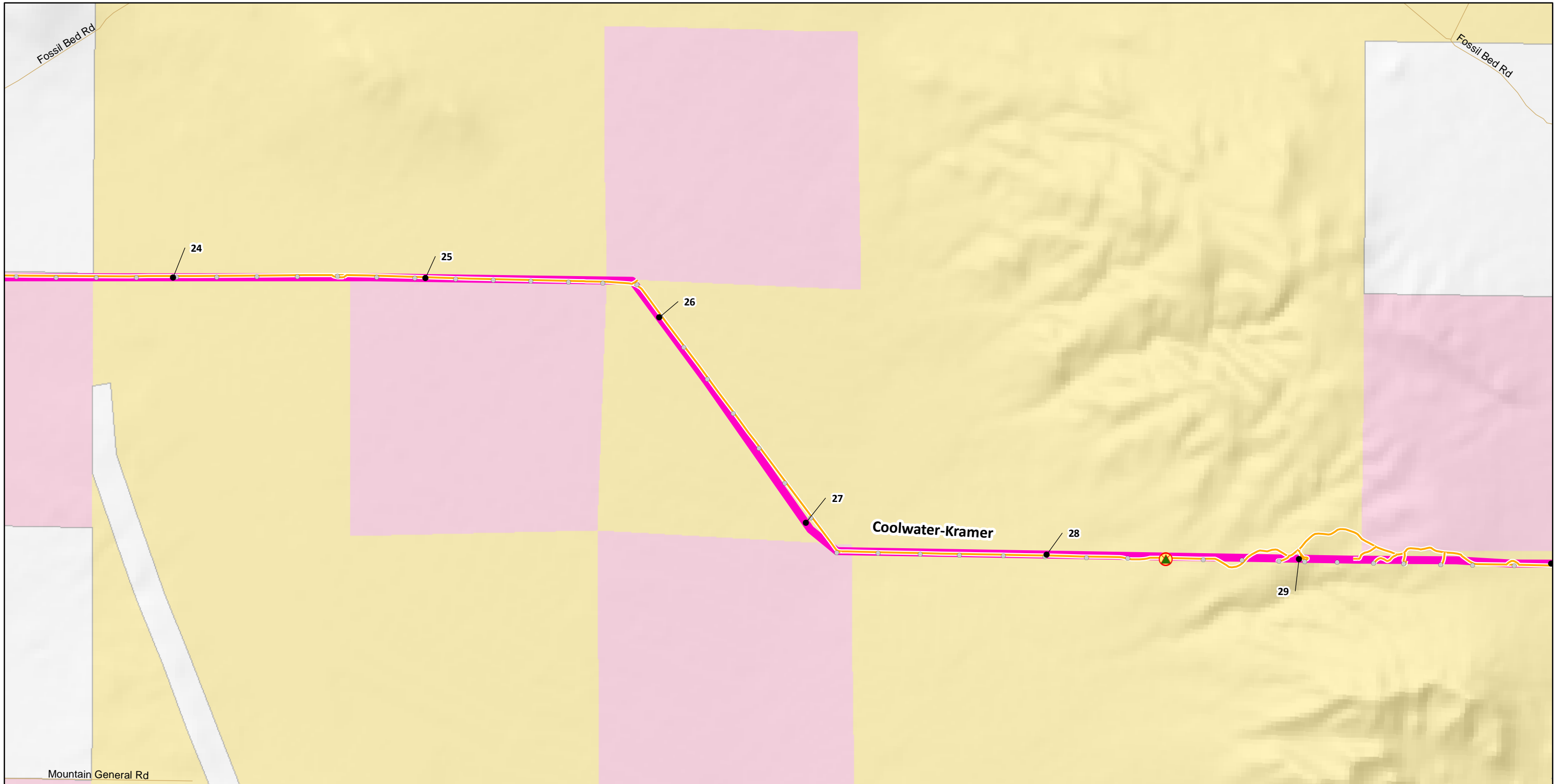
- Milepost
- ⊗ Subtransmission Structures: New-Replace-Existing
- ⚡ Access Roads: Existing, Access Road
- 🟡 115kV Transmission Line Segment 3N: Coolwater-Kramer
- 🟡 Owner: BLM Lands
- 🟡 Owner: Private Land (no color overlay)
- 🟡 Owner: U.S. Military

Ivanpah-Control Overview Map

Segment 3N

Sheet 4



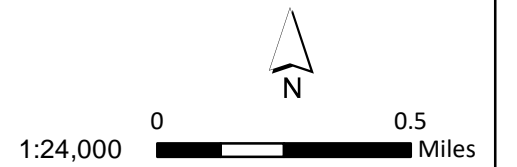


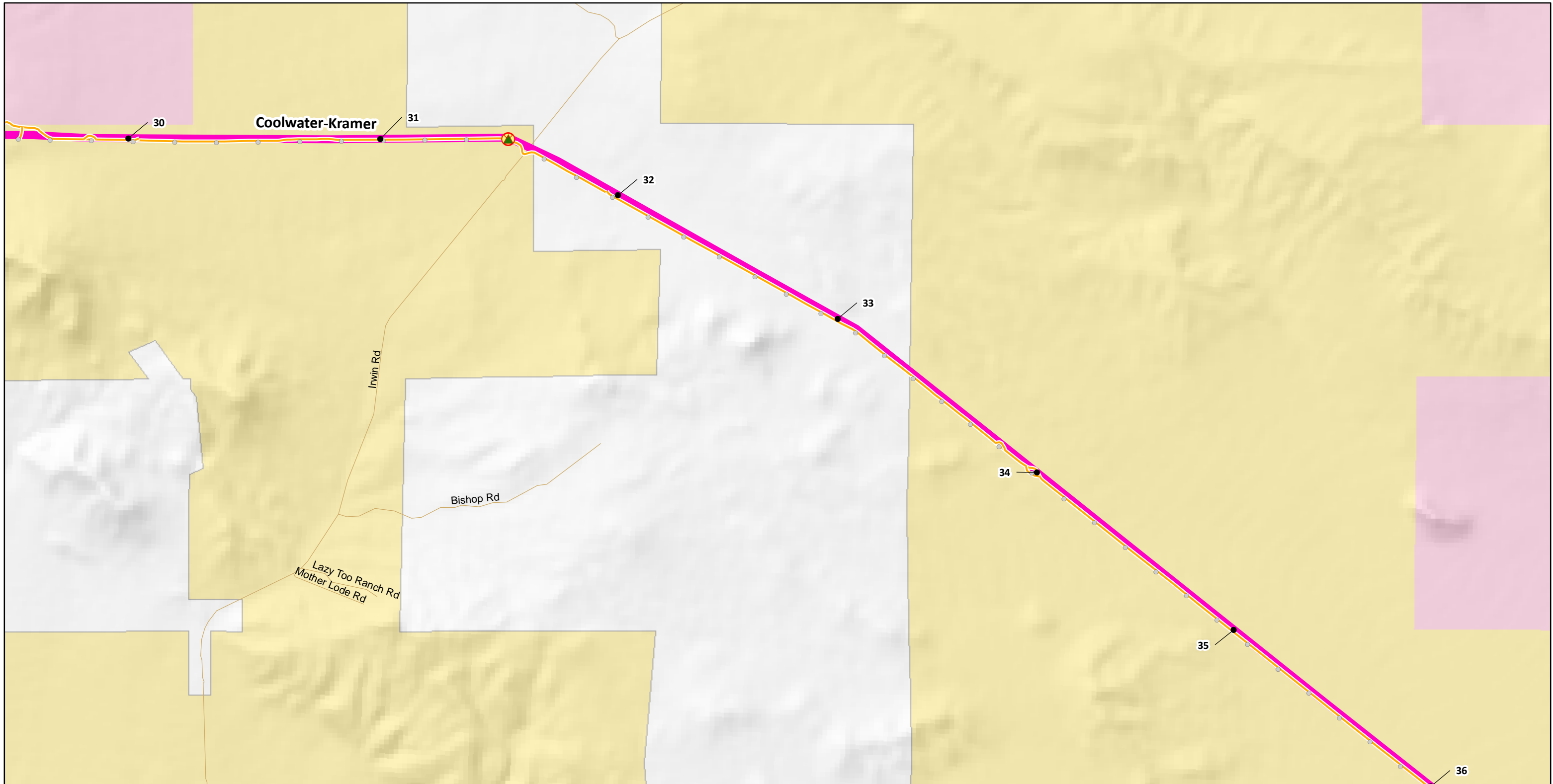
- Milepost
- Subtransmission Structures
 - Existing
 - ⊗ New-Replace-Existing
 - ▲ Remove
- Access Roads
 - ↘ Existing, Access Road
- 115kV Transmission Line
 - ↗ Segment 3N: Coolwater-Kramer
- Owner
 - BLM Lands
 - Private Land (no color overlay)
 - U.S. Military

Ivanpah-Control Overview Map

Segment 3N

Sheet 5



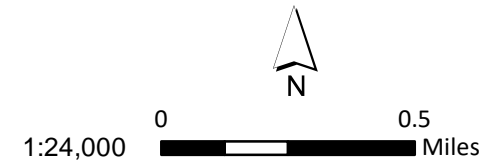


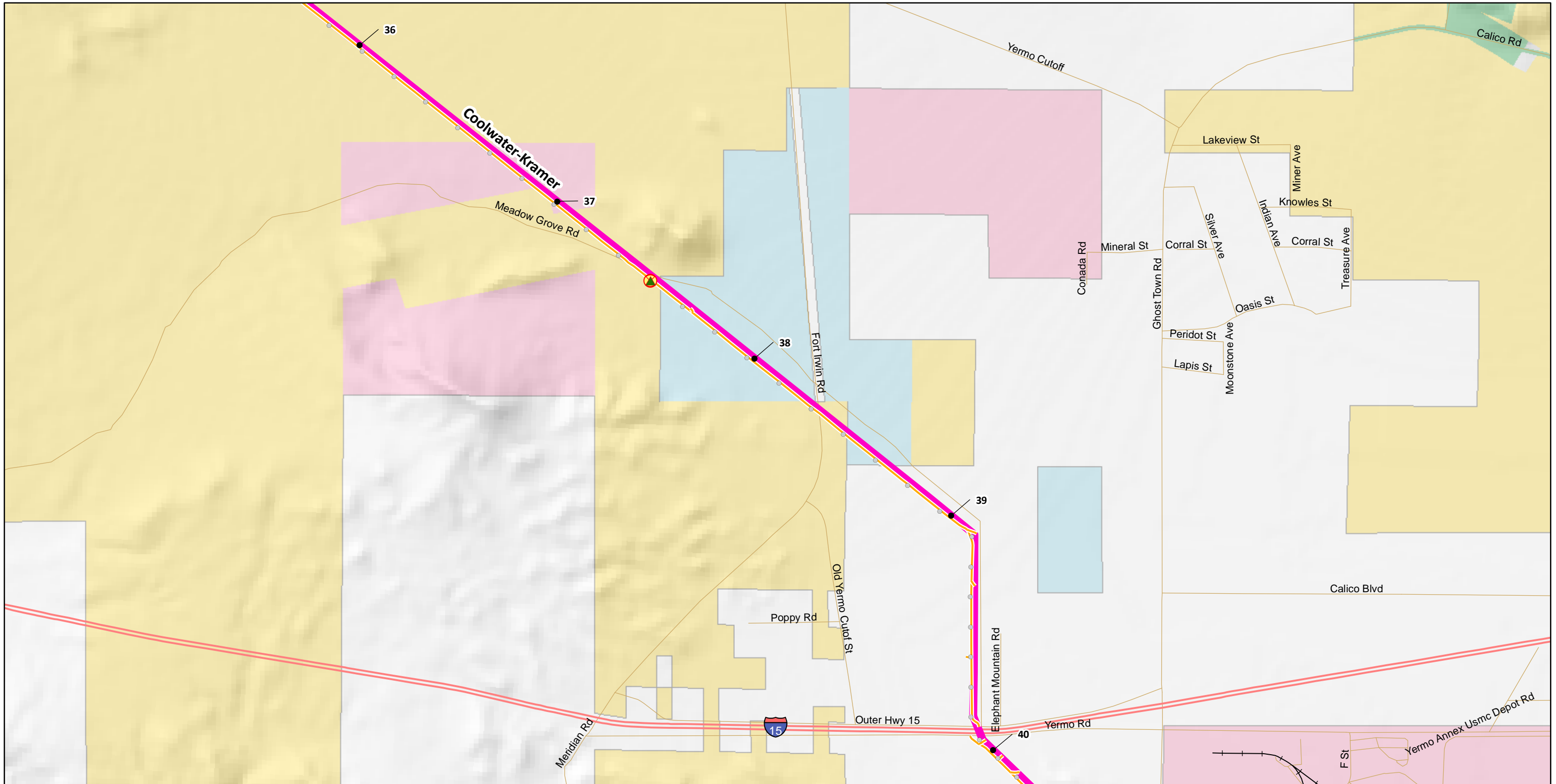
- Milepost
- Subtransmission Structures**
 - Existing
 - ⊗ New-Replace-Existing
 - ▲ Remove
- Access Roads**
 - ↘ Existing, Access Road
- 115kV Transmission Line**
 - ↗ Segment 3N: Coolwater-Kramer
- Owner**
 - BLM Lands
 - Private Land (no color overlay)
 - U.S. Military

Ivanpah-Control Overview Map

Segment 3N

Sheet 6



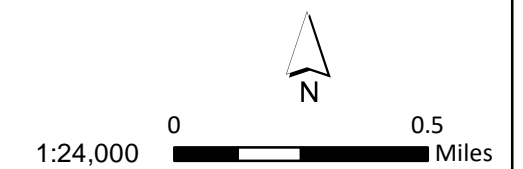


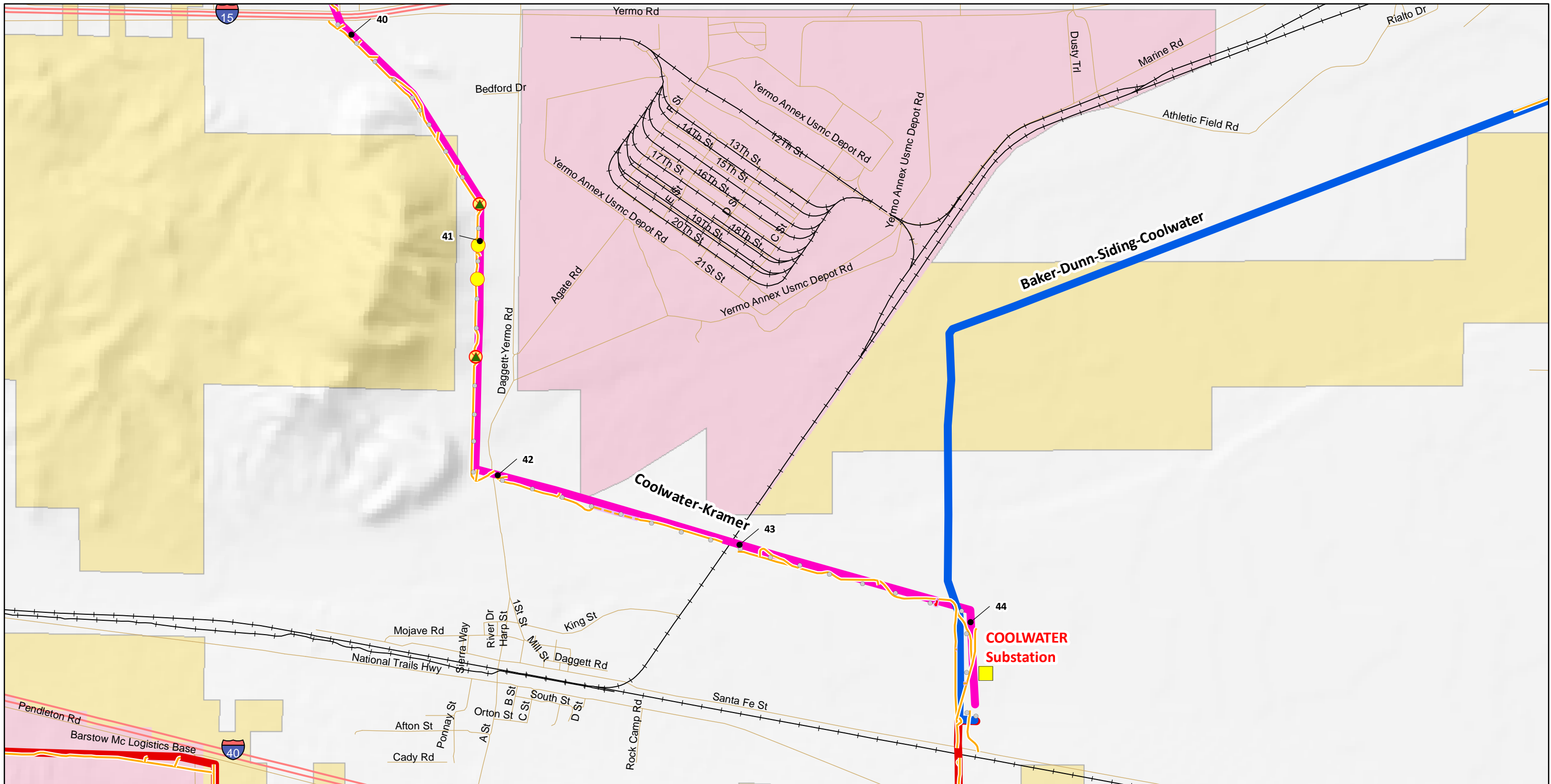
- Milepost
- Subtransmission Structures
 - Existing
 - ⊗ New-Replace-Existing
 - ▲ Remove
- Access Roads
 - ↘ Existing, Access Road
- 115kV Transmission Line
 - Segment 3N: Coolwater-Kramer
- Owner
 - BLM Lands
 - California State Lands Commission
 - LADWP/Local Government
 - Private Land (no color overlay)
- U.S. Military

Ivanpah-Control Overview Map

Segment 3N

Sheet 7





Map Extent

● Milepost

■ Substation

Subtransmission Structures

● Existing

● New

⊗ New-Replace-Existing

▲ Remove

Access Roads

Existing, Access Road

New, Access Road

New, Overland Travel

115kV Transmission Line

Segment 4: Baker-Dunn-Siding-Coolwater

Segment 3N: Coolwater-Kramer

Segment 3S: Coolwater-Tortilla-Kramer

Owner

BLM Lands

Private Land (no color overlay)

U.S. Military

Ivanpah-Control Overview Map

Segment 3N

Sheet 8

