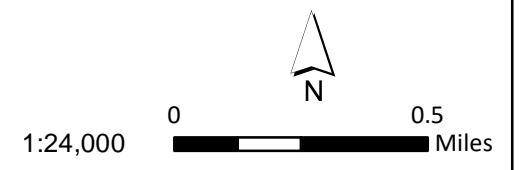


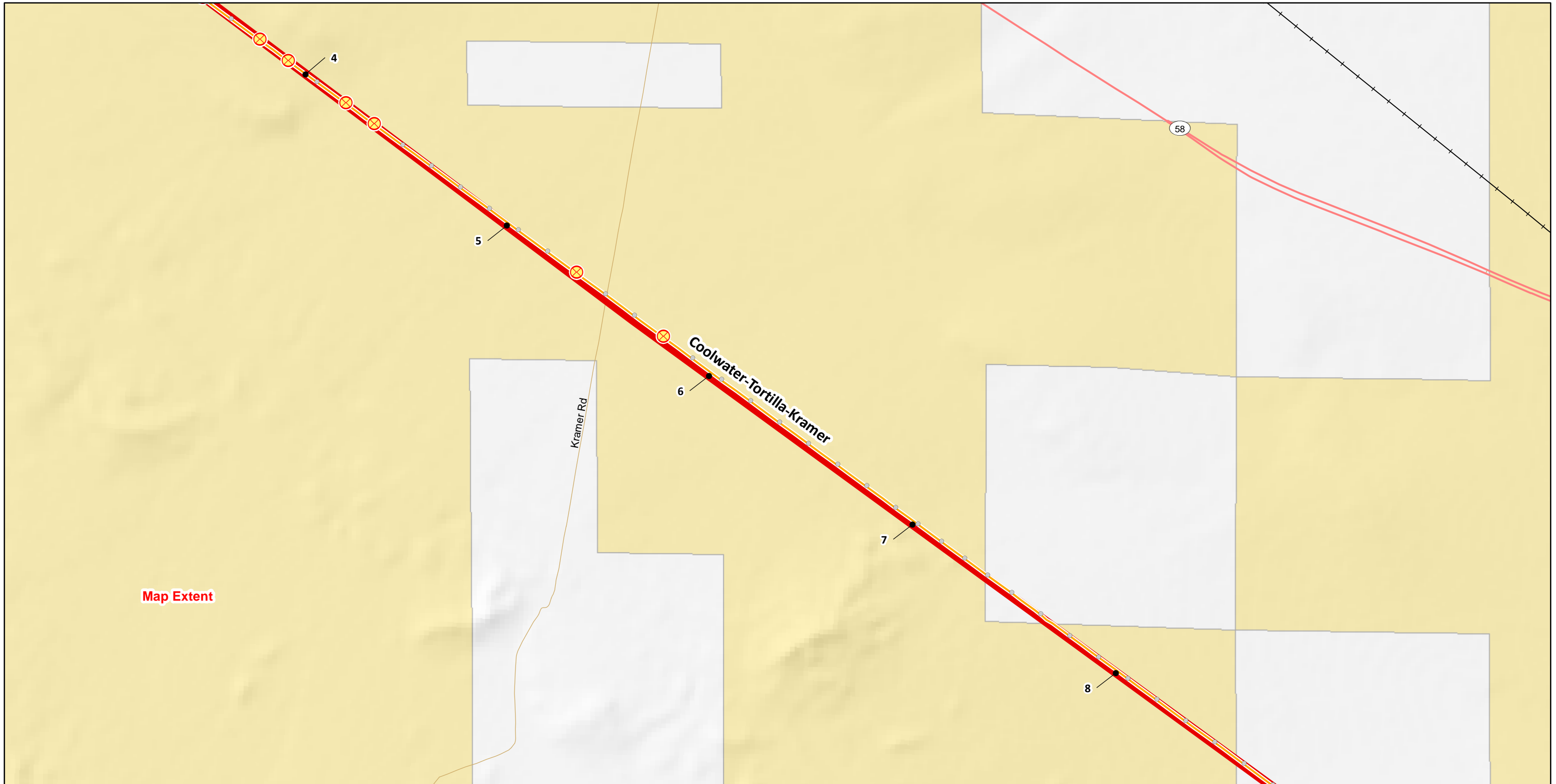
- Milepost
- Substation
- Subtransmission Structures**
- Existing
- ⊗ New-Replace-Existing
- Access Roads**
- ↘ Existing, Access Road
- 115kV Transmission Line**
- ↗ Segment 3N: Coolwater-Kramer
- ↘ Segment 3S: Coolwater-Tortilla-Kramer
- Owner**
- BLM Lands
- Private Land (no color overlay)
- U.S. Military

Ivanpah-Control Overview Map

Segment 3S

Sheet 1





Map Extent

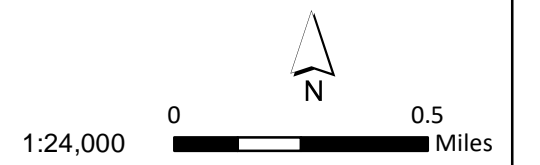


- Milepost
- Subtransmission Structures**
 - Existing
 - ⊗ New-Replace-Existing
- Access Roads**
 - ↘ Existing, Access Road
- 115kV Transmission Line**
 - ↘ Segment 3S: Coolwater-Tortilla-Kramer
- Owner**
 - BLM Lands
 - Private Land (no color overlay)

Ivanpah-Control Overview Map

Segment 3S

Sheet 2





Map Extent

Coolwater-Tortilla-Kramer

Helendale Rd

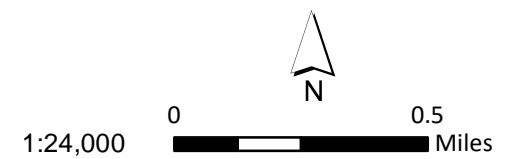


- Milepost
- Subtransmission Structures
 - Existing
 - ⊗ New-Replace-Existing
- Access Roads
 - ↘ Existing, Access Road
- 115kV Transmission Line
 - ↘ Segment 3S: Coolwater-Tortilla-Kramer
- Owner
 - BLM Lands
 - Private Land (no color overlay)

Ivanpah-Control Overview Map

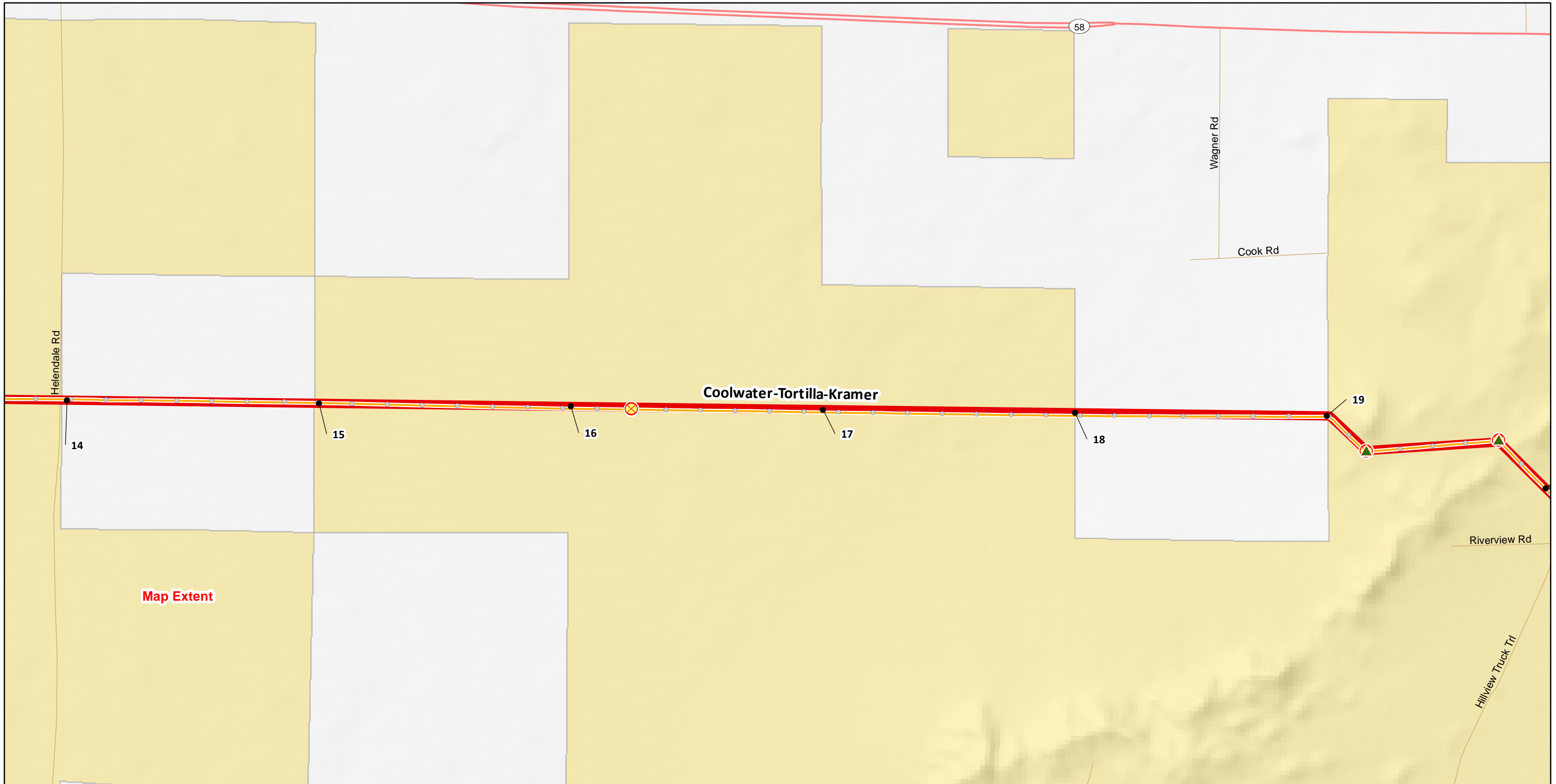
Segment 3S

Sheet 3



1:24,000

0 0.5 Miles



Map Extent

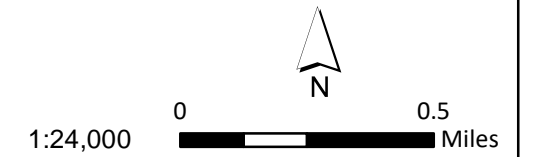


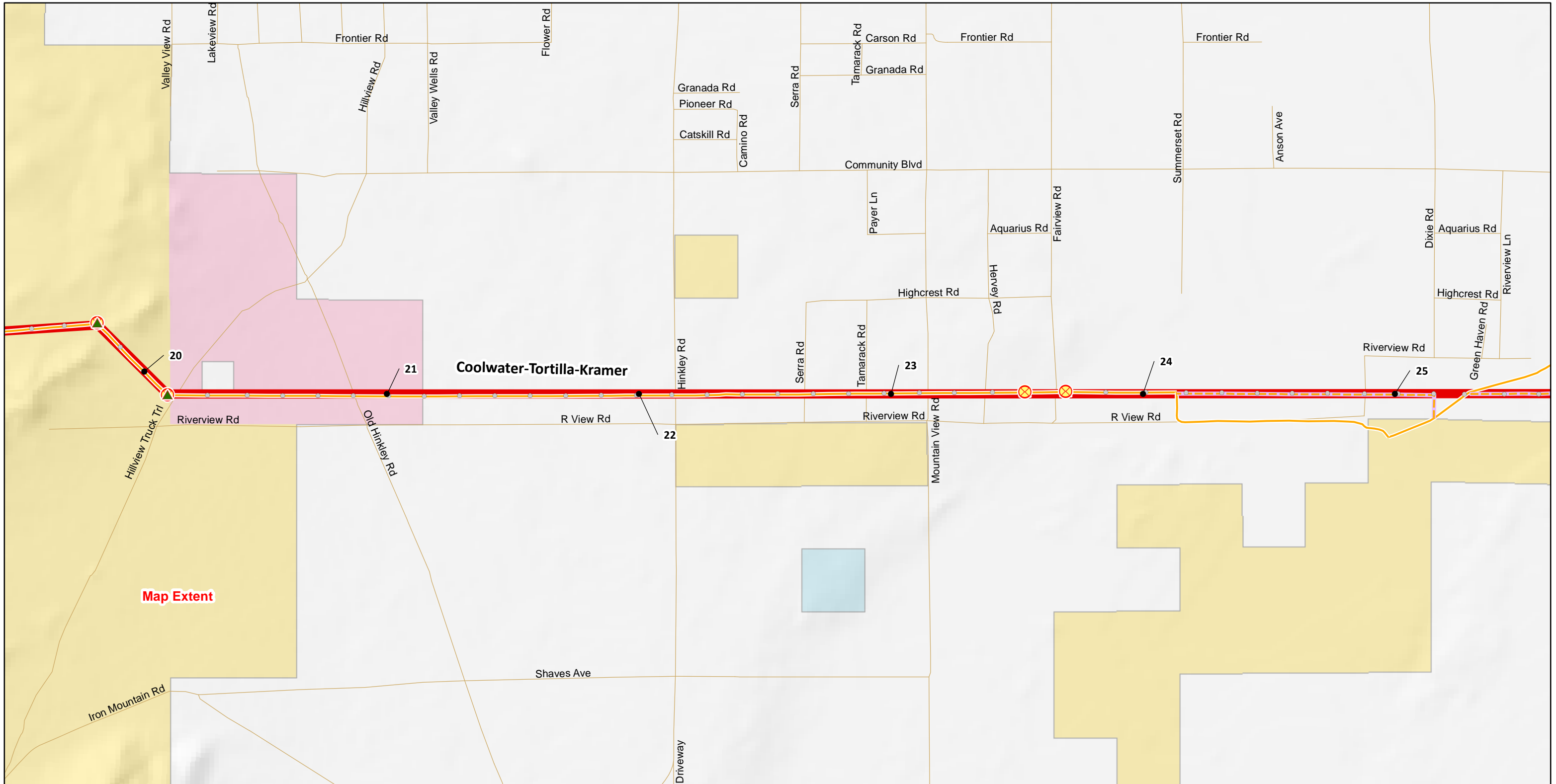
- Milepost
- Subtransmission Structures**
 - Existing
 - ⊗ New-Replace-Existing
 - ▲ Remove
- Access Roads**
 - ↘ Existing, Access Road
- 115kV Transmission Line**
 - ↘ Segment 3S: Coolwater-Tortilla-Kramer
- Owner**
 - BLM Lands
 - Private Land (no color overlay)

Ivanpah-Control Overview Map

Segment 3S

Sheet 4



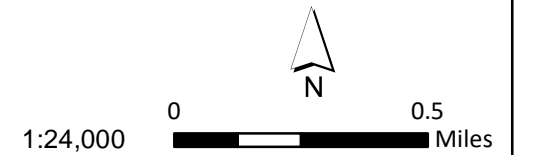


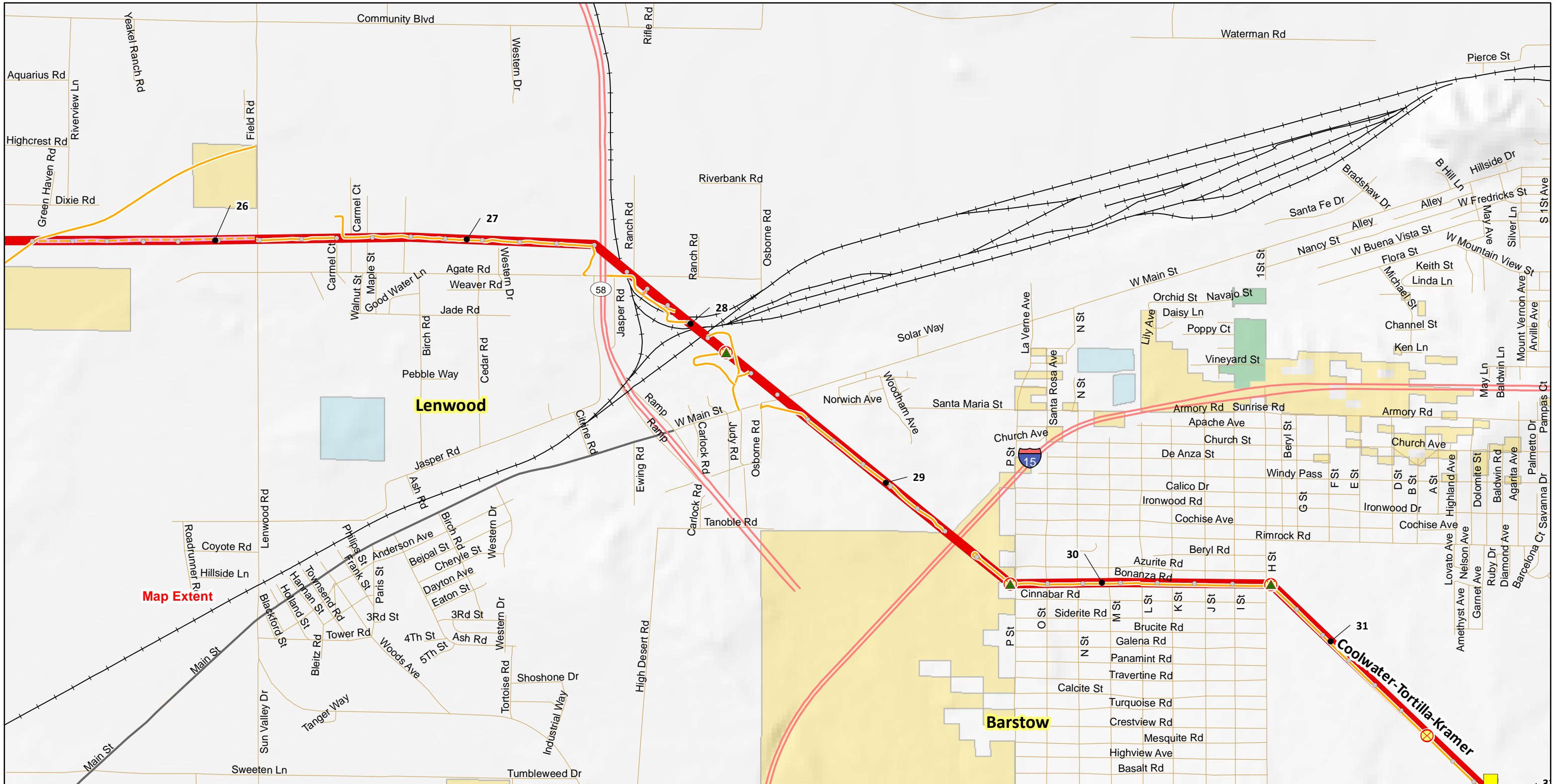
- Milepost
- Existing
- ⊗ New-Replace-Existing
- ▲ Remove
- Access Roads
- Existing, Access Road
- New, Overland Travel
- Segment 3S: Coolwater-Tortilla-Kramer
- Owner
- BLM Lands
- California State Lands Commission
- Private Land (no color overlay)
- U.S. Military

Ivanpah-Control Overview Map

Segment 3S

Sheet 5





Map Extent

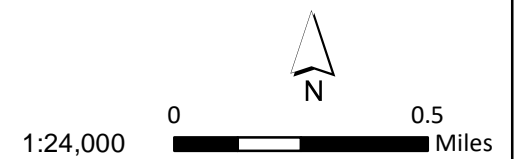


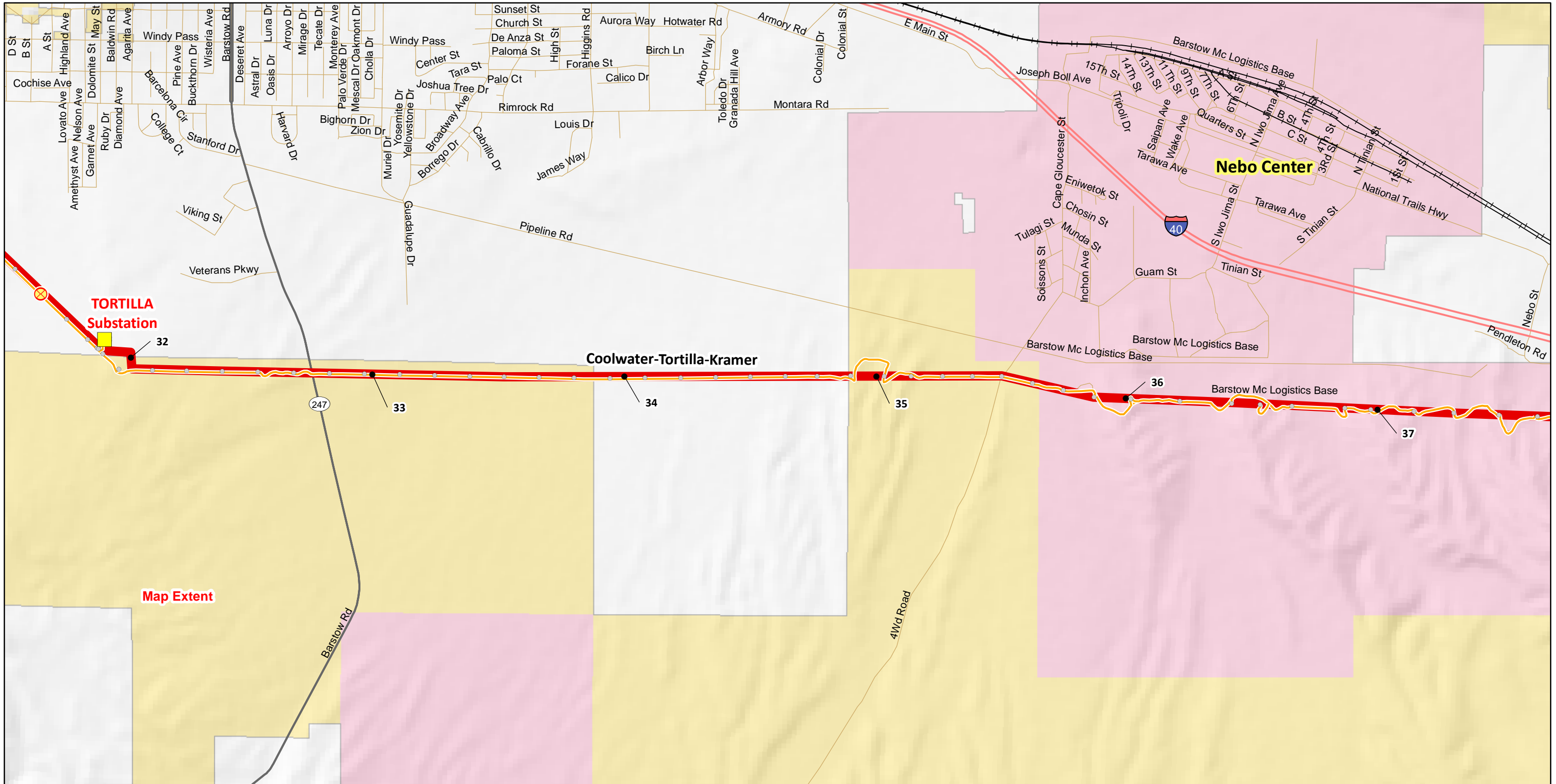
- Milepost
- Substation
- Existing
- ⊗ New-Replace-Existing
- ▲ Remove
- Access Roads
- ⚡ Existing, Access Road
- ⚡ New, Overland Travel
- ⚡ 115kV Transmission Line
- ⚡ Segment 3S: Coolwater-Tortilla-Kramer
- Owner
- BLM Lands
- California State Lands Commission
- LADWP/Local Government
- Private Land (no color overlay)

Ivanpah-Control Overview Map

Segment 3S

Sheet 6



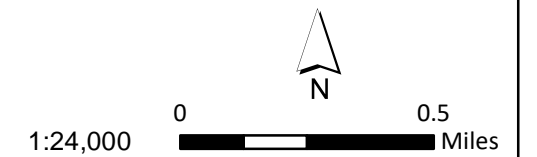


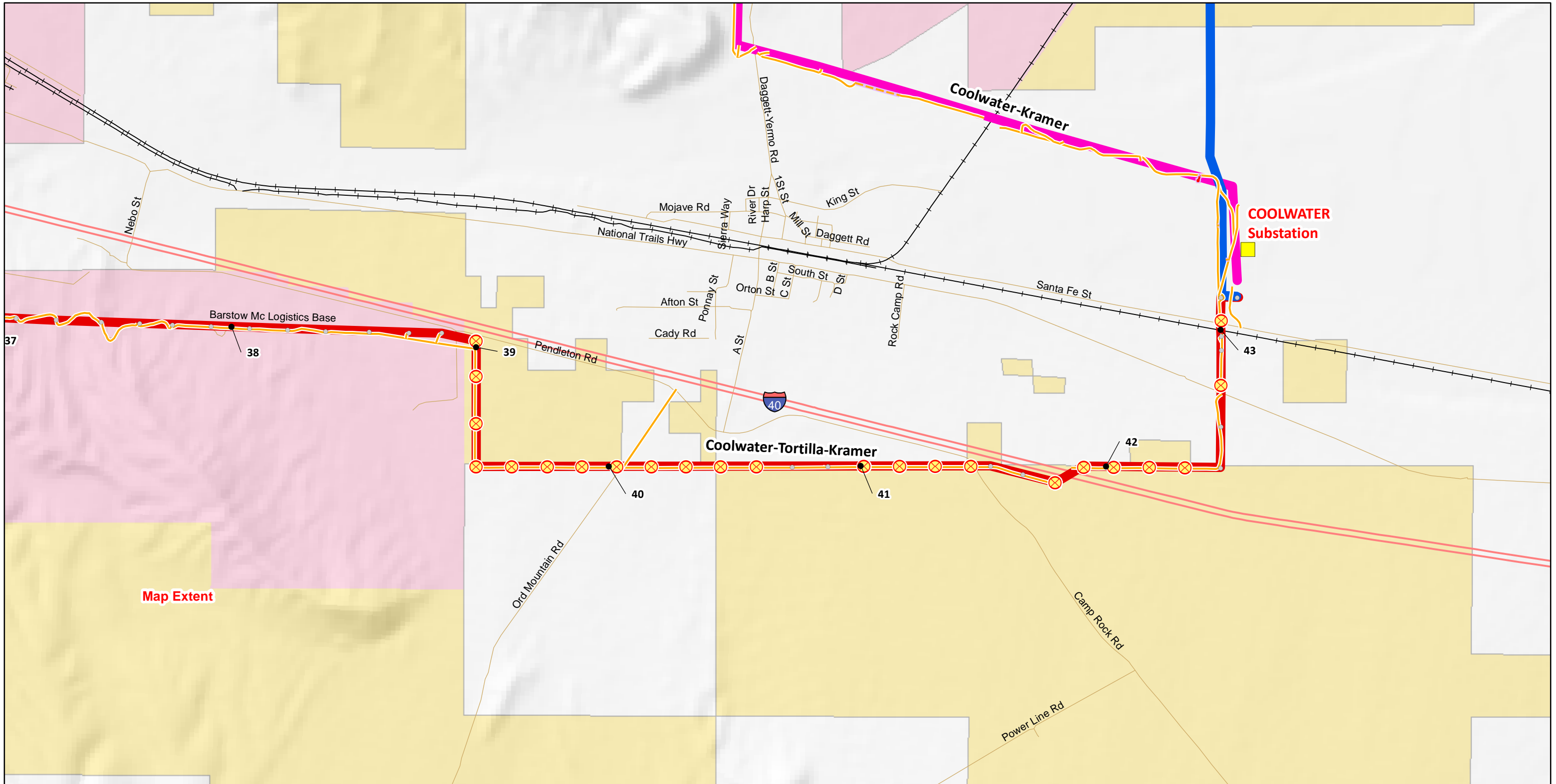
- Milepost
 - Substation
 - Existing
 - ⊗ New-Replace-Existing
 - ⚡ Existing, Access Road
 - Existing
 - ⊗ New-Replace-Existing
 - ⚡ Existing, Access Road
- 115kV Transmission Line**
- ⚡ Segment 3S: Coolwater-Tortilla-Kramer
- Subtransmission Structures**
- Existing
 - ⊗ New-Replace-Existing
 - ⚡ Existing, Access Road
- Owner**
- BLM Lands
 - Private Land (no color overlay)
 - U.S. Military

Ivanpah-Control Overview Map

Segment 3S

Sheet 7





Map Extent



● Milepost

■ Substation

Subtransmission Structures

○ Existing

⊗ New-Replace-Existing

▲ Remove

Access Roads

— Existing, Access Road

— New, Access Road

— New, Overland Travel

115kV Transmission Line

— Segment 4: Baker-Dunn-Siding-Coolwater

— Segment 3N: Coolwater-Kramer

— Segment 3S: Coolwater-Tortilla-Kramer

Owner

■ BLM Lands

□ Private Land (no color overlay)

■ U.S. Military

Ivanpah-Control Overview Map

Segment 3S

Sheet 8

1:24,000

