



Aspen Environmental Group

PROJECT MEMORANDUM PG&E JEFFERSON-MARTIN 230 kV TRANSMISSION PROJECT

To: Billie Blanchard, CPUC
From: Vida Strong, Aspen Project Manager
Date: February 1, 2005
Subject: Weekly Report #2: January 23, 2005 – January 29, 2005
CPUC Environmental Monitor (EM): Jody Fessler

Aspen EM Jody Fessler was on site from January 24 through 27 on Segment 1 to monitor construction activities.

SEGMENT 1:

Summary of Activity:

Construction activities continued during the subject week with excavation of manholes and the placement of vaults. Rain fell in the project area on Tuesday, Wednesday, and Thursday. PG&E Environmental Inspectors (EI) were on-site to insure compliance with the Storm Water Pollution Prevention Plan (SWPPP) and other mitigation measures. Two PG&E biological monitors were on-site to watch for sensitive species during construction. The following activities occurred on Segment 1 during the subject week:

1. On January 24, crews started excavating Manhole #9 (Station #139+00) on Canada Road near the Pulgas Water Temple. The serpentine soil was transported to Ox Mountain landfill in Half Moon Bay and was handled as an inhalation hazard. Crews finished digging the manhole vault pit to a level of 12 feet, 10 inches. Crews shored the manhole pit in the late afternoon of the first day, compacted the bottom of the pit, and placed pea gravel in the bottom. A large crane was used to lower the vault into the excavation. Once the vault was set, crews poured cement slurry around and over the manhole vault. See Figure 1 through 4. After the load of cement slurry was emptied, the trucks washed-out in the vault pit. The crew finished with the pouring of the asphalt and compacting the road. Once the asphalt paving was done, the crew added soil to the shoulder of the road for temporary stabilization. They will have to dig it out and replace it with engineered soil as specified by the County. The CPUC EM observed crews painting lines back on the road and removing the k-rails.
2. Traffic controls (signs, cones, and later, lights) were set-up on Canada Road. Traffic control flaggers were in place at either end of the construction area along Canada Road. Large vehicles were parked on either side of the manhole vault to keep vehicles and people from entering the area. Traffic cones were left in place blocking off the eastern lane. Bright lights were set-up on either end of the project. Two crew members stayed on-site at night to make sure that no one entered the construction area. A biological monitor also stayed at the site in case a crew member needed to move their vehicle.
3. Storm water from the rains on Wednesday that ran along the east side of the road was re-routed around the vault site through a black corrugated pipe with sandbags anchoring it on either end.
4. On January 27, crews started setting up Biological Exclusion Fencing along the west side of the road at Manhole #7 (Station #102+00 to 108+00) south of the Pulgas Water Temple on Canada Road. Crews were also setting up biological exclusion fencing along the west side of the road at Manhole #8 (Station # 125+00 to 119+00) just south of the Pulgas Water Temple on Canada Road. Excavation at these two locations is scheduled for January 31.

5. The CPUC EM observed a crew painting the location of the Manhole #7 and Manhole #8 vault pits on Canada Road for asphalt cutting on January 31. The crew started cutting the asphalt for Manhole #8 vault pit (see Figure 5), but discovered that the asphalt was much thicker than they thought, and had to cut over it again with a larger blade.
6. On Friday, January 28, a small crew conducted clean-up activities along Canada Road in preparation for the weekend traffic. Crews also cut the asphalt for Manhole #7 on Friday.

Environmental Compliance Activities:

1. On January 24, the CPUC EM noted that the porta-potties were parked too close to the creek. The CPUC EM spoke with PG&E's EI and the EI asked crews to move the facilities further away from the creek. Crews were observed moving the porta-potties approximately 100 feet away from the creek.
2. Dave Johnston of the California Department of Fish and Game (CDFG) visited the site on January 24 and inspected the biological exclusion fencing that was set-up last week. He explained why the fencing was inadequate the way it was set-up, and explained to the EIs and construction management how it should be set-up to prevent the movement of California red-legged frog into the work area. The CPUC EM observed crews adding silt fabric and sandbags to the west side of the fence.
3. On January 25, 26, and 27, the CPUC EM observed that the sites were in compliance with mitigation measures and other permit requirements. Erosion controls were in place around the construction areas. The CPUC EM checked trucks for spill kits and verified that project personnel had completed environmental training.

SEGMENT 5:

Summary of Activity:

The CPUC EM attended the Segment 5 pre-construction meeting at the Black & Veatch office in Hayward. The crews are scheduled to perform surveying and pot-holing next week and then start excavation February 7.

NOTICES TO PROCEED (NTP):

On January 10, 2005, NTP #1 was issued by CPUC to construct the Segment 1 (underground) and Segment 5 (unincorporated San Mateo County only) portions of the Jefferson-Martin 230 kV Transmission Project within San Mateo County.

VARIANCE REQUESTS:

No Variance Requests were submitted for review during the subject week.

TABLE 1
VARIANCE REQUEST STATUS
 (Updated 02-01-05)

Variance Request #	Date Submitted	Description	Status	CPUC Approval Date
1	1-14-05	40 Edwards Court, Burlingame – Paved parking lot that is fenced to be used as a staging yard	Approved	1-18-05

UPCOMING ITEMS: PG&E holds weekly meetings to review issues and upcoming events for Segment 1 on Monday (1:00 pm, San Mateo BV office) and Tuesday (8:00 a.m, Hayward BV office), and a weekly meeting for Segment 5 on Tuesdays (9:00 am, Hayward BV office).

AGENCY PERSONNEL CONTACTS: On January 24, a representative from the CDFG conducted a site visit near Manhole #9 along Canada Road and approved how the biological exclusion fencing should be installed.

Photographs



Figure 1 – Exclusion fencing along west side of Cañada Road just south of Manhole #9 on Segment 1, January 24, 2005.

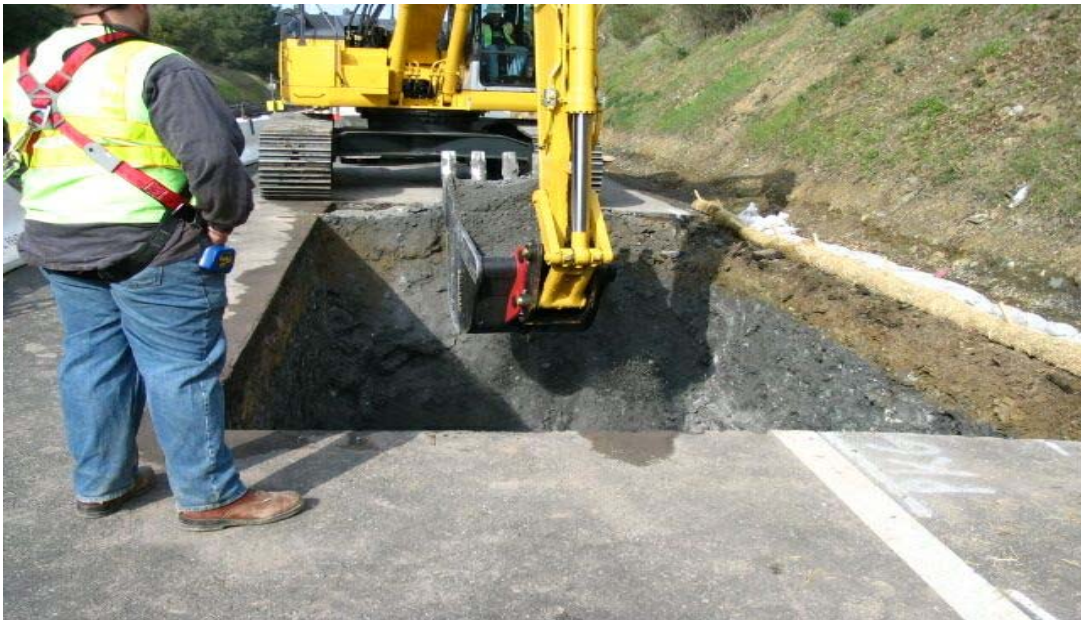


Figure 2 – Excavating Manhole #9 vault pit (station # 139+00) along Cañada Road on Segment 1, January 24, 2005.



Figure 3 – Crane ready to lower Manhole #9 vault on Segment 1, January 25, 2005.



Figure 4 – Crews contouring cement slurry over Manhole #9 vault on Segment 1, January 26, 2005.



Figure 5 – Crews cutting asphalt for Manhole #8 vault pit on Segment 1, January 27, 2005.