



Aspen *Environmental Group*

PROJECT MEMORANDUM PG&E JEFFERSON-MARTIN 230 kV TRANSMISSION PROJECT

To: Billie Blanchard, CPUC
From: Vida Strong, Aspen Project Manager
Date: June 28, 2005
Subject: Weekly Report #23: June 19, 2005 – June 25, 2005
CPUC Environmental Monitors (EM): Jody Fessler and Jenny Slaughter

CPUC EM Jody Fessler was on site June 21st through June 24th along Segments 1, 2, 3, 4, and 5.

CPUC EM Jenny Slaughter was on site June 20th through June 23rd along Segments 1, 2, 3, 4, and 5.

SEGMENT 1:

Summary of Activity:

Construction activities continued during the subject week with the excavation of trenches, installation of conduit, excavation of stub-outs at manholes, excavation of a manhole pit, and installation of a manhole vault. The weather was partly sunny and partly cloudy throughout the week. PG&E Environmental Inspectors (EIs) were on-site to ensure compliance with mitigation measures adopted in the EIR, Storm Water Pollution Prevention Plan (SWPPP), and other permit requirements. At least four PG&E EIs were on-site during daytime activities to inspect environmental compliance at the work sites and six to eight biological monitors were located on the west side of Cañada Road and Skyline Boulevard to watch for frogs and snakes, and to make sure these species did not enter the work site. The following activities occurred on Segment 1 during the subject week:

1. On June 20th, crews started excavating trench between Manhole #24 and Manhole #26 on Skyline Boulevard during the day shift (see Figure 1). A pilot vehicle was used in this area with a biological monitor riding along to look for snakes in the road. The soil from the trenching activities was transported to Ox Mountain landfill in Half Moon Bay (Class 3 facility). Crews shored the trench as they excavated. Conduit was installed in the trench as the excavation progressed and cement slurry was poured around the conduit as it was installed. Approximately 2622 linear feet of conduit was installed throughout the week. Biological monitors were placed on the west side of the biological exclusion fencing (BEF) along Skyline Boulevard. There were at least three PG&E EIs in the construction zone at all times. A small crew was on-site during the night to watch the construction area and to do some light work. A PG&E EI also stayed at the site at night to observe construction, watch for animals, and check under vehicles and equipment in case a crew member needed to move their vehicle. Crews conducted asphalt paving of the trench on Friday and Saturday. Clean-up activities were done on Friday and Saturday. All materials and traffic controls were removed from the construction area at the end of the day Saturday.
2. Crews began the excavation of Manhole #24 stub-outs on Skyline Boulevard during the day shift on Monday. Crews worked throughout the week at the stub-outs installing conduit and pouring cement slurry. The area was paved over on Saturday.
3. Crews conducted manhole prep work this week at Manholes #1 through #8 along Cañada Road. Traffic signs and cones were set up around the manhole to direct traffic around the work area.

4. Proofing activities were conducted during the night shift throughout the week on Cañada Road. Crews were blowing string, pulling tape, pulling sponges, pulling wire brush, and pulling mandrels through the conduit. Grouting and cleaning of the manholes was also done. Racking crews worked during the day placing conduit racks in Manholes #1 through #7.
5. Night trenching work continued on Skyline Boulevard this week starting the night of June 19th. Skyline Boulevard/Highway 35 was closed to public traffic from the Crystal Springs Dam to the Highway 35/Highway 92 Interchange from 9:00 p.m. Sunday to 5:00 a.m. Monday, and from 8:00 p.m. to 5:00 a.m., Monday through Friday. From Manhole #19, crews continued to trench south, installed conduit, and poured cement slurry in the trench. Approximately 643 linear feet of conduit was installed in the Caltrans area throughout the week. The soil from the trenching activities was transported to Ox Mountain landfill in Half Moon Bay (Class 3 facility). On Friday morning, trench plates were placed over the trenched area that was not completed yet in preparation for the weekend. BEF was installed at this location. One or two PG&E EIs were always on-site to ensure environmental compliance.
6. On the night of June 19th, excavation began of Manhole #22A on Skyline Boulevard. The manhole was shored and gravel placed in the bottom of the pit during the night shift. The manhole vault was installed on Tuesday night, the area backfilled with cement slurry on Wednesday, Thursday, and Friday, and the area paved over on Saturday.
7. Traffic controls (signs, cones, and lights) were set up on Cañada Road and Skyline Boulevard at the construction sites. Traffic control flaggers were in place at either end and in the middle of the construction areas along Skyline Boulevard. A pilot vehicle was being used where there were stretches of traffic controls longer than 350 feet to slow traffic down as well as look out for San Francisco garter snakes. A biologist rode along in the pilot vehicle to look for snakes and frogs that may have gotten in the road. Traffic lights were set up at either end of traffic controls at night. Bright lights were set up at either end of traffic controls and in the construction zone at night.
8. Crews continue to use their staging yards at 40 Edwards Court in Burlingame and the southern Caltrans site along the Caltrans right-of-way on Highway 92/Highway 35.
9. No San Francisco garter snakes (SFGS) were sighted during the subject week along Segment 1. Two California red-legged frogs were seen each day at two separate locations approximately 1,000 feet apart.
10. On Friday and Saturday, crews conducted clean-up activities along Cañada Road, in the Caltrans area, and along Skyline Boulevard in preparation for the weekend.

Environmental Compliance Activities:

Bird surveys continued throughout the week along the segment from the Jefferson Substation north along Cañada Road and Skyline Boulevard to Hayne Road.

Three non-compliances were issued by PG&E's EIs for Segment 1. Two were issued on June 20th for construction vehicle off the road onto the vegetated road shoulder, and the second for an overflowing dumpster in the yard. The third was issued June 25th for chronic hydraulic leaks from a piece of equipment which the crew had been asked twice before to fix.

On June 20th, the Segment 1 E.I. notified the CPUC EM that there was a project vehicle parked on the vegetated road shoulder near the contractor yard along highway 92. Approximately 60-feet of vegetation was disturbed and a CPUC Project Memorandum was issued.

On June 22nd, the CPUC EM noted some oil spots on the road in the trenching area between Manhole #26 and Manhole #24, some of which had kitty litter poured over them to soak up the oil. The CPUC EM spoke with the PG&E EI who informed her that Construction Management had already been asked to clean up the oil spots. The PG&E EI was also noting the vehicle numbers of trucks that were leaking oil. The information was then being passed on to B&V Construction Management, who was then passing the information on to their subcontractor (InfraSource). The CPUC EMs observed that all other Segment 1 construction activities were in compliance with mitigation measures adopted in the EIR and other permit requirements. Erosion controls were in place around the construction areas.

SEGMENT 2, UNDERGROUND & OVERHEAD

Summary of Activity

A Notice to Proceed (NTP) was issued for the Segment 2 underground portion, not including SFPUC lands, on March 8th. However, no NTP has been issued for the overhead component of Segment 2.

The CPUC EMs conducted site visits of the underground segment throughout the week. Crews were working at Manhole #33 stub-outs and trenching between Manholes #36 and #34 and working in the trench along Trousdale Drive. A PG&E EI was on-site during construction to ensure compliance with the mitigation measures adopted in the EIR, SWPPP, and other permit requirements. The following activities occurred on Segment 2 during the subject week:

1. On June 20th, trench excavation continued between Manhole #36 and Manhole #34 on Skyline Boulevard throughout the week. The trench was excavated throughout the week, conduit installed, and cement slurry poured over the conduit. Approximately 710 linear feet of conduit was installed in the trench during the week. Paving was done on Thursday and Friday in this area.
2. Crews worked at Manhole #33 stub-outs throughout the week. The area was excavated and shored, conduit installed, and cement slurry poured over and around the conduit. The stub-outs were paved over on Friday.
3. On Friday, June 24th, crews un-plated the trench area on Trousdale Drive and marked out an area on the north side of the trench for the placement of a communication vault. The communication vault was originally suppose to be installed on the south side of the trench, but due to an unmarked culvert cannot be placed on that side.
4. Traffic controls (signs, cones, and flaggers) were set up on Trousdale Drive and Skyline Boulevard at the trenching location, the manhole locations during active construction.
5. Crews continue to use the Northern Caltrans Staging Yard at the corner of Skyline Boulevard and Hayne Road. Crews are also using the Staging Yard at 60 Edwards Court in Burlingame to store equipment and materials.
6. Clean-up activities were conducted at the end of each day at the active construction sites. A street sweeper is running daily along Skyline Boulevard from 2:00 p.m. to 6:00 p.m.

Environmental Compliance Activities:

Bird surveys continued throughout the week from Hayne Road north along Skyline Boulevard to Trousdale Drive for the underground segment, and from Trousdale Drive north along San Andreas Lake west and parallel to Highway 280, and Skyline Boulevard to Glenview Drive for the overhead segment.

No non-compliances were issued by PG&E EIs during the subject week for Segment 2.

On June 22nd, the CPUC EMs observed the following issues: (1) Three construction vehicles were parked on a side street off Skyline Boulevard and the right-of-way. The CPUC EM spoke with B&V's Assistant Segment Construction Manager and reminded him for the second time that no construction vehicles were to be staged off the right-of-way. (2) A front-loader was observed depositing soil in an end-dump that was parked outside of the construction zone across an active lane of traffic. The CPUC EM spoke with B&V's Assistant Segment Construction Manager about the activity. The Assistant Segment Construction Manager had the end-dump move into the active construction zone. (3) In the trenching area, the CPUC EM observed a construction worker set a can of gasoline on a straw wattle along the road adjacent to a wet drainage (see Figure 2). The CPUC EMs observed that all other Segment 2 underground construction activities were in compliance with mitigation measures adopted in the EIR and other permit requirements. Erosion controls were in place around the construction areas.

PG&E continues to work with CDFG regarding woodrat removal activities that previously occurred along the overhead portion of Segment 2 without CDFG concurrence. PG&E is also consulting with USFWS and CDFG regarding biological resources along the entire overhead segment.

SEGMENT 3:

Summary of Activity:

Construction continued at Manhole #39 this week along Segment 3. The week's activities are as follows:

1. Work continued this week at Manhole #39 on Glenview Drive see (see Figure 3). Crews finished backfilling the vault and compacted base rock on Tuesday. The area was paved over on Wednesday. On Thursday, a street sweeper was seen at that location cleaning the street.
2. Pot-holing activities were conducted along Huntington Street at the north end and south end of the street within the segment. The activities included the use of a small back-hoe to excavate some small trenches in the road for locating utilities.
3. Traffic controls were set up around the work area. Signs and cones were set up around the work area and a flagger was in place at the construction site to help direct traffic.
4. Crews continue to use their staging yard under Highway 380 just east of Huntington.

Environmental Compliance Activities:

Bird surveys continued throughout the week and nests were spot-checked for disturbance caused by construction activity.

No non-compliances were issued by PG&E EIs during the subject week for Segment 3.

The CPUC EMs observed that all Segment 3 construction activities were in compliance with mitigation measures adopted in the EIR and other permit requirements. Erosion controls were in place around the construction areas.

SEGMENT 4:

Summary of Activity:

Segment 4 construction continued this week with trenching activities between Manholes #49 and #50 in the BART right-of-way and between Manhole #56 and Manhole #58 along Lawndale Drive. A PG&E EI

was on-site during construction to ensure compliance with the mitigation measures adopted in the EIR, SWPPP, and other permit requirements. The following activities occurred on Segment 4 during the subject week:

1. On Monday, June 20th, installation of conduit continued between Manhole #48 and South Spruce Street in the BART right-of-way. Crews continued to work at this location throughout the week. Approximately 1200 linear feet of conduit was installed throughout the week. The trench area had chain link fence sections placed over the trenches at the end of each day and the construction zone was surrounded by snow fencing. No vehicles can access this area after work hours without unlocking a chain across the access road.
2. Trenching activities started this week north of South Spruce Street in the BART right-of-way. The trenching began just south of Manhole #50 and is moving north. The B&V Segment Project Manager did the soil/air monitoring at that site this week. Construction crews also did visual and odor monitoring for contaminants at the site.
3. Trenching activities continued throughout the week between Manhole #56 and Manhole #58 within the medium of Lawndale Drive. Crews excavated trench, installed conduit, poured cement slurry over and around the conduit, and backfilled the area with native soil. Traffic controls, including cones and signs, were set up along Lawndale Drive directing cars around the work area. A street sweeper cleaned the road several times a day at that location.
4. Pot-holing activities were conducted on Tuesday, June 21st, just south of the South San Francisco BART station in the BART right-of-way.
5. No crews worked on Friday along Segment 4.

Environmental Compliance Activities:

Bird surveys continued throughout the week along the BART right-of-way.

No non-compliances were issued by PG&E's EIs this week for Segment 4.

On June 20th, the CPUC EM was notified that the contractor had been utilizing an adjacent yard to the one that was approved by Variance #6. The CPUC EM checked the yard and found that the contractor had some materials and equipment inside the adjacent yard. According to the contractor, both areas had been approved by the landowner and that both were originally intended for project use; however, only one was submitted for approval to the CPUC. PG&E was informed that a modification to Variance #6 would have to be submitted with all of the required resource survey information to the CPUC for approval. They were also told that no new construction activity could take place in the new staging area until the yard was approved.

On June 22nd, a cement truck leaked red slurry onto Lawndale Drive for a distance of about 200-feet (see Figure 4). The slurry was removed from the street using shovels and brooms, but the street sweeper was still needed to finish cleaning the spill and was dispatched to the site.

On June 24th, Black & Veatch submitted the finalized revised Personnel Monitoring Plan for the Northern Portion of Segment 4 (BART) based on Mr. Thurber's comments of June 21st.

The CPUC EMs observed that all Segment 4 construction activities were in compliance with mitigation measures adopted in the EIR and other permit requirements. Erosion controls were in place around the construction areas.

SEGMENT 5:

Summary of Activity:

Very little construction occurred along Bayshore Boulevard throughout the week in the City of Brisbane. There was a PG&E EI on-site to ensure compliance with mitigation measures adopted in the EIR, SWPPP, and other permit requirements. The following activities occurred on Segment 5 during the subject week:

1. Trench was excavated on Monday and Tuesday during the day near the intersection of Bayshore Boulevard and Main Street. Approximately 180 linear feet of conduit was installed throughout the week.
2. During the night shift, crews worked at the intersection of Bayshore Boulevard and Guadalupe Canyon Parkway (see Figure 5). Trench was excavated, conduit installed and cement slurry poured over and around the conduit. Work at this intersection is only allowed at night by the City of Brisbane Encroachment Permit.
3. The construction zone along Bayshore Boulevard is in the middle of the road with one lane of south-bound traffic blocked off. K-rails run along both sides of the construction zone and the only access to the construction zone is at either the south end or north end of the zone.
4. Traffic controls (signs, cones, and lights) were set up on Bayshore Boulevard from the intersection of Guadalupe Canyon Parkway to Geneva Street in Brisbane. Bright lights were set up on either end of the project at night. A small night crew stayed on-site at night and did some light work. Safety monitors were in place in the Controlled Access Zone (CAZ) to keep track of how many people were in the construction area and if they were CAZ trained.
5. Traffic controls (signs and cones) were set up on Guadalupe Canyon Parkway and one lane of east-bound traffic was closed for the staging of end dumps and cement trucks that were waiting to enter the work zone along Bayshore Boulevard.
6. An Encroachment Permit for construction in Daly City is expected to be issued after July 5th.
7. Conduit still has to be attached to the bridge at the top of San Bruno Mountain on Guadalupe Canyon Parkway. Once the design for the brackets is finalized, the subcontractor will return and will complete the bridge work.
8. Construction crews continue to use their staging yard at the corner of North Access Road and South Airport Boulevard for the storage of equipment, materials and two trailers they are using for office space. Three Baker tanks are on site at that location.

Environmental Compliance Activities:

Bird surveys continued throughout the week along the segment from approximately Orange Court east along Guadalupe Parkway and Bayshore Boulevard to the Martin Substation.

Biological monitors spot-checked nests for disturbance along the active construction zones.

A Native American Monitor was on site Monday and Tuesday to observe excavation on Bayshore Boulevard from Main Street north.

No non-compliances were issued by PG&E's EIs during the subject week for Segment 5.

The CPUC EMs observed that all other Segment 5 construction activities were in compliance with mitigation measures adopted in the EIR and other permit requirements. Erosion controls were in place around the construction areas.

NOTICES TO PROCEED (NTP):

Table 1 presents the NTPs issued by the CPUC for the Jefferson-Martin Project to date.

**TABLE 1
NOTICES TO PROCEED
(Updated 6-28-05)**

NTP #	Date Issued	Description
#1	1-10-05	Segment 1, underground only Segment 5, unincorporated San Mateo County only
#2	3-08-05	Segment 2, underground only, not including SFPUC lands
#3	3-11-05	Segment 5, incorporated
#4	3-11-05	Segment 3
#5	3-30-05	Segment 4

ENVIRONMENTAL COMPLIANCE:

One Non-Compliance Report (NCR) and six Project Memorandums (PMs) have been issued by the CPUC EMs for the project to date (see Table 2).

**TABLE 2
ENVIRONMENTAL COMPLIANCE STATUS
(Updated 6-28-05)**

Project Memo or NCR	Date Issued	Description	Follow-Up Activities
NCR (Level 3)	2-01-05	Segment 2 Overhead – Dismantling and removal of woodrat nests along the overhead route without consulting with CDFG.	PG&E consulting with CDFG on how to proceed.
PM	2-09-05	Segment 1 – Breach of trenching activities into vegetated drainage on east side of Cañada Road between MH #7 and MH #8.	PG&E consulting with CDFG and USFWS on how to proceed.
PM	2-16-05	Segment 5 – Dewatering of Manhole #67 vault pit without consulting with RWQCB on handling of water	PG&E consulting with RWQCB on how to proceed with storm water and groundwater.
PM	3-04-05	Segment 1 – Hummingbird nest found near Manhole #5 on Monday, Feb. 28 th , and not reported to CPUC or CDFG until Thursday, March 3 rd .	PG&E discussing better communication between PG&E and sub-contractors.
PM	5-27-05	Segment 2 Underground – Construction went past the City of Burlingame’s Encroachment Permit on May 25 th , and May 26 th .	PG&E response submitted 6-14-05.
PM	5-27-05	Segment 2 Underground – Several traffic control violations were observed. A traffic control flagger left his post several times which endangered the public.	PG&E response submitted 6-14-05.
PM	6-01-05	Segment 1 – End dump parked on vegetation in the Caltrans right-of-way disturbing vegetation	PG&E response submitted 6-15-05.
PM	6-20-05	Segment 1- Construction vehicle parked on vegetation near the Caltrans yard	PG&E response received 6-22-05

VARIANCE REQUESTS:

Modification to Variance Request #6 for the expansion of a Segment 4 construction yard as approved under Variance Request #6 was submitted on June 22.

TABLE 3
VARIANCE REQUEST STATUS
(Updated 6-28-05)

Variance Request #	Date Submitted	Description	Status	CPUC Approval Date
1	1-14-05	40 Edwards Court, Burlingame – Paved parking lot that is fenced to be used as a staging yard.	Approved	1-18-05
2	2-04-05	Staging yard, Airport Boulevard & North Access Road., South San Francisco.	Approved	2-09-05
3	2-22-05	Change compliance timing for Mitigation Measure U-1c, corrosion, from pre-construction to during construction.	Approved	3-04-05
4	4-28-05	Staging yard, Herman Street and Forest Lane, City of San Bruno	Approved	5-03-05
5	5-12-05	Jefferson Substation Expansion Area – Cap well, empty water out of tank into truck, and remove tank from property	Approved	5-20-05
6	5-24-05	Staging yard for Segment 4 construction, intersection of Antoinette Lane and Mission Road, City of South San Francisco.	Approved	5-26-05
6 modification	6-22-05	Additional staging yard for Segment 4, next to yard approved in Variance #6.	Under Review	
7	06-06-05	Intrusion into vegetated areas at several locations along Segment 1.	Approved	6-13-05

UPCOMING ITEMS:

PG&E holds the following weekly meetings to review issues and upcoming events:

- Segment 1 on Friday (12:00 p.m., San Mateo B&V office) and Tuesday (8:00 a.m., Hayward B&V office);
- Segment 2 on Friday (10:00 a.m., San Bruno B&V office) and Tuesday (9:30 a.m., Hayward B&V office);
- Segment 3 on Tuesday (11:00 a.m., Hayward B&V office);
- Segment 4 on Monday (1:00 p.m., San Bruno B&V office) and Tuesday (10:15 a.m., Hayward B&V office);
- and
- Segment 5 on Monday (3:00 p.m., South SF Mueller/InfraSource Staging Yard) and Tuesdays (8:45 a.m., Hayward B&V office).

AGENCY PERSONNEL CONTACTS:

The CPUC EMs spoke with the BART Inspector, the City of Colma Inspector, the City of Burlingame Inspector, and the City of Brisbane Inspector several times throughout the week.

Photographs



Figure 1 – Trenching activities between Manholes #24 and #25, Segment 1, June 22, 2005



Figure 2 – Location of gas can staged near roadside drainage in trenching area on Skyline Boulevard near Manhole #35, Segment 2 Underground, June 22, 2005



Figure 3 – Crews compacting base rock over backfilled Manhole #39 vault, Segment 3, June 21, 2005



Figure 4 – Red cement slurry spill along Lawndale Drive in the Town of Colma, Segment 4, June 23, 2005.

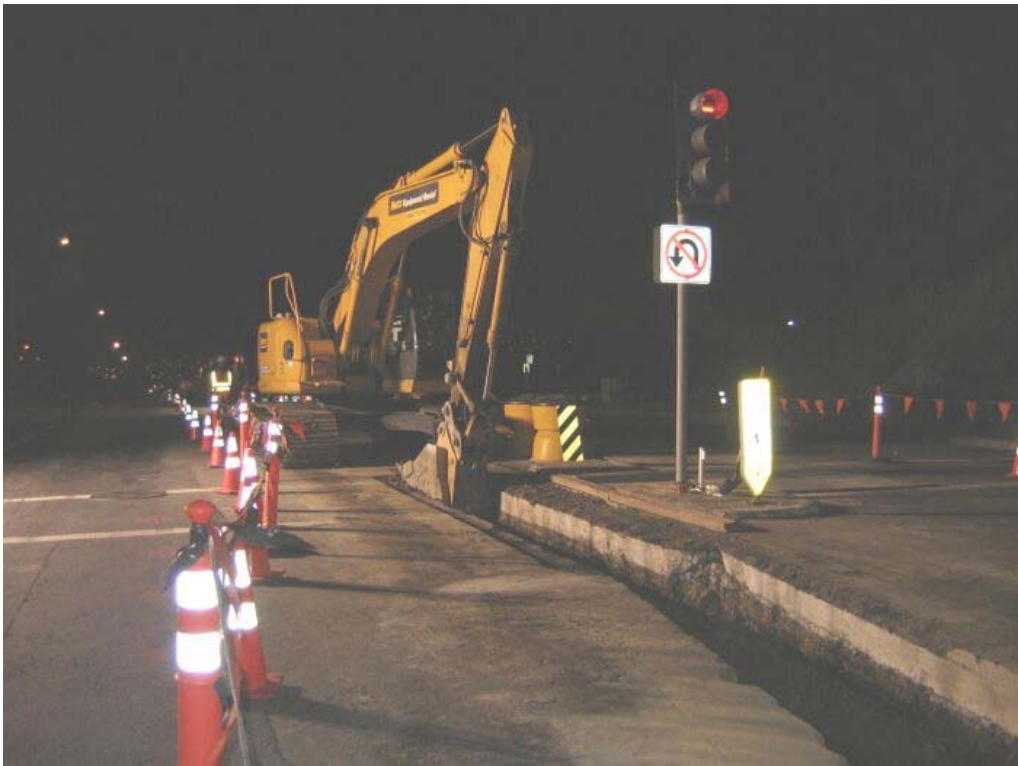


Figure 5 – Night work at the intersection of Bayshore Boulevard and Guadalupe Canyon Parkway in the City of Brisbane, Segment 5, June 22, 2005