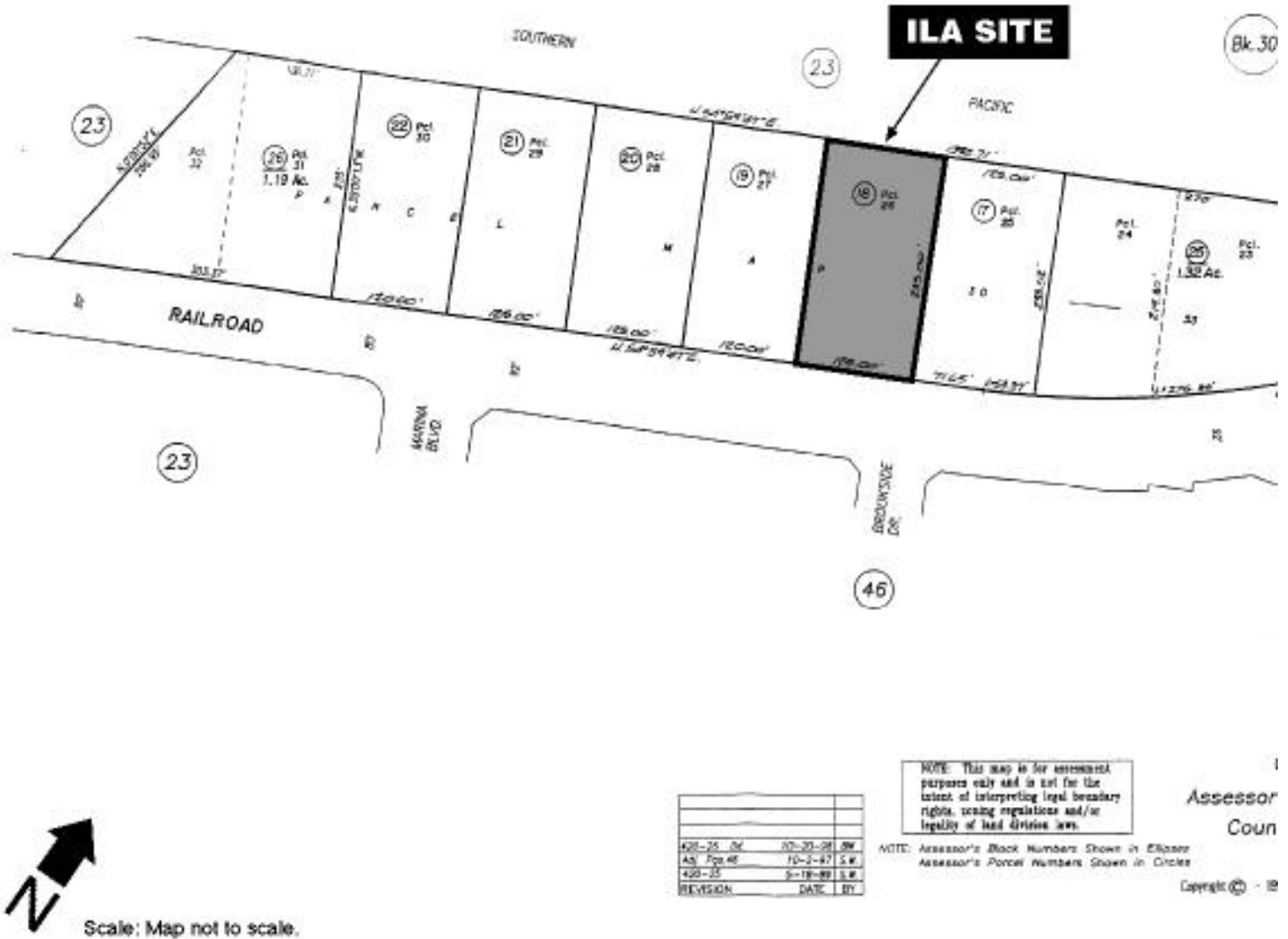


POR. LOT 37 SUISUN RANCHO
 POR. SEC. 25, T.5N., R.2W., M.D.B. & M.

Tax



REVISION	DATE	BY
420-25	02-20-98	SW
420-25	10-2-97	SW
420-25	9-19-99	SW

NOTE: This map is for informational purposes only and is not for the intent of interpreting legal boundary rights, zoning regulations and/or legality of land division laws.

NOTE: Assessor's Block Numbers Shown in Ellipses
 Assessor's Parcel Numbers Shown in Circles

Figure 3. Fairfield ILA

Source: Assessor's Map Bk. 103, pg 36, Kern County, CA