

SUBDIVIDED LAND IN POR. SEC. 5, T.14S., R.20E. M.D.B. & M.

— NOTE —
This map is for Assessment purposes only
it is not to be construed as portraying legal
ownership or divisions of land for purpose
of zoning or subdivision law.

Tax Area
3-144

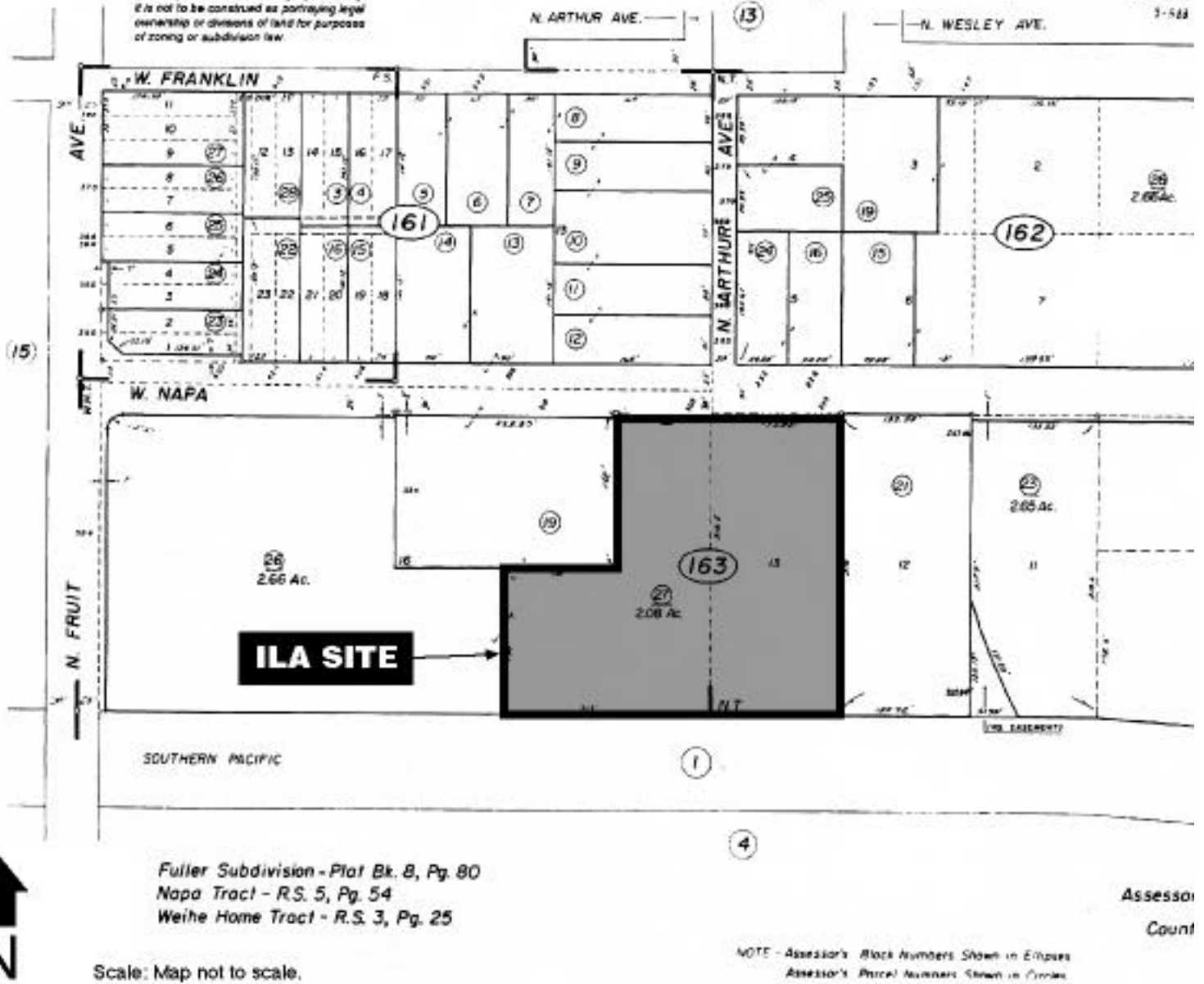


Figure 3. Fresno ILA

Source: Assessor's Map Bk. 487, pg 15, Fresno County, CA