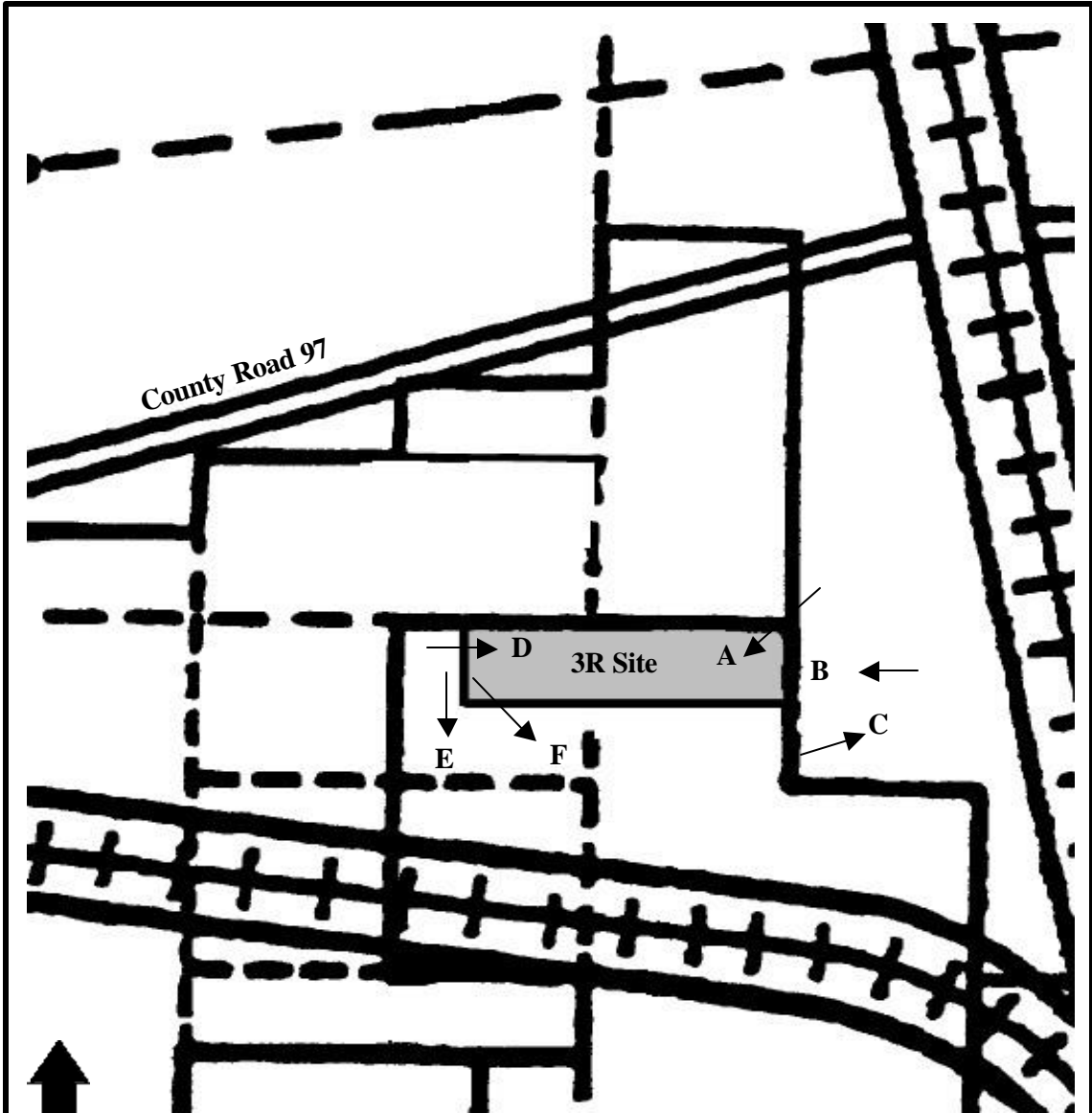


N

Map not to scale.

Source: Assessor's Map Bk. 9, Pg. 09, Modoc County, CA

Figure 5. Tionesta 3R Site Surrounding Land Use Map



N

Map not to scale.

Source: Assessor's Map Bk. 9, Pg. 09, Modoc County, CA

Figure 6. Tionesta 3R Site Photo Key Map

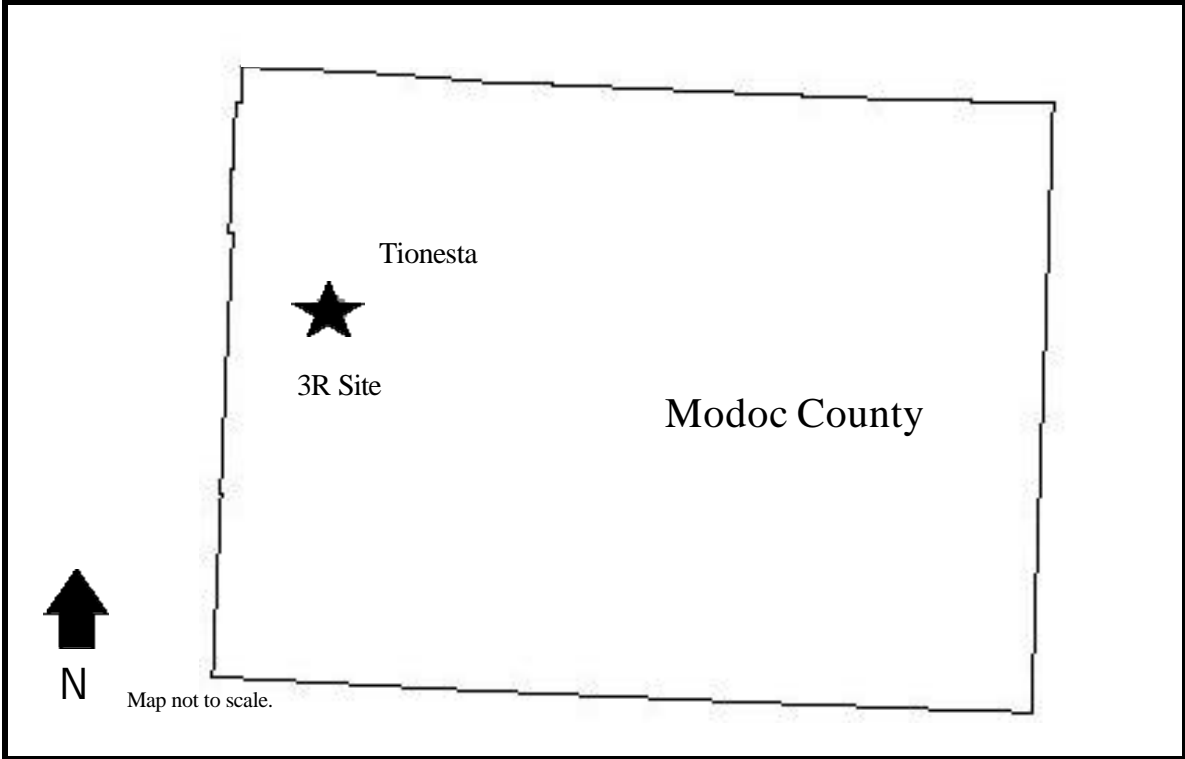


Figure 1. Tionesta 3R Regional Map.



Photo A. View of Proposed 3R Site from Northeast Corner Facing Southwest.
Note mounds of pumice processing related materials within site.



Photo B. View of Proposed 3R Site from Approximately 100 feet East of Site.
Northern and southern site property lines are just outside the right and left edges of the photograph, respectively.



Photo C. The North-South Overhead Utility Lines run Adjacent to the BNSF Railroad Tracks Approximately 300 feet East of the Proposed 3R Site. Photo taken from southeast corner of site facing northeast.



Photo D. View of Proposed 3R Site from Outside Northwest Corner of Site Facing East. Photo shows mounds of pumice processing material within the site beyond the north-south segment of access road (leading to residence).



Photo E. View of Residence from Southwest Corner of Proposed 3R Site Facing South. This is the only residence in the area and is located approximately 700 feet from the site.



Photo F. View of Area South of Proposed 3R Site from Southwest Corner Facing Southeast. The office of Glass Mountain Pumice, Inc. shows in the right of the photo, located approximately 500 feet south of the site.