

Important Farmland Maps are compiled by the Farmland Mapping and Monitoring Program (FMMP) pursuant to Section 65570 of the California Government Code. To create the maps, FMMP combines current land use information with U.S. Department of Agriculture-Natural Resources Conservation Service (NRCS) soil survey data. Soil units qualifying for Prime Farmland and Farmland of Statewide Importance are determined by the NRCS. Changes to soil profiles subsequent to publication of NRCS soil surveys are not reflected on this map. This map was developed using NRCS digital soil data (SSURGO) and may contain individual soil units as small as one acre.

Land use status is determined using aerial imagery by permission from one or more of the following sources: the High Altitude Missions Branch of NASA, EROS Data Center, SPOT Data Corporation, AirPhotoUSA, and the U.S. Department of Agriculture Farm Service Agency. Additional data on land management and land use conversion activity was made available from the U.S. Bureau of Reclamation, California Department of Fish and Game, California Department of Water Resources, California Integrated Waste Management Board, and the CALFED Bay-Delta Program. Map reviewers at the county and local level contribute valuable information with their comments and suggestions.

Cultural base information for the Important Farmland Maps was derived from the U.S. Geological Survey, with updates from Geographic Data Technologies, Inc., and information derived from digital imagery.

This map should be used within the limits of its purpose - as a current inventory of agricultural land resources. This map does not necessarily reflect general plan or zoning designations, city limit lines, changing economic or market conditions, or other factors which may be taken into consideration when land use policies are determined. This map is not designed for parcel-specific planning purposes due to its scale and the ten-acre minimum land use mapping unit. Classification of important farmland and urban areas on this map is based on best available data. The information has been delineated as accurately as possible at 1:24,000-scale, but no claim to meet 1:24,000 National Map Accuracy Standards is made due to variations in the quality of source data.

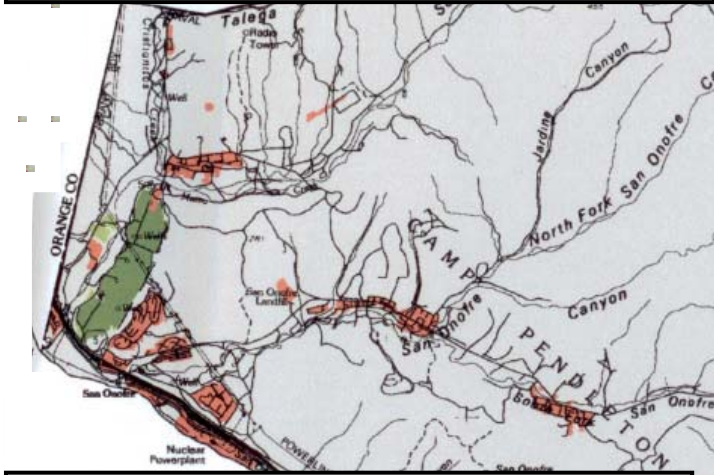
The Department of Conservation makes no warranties as to the suitability of this product for any particular purpose.

**Figure 4.4.2-2. Riverside County Important Farmland (2004) (1 of 4)**  
Source: California Department of Conservation

**PRIME FARMLAND - 8,525 acres**  
 PRIME FARMLAND HAS THE BEST COMBINATION OF PHYSICAL AND CHEMICAL FEATURES ABLE TO SUSTAIN LONG-TERM AGRICULTURAL PRODUCTION. THIS LAND HAS THE SOIL QUALITY, GROWING SEASON, AND MOISTURE SUPPLY NEEDED TO PRODUCE SUSTAINED HIGH YIELDS. LAND MUST HAVE BEEN USED FOR IRRIGATED AGRICULTURAL PRODUCTION AT SOME TIME DURING THE FOUR YEARS PRIOR TO THE MAPPING DATE.

**FARMLAND OF STATEWIDE IMPORTANCE - 12,181 acres**  
 FARMLAND OF STATEWIDE IMPORTANCE IS SIMILAR TO PRIME FARMLAND BUT WITH MINOR SHORTCOMINGS, SUCH AS GREATER SLOPES OR LESS ABILITY TO STORE SOIL MOISTURE. LAND MUST HAVE BEEN USED FOR IRRIGATED AGRICULTURAL PRODUCTION AT SOME TIME DURING THE FOUR YEARS PRIOR TO THE MAPPING DATE.

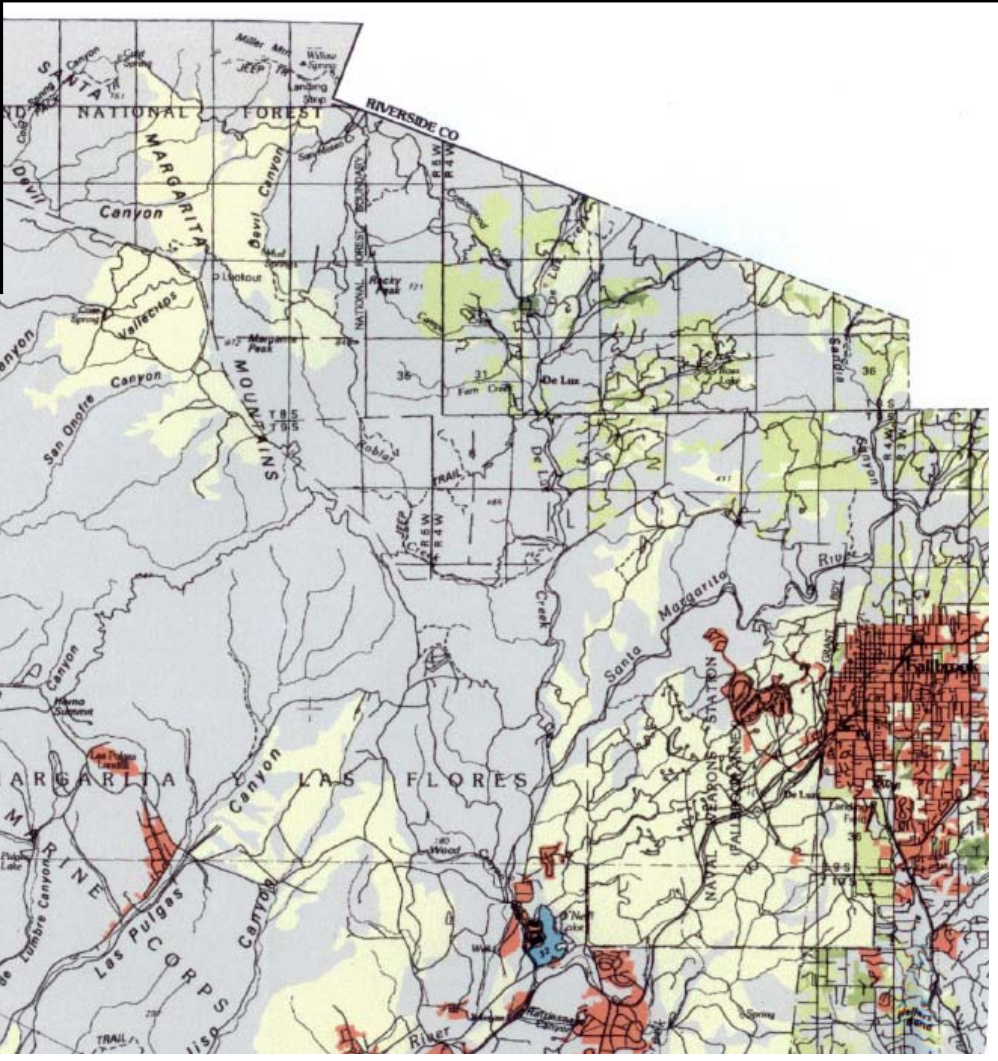
**UNIQUE FARMLAND - 55,566 acres**  
 UNIQUE FARMLAND CONSISTS OF LESSER QUALITY SOILS USED FOR THE PRODUCTION OF THE STATE'S LEADING AGRICULTURAL CROPS. THIS LAND IS USUALLY IRRIGATED, BUT MAY INCLUDE NONIRRIGATED ORCHARDS OR VINEYARDS AS FOUND IN SOME CLIMATIC ZONES IN CALIFORNIA. LAND MUST HAVE BEEN CROPPED AT SOME TIME DURING THE FOUR YEARS PRIOR TO THE MAPPING DATE.



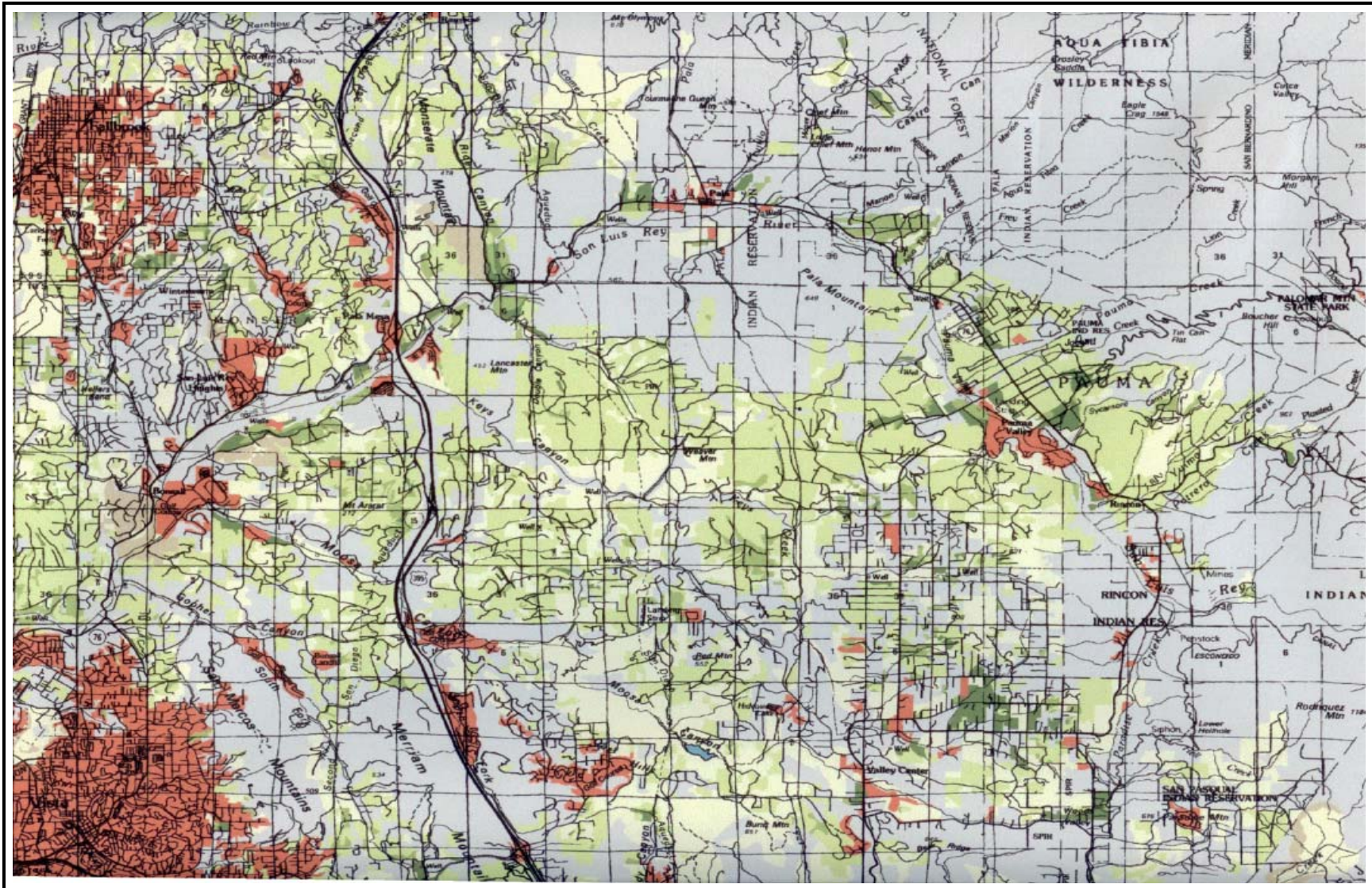
**FARMLAND OF LOCAL IMPORTANCE - 134,491 acres**  
 LAND THAT MEETS ALL THE CHARACTERISTICS OF PRIME AND STATEWIDE, WITH THE EXCEPTION OF IRRIGATION.  
 FARMLANDS NOT COVERED BY THE ABOVE CATEGORIES BUT ARE OF SIGNIFICANT ECONOMIC IMPORTANCE TO THE COUNTY. THEY HAVE A HISTORY OF GOOD PRODUCTION FOR LOCALLY ADAPTED CROPS. THE SOILS ARE GROUPED IN TYPES THAT ARE SUITED FOR TRUCK CROPS (SUCH AS TOMATOES, STRAWBERRIES, CUCUMBERS, POTATOES, CELERY, SQUASH, ROMAINE LETTUCE, AND CAULIFLOWER) AND SOILS SUITED FOR ORCHARD CROPS (AVOCADOS AND CITRUS).

**GRAZING LAND - 107,327 acres**  
 GRAZING LAND IS LAND ON WHICH THE EXISTING VEGETATION IS SUITED TO THE GRAZING OF LIVESTOCK. THE MINIMUM MAPPING UNIT IS 40 ACRES.

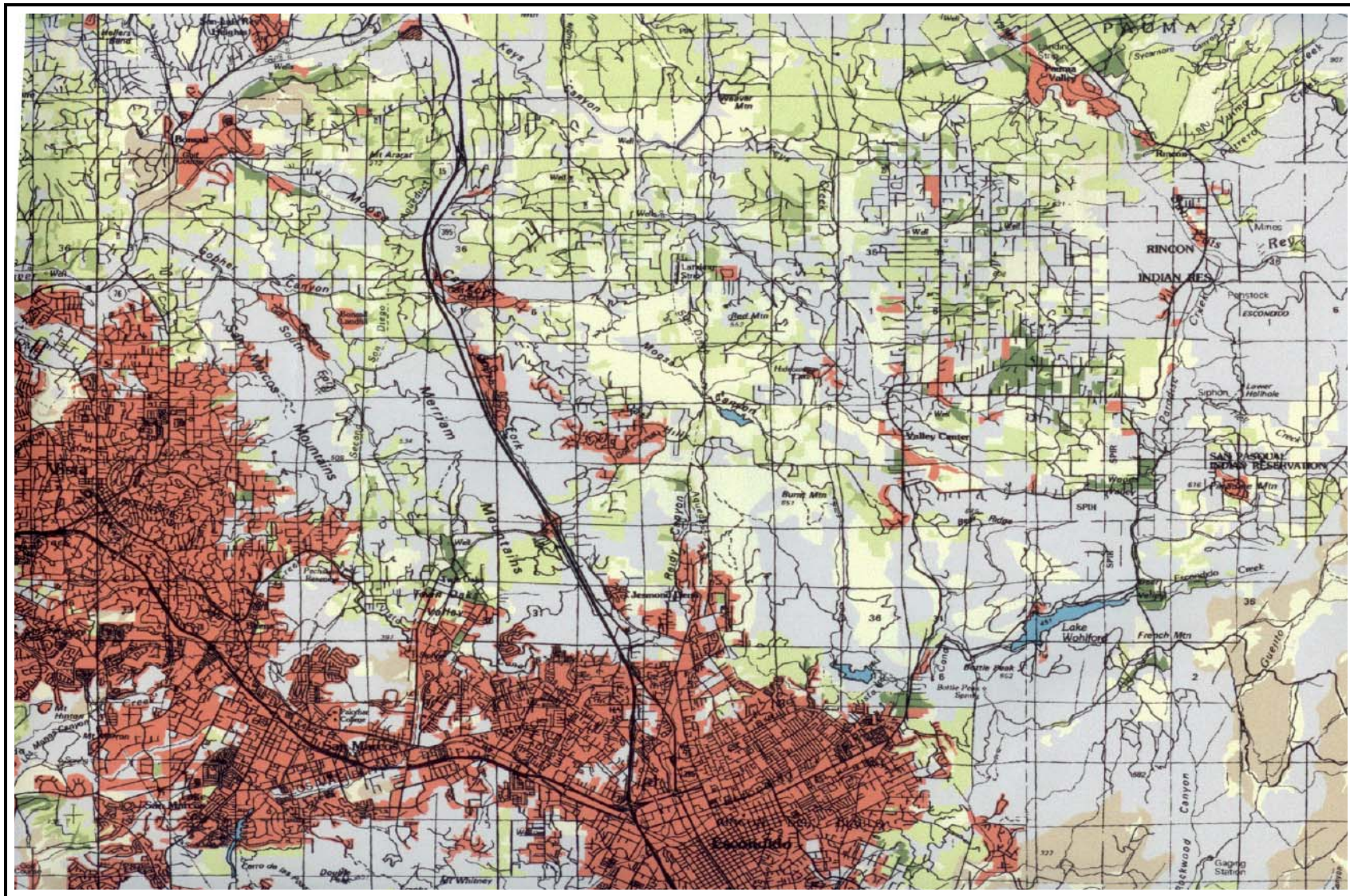
**URBAN AND BUILT-UP LAND - 338,845 acres**  
 URBAN AND BUILT-UP LAND IS OCCUPIED BY STRUCTURES WITH A BUILDING DENSITY OF AT LEAST 1 UNIT TO 1.5 ACRES, OR APPROXIMATELY 6 STRUCTURES TO A 10-ACRE PARCEL. COMMON EXAMPLES INCLUDE RESIDENTIAL, INDUSTRIAL, COMMERCIAL, INSTITUTIONAL FACILITIES, CEMETERIES, AIRPORTS, GOLF COURSES, SANITARY LANDFILLS, SEWAGE TREATMENT, AND WATER CONTROL STRUCTURES.



**Figure 4.4.2-2. San Diego County Important Farmland (2004) (2 of 4)**  
 Source: California Department of Conservation



**Figure 4.4.2-2. San Diego County Important Farmland (2004) (3 of 4)**  
Source: California Department of Conservation



**Figure 4.4.2-2. San Diego County Important Farmland (2004) (4 of 4)**

Source: California Department of Conservation