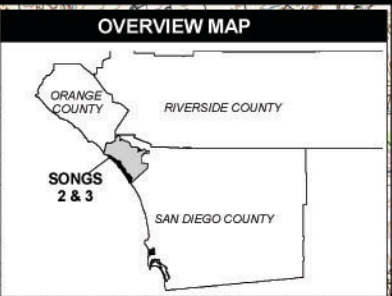
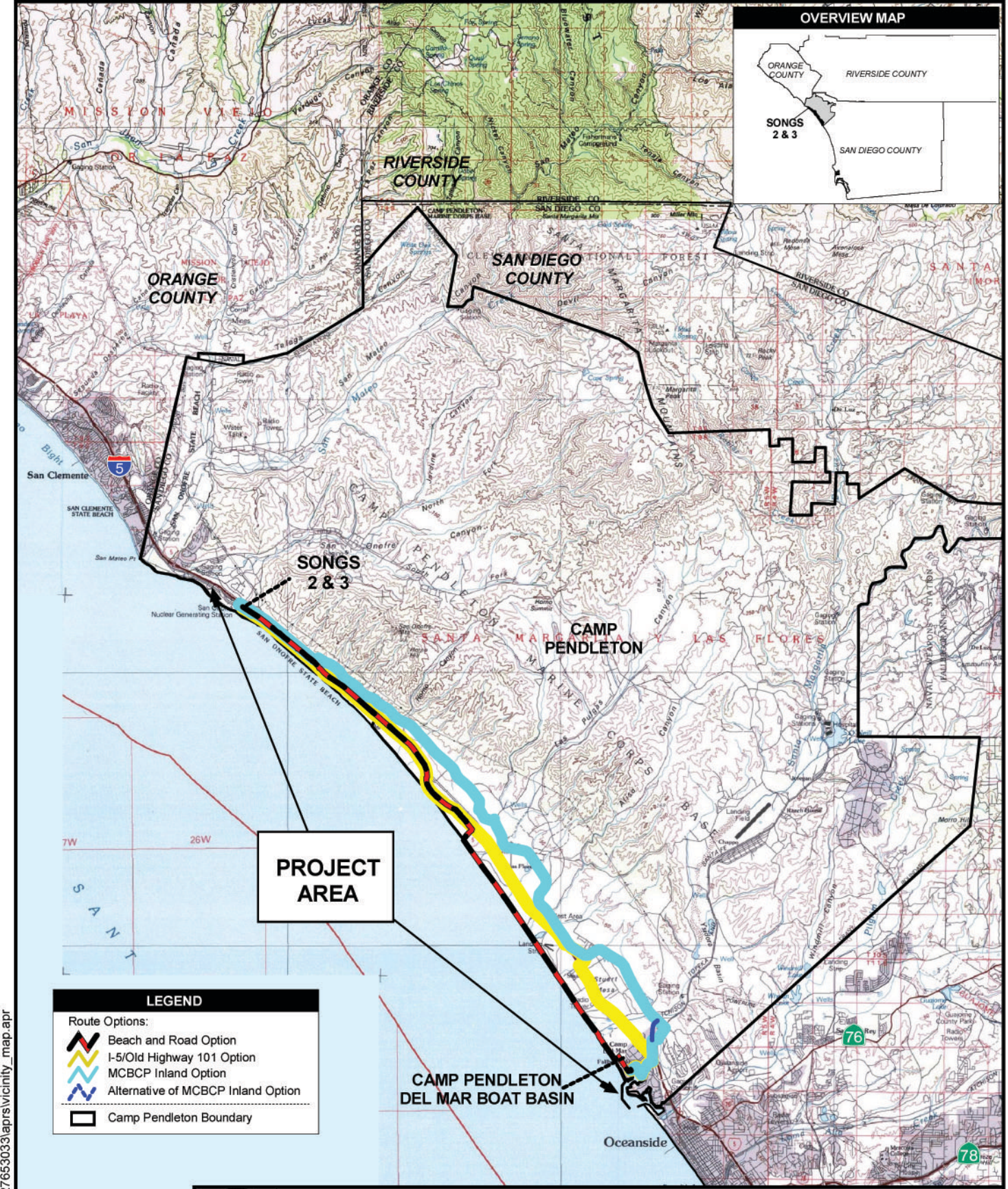


1.1 OVERVIEW OF THE PROPOSED PROJECT

San Onofre Nuclear Generating Station Units 2 and 3 (SONGS 2 & 3) are located near San Clemente, California, on an 84-acre site (Figures 1-1 and 1-2). Southern California Edison Company (SCE) is the operating agent for SONGS 2 & 3. SONGS Unit 1 (SONGS 1) is no longer in operation and is currently in the process of being decommissioned. SONGS 2 & 3 are two pressurized water reactor (PWR) nuclear power plants rated at 1,070 megawatts electric (MW) and 1,080 MW, respectively. PWRs use large components called steam generators to transfer energy from the nuclear fuel to the steam turbine, where this thermal energy is converted to electrical energy. The SONGS 2 & 3 original steam generators must be replaced with replacement steam generators (RSGs) because the original steam generators may not support continued operation after the Fuel Cycle 16 refueling and maintenance outage (RFO). The steam generators are approximately 65.5 feet long and weigh approximately 620 tons. The upper dome section is approximately 22 feet in diameter and the lower section is approximately 14 feet in diameter. SONGS 2 & 3 will obtain the non-radioactive RSGs from an international vendor. They will be transported to SONGS 2 & 3 following an appropriate route that meets transportation requirements to protect public health and the environment. Once at SONGS 2 & 3, the RSGs will be staged temporarily until ready for installation during each unit's scheduled Fuel Cycle 16 RFO. The Fuel Cycle 16 RFO for SONGS 2 may begin as early as spring 2009. All major activities to remove the original steam generators and install the RSGs will occur during the Fuel Cycle 16 RFO. Refer to Section 3 for details on transportation and staging activities.

In the process of removing the original steam generators from the containment building and staging them for eventual transportation to the licensed low level radioactive waste (LLRW) disposal facility, the original steam generators will be treated with a protective coating to capsulate potential radioactive contamination and prevent the spread of contamination to workers, the public, or the environment. Cover plates or plugs will be installed on all openings of the original steam generators to seal their internal portion. During replacement operations, the original steam generators will temporarily be staged within the SONGS 2 & 3 Owner-Controlled Area (OCA), west of I-5, as shown in Figure 1-2. After completion of replacement operations, the original steam generators will be shipped to a permanent low-level radioactive waste (LLRW) disposal facility. Refer to Section 3 for details on staging activities.



PROJECT AREA

LEGEND

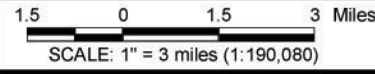
Route Options:

- Beach and Road Option
- I-5/Old Highway 101 Option
- MCBCP Inland Option
- Alternative of MCBCP Inland Option
- Camp Pendleton Boundary

CAMP PENDLETON DEL MAR BOAT BASIN



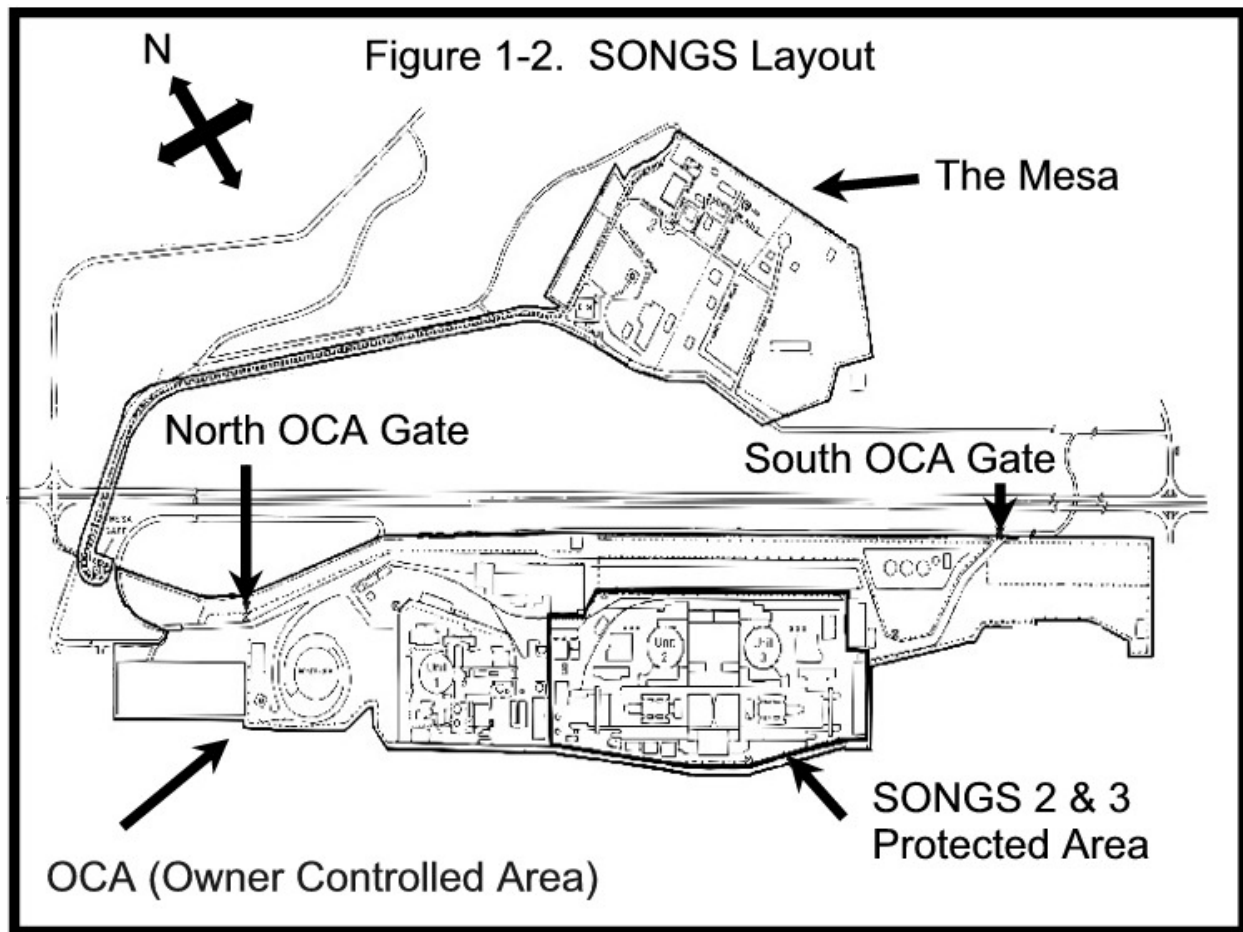
SOURCES: SANDAG (roads)
National Geographic (USGS quad base).



**VICINITY MAP
SONGS 2 & 3**

CHECKED BY: BF	DATE: 11-12-03	FIG. NO:
PM: BM	PROJ. NO: 27653033.00031	1-1

G:\gis\projects\157727653033\aprs\vicinity_map.apr



1.2 DOCUMENT ORGANIZATION

Section 2 describes the purpose and need for the Project. Section 3 describes the Project, options within the Project, and alternatives to the Project. Section 4 describes the environmental setting of the Project, options within the Project, and alternatives to the Project. Section 5 describes expected impacts and mitigation. Section 6 provides a summary of significant environmental impacts and comparison among alternatives. Cumulative impacts, growth-inducing effects, and indirect effects are described in Sections 7 through 9, respectively. References are listed in Section 10, and a list of preparers is provided in Section 11. Appendix A shows the potential transportation route options. Biological Resources along the potential transportation route options are depicted in Appendix B. The California Environmental Quality Act (CEQA) Initial Study checklist is provided in Appendix C. Appendix D documents Agency Correspondence from the California Coastal Commission, the Native American Heritage Commission, the California Department of Transportation (Caltrans), California State Parks, the

United States Fish and Wildlife Service (USFWS), and the Marine Corps Base Camp Pendleton (MCBCP).