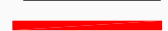





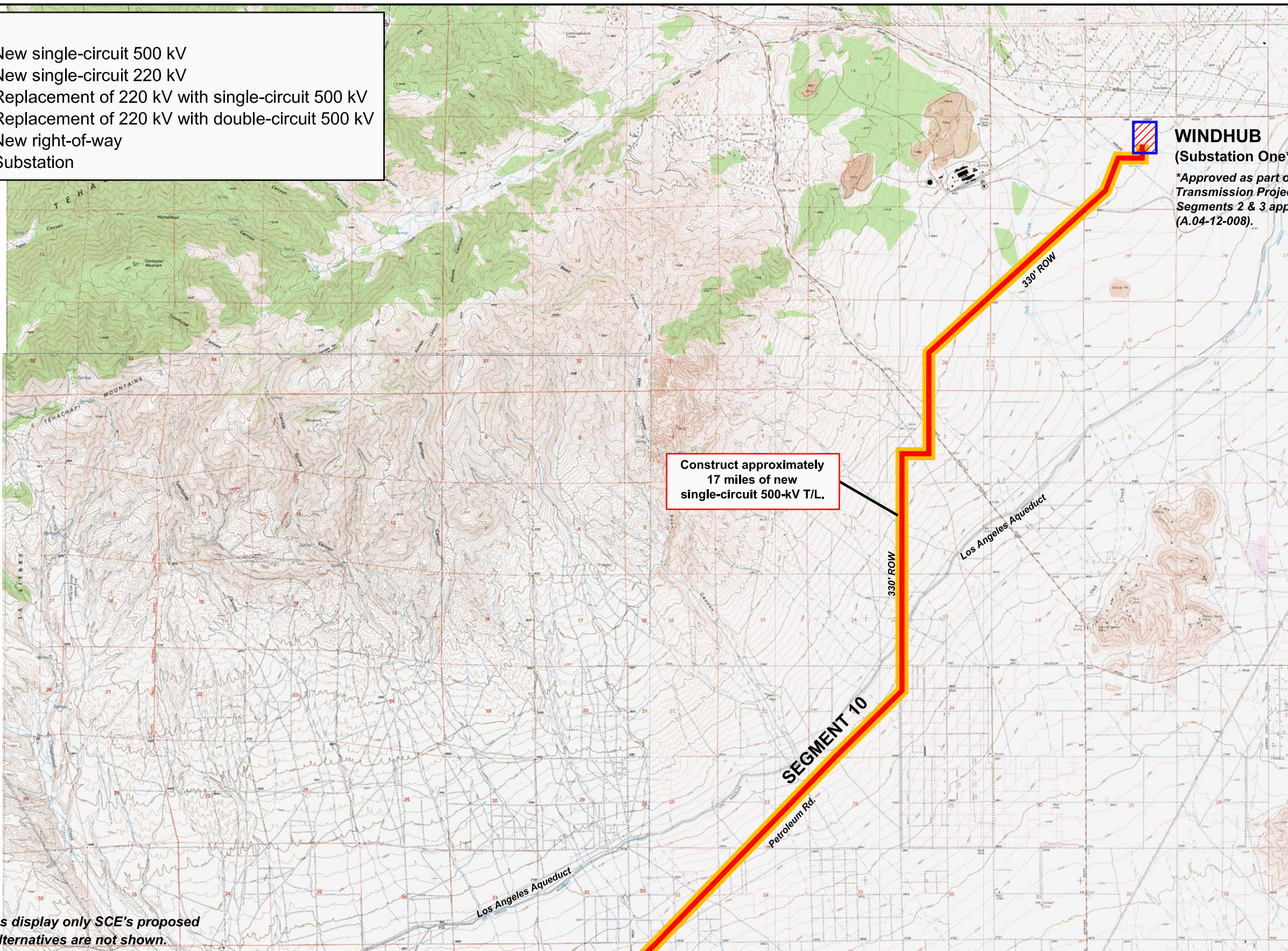


**Legend**

-  New single-circuit 500 kV
-  New single-circuit 220 kV
-  Replacement of 220 kV with single-circuit 500 kV
-  Replacement of 220 kV with double-circuit 500 kV
-  New right-of-way
-  Substation



**WINDHUB**  
(Substation One\*)

\*Approved as part of Antelope  
Transmission Project  
Segments 2 & 3 application  
(A.04-12-008).

Construct approximately  
17 miles of new  
single-circuit 500-kV T/L.

Note: These maps display only SCE's proposed Project. Alternatives are not shown.



Scale: 1" = 6,000'  
Date: December 5, 2008  
File: 1243\_Routemap5.dwg

