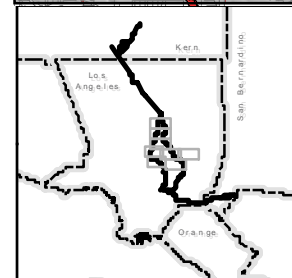
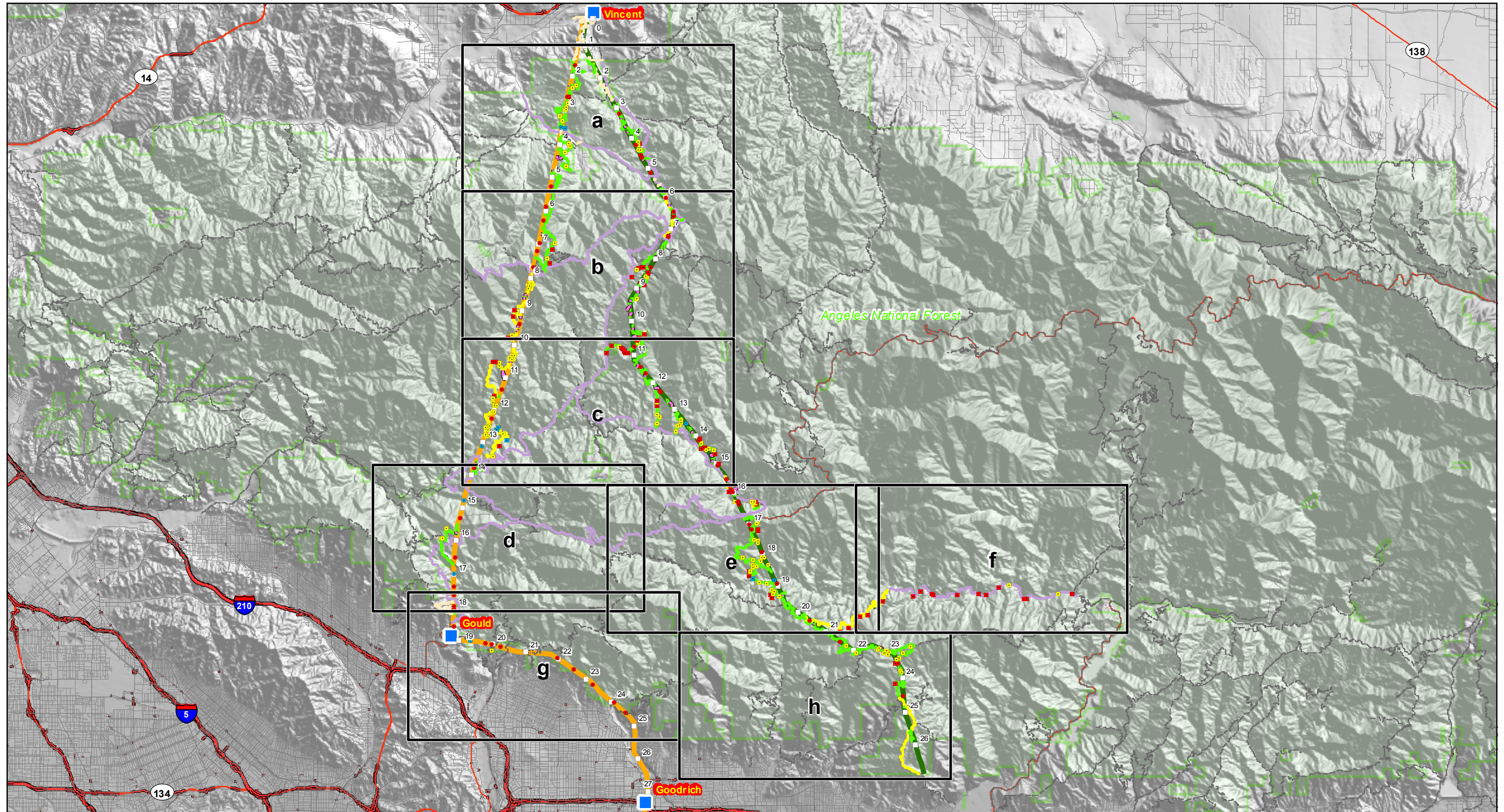


Appendix L.
RCA Crossings Figures



Aspen
Environmental Group



Road Crossings - GPS

- Ephemeral
- Intermittent
- Perennial

Line Crossings - Aerial Imagery

- Ephemeral
- Intermittent
- Perennial

Roads on ANF

- Paved Road - to be used
- Maintenance Road
- Reconstruction Road
- New Road
- Private Road
- Forest Service Road - not part of project

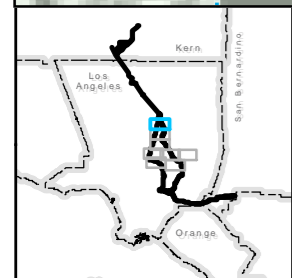
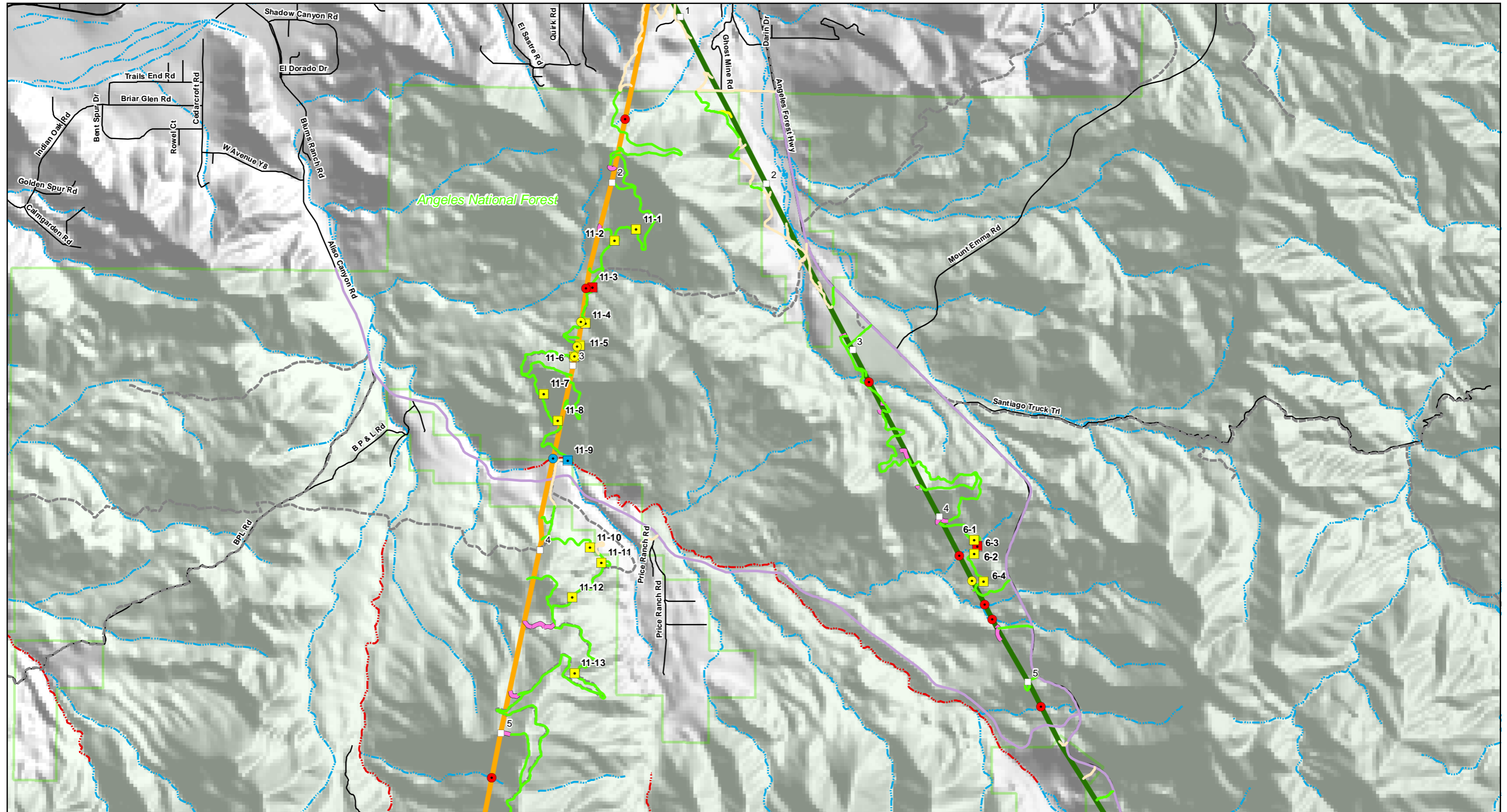
Proposed Routes

- Segment 6
- Segment 11
- Substation
- Segment Milepost Marker

Appendix L-1

Index

**RCA Crossing Points
on Angeles National Forest**



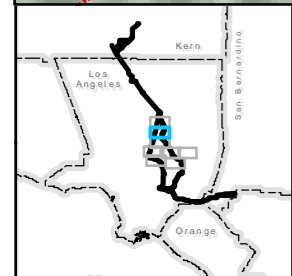
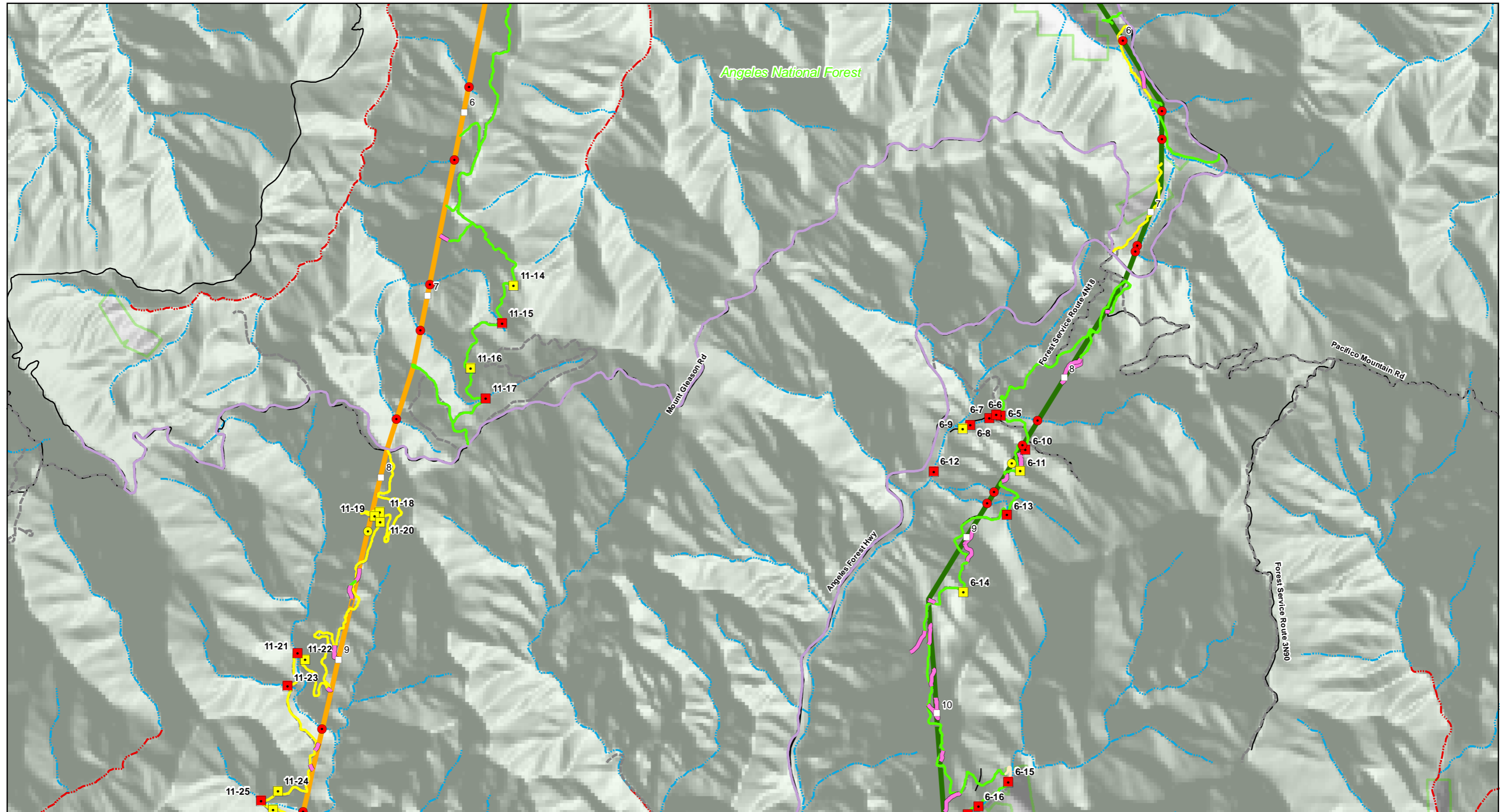
Aspen Environmental Group

1" = 1/2 mile
1 : 32,000

- | | | | |
|--|--|---|--|
| <p>Road Crossings - GPS</p> <ul style="list-style-type: none"> ■ Ephemeral ■ Intermittent ■ Perennial <p>Line Crossings - Aerial Imagery</p> <ul style="list-style-type: none"> ● Ephemeral ● Intermittent ● Perennial | <p>NHD Streams</p> <ul style="list-style-type: none"> — Stream/River: Hydrographic Category = Intermittent — Stream/River: Hydrographic Category = Perennial | <p>Roads on ANF</p> <ul style="list-style-type: none"> — Paved Road - to be used — Maintenance Road — Reconstruction Road — New Road — Private Road — Forest Service Road - not part of project | <p>Proposed Routes</p> <ul style="list-style-type: none"> — Segment 6 — Segment 11 ■ Substation Segment Milepost Marker |
|--|--|---|--|

Appendix L-2

**RCA Crossing Points
on Angeles National Forest**



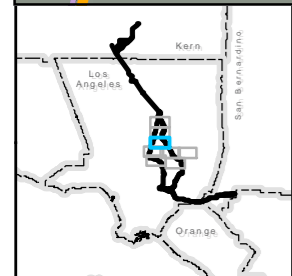
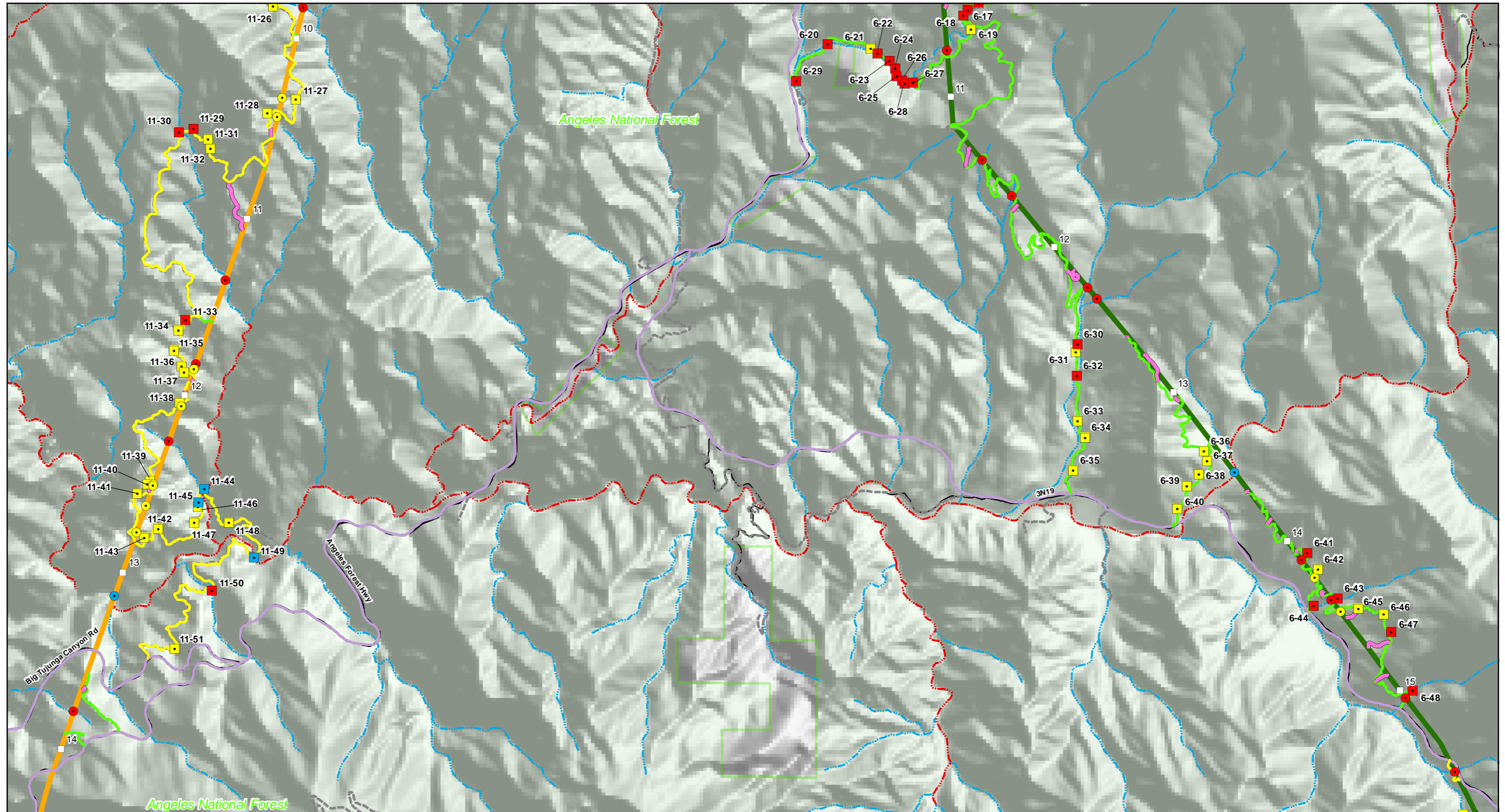
Aspen Environmental Group

1" = 1/2 mile
1 : 32,000

<p>Road Crossings - GPS</p> <ul style="list-style-type: none"> ■ Ephemeral ■ Intermittent ■ Perennial <p>Line Crossings - Aerial Imagery</p> <ul style="list-style-type: none"> ● Ephemeral ● Intermittent ● Perennial 	<p>NHD Streams</p> <ul style="list-style-type: none"> — Stream/River: Hydrographic Category = Intermittent — Stream/River: Hydrographic Category = Perennial 	<p>Roads on ANF</p> <ul style="list-style-type: none"> — Paved Road - to be used — Maintenance Road — Reconstruction Road — New Road — Private Road — Forest Service Road - not part of project 	<p>Proposed Routes</p> <ul style="list-style-type: none"> — Segment 6 — Segment 11 ■ Substation Segment Milepost Marker
--	--	---	--

Appendix L-3

RCA Crossing Points on Angeles National Forest



Aspen Environmental Group

1" = 1/2 mile
1 : 32,000

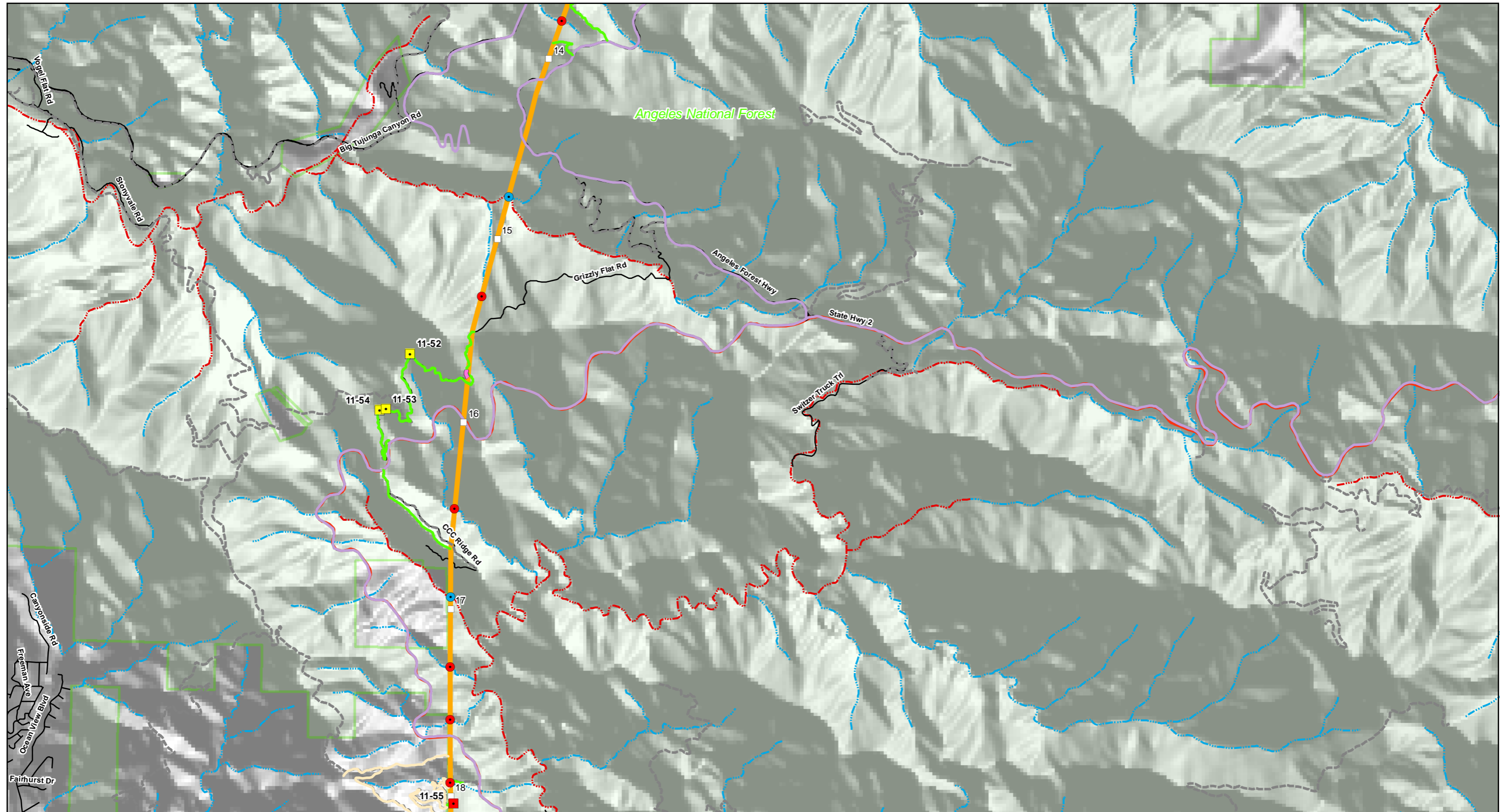
- | | | |
|--|--|---|
| <p>Road Crossings - GPS</p> <ul style="list-style-type: none"> ■ Ephemeral ■ Intermittent ■ Perennial <p>Line Crossings - Aerial Imagery</p> <ul style="list-style-type: none"> ● Ephemeral ● Intermittent ● Perennial | <p>NHD Streams</p> <ul style="list-style-type: none"> --- Stream/River: Hydrographic Category = Intermittent --- Stream/River: Hydrographic Category = Perennial | <p>Roads on ANF</p> <ul style="list-style-type: none"> --- Paved Road - to be used --- Maintenance Road --- Reconstruction Road --- New Road --- Private Road --- Forest Service Road - not part of project |
|--|--|---|

Proposed Routes

- Segment 6
- Segment 11
- Substation
- Segment Milepost Marker

Appendix L-4

**RCA Crossing Points
on Angeles National Forest**



Aspen Environmental Group

1" = 1/2 mile
1 : 32,000

0.5 0.25 0 0.5 1 Miles

Road Crossings - GPS

- Ephemeral
- Intermittent
- Perennial

Line Crossings - Aerial Imagery

- Ephemeral
- Intermittent
- Perennial

NHD Streams

- Stream/River: Hydrographic Category = Intermittent
- Stream/River: Hydrographic Category = Perennial

Roads on ANF

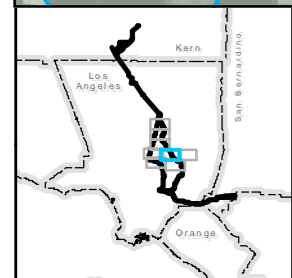
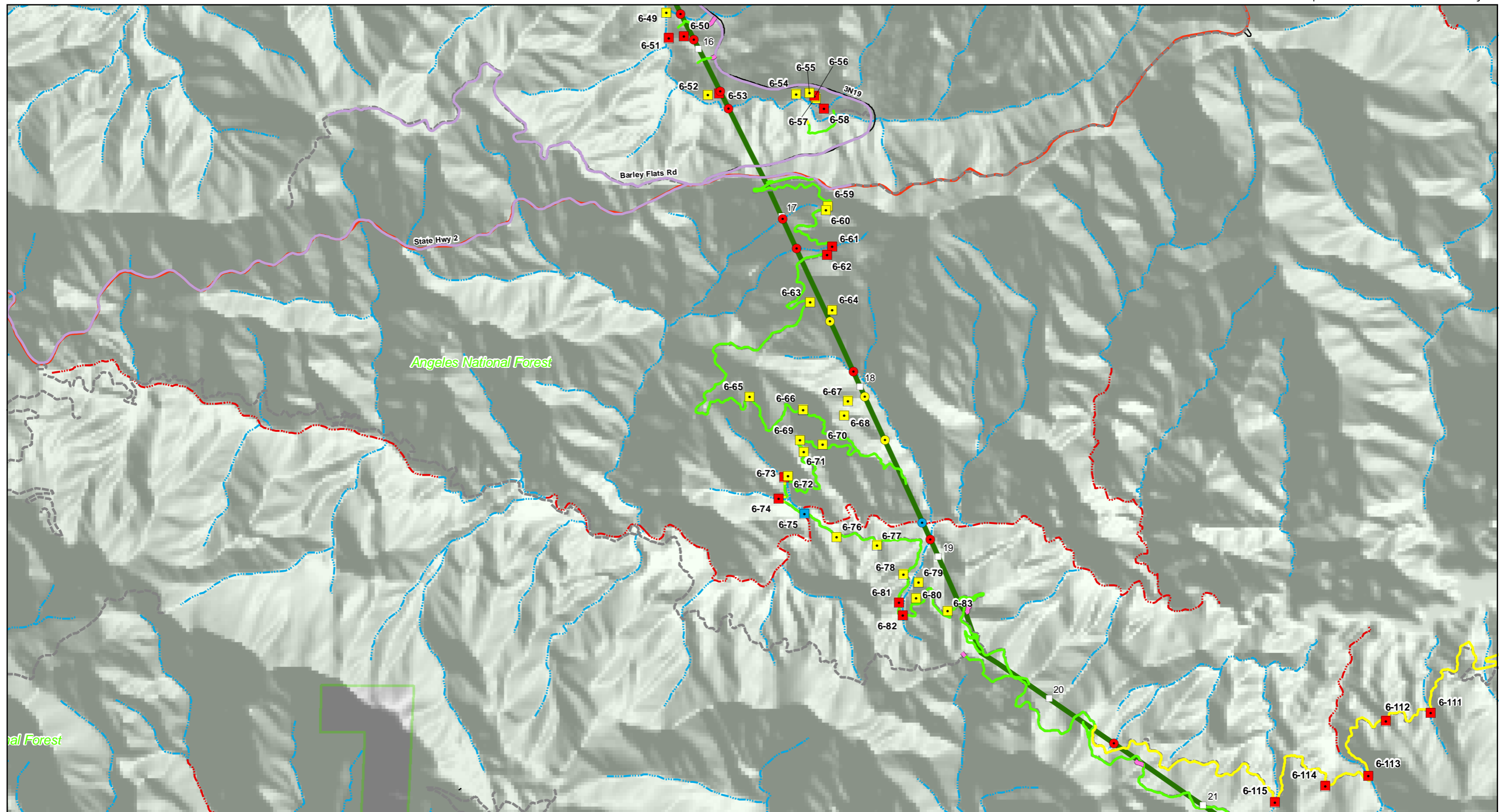
- Paved Road - to be used
- Maintenance Road
- Reconstruction Road
- New Road
- Private Road
- Forest Service Road - not part of project

Proposed Routes

- Segment 6
- Segment 11
- Substation
- Segment Milepost Marker

Appendix L-5

RCA Crossing Points on Angeles National Forest



Aspen
Environmental Group



1" = 1/2 mile
1 : 32,000



Road Crossings - GPS

- Ephemeral
- Intermittent
- Perennial

Line Crossings - Aerial Imagery

- Ephemeral
- Intermittent
- Perennial

NHD Streams

- Stream/River: Hydrographic Category = Intermittent
- Stream/River: Hydrographic Category = Perennial

Roads on ANF

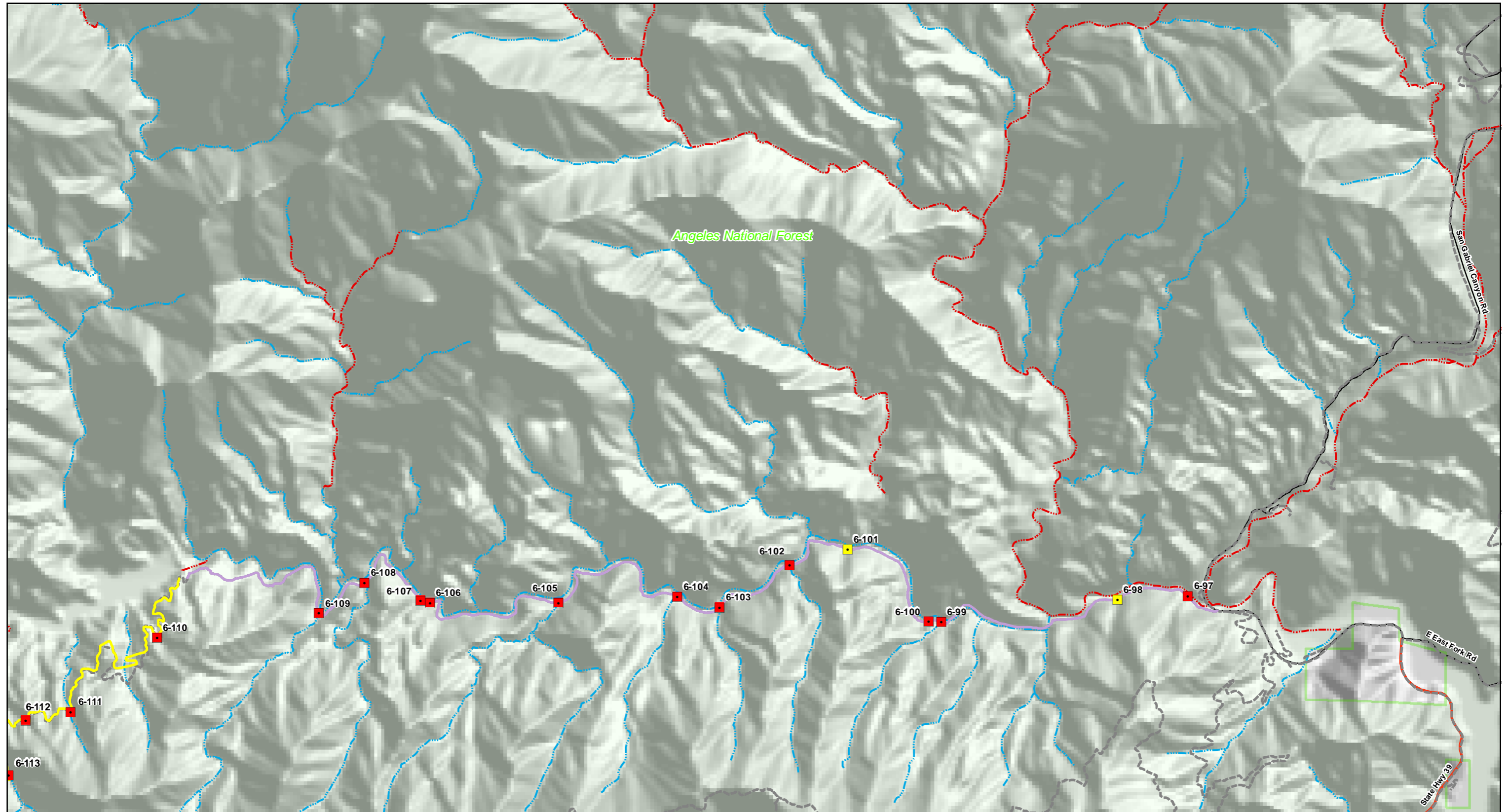
- Paved Road - to be used
- Maintenance Road
- Reconstruction Road
- New Road
- Private Road
- Forest Service Road - not part of project

Proposed Routes

- Segment 6
- Segment 11
- Substation
- Segment Milepost Marker

Appendix L-6

**RCA Crossing Points
on Angeles National Forest**



Aspen
Environmental Group



1" = 1/2 mile
1 : 32,000



Road Crossings - GPS

- Ephemeral
- Intermittent
- Perennial

Line Crossings - Aerial Imagery

- Ephemeral
- Intermittent
- Perennial

NHD Streams

- Stream/River: Hydrographic Category = Intermittent
- Stream/River: Hydrographic Category = Perennial

Roads on ANF

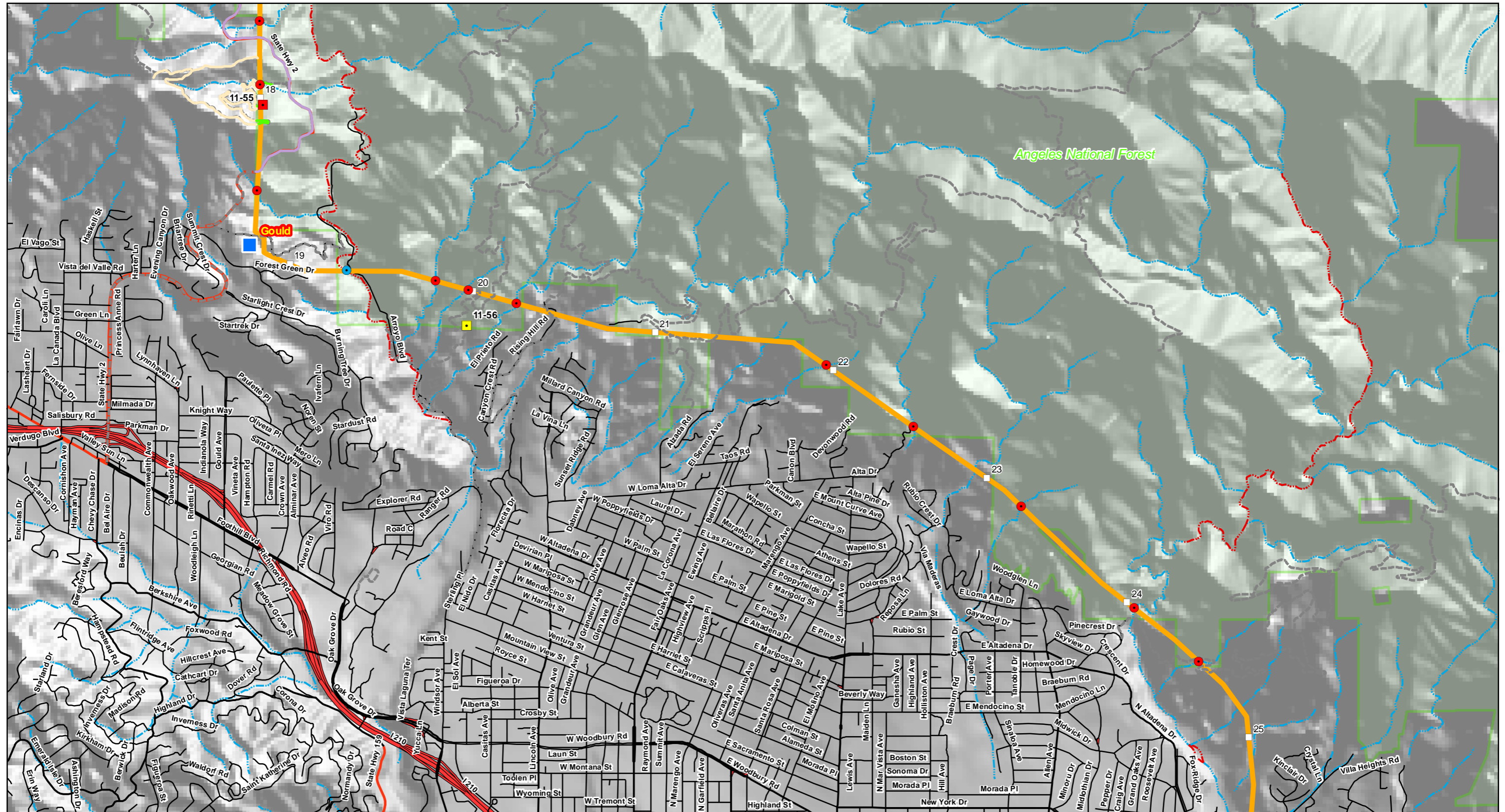
- Paved Road - to be used
- Maintenance Road
- Reconstruction Road
- New Road
- Private Road
- Forest Service Road - not part of project

Proposed Routes

- Segment 6
- Segment 11
- Substation
- Segment Milepost Marker

Appendix L-7

**RCA Crossing Points
on Angeles National Forest**



1" = 1/2 mile
1 : 32,000



Road Crossings - GPS

- Ephemeral
- Intermittent
- Perennial

Line Crossings - Aerial Imagery

- Ephemeral
- Intermittent
- Perennial

NHD Streams

- Stream/River: Hydrographic Category = Intermittent
- Stream/River: Hydrographic Category = Perennial

Roads on ANF

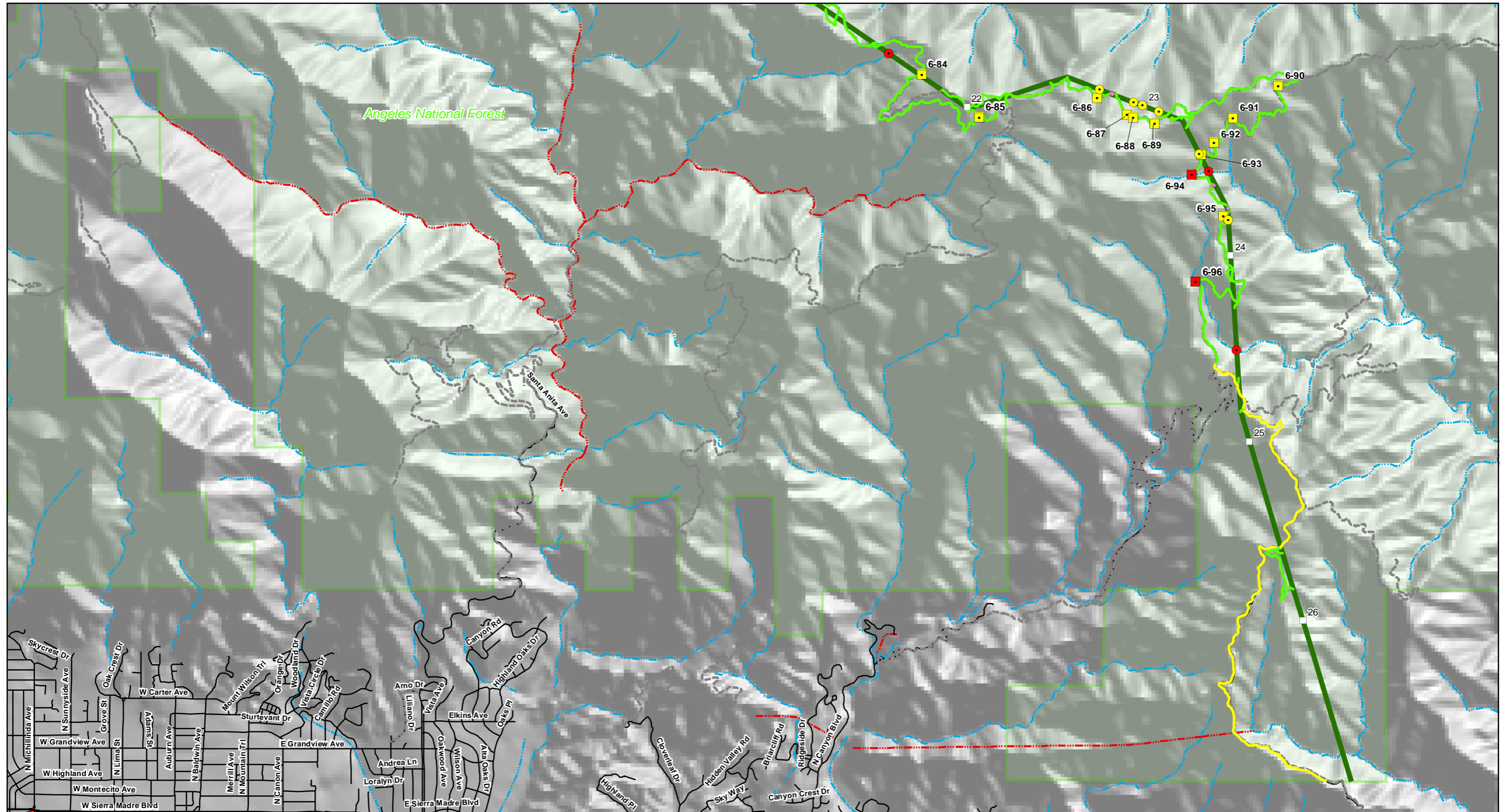
- Paved Road - to be used
- Maintenance Road
- Reconstruction Road
- New Road
- Private Road
- Forest Service Road - not part of project

Proposed Routes

- Segment 6
- Segment 11
- Substation
- Segment Milepost Marker

Appendix L-8

**RCA Crossing Points
on Angeles National Forest**



Aspen
Environmental Group



1" = 1/2 mile
1 : 32,000



Road Crossings - GPS

- Ephemeral
- Intermittent
- Perennial

Line Crossings - Aerial Imagery

- Ephemeral
- Intermittent
- Perennial

NHD Streams

- Stream/River: Hydrographic Category = Intermittent
- Stream/River: Hydrographic Category = Perennial

Roads on ANF

- Paved Road - to be used
- Maintenance Road
- Reconstruction Road
- New Road
- Private Road
- Forest Service Road - not part of project

Proposed Routes

- Segment 6
- Segment 11
- Substation
- Segment Milepost Marker

Appendix L-9

**RCA Crossing Points
on Angeles National Forest**