

Dear Ladies and Gentlemen:

Re: Tax Parcels: 5291400100, 611,0300100,6111100100, and 6110700200,6110300200

I am forwarding to you a map that has been worked on by ourselves, several neighbors and various individuals that you know, Willett, Taylor etc.

I would want to be sure that you have these alternate (minor deviation for that proposed) within your commnets.

As you will note from the attached final discussion map from 7-3-07, we worked out minor revisions within this segment of the BCD route that provide

minimal impact to the private properties that initially were impacted. Alternately, the impacts were to state and BLM properties that are already highly

impacted. This will reduce the conflict with private property owners, reduce the cost of the Sunrise Powerlink, and impact properties that are already impacted and owned by government agencies.

We support this realignment, and we do NOT support the BCD alignment without these recommendations adhered to.

Please be sure that the surveyors, engineers, draftmen etc are aware of the deviation when they do their field work,

Many thanks for your cooperation.

Sincerely,
John Gibson , Project Mgr

From: Murphy, Lisa [mailto:LMurphy2@semprautilities.com]
Sent: Wednesday, March 05, 2008 3:51 PM
To: John Gibson
Cc: Murphy, Lisa
Subject: Sunrise Powerlink- Fadem, Charity, B&D and McAlister

Mr. Gibson,

I received the attached map from Chip Willett and it shows a modified BCD Alternative that avoids the properties you manage. The CPUC accepted that re-route as an alternative and included it in the draft environmental document. However, the "old" BCD Alternative is still in play. In other words the CPUC has not eliminated the original, but are considering the benefits of the modified BCD alternative. Therefore, SDG&E's consultants will need to access the property in order to provide the appropriate information to the CPUC.

After looking at the map I understand what you are saying about it being a better option. I cannot speak for the CPUC or BLM and they are the decision makers for this project. I strongly recommend that you make contact with them and discuss the status of this alternative. They are the people that will be making the ultimate decision and the information that we will be providing regarding environmental concerns will help them to arrive at that decision.

If you would like to provide comments to the CPUC and BLM the address, email address and phone number are listed below.

CPUC and BLM
c/o Aspen Environmental Group
235 Montgomery St., Suite 935
San Francisco, CA 94104

866-711-3106

sunrise@aspeneq.com

Lisa Murphy

Right-of-Way Agent

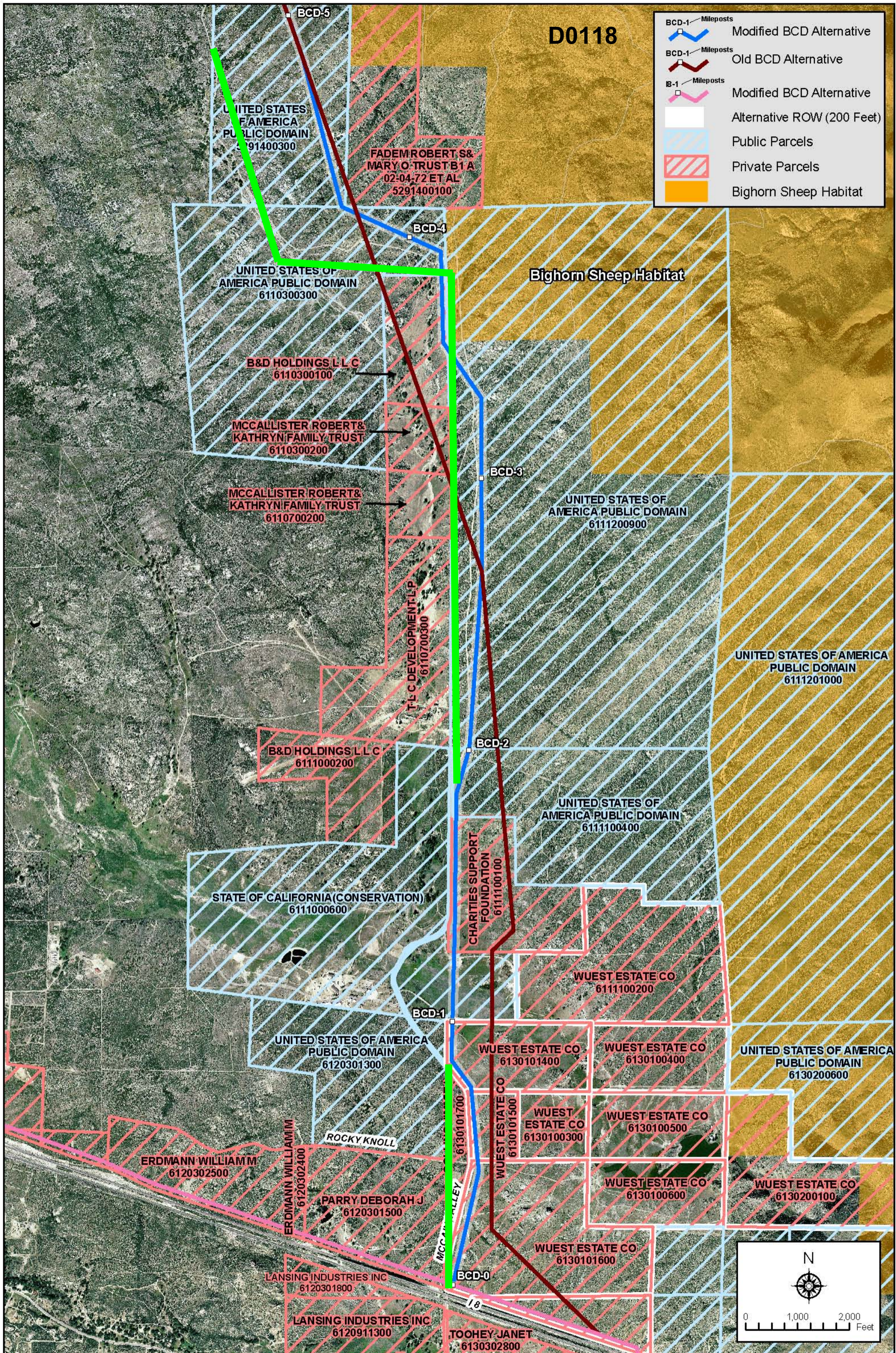
8335 Century Park Ct. CP11D

San Diego, CA 92123

858-637-7971 desk

619-843-5733 mobile

858-654-0286 fax



BCD Alternative - Modification