

- | | | |
|--|----------------------------------|---------------------------|
| Interstate 8 Alternative: South Buckman Springs Option | BCD Alternative | Cleveland National Forest |
| Interstate 8 Alternative, Overhead Portion | BCD Alternative: South Option | Wilderness Area |
| Interstate 8 Alternative: West Buckman Springs Option | Existing 69 kV Transmission Line | Recreation Areas |
| Interstate 8 Alternative: Buckman Springs Underground Option | Major Road | Viewshed Analysis |
| Modified Route D Alternative | Milepost | Not Visible |
| | Substation | Visible |
| | Bureau of Land Management Land | Sensitive Viewing Area |

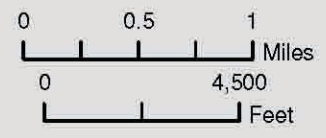
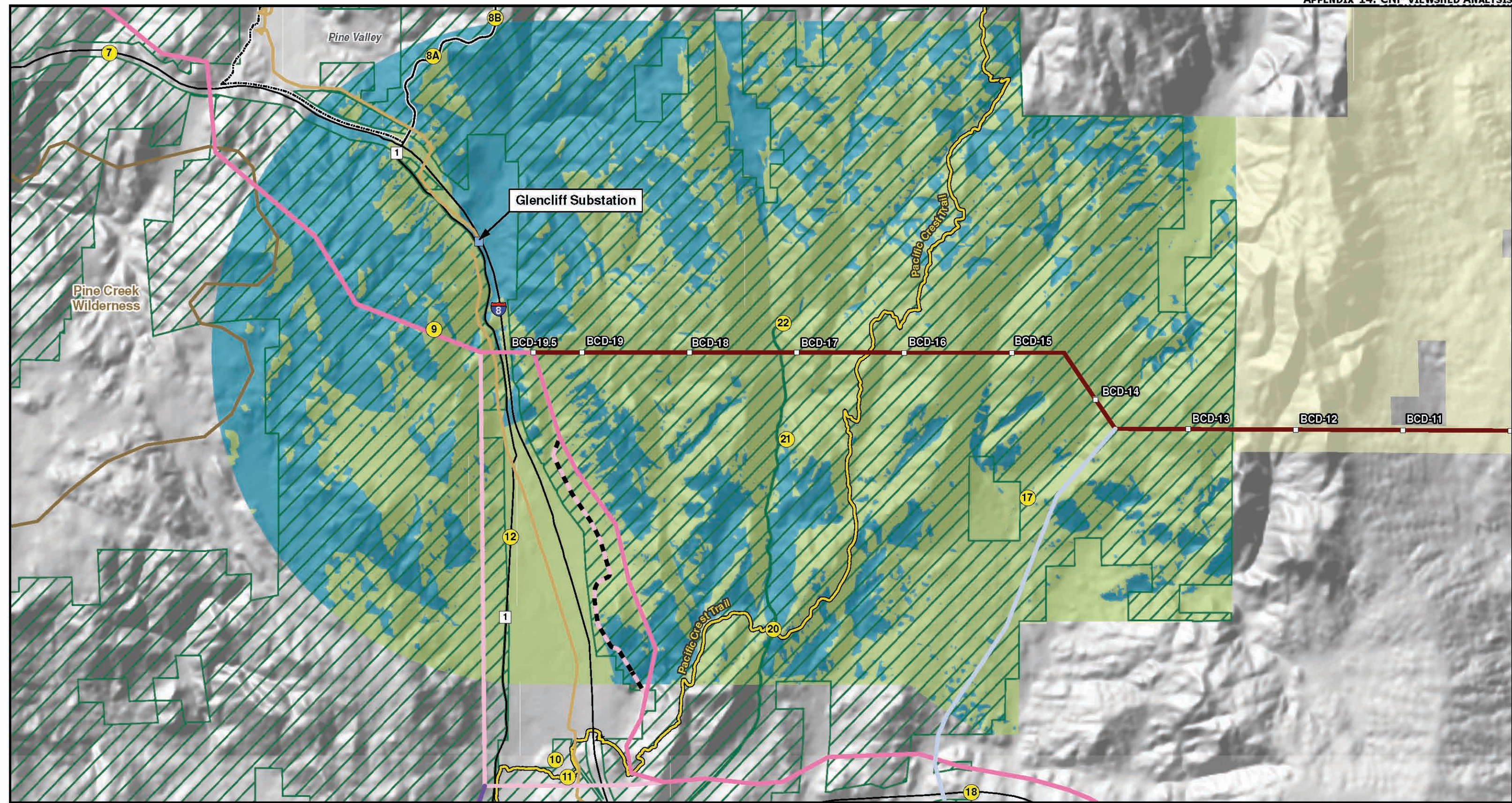
Aspen Environmental Group
HELIX Environmental Planning Inc.

0 0.5 1 Miles
 0 5,000 Feet



Sunrise Powerlink Project

Figure Ap.14-7
Cleveland National Forest Viewshed Analysis: Interstate 8 Alternative: South Buckman Springs Option

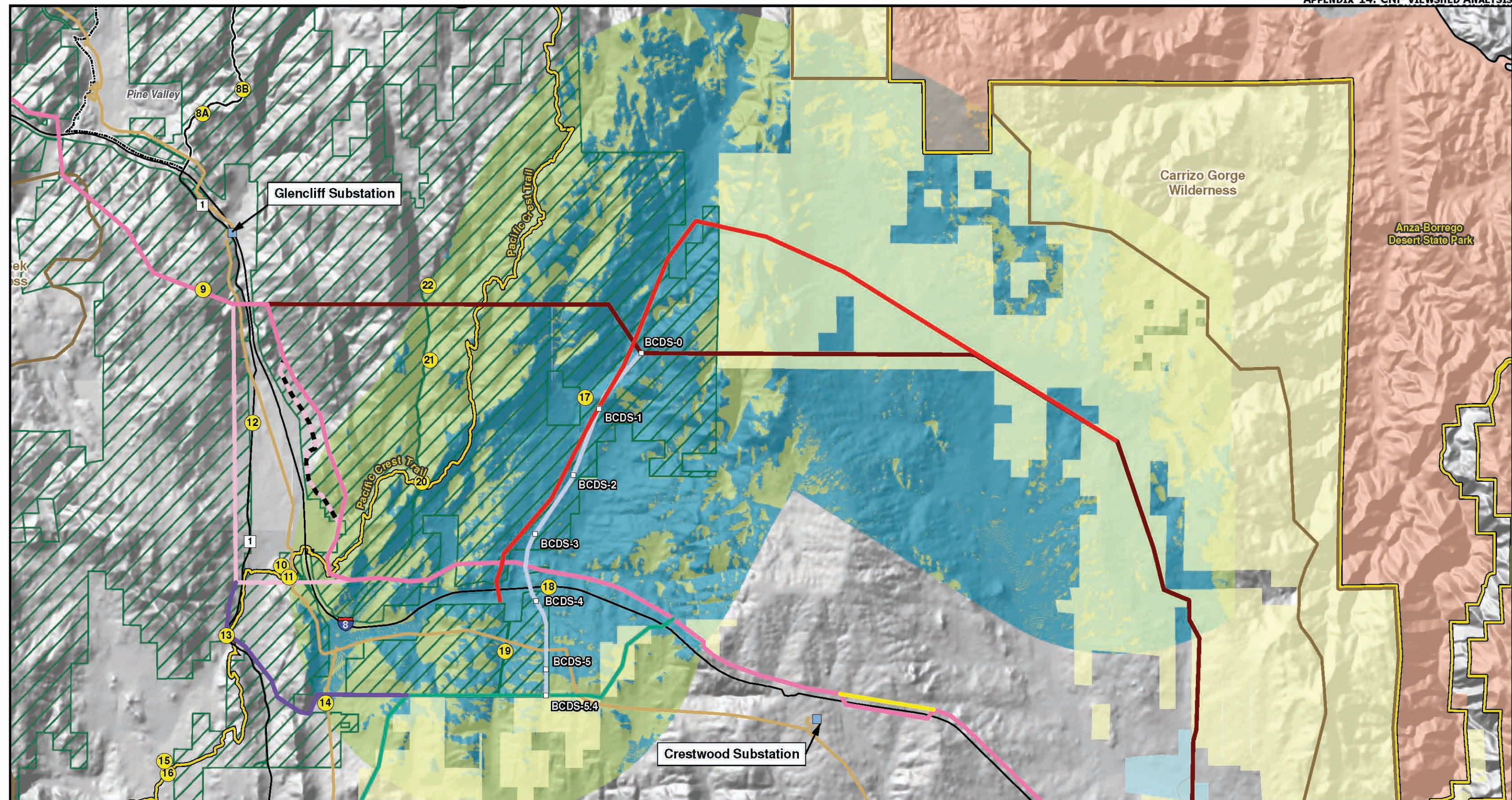


- BCD Alternative
- BCD Alternative: South Option
- Interstate 8 Alternative, Overhead Portion
- Interstate 8 Alternative: West Buckman Springs Option
- Interstate 8 Alternative: Buckman Springs Underground Option
- Interstate 8 Alternative: South Buckman Springs Option
- Existing 69 kV Transmission Line
- Major Road
- Milepost
- Substation
- Bureau of Land Management Land
- Cleveland National Forest
- Wilderness Area
- Unincorporated Town
- Recreation Areas
- Viewshed Analysis**
- Not Visible
- Visible
- ① Sensitive Viewing Area



Sunrise Powerlink Project

Figure Ap.14-8
Cleveland National Forest Viewshed Analysis: BCD Alternative



Aspen Environmental Group **HELIX Environmental Planning Inc.**

0 0.5 1 Miles
0 7,000 Feet

- BCD Alternative: South Option
- BCD Alternative
- Interstate 8 Alternative, Overhead Portion
- Interstate 8 Alternative: West Buckman Springs Option
- Interstate 8 Alternative: Buckman Springs Underground Option
- Interstate 8 Alternative: South Buckman Springs Option
- Interstate 8 Alternative: North Campo Option
- Modified Route D Alternative
- BCD South Option Revision

- Existing 69 kV Transmission Line
- Major Road
- Milepost
- Substation
- Bureau of Land Management Land
- State Land
- State Park Land
- Cleveland National Forest

- Wilderness Area
- Unincorporated Town
- Recreation Areas
- Recreation Areas

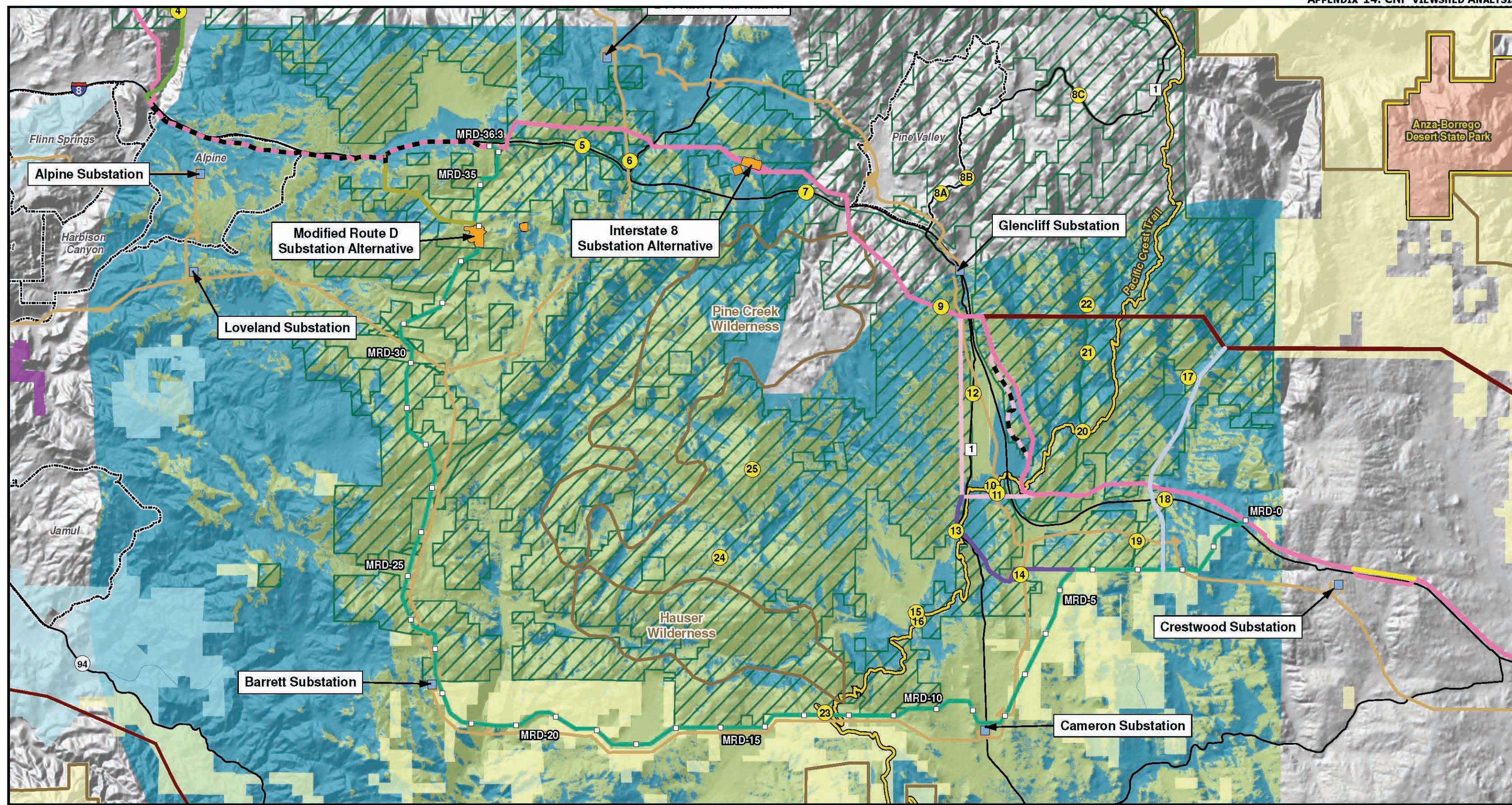
Viewshed Analysis

- Not Visible
- Visible
- Sensitive Viewing Area

Sunrise Powerlink Project

Figure Ap.14-9
Cleveland National Forest Viewshed Analysis: BCD Alternative: South Option

North Arrow



Aspen Environmental Group **HELIX Environmental Planning Inc.**

0 1 2 Miles
 0 12,000 Feet

- Modified Route D Alternative
- Modified Route D Alternative: Star Valley Option
- Interstate 8 Alternative, Overhead Portion
- Interstate 8 Alternative, Underground Portion
- Interstate 8 Alternative: West Buckman Springs Option
- Interstate 8 Alternative: Buckman Springs Underground Option
- Interstate 8 Alternative: South Buckman Springs Option

- Interstate 8 Alternative: North Campo Option
- Interstate 8 Alternative: Chocolate Canyon Option
- BCD Alternative
- BCD Alternative: South Option
- Route D Alternative
- Existing 69 kV Transmission Line
- Existing 500 kV Transmission Line
- Major Road
- Milepost

- Substation
- Substation Alternative
- Bureau of Land Management Land
- State Land
- State Park Land
- U.S. Fish and Wildlife Service Land
- Cleveland National Forest

- Wilderness Area
- Unincorporated Town
- Recreation Areas
- Recreation Areas

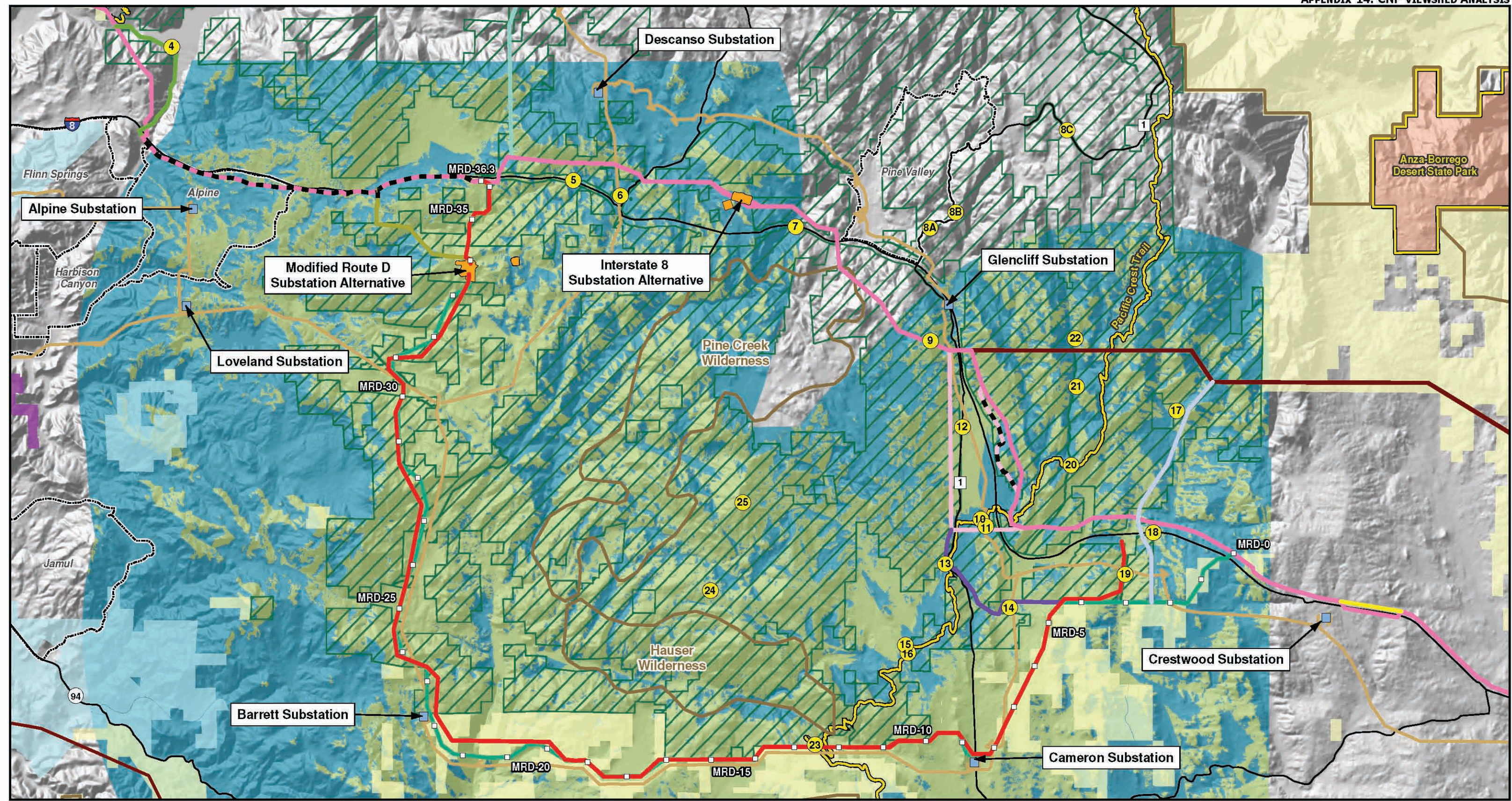
Viewshed Analysis

- Not Visible
- Visible
- Sensitive Viewing Area



Sunrise Powerlink Project

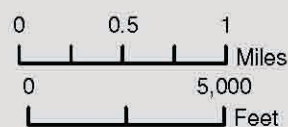
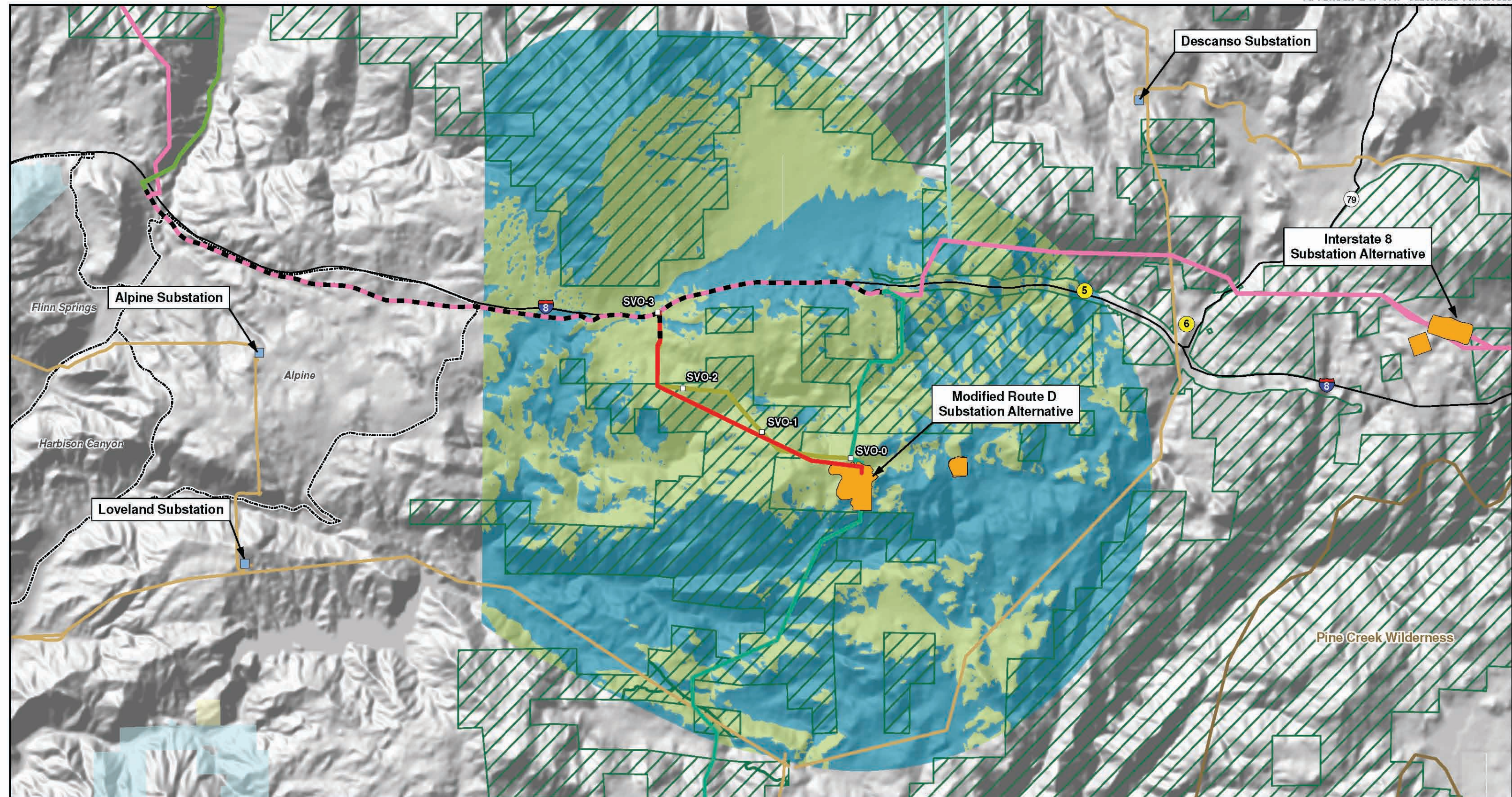
Figure A.14-10A
Cleveland National Forest Viewshed Analysis: Modified Route D Alternative (BLM)



	Modified Route D Alternative	Interstate 8 Alternative: North Campo Option	Substation	Wilderness Area
	Modified Route D Alternative: Star Valley Option	Interstate 8 Alternative: Chocolate Canyon Option	Substation Alternative	Unincorporated Town
Interstate 8 Alternative, Overhead Portion	BCD Alternative	BCD Alternative: South Option	Bureau of Land Management Land	Recreation Areas
Interstate 8 Alternative, Underground Portion	Route D Alternative	Modified Route D Alternative (USFS)	State Land	Recreation Areas
Interstate 8 Alternative: West Buckman Springs Option	Existing 69 kV Transmission Line	Existing 500 kV Transmission Line	State Park Land	U.S. Fish and Wildlife Service Land
Interstate 8 Alternative: Buckman Springs Underground Option	Major Road	Milepost	U.S. Fish and Wildlife Service Land	Cleveland National Forest
Interstate 8 Alternative: South Buckman Springs Option			Viewshed Analysis	Not Visible

Sunrise Powerlink Project

Figure Ap.14-10B
**Cleveland National Forest Viewshed
 Analysis: Modified Route D
 Alternative (USFS)**



- Modified Route D Alternative: Star Valley Option, Overhead Portion
- Modified Route D Alternative: Star Valley Option, Underground Portion
- Modified Route D Alternative
- Interstate 8 Alternative, Overhead Portion
- Interstate 8 Alternative, Underground Portion
- Interstate 8 Alternative: Chocolate Canyon Option

- Route D Alternative
- Star Valley Option Revision, Overhead Portion
- Star Valley Option Revision, Underground Portion
- Existing 69 kV Transmission Line
- Major Road
- Milepost
- Substation
- Substation Alternative

- State Land
 - Cleveland National Forest
 - Wilderness Area
- Viewshed Analysis**
- Not Visible
 - Visible
 - Sensitive Viewing Area



Sunrise Powerlink Project

Figure Ap.14-11
**Cleveland National Forest Viewshed
 Analysis: Modified Route D
 Alternative: Star Valley Option**