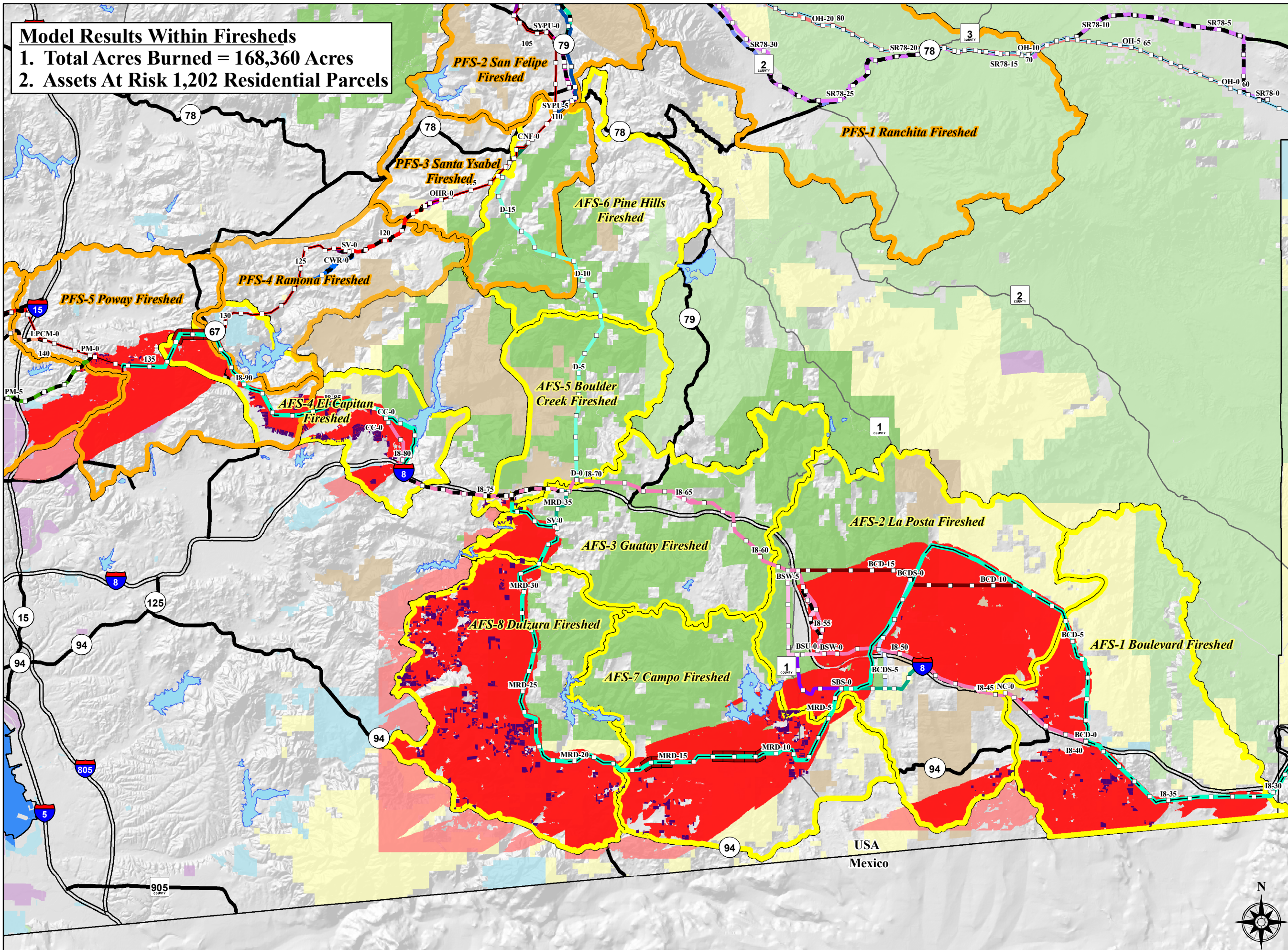


Model Results Within Firesheds

- 1. Total Acres Burned = 168,360 Acres
- 2. Assets At Risk 1,202 Residential Parcels



Proposed Project and Alternative Routes

- Environmentally Superior Southern Route, Overhead Portion
- Proposed Project Overhead 500kV
- Proposed Project Overhead 230kV
- Proposed Project Underground 230kV
- Modified Route D Alternative
- Oak Hollow Road Alternative, Overhead Portion
- Oak Hollow Road Alternative, Underground Portion
- Overhead 500 kV ABDSP within Existing ROW
- Partial Underground ABDSP SR78 to S2 Alternative, Overhead Portion
- Partial Underground ABDSP SR78 to S2 Alternative, Underground Portion
- Pomeroado Road to Miramar Area North Alternative, Overhead Portion
- Pomeroado Road to Miramar Area North Alternative, Underground Portion
- Route D Alternative
- San Vicente Road Transition Alternative, Overhead Portion
- San Vicente Road Transition Alternative, Underground Portion
- Santa Ysabel Existing ROW Alternative
- Santa Ysabel Partial Underground Alternative, Overhead Portion
- Santa Ysabel Partial Underground Alternative, Underground Portion
- Santa Ysabel SR79 All Underground Alternative, Overhead Portion
- Santa Ysabel SR79 All Underground Alternative, Underground Portion
- Top of the World Substation Alternative
- Black Mountain to Park Village Road Underground Alternative
- Central South Substation Alternative
- Chuck Wagon Road Alternative, Overhead Portion
- Chuck Wagon Road Alternative, Underground Portion
- CNF Existing 69 kV Route Alternative
- Buckman Springs Underground Option
- Campo North Option
- Interstate 8 Alternative, Overhead Portion
- South Buckman Springs Option
- Interstate 8 Alternative, Underground Portion
- West Buckman Springs Option
- Los Peñasquitos Canyon Preserve-Mercy Road Alternative
- SDG&E Mesa Grande Alternative

□ Milepost
 — Road
 — Interstate

— Proposed Project Firesheds
 — Alternative Routes Firesheds

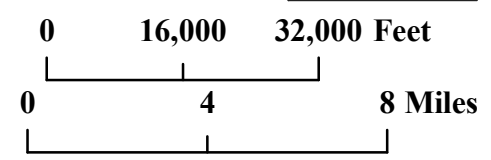
■ Wildfire Containment Conflict Model - Minimum 1.5 mile Segments
 ■ Residential Asset at Risk
 ■ Extreme Fire Weather - Fire Behavior Trend Modeled within Firesheds
 ■ Extreme Fire Weather - Estimated Fire Perimeter - Limited Fuel Model Data

Jurisdictional Land Ownership

- U.S. Forest Service Land
- Bureau of Land Management Land
- Department of Defense Land
- State Land
- State Park
- Tribal Land

Aspen Environmental Group

Forester's Co-Op
 Professional Forestry & GIS Services
 (530) 273-8326
 www.forco-op.com



Sunrise Powerlink Project

Figure Ap.3E-11
 Final Environmentally Superior Southern Route, Overhead Portion Fire Behavior Trend Model
 2 Burn Periods - Extreme Weather