

Comment Set G0014, cont.
California Botanical Habitat

Damage to Property
from SDG&E diverters and
roads not maintained

G0014-24 cont.

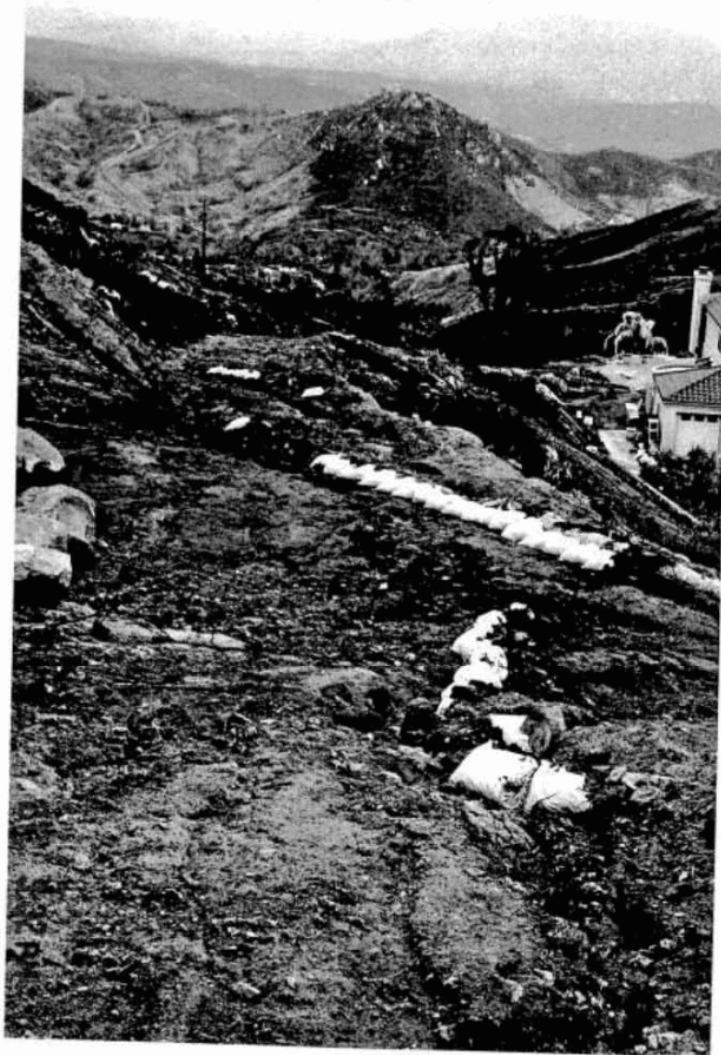


Road where water goes naturally

Significant environmental damages exist along hundreds of high-power line access roads (photos from CPUC complaints against the Powerlink by a neighbor of an existing SDG&E power line).

SDG&E Power Line Access Road During a Rain Cutting a Ravine Without Maintenance

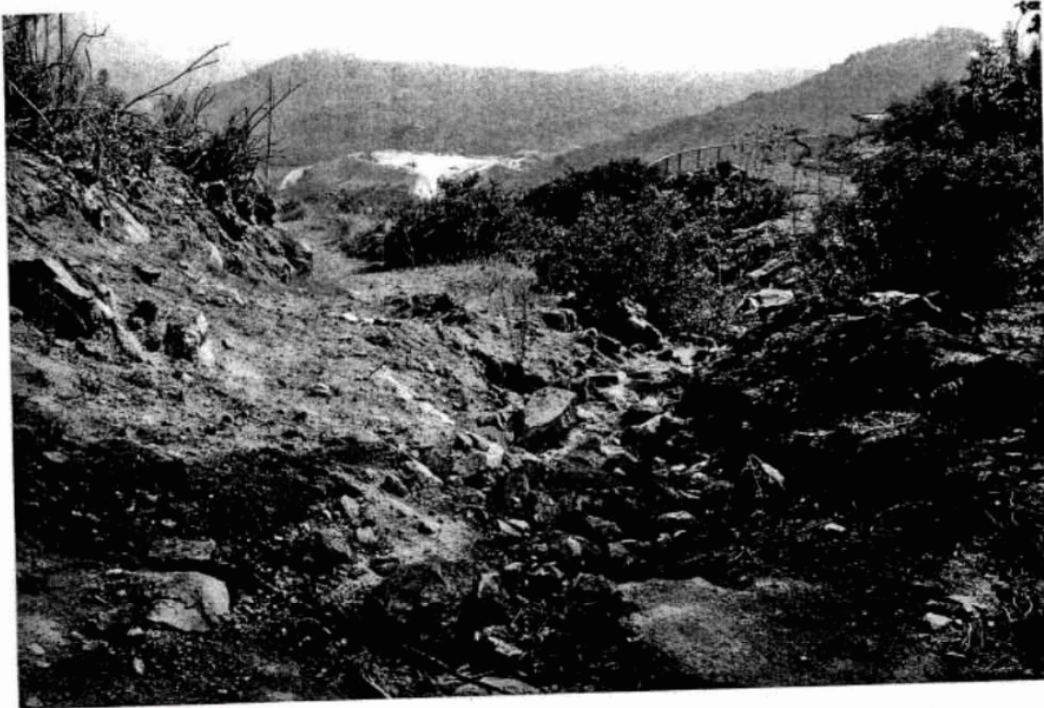
Comment Set G0014, cont.
California Botanical Habitat



G0014-24 cont.

Sandbagged by us to stop
water flowing onto lower property
created by bad diverter SOB & E
did.

Comment Set G0014, cont.
California Botanical Habitat



Unmaintained road & diverter onto our lower property

G0014-24 cont.

Comment Set G0014, cont.
California Botanical Habitat



G0014-24 cont.

This is a road they did not maintain!

Comment Set G0014, cont.
California Botanical Habitat



G0014-24 cont.

Another creek & diverter on
neighbors property crossing road

Comment Set G0014, cont.
California Botanical Habitat



*Natural flow of water across their roads from
waterfall of mountain.*

G0014-24 cont.

Comment Set G0014, cont.
California Botanical Habitat

G0014-24 cont.



Rocks piled up by SDB&E Dirt was as high as tree level



Plants washed away from attempt to culvert. Dirt onto our lower property from SDB&E

Comment Set G0014, cont.
California Botanical Habitat



Plants bulldozed up / rocks dumped by
SDG&E
5782829

G0014-24 cont.

Comment Set G0014, cont.
California Botanical Habitat



G0014-24 cont.

One area they diverted ①
onto our property after first storm.
Dirt was level with road and
was originally 3 ft wide. This is
after 1 storm.

Comment Set G0014, cont.
California Botanical Habitat



G0014-24 cont.

Sanbagged when dirt, river was higher to keep
flooding from getting worse!

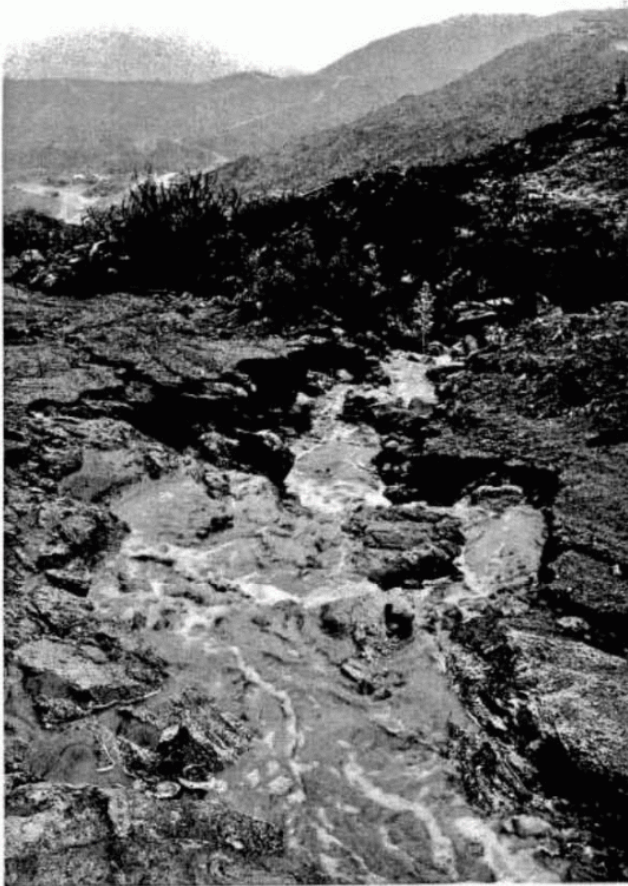
Comment Set G0014, cont.
California Botanical Habitat



G0014-24 cont.

Photo of area widening even farther than first ②
damage after 2nd storm. More dirt washed away
This dirt water goes down to Harrison Canyon where
flooding occurs.

Comment Set G0014, cont.
California Botanical Habitat



Damage to roads

G0014-24 cont.

Comment Set G0014, cont.
California Botanical Habitat



G0014-24 cont.

This truck could not make it up several
roads and had to be pulled up to put in
also

Comment Set G0014, cont. California Botanical Habitat

Perhaps during the 1930's when there were no proven technological alternatives for long-distance power transmission, as well as a far smaller population, smaller scale pylons and very few people in a seemingly unlimited wilderness who had no medical research to consider, then overhead AC high power lines were considered an unsightly but tolerable option. Now, with the availability of lower cost underground DC power lines that could save \$530,000,000 in construction costs for the Sunrise Powerlink, as well as optionally deliver 3000 megawatts, triple the 1000 megawatts planned, while offering greater reliability and security, at the same time protecting the environment and saving the people of the region well over \$20 billion; -- not to disregard low cost solar panel production, with retail sales now targeting \$1 per watt, which can provide electricity to the home at ½ cent per kilowatt hour. Apparently, the underground DC and solar options are now sufficiently well known and becoming more appealing, particularly compared to the damages and the massive economic and environmental losses that would be forced on the region with nearly 700 huge pylons for overhead high-power lines and as many access roads. Naturally, it's also extraordinary that a company could insist on causing extreme levels of environmental destruction and property losses, all without paying for the damages that would be caused, based on full replacement costs, particularly when there are far lower cost, non damaging alternatives to avoid the environmental and economic impacts altogether. While these contradictions may be incomprehensible for most anyone to understand, clearly there is an overwhelming quantity of prior evidence available in this region, which demonstrates that consideration and defense against damages is essential, particularly for an anthropological reserve with an irreplaceable wilderness habitat and extensive long-term plans and uses for this property, dedicated to its care, protection and humanitarian benefits in perpetuity. Consequently, we are asking for your consideration regarding these relevant issues, which unfortunately has not been fully addressed in prior reports.⁷

⁷ **Draft Environmental Impact Report / Environmental Impact Statement and Draft Land Use Plan Amendment, California Public Utilities Commission**
<http://www.cpuc.ca.gov/environment/info/asp/sunrise/toc-deir.htm>

G0014-24 cont.