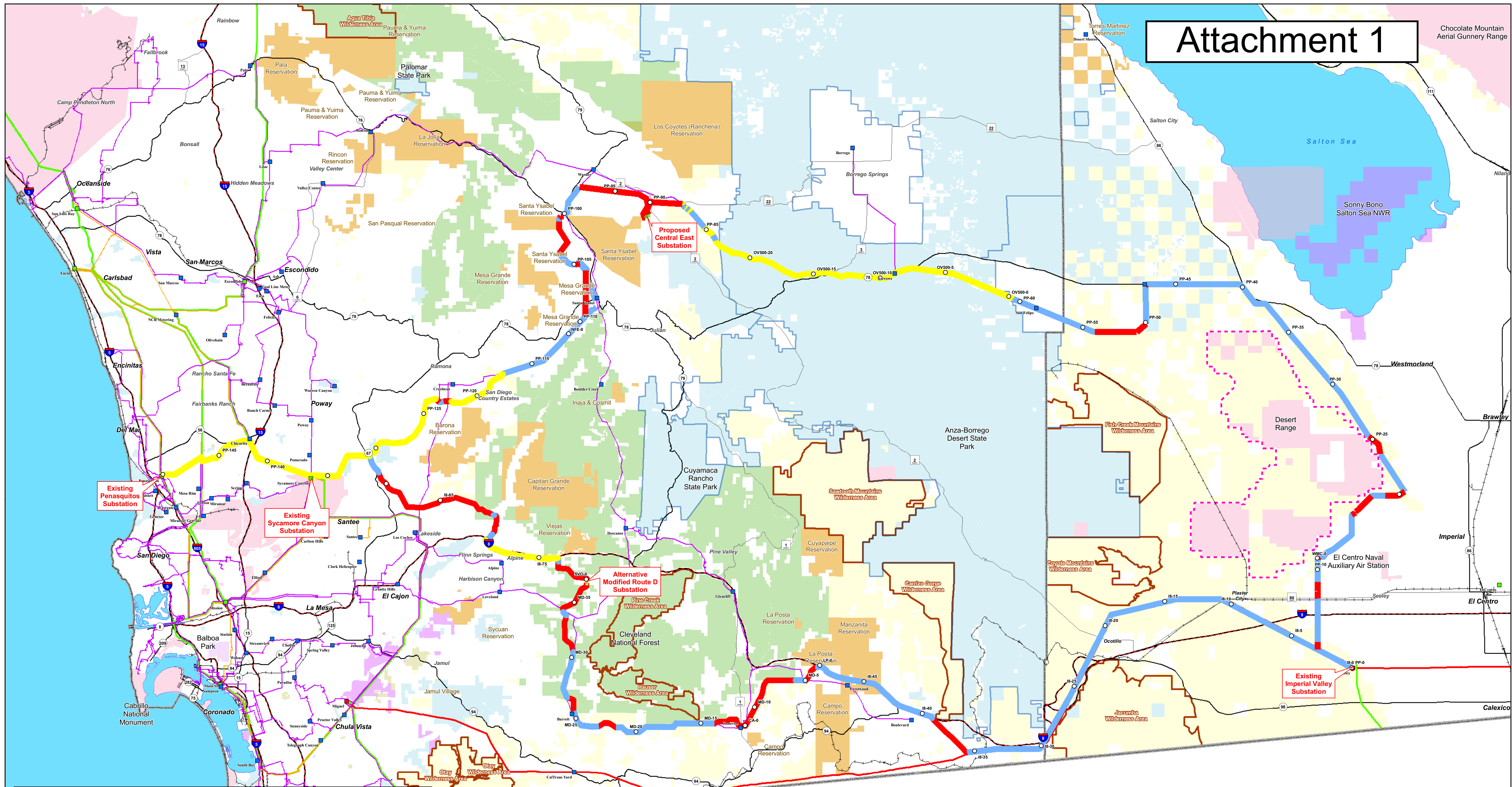
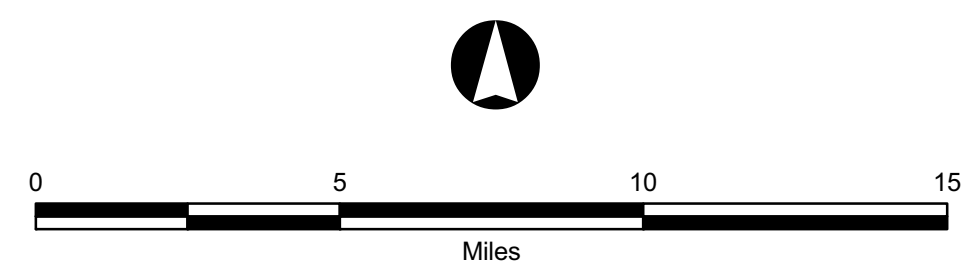


Attachment 1

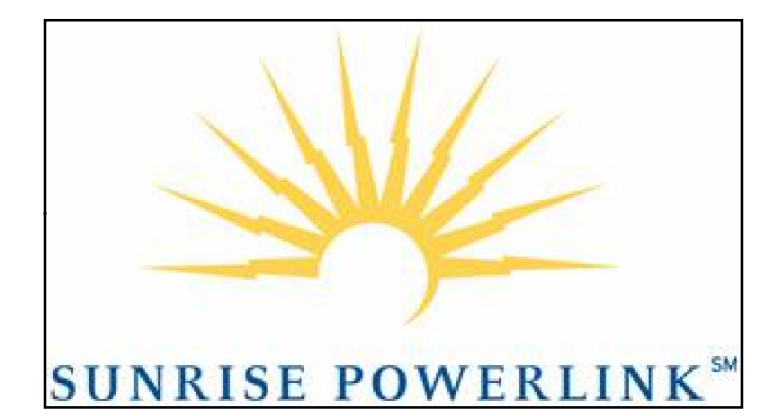


Legend

Existing 500 kV Substation	Desert Range	Jurisdictional Land Ownership
Existing 230 kV Substation	Major Water Body	Bureau of Land Management Land
Existing 138 kV / 115 kV / 69 kV Substation	State Park Boundary	U. S. Forest Service Land
Existing 500 kV Transmission Line	Federal Wilderness Area	Department of Defense Land
Existing 230 kV Transmission Line	Proposed Substation Site	Federal Land
Existing 138 kV Transmission Line	Alternative Substation Site	U. S. Fish and Wildlife Land
Existing 69 kV Transmission Line	Route Within Existing Transmission Line ROW	National Park Service Land
Existing IID Transmission Line	Route Paralleling Disturbed Linear Feature	Department of Homeland Security Land
Interstate	Route Not Within Existing Transmission Line ROW nor Paralleling Disturbed Linear Feature	Indian Land
Major Road		State Land
Road		
Railroad		
County Boundary		



State Plane Coordinate System
 California Zone 6, NAD 83
 Lambert Conformal Conic Projection
 1983 North American Datum
 Central Meridian: -116.25
 First Standard Parallel: 32.78
 Second Standard Parallel: 33.88
 False Easting: 6561866.67
 False Northing: 1640416.67
 Linear Unit: Foot US



Enhanced Northern & DEIR Southern

A Semptra Energy utility

Map Extent: San Diego and Imperial Counties, California

Date: 04/08/08 Author: gje

© projects/1994-SD&IE/Maps_Enhanced Northern & DEIR Southern 04/08/08.mxd