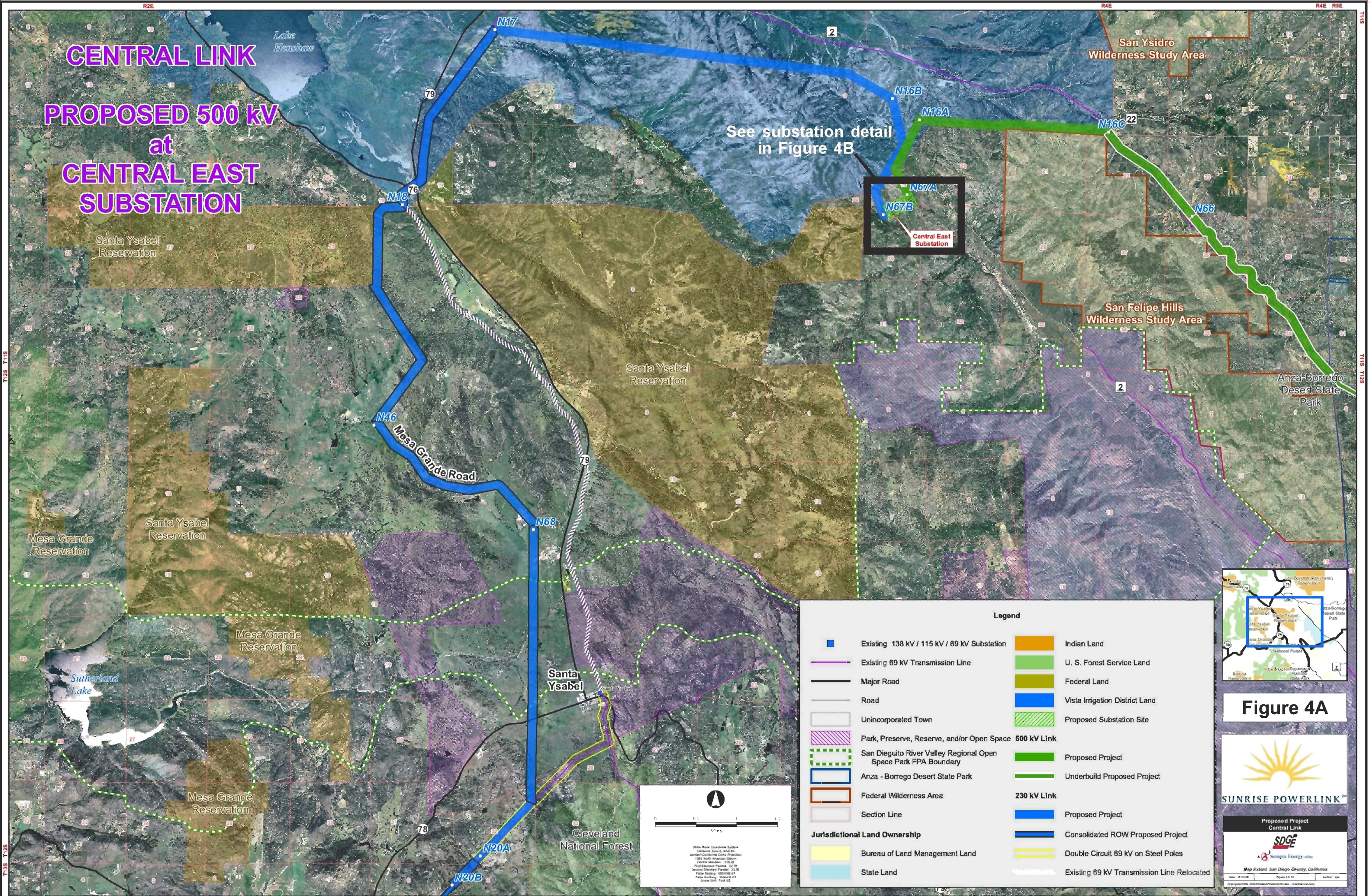


CENTRAL LINK PROPOSED 500 kV at CENTRAL EAST SUBSTATION

See substation detail
in Figure 4B



Legend

	Existing 138 kV / 115 kV / 69 kV Substation		Indian Land
	Existing 69 kV Transmission Line		U. S. Forest Service Land
	Major Road		Federal Land
	Road		Vista Irrigation District Land
	Unincorporated Town		Proposed Substation Site
	Park, Preserve, Reserve, and/or Open Space		500 kV Link
	San Dieguito River Valley Regional Open Space Park FPA Boundary		Proposed Project
	Anza - Borrego Desert State Park		Underbuild Proposed Project
	Federal Wilderness Area		230 kV Link
	Section Line		Proposed Project
	Bureau of Land Management Land		Consolidated ROW Proposed Project
	State Land		Double Circuit 69 kV on Steel Poles
			Existing 69 kV Transmission Line Relocated

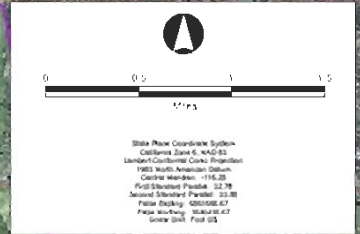


Figure 4A

Proposed Project
CENTRAL LINK

Map Extent: San Diego County, California