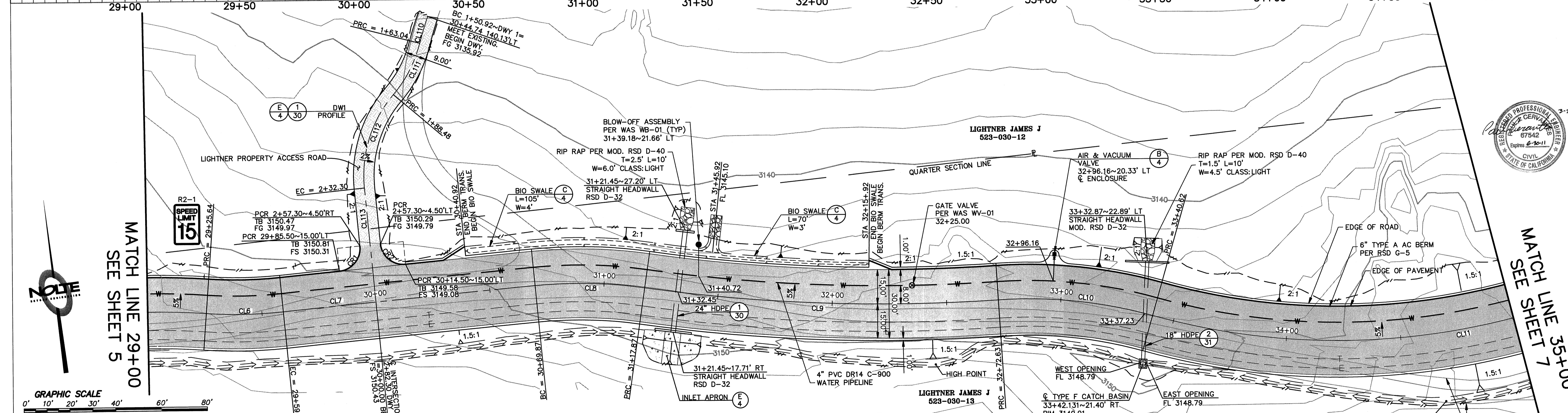


LP 3146.70
 LP 31+45.92
 PVI 31+05
 PV 3145.97
 A.D. = 5.50
 K = 27.28
 150.00' VC

HP 3149.24
 HP 33+80.77
 PVI 34+78
 PV 3146.63
 A.D. = -11.24
 K = 22.25
 250.00' VC



DRIVEWAY CENTERLINE DATA TABLE

SYMBOL	DELTA/BEARING	RADIUS	LENGTH
CL110	04°05'31"	169.84'	12.12'
CL111	26°15'46"	55.50'	25.44'
CL112	46°04'13"	54.50'	43.82'
CL113	S01°40'44"W	...	50.00'

CENTERLINE DATA TABLE

SYMBOL	DELTA/BEARING	RADIUS	LENGTH
CL6	09°39'04"	200.00'	33.69'
CL7	N88°19'16"W	...	110.55'
CL8	13°45'03"	200.00'	48.00'
CL9	11°49'21"	750.00'	154.76'
CL10	19°28'43"	200.00'	67.99'
CL11	53°24'45"	300.00'	279.67'

CURB RETURN DATA TABLE

SYMBOL	DELTA/BEARING	RADIUS	LENGTH
CR1	90°00'00"	10.00'	15.71'
CR2	90°00'00"	10.00'	15.71'

- NOTE:
1. LINES/CURVES SHOWN ON THE DATA TABLE ARE NOT BROKEN AT MATCH LINES. LENGTHS ARE COMPREHENSIVE. CONTRACTOR SHALL USE DEFLECTION COUPLINGS TO INSTALL THE 4" PVC DR14 C-900 WATER PIPELINE ALONG CURVES. ALLOWABLE LENGTHS OF PIPE SECTIONS THROUGH CURVES ARE 20', 10', OR 5'. WATERLINE IS 8.0 FEET LEFT OF CENTERLINE.
 2. TELECOMMUNICATION AND ELECTRICAL LINE PER SEPARATE PLAN.
 3. USE 10' TO TRANSITION TO THE LEFT AND RIGHT EDGE OF DRIVEWAY TO MEET EXISTING GROUND. THE CROSS SLOPE IN THIS TRANSITION WILL VARY.

REVISIONS



SAN DIEGO GAS & ELECTRIC COMPANY
 SAN DIEGO, CALIFORNIA

SUNCREST SUBSTATION ACCESS ROAD

PLAN & PROFILE

SCALE: 1"=20' W.O.: - REV.: 0

DRAWN BY: DHT DATE: 3/24/10
 CHECKED BY: PJC DATE: -
 APPROVED BY: CR DATE: - SHEET 6 OF 55
 CAD NO.: IPPY06 PLOT SCALE: 1=1

SCR-C-206

N:\SD039600\CADD\USFS\CIVIL\IP-PVT\IPPY06