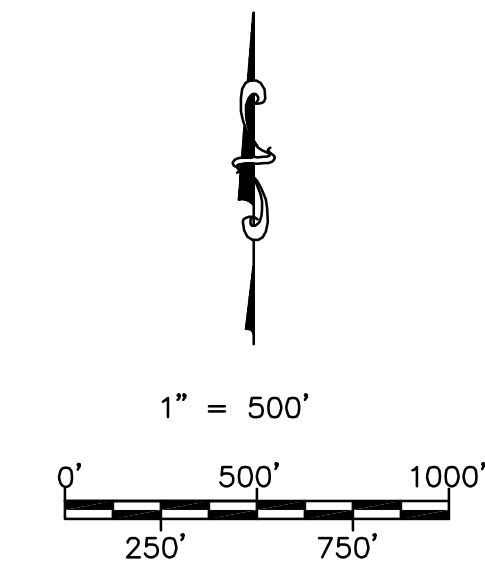
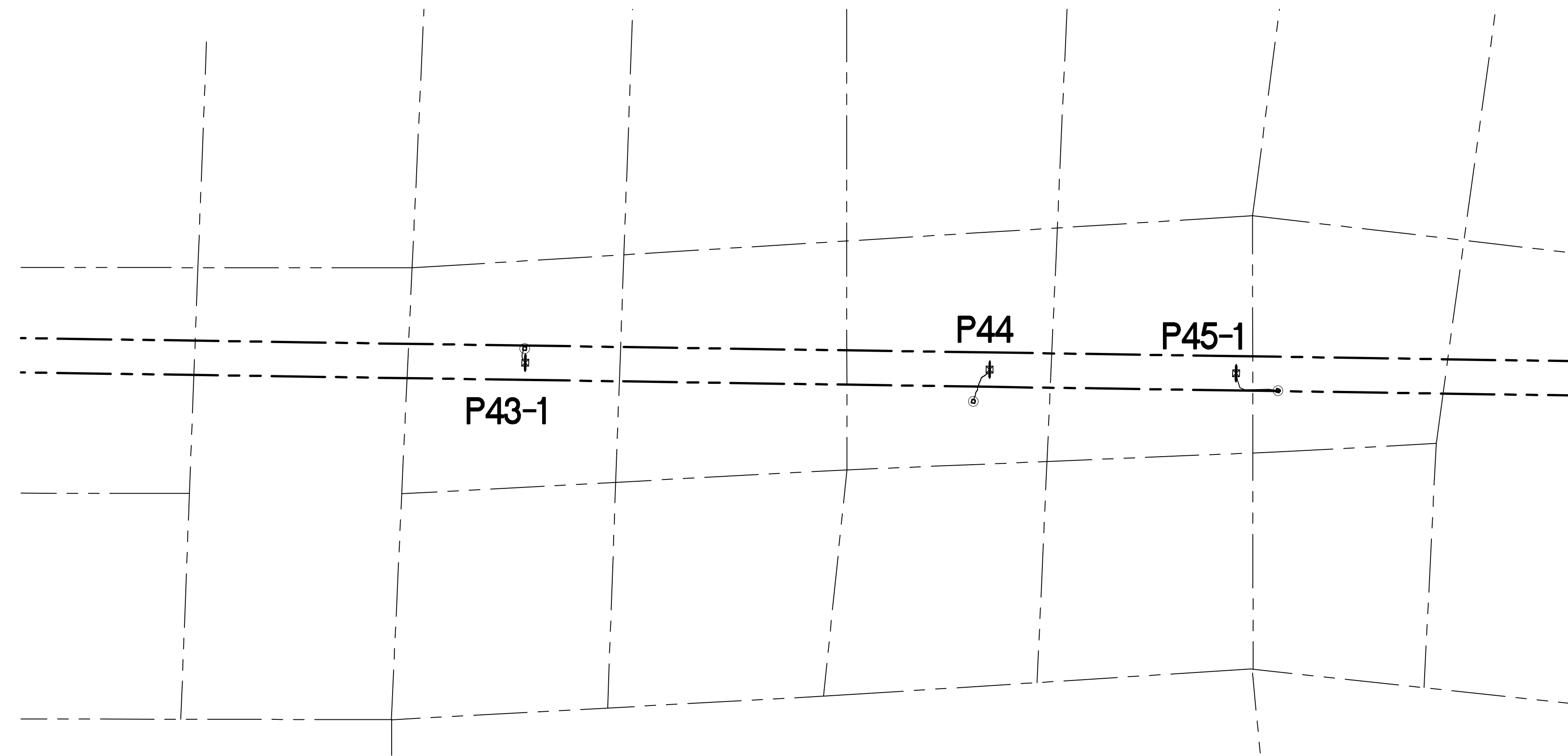


# SUNRISE POWERLINK PROJECT

## SECTION 08B (LINK 2)

### 500kV LINE



OFF-SITE WORK TO BE DONE

<u>SITE / ACCESS ROAD</u>	<u>SHEET NUMBER</u>
KEY MAP + MINOR ACCESS ROAD IMPROVEMENTS	08B-P43-1-P45-1-KEY01

TOWER STAGING / ACCESS PAD  
ON-SITE WORK TO BE DONE

<u>SITE / ACCESS ROAD</u>	<u>SHEET NUMBER</u>
SITE P-43-1	08B-P43-1-TSAP
SITE P-44	08B-P44-TSAP
SITE P-45-1	08B-P45-1-TSAP

**DECLARATION OF RESPONSIBLE CHARGE**

I HEREBY DECLARE THAT I AM THE ENGINEER OF WORK FOR THIS PROJECT, THAT I HAVE EXERCISED RESPONSIBLE CHARGE OVER THE DESIGN OF THE PROJECT AS DEFINED IN SECTION 6703 OF THE BUSINESS AND PROFESSIONS CODE, AND THAT THE DESIGN IS CONSISTENT WITH THE CURRENT STANDARDS.

I UNDERSTAND THAT THE CHECK OF PROJECT DRAWINGS AND SPECIFICATIONS BY SDG&E IS CONFINED TO A REVIEW ONLY AND DOES NOT RELIEVE ME, AS ENGINEER OF WORK, OF MY RESPONSIBILITIES FOR PROJECT DESIGN.

STEPHEN K. SMITH  
R.C.E. NO. 29708      EXP. 03-31-11      DATE

REVISIONS

NO.	WORK DONE	DATE	BY:	APP'D:	NO.	NO.	WORK DONE	DATE	BY:	APP'D:	NO.

SAN DIEGO GAS & ELECTRIC COMPANY  
SAN DIEGO, CALIFORNIA

SPL-08B (LINK 2)  
TITLE SHEET

DRAWN BY:	DATE: --/--	SCALE: AS NOTED	W.O.    REV.    0
CHECKED BY:	DATE:		
APPROVED BY:	DATE:		
CAD NO:	PLOT SCALE: 1 = 1		

SPL-08B-001

P:\161919 SDG&E SPL\CADD\08B\plan\08B-CV\01.dwg\key-21-201012149



**Bureau Veritas North America**  
11590 West Bernardo Court Suite 100  
San Diego, CA 92127-1624  
Tel: (858) 451-6100 Fax: (858) 451-2846  
www.us.bureauveritas.com



**GENERAL NOTES**

THE FOLLOWING NOTES ARE PROVIDED TO GIVE DIRECTION TO THE CONTRACTOR BY THE ENGINEER OF WORK:

- ALL WORK SHALL COMPLY WITH ALL APPLICABLE PORTIONS OF THE PROJECT SPECIFICATIONS.
- NEITHER THE OWNER, NOR THE ENGINEER OF WORK WILL ENFORCE SAFETY MEASURES OR REGULATIONS. THE CONTRACTOR SHALL DESIGN, CONSTRUCT AND MAINTAIN ALL SAFETY DEVICES, INCLUDING SHORING. THE CONTRACTOR SHALL BE RESPONSIBLE FOR CONFORMING TO ALL LOCAL, STATE, AND FEDERAL SAFETY AND HEALTH STANDARDS, LAWS AND REGULATIONS.
- IT SHALL BE THE CONTRACTOR'S RESPONSIBILITY TO PLACE, SPREAD, WATER AND COMPACT ALL FILL IN STRICT ACCORDANCE WITH PROJECT SPECIFICATIONS. A GEOTECHNICAL ENGINEER WILL BE THE OWNER'S REPRESENTATIVE TO INSPECT THE CONSTRUCTION OF FILLS. THE EXCAVATION AND THE PLACEMENT OF FILL WILL BE UNDER THE DIRECT INSPECTION OF THE GEOTECHNICAL ENGINEER, AND HE WILL GIVE WRITTEN NOTICE OF CONFORMANCE WITH THE SPECIFICATIONS UPON COMPLETION OF GRADING. DEVIATIONS FROM PROJECT SPECIFICATIONS WILL BE PERMITTED ONLY UPON WRITTEN AUTHORIZATION FROM THE GEOTECHNICAL ENGINEER OR THE SDG&E REPRESENTATIVE.
- OBSERVATIONS AND COMPACTION TESTS WILL BE MADE BY THE GEOTECHNICAL ENGINEER DURING THE FILLING AND COMPACTING OPERATIONS SO THAT HE CAN STATE HIS OPINION THAT THE FILL WAS CONSTRUCTED IN ACCORDANCE WITH PROJECT SPECIFICATIONS.
- DURING CONSTRUCTION: THE CONTRACTOR SHALL GRADE ALL EXCAVATED AND FILLED SURFACES TO PROVIDE POSITIVE DRAINAGE AND PREVENT PONDING OF WATER. HE SHALL CONTROL SURFACE WATER TO AVOID DAMAGE TO ADJOINING PROPERTIES OR TO FINISH WORK ON THE SITE. THE CONTRACTOR SHALL TAKE REMEDIAL MEASURES TO PREVENT EROSION OF FRESHLY GRADED AREAS, AND UNTIL SUCH TIME AS PERMANENT DRAINAGE AND EROSION CONTROL MEASURES HAVE BEEN INSTALLED. AFTER GRADING IS COMPLETED AND THE GEOTECHNICAL ENGINEER HAS FINISHED HIS OBSERVATIONS OF THE WORK, NO FURTHER EXCAVATION OR FILLING SHALL BE DONE, EXCEPT UNDER THE OBSERVATION OF THE GEOTECHNICAL ENGINEER.
- CONTRACTOR SHALL TAKE THE NECESSARY PRECAUTIONS REQUIRED TO PROTECT ADJACENT PROPERTIES DURING THE GRADING OPERATIONS.
- BRUSH AND TREES SHALL BE REMOVED ONLY WITHIN THE AREA TO BE GRADED. WHEN TREES ARE REMOVED, THE ROOT SYSTEMS SHALL ALSO BE REMOVED AND THE RESULTING EXCAVATION FILLED WITH PROPERLY COMPACTED FILL SOILS.
- CUT AND FILL SLOPES SHALL BE TRIMMED TO THE FINISH GRADE TO PRODUCE A SMOOTH AND UNIFORM SURFACE OR CROSS-SECTION. THE SLOPES OF EXCAVATIONS OR EMBANKMENTS SHALL BE SHAPED AND TRIMMED AS DIRECTED BY THE SDG&E REPRESENTATIVE AND LEFT IN A NEAT AND ORDERLY CONDITION. ALL STONES, ROOTS, OR OTHER WASTE MATTER EXPOSED ON EXCAVATION OR EMBANKMENT SLOPE SHALL BE REMOVED AND DISPOSED OF.
- GRADING SHALL BE DONE WITHIN A TOLERANCE OF ±0.1' OF THE GRADES AND ELEVATIONS SHOWN ON THESE PLANS AND ALL SLOPES SHALL BE CONSTRUCTED WITHIN ±0.5' OF THE LOCATION SHOWN ON THESE PLANS. IN NO WAY SHALL THE ABOVE TOLERANCES RELIEVE THE CONTRACTOR OF THE RESPONSIBILITY OF PROVIDING A FINISH THAT WILL NOT POND WATER.
- ANY QUANTITIES INDICATED ON THESE PLANS ARE ENGINEERS' ESTIMATES ONLY AND ARE NOT TO BE USED BY CONTRACTOR FOR BIDDING PURPOSES.
- CONTRACTOR SHALL VERIFY EXISTING CONDITIONS IN THE FIELD AND BRING DISCREPANCIES TO THE ATTENTION OF THE SDG&E REPRESENTATIVE PRIOR TO STARTING CONSTRUCTION.
- STANDARD DRAWINGS SHALL CONFORM TO SAN DIEGO REGIONAL STANDARD DRAWINGS (SDRSD), APRIL 2006.
- THERE ARE ENVIRONMENTALLY SENSITIVE AREAS THROUGHOUT THE PROJECT THAT ARE NOT SHOWN ON THESE PLANS. YOU ARE RESPONSIBLE FOR KNOWING WHERE THESE AREAS ARE. REFER TO YOUR ENVIRONMENTAL MAPBOOK AND ONE TOUCH FOR UP TO DATE INFORMATION.

**EROSION CONTROL NOTES**

- ALL POLE & TOWER MAINTENANCE PADS TO BE DIKED AND THE DIKES MAINTAINED TO PREVENT WATER FROM FLOWING FROM THE PADS WITHOUT CAUSING EROSION, OR CONSTRUCT DRAINAGE FACILITIES TO THE SATISFACTION OF THE COUNTY DEPARTMENT OF PUBLIC WORKS THAT WILL ALLOW WATER TO DRAIN FROM THE PAD WITHOUT CAUSING EROSION.
- TOPS OF ALL SLOPES TO BE DIKED OR TRENCHED TO PREVENT WATER FROM FLOWING OVER THE CREST OF SLOPES.
- ALL GRADED CUT OR FILL SLOPES SHALL BE HYDROSEEDED TO PROTECT THE SLOPE FROM EROSION AND INSTABILITY IN ACCORDANCE WITH PROJECT SPECIFICATIONS.
- FIBER ROLLS SHALL BE PLACED AT TOP, TOE AND FACE (15 FOOT INTERVALS) OF GRADED ALL CUT AND FILL SLOPES TO INTERCEPT RUNOFF AND REDUCE EROSION IN ACCORDANCE WITH PROJECT SPECIFICATIONS.

**ABBREVIATIONS**

- (EG) EXISTING GRADE
- FG FINISHED GRADE
- TW TOP OF WALL
- BW BOTTOM OF WALL AT FINISHED GROUND
- FL FLOW LINE
- U/S UP STREAM
- D/S DOWN STREAM
- CMP CORRUGATED METAL PIPE
- RC RELATIVE COMPACTION

**LEGEND**

- SECTION
- INDICATES NEW TOWER
- INDICATES EXISTING STEEL POLE
- WATER BAR PER DETAIL  $\frac{5}{4}$
- BROW DITCH OR DETAIL  $\frac{3}{3}$
- DIP SECTION PER DETAIL  $\frac{4}{4}$
- VERTICAL PROFILE F.G. ELEV. ABOVE  
VERTICAL PROFILE E.G. ELEV. BELOW
- NEW TRANSMISSION LINE
- (F.G.) FINISH GRADE CONTOURS
- (E.G.) EXISTING GRADE CONTOURS
- EXISTING GROUND ELEVATION
- FILL SLOPE 2:1 UNLESS SHOWN OTHERWISE
- CUT SLOPE 2:1 UNLESS SHOWN OTHERWISE
- RIDGE LINE
- DAYLIGHT LINE
- DIRECTION OF FLOW
- CUT/FILL LINE
- CONCRETE DOWN DRAIN, SEE DETAIL  $\frac{1}{3}$
- RIPRAP ENERGY DISSIPATOR, SEE DETAIL  $\frac{2}{3}$
- CORRUGATED METAL PIPE WITH FLARED END SECTIONS, SEE PLANS FOR PIPE SIZES, AND ENERGY DISSIPATOR.  $\frac{6}{4}$
- DETAIL LABEL  $\frac{X}{XX}$  DETAIL # SHEET #

**REVISIONS**

NO.	WORK DONE	DATE	BY:	APP'D:	NO.	WORK DONE	DATE	BY:	APP'D:	NO.	WORK DONE	DATE	BY:	APP'D:	NO.

SAN DIEGO GAS & ELECTRIC COMPANY  
SAN DIEGO, CALIFORNIA

SPL-08B (LINK 2)  
LEGEND & GENERAL NOTES

DRAWN BY: JJP	DATE: --/--	SCALE: AS NOTED	W.O.	REV. 0
CHECKED BY:	DATE:			
APPROVED BY:	DATE:			
CAD NO.:	PLOT SCALE: 1=1			

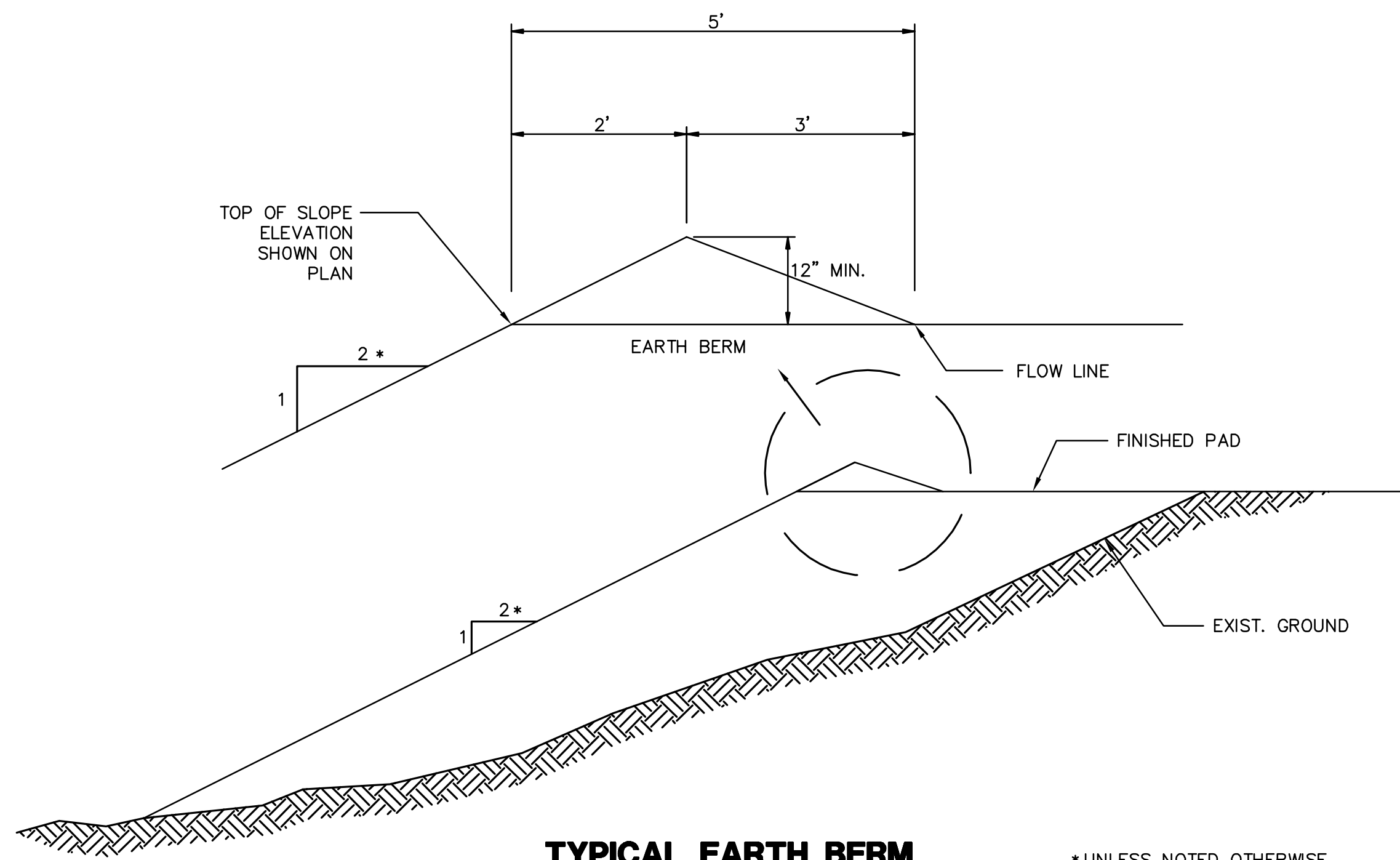
SPL-08B-002



**Bureau Veritas North America**  
11590 West Bernardo Court Suite 100  
San Diego, CA 92127-1624  
Tel: (858) 451-6100 Fax: (858) 451-2846  
www.us.bureauveritas.com



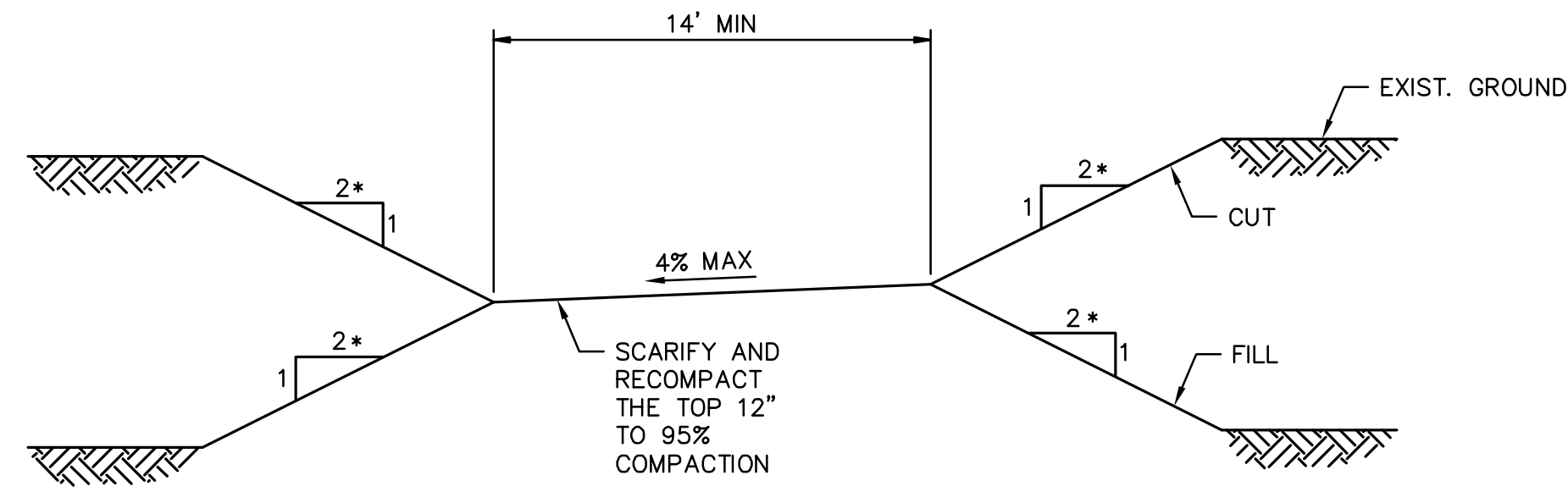
P:\161919 SDG&E SPL\CADD\08B\08B.dwg\p1gnr\08B-CV\02GNT.dwg\lmoj-21-2010\12\49



**TYPICAL EARTH BERM**

NTS  
TO BE PLACED ON TOP OF ALL FILL SLOPES.

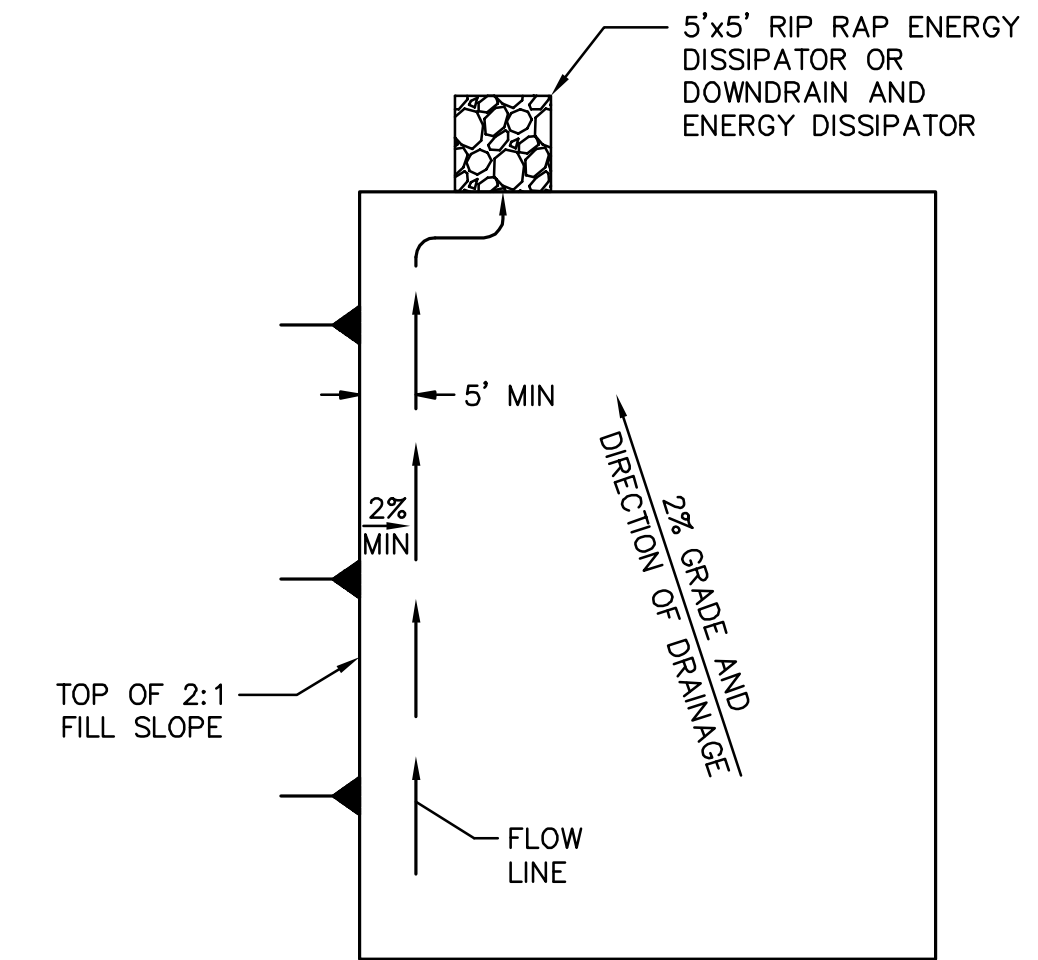
\* UNLESS NOTED OTHERWISE



**TYPICAL NEW ACCESS ROAD SECTION**

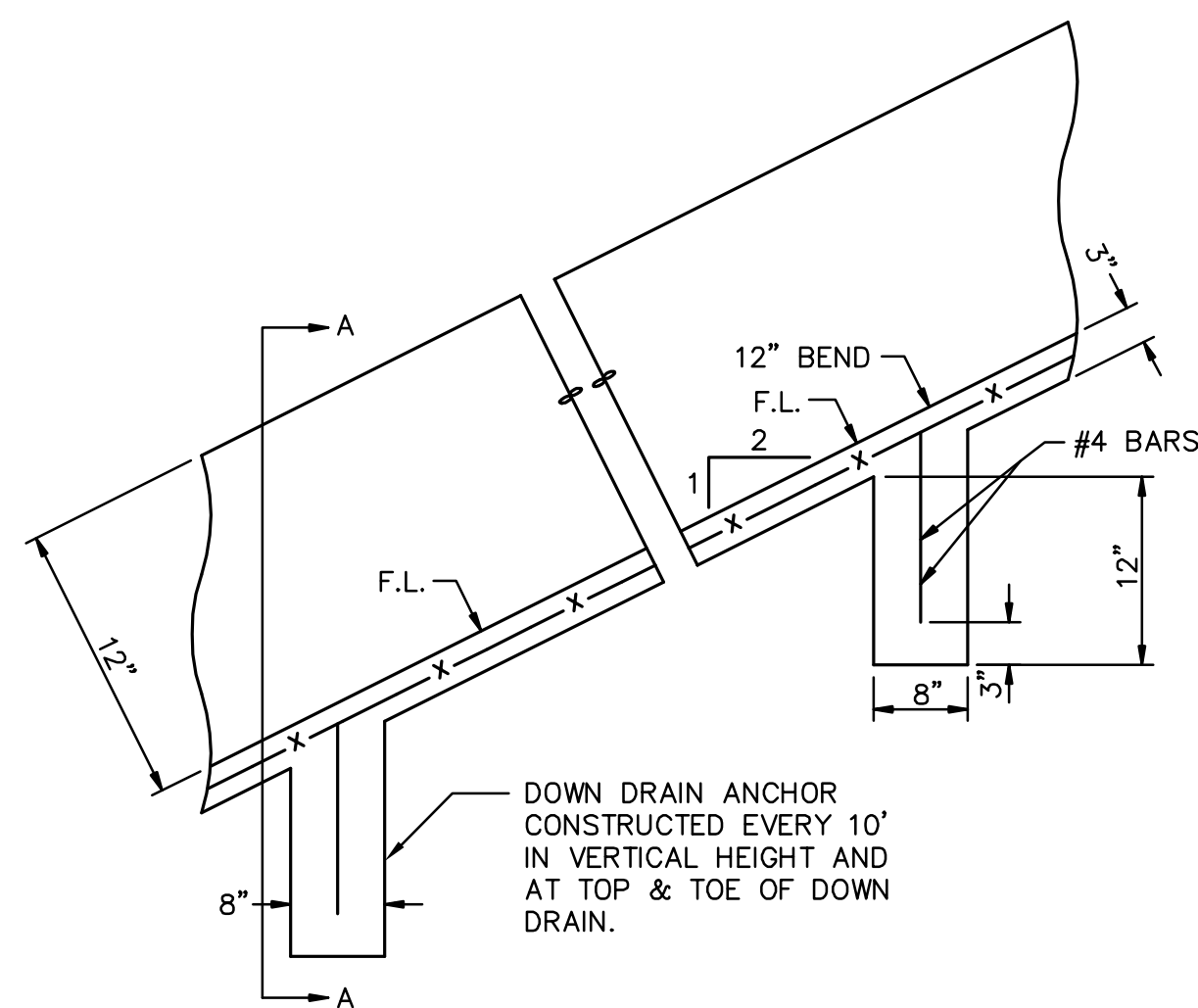
NTS

\* UNLESS NOTED OTHERWISE



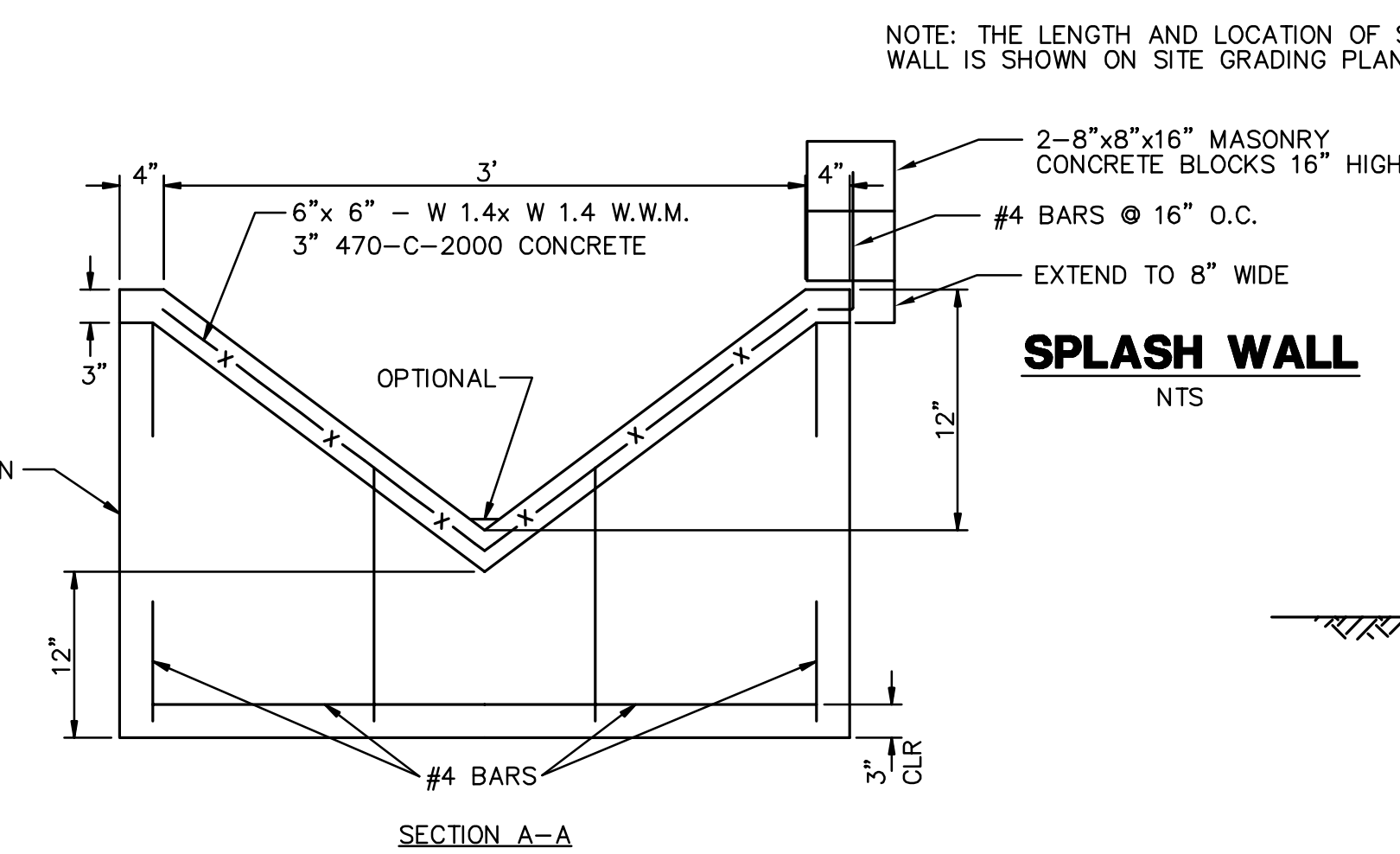
**TYPICAL PAD DRAINAGE LAYOUT**

NTS



**DOWN DRAIN**

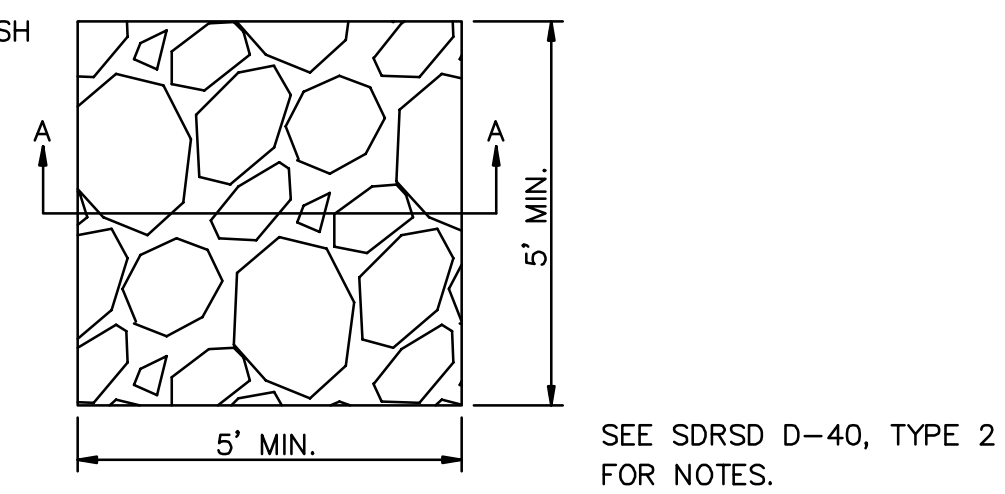
NTS



**SPLASH WALL**

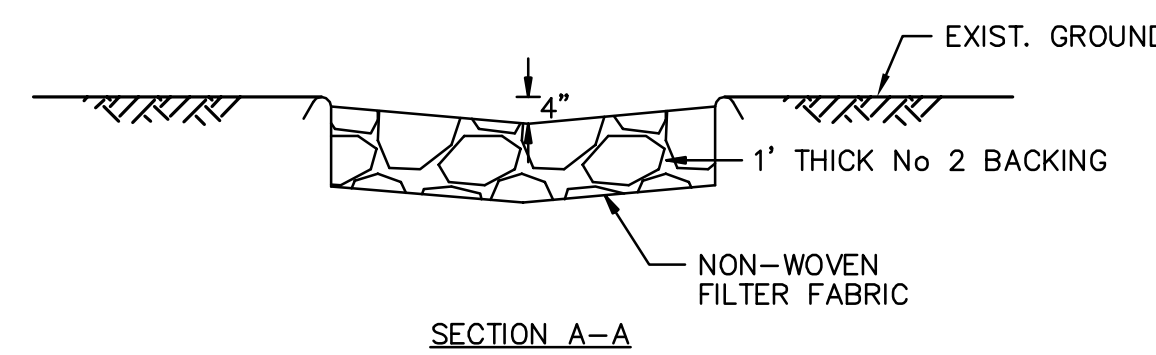
NTS

NOTE: THE LENGTH AND LOCATION OF SPLASH WALL IS SHOWN ON SITE GRADING PLAN.

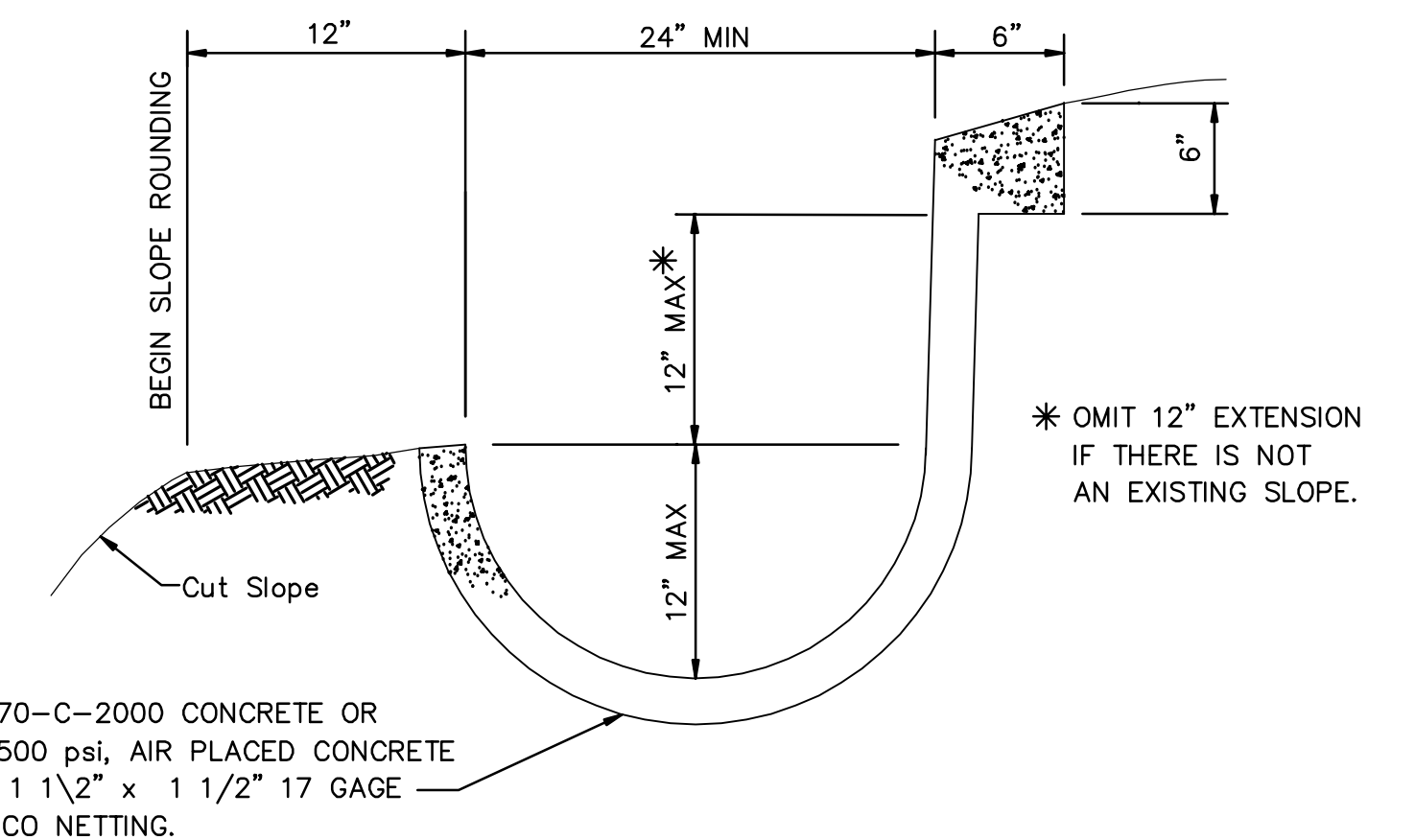


**RIPRAP ENERGY DISSIPATOR**

NTS



SECTION A-A



**BROW AND/OR DRAINAGE DITCH**

NTS

LONGITUDINAL SLOPE OF LINED DITCH SHALL BE 2% MINIMUM.

**GENERAL DETAILS**

**REVISIONS**

NO.	WORK DONE	DATE	BY:	APP'D:	NO.	WORK DONE	DATE	BY:	APP'D:	NO.	WORK DONE	DATE	BY:	APP'D:

SAN DIEGO GAS & ELECTRIC COMPANY  
SAN DIEGO, CALIFORNIA

SPL-08B (LINK 2)

DETAIL SHEET 1 OF 2

DRAWN BY: 00	DATE:	SCALE: NTS	W.O.	REV. 0
CHECKED BY:	DATE:			
APPROVED BY:	DATE:			
CAD NO.:	PLOT SCALE: 1 = 1			

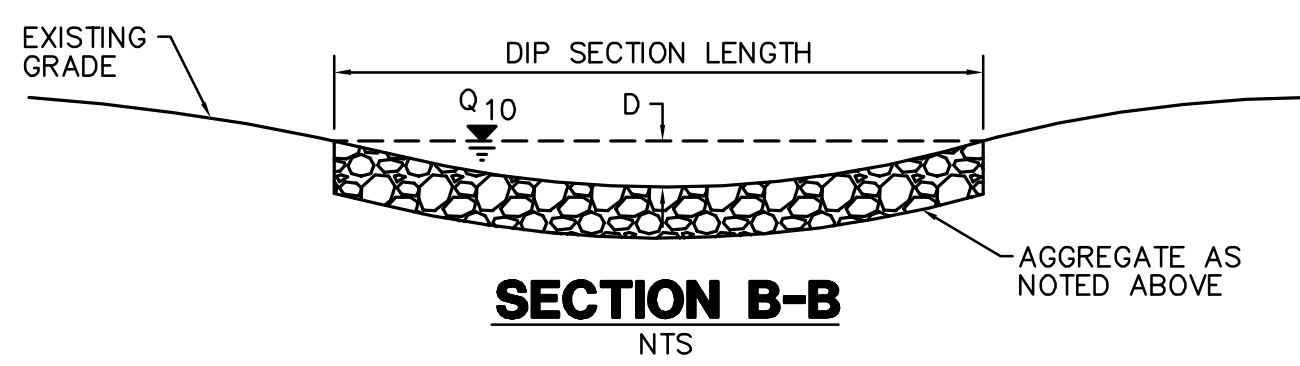
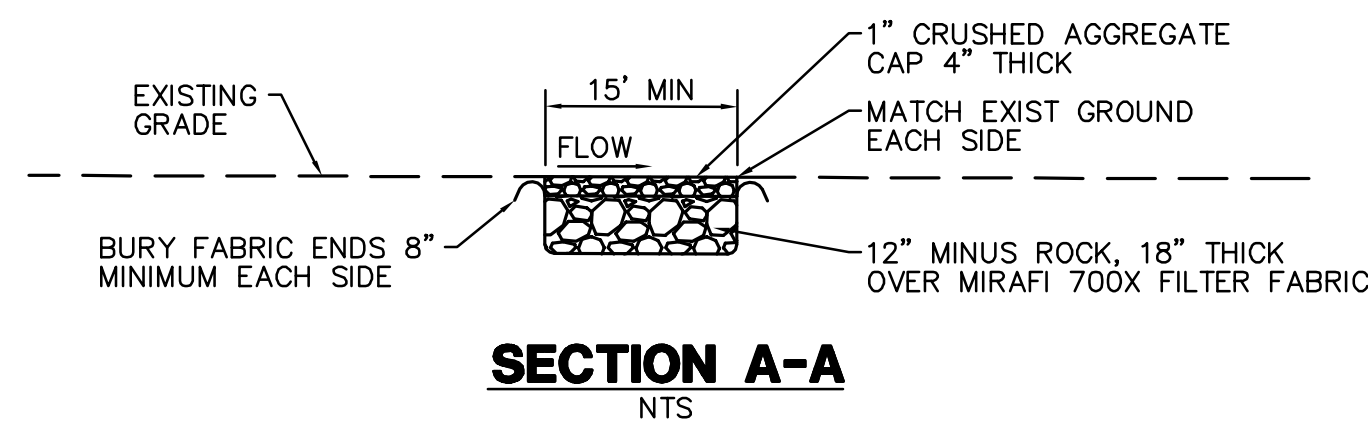
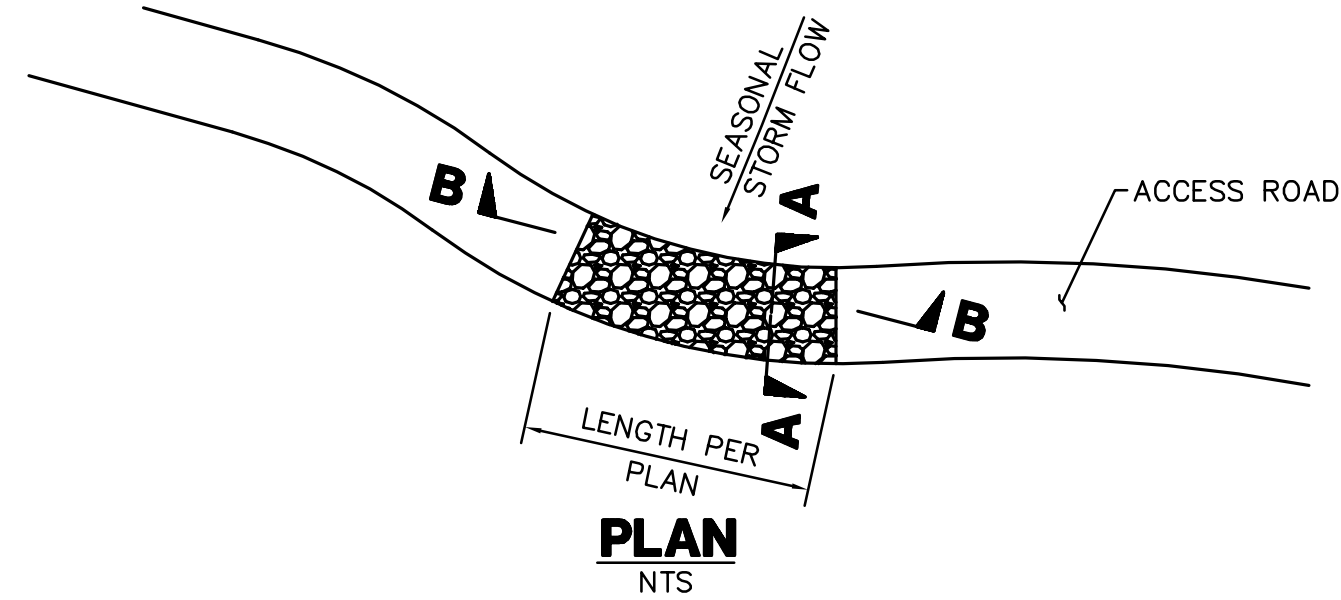
SPL-08B-003



Bureau Veritas North America  
11590 West Bernardo Court Suite 100  
San Diego, CA 92127-1624  
Tel: (858) 451-6100 Fax: (858) 451-2846  
www.us.bureauveritas.com

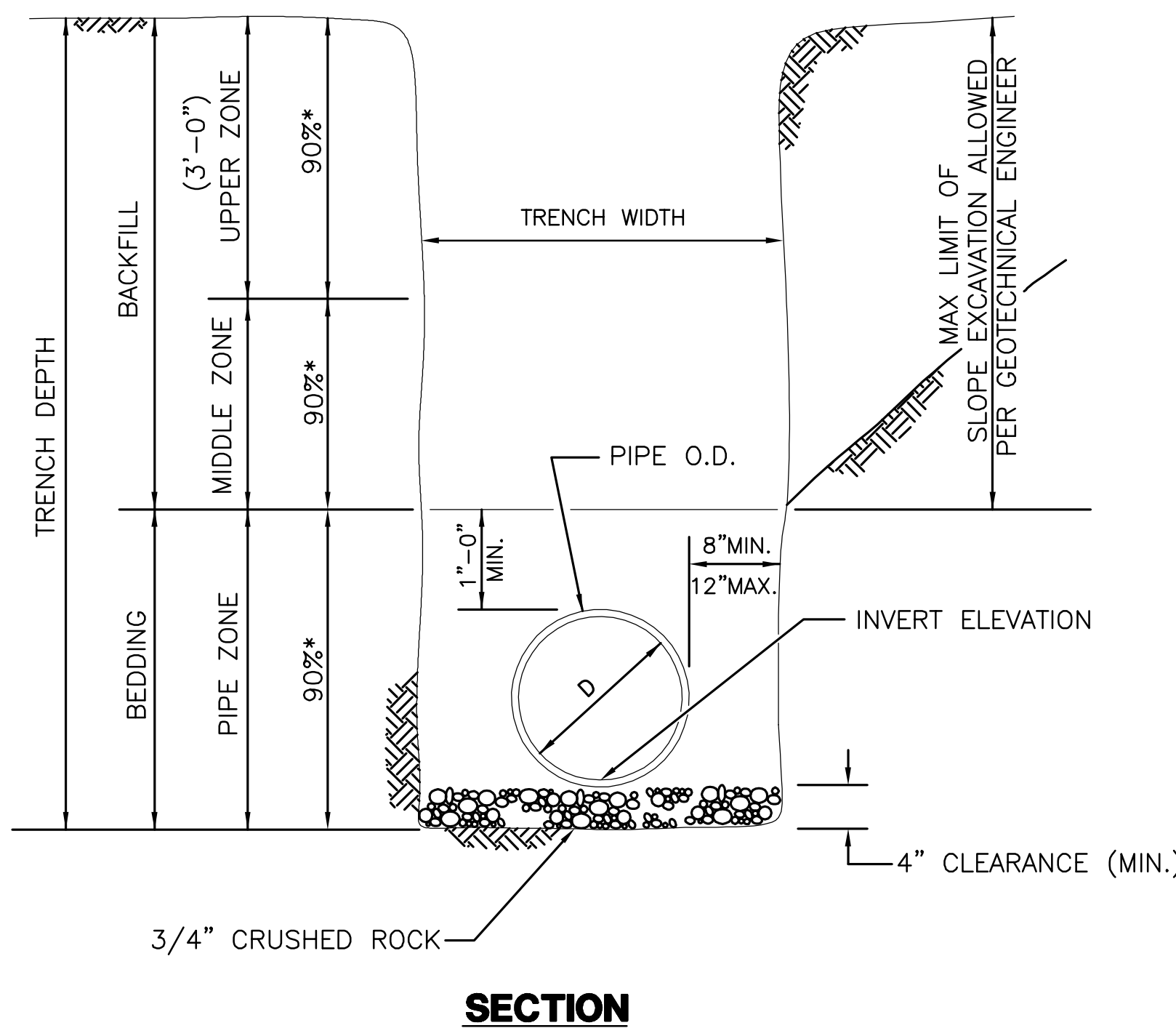


P:\161919 SDG&E SPL\CADD\08B\dwg\plan\08B-DETAIL 1.DWG 10/21/2010 12:51



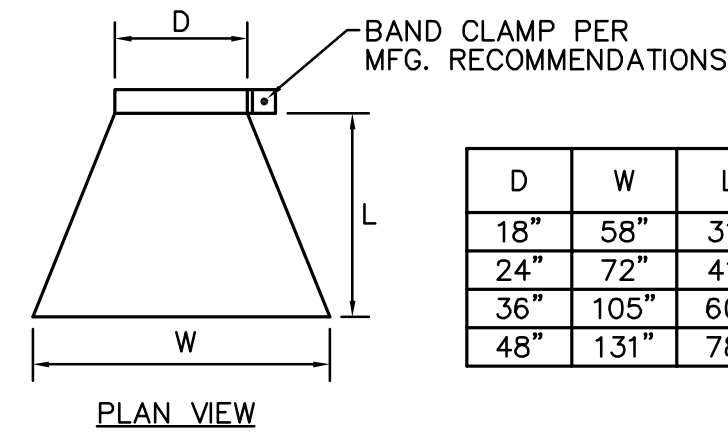
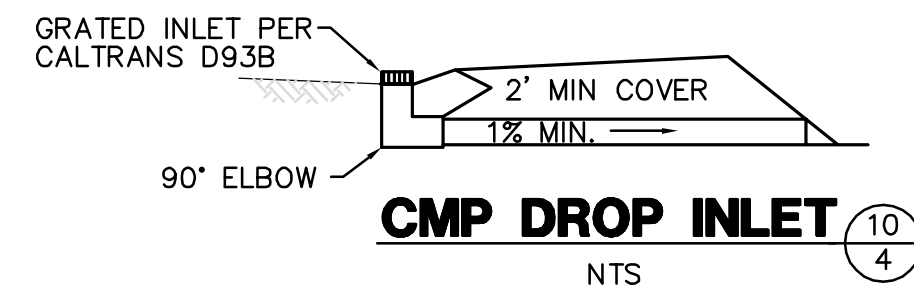
1. THE MAXIMUM WATER DEPTH, BASED ON A 10 YEAR FREQUENCY STORM, SHALL BE 10". THE DEPTH (D) IN FEET MULTIPLIED BY THE VELOCITY (V) IN FEET PER SECOND SHALL BE EQUAL TO SIX OR LESS. (DXV=6)
2. EXCAVATION AND DISPOSAL OF EXISTING MATERIALS IS TO BE INCLUDED IN CONSTRUCTION OF THE DIP SECTION.

**DIP SECTION** 4/4

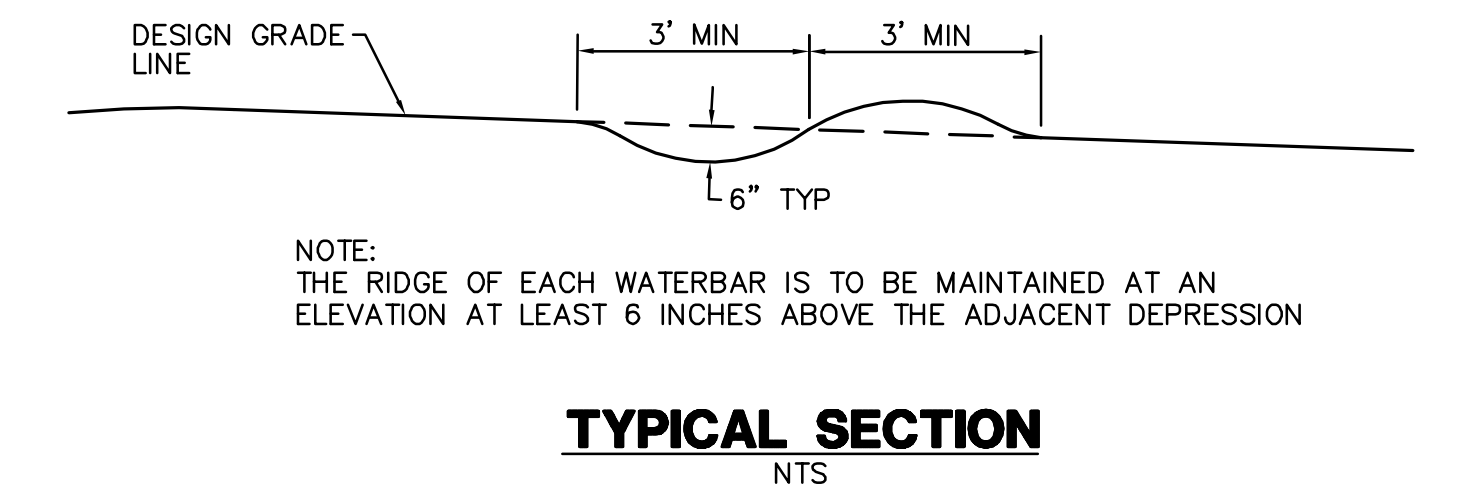
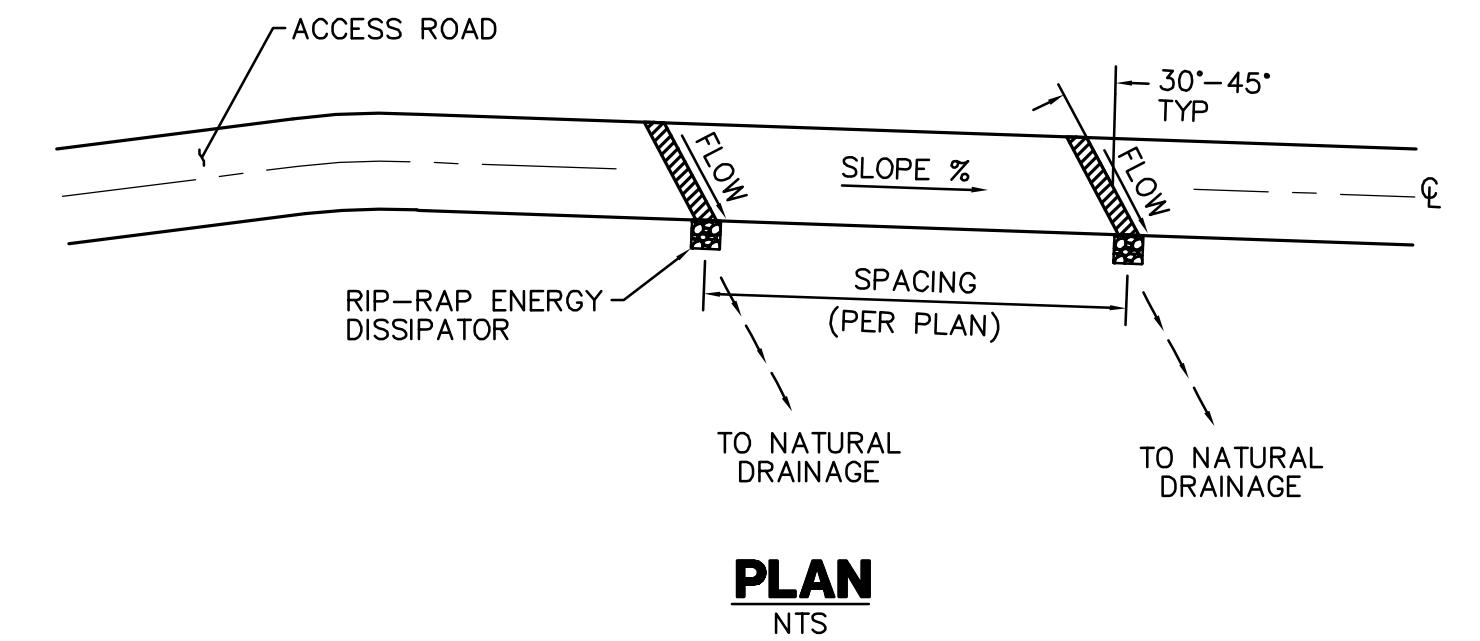
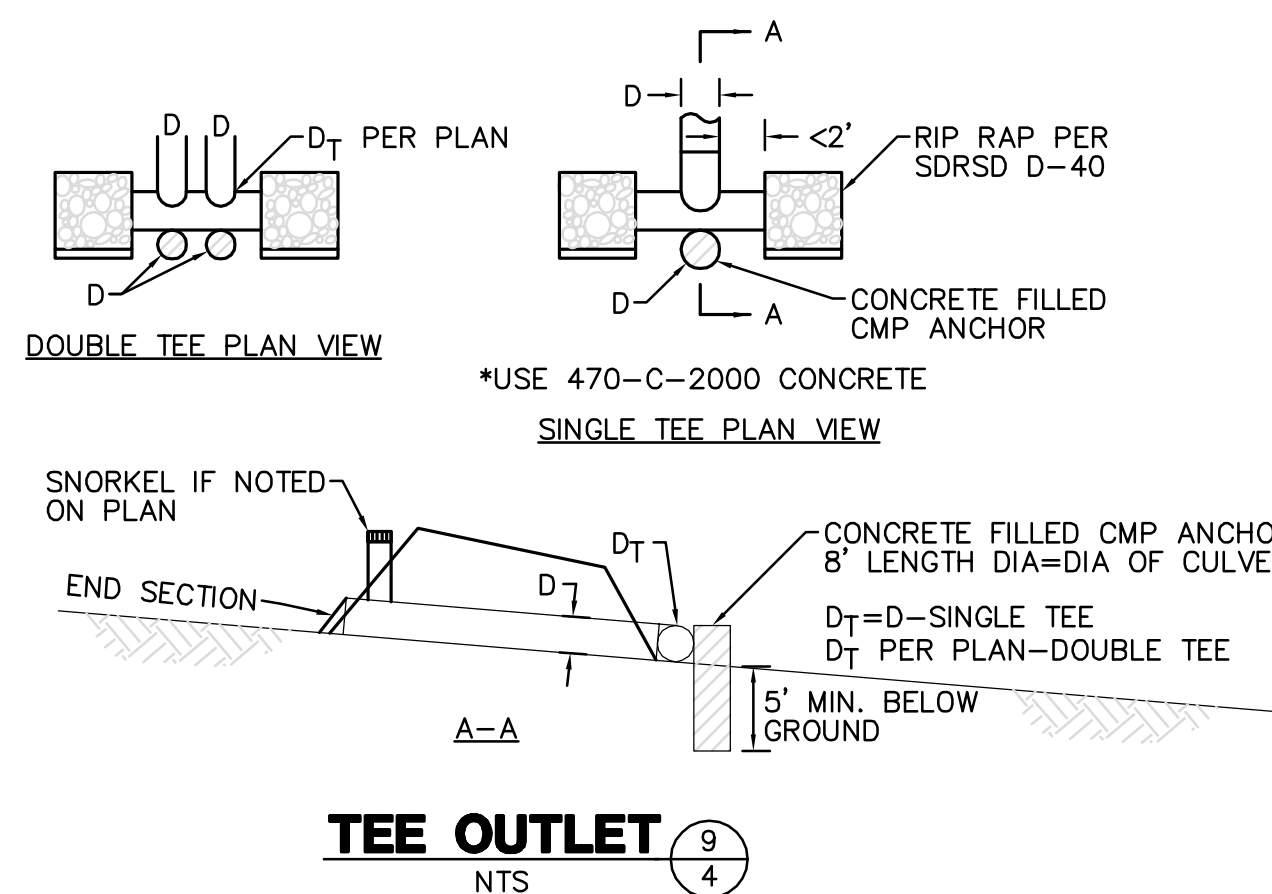
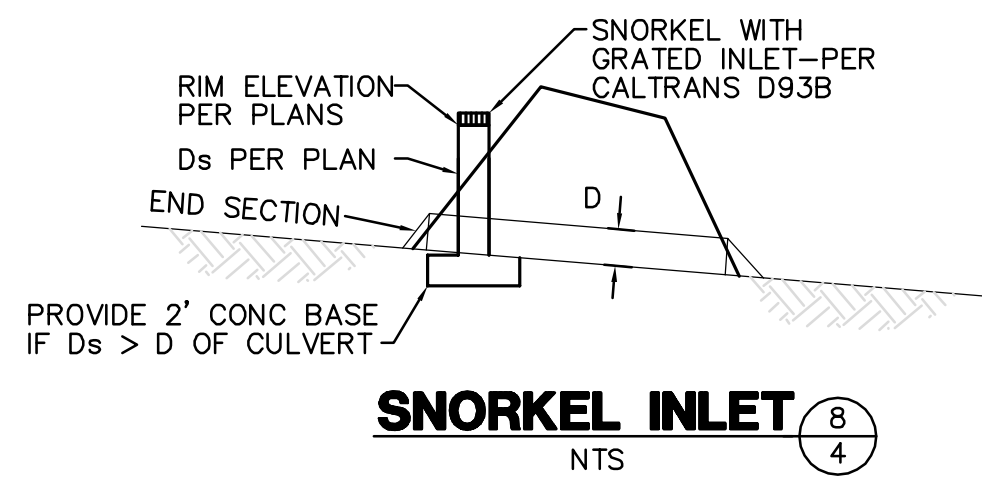


\* INDICATE MINIMUM RELATIVE COMPACTION

**PIPE BEDDING AND TRENCH BACKFILL FOR STORM DRAINS** 6/4

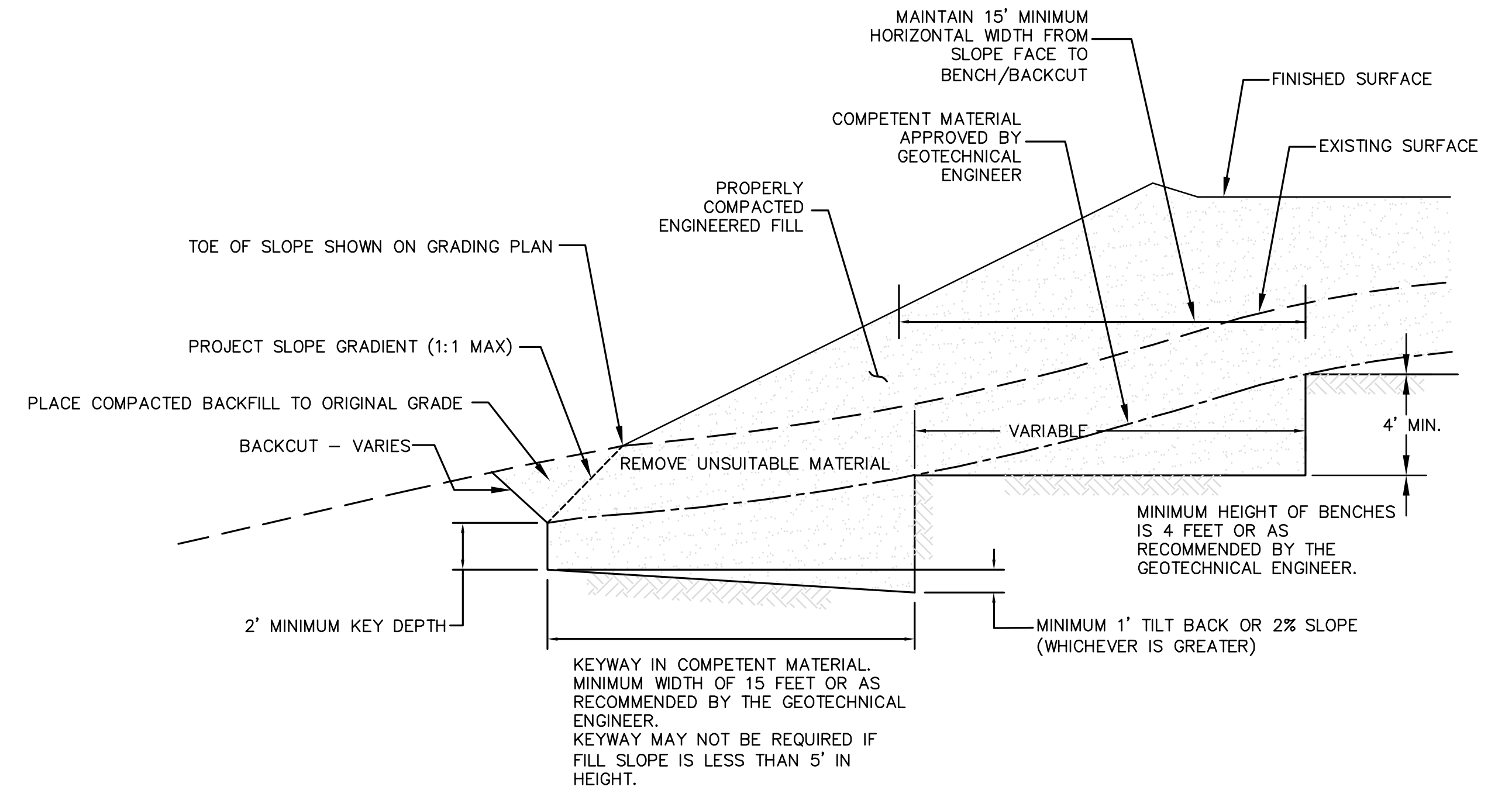


**CULVERT END SECTION INLET AND/OR OUTLET**  
NTS



NOTE: THE RIDGE OF EACH WATERBAR IS TO BE MAINTAINED AT AN ELEVATION AT LEAST 6 INCHES ABOVE THE ADJACENT DEPRESSION

**WATER BAR** 5/4



NOTES:  
BENCHING SHALL BE REQUIRED WHEN NATURAL SLOPES ARE EQUAL TO OR STEEPER THAN 5:1 OR WHEN RECOMMENDED BY THE GEOTECHNICAL ENGINEER.

WHERE THE NATURAL SLOPE APPROACHES OR EXCEEDS THE DESIGN SLOPE RATIO, SPECIAL RECOMMENDATIONS WILL BE PROVIDED BY THE GEOTECHNICAL ENGINEER

**REVISIONS**

NO.	WORK DONE	DATE	BY:	APP'D:	NO.	WORK DONE	DATE	BY:	APP'D:	NO.	WORK DONE	DATE	BY:	APP'D:	NO.

SAN DIEGO GAS & ELECTRIC COMPANY  
SAN DIEGO, CALIFORNIA

SPL-08B (LINK 2)  
DETAIL SHEET 2 OF 2

DRAWN BY:	DATE:	SCALE: NONE	W.O.:	REV.:
CHECKED BY:	DATE:			
APPROVED BY:	DATE:			
CAD NO.:	PLOT SCALE: 1 = 1			

SPL-08B-004

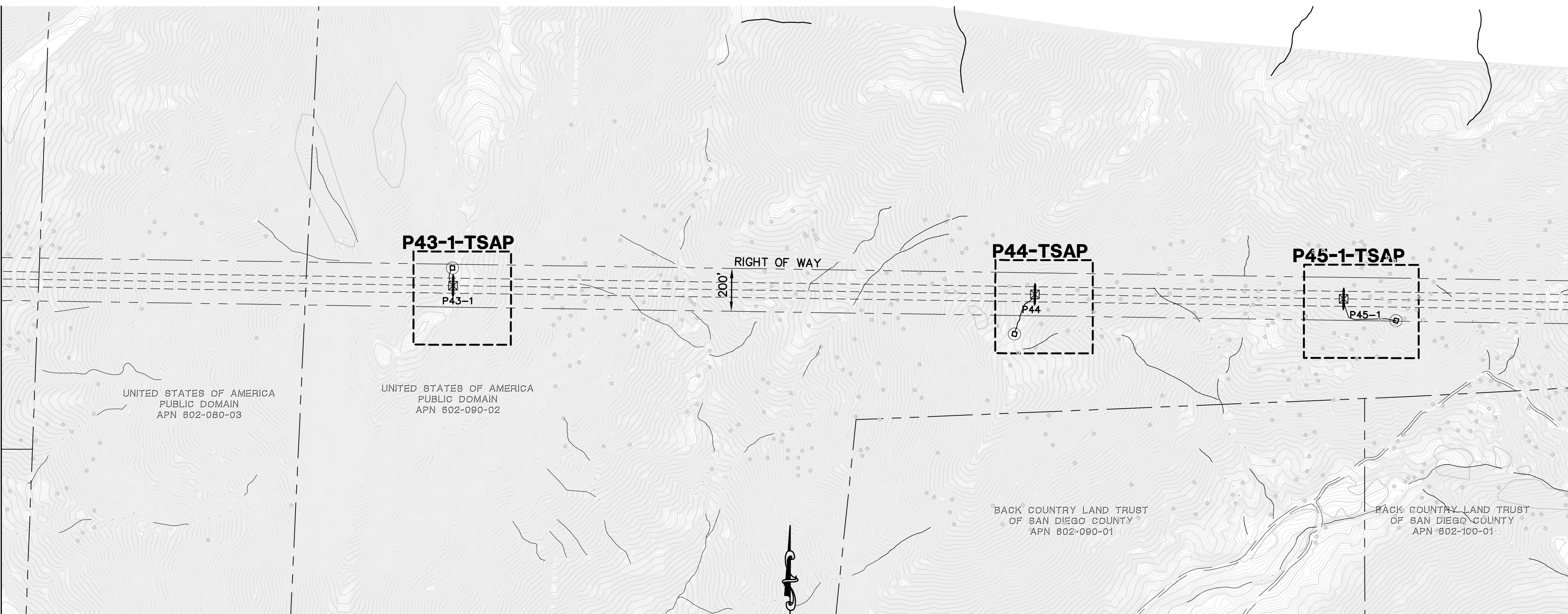
P:\16191 SDG&E SPL\CADD\08B\dwg\plan\08B-DETAIL 2.dwg\lmsy-21-20101252



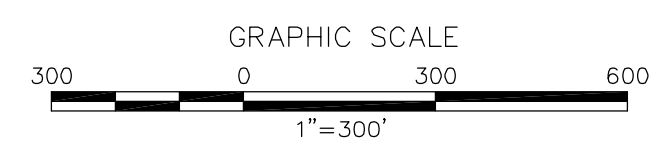
Bureau Veritas North America  
11590 West Bernardo Court Suite 100  
San Diego, CA 92127-1624  
Tel: (858) 451-6100 Fax: (858) 451-2846  
www.us.bureauveritas.com



MATCH LINE SEE SECTION 8A PLANS, BEGIN SECTION 8B

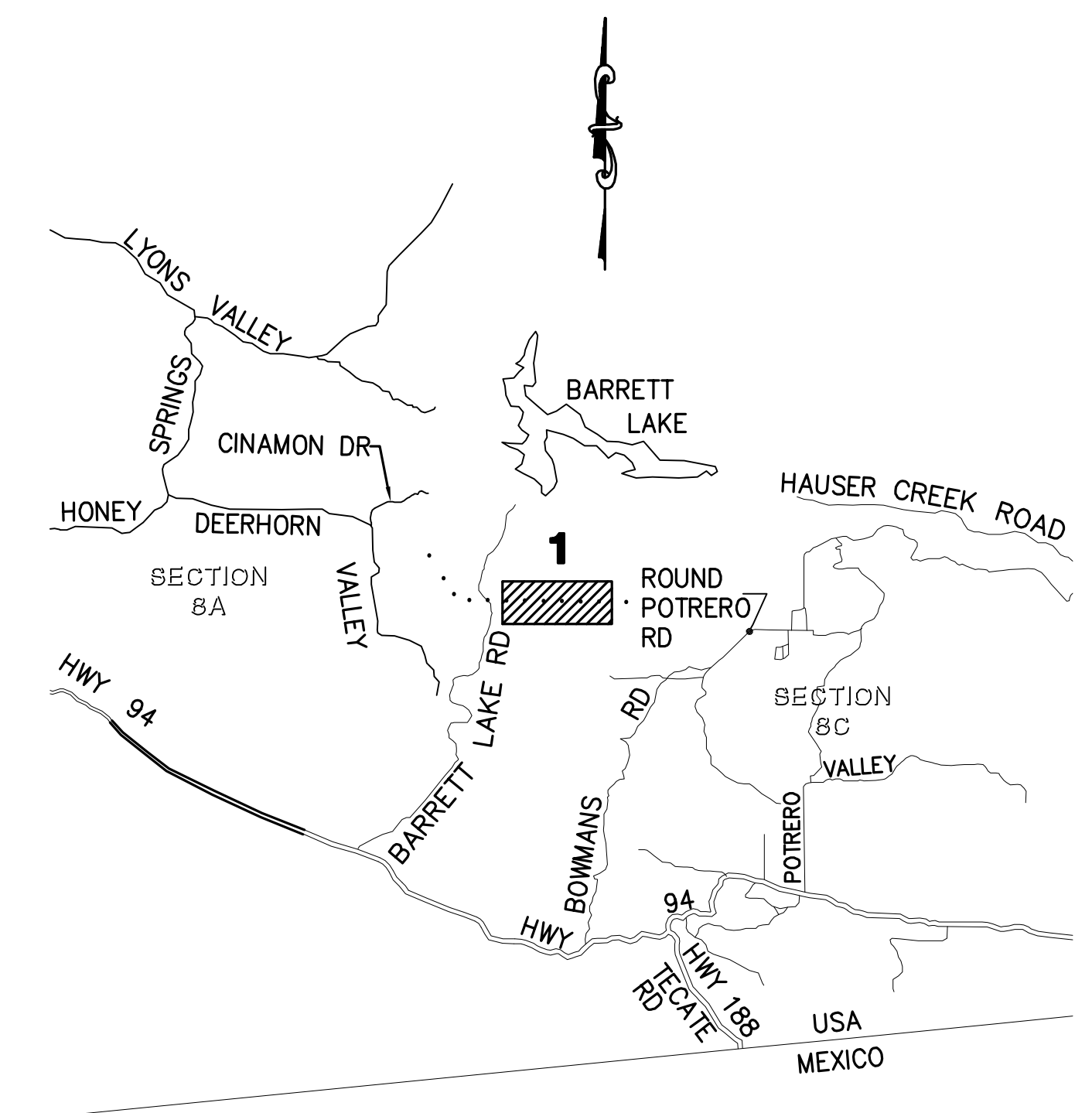


MATCH LINE END SECTION 8B  
SEE SECTION 8C PLANS



**LEGEND**

- P218-1-S1**  
AREA OF ENLARGED PLAN WITH SHEET NAME REFERENCE (ACTUAL SHEET NAMES INCLUDE THE SECTION # AS A PREFIX)
- MINOR ROAD MAINTENANCE – SEE PLAN AND CONSTRUCTION NOTES HEREON
- MINOR ROAD IMPROVEMENTS – SEE PLAN AND CONSTRUCTION NOTES HEREON
- MAJOR ROAD IMPROVEMENTS – SEE SHEET AS INDICATED
- SITE IMPROVEMENTS – SEE SHEET AS INDICATED
- PULL SITE IMPROVEMENTS – SEE SHEET AS INDICATED
- CONSTRUCTION YARD IMPROVEMENTS – SEE CONSTRUCTION YARD PLANS
- PROPOSED TRANSMISSION LINES
- P218-1
- TSAP
- EXISTING 10' CONTOURS
- EXISTING 2' CONTOURS



**SECTION 8B  
LOCATION MAP**

**REVISIONS**

NO.	WORK DONE	DATE	BY:	APP'D:	NO.	WORK DONE	DATE	BY:	APP'D:	NO.	WORK DONE	DATE	BY:	APP'D:	NO.

SAN DIEGO GAS & ELECTRIC COMPANY  
SAN DIEGO, CALIFORNIA

**SPL-8B (LINK 2)**

KEY MAP + MINOR ACCESS ROAD IMPROVEMENTS

DRAWN BY: LJ	DATE:	SCALE: 1"=300'	W.O.:	REV. 0
CHECKED BY:	DATE:			
APPROVED BY:	DATE:			
CAD NO.:	PLOT SCALE: 1" = 1'			

08B-P43-1-P45-1-KEY01

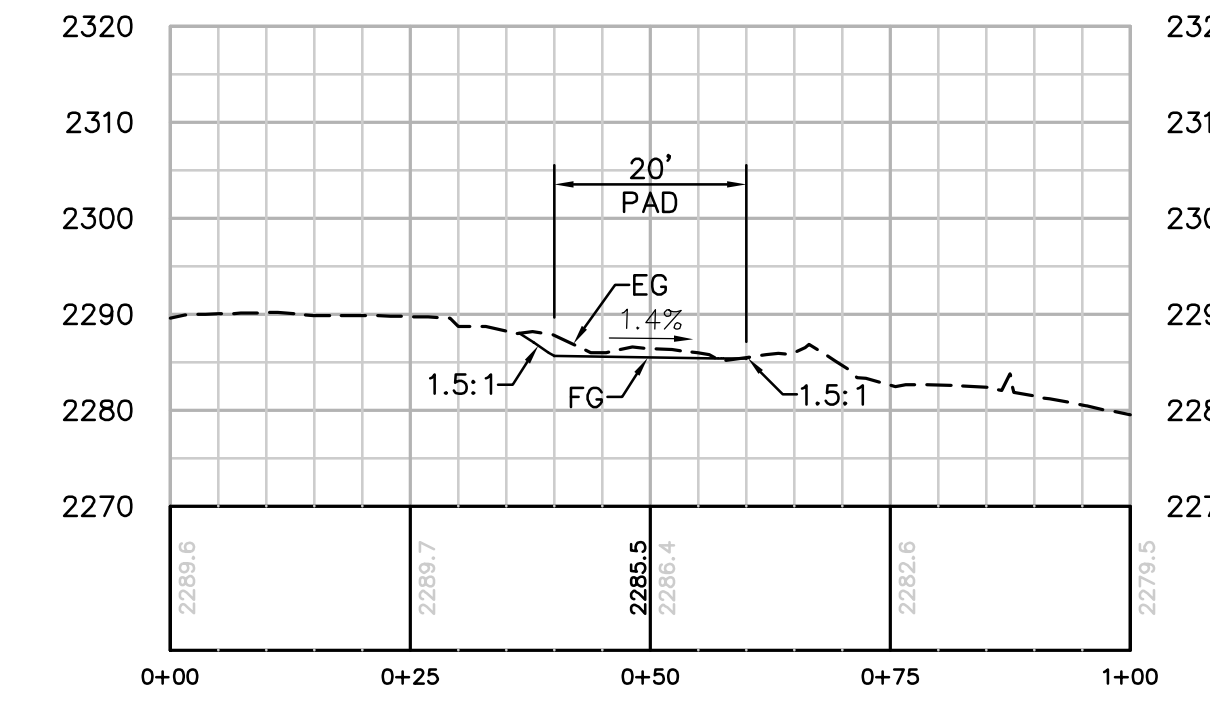
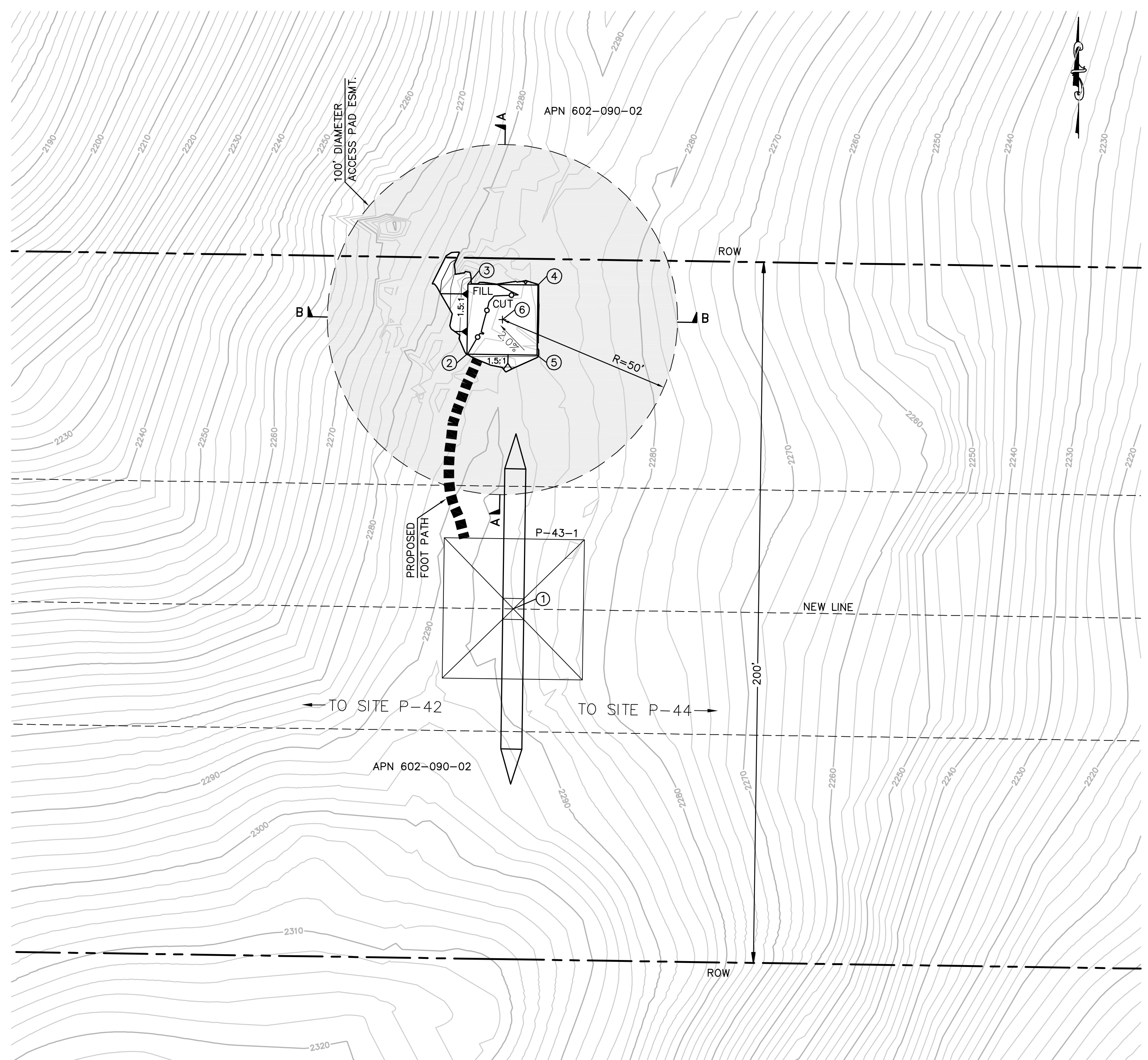


**Bureau Veritas North America**  
11590 West Bernardo Court Suite 100  
San Diego, CA 92127-1624  
Tel: (858) 451-6100 Fax: (858) 451-2846  
www.us.bureauveritas.com

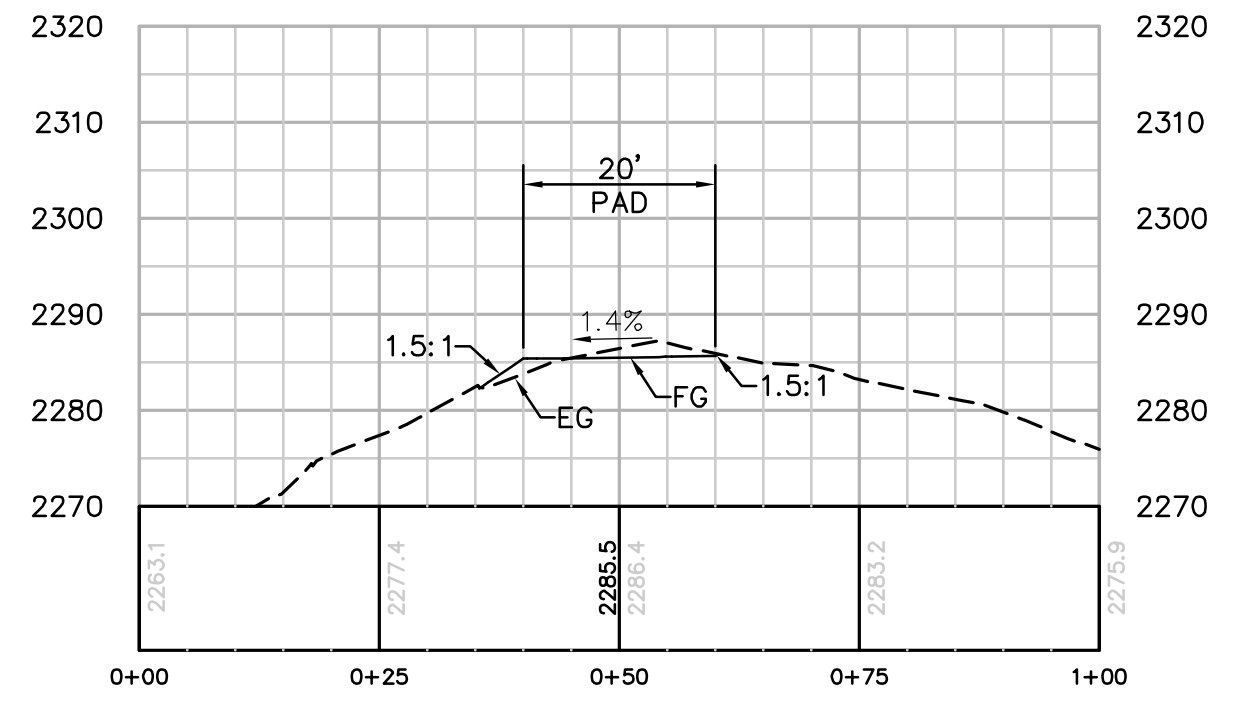


NUMBER	NORTHING	EASTING	ELEVATION	DESCRIPTION
1	1819984.04	6431600.69	(2287.75)	P-43-1
2	1820056.78	6431587.43	2285.48	FG
3	1820076.78	6431587.73	2285.20	FG
4	1820076.48	6431607.73	2285.48	FG
5	1820056.49	6431607.43	2285.76	FG
6	1820066.63	6431597.58		RP

STRUCTURE NUMBER	STRUCTURE TYPE	STRUCTURE LINE ANGLE	TOWER HEIGHT
P-43-1	500 KV EXHD Lattice Dead-end Tower	0.00	159.75



**SECTION A-A**  
HORIZ. & VERT. SCALE: 1"=20'



**SECTION B-B**  
HORIZ. & VERT. SCALE: 1"=20'

**EARTH QUANTITIES:** CUT: 10 CY, FILL: 7 CY, NET: 3 CY  
**DISTURBED AREA:** PAD: 615 SF, TOTAL: 615 SF

**TOWER STAGING/ACCESS PAD FOR TOWER P-43-1**  
**(THIS IS NOT A HELIPORT)**

SCALE: 1" = 20'

GRAPHIC SCALE: 0 20 40  
 1"=20'

PER ONSITE BIOLOGIST, MOW VEGETATION TO A HEIGHT OF 6 INCHES BUT NOT LESS THAN 4 INCHES AND REMOVE CUTTINGS FROM 100' DIAMETER EASEMENT. REMOVE WEEDS AND SPREAD NATIVE SEED MIX PER DIRECTION OF THE BIOLOGIST.

**REVISIONS**

NO.	WORK DONE	DATE	BY:	APP'D:	NO.	WORK DONE	DATE	BY:	APP'D:	NO.	WORK DONE	DATE	BY:	APP'D:

SAN DIEGO GAS & ELECTRIC COMPANY  
 SAN DIEGO, CALIFORNIA

**SPL-8B (LINK 2)**  
 TOWER STAGING/ACCESS PAD FOR SITE P-43-1

DRAWN BY: 00 DATE: SCALE: 1" = 20' W.O. REV. 0  
 CHECKED BY: DATE:  
 APPROVED BY: DATE:  
 CAD NO.: PLOT SCALE: 1 = 1

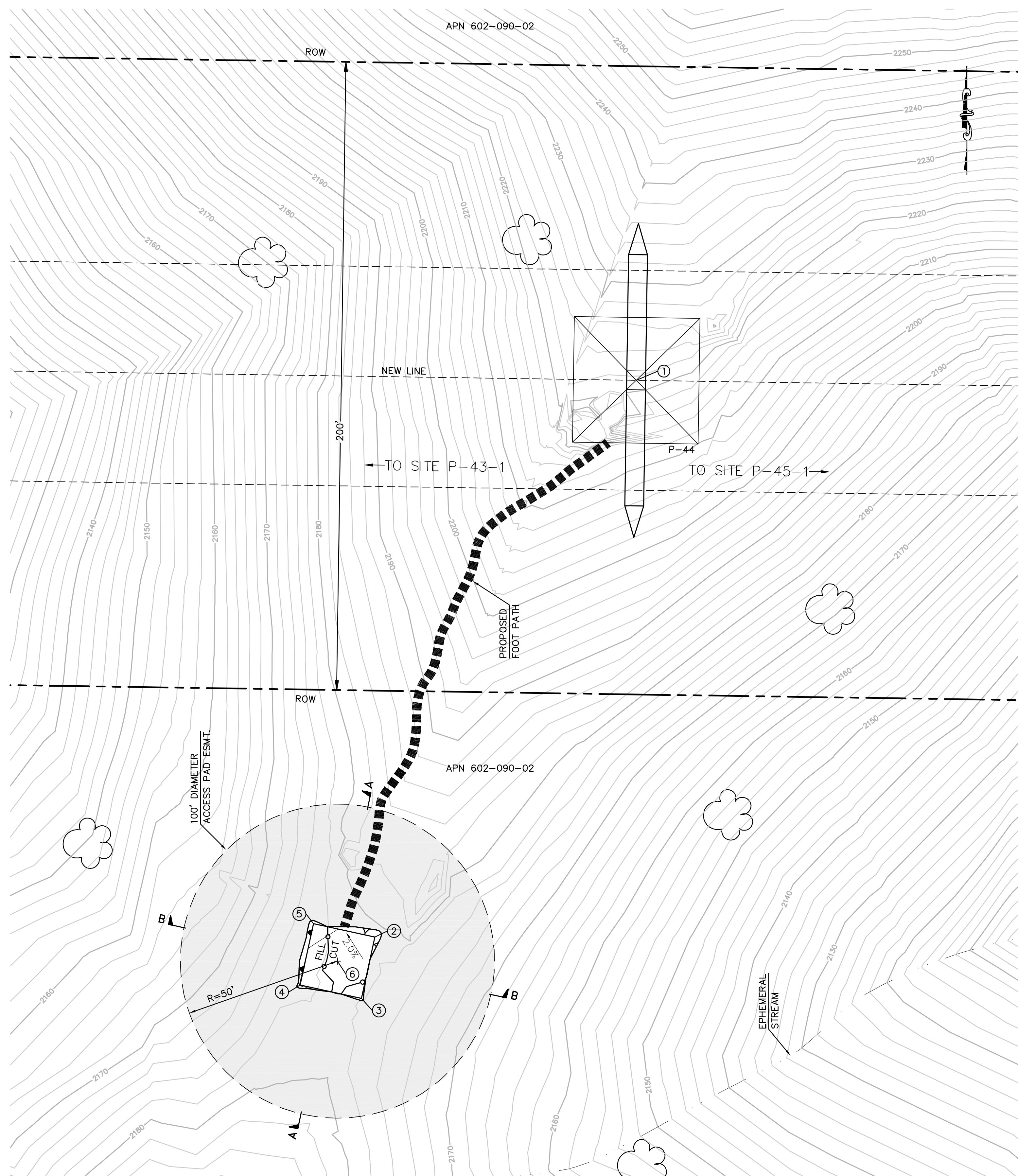
08B-P43-1-TSAP



**Bureau Veritas North America**  
 11590 West Bernardo Court Suite 100  
 San Diego, CA 92127-1624  
 Tel: (858) 451-6100 Fax: (858) 451-2846  
 www.us.bureauveritas.com

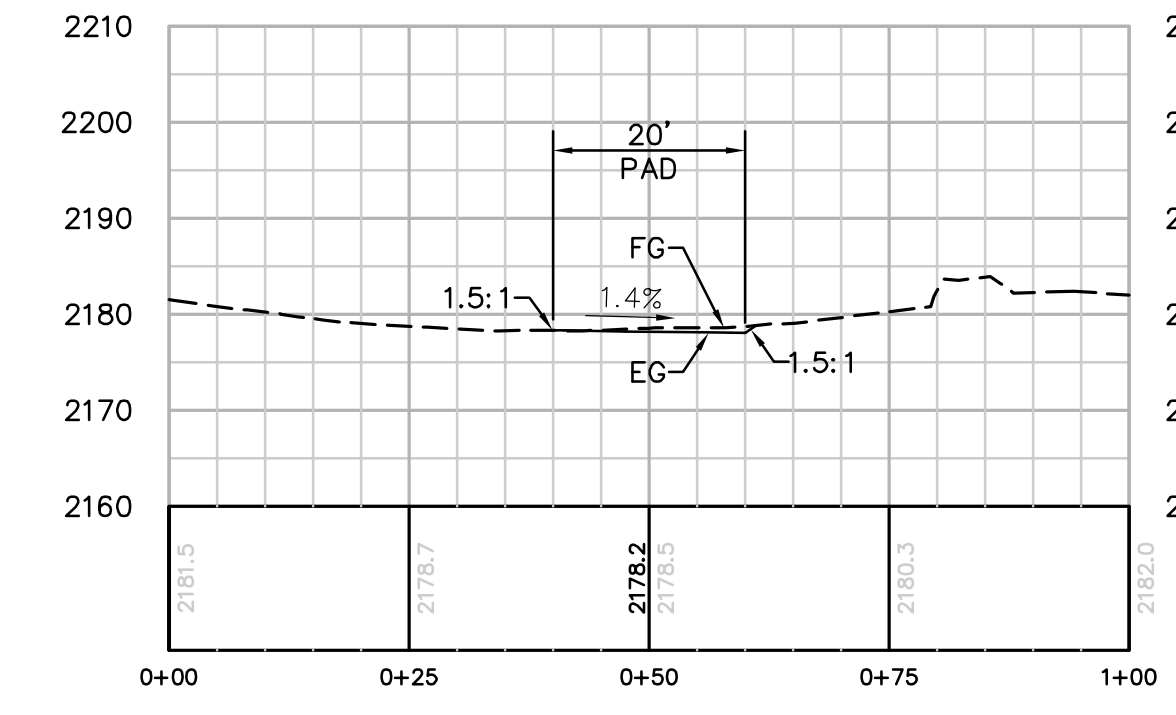


P:\161919 SDG&E SPL\CADD\08B.dwg\plan\Helipads\08B-P43-1 TSAP.dwg\mcy-21-2010\1257

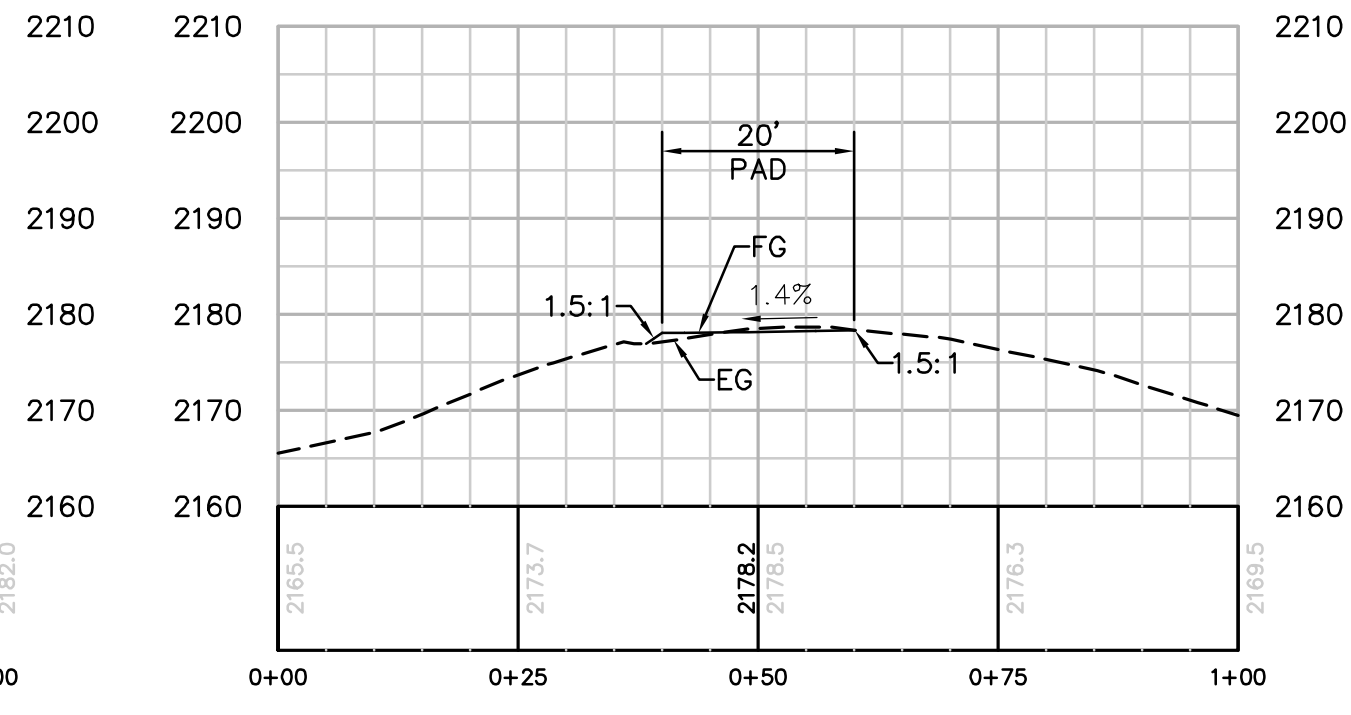


NUMBER	NORTHING	EASTING	ELEVATION	DESCRIPTION
1	1819943.85	6434308.37	(2221.67)	P-44
2	1819766.60	6434225.16	2178.17	FG
3	1819747.05	6434220.91	2178.45	FG
4	1819751.31	6434201.36	2178.17	FG
5	1819770.85	6434205.62	2177.89	FG
6	1819758.95	6434213.26		RP

STRUCTURE NUMBER	STRUCTURE TYPE	STRUCTURE LINE ANGLE	TOWER HEIGHT
P-44	500 KV EXHD Lattice Dead-end Tower	0.00	129.75



**SECTION A-A**  
HORIZ. & VERT. SCALE: 1"=20'

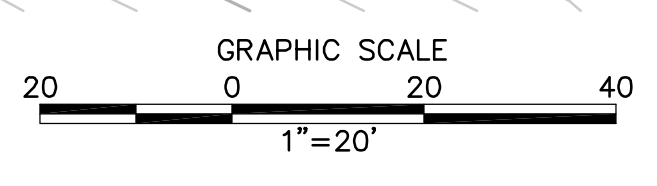


**SECTION B-B**  
HORIZ. & VERT. SCALE: 1"=20'

**EARTH QUANTITIES:**  
CUT: 4 CY  
FILL: 3 CY  
NET: 1 CY

**DISTURBED AREA:**  
PAD: 474 SF  
TOTAL: 474 SF

**TOWER STAGING/ACCESS PAD FOR TOWER P-44**  
**(THIS IS NOT A HELIPORT)**



PER ONSITE BIOLOGIST, MOW VEGETATION TO A HEIGHT OF 6 INCHES BUT NOT LESS THAN 4 INCHES AND REMOVE CUTTINGS FROM 100' DIAMETER EASEMENT. REMOVE WEEDS AND SPREAD NATIVE SEED MIX PER DIRECTION OF THE BIOLOGIST.

**REVISIONS**

NO.	WORK DONE	DATE	BY:	APP'D:	NO.	WORK DONE	DATE	BY:	APP'D:	NO.	WORK DONE	DATE	BY:	APP'D:

SAN DIEGO GAS & ELECTRIC COMPANY  
SAN DIEGO, CALIFORNIA

**SPL-8B (LINK 2)**  
TOWER STAGING/ACCESS PAD FOR SITE P-44

DRAWN BY: 00    DATE:    SCALE: 1" = 20' W.O.    REV. 0  
CHECKED BY:    DATE:     
APPROVED BY:    DATE:     
CAD NO.:    PLOT SCALE: 1 = 1

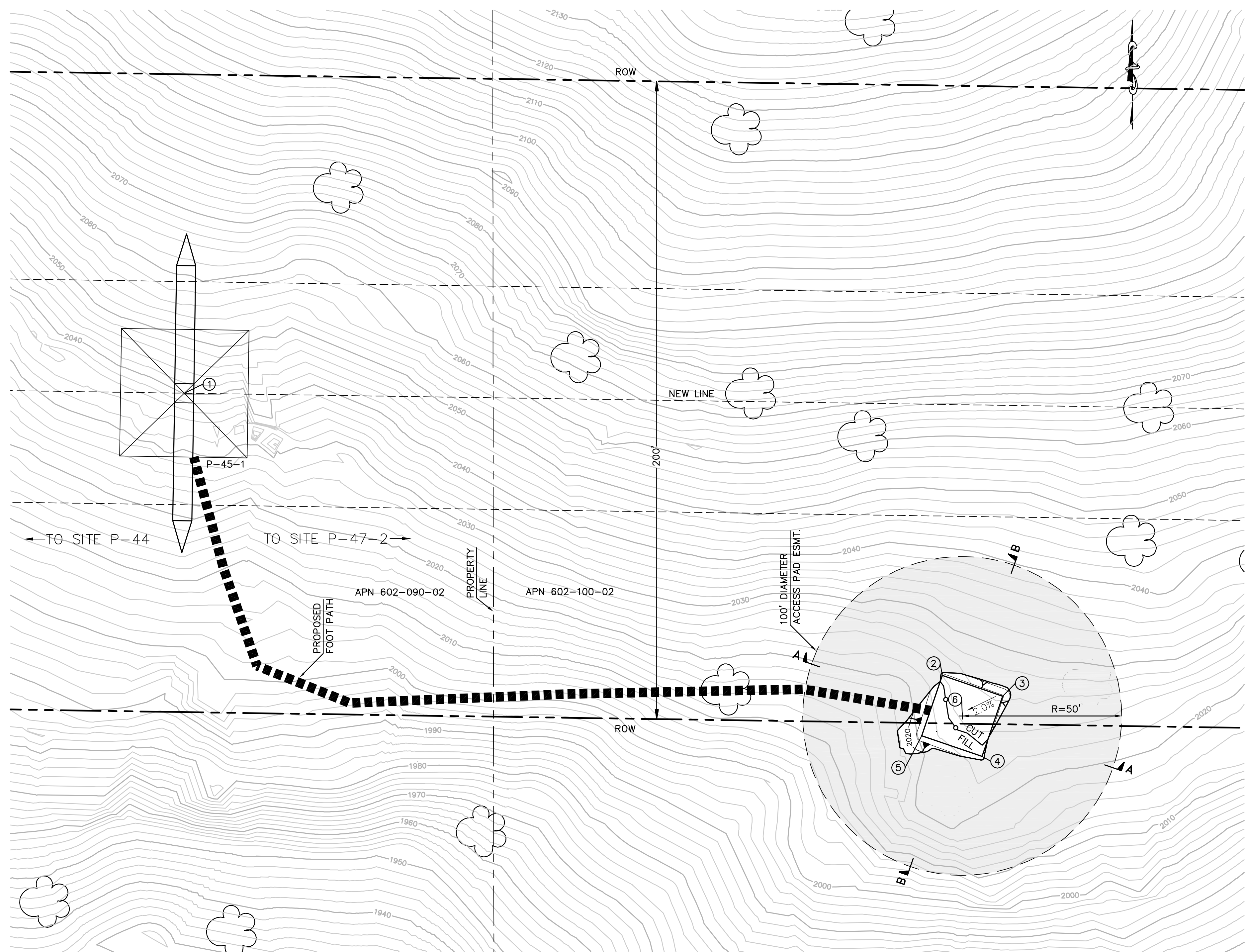
08B-P44-TSAP



**Bureau Veritas North America**  
11590 West Bernardo Court Suite 100  
San Diego, CA 92127-1624  
Tel: (858) 451-6100 Fax: (858) 451-2846  
www.us.bureauveritas.com

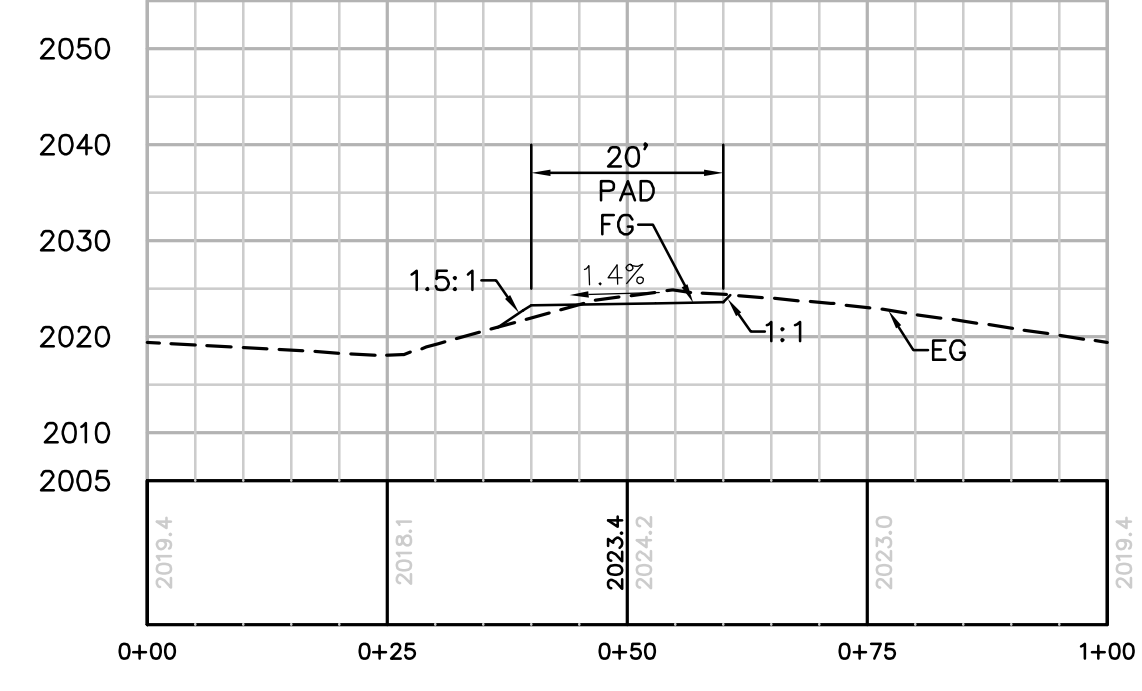


P:\161919 SD&E SPL\CADD\08B\plan\Helipads\08B-P44\_TSAP.dwg\May-21-2010\12:58

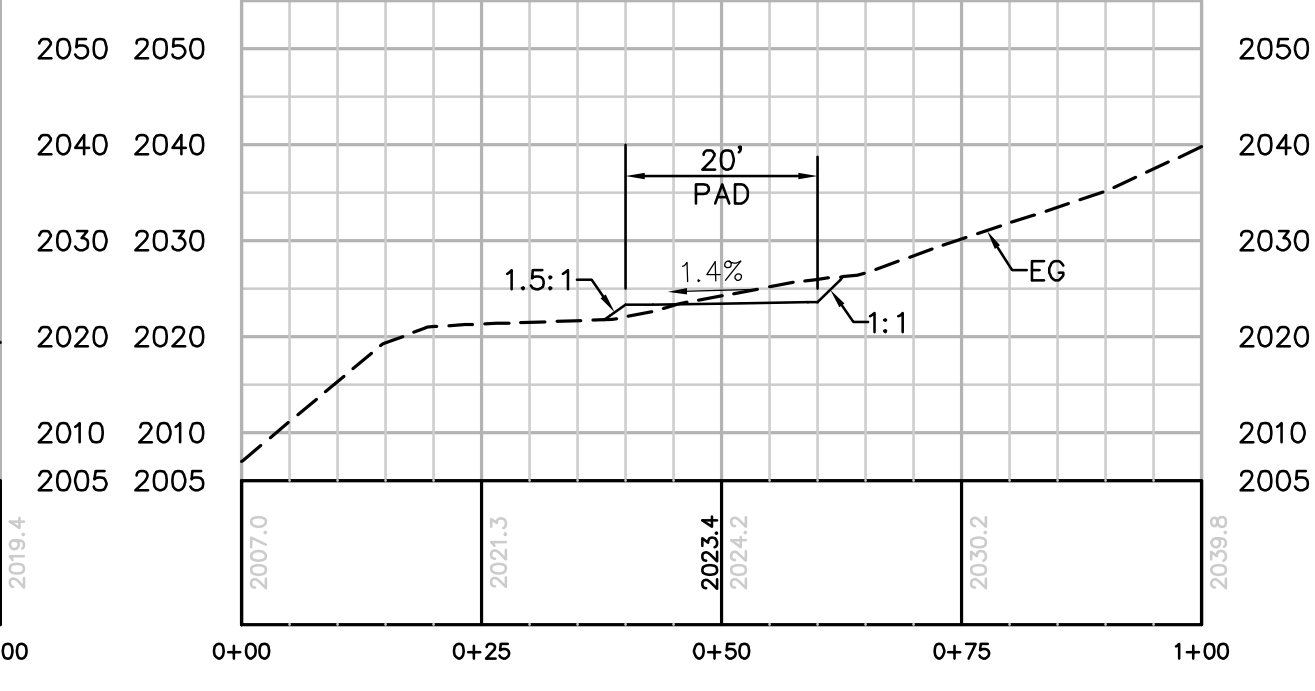


NUMBER	NORTHING	EASTING	ELEVATION	DESCRIPTION
1	1819922.52	6435745.20	(2040.18)	P-45-1
2	1819834.02	6435982.99	2023.43	FG
3	1819827.51	6436001.90	2023.71	FG
4	1819808.60	6435995.39	2023.43	FG
5	1819815.11	6435976.48	2023.15	FG
6	1819821.31	6435989.19	2023.43	RP

STRUCTURE NUMBER	STRUCTURE TYPE	STRUCTURE LINE ANGLE	TOWER HEIGHT
P-45-1	500 KV EXLD Lattice Dead-end Tower	0.00	156.75



**SECTION A-A**  
HORIZ. & VERT. SCALE: 1"=20'

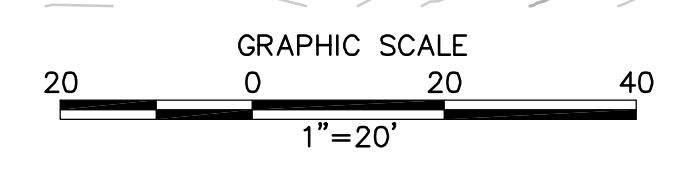


**SECTION B-B**  
HORIZ. & VERT. SCALE: 1"=20'

**EARTH QUANTITIES:**  
CUT: 14 CY  
FILL: 10 CY  
NET: 4 CY

**DISTURBED AREA:**  
PAD: 639 SF  
TOTAL: 639 SF

**TOWER STAGING/ACCESS PAD FOR TOWER P-45-1**  
**(THIS IS NOT A HELIPORT)**  
SCALE: 1" = 20'



PER ONSITE BIOLOGIST, MOW VEGETATION TO A HEIGHT OF 6 INCHES BUT NOT LESS THAN 4 INCHES AND REMOVE CUTTINGS FROM 100' DIAMETER EASEMENT. REMOVE WEEDS AND SPREAD NATIVE SEED MIX PER DIRECTION OF THE BIOLOGIST.

**REVISIONS**

NO.	WORK DONE	DATE	BY:	APP'D:	NO.	WORK DONE	DATE	BY:	APP'D:	NO.	WORK DONE	DATE	BY:	APP'D:	NO.

SAN DIEGO GAS & ELECTRIC COMPANY  
SAN DIEGO, CALIFORNIA

**SPL-8B (LINK 2)**  
TOWER STAGING/ACCESS PAD FOR SITE P-45-1

DRAWN BY: 00    DATE:    SCALE: 1" = 20'    W.O.    REV. 0  
CHECKED BY:    DATE:     
APPROVED BY:    DATE:     
CAD NO:    PLOT SCALE: 1 = 1

08B-P45-1-TSAP

**Bureau Veritas North America**  
11590 West Bernardo Court Suite 100  
San Diego, CA 92127-1624  
Tel: (858) 451-6100 Fax: (858) 451-2846  
www.us.bureauveritas.com



P:\161919 SDG&E SPL\CADD\08B.dwg\plan\Helipads\08B-P45-1 TSAP.dwg\mcy-21-2010\1257