

This report provides a summary of environmental monitoring and compliance activities conducted by Burns and McDonnell (BMcD) staff and BMcD subconsultants for the San Diego Gas & Electric (SDG&E) Sunrise Powerlink Project during the above weekly time period.

### **Training**

- SWEAP training continued for new Project personnel every Tuesday and Thursday. Additional trainings were provided as requested.
- Flat-tailed horned lizard (FTHL) trainings were provided to any new crew members or monitors prior to construction per mitigation measure B-7b and in accordance with the FTHL Rangewide Management Strategy. During morning tailboard meetings, guidelines were provided about recognizing, protecting, and notification requirements for FTHL. FTHL information cards were made available to any crew members or monitors as needed.
- Barefoot banded gecko trainings were provided to crews prior to pre-construction activities per the California Department of Fish and Game (CDFG) 2081 Incidental Take Permit.

### **Pre/Post Construction**

- Staked, flagged, and refreshed work areas at EP96, EP140, and EP173 pull site and access road.
- Footing QA/QC at EP32-1, EP39-2, EP53-1, EP54-1, EP95, EP97, EP98-1, EP127, EP103A, EP119-2, and EP138-2.
- Evacuation route staking at EP120-4, EP120A, EP121-3, EP121A-1, EP122-1, EP123-1, EP124, EP128, and EP129.
- Post construction impact surveys at EP243, EP244, EP257, EP291-1/EP292-1 pull site, EP292-1, EP293, EP294, EP295, EP296, EP297, EP298, EP299, EP300-1, EP302-1, EP303-2, EP304-2, EP306-1/EP307-1 pull site, EP308, and EP309.
- The ESA Team conducted the following activities during this reporting period:
  - Repaired, refreshed, and maintained the previously installed project signs and ESAs at EP98-1, EP105-2, EP112-3 to EP119-2, EP120A to EP123-1, EP128, EP132-2, EP142-1, EP143-1, along McCain Valley Road from EP173 to EP205, 205-2-E access road, EP247 to EP255-2, and EP269-1-PS-E.
  - Installed project signs from EP179-N access road to EP184-N access road.

### **Construction**

- Monitors were present during construction activities to ensure compliance with mitigation measures as identified in the Final EIR/EIS Mitigation Monitoring, Compliance, and Reporting Program. Archaeologists, Paleontologists, and Native American Monitors were present at sites where required as identified prior to construction activity and as approved in the NTPs. On average, the following number of monitors were on the Project throughout the week:
  - 10 Archaeological Monitors.
  - 123 Biological Monitors.
  - 10 Native American Monitors
  - 2 Paleontological Monitors.
  - 8 SWPPP Monitors.

- Project staff carpooled to site reviews, kick-off tailgates, and off-site meetings. Construction and traffic control crews were observed carpooling from yards to work areas.
- Deterrents were utilized to discourage bird nest building activities throughout the Project. Deterrents are determined depending upon the location and type of possible nesting areas and may include metallic flagging, compact discs, plastic owls, and the presence of biological monitors. The table below demonstrates the construction progress to date:

<b>OVERHEAD</b>			
<b>Agency</b>	<b>Foundations Completed</b>	<b>Towers Erected</b>	<b>Wire Installed</b>
Non-Federal	75 of 169	36 of 169	7 of 169 EP295 and EP296
Bureau of Land Management	90 of 179	61 of 179	45 of 179 EP291-1 to EP294 EP297 to EP301
Miramar	1 of 12	1 of 12	0 of 12
US Forest Service	0 of 76	0 of 76	0 of 76
<b>UNDERGROUND</b>			
<b>Agency</b>	<b>Vaults Installed</b>	<b>Trenches Excavated &amp; Backfilled</b>	
Non-Federal	40 of 40	34 of 42	
<b>SUBSTATION UPGRADES</b>			
2 of 7 Completed			
<b>SUNCREST SUBSTATION</b>			
63 Percent Complete			

Overhead Construction

- Link 1
  - Vegetation clearing at EP179, EP180, EP183, EP187-2-S pull site, and EP265.
  - Boulder removal at EP185-1, EP197-3, EP198-3, EP207, and EP254.
  - Access road construction from:
    - EP187-1-E to McCain Valley Yard, EP179-N, EP180-N, EP184-1-N, EP184-1-N, and EP185-1-N.
  - Grading at EP173-1-N, EP183, EP184-1, EP185-1, and EP187-2-N pull site.
  - Driveway installation at EP247-E and EP250-E.

- Micropile drilling at EP259-3, EP261-2, EP261A, EP263A-2, EP264-4, EP266-2, EP267-2, EP270-2, EP271-2, EP275-1, and EP281.
- Grouting at EP271-2, EP275-1, and EP281.
- Proof testing at EP271-2, EP277-1, and EP278-1.
- Micropile cap work at EP305-3, EP310, EP311-1, and EP312.
- Air track drilling at EP199-3, EP202-3, and EP207.
- Conventional drilling at EP178, EP190-2, EP197-3, EP203-3, EP207, and EP250.
- Various foundation work (capping, cage installation, grounding, etc.) at EP178, EP200A-1, EP203-3, and EP250.
- Concrete pouring at EP178, EP200-3, EP203-3, EP204-3, EP245-1, EP247, and EP250.
- Form removal and cleanup at EP204-3.
- Tower assembly at EP200A-1, EP200-3, EP201-3, EP205-2, EP206-1, EP240, EP242, EP255-2, EP256, EP290, EP303-2, EP304-2, EP306-1, EP307-1, EP312, EP314, EP315-1, and EP317.
- QA/QC at EP205-2, EP303-2, EP306-1, and EP307-1.
- Ground rod installation at EP314 and EP317.
- Optical Ground Wire (OPGW) sock line flown from EP355 to EP363-1.
- Conductor was clipped in from EP359 to EP360.
- Traveler work at EP301 and from EP355 to EP363-1.
- Travelers removed from EP296 to EP298.
- Sagging and clipping in from EP291 to EP301 and EP355 to EP363-1.
- Spacers installed from EP291-1 to EP300-1.
- Insulator and dead end work at EP291-1 and EP301.
- Marker balls installed between EP295 and EP296 and between EP299 and EP300-1.
- Guard structure removal from Imperial Hwy. between EP295 and EP296 and the road between EP299 and EP300-1.
- Wire impact assessment performed between EP291-1 and EP301.
- BMPs installed at:
  - EP174, EP187-1-S pull site, along McCain Valley Road from EP197-3-E to EP205-2-E, and EP245-1.
- Trained FTHL monitors, BBG monitors, BHS monitors, and Visible Emission Evaluators (VEEs) were onsite as required.
- BBG sweeps were conducted each day in BBG habitat
- On the access road between EP185 and EP186, the driver of a drill rig pulled to the side of the road to let traffic pass and pulled onto some vegetation. The driver is no longer working on the project.

Link 2

- During this reporting period, the PAL Levels were as follows: Monday-Ev, Tuesday-D, Wednesday-Ev, Thursday-Ev, Friday-Ev, and Saturday-Ev. Work activities ended each day in accordance with the fire plan and the approved Ev letter as appropriate.

USFS Land

- Access road construction at:
  - La Posta Road from beginning of pavement to EP141.
- Vegetation clearing at EP110-2 and TSAP and EP111-4 and TSAP.
- Various micropile work (capping, pile surveys, site benching, etc.) at EP132-2, EP135, EP137, and EP139-1.
- Test drilling at EP131.
- Gate installation at EP125, EP126-1, and EP131.
- BMP installation at/from:

- EP110-2 and TSAP, EP111-4 and TSAP, and La Posta Road from beginning of pavement to EP125.

#### BLM Land

- Access road construction at:
  - EP39-1-N-B and EP42-N.
- Vegetation clearing at EP56 and EP101-2 and TSAP.
- Boulder removal at EP42 pull site.
- Grading at EP42 pull site, EP101-2 and TSAP, and EP102A-1 and TSAP.
- Micropile drilling at EP43-1.
- Various micropile work (capping, pile surveys, site benching, etc.) at EP43-1, EP44, and EP47-2.
- Test drilling at EP42.
- Topsoil salvage at EP47 pull site.
- Grouting at EP43-1 and EP45-1.
- Install culvert at EP47-1-PS-N access road and EP50-E access road.
- BMP installation at:
  - EP39-1-N-B, EP56-4, and EP101-2 and TSAP.
- Hydromulching at EP42 pull site.

#### Non-Federal Land

- Vegetation clearing at EP82, EP83, EP87-1 and TSAP, and EP88-2 and TSAP.
- Grading at EP82.
- Conventional drilling at EP93.
- Concrete pouring at EP93.
- Various foundation work (capping, cage installation, grounding, etc.) at EP93.
- Rumble plate installed at 09A-RP01 at the entrance to La Posta Road.
- BMP  
installation at:
  - EP79, EP82,  
EP87-1 and TSAP, EP88-2, and EP91.

#### Link 5

- During this reporting period, the PAL Levels were as follows: Monday-Ev, Tuesday-D, Wednesday-Ev, Thursday-Ev, Friday-Ev, and Saturday-Ev. Work activities ended each day in accordance with the fire plan and the approved Ev letter as appropriate.

#### USFS Land

- Vegetation removal at CP99-2 and CP100-1.
- Access road construction at:
  - CP69-2, CP70-3, and CP99-2/CP100-1 access road.
- Grading at CP69-2.
- Dexpan boulder breaking at CP104-1.
- Conventional drilling at CP69-2, CP99-2, and CP100-1
- Various micropile work (capping, pile surveys, site benching, etc.) at CP103-2 and CP105-1.
- Micropile equipment demobilized/mobilized at CP103-2, CP104-1, and CP105-1.
- Tower QA/QC at CP103-1 and CP105-1.
- BMP installation from:

- CP99-2 to CP100-1.
- Hydromulching at CP99-2 and CP100-1.

#### BLM Land

- Micropile test pull at CP67-3 and CP68-1.
- Various micropile work (capping, pile surveys, site benching, etc.) at CP67-3.
- Grouting at CP65-1 and CP66-2.
- Test pull at CP66-2, CP67-3, and CP68-1.
- Tower assembly at CP68-1.
- Tower QA/QC at CP65-1, CP66-2, and CP67-3.

#### Non-Federal Land

- Vegetation removal at CP55/CP56-1 pull site, CP56-1-E-A access road, and CP98-1 access road.
- Tree trimming at CP70-3, CP71, CP73-3, and CP74-2.
- Grading at CP55/CP56-1 pull site.
- Access road construction at/from:
  - CP48-2 to CP49-1-PS-E, CP48-2 to CP49-1-PS-N, CP70-3, and CP98-1.
- Driveway construction occurred at CP31-2, CP55/CP56-1, and CP64-2/CP65-1 pull site.
- Boulder removal at CP47A-1.
- Micropile drilling at CP106 and CP109-1.
- Micropile test pull at CP71, CP74-2, and CP75-1.
- Various micropile work (capping, pile surveys, site benching, etc.) at CP71, CP72-2, CP73-2, and CP75-1.
- Micropile equipment demobilized/mobilized at CP107.
- Grouting at CP107 and CP108.
- Conventional drilling at CP98-1.
- Rumble plate 05-RP-04 at CP70-3 access road and 05-RP-05 at CP75-1 installed.
- Tower assembly at CP17-1, CP22-1, CP25-2, CP26, CP87-1, and CP88-1.
- Tower QA/QC at CP71, CP72-2, CP73-2, CP74-2, CP107, and CP108.
- Topsoil salvage at CP55/CP56-1 pullsite and CP56-1-E-A access road.
- BMP installation at:
  - CP48-2 to CP49-1-PS-E, CP50-1, CP98-1 access road, CP106-1, CP107, CP108, and CP109-1.
- Hydromulching at CP98-1 access road.

- 69kV
  - No work occurred during this reporting period.

#### Underground Construction (Link 4)

- Revitalization near South Grade Road.
- Trenching from V9R to V10R and Viejas Creek Bridge.
- Pre-drilling/Drilling at Viejas Creek Bridge.
- Pre-racking/Racking and cleaning manholes for ABB (and jointing/splicing) at V5L, V11L, V12L, V13L, V13R, V14R, and V15R.
- Proofing from V1R to V2R, V18L to V19L, and V19R to V20R.
- Cable pulling from V20L to riser poles and V20R to riser poles.
- Paving at Loritz Property, V9R to V10R, and near Viejas Creek Bridge.
- Grading at Slay Property.

- Forming at Viejas Creek Bridge.
- Working on the water line at Highway 8 Bore (CalTrans Bore).
- Installing riser poles at Slay Property.

#### Suncrest Substation Construction (Link 3)

- Rough grading on the substation pad and along Bell Bluff Truck Trail.
- Crushing rock for select fill material.
- Pier drilling for foundations.
- Forming pads for foundations and pouring concrete.
- Excavating vaults and trenching for underground utilities and placing Class 2 base along Bell Bluff Truck Trail.
- Steel erection in the northwest quadrant of the pad.
- Constructing the soil nail wall on the eastern slope.
- Pouring concrete panels for water tank.
- Trenching for conduit and ground grid in the northwest quadrant.
- Paving first portion of Bell Bluff Truck Trail.
- Placing rebar for water tank foundation.
- Hauling rock and soil from the northeast quadrant of the pad to the southeast quadrant.
- Spraying hydromulch and seed mixture adjacent to northern sediment basin.

#### Substation Upgrades

- Encina Switchyard
  - Chula Vista Electric performed wiring in panel boxes.
  - Roel continued trenching in the northwest portion of the substation.
  - SDG&E Construction and wiring crews worked on electric panels and potential transformers.
  - SDG&E wiring crews worked in and around control house.
- Imperial Valley (IV)
  - PRAVA Construction built out the new maintenance/storage building.
  - SDG&E ETRAM crew worked out of the northwest corner of the substation.
- San Luis Rey
  - SDG&E Kearny Mesa crew started 69kV bus upgrade work in Bay 4 north and south, wiring the new gas circuit breakers, and replacing disconnects and upgrading hardware on bus.
- Sycamore Canyon
  - SDG&E crew installed 230kV gas circuit breaker in Bay 21.
- Scripps
  - No Sunrise-related work

#### Construction Yards

- AER Yard – Helicopter operations and materials staging.
- Alpine Construction Yard – Materials staging and weed wash station.
- Bartlett-Hauser Yard – Water staging, helicopter operations, and weed wash station.
- Barrett Canyon Yard – Grading and boulder busting at yard and access road.
- Dunaway Yard – Site clean-up.

- Fromm Yard – Tower assembly, water staging, dumpster delivery, steel delivery, and steel staging.
- El Monte Yard – Crew and materials staging, helicopter operations, and fence repair.
- Helix Yard – Helicopter operations, tower assembly, concrete staging, weed wash station, and water staging.
- Imperial Valley Yard – No activity (yard essentially closed).
- Jacumba Valley Ranch (JVR) Yard – Helicopter operations, weed wash station, and water staging.
- Kreutzkamp Yard – Tower assembly, helicopter operations, weed wash station, and water staging.
- McCain Valley Yard – Tower assembly, helicopter operations, and water staging.
- Plaster City Yard – Helicopter operations, concrete operations, staging for wire stringing, and water staging.
- Rough Acres Yard – Helicopter operations, materials staging, tower assembly, water staging, and weed wash station.
- S2 Yard – Tower assembly, water staging, and helicopter operations.
- SWAT Yard – Tower assembly, weed wash station, water staging, and helicopter operations.
- Sycamore Yard – Tower assembly, material delivery, fencing repair, and weed wash station.
- Thing Valley Yard – None.
- Wilson Yard – Staging materials for Suncrest Substation, helicopter operations, water staging, and tower assembly.

### Wildlife Reporting

The following listed or Species of Special Concern were found dead in Project construction limits during this reporting period:

- California Legless Lizard (*Anniella pulchra*) – One (1) California legless lizard was found dead at EP184.
- San Diego Coast Horned Lizard (*Phrynosoma coronatum blainvillii*) – One (1) San Diego coast horned lizard was found dead at Thing Valley Yard.
- Flat-tailed Horned Lizard (*Phrynosoma mcallii*) – One (1) flat-tailed horned lizards was found dead near EP354.
- Coast Patch-nosed Snake (*Salvadora hexalepis virgulata*) – One (1) coast patch-nosed snake was found injured at the access road into Kreutzkamp Yard and later died.

The following listed or Species of Special Concern were relocated during construction activities this reporting period:

- Coronado Skink (*Plestiodon skiltonianus interparietalis*) – One (1) Coronado skink was relocated from the access road to EP101-2.
- San Diego Coast Horned Lizard (*Phrynosoma coronatum blainvillii*) – Three (3) San Diego coast horned lizards were relocated; two (2) from EP179 and one (1) from Thing Valley Yard.
- Western Spadefoot (*Spea hamondii*) – One (1) western spadefoot was relocated from EP47-2.

The following non-listed (not Species of Special Concern) were relocated during construction activities this reporting period:

- Kreutzkamp Yard – One (1) two-striped garter and one (1) long-nosed snake were relocated.
- SWAT Yard – One (1) gopher snake was relocated.



### Spills/Hazardous Waste

- On Wednesday, October 12, 2011, at 450 Peutz Valley Road, approximately 50 gallons of diesel fuel was released onto the soil immediately next to the street; only a small amount of diesel fuel (<1 gallon) reached the street. Phone notifications were made to the necessary agencies. Additionally, the SDG&E Executive Notification process was followed due to the volume of the spill. The release was caused when a dump truck driver exiting a driveway drove the truck off the curb and “bottomed-out” puncturing the tank. The SDG&E Contractor crew working the job used absorbent material to dam the released fuel prior to removal. Disposal of all materials was conducted per Federal and State regulations.
- On Friday, October 14, 2011, 2-4 ounces of diesel were released and immediately contained and cleaned up with the onsite spill kit at EP137. Notifications were made to the USFS.

### Customer Complaints

- On Tuesday, October 11, 2011, a complaint was filed with Public Affairs regarding numerous helicopters flights below 500 feet over her residence throughout the morning on October 10 and 11, 2011. Public Affairs notified Overhead and Aviation Managers; after review, it was determined that flight activities near the residence were taking place at approximately 700 feet above ground level. Public Affairs notified the individual of this information and apologized for the inconvenience.

### Non-Compliances

- No non-compliances were issued during this reporting period.

### Variances and TEWS

- No variiances or TEWS were approved during this reporting period.

### Weather

- No rain events occurred during this reporting period.
- BMPs were installed or maintained as needed throughout Project areas.

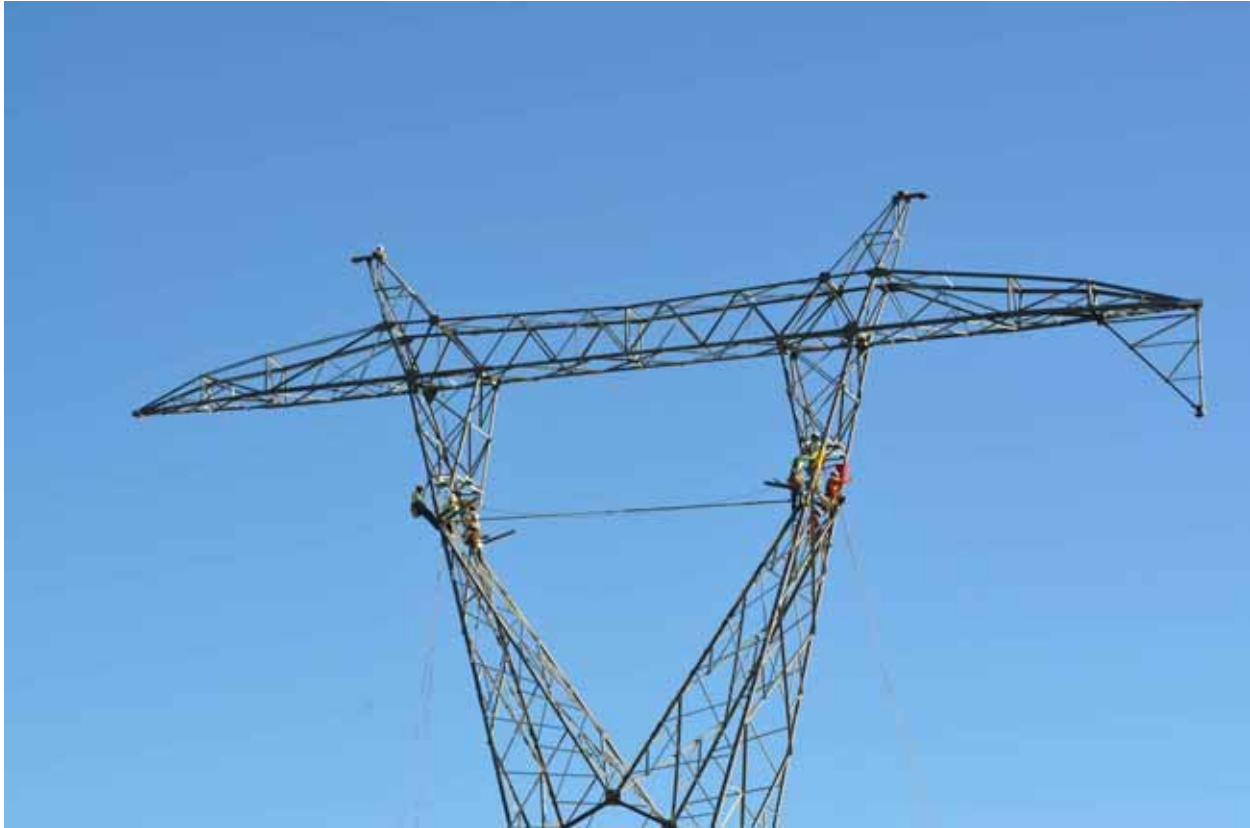




Relocating a coast horned lizard from EP179. *Photo courtesy of Jesse Ferber.*



Setting bridge at EP205. *Photo courtesy of Rebecca Carson.*



Bolting bridge at EP206. *Photo courtesy of Rebecca Carson.*

# **Appendices**

Peninsular Big Horn Sheep Monitoring Report

Flat-Tailed Horned Lizard Monitoring Report

Raven Control monitoring Report

**PBS Monitoring Report - Week Ending 10/15/2011**

Date	Location	Number observed	Comments
10/15/2011	Slay Property	0	Site clearance survey
10/15/2011	Slay Property	0	Monitoring construction activities
10/15/2011	EP306-EP312	0	Site clearance survey
10/15/2011	EP306-EP312	0	Afternoon perimeter survey
10/15/2011	EP305	0	Monitoring construction activities
10/15/2011	EP300-EP306	0	Site clearance survey
10/15/2011	EP300-EP306	0	Monitoring construction activities
10/15/2011	EP269-1 AND EP273-1	0	Monitoring construction activities
10/15/2011	EP269-EP281	0	Morning perimeter survey
10/15/2011	EP261-2	0	Monitoring construction activities
10/15/2011	EP274-EP278	0	Site clearance survey
10/15/2011	EP274-EP278	0	Monitoring construction activities
10/15/2011	EP263B-EP267	0	Site clearance survey
10/14/2011	Slay Property	0	Site clearance survey
10/14/2011	Slay Property	0	Monitoring construction activities
10/14/2011	EP310	0	Monitoring construction activities
10/14/2011	EP305	0	Monitoring construction activities
10/14/2011	EP300-EP306	0	Site clearance survey
10/14/2011	EP300-EP306	0	Monitoring construction activities
10/14/2011	EP291-EP301	0	Monitoring construction activities
10/14/2011	EP269 through EP281	0	Site clearance survey
10/14/2011	EP269-EP270	0	Site clearance survey
10/14/2011	EP263B-2	0	Monitoring construction activities
10/14/2011	EP256-EP263A	0	Site clearance survey
10/14/2011	EP256-EP263A	0	Monitoring construction activities
10/14/2011	EP274-EP278	0	Site clearance survey
10/14/2011	EP274-EP278	0	Monitoring construction activities
10/14/2011	EP269-EP273	0	Site clearance survey
10/14/2011	EP269-EP273	0	Monitoring construction activities
10/14/2011	EP263B-EP267	0	Site clearance survey
10/14/2011	EP256-EP263A, AER and FROMM CYs	0	Site clearance survey
10/14/2011	EP256-EP263A, AER and FROMM CYs	0	Monitoring construction activities
10/13/2011	Slay Property	0	Site clearance survey
10/13/2011	Slay Property	0	Monitoring construction activities
10/13/2011	EP310	0	Monitoring construction activities

**PBS Monitoring Report - Week Ending 10/15/2011**

Date	Location	Number observed	Comments
10/13/2011	EP306-EP312	0	Site clearance survey
10/13/2011	EP306-EP312	0	Afternoon perimeter survey
10/13/2011	EP293	0	Monitoring construction activities
10/13/2011	EP291-EP301	0	Monitoring construction activities
10/13/2011	EP275-1	0	Monitoring construction activities
10/13/2011	EP269-EP270	0	Site clearance survey
10/13/2011	EP269-EP281	0	Site clearance survey
10/13/2011	EP269-EP270	0	Site clearance survey
10/13/2011	EP266-2	0	Monitoring construction activities
10/13/2011	EP274-EP278	0	Site clearance survey
10/13/2011	EP274-EP278	0	Monitoring construction activities
10/13/2011	EP269-EP273	0	Site clearance survey
10/13/2011	EP269-EP273	0	Monitoring construction activities
10/13/2011	EP263B-EP267	0	Site clearance survey
10/13/2011	EP256-EP263A, AER and FROMM CYs	0	Site clearance survey
10/13/2011	EP256-EP263A, AER and FROMM CYs	0	Monitoring construction activities
10/12/2011	Slay Property	0	Site clearance survey
10/12/2011	Slay Property	0	Monitoring construction activities
10/12/2011	EP306-EP312	0	Site clearance survey
10/12/2011	EP291-EP301	0	Monitoring construction activities
10/12/2011	EP269-EP270	0	Site clearance survey
10/12/2011	EP269-EP281	0	Site clearance survey
10/12/2011	EP269-EP281	0	Monitoring construction activities
10/12/2011	EP269-EP270	0	Site clearance survey
10/12/2011	EP311	0	Monitoring construction activities
10/12/2011	EP274-EP278	0	Site clearance survey
10/12/2011	EP274-EP278	0	Monitoring construction activities
10/12/2011	EP269-EP273	0	Site clearance survey
10/12/2011	EP269-EP273	0	Monitoring construction activities
10/12/2011	EP263B-EP267	0	Site clearance survey
10/12/2011	EP256-EP263A, AER and FROMM CYs	0	Site clearance survey
10/12/2011	EP256-EP263A, AER and FROMM CYs	0	Monitoring construction activities
10/11/2011	Slay Property	0	Site clearance survey
10/11/2011	Slay Property	0	Monitoring construction activities
10/11/2011	EP311	0	Monitoring construction activities



**PBS Monitoring Report - Week Ending 10/15/2011**

Date	Location	Number observed	Comments
10/11/2011	EP306-EP312	0	Site clearance survey
10/11/2011	EP306-EP312	0	Afternoon perimeter survey
10/11/2011	EP300-EP306	0	Site clearance survey
10/11/2011	EP291-EP301	0	Monitoring construction activities
10/11/2011	EP269-EP273	0	Site clearance survey
10/11/2011	EP269-EP273	0	Monitoring construction activities
10/11/2011	EP269-EP270	0	Site clearance survey
10/11/2011	EP269-EP270	0	Monitoring construction activities
10/11/2011	EP274-EP278	0	Site clearance survey
10/11/2011	EP274-EP278	0	Monitoring construction activities
10/11/2011	EP263B-EP267	0	Site clearance survey
10/11/2011	EP256-EP263A, AER and FROMM CYs	0	Site clearance survey
10/11/2011	EP256-EP263A, AER and FROMM CYs	0	Monitoring construction activities
10/10/2011	Slay Property	0	Site clearance survey
10/10/2011	Slay Property	0	Monitoring construction activities
10/10/2011	EP306-EP312	0	Site clearance survey
10/10/2011	EP306-EP312	0	Afternoon perimeter survey
10/10/2011	EP305	0	Monitoring construction activities
10/10/2011	EP300-EP306	0	Site clearance survey
10/10/2011	EP300-EP306	0	Monitoring construction activities
10/10/2011	EP300-EP306	0	Site clearance survey
10/10/2011	EP291-EP301	0	Monitoring construction activities
10/10/2011	EP269-EP281	9	Sheep were seen entering I-8 Island during Site Clearance survey
10/10/2011	EP269-EP273	0	Site clearance survey
10/10/2011	EP269-EP273	0	Monitoring construction activities
10/10/2011	EP259-3	0	Monitoring construction activities
10/10/2011	EP274-EP278	0	Site clearance survey
10/10/2011	EP274-EP278	0	Monitoring construction activities
10/10/2011	EP263B-EP267	0	Site clearance survey
10/10/2011	EP256-EP263A, AER and FROMM CYs	0	Site clearance survey
10/10/2011	EP256-EP263A, AER and FROMM CYs	0	Monitoring construction activities
10/9/2011	EP306-EP312	0	Site clearance survey
10/9/2011	EP306-EP312	0	Monitoring construction activities
10/9/2011	EP300-EP306	0	Site clearance survey
10/9/2011	EP300-EP306	0	Monitoring construction activities



**PBS Monitoring Report - Week Ending 10/15/2011**

Date	Location	Number observed	Comments
10/9/2011	EP300-EP306	0	Site clearance survey
10/9/2011	EP300-EP306	0	Monitoring construction activities
10/9/2011	EP269-EP273	0	Site clearance survey
10/9/2011	EP269-EP270	0	Site clearance survey
10/9/2011	EP269-EP270	0	Monitoring construction activities
10/9/2011	EP269-EP270	0	Site clearance survey
10/9/2011	EP256-3	0	Monitoring construction activities
10/9/2011	EP274-EP278	0	Site clearance survey
10/9/2011	EP274-EP278	0	Monitoring construction activities
10/9/2011	EP269-EP270	0	Site clearance survey
10/9/2011	EP269-EP270	0	Monitoring construction activities
10/9/2011	EP256-EP263A, AER and FROMM CYs	0	Site clearance survey
10/9/2011	EP256-EP263A, AER and FROMM CYs	0	Monitoring construction activities
10/8/2011	EP300-EP306	0	Site clearance survey
10/8/2011	EP300-EP306	0	Monitoring construction activity
10/8/2011	EP300-EP306	0	Site clearance survey
10/8/2011	EP300-EP306	0	Morning perimeter survey
10/8/2011	EP291-EP301	0	Monitoring construction activity
10/8/2011	EP278-1	0	Monitoring construction activity
10/8/2011	EP269-EP273	0	Site clearance survey
10/8/2011	EP269-EP270	0	Site clearance survey
10/8/2011	EP269-EP270	0	Monitoring construction activity
10/8/2011	EP269/EP270 Pullsite	0	Monitoring construction activity
10/8/2011	EP269-EP270	0	Site clearance survey
10/8/2011	EP259-3	0	Monitoring construction activity
10/8/2011	EP274-EP278	0	Site clearance survey
10/8/2011	EP274-EP278	0	Monitoring construction activity
10/8/2011	EP269-EP270	0	Site clearance survey
10/8/2011	EP269-EP270	0	Monitoring construction activity
10/8/2011	EP256-EP263A, AER & FROMM CY's	0	Site clearance survey
10/8/2011	EP256-EP263A, AER & FROMM CY's	0	Monitoring construction activity
10/7/2011	Slay Property	0	Site clearance survey
10/7/2011	EP306-EP312	0	Site clearance survey
10/7/2011	EP306-EP312	0	Morning perimeter survey
10/7/2011	EP300-EP306	0	Site clearance survey

**PBS Monitoring Report - Week Ending 10/15/2011**

Date	Location	Number observed	Comments
10/7/2011	EP300-EP306	0	Monitoring construction activity
10/7/2011	EP300-EP306	0	Site clearance survey
10/7/2011	EP300-EP306	0	Morning perimeter survey
10/7/2011	EP291-EP301	0	Site clearance survey
10/7/2011	EP269-EP273	0	Site clearance survey
10/7/2011	EP269-EP270	0	Site clearance survey
10/7/2011	EP269-EP270	0	Monitoring construction activity
10/7/2011	EP269-EP270	0	Site clearance survey
10/7/2011	EP259-3	0	Monitoring construction activity
10/7/2011	EP274-EP278	0	Site clearance survey
10/7/2011	EP274-EP278	0	Monitoring construction activity
10/7/2011	EP256-EP263A, AER & FROMM CY's	0	Site clearance survey
10/7/2011	EP256-EP263A, AER & FROMM CY's	0	Monitoring construction activity
10/6/2011	Slay Property	0	Site clearance survey
10/6/2011	Slay Property	0	Monitoring construction activity
10/6/2011	EP306-EP312	0	Site clearance survey
10/6/2011	EP306-EP312	0	Monitoring construction activity
10/6/2011	EP291-EP301	0	Site clearance survey
10/6/2011	EP269-EP273	0	Site clearance survey
10/6/2011	EP269-EP270	0	Site clearance survey
10/6/2011	EP269-EP270	0	Monitoring construction activity
10/6/2011	EP269-EP281	0	Site clearance survey
10/6/2011	EP269-EP270	0	Site clearance survey
10/6/2011	EP263B-EP267	0	Site clearance survey
10/6/2011	EP256-EP263A, AER & FROMM CY's	0	Site clearance survey
10/6/2011	EP256-EP263A, AER & FROMM CY's	0	Monitoring construction activity
10/5/2011	Slay Property	0	Site clearance survey
10/5/2011	Slay Property	0	Monitoring construction activity
10/5/2011	EP303-2	0	Monitoring construction activity
10/5/2011	EP291-EP301	0	Site clearance survey
10/5/2011	EP269-EP273	0	Site clearance survey
10/5/2011	EP269-EP270	0	Site clearance survey
10/5/2011	EP269-EP270	0	Monitoring construction activity
10/5/2011	EP274-EP278	0	Site clearance survey
10/5/2011	EP274-EP278	0	Monitoring construction activity

**PBS Monitoring Report - Week Ending 10/15/2011**

Date	Location	Number observed	Comments
10/5/2011	EP269-EP281	0	Site clearance survey
10/5/2011	EP269-EP270	0	Site clearance survey
10/5/2011	EP263B-EP267	0	Site clearance survey
10/5/2011	EP256-EP263A, AER & FROMM CY's	0	Site clearance survey
10/5/2011	EP256-EP263A, AER & FROMM CY's	0	Monitoring construction activity
10/4/2011	Slay Property	0	Site clearance survey
10/4/2011	Slay Property	0	Monitoring construction activity
10/4/2011	EP300-EP306	0	Site clearance survey
10/4/2011	EP300-EP306	0	Monitoring construction activity
10/4/2011	EP269-EP273	0	Site clearance survey
10/4/2011	EP269-EP270	0	Site clearance survey
10/4/2011	EP269-EP270	0	Monitoring construction activity
10/4/2011	EP256-EP263A	0	Site clearance survey
10/4/2011	EP274-EP278	0	Site clearance survey
10/4/2011	EP274-EP278	0	Monitoring construction activity
10/4/2011	EP263B-EP267	0	Site clearance survey
10/3/2011	Slay Property	0	Site clearance survey
10/3/2011	Slay Property	0	Monitoring construction activity
10/3/2011	EP300-EP306	0	Site clearance survey
10/3/2011	EP300-EP306	0	Monitoring construction activity
10/3/2011	EP300-EP306	0	Site clearance survey
10/3/2011	EP300-EP306	0	Morning perimeter survey
10/3/2011	EP291-EP341	0	Site clearance survey
10/3/2011	EP279-EP294	0	Site clearance survey
10/3/2011	EP269-EP273	0	Site clearance survey
10/3/2011	EP269-EP273	0	Monitoring construction activity
10/3/2011	EP263B-EP267	0	Site clearance survey
10/3/2011	EP263B-EP267	0	Monitoring construction activity
10/3/2011	EP256-EP263A	0	Site clearance survey
10/3/2011	EP274-EP278	0	Site clearance survey
10/3/2011	EP274-EP278	0	Monitoring construction activity
10/3/2011	EP263B-EP267	0	Site clearance survey
10/2/2011	EP300-EP306	0	Site clearance survey
10/2/2011	EP300-EP306	0	Monitoring construction activity
10/2/2011	EP269-EP281	0	Afternoon perimeter survey

**PBS Monitoring Report - Week Ending 10/15/2011**

Date	Location	Number observed	Comments
10/2/2011	EP269-EP273	0	Afternoon perimeter survey
10/1/2011	EP300-EP306	0	Site clearance survey
10/1/2011	EP300-EP306	0	Monitoring construction activities
10/1/2011	EP300-EP306	0	Site clearance survey
10/1/2011	EP300-EP306	0	Morning perimeter survey
10/1/2011	EP269-EP273 and EP256-EP261	0	Site clearance survey
10/1/2011	EP269-EP273	0	Site clearance survey
10/1/2011	EP269-EP270	0	Site clearance survey
10/1/2011	EP274-EP278	0	Site clearance survey
10/1/2011	EP274-EP278	0	Monitoring construction activities
9/30/2011	Slay Property	0	Site clearance survey
9/30/2011	Slay Property	0	Monitoring construction activities
9/30/2011	EP300-EP312	0	Site clearance survey
9/30/2011	EP300-EP312	0	Monitoring construction activities
9/30/2011	EP300-EP306	0	Site clearance survey
9/30/2011	EP300-EP306	0	Monitoring construction activities
9/30/2011	EP291-EP348	0	Monitoring construction activities
9/30/2011	EP290-EP294, EP300-EP312	0	Site clearance survey
9/30/2011	EP290-EP294, EP300-EP312	0	Monitoring construction activities
9/30/2011	EP269-EP273	0	Site clearance survey
9/30/2011	EP269-EP273	0	Monitoring construction activities
9/30/2011	EP269-EP281	0	Site clearance survey
9/30/2011	EP279-EP294	0	Site clearance survey
9/30/2011	EP274-EP278	0	Site clearance survey
9/30/2011	EP274-EP278	0	Monitoring construction activities
9/30/2011	EP263-B-EP267	0	Site clearance survey
9/30/2011	EP256-EP263A, AER, Fromm CY	0	Site clearance survey
9/30/2011	EP256-EP263A, AER, Fromm CY	0	Monitoring construction activities
9/29/2011	Slay Property	0	Site clearance survey
9/29/2011	Slay Property	0	Monitoring construction activities
9/29/2011	EP300-EP312	0	Site clearance survey
9/29/2011	EP300-EP306	0	Site clearance survey
9/29/2011	EP300-EP306	0	Monitoring construction activities
9/29/2011	EP290-EP294, EP300-EP312	0	Site clearance survey
9/29/2011	EP290-EP294, EP300-EP312	0	Monitoring construction activities

**PBS Monitoring Report - Week Ending 10/15/2011**

Date	Location	Number observed	Comments
9/29/2011	EP269-EP273	0	Site clearance survey
9/29/2011	EP269-EP273	0	Monitoring construction activities
9/29/2011	EP279-EP294	0	Site clearance survey
9/29/2011	EP274-EP278	0	Site clearance survey
9/29/2011	EP274-EP278	0	Monitoring construction activities
9/29/2011	EP263B-EP267	0	Site clearance survey
9/28/2011	Slay Property	0	Site clearance survey
9/28/2011	Slay Property	0	Monitoring construction activities
9/28/2011	EP330-EP291	0	Site clearance survey
9/28/2011	EP300-EP306	0	Site clearance survey
9/28/2011	EP300-EP306	0	Monitoring construction activities
9/28/2011	EP290-EP294	0	Site clearance survey
9/28/2011	EP290-EP294	0	Monitoring construction activities
9/28/2011	EP269-EP273	0	Site clearance survey
9/28/2011	EP269-EP273	0	Monitoring construction activities
9/28/2011	EP256-EP263A-2, AER CY	0	Monitoring construction activities
9/28/2011	EP279-EP294	0	Site clearance survey
9/28/2011	EP279-EP294	0	Monitoring construction activities
9/28/2011	EP274-EP278	0	Site clearance survey
9/28/2011	EP274-EP278	0	Monitoring construction activities
9/28/2011	EP263B-EP267	0	Site clearance survey
9/27/2011	Slay Property	0	Site clearance survey
9/27/2011	Slay Property	0	Monitoring construction activities
9/27/2011	EP339-EP291	0	Site clearance survey
9/27/2011	EP309	0	Monitoring construction activities
9/27/2011	EP300-EP312	0	Site clearance survey
9/27/2011	EP300-EP312	0	Monitoring construction activities
9/27/2011	EP300-EP306	0	Site clearance survey
9/27/2011	EP278-1	0	Monitoring construction activities
9/27/2011	EP269-EP273	0	Site clearance survey
9/27/2011	EP269-EP273	0	Monitoring construction activities
9/27/2011	EP256-EP263A-2, AER CY	0	Monitoring construction activities
9/27/2011	EP279-EP294	0	Site clearance survey
9/27/2011	EP279-EP294	0	Monitoring construction activities
9/27/2011	EP274-EP278	0	Site clearance survey

**PBS Monitoring Report - Week Ending 10/15/2011**

Date	Location	Number observed	Comments
9/27/2011	EP274-EP278	0	Monitoring construction activities
9/27/2011	EP263B-EP267	0	Site clearance survey
9/27/2011	AER CY	0	Monitoring construction activities
9/26/2011	EP300-EP306	0	Site clearance survey
9/26/2011	EP300-EP306	0	Monitoring construction activities
9/26/2011	EP300-EP306	0	Site clearance survey
9/26/2011	EP300-EP312	0	Site clearance survey
9/26/2011	EP300-EP312	0	Monitoring construction activities
9/26/2011	EP291-EP301	0	Monitoring construction activities
9/26/2011	EP278-1, EP270-2	0	Monitoring construction activities
9/26/2011	EP274-EP278	0	Site clearance survey
9/26/2011	EP274-EP278	0	Monitoring construction activities
9/26/2011	EP269-EP273	0	Site clearance survey
9/26/2011	EP269-EP273	0	Monitoring construction activities
9/26/2011	EP269-EP270	0	Morning perimeter survey
9/26/2011	EP269-EP270	0	Monitoring construction activities
9/26/2011	EP256-EP263A-2, AER CY	0	Monitoring construction activities
9/26/2011	EP279-EP294	0	Site clearance survey
9/26/2011	EP279-EP294	0	Monitoring construction activities
9/26/2011	EP269-EP271, EP256-EP263, AER & Fromm CY	0	Site clearance survey
9/26/2011	EP269-EP271, EP256-EP263, AER & Fromm CY	0	Monitoring construction activities
9/26/2011	EP263B-EP267	0	Site clearance survey
9/26/2011	CP88	0	Site clearance survey
9/26/2011	CP88	0	Monitoring construction activities
9/25/2011	EP300-EP306	0	Site clearance survey
9/25/2011	EP300-EP306	0	Monitoring construction activities
9/25/2011	EP300-EP306	0	Morning perimeter survey
9/25/2011	EP278	0	Monitoring construction activities
9/25/2011	EP274-EP278	0	Site clearance survey
9/25/2011	EP274-EP278	0	Monitoring construction activities
9/25/2011	EP271-2	0	Monitoring construction activities
9/25/2011	EP269-EP270	0	Morning perimeter survey
9/25/2011	EP269-EP270	0	Monitoring construction activities
9/25/2011	EP256-EP263A-2, AER CY	0	Monitoring construction activities
9/25/2011	EP279-EP294	0	Site clearance survey

**PBS Monitoring Report - Week Ending 10/15/2011**

Date	Location	Number observed	Comments
9/25/2011	EP279-EP294	0	Monitoring construction activities
9/25/2011	EP269-EP273	0	Site clearance survey
9/25/2011	EP269-EP273	0	Monitoring construction activities
9/25/2011	EP263B-EP267	0	Site clearance survey
9/24/2011	EP300-EP306	0	Site clearance survey
9/24/2011	EP300-EP306	0	Monitoring construction activities
9/24/2011	EP300-EP306	0	Site clearance survey
9/24/2011	EP300-EP306	0	Monitoring construction activities
9/24/2011	EP291/EP292 Pullsite	0	Monitoring construction activities
9/24/2011	EP274-EP278	0	Site clearance survey
9/24/2011	EP274-EP278	0	Monitoring construction activities
9/24/2011	EP274	0	Monitoring construction activities
9/24/2011	EP269-EP270	0	Site clearance survey
9/24/2011	EP269-EP270	0	Monitoring construction activities
9/24/2011	EP256-EP263A-2, AER CY	0	Monitoring construction activities
9/24/2011	EP279-EP294	0	Site clearance survey
9/24/2011	EP279-EP294	0	Monitoring construction activities
9/24/2011	EP263B-EP267	0	Site clearance survey
9/23/2011	EP300-EP306	0	Site clearance survey
9/23/2011	EP300-EP306	0	Monitoring construction activities
9/23/2011	EP300-EP312	0	Site clearance survey
9/23/2011	EP300-EP312	0	Monitoring construction activities
9/23/2011	EP274-1	0	Monitoring construction activities
9/23/2011	EP269-EP271	0	Site clearance survey
9/23/2011	EP269-EP271	0	Monitoring construction activities
9/23/2011	EP256-EP263A-2, AER CY	0	Monitoring construction activities
9/23/2011	EP279-EP294	0	Site clearance survey
9/23/2011	EP279-EP294	0	Monitoring construction activities
9/23/2011	EP278-1	0	Monitoring construction activities
9/23/2011	EP263B-EP267	0	Site clearance survey
9/22/2011	EP300-EP312	0	Site clearance survey
9/22/2011	EP300-EP312	0	Monitoring construction activities
9/22/2011	EP300-EP306	0	Site clearance survey
9/22/2011	EP300-EP306	0	Monitoring construction activities
9/22/2011	EP274-1	0	Monitoring construction activities



**PBS Monitoring Report - Week Ending 10/15/2011**

Date	Location	Number observed	Comments
9/22/2011	EP256-EP263A-2, AER CY	0	Monitoring construction activities
9/22/2011	EP279-EP294	0	Site clearance survey
9/22/2011	EP278-1	0	Monitoring construction activities
9/22/2011	EP274-EP278	0	Site clearance survey
9/22/2011	EP274-EP278	0	Monitoring construction activities
9/22/2011	EP263B-EP267	0	Site clearance survey
9/21/2011	EP300-EP306	0	Site clearance survey
9/21/2011	EP278-1	0	Monitoring construction activities
9/21/2011	EP274-1	0	Monitoring construction activities
9/21/2011	EP269-EP271, EP300-EP312	0	Site clearance survey
9/21/2011	EP269-EP271, EP300-EP312	0	Monitoring construction activities
9/21/2011	EP256-EP263A-2, AER CY	0	Monitoring construction activities
9/21/2011	EP279-EP294	0	Site clearance survey
9/21/2011	EP279-EP294	0	Monitoring construction activities
9/21/2011	EP274-EP278	0	Site clearance survey
9/21/2011	EP274-EP278	0	Monitoring construction activities
9/21/2011	EP269-EP281	0	Site clearance survey
9/21/2011	EP269-EP281	0	Monitoring construction activities
9/21/2011	EP263B-EP267	0	Site clearance survey
9/20/2011	EP300-EP306	0	Site clearance survey
9/20/2011	EP278-1	0	Monitoring construction activities
9/20/2011	EP269-EP273	0	Site clearance survey
9/20/2011	EP269-EP273	0	Monitoring construction activities
9/20/2011	EP269-EP271	0	Site clearance survey
9/20/2011	EP269-EP271	0	Monitoring construction activities
9/20/2011	EP256-EP263A-2, AER CY	0	Monitoring construction activities
9/20/2011	EP279-EP294	0	Site clearance survey
9/20/2011	EP279-EP294	0	Monitoring construction activities
9/20/2011	EP274-EP278	0	Site clearance survey
9/20/2011	EP274-EP278	0	Monitoring construction activities
9/20/2011	EP269-EP281	0	Site clearance survey
9/20/2011	EP269-EP281	0	Monitoring construction activities
9/20/2011	EP263B-EP267	0	Site clearance survey
9/19/2011	EP269-EP273	0	Site clearance survey
9/19/2011	EP269-EP273	0	Monitoring construction activities

**PBS Monitoring Report - Week Ending 10/15/2011**

Date	Location	Number observed	Comments
9/19/2011	EP269-EP271	0	Site clearance survey
9/19/2011	EP269-EP271	0	Monitoring construction activities
9/19/2011	EP256-EP263A-2, AER CY	0	Monitoring construction activities
9/19/2011	EP279-EP294	0	Site clearance survey
9/19/2011	EP279-EP294	0	Monitoring construction activities
9/19/2011	EP274-EP278	0	Site clearance survey
9/19/2011	EP274-EP278	0	Monitoring construction activities
9/19/2011	EP269-EP281	0	Site clearance survey
9/19/2011	EP269-EP281	0	Monitoring construction activities
9/19/2011	EP263B-EP267	0	Site clearance survey
9/18/2011	EP300-EP306	0	Site clearance survey
9/18/2011	EP300-EP312	0	Site clearance survey
9/18/2011	EP300-EP312	0	Monitoring construction activities
9/18/2011	EP269-EP273	0	Site clearance survey
9/18/2011	EP269-EP273	0	Monitoring construction activities
9/18/2011	EP256-EP263A-2, AER CY	0	Monitoring construction activities
9/18/2011	EP279-EP294	0	Site clearance survey
9/18/2011	EP279-EP294	0	Monitoring construction activities
9/18/2011	EP274-EP278	0	Site clearance survey
9/18/2011	EP274-EP278	0	Monitoring construction activities
9/18/2011	EP269-EP281	0	Site clearance survey
9/18/2011	I8 Island	9	Afternoon perimeter survey
9/17/2011	EP300-EP306	0	Site clearance survey
9/17/2011	EP300-EP312	0	Site clearance survey
9/17/2011	EP300-EP312	0	Monitoring construction activities
9/17/2011	EP269-EP273	0	Site clearance survey
9/17/2011	EP269-EP273	0	Monitoring construction activities
9/17/2011	EP274-EP278	0	Site clearance survey
9/17/2011	EP274-EP278	0	Monitoring construction activities
9/17/2011	EP269-EP281	0	Site clearance survey
9/17/2011	EP256-EP263A, AER, Fromm	0	Site clearance survey
9/17/2011	EP256-EP263A, AER, Fromm	0	Monitoring construction activities
9/16/2011	EP300-EP312	0	Site clearance survey
9/16/2011	EP300-EP312	0	Monitoring construction activities
9/16/2011	EP300-EP306	0	Site clearance survey

**PBS Monitoring Report - Week Ending 10/15/2011**

Date	Location	Number observed	Comments
9/16/2011	EP269-EP273	0	Site clearance survey
9/16/2011	EP269-EP273	0	Monitoring construction activities
9/16/2011	EP256-EP263A, AER, Fromm	0	Monitoring construction activities
9/16/2011	EP274-EP278	0	Site clearance survey
9/16/2011	EP274-EP278	0	Monitoring construction activities
9/16/2011	EP269-EP281	0	Site clearance survey
9/16/2011	EP263B-EP267	0	Site clearance survey
9/16/2011	EP256-EP263A, AER, Fromm	0	Site clearance survey
9/16/2011	EP256-EP263A, AER, Fromm	0	Monitoring construction activities
9/15/2011	EP300-EP312	0	Site clearance survey
9/15/2011	EP300-EP312	0	Monitoring construction activities
9/15/2011	EP300-EP306	0	Site clearance survey
9/15/2011	EP300-EP306	0	Monitoring construction activities
9/15/2011	EP269-EP273	0	Site clearance survey
9/15/2011	EP269-EP273	0	Monitoring construction activities
9/15/2011	EP256-EP263A, AER	0	Monitoring construction activities
9/15/2011	EP274-EP278	0	Site clearance survey
9/15/2011	EP274-EP278	0	Monitoring construction activities
9/15/2011	EP269-EP281	0	Site clearance survey
9/15/2011	EP269-EP281	0	Monitoring construction activities
9/15/2011	EP263B-EP267	0	Site clearance survey
9/14/2011	EP310-3	0	Monitoring construction activities
9/14/2011	EP300-EP312	0	Site clearance survey
9/14/2011	EP300-EP312	0	Monitoring construction activities
9/14/2011	EP300-EP306	0	Morning perimeter survey
9/14/2011	EP274-1	0	Monitoring construction activities
9/14/2011	EP269-EP273	0	Site clearance survey
9/14/2011	EP269-EP273	0	Monitoring construction activities
9/14/2011	EP256-EP263A-2, AER	0	Monitoring construction activities
9/14/2011	EP274-EP278	0	Site clearance survey
9/14/2011	EP274-EP278	0	Monitoring construction activities
9/14/2011	EP269-EP281	0	Site clearance survey
9/14/2011	EP269-EP281	0	Monitoring construction activities
9/14/2011	EP263B-EP267	0	Site clearance survey
9/13/2011	EP300-EP312	0	Site clearance survey

**PBS Monitoring Report - Week Ending 10/15/2011**

Date	Location	Number observed	Comments
9/13/2011	EP300-EP312	0	Monitoring construction activities
9/13/2011	EP300-EP306	0	Morning perimeter survey
9/13/2011	EP269-EP273	0	Site clearance survey
9/13/2011	EP269-EP273	0	Monitoring construction activities
9/13/2011	EP256-EP263A-2, AER	0	Monitoring construction activities
9/13/2011	EP274-EP278	0	Site clearance survey
9/13/2011	EP274-EP278	0	Monitoring construction activities
9/13/2011	EP274-EP278	0	Monitoring construction activities
9/13/2011	EP274	0	Monitoring construction activities
9/13/2011	EP269-EP281	0	Site clearance survey
9/13/2011	EP263B-EP267	0	Site clearance survey
9/12/2011	Mountain Springs Grade Road	15	Morning perimeter survey
9/12/2011	EP305-3, EP310	0	Monitoring construction activities
9/12/2011	EP300-EP312	0	Site clearance survey
9/12/2011	EP300-EP312	0	Monitoring construction activities
9/12/2011	EP300-EP306	0	Site clearance survey
9/12/2011	EP300-EP306	0	Monitoring construction activities
9/12/2011	EP269-EP273	0	Site clearance survey
9/12/2011	EP269-EP273	0	Monitoring construction activities
9/12/2011	EP256-EP263A-2, AER	0	Monitoring construction activities
9/12/2011	EP274-EP278	0	Site clearance survey
9/12/2011	EP274-EP278	0	Monitoring construction activities
9/12/2011	EP274-EP278	0	Monitoring construction activities
9/12/2011	EP274	0	Monitoring construction activities
9/12/2011	EP269-EP281	0	Monitoring construction activities
9/12/2011	EP263B-EP267	0	Site clearance survey
9/11/2011	EP300-EP312	0	Site clearance survey
9/11/2011	EP300-EP312	0	Monitoring construction activities
9/11/2011	EP300-EP306	0	Site clearance survey
9/11/2011	EP300-EP306	0	Monitoring construction activities
9/11/2011	EP271-2	0	Monitoring construction activities
9/11/2011	EP269-EP271	0	Site clearance survey
9/11/2011	EP269-EP271	0	Monitoring construction activities
9/11/2011	EP256-EP263A-2, AER	0	Monitoring construction activities
9/11/2011	EP274-EP278	0	Site clearance survey

**PBS Monitoring Report - Week Ending 10/15/2011**

Date	Location	Number observed	Comments
9/11/2011	EP274-EP278	0	Monitoring construction activities
9/11/2011	EP269-EP273	0	Site clearance survey
9/11/2011	EP269-EP273	0	Monitoring construction activities
9/11/2011	EP263B-EP267	0	Site clearance survey
9/11/2011	EP256-EP263A, AER, Fromm	0	Site clearance survey
9/11/2011	EP256-EP263A, AER, Fromm	0	Monitoring construction activities
9/10/2011	EP300-EP312	0	Site clearance survey
9/10/2011	EP300-EP312	0	Monitoring construction activities
9/10/2011	EP300-EP306	0	Site clearance survey
9/10/2011	EP300-EP306	0	Monitoring construction activities
9/10/2011	EP269-EP271	0	Site clearance survey
9/10/2011	EP269-EP271	0	Monitoring construction activities
9/10/2011	EP274-EP278	0	Site clearance survey
9/10/2011	EP274-EP278	0	Monitoring construction activities
9/10/2011	EP269-EP273	0	Morning perimeter survey
9/10/2011	EP269-EP273	0	Monitoring construction activities
9/10/2011	EP269-EP273	0	Evening perimeter survey
9/9/2011	EP300-EP312	0	Site clearance survey
9/9/2011	EP300-EP312	0	Monitoring construction activities
9/9/2011	EP300-EP306	0	Site clearance survey
9/9/2011	EP300-EP306	0	Monitoring construction activities
9/9/2011	EP271-2	0	Monitoring construction activities
9/9/2011	EP269-EP271	0	Site clearance survey
9/9/2011	EP269-EP271	0	Monitoring construction activities
9/9/2011	EP256-EP263A-2, AER yard	0	Monitoring construction activities
9/9/2011	EP256-EP263A, AER and Fromm yards	0	Site clearance survey
9/9/2011	EP256-EP263A, AER and Fromm yards	0	Monitoring construction activities
9/9/2011	EP274-EP278	0	Site clearance survey
9/9/2011	EP274-EP278	0	Monitoring construction activities
9/9/2011	EP269-EP273	0	Morning perimeter survey
9/9/2011	EP269-EP273	0	Monitoring construction activities
9/9/2011	EP269-EP273	0	Evening perimeter survey
9/8/2011	EP300-EP312	0	Site clearance survey
9/8/2011	EP300-EP312	0	Monitoring construction activities
9/8/2011	EP271-2	0	Monitoring construction activities

**PBS Monitoring Report - Week Ending 10/15/2011**

Date	Location	Number observed	Comments
9/8/2011	EP256-EP263A-2, AER yard	0	Monitoring construction activities
9/8/2011	EP279-EP294	0	Site clearance survey
9/8/2011	EP279-EP294	0	Monitoring construction activities
9/8/2011	EP274-EP278	0	Site clearance survey
9/8/2011	EP274-EP278	0	Monitoring construction activities
9/8/2011	EP263B-EP267	0	Site clearance survey
9/7/2011	EP306-1	0	Monitoring construction activities
9/7/2011	EP300-EP312	0	Site clearance survey
9/7/2011	EP300-EP312	0	Monitoring construction activities
9/7/2011	EP300-EP306	0	Site clearance survey
9/7/2011	EP300-EP306	0	Monitoring construction activities
9/7/2011	EP273	0	Monitoring construction activities
9/7/2011	EP269-EP273	0	Site clearance survey
9/7/2011	EP269-EP273	0	Monitoring construction activities
9/7/2011	EP256-EP263A-2, AER yard	0	Monitoring construction activities
9/7/2011	EP278-EP294	0	Morning perimeter survey
9/7/2011	EP278-EP294	0	Monitoring construction activities
9/7/2011	EP278-EP294	0	Evening perimeter survey
9/7/2011	EP274-EP278	0	Site clearance survey
9/7/2011	EP274-EP278	0	Monitoring construction activities
9/7/2011	EP263B-EP267	0	Site clearance survey
9/6/2011	EP300-EP312	0	Site clearance survey
9/6/2011	EP300-EP312	0	Monitoring construction activities
9/6/2011	EP273	0	Monitoring construction activities
9/6/2011	EP269-EP273	0	Site clearance survey
9/6/2011	EP269-EP273	0	Monitoring construction activities
9/6/2011	EP256-EP263A-2, AER yard	0	Monitoring construction activities
9/6/2011	EP278-EP294	0	Morning perimeter survey
9/6/2011	EP278-EP294	0	Monitoring construction activities
9/6/2011	EP278-EP294	0	Evening perimeter survey
9/6/2011	EP274-EP278	0	Site clearance survey
9/6/2011	EP274-EP278	0	Monitoring construction activities
9/6/2011	EP263B-EP267	0	Site clearance survey
9/5/2011	EP300-EP312	0	Site clearance survey
9/5/2011	EP269-EP273	0	Site clearance survey

**PBS Monitoring Report - Week Ending 10/15/2011**

Date	Location	Number observed	Comments
9/5/2011	EP269-EP273	0	Monitoring construction activities
9/5/2011	EP256-EP263A-2, AER yard	0	Monitoring construction activities
9/5/2011	EP274-EP294	0	Site clearance survey
9/5/2011	EP263B-EP267	0	Site clearance survey
9/4/2011	EP300-EP312	0	Site clearance survey
9/4/2011	EP300-EP312	0	Monitoring construction activities
9/4/2011	EP269/EP270 Pullsite	0	Monitoring construction activities
9/4/2011	EP269-EP281	0	Site clearance survey
9/4/2011	EP256-EP263A-2, AER yard	0	Monitoring construction activities
9/4/2011	EP256-EP263A, AER and Fromm yards	0	Site clearance survey
9/4/2011	EP256-EP263A, AER and Fromm yards	0	Monitoring construction activities
9/4/2011	EP279-EP294	0	Site clearance survey
9/4/2011	EP279-EP294	0	Monitoring construction activities
9/4/2011	EP274-EP278	0	Site clearance survey
9/4/2011	EP274-EP278	0	Monitoring construction activities
9/4/2011	EP270	0	Site clearance survey
9/4/2011	EP270	0	Monitoring construction activities
9/3/2011	EP300-EP312	0	Monitoring Construction Activities
9/3/2011	EP300-EP312	0	Site clearance survey
9/3/2011	EP300-EP306	0	Monitoring Construction Activities
9/3/2011	EP300-EP306	0	Site clearance survey
9/3/2011	EP271	0	Monitoring Construction Activities
9/3/2011	EP269-EP273	0	Monitoring Construction Activities
9/3/2011	EP269-EP273	0	Site clearance survey
9/3/2011	EP269-EP281	0	Monitoring Construction Activities
9/3/2011	EP256-EP263A, AER and Fromm Yards	0	Monitoring Construction Activities
9/3/2011	EP256-EP263A, AER and Fromm Yards	0	Site clearance survey
9/3/2011	EP278-EP294	0	Evening perimeter survey
9/3/2011	EP278-EP294	0	Monitoring Construction Activities
9/3/2011	EP278-EP294	0	Morning perimeter survey
9/3/2011	EP269-1 & EP269/EP270 Pull site	0	Monitoring Construction Activities
9/2/2011	I-8 Island	9	Evening perimeter survey 4:45pm - 5:08pm
9/2/2011	I-8 Island	12	Morning perimeter survey 8:35am
9/2/2011	EP300-EP312	0	Monitoring Construction Activities
9/2/2011	EP300-EP312	0	Site clearance survey



**PBS Monitoring Report - Week Ending 10/15/2011**

Date	Location	Number observed	Comments
9/2/2011	EP272 & EP276	0	Monitoring Construction Activities
9/2/2011	EP269-EP273	0	Monitoring Construction Activities
9/2/2011	EP269-EP273	0	Site clearance survey
9/2/2011	EP256-EP263A, AER and Fromm Yards	0	Monitoring Construction Activities
9/2/2011	EP256-EP263A, AER and Fromm Yards	0	Site clearance survey
9/2/2011	EP278-EP294	0	Evening perimeter survey
9/2/2011	EP278-EP294	0	Monitoring Construction Activities
9/2/2011	EP278-EP294	0	Morning perimeter survey
9/2/2011	EP269-EP272	0	Monitoring Construction Activities
9/2/2011	EP269-EP272	0	Site clearance survey
9/2/2011	EP263B-EP267	0	Site clearance survey
9/1/2011	I-8 Island	12	Evening perimeter survey 4:45pm - 5:40pm
9/1/2011	I-8 Island	12	Morning perimeter survey 8:35am
9/1/2011	EP300-EP312	0	Monitoring Construction Activities
9/1/2011	EP300-EP312	0	Site clearance survey
9/1/2011	EP269-EP273	0	Monitoring Construction Activities
9/1/2011	EP269-EP273	0	Site clearance survey
9/1/2011	EP256-EP263A-2	0	Site clearance survey
9/1/2011	EP255	0	Monitoring Construction Activities
9/1/2011	EP300-EP306	0	Site clearance survey
9/1/2011	EP278-EP294	0	Evening perimeter survey
9/1/2011	EP278-EP294	0	Monitoring Construction Activities
9/1/2011	EP278-EP294	0	Morning perimeter survey
9/1/2011	EP269-EP272	0	Monitoring Construction Activities
9/1/2011	EP269-EP272	0	Site clearance survey
9/1/2011	EP263B-EP267	0	Site clearance survey
8/31/2011	I-8 Island	0	Site clearance survey
8/31/2011	EP308	0	Monitoring Construction Activities
8/31/2011	EP300-EP312	0	Monitoring Construction Activities
8/31/2011	EP300-EP312	0	Site clearance survey
8/31/2011	EP269-EP273	0	Monitoring Construction Activities
8/31/2011	EP269-EP273	0	Site clearance survey
8/31/2011	EP300-EP306	0	Site clearance survey
8/31/2011	EP278-EP294	0	Evening perimeter survey
8/31/2011	EP278-EP294	0	Monitoring Construction Activities

**PBS Monitoring Report - Week Ending 10/15/2011**

Date	Location	Number observed	Comments
8/31/2011	EP278-EP294	0	Morning perimeter survey
8/31/2011	EP269-EP272	0	Monitoring Construction Activities
8/31/2011	EP263B-EP267	0	Site clearance survey
8/30/2011	I-8 Island	16	Evening perimeter survey 4:30pm
8/30/2011	I-8 Island	9	Morning perimeter survey 9:10am - 9:30am
8/30/2011	EP300-EP312	0	Monitoring Construction Activities
8/30/2011	EP300-EP312	0	Site clearance survey
8/30/2011	EP269-EP273	0	Monitoring Construction Activities
8/30/2011	EP269-EP273	0	Site clearance survey
8/30/2011	EP300-EP306	0	Site clearance survey
8/30/2011	EP278-EP294	0	Evening perimeter survey
8/30/2011	EP278-EP294	0	Monitoring Construction Activities
8/30/2011	EP278-EP294	0	Morning perimeter survey
8/30/2011	EP274-EP278	0	Monitoring Construction Activities
8/30/2011	EP274-EP278	0	Site clearance survey
8/30/2011	EP269-EP272	0	Monitoring Construction Activities
8/30/2011	EP269-EP272	0	Site clearance survey
8/30/2011	EP263B-EP267	0	Site clearance survey
8/29/2011	I-8 Island	4	Morning perimeter survey 8:55am
8/29/2011	I-8 Island	12	Evening perimeter survey 4:35pm to 5:00pm
8/29/2011	EP300-EP312	0	Monitoring Construction Activities
8/29/2011	EP300-EP312	0	Site clearance survey
8/29/2011	EP278-2	0	Monitoring Construction Activities
8/29/2011	EP269-EP273	0	Monitoring Construction Activities
8/29/2011	EP269-EP273	0	Site clearance survey
8/29/2011	EP256-EP263A-2, AER Yard	0	Monitoring Construction Activities
8/29/2011	EP300-EP306	0	Site clearance survey
8/29/2011	EP274-EP278	0	Monitoring Construction Activities
8/29/2011	EP274-EP278	0	Site clearance survey
8/29/2011	EP269-EP272	0	Monitoring Construction Activities
8/29/2011	EP269-EP272	0	Site clearance survey
8/29/2011	EP263B-EP267	0	Site clearance survey
8/28/2011	I-8 Island	15	Morning perimeter survey @9:22am
8/28/2011	EP305	0	Monitoring Construction Activities
8/28/2011	EP281	0	Monitoring Construction Activities

**PBS Monitoring Report - Week Ending 10/15/2011**

Date	Location	Number observed	Comments
8/28/2011	EP273	0	Monitoring Construction Activities
8/28/2011	EP269-EP273	0	Monitoring Construction Activities
8/28/2011	EP269-EP273	0	Site clearance survey
8/28/2011	EP256-EP263A-2, AER Yard	0	Monitoring Construction Activities
8/28/2011	EP300-EP306	0	Morning perimeter survey
8/28/2011	EP278-EP294	0	Evening perimeter survey
8/28/2011	EP278-EP294	0	Monitoring Construction Activities
8/28/2011	EP278-EP294	0	Morning perimeter survey
8/28/2011	EP274-EP278	0	Monitoring Construction Activities
8/28/2011	EP274-EP278	0	Site clearance survey
8/28/2011	EP269-EP272	0	Monitoring Construction Activities
8/28/2011	EP269-EP272	0	Site clearance survey
8/28/2011	EP263-B, EP267	0	Site clearance survey
8/27/2011	I-8 Island	0	Site clearance survey
8/27/2011	EP305	0	Monitoring Construction Activities
8/27/2011	EP300-EP306, EP269-EP273	0	Monitoring Construction Activities
8/27/2011	EP300-EP306, EP269-EP273	0	Site clearance survey
8/27/2011	I-8 Island	0	Morning perimeter survey
8/27/2011	EP305	0	Monitoring Construction Activities
8/27/2011	EP300-EP306, EP269-EP273	0	Site clearance survey
8/27/2011	EP300-EP306, EP269-EP273	0	Monitoring Construction Activities
8/27/2011	EP272-3	0	Monitoring Construction Activities
8/27/2011	EP261	0	Monitoring Construction Activities
8/27/2011	EP256-EP263A-2, AER Yard	0	Monitoring Construction Activities
8/27/2011	EP278-EP294	0	Site clearance survey
8/27/2011	EP278-EP294	0	Monitoring Construction Activities
8/27/2011	EP274-EP278	0	Site clearance survey
8/27/2011	EP274-EP278	0	Monitoring Construction Activities
8/27/2011	EP269-EP272	0	Monitoring Construction Activities
8/27/2011	EP269-EP272	0	Site clearance survey
8/27/2011	EP263B-EP267	0	Site clearance survey
8/26/2011	I-8 Island	0	Morning perimeter survey
8/26/2011	EP269-EP273	0	Monitoring Construction Activities
8/26/2011	EP269-EP273	0	Morning perimeter survey
8/26/2011	EP256-EP263A-2, AER Yard	0	Monitoring Construction Activities

**PBS Monitoring Report - Week Ending 10/15/2011**

Date	Location	Number observed	Comments
8/26/2011	EP300-EP306	0	Monitoring Construction Activities
8/26/2011	EP278-EP294	0	Evening perimeter survey
8/26/2011	EP278-EP294	0	Monitoring Construction Activities
8/26/2011	EP278-EP294	0	Morning perimeter survey
8/26/2011	EP274-EP278	0	Monitoring Construction Activities
8/26/2011	EP274-EP278	0	Site clearance survey
8/26/2011	EP269-EP272	0	Monitoring Construction Activities
8/26/2011	EP269-EP272	0	Morning perimeter survey
8/25/2011	I-8 Island	0	Morning perimeter survey
8/25/2011	EP269-EP273	0	Monitoring Construction Activities
8/25/2011	EP269-EP273	0	Morning perimeter survey
8/25/2011	EP256-EP263A-2, AER Yard	0	Monitoring Construction Activities
8/25/2011	EP278-EP294	0	Evening perimeter survey
8/25/2011	EP278-EP294	0	Monitoring Construction Activities
8/25/2011	EP278-EP294	0	Morning perimeter survey
8/25/2011	EP274-EP278	0	Monitoring Construction Activities
8/25/2011	EP274-EP278	0	Site clearance survey
8/25/2011	EP270-EP272	0	Site clearance survey
8/25/2011	EP269-EP272	0	Monitoring Construction Activities
8/25/2011	EP269-EP272	0	Morning perimeter survey
8/24/2011	EP300-EP312, EP263B-EP267	0	Monitoring Construction Activities
8/24/2011	EP300-EP312, EP263B-EP267	0	Site clearance survey
8/24/2011	EP269-EP273	0	Monitoring Construction Activities
8/24/2011	EP269-EP273	0	Site clearance survey
8/24/2011	EP256-EP263A-2, AER Yard	0	Monitoring Construction Activities
8/24/2011	EP278-EP294	0	Evening perimeter survey
8/24/2011	EP278-EP294	0	Monitoring Construction Activities
8/24/2011	EP278-EP294	0	Morning perimeter survey
8/24/2011	EP274-EP278	0	Monitoring Construction Activities
8/24/2011	EP274-EP278	0	Site clearance survey
8/23/2011	I-8 Island	0	Morning perimeter survey
8/23/2011	EP300-EP312, EP263B-EP267	0	Monitoring Construction Activities
8/23/2011	EP300-EP312, EP263B-EP267	0	Site clearance survey
8/23/2011	EP269-EP273	0	Monitoring Construction Activities
8/23/2011	EP269-EP273	0	Site clearance survey

**PBS Monitoring Report - Week Ending 10/15/2011**

Date	Location	Number observed	Comments
8/23/2011	EP278-EP294	0	Evening perimeter survey
8/23/2011	EP278-EP294	0	Monitoring Construction Activities
8/23/2011	EP278-EP294	0	Morning perimeter survey
8/23/2011	EP274-EP278	0	Monitoring Construction Activities
8/23/2011	EP274-EP278	0	Morning perimeter survey
8/23/2011	EP270-EP272	0	Morning perimeter survey
8/23/2011	EP269-EP272	0	Morning perimeter survey
8/22/2011	EP300-EP312, EP263B-EP267	0	Monitoring Construction Activities
8/22/2011	EP300-EP312, EP263B-EP267	0	Morning perimeter survey
8/22/2011	EP269-EP273	0	Monitoring Construction Activities
8/22/2011	EP269-EP273	0	Monitoring Construction Activities
8/22/2011	EP269-EP273	0	Morning perimeter survey
8/22/2011	EP263B	0	Monitoring Construction Activities
8/22/2011	EP256-EP263A-2, AER Yard	0	Monitoring Construction Activities
8/22/2011	EP291	0	Monitoring Construction Activities
8/22/2011	EP278-EP294	0	Evening perimeter survey
8/22/2011	EP278-EP294	0	Monitoring Construction Activities
8/22/2011	EP278-EP294	0	Morning perimeter survey
8/21/2011	I-8 Island	11	Evening perimeter survey - 6:00pm
8/21/2011	EP269-EP273	0	Site clearance survey
8/21/2011	EP256-EP263A-2, AER Yard	0	Monitoring Construction Activities
8/21/2011	EP256-EP263	0	Monitoring Construction Activities
8/21/2011	EP256-EP263	0	Site clearance survey
8/21/2011	EP279-EP294	0	Afternoon clearance survey
8/21/2011	EP274-EP278	0	Evening perimeter survey
8/21/2011	EP269-EP272	0	Evening perimeter survey
8/21/2011	EP263B-EP267	0	Site clearance survey
8/20/2011	I8 and Moutain Spring Rd	3	Morning perimeter survey 9:20am
8/20/2011	I8 and Moutain Spring Rd	4	Evening perimeter survey 6:40pm
8/20/2011	EP300-EP312	0	Monitoring construction activities
8/20/2011	EP300-EP312	0	Site clearance survey
8/20/2011	EP269-EP273	0	Monitoring construction activities
8/20/2011	EP269-EP273	0	Site clearance survey
8/20/2011	EP256-EP263A-2, AER Yard	0	Monitoring construction activities
8/20/2011	EP300-EP306	0	Morning perimeter survey

**PBS Monitoring Report - Week Ending 10/15/2011**

Date	Location	Number observed	Comments
8/20/2011	EP274-EP294	0	Monitoring construction activities
8/20/2011	EP274-EP294	0	Site clearance survey
8/20/2011	EP270-EP271	0	Morning perimeter survey
8/20/2011	EP269-EP271	0	Monitoring construction activities
8/20/2011	EP263B-EP267	0	Site clearance survey
8/19/2011	Radiator Water Tower 17	7	Site clearance survey
8/19/2011	EP298, EP300 & EP307	0	Site clearance survey
8/19/2011	EP296, EP300	0	Monitoring construction activities
8/19/2011	EP296, EP300	0	Site clearance survey
8/19/2011	EP269-EP273	0	Monitoring construction activities
8/19/2011	EP269-EP273	0	Site clearance survey
8/19/2011	EP256-EP263A-2, AER Yard	0	Monitoring construction activities
8/19/2011	EP291-EP293	0	Monitoring construction activities
8/19/2011	EP279-EP294	0	Monitoring construction activities
8/19/2011	EP274-EP278	0	Monitoring construction activities
8/19/2011	EP274-EP278	0	Site clearance survey
8/19/2011	EP263B-EP267	0	Site clearance survey
8/18/2011	EP269-EP273	0	Monitoring construction activities
8/18/2011	EP269-EP273	0	Site clearance survey
8/18/2011	EP349, EP293	0	Monitoring construction activities
8/18/2011	EP279-EP312	0	Monitoring construction activities
8/18/2011	EP274-EP278	0	Monitoring construction activities
8/18/2011	EP274-EP278	0	Site clearance survey
8/18/2011	EP263B-EP267	0	Site clearance survey
8/17/2011	EP300-EP312, EP290-EP294	0	Monitoring construction activities
8/17/2011	EP300-EP312, EP290-EP294	0	Site clearance survey
8/17/2011	EP269-EP273	0	Monitoring construction activities
8/17/2011	EP269-EP273	0	Site clearance survey
8/17/2011	EP256-EP263A-2, AER Yard	0	Monitoring construction activities
8/17/2011	EP279-EP294	0	Monitoring construction activities
8/17/2011	EP279-EP294	0	Site clearance survey
8/17/2011	EP274-EP278	0	Monitoring construction activities
8/17/2011	EP274-EP278	0	Site clearance survey
8/17/2011	EP263B-EP267	0	Site clearance survey
8/16/2011	EP300-EP312, EP290-EP294	0	Monitoring construction activities

**PBS Monitoring Report - Week Ending 10/15/2011**

Date	Location	Number observed	Comments
8/16/2011	EP300-EP312, EP290-EP294	0	Site clearance survey
8/16/2011	EP269-EP273	0	Monitoring construction activities
8/16/2011	EP269-EP273	0	Site clearance survey
8/16/2011	EP256-EP263A-2, AER Yard	0	Monitoring construction activities
8/16/2011	EP279-EP294	0	Monitoring construction activities
8/16/2011	EP279-EP294	0	Site clearance survey
8/16/2011	EP274-EP278	0	Monitoring construction activities
8/16/2011	EP274-EP278	0	Site clearance survey
8/16/2011	EP265	0	Monitoring construction activities
8/16/2011	EP263B-EP267	0	Site clearance survey
8/15/2011	Fromm and AER Construction Yard	0	Monitoring construction activities
8/15/2011	EP300-EP312, EP290-EP294	0	Monitoring construction activities
8/15/2011	EP300-EP312, EP290-EP294	0	Site clearance survey
8/15/2011	EP294	0	Monitoring construction activities
8/15/2011	EP269-EP273	0	Site clearance survey
8/15/2011	EP269-EP273	0	Monitoring construction activities
8/15/2011	EP256-EP263A-2, AER Yard	0	Monitoring construction activities
8/15/2011	EP279-EP294	0	Monitoring construction activities
8/15/2011	EP279-EP294	0	Site clearance survey
8/15/2011	EP274-EP278	0	Monitoring construction activities
8/15/2011	EP274-EP278	0	Site clearance survey
8/15/2011	EP263B-EP267	0	Site clearance survey
8/14/2011	EP274-EP278	0	Monitoring construction activities
8/14/2011	EP263B-EP267	0	Site clearance survey
8/14/2011	EP274-EP278	0	Evening perimeter survey
8/14/2011	EP279-294	0	Monitoring construction activities
8/14/2011	EP269-EP273	0	Evening perimeter survey
8/14/2011	EP300-EP312	0	Site clearance survey
8/14/2011	EP300-EP312	0	Monitoring construction activities
8/13/2011	Fromm Construction Yard	0	Site clearance survey
8/13/2011	I-8 Island	19	Morning perimeter survey at 9:54am - 10:45am
8/13/2011	I-8 Island	6	Evening perimeter survey at 4:35pm
8/13/2011	EP263B-EP267	0	Site clearance survey
8/13/2011	EP269-EP271	0	Monitoring construction activities
8/13/2011	EP270-EP271	0	Monitoring construction activities



**PBS Monitoring Report - Week Ending 10/15/2011**

Date	Location	Number observed	Comments
8/13/2011	EP274-EP278	0	Monitoring construction activities
8/13/2011	EP279-294	0	Monitoring construction activities
8/13/2011	EP300-EP306	0	Monitoring construction activities
8/13/2011	EP259B	0	Site clearance survey
8/13/2011	EP269-EP273	0	Monitoring construction activities
8/13/2011	EP300-EP312, EP290-EP294	0	Site clearance survey
8/13/2011	EP300-EP312, EP290-EP294	0	Monitoring construction activities
8/12/2011	I-8 Island	26	Evening perimeter survey at 4:25pm - 5:45
8/12/2011	EP263B-EP267	0	Site clearance survey
8/12/2011	EP269-EP271	0	Monitoring construction activities
8/12/2011	EP270-EP271	0	Monitoring construction activities
8/12/2011	EP279-294	0	Monitoring construction activities
8/12/2011	EP300-EP306	0	Monitoring construction activities
8/12/2011	EP300-EP312	0	Monitoring construction activities
8/12/2011	EP256-EP263A-2, AER Yard	0	Monitoring construction activities
8/12/2011	EP259B	0	Site clearance survey
8/12/2011	EP269-EP273	0	Monitoring construction activities
8/12/2011	EP274-EP278, EP290-EP294	0	Site clearance survey
8/12/2011	EP274-EP278, EP290-EP294	0	Monitoring construction activities
8/12/2011	EP294	0	Monitoring construction activities
8/11/2011	I-8 Island	12	Morning perimeter survey at 10:50am
8/11/2011	I-8 Island	28	Evening perimeter survey at 6:19pm
8/11/2011	EP263B-EP267	0	Site clearance survey
8/11/2011	EP269-EP271	0	Monitoring construction activities
8/11/2011	EP270-EP271	0	Monitoring construction activities
8/11/2011	EP279-294	0	Monitoring construction activities
8/11/2011	EP300-EP306	0	Monitoring construction activities
8/11/2011	EP300-EP312	0	Monitoring construction activities
8/11/2011	EP256-EP263A-2, AER Yard	0	Monitoring construction activities
8/11/2011	EP259B	0	Site clearance survey
8/11/2011	EP269-EP273	0	Monitoring construction activities
8/11/2011	EP274-EP278	0	Site clearance survey
8/11/2011	EP274-EP278	0	Monitoring construction activities
8/11/2011	EP292-EP356	0	Monitoring construction activities
8/11/2011	EP294	0	Monitoring construction activities

**PBS Monitoring Report - Week Ending 10/15/2011**

Date	Location	Number observed	Comments
8/10/2011	I-8 Island	16	Evening perimeter survey at 4:55pm - 5:08
8/10/2011	EP263B-EP267	0	Site clearance survey
8/10/2011	EP269-EP271	0	Monitoring construction activities
8/10/2011	EP270-EP271	0	Monitoring construction activities
8/10/2011	EP273	0	Monitoring construction activities
8/10/2011	EP300-EP306	0	Monitoring construction activities
8/10/2011	EP256-EP263A-2, AER Yard	0	Monitoring construction activities
8/10/2011	EP259B	0	Site clearance survey
8/10/2011	EP269-EP273	0	Monitoring construction activities
8/10/2011	EP294	0	Monitoring construction activities
8/10/2011	EP300-EP312	0	Morning perimeter survey
8/10/2011	EP300-EP312	0	Monitoring construction activities
8/10/2011	EP300-EP312	0	Evening perimeter survey
8/10/2011	EP227, EP232, EP258, EP314, EP317, EP348, EP349	0	Site clearance survey
8/9/2011	I-8 Island	3	Morning perimeter survey at 10:30am
8/9/2011	I-8 Island	18	Evening perimeter survey at 4:30pm - 5:06pm
8/9/2011	EP263B-EP267	0	Site clearance survey
8/9/2011	EP269-EP271	0	Monitoring construction activities
8/9/2011	EP270-EP271	0	Monitoring construction activities
8/9/2011	EP270-EP273	0	Monitoring construction activities
8/9/2011	EP274-EP278	0	Monitoring construction activities
8/9/2011	EP279-294	0	Monitoring construction activities
8/9/2011	EP300-EP306	0	Monitoring construction activities
8/9/2011	EP305	0	Monitoring construction activities
8/9/2011	EP256-EP263A-2, AER Yard	0	Monitoring construction activities
8/9/2011	EP269-EP273	0	Site clearance survey
8/9/2011	EP294	0	Monitoring construction activities
8/9/2011	EP300-EP312	0	Morning perimeter survey
8/9/2011	EP300-EP312	0	Monitoring construction activities
8/9/2011	EP300-EP312	0	Evening perimeter survey
8/8/2011	I-8 Island	4	Morning perimeter survey at 9:45am - 9:55am
8/8/2011	I-8 Island	22	Evening perimeter survey at 4:24pm - 5:14pm
8/8/2011	EP279-294	3	Monitoring construction activities
8/8/2011	EP263B-EP267	0	Site clearance survey
8/8/2011	EP269-EP271	0	Monitoring construction activities

**PBS Monitoring Report - Week Ending 10/15/2011**

Date	Location	Number observed	Comments
8/8/2011	EP270-EP271	0	Monitoring construction activities
8/8/2011	EP273	0	Monitoring construction activities
8/8/2011	EP274-EP278	0	Monitoring construction activities
8/8/2011	EP300-EP306	0	Monitoring construction activities
8/8/2011	EP256-EP263A-2, AER Yard	0	Monitoring construction activities
8/8/2011	EP269-EP273	0	Site clearance survey
8/8/2011	EP294	0	Monitoring construction activities
8/8/2011	EP300-EP312	0	Morning perimeter survey
8/8/2011	EP300-EP312	0	Monitoring construction activities
8/8/2011	EP300-EP312	0	Evening perimeter survey
8/8/2011	EP301-EP324, EP259-3, EP259B	0	Monitoring construction activities
8/8/2011	EP290-EP300	0	Site clearance survey
8/7/2011	I-8 Island	27	Evening perimeter survey at 6:00pm - 6:45
8/7/2011	EP263B-EP267	0	Site clearance survey
8/7/2011	EP270-EP271	0	Monitoring construction activities
8/7/2011	EP274-EP278	0	Monitoring construction activities
8/7/2011	EP279-294	0	Monitoring construction activities
8/7/2011	EP256-EP263A-2, AER Yard	0	Monitoring construction activities
8/7/2011	EP269-EP273	0	Evening perimeter survey
8/7/2011	EP300-EP312	0	Evening perimeter survey
8/6/2011	EP278 & EP277	0	Monitoring construction activities
8/6/2011	I-8 Island	12	Afternoon perimeter survey at 1:20pm
8/6/2011	EP263B-EP267	0	Site clearance survey
8/6/2011	EP269-EP271	0	Monitoring construction activities
8/6/2011	EP270-EP271	0	Monitoring construction activities
8/6/2011	EP274-EP278	0	Monitoring construction activities
8/6/2011	EP279-294	0	Monitoring construction activities
8/6/2011	EP300-EP306	0	Monitoring construction activities
8/6/2011	EP262, EP266, EP267	0	Site clearance survey
8/6/2011	EP269-EP273	0	Monitoring construction activities
8/6/2011	EP307-EP315	0	Morning perimeter survey
8/6/2011	EP307-EP316	0	Monitoring construction activities
8/6/2011	EP307-EP317	0	Evening perimeter survey
8/5/2011	EP263B-EP267	0	Site clearance survey
8/5/2011	EP271, EP273, EP274, EP277 and EP278	0	Monitoring construction activities

**PBS Monitoring Report - Week Ending 10/15/2011**

Date	Location	Number observed	Comments
8/5/2011	EP274-EP278	0	Monitoring construction activities
8/5/2011	EP279-294	0	Monitoring construction activities
8/5/2011	EP256-EP263A-2, AER Yard	0	Monitoring construction activities
8/5/2011	EP269-EP273	0	Monitoring construction activities
8/5/2011	EP294	0	Monitoring construction activities
8/5/2011	EP307-EP312	0	Morning perimeter survey
8/5/2011	EP307-EP313	0	Monitoring construction activities
8/5/2011	EP307-EP314	0	Evening perimeter survey
8/4/2011	I-8 Island	23	Evening perimeter survey at 4:00pm - 4:33pm
8/4/2011	EP263B-EP267	0	Site clearance survey
8/4/2011	EP269-EP271	0	Monitoring construction activities
8/4/2011	EP270-EP271	0	Monitoring construction activities
8/4/2011	EP274-EP278	0	Monitoring construction activities
8/4/2011	EP279-294	0	Monitoring construction activities
8/4/2011	EP300-EP306	0	Monitoring construction activities
8/4/2011	EP256-EP263A-2, AER Yard	0	Monitoring construction activities
8/4/2011	EP269-EP273	0	Monitoring construction activities
8/4/2011	EP294	0	Monitoring construction activities
8/3/2011	I-8 Island	17	Evening perimeter survey at 5:45pm - 6:05pm
8/3/2011	EP256-EP263	0	Monitoring construction activities
8/3/2011	EP263B-EP267	0	Site clearance survey
8/3/2011	EP269-EP271	0	Monitoring construction activities
8/3/2011	EP270-EP271	0	Monitoring construction activities
8/3/2011	EP274-EP278	0	Monitoring construction activities
8/3/2011	EP279-294	0	Monitoring construction activities
8/3/2011	EP290-EP312	0	Monitoring construction activities
8/3/2011	EP300-EP306	0	Monitoring construction activities
8/3/2011	EP256-EP263A-2, AER Yard	0	Monitoring construction activities
8/3/2011	EP269/EP270 Pullsite	0	Monitoring construction activities
8/3/2011	EP269-EP273	0	Monitoring construction activities
8/3/2011	EP271	0	Monitoring construction activities
8/3/2011	EP294	0	Monitoring construction activities
8/3/2011	EP300-EP312, EP290-EP294	0	Site clearance survey
8/3/2011	EP300-EP312, EP290-EP294	0	Monitoring construction activities
8/3/2011	I-8 Island	0	Monitoring construction activities

**PBS Monitoring Report - Week Ending 10/15/2011**

Date	Location	Number observed	Comments
8/2/2011	I-8 Island	12	Morning perimeter survey at 9:50am
8/2/2011	I-8 Island	23	Evening perimeter survey at 4:30pm
8/2/2011	EP263B-EP267	0	Site clearance survey
8/2/2011	EP269-EP271	0	Monitoring construction activities
8/2/2011	EP270-EP271	0	Monitoring construction activities
8/2/2011	EP279-294	0	Monitoring construction activities
8/2/2011	EP300-EP306	0	Monitoring construction activities
8/2/2011	EP269/EP270 Pullsite	0	Monitoring construction activities
8/2/2011	EP269-EP273	0	Monitoring construction activities
8/2/2011	EP271 and EP273	0	Monitoring construction activities
8/2/2011	EP273	0	Monitoring construction activities
8/2/2011	EP274-EP278	0	Monitoring construction activities
8/2/2011	EP294	0	Monitoring construction activities
8/1/2011	I-8 Island	19	Morning perimeter survey at 10:00 - 10:20am
8/1/2011	I-8 Island	1	Evening perimeter survey at 4:30pm
8/1/2011	EP263B-EP267	0	Site clearance survey
8/1/2011	EP269-EP271	0	Monitoring construction activities
8/1/2011	EP270-EP271	0	Monitoring construction activities
8/1/2011	EP274-EP278	0	Monitoring construction activities
8/1/2011	EP279-294	0	Monitoring construction activities
8/1/2011	EP290-EP312	0	Monitoring construction activities
8/1/2011	EP300-EP306	0	Monitoring construction activities
8/1/2011	EP256-EP263A-2, AER Yard	0	Monitoring construction activities
8/1/2011	EP269	0	Monitoring construction activities
8/1/2011	EP269-EP273	0	Monitoring construction activities
8/1/2011	EP272	0	Monitoring construction activities
8/1/2011	EP291 & EP301-EP304	0	Monitoring construction activities
8/1/2011	EP300-EP312, EP290-EP294	0	Site clearance survey
8/1/2011	EP300-EP312, EP290-EP294	0	Monitoring construction activities
7/31/2011	I-8 Island	24	Evening perimeter survey at 5:55pm
7/31/2011	EP263B-EP267	0	Site clearance survey
7/31/2011	EP270-EP271	0	Monitoring construction activities
7/31/2011	EP274-EP278	0	Monitoring construction activities
7/31/2011	EP256-EP263A-2, AER Yard	0	Monitoring construction activities
7/31/2011	EP269-EP273	0	Evening perimeter survey

**PBS Monitoring Report - Week Ending 10/15/2011**

Date	Location	Number observed	Comments
7/31/2011	EP279-EP294	0	Site clearance survey
7/31/2011	EP300-EP312, EP290-EP294	0	Site clearance survey
7/30/2011	EP271	1	Morning perimeter survey at 7:00am
7/30/2011	EP256-EP263A-2, AER Yard	6	Monitoring during construction activities. These sheep were outside of all work areas and associated buffers and did not impact work.
7/30/2011	I-8 Island	11	Morning perimeter survey at 10:15am - 11:07
7/30/2011	I-8 Island	7	Evening perimeter survey at 4:12pm
7/30/2011	EP263B-EP267	0	Site clearance survey
7/30/2011	EP269	0	Site clearance survey
7/30/2011	EP269-EP272	0	Monitoring construction activities
7/30/2011	EP270-EP271	0	Monitoring construction activities
7/30/2011	EP274-EP278	0	Monitoring construction activities
7/30/2011	EP279-294	0	Monitoring construction activities
7/30/2011	EP300-EP306	0	Monitoring construction activities
7/30/2011	EP269	0	Monitoring construction activities
7/30/2011	EP269-EP273	0	Site clearance survey
7/30/2011	EP270-EP271	0	Monitoring construction activities
7/30/2011	EP300-EP312, EP290-EP294	0	Site clearance survey
7/30/2011	EP300-EP312, EP290-EP294	0	Monitoring construction activities
7/29/2011	I-8 Island	14	Morning perimeter survey at 8:55am
7/29/2011	I-8 Island	2	Evening perimeter survey at 4:00pm
7/29/2011	EP263B-EP267	0	Site clearance survey
7/29/2011	EP269	0	Site clearance survey
7/29/2011	EP269-EP272	0	Monitoring construction activities
7/29/2011	EP270-EP271	0	Monitoring construction activities
7/29/2011	EP274-EP278	0	Monitoring construction activities
7/29/2011	EP279-294	0	Monitoring construction activities
7/29/2011	EP300-EP306	0	Monitoring construction activities
7/29/2011	EP256-EP263A-2, AER Yard	0	Monitoring construction activities
7/29/2011	EP269	0	Monitoring construction activities
7/29/2011	EP269-EP273	0	Site clearance survey
7/29/2011	EP270	0	Monitoring construction activities
7/29/2011	EP300-EP312	0	Morning perimeter survey
7/29/2011	EP300-EP312	0	Monitoring construction activities
7/29/2011	EP300-EP312	0	Evening perimeter survey

**PBS Monitoring Report - Week Ending 10/15/2011**

Date	Location	Number observed	Comments
7/29/2011	EP303	0	Monitoring construction activities
7/28/2011	EP269	4	Monitoring during construction activities
7/28/2011	I-8 Island	11	Morning perimeter survey at 9:19am
7/28/2011	I-8 Island	8	Evening perimeter survey at 4:00pm - 4:50pm
7/28/2011	EP279-294	0	Monitoring construction activities
7/28/2011	EP263B-EP267	0	Site clearance survey
7/28/2011	EP269	0	Site clearance survey
7/28/2011	EP270-EP271	0	Monitoring construction activities
7/28/2011	EP274-EP278	0	Monitoring construction activities
7/28/2011	EP300-EP306	0	Monitoring construction activities
7/28/2011	EP256-EP263A-2, AER Yard	0	Monitoring construction activities
7/28/2011	EP269	0	Monitoring construction activities
7/28/2011	EP270	0	Monitoring construction activities
7/28/2011	EP300-EP312	0	Morning perimeter survey
7/28/2011	EP300-EP312	0	Monitoring construction activities
7/28/2011	EP300-EP312	0	Evening perimeter survey
7/28/2011	AER CY	0	Site clearance survey
7/27/2011	I-8 Island	13	Evening perimeter survey at 6:30pm - 7:00pm
7/27/2011	EP279-294	0	Monitoring construction activities
7/27/2011	EP263B-EP267	0	Site clearance survey
7/27/2011	EP268 - EP263	0	Monitoring construction activities
7/27/2011	EP269	0	Site clearance survey
7/27/2011	EP270-EP271	0	Monitoring construction activities
7/27/2011	EP274-EP278	0	Monitoring construction activities
7/27/2011	EP300-EP306	0	Monitoring construction activities
7/27/2011	EP256-EP263A-2, AER Yard	0	Monitoring construction activities
7/27/2011	EP269-EP273	0	Morning perimeter survey
7/27/2011	EP269-EP273	0	Evening perimeter survey
7/27/2011	EP300-EP312	0	Morning perimeter survey
7/27/2011	EP300-EP312	0	Monitoring construction activities
7/27/2011	EP300-EP312	0	Evening perimeter survey
7/26/2011	Devils Canyon Bridge1, Hwy 8	1	Monitoring during construction activities
7/26/2011	I-8 Island	24	Morning perimeter survey at 9:46am - 10:45am
7/26/2011	I-8 Island	7	Evening perimeter survey at 6:17pm - 6:50pm
7/26/2011	EP263B-EP267	0	Site clearance survey



**PBS Monitoring Report - Week Ending 10/15/2011**

Date	Location	Number observed	Comments
7/26/2011	EP269	0	Site clearance survey
7/26/2011	EP270	0	Monitoring construction activities
7/26/2011	EP274-EP278	0	Monitoring construction activities
7/26/2011	EP279-294	0	Monitoring construction activities
7/26/2011	EP300-EP306	0	Monitoring construction activities
7/26/2011	EP256-EP263A-2, AER Yard	0	Monitoring construction activities
7/26/2011	EP269-EP273	0	Morning perimeter survey
7/26/2011	EP269-EP273	0	Evening perimeter survey
7/26/2011	EP300-EP312	0	Monitoring construction activities
7/26/2011	EP300-EP312	0	Morning perimeter survey
7/26/2011	EP300-EP312	0	Monitoring construction activities
7/26/2011	EP300-EP312	0	Evening perimeter survey
7/25/2011	I-8 Island	21	Morning perimeter survey at 8:47am
7/25/2011	I-8 Island	20	Evening perimeter survey at 6:37am
7/25/2011	EP263B-EP267	0	Site clearance survey
7/25/2011	EP269	0	Site clearance survey
7/25/2011	EP270	0	Monitoring construction activities
7/25/2011	EP274-EP278	0	Monitoring construction activities
7/25/2011	EP279-294	0	Monitoring construction activities
7/25/2011	EP300-EP306	0	Monitoring construction activities
7/25/2011	EP256-EP263A-2, AER Yard	0	Monitoring construction activities
7/25/2011	EP269-EP273	0	Morning perimeter survey
7/25/2011	EP269-EP273	0	Evening perimeter survey
7/25/2011	EP300 & EP302	0	Monitoring construction activities
7/25/2011	EP300-EP312	0	Morning perimeter survey
7/25/2011	EP300-EP312	0	Monitoring construction activities
7/25/2011	EP300-EP312	0	Evening perimeter survey
7/25/2011	EP276	0	Monitoring construction activities
7/24/2011	I-8 Island	13	Evening perimeter survey at 6:25pm
7/24/2011	EP263B-EP267	0	Site clearance survey
7/24/2011	EP269	0	Site clearance survey
7/24/2011	EP270	0	Monitoring construction activities
7/24/2011	EP279-294	0	Monitoring construction activities
7/24/2011	EP256-EP263A-2, AER Yard	0	Monitoring construction activities
7/24/2011	EP269-EP273	0	Evening perimeter survey

**PBS Monitoring Report - Week Ending 10/15/2011**

Date	Location	Number observed	Comments
7/24/2011	EP274-EP278	0	Evening perimeter survey
7/24/2011	EP300-EP312	0	Evening perimeter survey
7/23/2011	EP263B-EP267	0	Site clearance survey
7/23/2011	EP269	0	Site clearance survey
7/23/2011	EP270	0	Monitoring construction activities
7/23/2011	EP279-294	0	Monitoring construction activities
7/23/2011	EP300-EP312	0	Monitoring construction activities
7/23/2011	EP300-EP312	0	Site clearance survey
7/23/2011	EP256-EP263A-2, AER Yard	0	Monitoring construction activities
7/23/2011	EP269-EP276	0	Morning perimeter survey
7/23/2011	EP274-EP278	0	Morning perimeter survey
7/23/2011	EP274-EP278	0	Evening perimeter survey
7/23/2011	I-8 Island	0	Morning perimeter survey
7/22/2011	I-8 Island	18	Evening perimeter survey at 6:35pm
7/22/2011	EP263B-EP267	0	Site clearance survey
7/22/2011	EP269	0	Site clearance survey
7/22/2011	EP269-EP270	0	Monitoring construction activities
7/22/2011	EP270	0	Monitoring construction activities
7/22/2011	EP300-EP312	0	Monitoring construction activities
7/22/2011	EP256-EP263A-2, AER Yard	0	Monitoring construction activities
7/22/2011	EP269-EP273	0	Morning perimeter survey
7/22/2011	EP269-EP273	0	Evening perimeter survey
7/22/2011	EP274-EP278	0	Site clearance survey
7/22/2011	EP274-EP278	0	Monitoring construction activities
7/21/2011	I-8 Island	18	Evening perimeter survey at 6:35pm
7/21/2011	EP263B-EP267	0	Site clearance survey
7/21/2011	EP269	0	Site clearance survey
7/21/2011	EP269-EP270	0	Monitoring construction activities
7/21/2011	EP270	0	Monitoring construction activities
7/21/2011	EP279-294	0	Monitoring construction activities
7/21/2011	EP300-EP312	0	Monitoring construction activities
7/21/2011	EP300-EP306	0	Site clearance survey
7/21/2011	EP256-EP263A-2, AER Yard	0	Monitoring construction activities
7/21/2011	EP269-EP273	0	Morning perimeter survey
7/21/2011	EP269-EP273	0	Evening perimeter survey

**PBS Monitoring Report - Week Ending 10/15/2011**

Date	Location	Number observed	Comments
7/21/2011	EP274-EP278	0	Morning perimeter survey
7/21/2011	EP274-EP278	0	Evening perimeter survey
7/20/2011	I-8 Island	4	Evening perimeter survey at 6:50pm
7/20/2011	EP269-EP273	0	Morning perimeter survey
7/20/2011	EP269-EP273	0	Evening perimeter survey
7/20/2011	EP263B-EP267	0	Site clearance survey
7/20/2011	EP269	0	Site clearance survey
7/20/2011	EP270	0	Monitoring construction activities
7/20/2011	EP279-294	0	Monitoring construction activities
7/20/2011	EP300-EP312	0	Monitoring construction activities
7/20/2011	EP300-EP306	0	Site clearance survey
7/20/2011	EP256-EP263A-2, AER Yard	0	Monitoring construction activities
7/20/2011	EP274-EP278	0	Morning perimeter survey
7/20/2011	EP274-EP278	0	Evening perimeter survey
7/19/2011	I-8 Island	10	Morning perimeter survey at 9:10am
7/19/2011	I-8 Island	17	Evening perimeter survey at 4:00pm - 6:40pm
7/19/2011	EP269-EP273	0	Morning perimeter survey
7/19/2011	EP269-EP273	0	Evening perimeter survey
7/19/2011	EP269	0	Site clearance survey
7/19/2011	EP270	0	Monitoring construction activities
7/19/2011	EP279-294	0	Monitoring construction activities
7/19/2011	EP300-EP312	0	Monitoring construction activities
7/19/2011	EP300-EP306	0	Site clearance survey
7/19/2011	EP256-EP263A-2, AER Yard	0	Monitoring construction activities
7/19/2011	EP274-EP278	0	Morning perimeter survey
7/19/2011	EP274-EP278	0	Evening perimeter survey
7/19/2011	EP263B-EP267	0	Site clearance survey
7/18/2011	I-8 Island	21	Evening perimeter survey at 7:10pm
7/18/2011	EP263B-EP267	0	Site clearance survey
7/18/2011	EP269	0	Site clearance survey
7/18/2011	EP270	0	Monitoring construction activities
7/18/2011	EP279-294	0	Monitoring construction activities
7/18/2011	EP300-EP312	0	Monitoring construction activities
7/18/2011	EP300-EP306	0	Site clearance survey
7/18/2011	EP256-EP263A-2, AER Yard	0	Monitoring construction activities

**PBS Monitoring Report - Week Ending 10/15/2011**

Date	Location	Number observed	Comments
7/18/2011	EP274-EP278	0	Morning perimeter survey
7/18/2011	EP274-EP278	0	Evening perimeter survey
7/18/2011	EP269-EP273	0	Site clearance survey
7/17/2011	I-8 Island	17	Evening perimeter survey at 5:55pm - 6:25
7/17/2011	EP263B-EP267	0	Site clearance survey
7/17/2011	EP269	0	Site clearance survey
7/17/2011	EP270	0	Monitoring construction activities
7/17/2011	EP300-EP312	0	Monitoring construction activities
7/17/2011	EP256-EP263A-2, AER Yard	0	Monitoring construction activities
7/17/2011	EP274-EP278	0	Evening perimeter survey
7/17/2011	EP279-EP294	0	Site clearance survey
7/17/2011	EP269-EP273	0	Site clearance survey
7/16/2011	I-8 Island	1	Morning perimeter survey at 8:35am
7/16/2011	EP263B-EP267	0	Site clearance survey
7/16/2011	EP269	0	Site clearance survey
7/16/2011	EP270	0	Monitoring construction activities
7/16/2011	EP300-EP306	0	Monitoring construction activities
7/16/2011	EP300-EP312	0	Monitoring construction activities
7/16/2011	EP256-EP263A-2, AER Yard	0	Monitoring construction activities
7/16/2011	EP274-EP278	0	Morning perimeter survey
7/16/2011	EP279-EP294	0	Morning perimeter survey
7/16/2011	EP279-EP294	0	Site clearance survey
7/16/2011	EP279-EP294	0	Monitoring construction activities
7/16/2011	EP269-EP273	0	Site clearance survey
7/15/2011	EP273-1	1	Evening perimeter survey at 4:30pm
7/15/2011	I-8 Island	12	Evening perimeter survey at 6:35pm - 7:00pm
7/15/2011	EP263B-EP267	0	Site clearance survey
7/15/2011	EP269	0	Site clearance survey
7/15/2011	EP270	0	Monitoring construction activities
7/15/2011	EP279-294	0	Monitoring construction activities
7/15/2011	EP300-EP306	0	Monitoring construction activities
7/15/2011	EP300-EP312	0	Monitoring construction activities
7/15/2011	EP256-EP263A-2, AER Yard	0	Site clearance survey
7/15/2011	EP256-EP263A-2, AER Yard	0	Monitoring construction activities
7/15/2011	EP256-EP263A-2, AER Yard	0	Evening perimeter survey

**PBS Monitoring Report - Week Ending 10/15/2011**

Date	Location	Number observed	Comments
7/15/2011	EP269-EP273	0	Site clearance survey
7/15/2011	EP274-EP278	0	Morning perimeter survey
7/15/2011	EP274-EP278	0	Evening perimeter survey
7/14/2011	I-8 Island	3	Evening perimeter survey at 4:10pm
7/14/2011	I-8 Island		7:15am - 9:30am PBHS were at above point
7/14/2011	EP263B-EP267	0	Site clearance survey
7/14/2011	EP269	0	Site clearance survey
7/14/2011	EP270	0	Monitoring construction activities
7/14/2011	EP279-294	0	Monitoring construction activities
7/14/2011	EP300-EP306	0	Monitoring construction activities
7/14/2011	EP300-EP312	0	Monitoring construction activities
7/14/2011	EP256-EP263A-2, AER Yard	0	Morning perimeter survey
7/14/2011	EP256-EP263A-2, AER Yard	0	Monitoring construction activities
7/14/2011	EP256-EP263A-2, AER Yard	0	Evening perimeter survey
7/14/2011	EP274-EP278	0	Morning perimeter survey
7/14/2011	EP274-EP278	0	Evening perimeter survey
7/14/2011	EP269-EP273	0	Site clearance survey
7/13/2011	I-8 Island	21	Evening perimeter survey at 4:40pm
7/13/2011	EP263B-EP267	0	Site clearance survey
7/13/2011	EP269	0	Site clearance survey
7/13/2011	EP270	0	Monitoring construction activities
7/13/2011	EP279-294	0	Monitoring construction activities
7/13/2011	EP300-EP306	0	Monitoring construction activities
7/13/2011	EP300-EP312	0	Monitoring construction activities
7/13/2011	EP256-EP263A-2, AER Yard	0	Morning perimeter survey
7/13/2011	EP256-EP263A-2, AER Yard	0	Evening perimeter survey
7/13/2011	EP269-EP273	0	Site clearance survey
7/12/2011	EP256-EP263A-2, AER Yard	15	Monitoring during construction activities @ 7:40am - 11:00am
7/12/2011	I-8 Island	17	Evening perimeter survey at 4:00pm
7/12/2011	EP263B-EP267	0	Site clearance survey
7/12/2011	EP269	0	Site clearance survey
7/12/2011	EP270	0	Monitoring construction activities
7/12/2011	EP279-294	0	Monitoring construction activities
7/12/2011	EP300-EP306	0	Monitoring construction activities
7/12/2011	EP300-EP312	0	Monitoring construction activities

**PBS Monitoring Report - Week Ending 10/15/2011**

Date	Location	Number observed	Comments
7/12/2011	EP274-EP278	0	Morning perimeter survey
7/12/2011	EP274-EP278	0	Evening perimeter survey
7/12/2011	EP269-EP273	0	Site clearance survey
7/11/2011	I-8 Island	29	Evening perimeter survey at 4:40pm
7/11/2011	EP263B-EP267	0	Site clearance survey
7/11/2011	EP269	0	Site clearance survey
7/11/2011	EP270	0	Monitoring construction activities
7/11/2011	EP279-294	0	Monitoring construction activities
7/11/2011	EP300-EP306	0	Monitoring construction activities
7/11/2011	EP300-EP312	0	Monitoring construction activities
7/11/2011	EP256-EP263A-2, AER Yard	0	Morning perimeter survey
7/11/2011	EP256-EP263A-2, AER Yard	0	Evening perimeter survey
7/11/2011	EP269-EP273	0	Site clearance survey
7/11/2011	EP274-EP278	0	Morning perimeter survey
7/11/2011	EP274-EP278	0	Evening perimeter survey
7/10/2011	I-8 Island	8	Perimeter survey
7/10/2011	I-8 Island	20	Monitoring construction activities
7/10/2011	EP269	0	Site clearance survey
7/10/2011	EP270	0	Monitoring construction activities
7/10/2011	EP279-294	0	Monitoring construction activities
7/10/2011	EP300-EP312	0	Monitoring construction activities
7/10/2011	EP256-EP263A-2, AER Yard	0	Evening perimeter survey
7/10/2011	EP274-EP278, EP265-EP267	0	Site clearance survey
7/9/2011	EP263A-2	11	Evening perimeter survey
7/9/2011	EP263B-EP267	0	Site clearance survey
7/9/2011	EP269-EP274	0	Monitoring construction activities
7/9/2011	EP279-294	0	Monitoring construction activities
7/9/2011	EP300-EP307	0	Monitoring construction activities
7/9/2011	EP256-EP263A-2, AER Yard	0	Monitoring construction activities
7/9/2011	EP269-EP273	0	Site clearance survey
7/9/2011	EP274-EP278	0	Morning perimeter survey
7/9/2011	EP310	0	Monitoring construction activities
7/8/2011	EP263B-EP267	0	Site clearance survey
7/8/2011	EP300-EP312	0	Monitoring construction activities
7/8/2011	EP256-EP263A-2, AER Yard	0	Monitoring construction activities

**PBS Monitoring Report - Week Ending 10/15/2011**

Date	Location	Number observed	Comments
7/8/2011	EP269-EP273	0	Site clearance survey
7/8/2011	EP274-EP278	0	Morning perimeter survey
7/8/2011	EP274-EP278	0	Evening perimeter survey
7/8/2011	EP303	0	Monitoring construction activities
7/8/2011	EP279-EP294	0	Monitoring construction activities
7/7/2011	I-8 Island	8	Evening perimeter survey at 7:00pm
7/7/2011	EP263B-EP267	0	Site clearance survey
7/7/2011	EP269-EP273	0	Monitoring construction activities
7/7/2011	EP300-EP312	0	Monitoring construction activities
7/7/2011	EP300-EP307	0	Monitoring construction activities
7/7/2011	EP256-EP263A-2, AER Yard	0	Monitoring construction activities
7/7/2011	EP269-EP273	0	Site clearance survey
7/7/2011	EP274-EP278	0	Morning perimeter survey
7/7/2011	EP274-EP278	0	Evening perimeter survey
7/7/2011	EP303 & EP304	0	Monitoring construction activities
7/7/2011	EP306-EP312	0	Site clearance survey
7/6/2011	EP263A-2	2	Evening perimeter survey
7/6/2011	EP263B-EP267	0	Site clearance survey
7/6/2011	EP269-EP272	0	Monitoring construction activities
7/6/2011	EP300-EP312	0	Monitoring construction activities
7/6/2011	EP300-EP307	0	Monitoring construction activities
7/6/2011	EP303	0	Site clearance survey
7/6/2011	EP256-EP263A-2, AER Yard	0	Monitoring construction activities
7/6/2011	EP274-EP278	0	Morning perimeter survey
7/6/2011	EP274-EP278	0	Evening perimeter survey
7/6/2011	EP305 to EP304	0	Monitoring construction activities
7/6/2011	I-8 Island	0	Monitoring construction activities
7/6/2011	EP269-EP273	0	Site clearance survey
7/5/2011	EP270	14	Morning perimeter survey at 6:30am - 10:00am
7/5/2011	EP270	9	Evening perimeter survey at 5:00pm
7/5/2011	I-8 Island	7	Evening perimeter survey at 6:20pm
7/5/2011	EP269-EP273	0	Morning perimeter survey
7/5/2011	EP269-EP273	0	Evening perimeter survey
7/5/2011	EP263B-EP267	0	Site clearance survey
7/5/2011	EP269-EP271	0	Monitoring construction activities



**PBS Monitoring Report - Week Ending 10/15/2011**

<b>Date</b>	<b>Location</b>	<b>Number observed</b>	<b>Comments</b>
7/5/2011	EP300-EP312	0	Monitoring construction activities
7/5/2011	EP256-EP263A-2, AER Yard	0	Monitoring construction activities
7/5/2011	EP274-EP278	0	Morning perimeter survey
7/5/2011	EP274-EP278	0	Evening perimeter survey
7/5/2011	EP307 to EP305	0	Monitoring construction activities
7/5/2011	I-8 Island	0	Site clearance survey
7/4/2011	EP270	9	Perimeter survey
7/4/2011	EP263B-EP267	0	Site clearance survey
7/4/2011	EP300-EP312	0	Monitoring construction activities
7/4/2011	EP256-EP263A-2, AER Yard	0	Evening perimeter survey
7/4/2011	EP269-EP273	0	Site clearance survey
7/4/2011	EP274-EP278	0	Evening perimeter survey
7/4/2011	I-8 Island	0	Site clearance survey
7/2/2011	EP263B-EP267	0	Site clearance survey
7/2/2011	EP256-EP263A-2, AER Yard	0	Monitoring construction activities
7/2/2011	EP269-EP273	0	Site clearance survey
7/2/2011	EP274-EP278	0	Morning perimeter survey
7/2/2011	I-8 Island	0	Site clearance survey
7/1/2011	EP263B-EP267	0	Site clearance survey
7/1/2011	EP300-EP312	0	Monitoring construction activities
7/1/2011	EP256-EP263A-2, AER Yard	0	Monitoring construction activities
7/1/2011	EP269-EP273	0	Site clearance survey
7/1/2011	EP274-EP278	0	Morning perimeter survey
7/1/2011	EP274-EP278	0	Evening perimeter survey
7/1/2011	I-8 Island	0	Site clearance survey
6/30/2011	EP300-EP312	0	Monitoring construction activities
6/29/2011	EP310-EP312	0	Monitoring construction activities
4/15/2011	EP210, EP211, EP213-EP215, EP217-EP219	0	Monitoring construction activities
3/26/2011	EP105	0	Site clearance survey

**Flat Tailed Horned Lizard Counts - Week Ending 10/15/2011**

Date	Location	Observed		Injured		Relocated		Dead	
		Day	Night	Day	Night	Day	Night	Day	Night
	Post RCLMP*								
10/13/2011	AR to EP354							1	
9/20/2011	AR btwn EP357 and EP358							1	
9/19/2011	AR btwn EP352 and EP353	1							
9/12/2011	EP325					1			
9/9/2011	AR to EP363	1							
9/6/2011	AR to EP360/361					1			
9/6/2011	EP360					2			
9/6/2011	EP359					1			
9/3/2011	SWPL AR to EP324					1			
9/3/2011	SWPL AR to EP342					1			
9/3/2011	SWPL AR to EP345							1	
9/3/2011	SWPL AR to EP344 and EP345					1			
8/31/2011	EP324					1			
8/31/2011	SWPL AR to EP325-2					1			
8/30/2011	SWPL AR to EP346 and EP347					1			
8/29/2011	SWPL AR to EP353 and EP354							1	
8/29/2011	SWPL AR to EP324							1	
8/27/2011	EP349					1			
8/25/2011	EP360							1	
8/25/2011	Btwn EP320/321					1			
8/24/2011	SWPL AR near EP346					1			
8/23/2011	EP349					1			
8/21/2011	SWPL AR btwn EP344/345					1			
8/21/2011	SWPL AR to EP345							1	
8/19/2011	SWPL AR to EP339					1			
8/20/2011	SWPL AR to IV Sub							1	
8/20/2011	SWPL AR btwn EP346/347					1			
8/19/2011	EP338/339 Pullsite					1			
8/19/2011	EP355/356 Pullsite					1			
8/18/2011	EP347					1			
8/18/2011	SWPL AR to EP353							1	
8/11/2011	SWPL AR by EP348					1			
8/11/2011	EP348/EP349 Pullsite					1			
8/10/2011	EP347					1			
8/8/2011	SWPL AR to EP351					2			
8/6/2011	BLM AR near EP327							1	
8/1/2011	IV Substation Yard	1							
8/1/2011	EP325					1			
8/1/2011	AR to EP345					1			
7/30/2011	EP322					1			
7/28/2011	EP355/EP356 Pullsite					1			
7/27/2011	Near EP316-2	1							
7/26/2011	SWPL AR to EP344	1							

**Flat Tailed Horned Lizard Counts - Week Ending 10/15/2011**

Date	Location	Observed		Injured		Relocated		Dead	
		Day	Night	Day	Night	Day	Night	Day	Night
7/26/2011	EP347					1			
	Post RCLMP*								
7/26/2011	AR to IV Sub					1			
7/25/2011	AR to IV Sub					1			
7/25/2011	AR to IV Sub					1			
7/25/2011	AR to IV Sub					1			
7/22/2011	AR to IV Sub					1			
7/21/2011	EP360					1			
7/21/2011	AR to EP326					1			
7/19/2011	SWPL AR to IV Sub	1							
7/19/2011	EP353					1			
7/19/2011	AR to Dunaway CY					1			
7/18/2011	EP318					1			
7/17/2011	EP355					1			
7/15/2011	EP359	1							
7/15/2011	EP352	1							
7/15/2011	EP350	1							
7/14/2011	Spur Rd to EP355							1	
7/14/2011	EP322	1							
7/13/2011	EP357	1							
7/12/2011	EP344	1							
7/12/2011	SWPL AR btwn EP348/345							1	
<b>TOTAL POST RCLMP</b>		<b>12</b>	<b>0</b>	<b>0</b>	<b>0</b>	<b>42</b>	<b>0</b>	<b>12</b>	
<b>Prior to RCLMP</b>		<b>Day</b>		<b>Day</b>		<b>Day</b>		<b>Day</b>	
7/11/2011	AR to EP352					2			
7/11/2011	AR to EP345					2			
7/10/2011	EP358					1			
7/10/2011	SWPL AR to EP354					2			
7/9/2011	AR to EP330	1							
7/8/2011	Spur Rd. to EP352	1							
7/7/2011	EP324					1			
7/7/2011	EP355					1			
7/6/2011	SWPL AR btwn EP362/363							1	
7/5/2011	EP354					1			
7/1/2011	AR to EP353	1							
6/30/2011	AR between EP310/311							1	
6/30/2011	EP358	1							
6/30/2011	EP360	1							
6/30/2011	AR to EP312							1	
6/30/2011	EP360							1	
6/27/2011	EP350					1			
6/27/2011	SWPL AR to IV Substation	2							
6/26/2011	IV Substation					1			
6/25/2011	SWPL AR to EP361	1							

**Flat Tailed Horned Lizard Counts - Week Ending 10/15/2011**

Date	Location	Observed	Injured	Relocated	Dead
6/24/2011	EP359			1	
6/23/2011	SWPL AR to EP360			2	
6/22/2011	SWPL AR to EP355			1	
6/20/2011	EP356	2			
6/20/2011	SWPL AR to EP359	1			
6/20/2011	Near EP356	2			
6/20/2011	AR between EP358/357				1
6/18/2011	AR to Dunaway CY				1
6/17/2011	Near EP322	1			
6/7/2011	Near EP355	1			
6/7/2011	EP361			1	
6/7/2011	AR btwn EP343/EP344				1
6/7/2011	AR between EP324/325				1
6/6/2011	SWPL AR btwn EP344/EP345			1	
6/3/2011	EP359			1	
6/3/2011	SWPL AR EP362			1	
6/2/2011	AR to EP358			1	
6/2/2011	SWPL AR to EP316-2				1
6/2/2011	AR east of EP325				1
6/1/2011	SWPL AR btwn EP319/EP320			1	
6/1/2011	SWPL AR to EP318			1	
5/31/2011	SWPL AR btwn EP359/EP360			1	
5/31/2011	SWPL AR to EP320			1	
5/31/2011	EP360				1
5/27/2011	EP357			1	
5/26/2011	SWPL AR to EP359			1	
5/25/2011	Spur Rd to EP321			1	
5/23/2011	EP323			1	
5/21/2011	EP324			1	
5/20/2011	IV CY			1	
5/20/2011	AR to EP362			1	
5/20/2011	AR btwn EP324/EP325			1	
5/20/2011	SWPL AR btwn EP326/EP327			1	
5/20/2011	IV Substation			3	
5/19/2011	IV Substation			5	
5/19/2011	EP324			1	
5/18/2011	IV Substation Yard			1	
5/18/2011	IV Substation Yard				1
5/17/2011	AR to IV Substation				1
5/16/2011	IV Substation Yard			1	
5/13/2011	SWPL AR Near EP362-1	1			
5/12/2011	AR to EP355			1	
5/11/2011	EP360	1			
5/11/2011	Dunaway CY	3			

Flat Tailed Horned Lizard Counts - Week Ending 10/15/2011					
Date	Location	Observed	Injured	Relocated	Dead
5/11/2011	Dunaway Yard			4	
5/10/2011	EP322	1			
5/10/2011	AR to Dunaway CY	1			
5/9/2011	Dunaway Yard			4	
5/7/2011	EP322	1			
5/7/2011	Spur Road to EP344	1			
5/7/2011	Dunaway Yard			1	
5/6/2011	AR to EP321-1	1			
5/5/2011	AR to EP321-1	1			
5/5/2011	AR to Dunaway CY	2			
5/5/2011	Dunaway Yard			2	
5/4/2011	AR btwn EP343/EP344			1	
5/3/2011	SWPL AR btwn EP320/EP321	1			
4/27/2011	AR to EP322	2			
4/26/2011	EP322	1			
4/25/2011	Plaster City CY	1			
4/20/2011	Plaster City			1	
4/18/2011	Plaster City			1	
4/14/2011	AR to IV Substation	1			
4/2/2011	Dunaway CY	1			
<b>TOTAL PRIOR TO RCLMP</b>		<b>35</b>	<b>0</b>	<b>60</b>	<b>13</b>
<b>YTD</b>		<b>47</b>	<b>0</b>	<b>102</b>	<b>25</b>

\*RCLMP refers to the Revised Construction Lighting Mitigation Plan

**Raven Control Monitoring Report - Week Ending 10/15/2011**

Date	Location	Number of Ravens observed	Raven Activity					FTHL observed
			Nesting	Flying	Perching	Roosting	Scavaging	
10/15/2011	S2 Yard	2					2	no
10/15/2011	Dunaway CY	1				1		no
10/15/2011	EP315	2					2	no
10/15/2011	EP301	3			3			no
10/14/2011	Fromm CY	3				3		no
10/14/2011	EP305	2		2				no
10/14/2011	EP301	3			3			no
10/13/2011	S2 Yard	2					2	no
10/13/2011	Dunaway CY	5					5	no
10/13/2011	Fromm CY	1					1	no
10/13/2011	EP354-EP363	2			2			no
10/13/2011	EP301	4		4				no
10/12/2011	EP300-EP301	2		2				no
10/11/2011	Plaster City Yard	2			2			no
10/11/2011	IV Substation	2					2	no
10/10/2011	Fromm CY	2				2		no
10/10/2011	EP359-EP360	2		2				no
10/10/2011	EP355-EP363	2		2				no
10/10/2011	EP301	3		3				no
10/9/2011	S2 Yard	3					3	no
10/9/2011	EP300	6		6				no
10/8/2011	EP357	2			2			no
10/8/2011	EP306	3					3	no
10/7/2011	Dunaway CY	1		1				no
10/7/2011	EP291-EP301	3		3				no
10/6/2011	Fromm CY	2					2	no
10/5/2011	Dunaway CY	2		2				no
10/5/2011	EP303-2	2		2				no
10/4/2011	EP310 & EP311	2		2				no
10/4/2011	EP301	3					3	no
10/4/2011	EP293	2		2				no
10/3/2011	S2 Yard	2					2	no
10/3/2011	Dunaway CY	2			2			no
10/2/2011	EP356-EP363	2		1	1			no
10/1/2011	Plaster City Yard	2					2	no
10/1/2011	EP360	2			2			no
9/30/2011	S2 Yard	2					2	no
9/30/2011	EP355	1		1				no
9/30/2011	EP314	2		2				no
9/30/2011	EP301	2		1	1			no
9/29/2011	EP291/EP292 Pullsite	1			1			no
9/28/2011	EP361	1			1			no
9/27/2011	EP315	2		1	1			no
9/27/2011	EP309	1		1				no
9/27/2011	EP301 & EP304	4		3	1			no

Date	Location	Number of Ravens observed	Raven Activity					FTHL observed
			Nesting	Flying	Perching	Roosting	Scavaging	
9/27/2011	EP290	1			1			no
9/26/2011	EP362	2			2			no
9/26/2011	Fromm CY	1				1		no
9/25/2011	No ravens observed							
9/24/2011	Plaster City Yard	2					2	no
9/24/2011	EP317	1		1				no
9/24/2011	EP309	1		1				no
9/23/2011	EP362	4			4			no
9/23/2011	EP303	2		2				no
9/22/2011	Fromm CY	1				1		no
9/22/2011	EP303	2		2				no
9/22/2011	EP301	2		2				no
9/22/2011	EP295-EP322	3		3				no
9/21/2011	S2 Yard	3			3			no
9/21/2011	Fromm CY	1					1	no
9/21/2011	EP303	1		1				no
9/20/2011	S2 Yard	2			2			no
9/20/2011	Fromm CY	1				1		no
9/19/2011	S2 Yard	3			3			no
9/19/2011	EP304, EP307, EP309	1		1				no
9/18/2011	S2 Yard	3				3		no
9/18/2011	EP281	1		1				no
9/17/2011	S2 Yard	3					3	no
9/17/2011	EP362	1			1			no
9/17/2011	Fromm CY	3				3		no
9/16/2011	EP363	2			2			no
9/16/2011	Fromm CY	1					1	no
9/16/2011	EP304	2		2				no
9/16/2011	EP290	1		1				no
9/15/2011	S2 Yard	4			4			no
9/15/2011	Fromm CY	3					3	no
9/15/2011	EP296	1		1				no
9/15/2011	EP306	2					2	no
9/15/2011	EP304	1		1				no
9/15/2011	EP301	2		2				no
9/14/2011	Plaster City Yard	1			1			no
9/14/2011	EP361	2			2			no
9/14/2011	Fromm CY	1				1		no
9/14/2011	EP308	1					1	no
9/14/2011	EP301	5		4	1			no
9/14/2011	EP292	3		3				no
9/13/2011	S2 Yard	10			10			no
9/13/2011	EP348	3		3				no
9/13/2011	EP345	2		2				no
9/13/2011	EP326	1					1	no
9/13/2011	EP325	2		2				no



Date	Location	Number of Ravens observed	Raven Activity					FTHL observed
			Nesting	Flying	Perching	Roosting	Scavaging	
9/13/2011	EP326	1		1				no
9/13/2011	EP304	7		7				no
9/13/2011	EP291	7		7				no
9/12/2011	S2 Yard	3			3			no
9/12/2011	EP350	1		1				no
9/12/2011	EP304	1		1				no
9/12/2011	EP301	1		1				no
9/11/2011	S2 Yard	2				2		no
9/10/2011	S2 Yard	2					2	no
9/9/2011	EP304	1			1			no
9/8/2011	S2 Yard	3					3	no
9/7/2011	S2 Yard	3					3	no
9/6/2011	No ravens observed							
9/5/2011	No ravens observed							
9/4/2011	No ravens observed							
9/3/2011	No ravens observed							
9/2/2011	EP348	1		1				no
9/2/2011	S2 Yard	1		1				no
9/2/2011	EP303	1		1				no
9/2/2011	EP363	2		2				1 at IV Sub
9/1/2011	EP303	2					2	no
9/1/2011	EP293	1					1	no
9/1/2011	EP304	2					2	no
8/31/2011	S2 Yard	1		1				no
8/31/2011	EP308	1		1				no
8/31/2011	EP305-3	2					2	no
8/31/2011	EP303	2		2				no
8/30/2011	EP303	1		1				no
8/29/2011	S2 Yard	1		1				no
8/29/2011	EP303	1		1				no
8/28/2011	No ravens observed							
8/27/2011	EP305	3			3			no
8/26/2011	EP301	2		2				no
8/25/2011	S2 Yard	2					2	no
8/25/2011	EP301	2		2				no
8/24/2011	S2 Yard	3				3		no
8/23/2011	EP292-1	3		3				no
8/22/2011	No ravens observed							
8/21/2011	No ravens observed							
8/20/2011	S2 Yard	2				2		no
8/20/2011	EP312	2		2				no
8/20/2011	S2 Yard	2					2	no
8/20/2011	EP312	2		2				no
8/19/2011	EP307	2			2			no
8/19/2011	EP296	1		1				no
8/18/2011	S2 Yard	2				1	1	no

Date	Location	Number of Ravens observed	Raven Activity					FTHL observed
			Nesting	Flying	Perching	Roosting	Scavaging	
8/18/2011	EP301	Flock		x				no
8/17/2011	S2 Yard	2				1	1	no
8/17/2011	EP301	3			3			no
8/16/2011	S2 Yard	1					1	no
8/16/2011	EP301	1		1				no
8/15/2011	No ravens observed							
8/14/2011	No ravens observed							
8/13/2011	S2 Yard	2					2	no
8/12/2011	IV Substation	2				2		no
8/12/2011	S2 Yard	3				3	3	no
8/11/2011	EP294	4			4			no
8/11/2011	S2 Yard	3				3	3	no
8/10/2011	S2 Yard	3				2	1	no
8/9/2011	S2 Yard	not specified						no
8/8/2011	EP294	2			2			no
8/8/2011	S2 Yard	1						no
8/7/2011	No ravens observed							
8/6/2011	S2 Yard	1						no
8/5/2011	EP301	3		3				no
8/4/2011	S2 Yard	not specified						no
8/3/2011	S2 Yard	2		2				no
8/3/2011	S2 Yard	1						no
8/2/2011	S2 Yard	3					3	no
8/1/2011	EP314	not specified		x				no
7/31/2011	No ravens observed							
7/30/2011	EP314	3		2			1	no
7/30/2011	S2 Yard	1					1	no
7/29/2011	S2 Yard	1						no
7/28/2011	EP319	4	1	2	1			no
7/28/2011	S2 Yard	not specified						no
7/27/2011	S2 Yard	not specified						no
7/26/2011	No ravens observed							
7/25/2011	EP290	1			1			no
7/24/2011	No ravens observed							
7/23/2011	No ravens observed							
7/22/2011	EP290	2		1	1			no
7/21/2011	S2 Yard	1		1				no
7/20/2011	Ocotillo, CA	5						no
7/19/2011	Ocotillo, CA	1						no
7/18/2011	CP40-2	not specified						no
7/18/2011	CP41-2	not specified						no
7/18/2011	CP42-1	not specified						no
7/17/2011	No ravens observed							
7/16/2011	CP42-1	not specified						no
7/15/2011	No ravens observed							
7/14/2011	EP357	not specified						no

Date	Location	Number of Ravens observed	Raven Activity					FTHL observed
			Nesting	Flying	Perching	Roosting	Scavaging	
7/14/2011	EP358	not specified						no
7/14/2011	EP359	not specified						no
7/14/2011	Plaster City Yard	2		2				no
7/13/2011	EP313-EP314 PS	not specified						no
7/13/2011	S2 Yard	3					3	no
7/12/2011	CP18-1	not specified						no
7/12/2011	CP19-1	not specified						no
7/12/2011	CP22-1	not specified						no
7/11/2011	EP304-EP314	not specified						no
7/10/2011	No ravens observed							
7/9/2011	EP351	not specified						no
7/9/2011	EP353	not specified						no
7/9/2011	EP354	not specified						no
7/9/2011	EP355	not specified						no
7/9/2011	not specified	not specified						no
7/9/2011	S2 Yard	3					3	no
7/8/2011	EP303	2			1		1	no
7/8/2011	EP303	1		1				no
7/8/2011	S2 Yard	3					3	no
7/1/11 - 7/7/11	No ravens observed							
6/30/2011	EP300	3		3				no
6/21/11 - 6/29/11	No ravens observed							
6/20/2011	S2 Yard	2					2	no
6/1/11 - 6/19/11	No ravens observed							
5/1/11 - 5/31/11	No ravens observed							
4/22/11 - 4/30/11	No ravens observed							
4/21/2011	EP341	1	1					no
4/1/11 - 4/20/11	No ravens observed							
3/1/11 - 3/31/11	No ravens observed							
2/1/11 - 2/28/11	No ravens observed							
1/21/11 - 1/31/11	No ravens observed							
1/21/2011	Rough Acres Yard	not specified						no