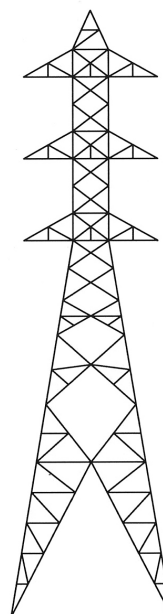
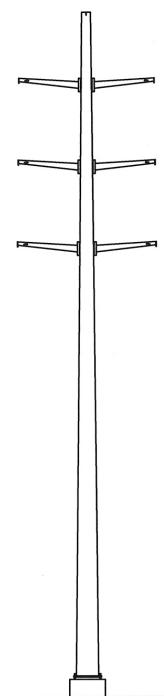


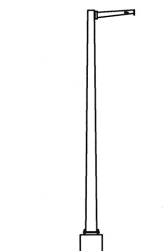
PROPOSED 220 KV TOWER  
N/O EL TORO ROAD



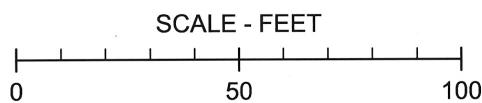
PROPOSED 220 KV TOWERS  
AT 66 KV CROSSING



PROPOSED DC 220 KV TSP'S  
AT VIEJO



PROPOSED SC 220 KV TSP'S  
WEST LINE UNDERCROSSING



## Viejo System Project

Figure 5

**Towers and Poles Proposed  
for Viejo Substation**

**Aspen**  
Environmental Group