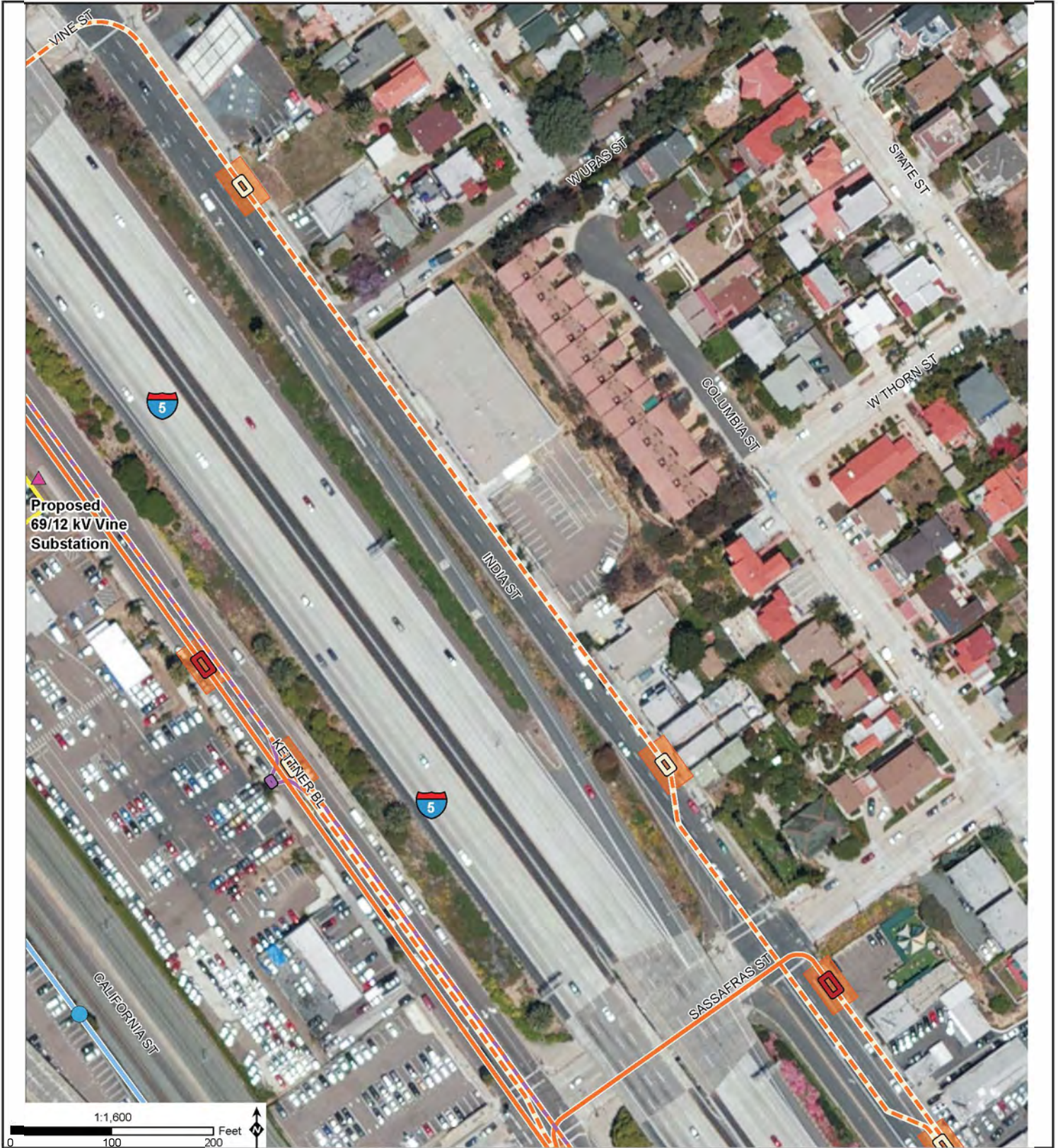


Vine Substation Project  
B.1 PROJECT DESCRIPTION



1:1,600  
0 100 200 Feet

Source: SDG&E, 2015f.

- |  |                                      |   |
|--|--------------------------------------|---|
| Proposed Vine 69/12 kV Substation              | Existing Pole                        | Existing 69 kV Overhead                         |
| Existing Kettner Substation                    | Install New TSP                      | Existing 69 kV Overhead to be Removed           |
| Transmission Work Area                         | Replace Existing Pole with TSP       | Proposed 69 kV Overhead                         |
| Jack-and-Bore Work Area                        | Remove Existing Pole                 | Existing 12 kV Duct Bank                        |
| Existing 12 kV Distribution Vault              | Remove Existing Stub Guy Pole        | Proposed 12 kV Underground                      |
| Proposed 12 kV Distribution Vault              | Potential AT&T Interconnection Point | Proposed Optional 12 kV Realignment             |
| Proposed Optional 12 kV Distribution Vault     | Proposed Capacitor                   | Proposed 12 kV and Telecommunications Duct Bank |
| Proposed Telecommunication Handhole            | Proposed Switch                      | Proposed Telecommunications Duct Bank           |
| Proposed 12 kV Distribution Pull Site          |                                      |   |
| Proposed Optional 12 kV Distribution Pull Site |                                      |   |

Note: Underground alignments area preliminary and will not be finalized until final engineering is complete.



**Figure B.1-3b: Detailed Project Components**