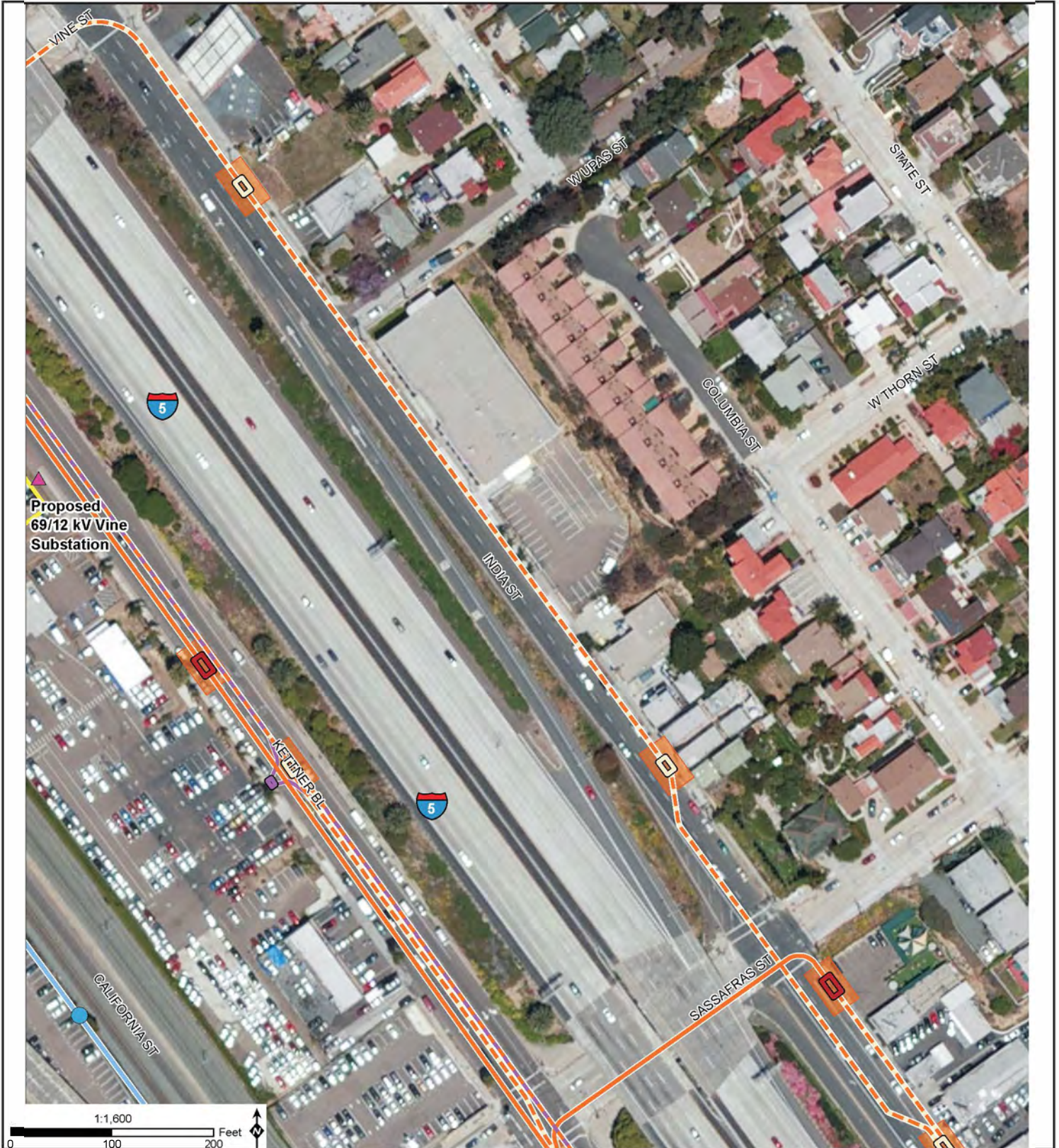


Vine Substation Project
B.1 PROJECT DESCRIPTION



Source: SDG&E, 2015f.

- | | | |
|--|--------------------------------------|---|
| Proposed Vine 69/12 kV Substation | Existing Pole | Existing 69 kV Overhead |
| Existing Kettner Substation | Install New TSP | Existing 69 kV Overhead to be Removed |
| Transmission Work Area | Replace Existing Pole with TSP | Proposed 69 kV Overhead |
| Jack-and-Bore Work Area | Remove Existing Pole | Existing 12 kV Duct Bank |
| Existing 12 kV Distribution Vault | Remove Existing Stub Guy Pole | Proposed 12 kV Underground |
| Proposed 12 kV Distribution Vault | Potential AT&T Interconnection Point | Proposed Optional 12 kV Realignment |
| Proposed Optional 12 kV Distribution Vault | Proposed Capacitor | Proposed 12 kV and Telecommunications Duct Bank |
| Proposed Telecommunication Handhole | Proposed Switch | Proposed Telecommunications Duct Bank |
| Proposed 12 kV Distribution Pull Site | | |
| Proposed Optional 12 kV Distribution Pull Site | | |

Note: Underground alignments area preliminary and will not be finalized until final engineering is complete.



Figure B.1-3b: Detailed Project Components