

## D.15 Recreation

This section describes the affected environment for Recreation in Section D.15.1 and presents the relevant regulations and standards in Section D.15.2. Sections D.15.3 through D.15.5 describe the impacts of the Proposed Project and the alternatives. Section D.15.6 presents the mitigation measures and mitigation monitoring requirements, and Section D.15.7 lists references cited.

A recreation area is any site or facility that is used by the public for recreational activities. Recreation areas may include: national, State, county, or city parks; refuges or preserves; open space; cultural centers or museums; campgrounds; significant ecological areas; special recreation management areas, areas of critical environmental concern (ACEC);<sup>1</sup> or private recreational sites such as golf courses.

### D.15.1 Environmental Setting / Affected Environment

#### D.15.1.1 Regional Setting and Approach to Data Collection

The Proposed Project and alternatives are located within or pass adjacent to recreation areas under the jurisdiction of the Bureau of Land Management (BLM), USDA Forest Service (USFS), California Department of Parks and Recreation, Caltrans, San Bernardino and Riverside Counties, and several cities. Field data were collected to identify recreation along the Proposed Project and alternatives. The locations of these recreation areas are shown in Figures D.15-1a through D.15-1k. These provide the locations of recreation by Segment on a larger scale. The following discussion describes the identified recreation facilities within 0.25 miles of the Proposed Project route. Recreation areas located outside of this 0.5 miles wide corridor are identified for orientation purposes in the environmental setting sections, but are not considered in the impact assessment.

#### D.15.1.2 Environmental Setting by Segment

The project study area includes the cities of Banning, Beaumont, Calimesa, Colton, Grand Terrace, Loma Linda, Palm Springs, Rancho Cucamonga, Redlands, San Bernardino, and Yucaipa, and unincorporated areas of Riverside and San Bernardino Counties. The Proposed Project component in the City of Rancho Cucamonga is limited to improvements within the Mechanical Electrical Equipment Room (MEER) at Etiwanda Substation. The extent of this work within an existing facility would not have the potential to affect recreational resources in the City of Rancho Cucamonga; therefore, recreation areas within the City of Rancho Cucamonga are not discussed.

Figures D.15-1a through D.15-1k show the locations of existing park and recreation areas. Table D.15-1 provides details for each recreation resource, including the type of resource, amenities, and location relative to the Proposed Project. Some of these resources are described further in Sections D.15.1.2.1 through D.15.1.2.6.

---

<sup>1</sup> ACEC or “Areas of Critical Environmental Concern” are areas within the public lands where special management attention is required (when such areas are developed or used or where no development is required) to protect and prevent irreparable damage to historic, cultural, or scenic values, fish and wildlife resources or other natural systems or processes, or to protect life and safety from natural hazards (FLPMA Section 103 (a), 1976).

**Table D.15-1. Recreational Resources Within the Project Study Area**

No.	Name	Type	Area of Impact	Managing Entity	Location	Amenities	Distance from Proposed Project	Segment
1	Rancho Mediterranean Park	Park	1%	Private	700 East Washington Street (Sorrento Drive), City of Colton	Pool, open green space, community center	Within 1/4 mile of ROW	2
2	Bike Lanes (on street)	Trail/bike	118 linear feet	City of Grand Terrace	Barton Road	Biking (on street)	Within 1/4 mile of ROW	2
3	Mt. Vernon Avenue Bike Lane	Trail/bike	—	City of Grand Terrace	Mt. Vernon Avenue	Biking	Within 1/4 mile of ROW	2
4	Grand Terrace Senior Center Park	Park	—	City of Grand Terrace	22627 Grand Terrace Road	Walking, arts/crafts, classes	Within 1/4 mile of ROW, within 500 feet of staging yards	2
5	Santa Ana River Trail	Trail/bike	—	City of San Bernardino	Santa Ana River Trail System	Trail	Adjacent to the corridor	1
6	San Bernardino Avenue Bike Trail	Trail/bike	—	City of San Bernardino	San Bernardino Avenue	Bike Lane	Within 1/4 mile of ROW	1
7	Barton Road Class II Bike Lane	Trail/bike	150 linear feet	City of Loma Linda	Barton Road	Biking	Within 1/4 mile of ROW	2
8	Sun Park	Park	—	City of Loma Linda	Sun Avenue	Picnic area	Within 1/4 mile of ROW, within 500 feet of subtransmission	1
9	Cottonwood Park	Park	—	City of Loma Linda	Cottonwood Avenue	Green space, play area, picnic area	Within 500 feet of Distribution, within 0.25 miles of subtransmission and access roads	1
*	Baseball Field Park	Park	—	City of Loma Linda	Mountain View Ave at Entrada del Parque	6.4 acres, baseball fields	Within 1/4 mile of ROW	1
*	Bryn Mawr Veterans Memorial Park	Park	—	City of Loma Linda	Corner of Juanita and Mayberry Streets	1.4 acres, basketball courts	Within 1/4 mile of relocated distribution line	1
*	Loma Linda Dog Park	Park	—	City of Loma Linda	Beaumont Ave and Mountain View Ave	0.7 acres, small and large dog areas	Within 1/4 mile of ROW	1
*	Heritage Park	Park	—	City of Redlands	Nevada St and Orange Ave	18 acres, Master Plan proposed	Adjacent to the subtransmission route on Iowa St	1
10	Mountain View Avenue Class II Bikeway	Trail/bike	—	City of Loma Linda	Mountain View Avenue	Biking	Within 1/4 mile of ROW	2

**Table D.15-1. Recreational Resources Within the Project Study Area**

No.	Name	Type	Area of Impact	Managing Entity	Location	Amenities	Distance from Proposed Project	Segment
11	Hulda Crooks Park	Park	—	City Loma Linda	Corner of Beaumont Avenue and Mountain View Avenue	50 acres; barbecue, picnic tables, volleyball/sports court, trails/open space	Within 1/4 mile of ROW	2
12	South Hills Preserve	Trails/open space	6%	City of Loma Linda	City of Loma Linda and City of Loma Linda Sphere of Influence (unincorporated San Bernardino and Riverside Counties)	Trails/open space	Within 1/4 mile of ROW	2,3
13	Lillian V. Miller Memorial Trail (also referred to as the Edison Easement Trail)	Trail/bike	6,307 linear feet	City Loma Linda	Between Beaumont Avenue and Mission Road	Paved and earthen trails, benches, drinking fountains	Within 1/4 mile of ROW	1
14	Leonard Bailey Park	Park	—	City of Loma Linda	Lawton Avenue and Whittier Avenue	10 acres; barbeque pits, tennis courts, turf/landscaping; proposed soccer field	Within 1/4 mile of distribution	1
15	San Bernardino County Museum	Museum	—	County of San Bernardino	2024 Orange Tree Lane	Regional museum with exhibits and collections in cultural and natural history	Within 0.25 miles of subtransmission	1
16	Brookside Park	Park	—	Private	Brookside Avenue, City of Redlands	Green space, picnic areas, play area	Within 1/4 mile of subtransmission	1
17**	Moonlight Farms Horse Exercise Track	No longer in operation						
18	San Timoteo Canyon State Park	Park	5%	California Dept of Parks and Recreation	Unincorporated Riverside County	Open space, not yet open to public, expected to provide hiking, horse trails, and camping	Within 1/4 mile of ROW, crossed by ROW	3
19	El Casco Lake	Other	—	Private	San Timoteo Canyon Road and Lakeshore Drive, Unincorporated Riverside County	Fishing	Within 1/4 mile of ROW	3
20	Halo Resorts	Other	—	Private	San Timoteo Canyon Road and Entransz Boulevard, City of Redlands	Camping, fishing	Within 1/4 mile of ROW r	3

**Table D.15-1. Recreational Resources Within the Project Study Area**

No.	Name	Type	Area of Impact	Managing Entity	Location	Amenities	Distance from Proposed Project	Segment
21	Norton Younglove Preserve/Reserve	Other	2%	Riverside County Regional Park and Open-Space District	Unincorporated Riverside County	Open space, hunting	Within 1/4 mile of ROW, crossed by ROW	3,4
22	Bike Lanes (on street)	Trail/bike	442 linear feet	City of Beaumont	Palmer Avenue	Biking (on street)	Within 1/4 mile of ROW	4
23	Morongo Golf Club at Tukwet Canyon	Golf course	—	Private	36211 Champions Drive	Golf course and clubhouse	Partially within the existing WOD corridor	4
24	Trevino Community Park	Park	—	City of Beaumont	Cherry Valley Boulevard	Sports fields, tennis courts	Within 500 feet of the existing WOD corridor	4
25	Interstate 10 Rest Area	Other	7%	Caltrans	North side of I-10 south of Brookside Avenue bridge, City of Calimesa	Open green space, walking, restrooms	Within 1/4 mile of ROW	4
26	Cherry Valley Lakes RV Campground	Other	35%	Private	36805 Brookside Avenue, Unincorporated Riverside County	Camping	Within 1/4 mile of ROW, crossed by ROW	4
27	Stetson Community Park	Park	100%	City of Beaumont	Monte Verde Drive	Open green space, trails	Within ROW	4
28	Oak Valley Golf Club	Golf course	18%	Private	1888 Golf Club Drive	Golf Course	Within 1/4 mile of ROW, crossed by ROW	4
29	Oak Valley Park	Park	91%	City of Beaumont	Oak View Drive	Disc Golf, open green space, trails	Within ROW	4
30	Noble Creek Regional Park	Park	13%	Beaumont-Cherry Valley Recreation and Park District	650 West Oak Valley Parkway, City of Beaumont	Sports fields, raceway, dog park, equestrian center, tennis courts, RV sites	Within 1/4 mile of ROW, crossed by ROW	4
31	Rangel Park	Park	—	City of Beaumont	West 4 <sup>th</sup> Street	Sports fields, play area, picnic area	Within 1/4 mile of staging yards and telecommunications	4
32	Beaumont Avenue Class I Path	Trail/bike	400 linear feet	City of Beaumont	West side of Beaumont Avenue	Paved trail – cycling and walking	Within 1/4 mile of ROW, crossed by ROW	4
33	Drainage Class I Path	Trail/bike path	164 linear feet	City of Beaumont	Parallel to drainage between Cougar Way and Beaumont Avenue	Paved trail – cycling and walking	Within 1/4 mile of ROW, crossed by ROW	4



**Table D.15-1. Recreational Resources Within the Project Study Area**

No.	Name	Type	Area of Impact	Managing Entity	Location	Amenities	Distance from Proposed Project	Segment
34	SCE Corridor Class I Path	Trail/bike	3,973 linear feet	City of Beaumont	SCE Corridor between Cherry Ave and Beaumont Avenue	Paved Trail – cycling and walking	In ROW	4
35	Albert A. Chatigny Sr. Community Center	Community center	—	City of Beaumont	1310 Oak Valley Parkway	Basketball court, playground, gym	Within 1/4 mile of ROW	4
36	Cherry Avenue Class I Path	Trail/bike	3,170 linear feet	City of Beaumont	Between Cherry Avenue and Starlight Avenue	Paved Trail – cycling and walking	In ROW	4
37	Stewart Park	Park	—	City of Beaumont	Located at the intersection of 8 <sup>th</sup> & 11 <sup>th</sup> and Orange & Maple Avenues	Play area, open space	Within 1/4 mile of telecom line	
38	Sun Lakes Country Club Golf Course	Golf course	—	Private	850 S. Country Club Drive, City of Banning	Golf Course	Within 1/4 mile of telecommunications	4
39	Gilman Historic Ranch	Other	—	Riverside County Regional Park and Open-Space District	1901 West Wilson Street, City of Banning	Historic tours, picnic tables, barbeques, and museum	Partially within the existing WOD corridor	4
40	Lions Park	Park	—	City of Banning	S. Hargrave Street,	Sports fields, play area	Within 1/4 mile of telecommunications	5
41	Roosevelt Williams Park	Park	—	City of Banning	Located at the corner of Wilson and Blanchard Streets	Play area, basketball courts, picnic area, boys & girls club	Within 1/4 mile of telecommunications	5
42	BLM Land	Other	15%	Bureau of Land Management	Various parcels within, north and south of PS, between SR-62 and Rushmore Avenue	Open Space	Within 1/4 mile of ROW, crossed by ROW	6
43	Pacific Crest National Trail	Trail	607 linear feet	USFS	Unincorporated Riverside County	National Scenic Trail; 2,650 miles through California, Oregon, and Washington	Within 1/4 mile of ROW, crossed by ROW	6
44	Rest Area	Other	—	Caltrans	I-10 W/E, Exit 113	Bathrooms, picnic tables, phones	Within 1/4 mile of access roads	6

\* Not shown on Figures D.15-1a through D.15-1k.

\*\* The recreational facility identified as 17 in the PEA (Moonlight Farms Horse Exercise Track) is no longer in operation.

Source: SCE, 2013; Loma Linda, no date; Redlands, 2012.

Federal, state, local and private parks and recreational areas, including open space and trails, are found across the project study area. Substantial portions of land within both counties in the project study area are public land, including federal land administered by the BLM or the USFS, state parks, county parks and open spaces, and municipal parks and facilities. Private recreational facilities within or near the project study area include open spaces, equestrian facilities, trails, golf courses, and campgrounds.

#### **D.15.1.2.1 Segment 1: San Bernardino**

The San Bernardino Substation to San Bernardino Junction segment would traverse approximately 0.4 miles of open space in the City of Loma Linda, passing through residential and industrial development as well as agricultural areas. The line would be within 0.25 miles of Cottonwood Park, Baseball Field Park, Loma Linda Dog Park (within ROW), Leonard Bailey Park, Brookside Park, and Heritage Park. These parks are described in Table D.15-1 and shown on Figures D.15-1a and D.15-1b.

The line would be rebuilt approximately 0.1 miles east of the 19.6-acre Hulda Crooks Park. Hulda Crooks Park, operated by the City of Loma Linda, would be located in both Segment 1 and 2. Hulda Crooks Park features playground equipment, barbecue pits, basketball, volleyball, and lighted tennis courts, and an open area for field sports. Approximately 12 acres of the park are located within the project study area.

The San Bernardino County Museum is located in the City of Redlands within 0.25 miles of the 66 kV subtransmission lines in Segment 1. The museum is a regional museum with exhibits and collections in cultural and natural history.

Also located within the project study area in Segments 1 and 2 are on-street bike lanes on Barton Road and Mountain View Avenue. These bike lanes/routes are maintained by the City of Loma Linda. An estimated 1.25 miles of the Lillian V. Miller Memorial Trail (also known as the Edison Easement Trail) is located within the existing WOD corridor in Segment 1. This Class I (off-road) trail consists of paved and earthen surface trails, benches, and drinking fountains.

Segment 1 includes on-street bike lanes within the existing WOD corridor on San Bernardino Avenue in the City of San Bernardino. A portion of the Santa Ana River Trail is located within the project study area. The Santa Ana River Trail and Parkway is overseen by a Policy Advisory Group of elected officials and representatives of nonprofit organizations. Currently, the Policy Advisory Group includes the mayors of the cities of Anaheim, Corona, Redlands, Riverside, and San Bernardino; supervisors from the counties of Orange, Riverside, and San Bernardino; a commissioner from the Santa Ana Watershed Project Authority; and a member of The Wildlands Conservancy. Operations and maintenance of the Santa Ana River Trail is undertaken by a combination of city and county park departments, including the Riverside County Regional Parks and Open Space District, the San Bernardino County Regional Parks Division, and the parks departments of the cities of Redlands and San Bernardino (SCE, 2014).

Additional recreation areas located further from the Proposed Project include the Santa Ana River Wash ACEC, located approximately 2.9 miles northeast of San Bernardino Substation. The ACEC encompasses 750 acres of BLM land north of Redlands.

#### **D.15.1.2.2 Segment 2: Colton and Loma Linda**

The Colton to Loma Linda segment would traverse approximately 2.7 miles of open space in the City of Loma Linda and approximately 0.6 miles of open space in the City of Colton, both used for recreation. A number of riding and hiking trails are located within this open space. On-street bike lanes on Barton Road and the Mt. Vernon Bike Lane (Mt. Vernon Avenue) are located within the Proposed Project boundaries in the City of Grand Terrace. These bike lanes/trails are maintained by the City of Grand Terrace.

The City of Loma Linda adopted a riding and hiking trail plan in 1973, which includes the SCE easement and provides access to the trail system in the Badlands area (Loma Linda, 2009). The riding and hiking trail system is accessed via Mountain View Avenue, Richardson Street, and Oakwood Drive in the City of Loma Linda.

The Rancho Mediterranean and Grand Terrace Senior Center Parks are located within Segment 2. The Rancho Mediterranean Park is an approximately 4-acre privately maintained park in the City of Colton. Approximately 0.04 acres of the park is located within the existing WOD corridor in Segment 2, and approximately 2.82 acres of the park are located within 500 feet of the Proposed Project boundaries in Segment 2 (SCE, 2014). These parks are described in Table D.15-1 and shown on Figure D.15-1b.

The City of Grand Terrace operates the Grand Terrace Senior Center and Park. The Grand Terrace Senior Center provides a full spectrum of services and activities for seniors. The park offers seating areas, walking paths, monuments, gardens, and direct access into the senior center. The Senior Center and Park are located within 500 feet of the Proposed Project boundaries (SCE, 2014).

The South Hills Preserve is located in Segments 2 and 3 and would be crossed by the Proposed Project. The South Hills Preserve is almost 2,000 acres of protected open space. Conservation of the hillside and maximizing the preservation of natural open space are part of Loma Linda's long-range plan for the South Hills area (Loma Linda, 2009). South Hills is open to pedestrians, bicycles, and horses.

#### **D.15.1.2.3 Segment 3: San Timoteo Canyon**

Segment 3 would cross three large recreation areas and one smaller private recreation facility. These are described in Table D.15-1 and shown on Figures D.15-1c and D.15-1d. The California State Park, San Timoteo Canyon, is an ancient river valley that runs from south of the City of Banning in Riverside County to a point just south of the City of San Bernardino in San Bernardino County. In 2001, a portion of the canyon came under management of the California State Parks with the intent to provide hiking trails, horse riding trails, camping, and historic sites. Due to budget constraints, California State Parks has not prepared a Management Plan for San Timoteo Canyon State Park, and no opening date has been set. Approximately 37.5 acres of San Timoteo Canyon State Park are within the existing WOD corridor in Segment 3, 102 acres are within 500 feet of the boundaries of the Proposed Project in Segment 3, and 294 acres are within 0.25 miles of the existing WOD corridor in Segment 3 (SCE, 2013).

The El Casco Lake is a reservoir located 3.2 miles from Calimesa in Riverside County. The 15-acre lake, owned by the Riverside Land Conservancy, is among approximately 8,000 acres of publicly owned land in San Timoteo Canyon. El Casco Lake offers fishing activities but is not currently open to the public. In January 2013, the Riverside County Regional Park and Open-Space District Advisory Commission approved a memorandum of understanding between the Park District and the Riverside Land Conservancy "to work cooperatively to develop and further the concept and ideas for El Casco Regional Park." Approximately 1.63 acres of the lake are located within 500 feet of the existing WOD corridor in Segment 3, and approximately 19 acres are located within the project study area in Segment 3 (SCE, 2013).

The Norton Younglove Preserve/reserve, located west of the City of Beaumont in Riverside County, consists of an extensive pattern of dramatic and rugged mountainous terrain. The Preserve/reserve includes grasslands, riparian, and woodland habitat areas and serves as a wildlife corridor. The Riverside County Regional Park and Open-Space District presently manages the Preserve/reserve. There are ongoing discussions between the County of Riverside and the State of California Department of Parks and Recreation regarding the possible transfer of the property into the San Timoteo Canyon State Park. Approximately 66 acres of the Preserve/reserve are located within the existing WOD corridor in Segments 3

and 4, approximately 295 acres of the Preserve/reserve are located within 500 feet of the Proposed Project boundaries in Segments 3 and 4, and approximately 588 acres are located within 0.25 miles of the Proposed Project boundaries in Segments 3 and 4 (SCE, 2013).

One privately owned recreational facility is located within 0.25 miles of the ROW in of Segment 3. Halo Resorts owns and maintains campgrounds that offer recreational vehicle (RV) sites with full hook-ups, dedicated tent sites, cabin rentals, and scheduled activities (e.g., fishing).

#### **D.15.1.2.4 Segment 4: Beaumont and Banning**

Segment 4 recreation facilities are described in Table D.15-1 and shown on Figures D.15-1d through D.15-1f. Within the Beaumont and Banning segment, the City of Beaumont operates the Trevino Community Park, Albert A. Chatigny Senior Center, Oak Valley Park, Stewart Park, and Stetson Community Park. A portion of some of the parks is located within the Proposed Project ROW:

- Stetson Community Park is approximately 9 acres and offers open space and trails. The entire park is located within the Proposed Project ROW boundaries.
- Noble Creek Regional Park is located in the City of Beaumont, but it is operated by the Beaumont-Cherry Valley Recreation and Park District. Approximately 7 acres of Noble Creek Regional Park are located within the existing WOD corridor in Segment 4, 24.6 acres are within 500 feet of the Proposed Project boundaries, and 53.2 acres are within 0.25 miles of the Proposed Project boundaries (SCE, 2013).
- Cherry Valley Lakes RV Campground is a privately owned and maintained campground within unincorporated Riverside County. A portion of the campground is located within the existing WOD corridor in Segment 4.
- Oak Valley Park is approximately 13 acres and offers open space, trails, and disc golf facilities. Most of Oak Valley Park (11.62 acres) is located within the Proposed Project Corridor and the entire park is located within 500 feet of the Proposed Project boundaries.

The City of Beaumont maintains an on-street bike route on Palmer Avenue, which is located within the Proposed Project boundaries in Segment 4. In addition, off-street (Class I) bikeways and trails are maintained by the City of Beaumont on the west side of Beaumont Avenue, parallel to a drainage ditch between Cougar Way and Beaumont Avenue, between Cherry Avenue and Starlight Avenue, and within the Southern California Edison (SCE) corridor between Cherry Avenue and Beaumont Avenue.

Additionally, two golf courses are partially located within the corridor. The Oak Valley Golf Club is a private 18-hole golf course and the Morongo Golf Club at Tukwet Canyon is a private golf course offering 36 holes; portions of both clubs are within the 0.5-mile wide study corridor, and the ROW passes through the Oak Valley Golf Club. Caltrans maintains a rest area along Interstate 10 (I-10) within the Segment 4 project study area. The rest area (referred to as Wildwood rest area) located on the north side of I-10 south of the Brookside Avenue bridge (in the City of Calimesa) features open green space and restrooms.

In addition to the local and regional parks within 0.25 miles of the ROW, the route would travel south of the San Bernardino National Forest and north of Gilman Historic Ranch. The Potrero ACEC would be located further south of the Proposed Project.

- **San Bernardino National Forest (SBNF).** The SBNF was established in 1907 and is managed by the USFS. The SBNF is located both north and south of I-10, and the Banning and Beaumont segment would travel within 1 mile of the northern portion of the SBNF. Recreational activities at the SBNF include hiking, camping, OHV use, skiing, fishing, and horseback riding (USDA Forest Service, no date).

- **Gilman Historic Ranch and Wagon Museum.** The Gilman Historic Ranch and Wagon Museum provides visitors with an interpretation of the history of California from the Cahuilla Indians to the exploration and settlement of southern California. Recreational facilities include the Gilman homestead ranch in addition to historical and educational programs that attract visitors (Riverside County Parks, 2014).

The other recreational area that is located in the vicinity of the Banning and Beaumont segment, but is further than 1 mile away, is the Potrero ACEC (located 3 miles south of the Proposed Project and accessed from Highland Springs Ave.). The Potrero ACEC is located within the Western Riverside County Multiple Species Habitat Conservation Plan and is managed by the BLM.

#### **D.15.1.2.5 Segment 5: Morongo Tribal Lands and Surrounding Areas**

The only designated recreation facilities within Segment 5 is the Roosevelt Williams Park (formerly called Pass Valley Park). This park is located on approximately 6.3 acres within the City of Banning and is shown on Figure D.15-1g.

#### **D.15.1.2.6 Segment 6: Whitewater and Devers**

Recreation opportunities in the Whitewater and Devers segment are listed in Table D.15-1 and shown on Figure D.15-1j. Most of the recreation opportunities in Segment 6 are located on BLM managed land. The BLM manages 15.2 million acres of public lands in California, nearly 15 percent of the State's land area. Approximately 381 acres of BLM land are located within 0.25 miles of the existing WOD corridor in Segment 6. Approximately 283 acres are within 500 feet of the project study area and approximately 53 acres are within the boundaries of the Proposed Project. The Proposed Project does not cross special recreation management areas or Areas of Critical Environmental Concern.

A portion of the Pacific Crest National Scenic Trail (PCT) is partially located on BLM land and crosses the existing WOD corridor in Segment 6 west of the City of Palm Springs. The PCT is a long-distance mountain hiking and equestrian trail closely aligned with the highest portions of the Sierra Nevada and Cascade Mountain Ranges. The trail's southern terminus is on the United States border with Mexico and its northern terminus is in British Columbia, Canada. Its corridor through the United States is in the states of California, Oregon, and Washington. The BLM manages 180 miles of the Pacific Crest National Trail, primarily in the southern half of California.

The Caltrans rest area located near Exit 113 (referred to as Whitewater rest area) features restrooms, picnic areas, and phones, and is located within 0.25 miles of the access roads in Segment 6. This rest area is partially in the City of Palm Springs and partially in the County of Riverside.

Additional recreation areas located further from the Proposed Project include the Whitewater Canyon Area of Critical Environmental Concern, the San Gorgonio wilderness area to the north, the Santa Rosa and San Jacinto Mountains National Monument and the San Jacinto wilderness area to the south and the SBNF to the north and south. Some additional information is provided below.

- **Whitewater Canyon Area of Critical Environmental Concern.** The 16,381-acre Whitewater Canyon ACEC is located less than 0.5 miles north of the Proposed Project. This resource area is managed by the BLM, California Desert District and is designated for its wildlife habitat and Native American values (BLM, 1999).
- **Santa Rosa and San Jacinto Mountains National Monument.** The monument is located 0.6 miles south of the ROW and is accessed from Highway 111 or Highway 243.

### D.15.1.3 Environmental Setting for Connected Actions

The connected actions identified in Table B-22 (see Section B.7.1) would require a total of approximately 10,560 acres for solar generation development in the Desert Center and the Blythe areas.

**Desert Center Area.** Connected action projects in the Desert Center area include the proposed Palen Solar Power Project and the proposed Desert Harvest Project, both of which would be on BLM-administered land, as well as approximately 2,400 acres of other solar PV development in the area. This region of the Colorado Desert is located within the relatively flat Chuckwalla Valley. The area is generally undeveloped with the exception of a recently completed solar project and high-voltage transmission lines that cross the area.

The majority of the area's developed recreation sites are managed by BLM and the National Park Service. The Desert Center area does not include any state, regional, or community parks. Recreational use of BLM lands in the Desert Center area is limited primarily to cooler months (i.e., September through May), and the number of visitors is estimated to be approximately 2,000 to 3,000 per year (BLM, 2013). Dispersed recreation on BLM-administered lands includes camping, hiking, hunting, and OHV use on designated routes (BLM, 2012). Recreational resources in the Desert Center area include the following:

- ACECs: Chuckwalla Desert Wildlife Management Area, Palen Dry Lakes, Corn Springs, Alligator Rock, Desert Lily Preserve, and Chuckwalla Valley Dune Thicket;
- Wilderness areas: Palen-McCoy, Chuckwalla Mountains, Little Chuckwalla Mountains, Ornocopia Mountains, Sheephole Valley, and Joshua Tree;
- Joshua Tree National Park;
- Bradshaw Trail National Back Country Byway;
- Edmund C. Jaeger Nature Sanctuary;
- General Patton Museum at Chiriaco Summit;
- Corn Springs Campground (BLM-managed);
- Lake Tamarisk Desert Resort (member-owned community for seniors) (BLM, 2013); and
- Former Desert Center Airport (members-only automotive racetrack) (BLM, 2012).

**Blythe Area.** The connected projects in the Blythe area would involve approximately 4,200 acres for solar PV developments. Recreation areas in this area include BLM-managed resources, recreation facilities operated by the Riverside County Regional Park and Open-Space District, City of Blythe parks and recreation areas, and privately owned motor vehicle parks and campgrounds. Dispersed recreation on BLM-administered lands is limited to cooler months (i.e., September through May) and includes backpacking, camping, hiking, horseback riding, rockhounding, photography and painting, rock climbing, spelunking, hunting (e.g., dove, quail, deer), landsailing on dry lakes, mountain and trail biking, observing cultural resources, and OHV use on designated routes (POWER Engineers, 2014).

Specific recreational resources in the Blythe Area include the following:

- ACECs: Mule Mountains and Big Marias (number of annual visitors to these ACECs is estimated to be approximately 100);
- Wilderness areas: Palo Verde Mountains, Rice Valley, Big Maria Mountains, and Riverside Mountains (the number of annual visitors to these wilderness areas is estimated to be approximately 100 to 200 hikers, while motor vehicle camping near the wilderness areas accounts for up to 2,000 annual visitors);

- BLM-managed camping facilities: Mule Mountain Long Term Visitor Area (LTVA), Midland LTVA, Wiley's Well Campground, and Coon Hollow Campground;
- Bradshaw Trail National Back Country Byway (65-mile route that begins 35 miles southeast of Indio and ends 15 miles southwest of Blythe; and
- Cibola National Wildlife Refuge (managed by U.S. Fish and Wildlife Service).

## **D.15.2 Applicable Regulations, Plans, and Standards**

The Proposed Project would traverse federal, state, and local jurisdictions that have implemented management plans for recreational resources. To determine the Proposed Project's consistency with these government plans and policies, a thorough review of applicable policies was conducted.

### **D.15.2.1 Federal**

#### **Federal Land Policy and Management Act**

Congress established the Federal Land Policy and Management Act (FLPMA) in 1976 to provide for the management, protection, development, and enhancement of public lands. FLPMA requires public lands be provided for multiple objectives including to provide for outdoor recreation and human use. Sections 201 and 202 of this act established BLM land use planning requirements. Land use plans and planning decisions are the basis for every on-the-ground action the BLM undertakes.

The BLM has exclusive jurisdiction of ROWs on BLM public lands in the Proposed Project area. Public lands have inherent recreational value and offer varying opportunities for recreational activities. The Proposed Project corridor is located within the Palm Springs–South Coast Resource Management Plan area (1994). This plan is in the process of being updated. The BLM published a Draft South Coast Resource Management Plan and Environmental Impact Statement in 2011. The Final EIS is scheduled to be released later in 2015. It has not yet been adopted.

In addition, the Proposed Project would be located within the California Desert Conservation Area Plan of 1980, as amended. The purpose of the CDCA designation is "to provide for the immediate and future protection and administration of the public lands in the California desert within the framework of a program of multiple use and sustained yield, and the maintenance of environmental quality" (43 U.S.C. 1781[b]).

There are no BLM-designated or proposed special recreation management areas or extensive recreation management areas within the Proposed Project limits.

#### **Recreation and Public Purposes Act**

The Recreation and Public Purposes Act is administered by the BLM. The act authorizes the sale or lease of public lands for recreational or public purposes to state and local governments and to qualified nonprofit organizations. Examples of typical uses on lands subject to the Act are historic monument sites, campgrounds, schools, fire houses, law enforcement facilities, municipal facilities, landfills, hospitals, parks, and fairgrounds.

#### **Comprehensive Management Plan for the Pacific Crest National Scenic Trail**

The PCT is one of the original National Scenic Trails established by Congress in 1968. It is administered by the USFS in partnership with the BLM, National Park Service, California State Parks, and the Pacific

Crest Trail Association. The Comprehensive Management Plan for the Pacific Crest National Scenic Trail (1982) provides overall guidance for the development, management and use of the trail. The Proposed Project would cross the PCT in Segment 6, west of Whitewater Canyon.

### **D.15.2.2 State**

The Proposed Project crosses the San Timoteo Canyon State Park. As noted above, due to budget constraints, California State Parks has not prepared a Management Plan for the park so there are no applicable plans or standards at this time.

### **D.15.2.3 Local**

The CPUC has jurisdiction over the siting and design of the Proposed Project because it authorizes the construction of investor-owned public utility (IOU) facilities. General Order (GO) No. 131-D Section III.C requires “the utility to communicate with, and obtain the input of, local authorities regarding land-use matters and obtain any nondiscretionary local permits.” Appendix 9 (Policy Screening Report) identifies county and city plans and policies regarding recreation and other resources of concern to planners. The Appendix indicates policies that are potentially applicable to the Proposed Project and whether the project would be consistent with the plan or policy. These policies are numerous and are not repeated here.

## **D.15.3 Environmental Impacts of the Proposed Project**

### **D.15.3.1 Approach to Impact Assessment**

This section considers the potential impact to and disruption of recreational resources from implementing the Proposed Project. Loss of recreational resources is anticipated to be minor as the project is located primarily in an already existing corridor and the line would replace existing structures. However, as portions of the corridor are currently used for recreation, temporary impacts to recreation are likely to occur during construction when the recreation areas would be temporarily unavailable to the nearby users or when a nearby recreation area would be affected by indirect impacts. The metrics used to compare alternatives would be the number of recreational resources directly and indirectly impacted by the alternative and the length of time of the direct and indirect impact, in particular, the length of closure time during construction of the project for each recreational resource, if necessary.

#### **D.15.3.1.1 Applicant Proposed Measures**

Table D.15-2 presents the Applicant Proposed Measures that SCE has committed to implementing during construction and operation of the Proposed Project. If revision or expansion of any APM is found to be required based on the analysis in this EIR/EIS, those changes are explained in Section D.15.3.3 (Impact Analysis).

---

**Table D.15-2. Applicant Proposed Measures for Recreation**

---

<b>APM</b>	<b>Description</b>
APM REC-1	SCE would coordinate temporary closures with recreational facility managers and would post a public notice at recreation facilities indicating that the facilities would be closed or have limited use during construction.
APM REC-2	SCE would prepare a construction notification plan identifying procedures for notifying the public of the location and duration of construction.

---



### D.15.3.2 CEQA Significance Criteria

According to the CEQA Environmental Checklist for assessing the impacts to recreation, a project causes a potentially significant impact if it would:

- Increase the use of existing neighborhood and regional parks or other recreational facilities such that substantial physical deterioration of the facility would occur or be accelerated.
- Include recreational facilities or require the construction or expansion of recreational facilities which might have an adverse physical effect on the environment.

Neither of these is applicable. The Proposed Project is a transmission project with a set construction period and a small operations workforce. It does not include an increase in population that would substantially increase the use of existing neighborhood and regional parks such that a substantial physical deterioration would occur; therefore, the first CEQA Environmental Checklist significance criterion is not applicable. The Proposed Project would not require construction of recreational facilities or require the expansion of recreational facilities; therefore the second criterion is not applicable to this project and is not addressed.

Although not identified in the CEQA checklist, from previous transmission projects it is known that the Proposed Project could result in impacts to recreation that:

- Would directly or indirectly disrupt activities in established recreation areas and reduce access or visitation.
- Would substantially reduce the scenic, biological, cultural, geologic, or other important factors that contribute to the value of recreational facilities or areas.

These are addressed below.

### D.15.3.3 Impacts and Mitigation Measures

#### ***Impact R-1: Construction activities would temporarily reduce access and visitation to recreation areas.***

Construction activities for the Proposed Project are anticipated to occur between May 2016 and May 2020. This would require establishing temporary staging yards used as reporting locations for workers, vehicle and equipment parking, and material storage, modification of existing substations, rehabilitation and construction of new access and spur roads, preparation of laydown/work areas for the new structure pad locations, grading and clearing of vegetation for each structure pad location, foundation installation for each pole, and installation of the new structures.

Construction of the Proposed Project would require the use of temporary shoo-fly facilities. A shoo-fly is a temporary electrical line on temporary poles that is used during construction to maintain electrical service to the area while allowing portions of a permanent line to be taken out of service temporarily. The shoo-fly facilities would be removed after work on the permanent line is completed.

The Proposed Project would also require permanent relocation of portions of existing 66 kV and 12 kV lines and upgrades to existing telecommunications. Some of the relocation of the 12 kV circuits and telecommunication facilities would include underground systems.

Project construction activities create a number of temporary disturbances that would diminish the value of affected areas, such as bike lanes, parks, golf clubs, and open space/preserves. The noise, dust, and

traffic generated during construction would negatively affect a visitor's enjoyment of these recreation areas so recreationists may be less likely to visit these resources during project construction.

In certain instances, for reasons of safety, access to some areas or facilities might be temporarily prohibited. Some specific recreation locations would experience direct impacts and closures during construction. These include those listed below (also see the full list of recreation areas within the ROW in Section D.15.1.2 and Table D.15-1):

- Rancho Mediterranean Park (parking lot)
- South Hills Preserve (open space)
- Lillian V. Miller Memorial Trail (trail within ROW)
- Rest areas (restroom and parking)
- Stetson Community Park (Grass areas and paved pathways)
- Noble Creek Regional Park (dirt and paved parking, baseball field and spectator seating)
- Trevino Community Park (paved walkway)
- Bike lane on Barton Road, Beaumont Avenue, Drainage and SCE Corridor Class I path, Cherry Avenue
- Norton Younglove Preserve (open space and trails)
- San Timoteo Canyon State Park (open space and trails)
- Cherry Valley Lakes RV Campground (10 RV sites and much of RV parking and storage area)
- Oak Valley Golf Club and Park (grass areas outside fairways and dirt pathways)
- Pacific Crest Trail (trail)

These trails, parks, and bike lanes are directly within the ROW. The facilities would be off limits to the public during active construction at transmission structure sites, which could last up to eight weeks. In addition, the entire ROW corridor would be temporarily closed during conductor stringing activities, which would be intermittent, with the total cumulative closure duration no more than two weeks (SCE, 2014; Data Response REC-3). For the bike lane closure along Palmer Avenue, SCE has stated that the closure would be no more than 72 hours (SCE, 2014; Data Response REC-3).

Through implementation of APM REC-1 and REC-2, SCE has committed to coordinating closures with recreational facility managers and posting information about the closures but has not provided any additional information regarding the timing of such coordination or provided any notification regarding alternative recreational facilities available during construction. Without appropriate schedule information and alternative recreation options, direct and indirect effects to recreational users and loss of recreational facilities would result in a substantial impact. Mitigation Measures R-1a (Coordinate construction schedule and activities with the authorized officer for the recreation area) and R-1b (Coordinate with local agencies to identify alternative recreation areas) would be required to reduce these impacts, and would ensure that recreational users are informed of scheduled construction activities and informed of alternative areas for use. These mitigations measures supersede APMs REC-1 and REC-2.

The Proposed Project would cross the PCT as the trail traverses unincorporated Riverside County land north of the Santa Rosa and San Jacinto Mountains National Monument. As described in Section D.15.3.1, the PCT was designated as one of the first scenic trails in the National Trails System, and is limited to non-mechanized means of travel. For the PCT closure, SCE has stated that the closure would be no more than 72 hours (SCE, 2014; Data Response REC-3). The presence of construction equipment and anticipated construction work would negatively affect users of the trail and construction would require temporary closure of the trail. In order to allow for continued use of the trail, Mitigation Measure R-1c (Provide a temporary detour for Pacific Crest National Scenic Trail users) is recommended. Implementation of this mitigation measure would allow recreationists to use the trail during construction, and would inform visitors of scheduled construction activities and would reduce impacts to PCT users to the extent feasible.

The Proposed Project would be constructed across approximately 66 acres of the Norton Younglove reserve within the Calimesa and San Timoteo Canyon segment. Project construction activities would create a number of temporary conditions that would diminish the value of the visitor experience at the Norton Younglove reserve. For example, the noise, dust, and construction traffic generated during construction activities could negatively affect a visitor’s enjoyment of this recreation area. Recreationists may be less likely to visit this resource during project construction. The location of construction equipment may also temporarily preclude access to some areas. Such a disturbance to recreational activities or a reduction in the visitation to the reserve due to construction activities would result in a substantial effect. Construction-related impacts to the Norton Younglove reserve would be mitigated through implementation of Mitigation Measure R-1a (Coordinate construction schedule and activities with the authorized officer for the recreation area). Implementation of this mitigation measure would minimize impacts to recreationists at the Norton Younglove reserve, and would ensure that recreational users are informed of scheduled construction activities.

***Mitigation Measures for Impact R-1: Construction activities would temporarily reduce access and visitation to recreation areas***

**R-1a**      **Coordinate construction schedule and activities with the authorized officer for the recreation area.** No less than 30 days prior to construction that would affect recreation areas, SCE shall coordinate construction activities and the project construction schedule with the authorized officer of the recreation areas listed below. SCE shall schedule construction activities to avoid heavy recreational use periods, including major holidays, in coordination with, and at the discretion of the authorized officer. SCE shall locate construction equipment to avoid temporary preclusion of recreation area use whenever feasible per the recommendations of the authorized officer. SCE shall also prepare a public notice of construction activities consistent with Mitigation Measure LU-1a (Prepare Construction Notification Plan). SCE shall document its coordination efforts with the authorized officer, and provide this documentation to the CPUC and the BLM 30 days prior to construction.

- |                                    |  |
|------------------------------------|--|
| ■ Rancho Mediterranean Park        | ■ Bike lane on Barton Road, Beaumont Avenue, Drainage and SCE Corridor Class I path, Cherry Avenue |
| ■ South Hills Preserve             |  |
| ■ Lillian V. Miller Memorial Trail | ■ Norton Younglove Preserve  |
| ■ Rest areas                       | ■ San Timoteo Canyon State Park  |
| ■ Stetson Community Park           | ■ Cherry Valley Lakes RV Campground  |
| ■ Noble Creek Regional Park        | ■ Oak Valley Golf Club and Park  |
| ■ Trevino Community Park           | ■ Pacific Crest Trail  |

**R-1b**      **Coordinate with local agencies to identify alternative recreation areas.** SCE shall coordinate with the local parks and recreation departments regarding construction activities at the park and recreation facilities listed in R-1a, in order to identify alternative recreation sites that may be used by the public. SCE shall post a public notice at recreation facilities to be closed or have limited access during construction consistent with Mitigation Measure LU-1a (Prepare Construction Notification Plan) and identify any alternative recreation sites. SCE shall document its coordination with the parks and recreation departments and shall submit this documentation to the CPUC and the BLM 30 days prior to initiating project construction.

**R-1c**      **Provide a temporary detour for Pacific Crest National Scenic Trail users.** No less than 60 days prior to construction affecting the PCT, SCE shall coordinate with the USFS to establish a temporary detour of the trail during trail closure to avoid hazardous construction areas. SCE shall prepare a public notice of the temporary trail closure and information on the trail

detour consistent with Mitigation Measure L-1a (Prepare Construction Notification Plan). SCE shall document its coordination efforts with the UFSF and submit this documentation to the CPUC and the BLM 30 days prior to construction.

***Impact R-2: Presence of a transmission line or substation would change the character of a recreation area, diminishing its recreational value***

The Proposed Project would replace two existing single-circuit transmission lines and one existing double-circuit transmission line with two double-circuit transmission lines. Project activities would occur within an existing ROW. The proposed double-circuit structures would be greater in height than the single-circuit structures, and as such the Proposed Project would alter the viewshed along the ROW (see Section D.18.3, Visual Resources). However, the number of transmission lines that would traverse the recreational areas would decrease, allowing additional space for recreation.

At its crossing of the PCT, the Proposed Project would remove two existing single-circuit 220 kV structures and one existing double-circuit 220 kV structure and construct new double-circuit 220 kV structures. The nearest proposed transmission structure would include one double-circuit structure an estimated 190 feet east of the trail. The nearest existing structure to the PCT is an estimated 280 feet west of the line. All other structures would be over 350 feet from the trail. The Proposed Project would therefore place one structure almost 100 feet closer to the PCT than previously sited. In addition, the PCT is located within a proposed stringing site, would be an estimated 180 feet from a shoofly work area, and would be less than 50 feet from a temporary disturbance area. While this structure would be slightly more noticeable, overall, there would be no increase in the total amount of industrial development across the recreational areas as a result of project activities. Consequently, development and operation of the Proposed Project would not significantly change the character of the recreation area. No mitigation is required.

***Impact R-3: Presence of a transmission line would permanently preclude recreational activities***

Recreational resources that are located in the vicinity of the ROW would potentially be affected by the siting of a new transmission line. For example, the construction of proposed transmission structures would place a structure closer to the Pacific Crest Trail than currently located. However, this would not preclude or prevent use of the recreational uses. The siting of new structures adjacent to existing structures would avoid the creation of new barriers to recreational uses and would reduce barriers to recreational activities in the long term by reducing the number of transmission structures overall. As such, the Proposed Project would not permanently preclude recreational activities and no mitigation is required.

### **D.15.3.4 Impacts of Connected Actions**

***Impact R-1: Construction activities would temporarily reduce access and visitation to recreation areas***

**Desert Center Area.** This area is characterized by dispersed recreational opportunities on BLM-administered land. Construction of the connected actions (i.e., Palen Solar Power Project; Desert Harvest Project; and 2,400 acres of other solar PV development) across BLM-managed areas would require the agency's review and approval, and direct conflicts with temporary access to recreational resources could only occur at the discretion of the BLM. To ensure that recreation impacts are minimized to the extent feasible, measures similar to Mitigation Measure R-1b (Coordinate with local agencies to identify alternative recreation areas) would need to be implemented in the event that construction activities require a temporary preclusion of a recreational resource or facility.

While the location of construction activities may not interfere with public access to recreation areas, construction would create indirect impacts from noise, fugitive dust, vehicle movement, and nighttime

lighting. These nuisance impacts may affect visitation at the many ACECs, wilderness areas, and other recreational resources in the region. Construction-related impacts would be mitigated through implementation of measures similar to Mitigation Measure R-1a (Coordinate construction schedule and activities with the authorized officer for the recreation area), which would ensure that recreational users are informed of scheduled construction activities.

**Blythe Area.** This area includes many regional, city, and private recreational facilities, as well as resources that are managed by the BLM and the U.S. Fish and Wildlife Service. Recreation areas that are privately owned or managed by local jurisdictions are located near residential areas or along the Colorado River. As the connected actions (i.e., 4,200 acres of solar PV development) would interconnect with the Colorado River Substation, the construction of these actions is not expected to preclude the use of these regional, city, or private recreational facilities. In contrast, BLM-managed recreation areas include developed facilities (e.g., campgrounds) and protected areas (e.g., ACECs and wilderness areas) that are dispersed throughout the Blythe area. Any construction of solar generation on or across BLM-managed areas would require the agency's review and approval, and direct conflicts with temporary access to recreational resources could only occur at the discretion of the BLM. To ensure that recreation impacts are minimized to the extent feasible, measures such as Mitigation Measure R-1b (Coordinate with local agencies to identify alternative recreation areas) would need to be implemented in the event that construction activities require a temporary preclusion of the use of a recreational resource or facility.

While the location of construction activities may not interfere with public access to recreation areas, construction would create indirect impacts from noise, fugitive dust, vehicle movement, and nighttime lighting that may affect visitation at the recreational resources in the region. Construction-related impacts would be mitigated through implementation of measures such as Mitigation Measure R-1a (Coordinate construction schedule and activities with the authorized officer for the recreation area), which would ensure that recreational users are informed of scheduled construction activities.

Construction workers may use both the Mule Mountain LTVA and the Midland LTVA as a source of temporary housing. Depending on the number of construction workers seeking housing, use of these LTVAs during construction of solar generation projects would limit the public's access to long-term camping facilities. Given that each LTVA can accommodate several hundred camping vehicles, it is unlikely that recreational use of the LTVA would be restricted. Additionally, LTVAs provide a limited opportunity for employee housing as they require the use of self-contained camping vehicles, and are closed from April 16 to September 14 (POWER Engineers, 2014). Seasonal or vacation home rentals would serve as an alternative to temporary, affordable housing in the Blythe Area (POWER Engineers, 2014).

***Impact R-2: Presence of project facilities would change the character of a recreation area, diminishing its recreational value***

**Desert Center Area.** This region includes many recreation areas (e.g., ACECs, wilderness areas, and Joshua Tree National Park) that attract visitors for their scenic resources and undeveloped landscapes. Development of the connected actions would be visible from numerous recreational resources, which would alter the recreational experience by introducing energy-related facilities and infrastructure into the area. In order to minimize impacts to the recreational value of these resources to the extent feasible, mitigation measures such as those required for visual resources would need to be implemented.

**Blythe Area.** Similar to Desert Center, the Blythe area includes many recreation areas (e.g., ACECs and wilderness areas) that attract visitors for their scenic resources and undeveloped landscapes. It also includes the Colorado River. The connected solar projects could be visible from numerous recreational resources, which would alter the recreational experience by introducing energy infrastructure into these

areas. In order to minimize impacts to the recreational value of these resources to the extent feasible, mitigation measures such as those required for visual resources would need to be implemented.

***Impact R-3: Presence of project facilities would permanently preclude recreational activities***

None of the connected actions are expected to limit or preclude access to regional, city, and private recreational facilities within the Desert Center or the Blythe areas. BLM-managed recreational opportunities are dispersed across these areas. Any construction of solar generation on BLM lands would require the agency's review and approval, and direct conflicts with access to recreational resources could be limited by requirements imposed by BLM.

### **D.15.3.5 CEQA Significance Determination for Proposed Project and Connected Actions**

***Impact R-1: Construction activities would temporarily reduce access and visitation to recreation areas (Class II)***

Construction of the Proposed Project would result in temporary disturbances from noise, dust, and traffic that would diminish the value of nearby recreational facilities. The Proposed Project would require some recreation areas to be closed temporarily from 72 hours to up to 10 weeks during construction, a potentially significant impact. Mitigation Measures R-1a (Coordinate construction schedule and activities with the authorized officer for the recreation area), R-1b (Coordinate with local agencies to identify alternative recreation areas), and R-1c (Provide a temporary detour for Pacific Crest National Scenic Trail users) include coordinating construction schedule with the authorized officers of the recreation areas and identifying alternative recreation areas. These measures would reduce the impact to a less than significant level by ensuring that the construction time frame avoids the heavy recreational use periods and by identifying alternative areas for recreation to provide the users recreational options throughout the entire construction period (Class II).

For the connected actions, temporary conflicts regarding access to recreation areas during construction of the solar projects would depend on the final location of these projects relative to recreation areas. A short-term interference with visitation to a recreation site would create a potentially significant impact. Indirect impacts to recreation areas would also occur from construction-related noise, dust, and traffic that would diminish the value of nearby recreational facilities and would contribute to a decline in visitation. Imposing measures similar to Mitigation Measures R-1a and R-1b would reduce the impact to a less than significant level by ensuring that the construction time frame avoids the heavy recreational use periods and by identifying alternative areas for recreation to provide the users recreational options throughout the entire construction period (Class II).

***Impact R-2: Presence of a transmission line or substation would change the character of a recreation area, diminishing its recreational value (Class III for Proposed Project)***

The Proposed Project would replace three existing transmission lines with two double-circuit transmission lines. It would occur within an existing ROW. While the Proposed Project would change the location of some of the structures within existing recreation areas, it would not substantially change the character of the recreation area as they are already crossed by existing lines. This impact would be less than significant (Class III).

***Impact R-2: Presence of project facilities would change the character of a recreation area, diminishing its recreational value (Class I for Connected Actions)***

**Connected Actions.** The solar generation projects that are connected to the WOD Project would introduce energy infrastructure into a natural and undeveloped landscape that is characterized by its scenic resources. These projects would be visible from many recreation areas, especially in the Desert Center Area and the Blythe Area where many ACECs and wilderness areas are located. In particular, the CEC concluded that the impacts on local residents, the Desert Center Airport, and recreational visitors to the Chuckwalla Valley Raceway from the effects of glint and glare would be significant. The environmental review of the Solar Harvest project concluded that construction of the project would alter the existing character of the area and may affect surrounding recreational uses as a result of the altered viewshed, including a substantial adverse effect on the wilderness experience of dispersed and occasional visitors to the Joshua Tree Wilderness Area. It is likely that glint and glare for other solar PV projects would also be significant. Implementing mitigation measures similar to those imposed on the Proposed Project for visual resources would reduce impacts to the recreational experience of these resources to the extent feasible. However, the long-term impacts to the recreational value of these resources would remain significant and unavoidable (Class I).

***Impact R-3: Presence of a transmission line would permanently preclude recreational activities (Class III for Proposed Project)***

The Proposed Project would replace three existing transmission lines with two double-circuit transmission lines. It would occur within an existing ROW. While the Proposed Project would change the location of some of the structures within existing recreation areas, it would not preclude recreational activities that were previously permitted within the easement. This impact would be less than significant (Class III).

***Impact R-3: Presence of project facilities would permanently preclude recreational activities (Class II for Connected Actions)***

**Connected Actions.** The connected projects are not anticipated to limit or preclude access to regional, city, or private recreation areas. Unlike these recreation opportunities, most BLM-managed recreational opportunities are dispersed across the desert areas. Construction of solar generation projects on BLM lands would eliminate access to these affected lands for the life of the project and could alter access to other areas. Mitigation measures would be needed to require alternate access to areas made inaccessible; such measures would make the impact less than significant (Class II).

## **D.15.4 Environmental Impacts of Project Alternatives**

Three alternatives are considered in this section; all of these alternatives would be located within the existing WOD ROW. The No Project/No Action Alternative is evaluated in Section D.15.5. Alternatives are described in detail in Appendix 5 (Alternatives Screening Report) and are summarized in Section C.

Recreational resources within the ROW are described by segment in Section D.15.1.2 above; the description of the environmental setting would apply equally to the alternatives.

### **D.15.4.1 Tower Relocation Alternative**

The Tower Relocation Alternative would locate certain transmission structures in Segments 4 and 6 farther from existing homes than would be the case under the Proposed Project.

Three impacts related to recreation were identified for the Proposed Project. These impacts also would apply to the Tower Relocation Alternative, which overall would be the same as the Proposed Project, with the exception of the relocated transmission towers that are described above and in Appendix 5. The full text of all mitigation measures referenced in this section is presented in Section D.15.3.3.

***Impact R-1: Construction activities would temporarily reduce access and visitation to recreation areas***

Like the Proposed Project structures, several of the relocated towers would be located near or on recreational facilities. Construction of this alternative would result in temporary disturbances from noise, dust, and traffic that would diminish the value of nearby recreational facilities. In addition, five facilities would be directly affected by construction of the relocated towers, including: Stetson Community Park, Oak Valley Golf Course, Oak Valley Park, SCE Corridor Class I Path, and Cherry Avenue Class I Path. Direct impacts to these five facilities would include closure of the facilities, which would be off limits to the public during active construction at transmission structure sites. Although these same five facilities would be directly affected by construction of the Proposed Project, the direct adverse effects under this alternative would be greater due to the extended construction timeframe for this alternative, which would be up to one year longer than the Proposed Project. Also, indirect adverse effects to nearby recreational facilities would be similarly greater due to the extended construction timeframe.

The severity of this adverse effect would be reduced through implementation of Mitigation Measures R-1a (Coordinate construction schedule and activities with the authorized officer for the recreation area) and R-1b (Coordinate with local agencies to identify alternative recreation areas). Implementation of these mitigation measures would ensure that the potential adverse effects related to disruption of recreational access or visitation under this alternative would be minor.

***Impact R-2: Presence of a transmission line or substation would change the character of a recreation area, diminishing its recreational value***

Several of the relocated towers would be near to or on recreational facilities, as described above under Impact R-1. The change in the aesthetic quality and landscape character for nearby recreational facilities would be the same in this alternative as in the Proposed Project. Development and operation of this alternative would not substantially change the character of any nearby recreation area. No mitigation is required.

***Impact R-3: Presence of a transmission line would permanently preclude recreational activities***

The construction of these towers would temporarily disrupt access and visitation to recreation facilities along the ROW. However, the operational presence of these towers would not preclude recreational activities in a manner substantially different than baseline conditions, nor would the relocated towers preclude recreational activities in a more substantial manner than would the Proposed Project. No mitigation is required.

**CEQA Significance Determination for Tower Relocation Alternative**

The CEQA significance determination for each recreation impact in this alternative is presented below.

***Impact R-1: Construction activities would temporarily reduce access and visitation to recreation areas (Class II)***

Construction of this alternative would result in temporary disturbances due to noise, dust, and traffic that would diminish the value of nearby recreational facilities. Like the Proposed Project, this alternative would require some recreation areas to be closed temporarily during construction, which would result in a potentially significant impact. This impact would be slightly more severe compared to the Proposed



Project due to the extended construction schedule. Implementation of Mitigation Measures R-1a (Coordinate construction schedule and activities with the authorized officer for the recreation area) and R-1b (Coordinate construction schedule and activities with the authorized officer for the recreation area) would reduce this impact to a less than significant level by ensuring that the construction time frame avoids the heavy recreational use periods and by identifying alternative areas for recreation to provide users with recreational options throughout the entire construction period (Class II).

***Impact R-2: Presence of a transmission line or substation would change the character of a recreation area, diminishing its recreational value (Class III)***

As for the Proposed Project, this alternative would replace three existing transmission lines with two double-circuit transmission lines within an existing ROW. While this alternative would change the location of some of the structures within existing recreation areas, it would not substantially change the character of the recreation area as they are already crossed by existing lines. This impact would be less than significant (Class III).

***Impact R-3: Presence of a transmission line would permanently preclude recreational activities (Class III)***

The same as for the Proposed Project, this alternative would replace three existing transmission lines with two double-circuit transmission lines within an existing ROW. While this alternative would change the location of some of the structures within existing recreation areas, it would not preclude recreational activities that were previously permitted within the easement. This impact would be less than significant (Class III).

#### **D.15.4.2 Iowa Street 66 kV Underground Alternative**

The Iowa Street 66 kV Underground Alternative would place a 1,600-foot segment of subtransmission line underground, rather than overhead.

Three impacts were identified under the Proposed Project for recreation. These impacts also would apply to the Iowa Street 66 kV Underground Alternative, which overall would be the same as the Proposed Project, with the exception of the underground portion of the subtransmission line that is described above and in Appendix 5. The full text of all mitigation measures referenced in this section is presented in Section D.15.3.3.

***Impact R-1: Construction activities would temporarily reduce access and visitation to recreation areas***

The underground subtransmission line portion of this alternative is not located on or within any recreational facilities. The nearest recreational facility, Brookside Park, is located approximately 0.25 miles to the southeast, too far away to have direct impacts.

***Impact R-2: Presence of a transmission line or substation would change the character of a recreation area, diminishing its recreational value***

The presence of the underground subtransmission line would not change the character of a recreation area or diminish the recreational value of any facility. The location of the underground line would not be visible from any recreational facility, and after construction the line would be located underground and would be invisible.

***Impact R-3: Presence of a transmission line would permanently preclude recreational activities***

The presence of the underground subtransmission line would not permanently preclude recreational activities.

**CEQA Significance Determination for Iowa Street 66 kV Underground Alternative**

The CEQA significance determination for each recreation impact in this alternative is presented below.

***Impact R-1: Construction activities would temporarily reduce access and visitation to recreation areas (No Impact)***

Construction of this alternative would not affect access or use of any recreation area.

***Impact R-2: Presence of a transmission line or substation would change the character of a recreation area, diminishing its recreational value (No Impact)***

The presence of this alternative would not affect the character of any recreation area.

***Impact R-3: Presence of a transmission line would permanently preclude recreational activities (No Impact)***

The presence of this alternative would not preclude any recreation activities.

**D.15.4.3 Phased Build Alternative**

The Phased Build Alternative would retain existing double-circuit 220 kV transmission structures to the extent feasible, remove single-circuit structures, add new double-circuit 220 kV structures, and string all structures with higher-capacity conductors.

Three impacts related to recreation were identified for the Proposed Project. These impacts also would apply to the Phased Build Alternative, which would be located in the same corridor as the Proposed Project and would involve similar although less intense construction activities. The full text of all mitigation measures referenced in this section is presented in Section D.15.3.3.

***Impact R-1: Construction activities would temporarily reduce access and visitation to recreation areas***

Like the Proposed Project structures, several of the new and existing reconducted structures would be located near or on recreational facilities. Due to the reduction in construction activities occurring for this alternative, the severity of these disturbances would be reduced compared to the Proposed Project. Recreational facilities that would experience direct impacts are the same as in the Proposed Project, as described in Section D.15.3.3. Direct impacts to these facilities would include closure of the facilities, which would be off limits to the public during active construction at new structure sites and reconducting at existing structure sites. Direct adverse effects to recreational facilities would be reduced in this alternative compared to the Proposed Project due to the reduction in construction activity.

The severity of this adverse effect would be reduced through implementation of Mitigation Measures R-1a (Coordinate construction schedule and activities with the authorized officer for the recreation area), R-1b (Coordinate with local agencies to identify alternative recreation areas), and R-1c (Provide a temporary detour for Pacific Crest National Scenic Trail users). Implementation of these mitigation measures would ensure that the potential adverse effects related to disruption of recreational access or visitation under this alternative would be minor.

***Impact R-2: Presence of a transmission line or substation would change the character of a recreation area, diminishing its recreational value***

Several of the new and existing structures in this alternative would be near to or on recreational facilities, as described above under Impact R-1. Similar to the Proposed Project, construction and operation of this alternative would result in two double-circuit 220 kV transmission lines in the West of Devers corridor, which represents a reduction in the number of transmission lines in the corridor compared to baseline conditions. Therefore, changes to the landscape character of nearby recreational facilities (including the Pacific Crest Trail) would be the same in this alternative as in the Proposed Project. Development and operation of this alternative would not substantially change the character of any nearby recreation area. No mitigation is required.

***Impact R-3: Presence of a transmission line would permanently preclude recreational activities***

Several of the new and existing structures in this alternative would be near to or on recreational facilities, as described above. The construction and reconductoring of these new and existing structures would temporarily disrupt access and visitation to these facilities. However, the operational presence of these towers would not preclude recreational activities in a manner substantially different than baseline conditions, nor would the reconductored towers preclude recreational activities in a more substantial manner than would the Proposed Project. The new and existing reconductored structures would be sited in an existing ROW and neither this alternative nor the Proposed Project would permanently preclude recreational activities. No mitigation is required.

**CEQA Significance Determination for Phased Build Alternative**

The CEQA significance determination for each recreation impact in this alternative is presented below.

***Impact R-1: Construction activities would temporarily reduce access and visitation to recreation areas (Class II)***

Construction of this alternative would result in temporary disturbances due to noise, dust, and traffic that would diminish the value of nearby recreational facilities. This alternative would require some recreation areas to be closed temporarily during construction, which would result in a potentially significant impact. This impact would be less severe compared to the Proposed Project due to the reduced construction activities. Implementation of Mitigation Measures R-1a (Coordinate construction schedule and activities with the authorized officer for the recreation area), R-1b (Coordinate construction schedule and activities with the authorized officer for the recreation area), and R-1c (Provide a temporary detour for Pacific Crest National Scenic Trail users) would reduce this impact to a less than significant level by ensuring that the construction time frame avoids the heavy recreational use periods and by identifying alternative areas for recreation to provide users with recreational options throughout the entire construction period (Class II).

***Impact R-2: Presence of a transmission line or substation would change the character of a recreation area, diminishing its recreational value (Class III)***

The same as for the Proposed Project, this alternative would result in two double-circuit transmission lines within an existing ROW. While this alternative would change the location of some of the structures within existing recreation areas, it would not substantially change the character of the recreation area as they are already crossed by existing lines. This impact would be less than significant (Class III).

***Impact R-3: Presence of a transmission line would permanently preclude recreational activities (Class III)***

The same as for the Proposed Project, this alternative would result in two double-circuit transmission lines within an existing ROW. While this alternative would change the location of some of the structures within existing recreation areas, it would not preclude recreational activities that were previously permitted within the easement. This impact would be less than significant (Class III).

## **D.15.5 Environmental Impacts of No Project / No Action Alternative**

### **D.15.5.1 No Project Alternative Option 1**

The No Project/No Action Alternative (No Project Alternative) Option 1 is described in Section C.6.3.1. It would consist of a new 500 kV circuit, primarily following the Devers-Valley transmission corridor and extending 26 miles between Devers Substation. It would also require a new 40-acre substation south of Beaumont, and 4 new 220 kV circuits extending 7 miles from the new Beaumont Substation to El Casco Substation, primarily following the existing El Casco 115 kV ROW. The remainder of the No Project Alternative, from El Casco Substation to the San Bernardino and Vista Substations, would be identical to the Proposed Project. Information on environmental resources and project impacts is derived from the Devers–Palo Verde 500 kV No. 2 Project EIR/EIS (CPUC and BLM, 2006) and the El Casco System Project Draft EIR (CPUC, 2007); which include nearly all of the No Project alignment.

**Devers to Beaumont Substation.** The 500 kV line between Devers Substation and Beaumont would cross the Pacific Crest National Scenic Trail (PCT) and would pass through the Santa Rosa and San Jacinto Mountains National Monument, the San Bernardino National Forest, and the San Jacinto Wilderness Area. Near the Beaumont Substation the line would traverse by the Potrero ACEC, a designated wildlife habitat managed by the BLM. Users of the public lands through which the corridor passes could be temporarily affected during construction. For example, temporary detours may be required where the line would cross the PCT. Because of the steep terrain through which the transmission ROW passes on federal lands, other direct impacts are not anticipated to occur. Coordinating construction scheduling with public and community facilities would address this impact. In the Devers to Valley segment of DPV2, the EIR/EIS identified that operation of the transmission line would change the character of the recreation and wilderness areas through which it passed, and this was a significant and unavoidable impact.

**Beaumont Substation.** The substation site is in open grassland and is north of but not adjacent to the Potrero ACEC. It is not expected to affect any recreation resources.

**Beaumont to El Casco Substation.** Recreational use of open space and conservation habitat in the Norton Younglove Preserve occurs for about 2 miles of the 220 kV corridor, between Highway 60 and El Casco Substation. As with recreational uses elsewhere, there may be temporary restrictions on access during construction. Coordinating construction scheduling with public and community facilities would address this impact.

### **D.15.5.2 No Project Alternative Option 2**

No Project Alternative Option 2 would require the construction of over 40 miles of new 500 kV transmission line, following the existing Valley-Serrano 500 kV line. The alternative is described in Section C.6.3.2, and illustrated on Figure C-6b. Construction activities for the No Project Alternative Option 2 would create a number of temporary disturbances that would diminish the value of affected areas, including parks, open space/preserves, and backcountry within the Cleveland National Forest (CNF). The noise, dust, and traffic generated during construction would negatively affect a visitor's enjoyment of

these recreation areas such that the public may be less likely to visit these resources during project construction. In certain instances, for reasons of safety, access to some areas or facilities might be temporarily prohibited.

Construction and operation of this alternative would change the character of the recreational areas surrounding the corridor by introducing new transmission structures and conductors. However, the new 500 kV circuit would be built mostly adjacent to an existing circuit and therefore would not substantially alter the character of the recreational areas through which it passes. Recreational resources that are located in the vicinity of the ROW would potentially be affected by the siting of a new transmission line. For example, the construction of proposed transmission structures would place new structures within the Lake Mathews-Estelle Mountain reserve, the Coldwater and Ladd Inventoried Roadless Areas in the CNF, and Weir Canyon Regional Park. However, this would not preclude or prevent use of these recreational areas, except in the immediate areas surrounding construction. The siting of new structures adjacent to existing structures would avoid the creation of new barriers to recreational uses. Coordinating construction scheduling with public and community facilities would reduce the severity of these impacts.

### D.15.6 Mitigation Monitoring, Compliance, and Reporting

Table D.15-3 presents the mitigation monitoring program for recreation.

**Table D.15-3. Mitigation Monitoring Program – Recreation**

<b>MITIGATION MEASURE</b>	<p><b>R-1a: Coordinate construction schedule and activities with the authorized officer for the recreation area.</b> No less than 30 days prior to construction that would affect recreation areas, SCE shall coordinate construction activities and the project construction schedule with the authorized officer of the recreation areas listed below. SCE shall schedule construction activities to avoid heavy recreational use periods, including major holidays, in coordination with, and at the discretion of the authorized officer. SCE shall locate construction equipment to avoid temporary preclusion of recreation area use whenever feasible per the recommendations of the authorized officer. SCE shall also prepare a public notice of construction activities consistent with Mitigation Measure LU-1a (Prepare Construction Notification Plan). SCE shall document its coordination efforts with the authorized officer, and provide this documentation to the CPUC and the BLM 30 days prior to construction.</p> <ul style="list-style-type: none"> <li>▪ Rancho Mediterranean Park</li> <li>▪ South Hills Preserve</li> <li>▪ Lillian V. Miller Memorial Trail</li> <li>▪ Rest areas</li> <li>▪ Stetson Community Park</li> <li>▪ Noble Creek Regional Park</li> <li>▪ Trevino Community Park</li> <li>▪ Bike lane on Barton Road, Beaumont Avenue, Drainage and SCE Corridor Class I path, Cherry Avenue</li> <li>▪ Norton Younglove Preserve</li> <li>▪ San Timoteo Canyon State Park</li> <li>▪ Cherry Valley Lakes RV Campground</li> <li>▪ Oak Valley Golf Club and Park</li> <li>▪ Pacific Crest Trail</li> </ul>
<b>Location</b>	In all segments having construction affecting recreation facilities.
<b>Monitoring / Reporting Action</b>	CPUC/BLM monitor verifies that SCE has documented the required coordination.
<b>Effectiveness Criteria</b>	Recreational facility users potentially impacted are informed of construction activities affecting recreational resources.
<b>Responsible Agency</b>	CPUC; BLM Palm Springs–South Coast Field Office, authorized officers of recreation areas.
<b>Timing</b>	30 days prior to construction.

**Table D.15-3. Mitigation Monitoring Program – Recreation**

<b>MITIGATION MEASURE</b>	<b>R-1b: Coordinate with local agencies to identify alternative recreation areas.</b> SCE shall coordinate with the local parks and recreation departments regarding construction activities at the park and recreation facilities listed in R-1a, in order to identify alternative recreation sites that may be used by the public. SCE shall post a public notice at recreation facilities to be closed or have limited access during construction consistent with Mitigation Measure LU-1a (Prepare Construction Notification Plan) and identify any alternative recreation sites. SCE shall document its coordination with the parks and recreation departments and shall submit this documentation to the CPUC and the BLM 30 days prior to initiating project construction.
<b>Location</b>	In all segments having construction affecting recreation facilities.
<b>Monitoring / Reporting Action</b>	CPUC/BLM monitor verifies that SCE has documented the required coordination.
<b>Effectiveness Criteria</b>	Recreational facility users potentially impacted are notified of closures and alternative recreation areas.
<b>Responsible Agency</b>	CPUC; BLM Palm Springs–South Coast Field Office, local recreational agencies.
<b>Timing</b>	30 days prior to construction.
<b>MITIGATION MEASURE</b>	<b>R-1c: Provide a temporary detour for Pacific Crest National Scenic Trail users.</b> No less than 60 days prior to construction affecting the PCT, SCE shall coordinate with the USFS to establish a temporary detour of the trail during trail closure to avoid hazardous construction areas. SCE shall prepare a public notice of the temporary trail closure and information on the trail detour consistent with Mitigation Measure L-1a (Prepare Construction Notification Plan). SCE shall document its coordination efforts with the USFS and submit this documentation to the CPUC and the BLM 30 days prior to construction.
<b>Location</b>	Pacific Crest National Scenic Trail
<b>Monitoring / Reporting Action</b>	CPUC/BLM monitor verifies that SCE has documented the required coordination.
<b>Effectiveness Criteria</b>	Detour is provided and marked.
<b>Responsible Agency</b>	CPUC; BLM Palm Springs–South Coast Field Office, USFS.
<b>Timing</b>	60 days prior to construction affecting PCT.

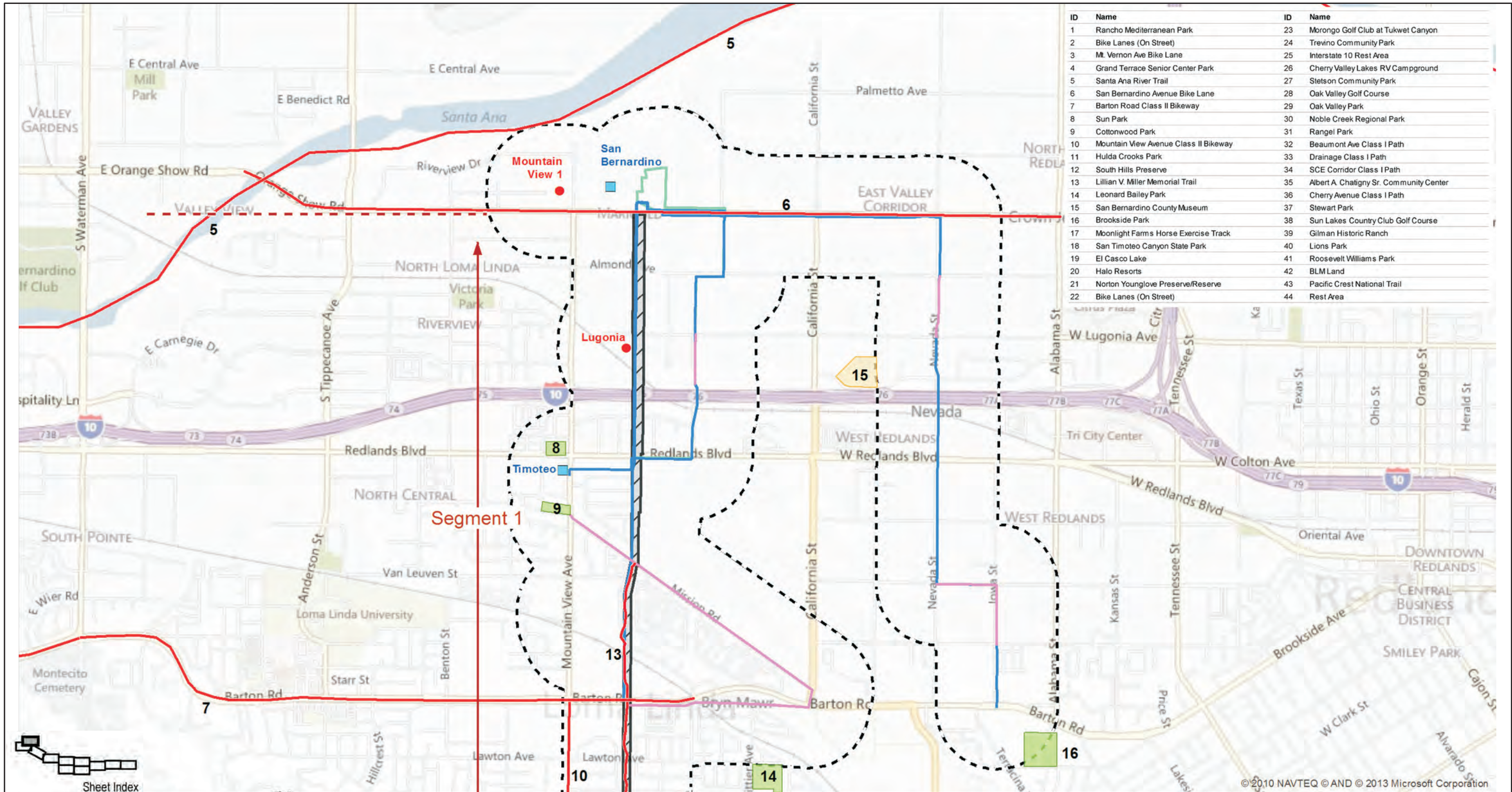
## D.15.7 References

- BLM (Bureau of Land Management). 2013. Palen Solar Electric Generating System Draft Supplemental Environmental Impact Statement. CACA #048810. July.
- \_\_\_\_\_. 2012. Desert Harvest Solar Project Final Environmental Impact Statement and Proposed California Desert Conservation Area Plan Amendment. CACA #49491. November.
- \_\_\_\_\_. 1999. The California Desert Conservation Area Plan 1980 as amended. [http://www.blm.gov/style/medialib//blm/ca/pdf/pdfs/cdd\\_pdfs.Par.aa6ec747.File.pdf/CA\\_Desert\\_.mpdf](http://www.blm.gov/style/medialib//blm/ca/pdf/pdfs/cdd_pdfs.Par.aa6ec747.File.pdf/CA_Desert_.mpdf). Accessed November, 2014.
- CEC (California Energy Commission). 2013. Final Staff Assessment for the Palen Solar Electric Generating System, Part A: Amendment to the Palen Solar Power Project. Docket Number 09-AFC-07C. September.
- \_\_\_\_\_. 2008. Final Staff Assessment for the CPV Sentinel Energy Project. Docket Number 07-AFC-3. October.
- CPUC (California Public Utilities Commission). 2007. SCE El Casco System Project Draft EIR, individual resource Sections. <http://www.cpuc.ca.gov/environment/info/aspen/elcasco/toc-deir.htm>. Accessed April 15, 2015.

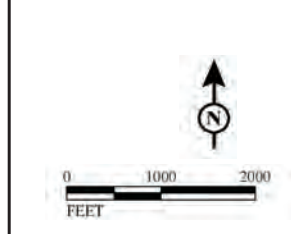
- CPUC and BLM. 2006. SCE Devers–Palo Verde 500 kV No. 2 Project EIR/EIS, Sections on West of Devers Alternative. <http://www.cpuc.ca.gov/environment/info/aspen/dpv2/toc-deir.htm>. Accessed April 15, 2015
- CPUC and USDA (United States Department of Agriculture) Forest Service. 1984. Devers-Valley 500 kV, Serrano-Valley 500 kV and Serrano–Villa Park 220 kV Transmission Line Project Final EIS/EIR. August.
- Loma Linda. No date. All City Parks. <http://www.lomalinda-ca.gov/asp/Site/Departments/PublicWorks/Parks/index.asp>. Accessed September 2014.
- \_\_\_\_\_. 2009. Loma Linda General Plan: Conservation and Open Space Element. <http://www.lomalinda-ca.gov/PDFs/General%20Plan/May%2009/Chapter%209%20-%20Conservation%20&%20Open%20Space%20Element.pdf>. Accessed September 2014.
- POWER Engineers, Inc. 2014. Blythe Mesa Solar Project Draft Environmental Impact Report/Environmental Assessment. SCH #2011111056. June.
- Redlands. 2012. Redlands Heritage Park: Master Improvement Plan. <http://www.cityofredlands.org/sites/default/files/qol/Heratige%20Park/HERITAGE%20PARK%20COLORED%20MASTER%20PLAN.pdf>. Accessed September 2014.
- Riverside County Parks. 2014. Gilman Historic Ranch and Wagon Museum. <http://www.rivcoparks.org/historic-sites/gilman/gilman-historic-ranch-and-wagon-museum-main-page/>. Accessed November 2014.
- USDA (United States Department of Agriculture) Forest Service. No date. Website: About the Forest and Recreation. <http://www.fs.usda.gov/main/sbnf/about-forest>. Accessed November 2014.

*This page intentionally blank.*





Source: SCE, 2013.



**LEGEND**

- Transmission Line Right of Way
- Transmission Line Right of Way to be Removed
- Proposed Transmission Line Right of Way
- Proposed Alternative Transmission Line Right of Way
- Proposed Transmission Line Right of Way Common to Both
- Staging Yards
- Substations
- Junction
- Telecommunication Line Routes
- Relocated Subtransmission Line Routes
- Relocated Distribution Line Routes
- Segment Breaks
- 1/4-mile from Project Components
- Recreational Resources
  - Community Center
  - U.S. Bureau of Land Management
  - Golf Course
  - Museum
  - Other
  - Park
  - Trail/Bike Path
  - Morongo Indian Reservation

**West of Devers Upgrade Project**

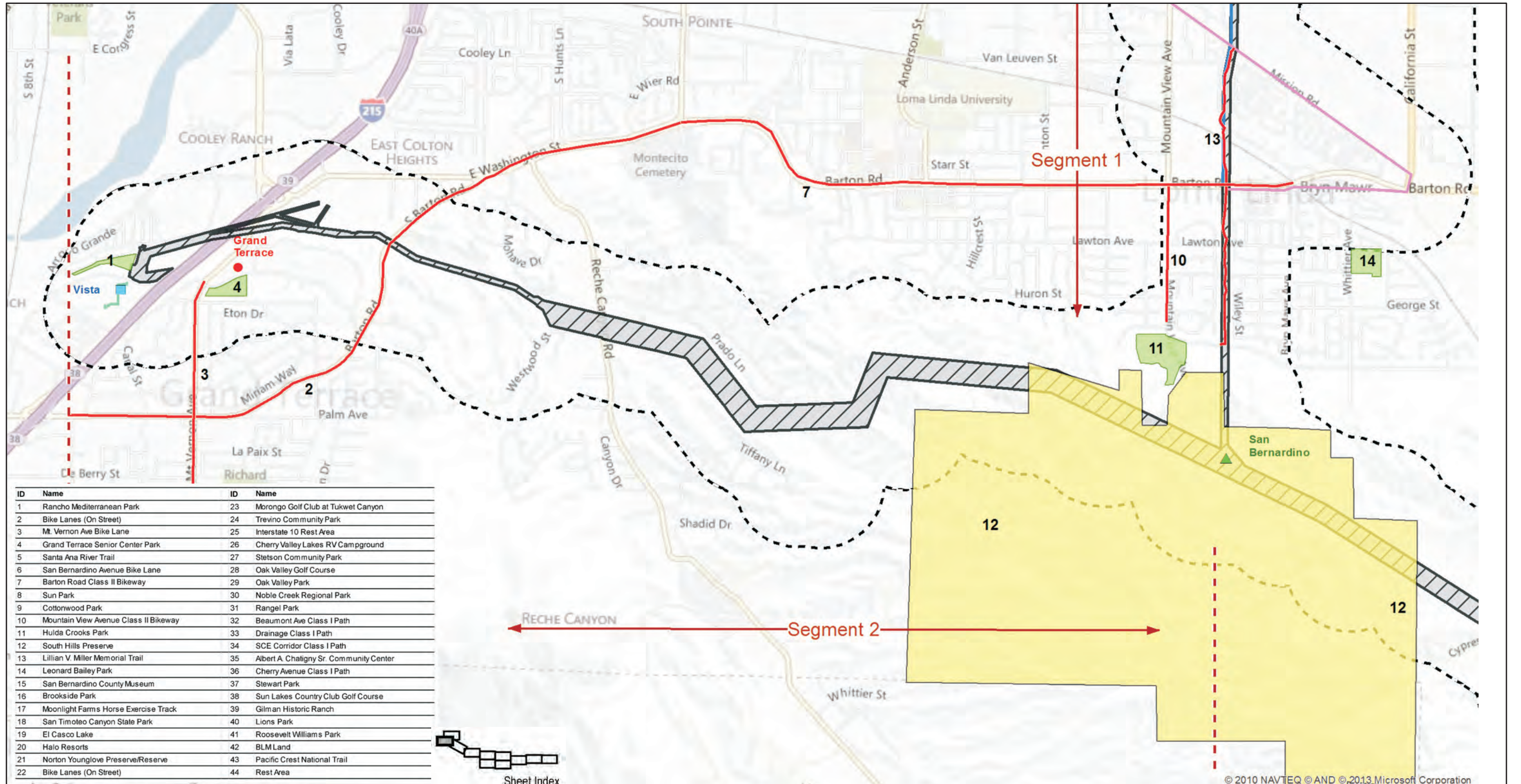
Figure D.15-1a

**Recreational Resources, Segment 1**



*This page intentionally blank.*





Source: SCE, 2013.

**LEGEND**

- Transmission Line Right of Way
- Transmission Line Right of Way to be Removed
- Proposed Transmission Line Right of Way
- Proposed Alternative Transmission Line Right of Way
- Proposed Transmission Line Right of Way Common to Both
- Staging Yards
- Substations
- Junction
- Telecommunication Line Routes
- Relocated Subtransmission Line Routes
- Relocated Distribution Line Routes
- Segment Breaks
- 1/4-mile from Project Components
- Recreational Resources
  - Community Center
  - U.S. Bureau of Land Management
  - Golf Course
  - Museum
  - Other
  - Park
  - Trail/Bike Path
  - Morongo Indian Reservation

Scale: 0 1000 2000 FEET

© 2010 NAVTEQ © AND © 2013 Microsoft Corporation

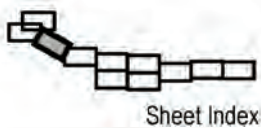
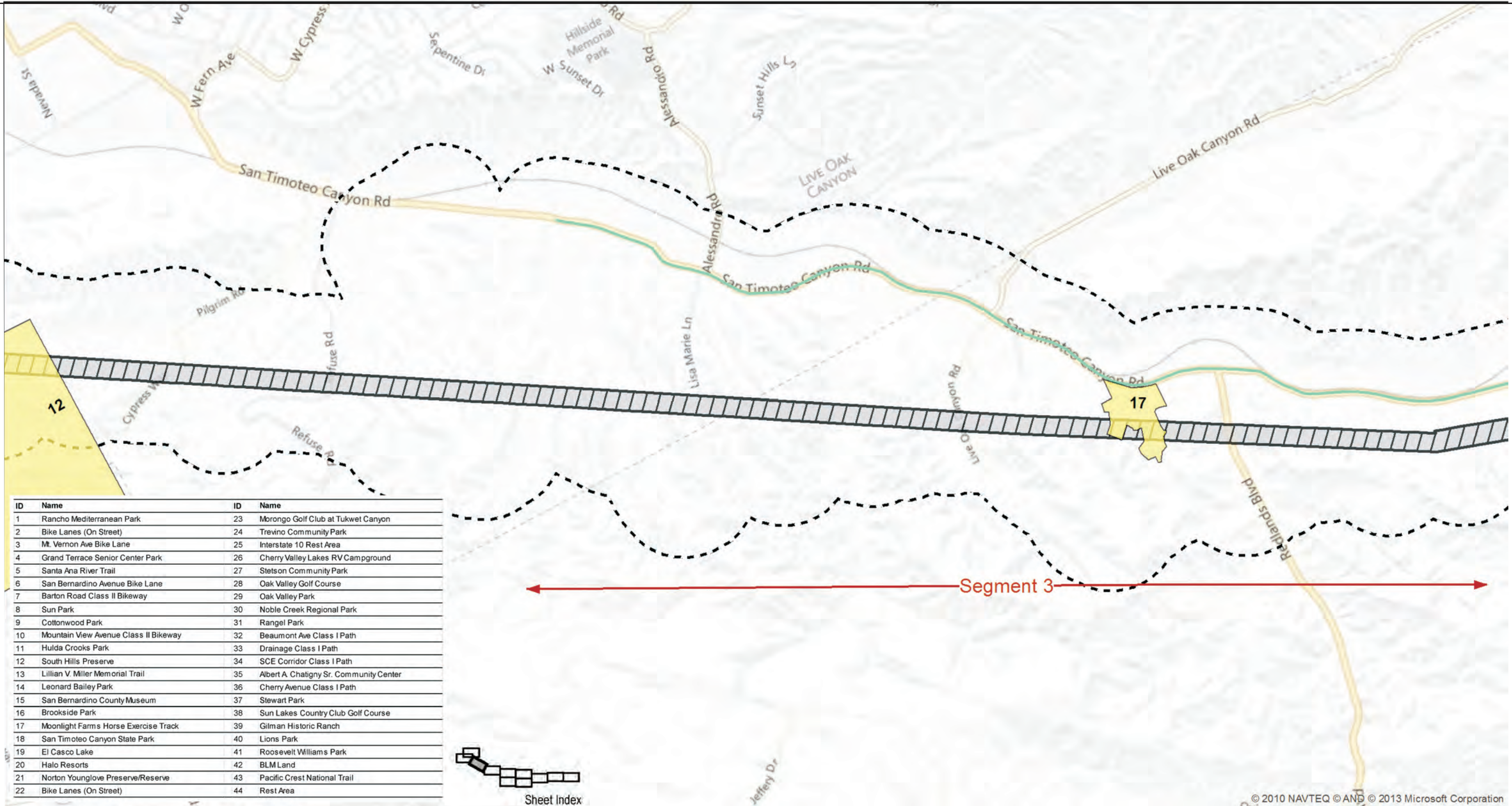
**West of Devers Upgrade Project**

Figure D.15-1b

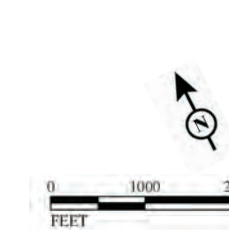
**Recreational Resources, Segment 2**



*This page intentionally blank.*



Source: SCE, 2013.



LEGEND

- Transmission Line Right of Way
- Transmission Line Right of Way to be Removed
- Proposed Transmission Line Right of Way
- Proposed Alternative Transmission Line Right of Way
- Proposed Transmission Line Right of Way Common to Both
- Staging Yards
- Substations
- Junction
- Telecommunication Line Routes
- Relocated Subtransmission Line Routes
- Relocated Distribution Line Routes
- Segment Breaks
- 1/4-mile from Project Components
- Community Center
- U.S. Bureau of Land Management
- Golf Course
- Museum
- Other
- Park
- Trail/Bike Path
- Morongo Indian Reservation

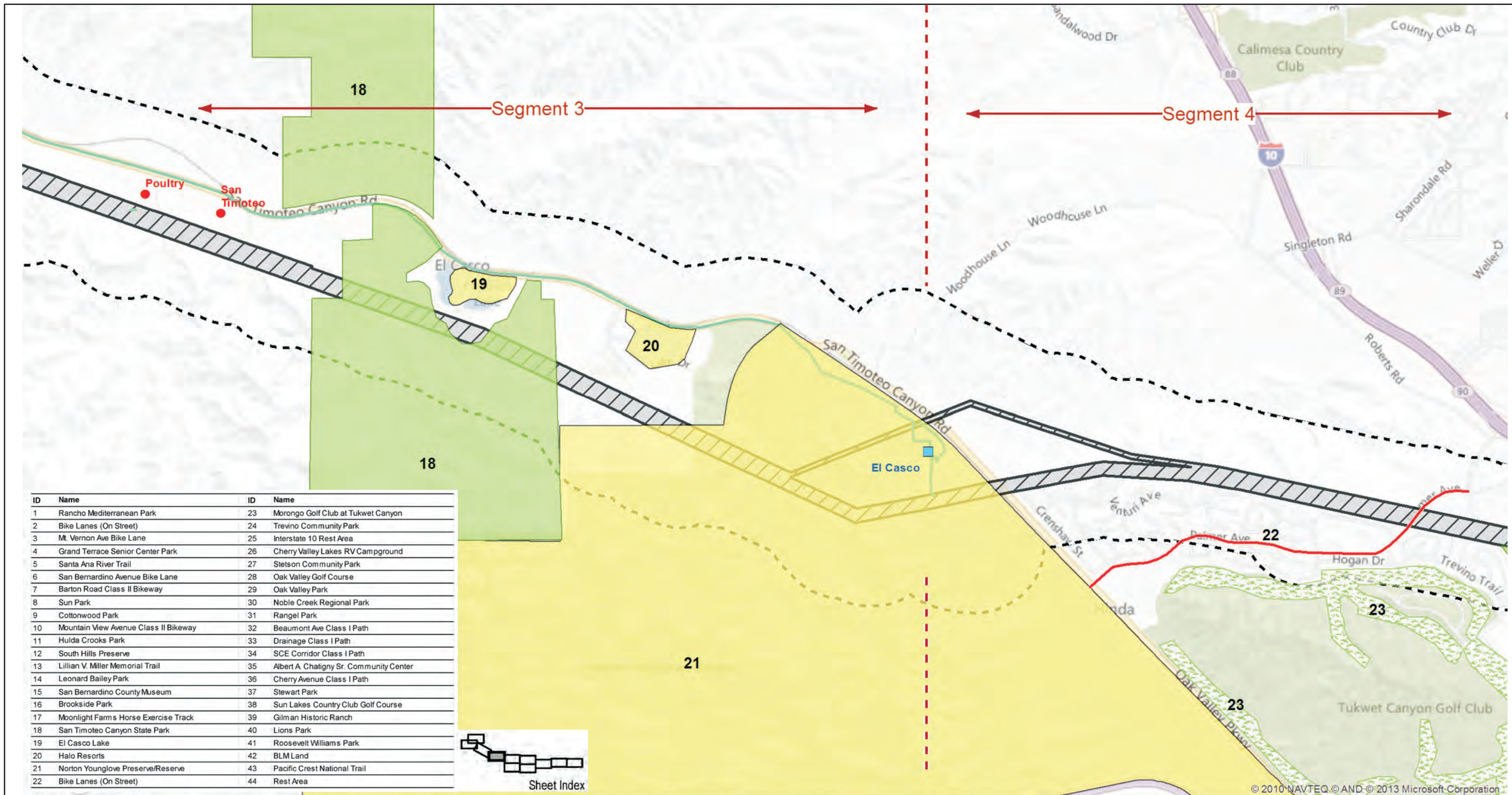
West of Devers Upgrade Project

Figure D.15-1c

Recreational Resources, Segment 3

*This page intentionally blank.*





Source: SCE, 2013.

**LEGEND**

Transmission Line Right of Way	Staging Yards	Segment Breaks	Golf Course
Transmission Line Right of Way to be Removed	Substations	1/4-mile from Project Components	Museum
Proposed Transmission Line Right of Way	Junction	<b>Recreational Resources</b>	Other
Proposed Alternative Transmission Line Right of Way	Telecommunication Line Routes	Community Center	Park
Proposed Transmission Line Right of Way Common to Both	Relocated Subtransmission Line Routes	U.S. Bureau of Land Management	Trail/Bike Path
	Relocated Distribution Line Routes		Morongo Indian Reservation

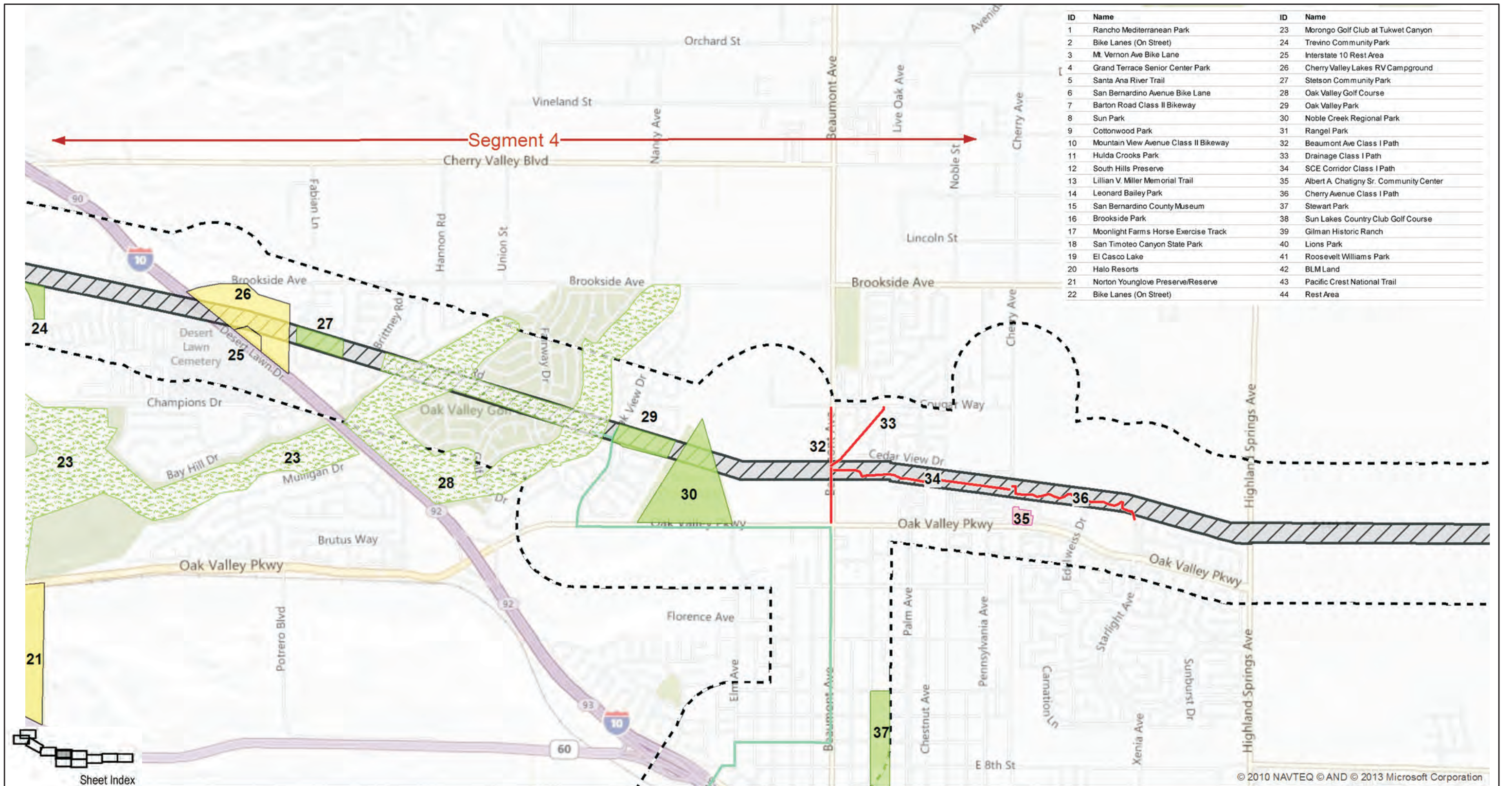
**West of Devers Upgrade Project**

Figure D.15-1d

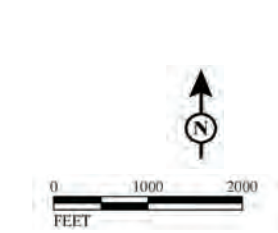
**Recreational Resources, Segment 3 & 4**

*This page intentionally blank.*





Source: SCE, 2013.

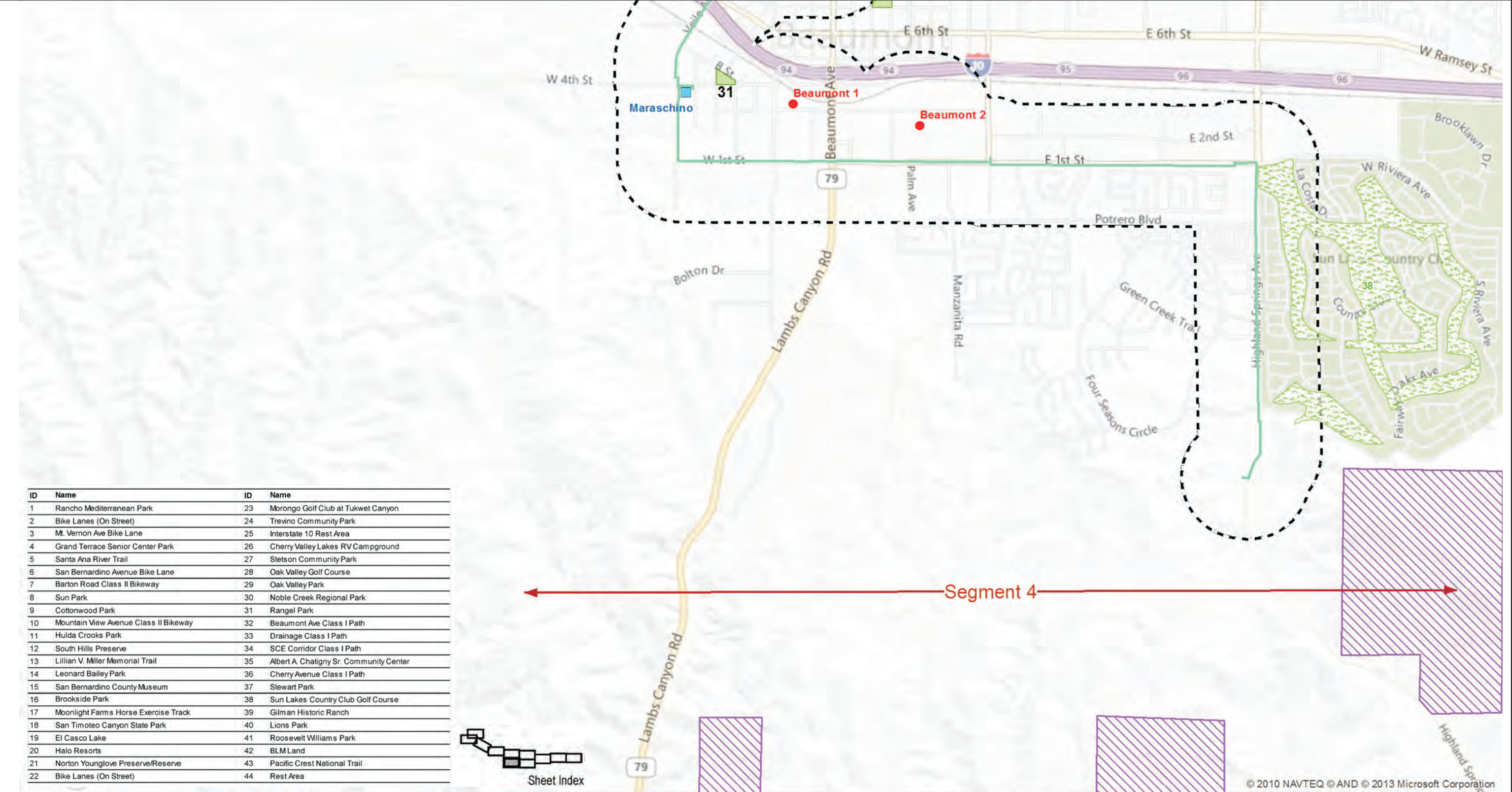


LEGEND							
	Transmission Line Right of Way		Staging Yards		Segment Breaks		Golf Course
	Transmission Line Right of Way to be Removed		Substations		1/4-mile from Project Components		Museum
	Proposed Transmission Line Right of Way		Junction	Recreational Resources			Other
	Proposed Alternative Transmission Line Right of Way		Telecommunication Line Routes		Community Center		Park
	Proposed Transmission Line Right of Way Common to Both		Relocated Subtransmission Line Routes		U.S. Bureau of Land Management		Trail/Bike Path
			Relocated Distribution Line Routes				Morongo Indian Reservation

**West of Devers Upgrade Project**  
Figure D.15-1e  
**Recreational Resources, Segment 4**



*This page intentionally blank.*



Source: SCE, 2013.

**LEGEND**

- Transmission Line Right of Way
- Transmission Line Right of Way to be Removed
- Proposed Transmission Line Right of Way
- Proposed Alternative Transmission Line Right of Way
- Proposed Transmission Line Right of Way Common to Both
- Staging Yards
- Substations
- Junction
- Telecommunication Line Routes
- Relocated Subtransmission Line Routes
- Relocated Distribution Line Routes
- Segment Breaks
- 1/4-mile from Project Components
- Recreational Resources
  - Community Center
  - U.S. Bureau of Land Management
  - Golf Course
  - Museum
  - Other
  - Park
  - Trail/Bike Path
  - Morongo Indian Reservation

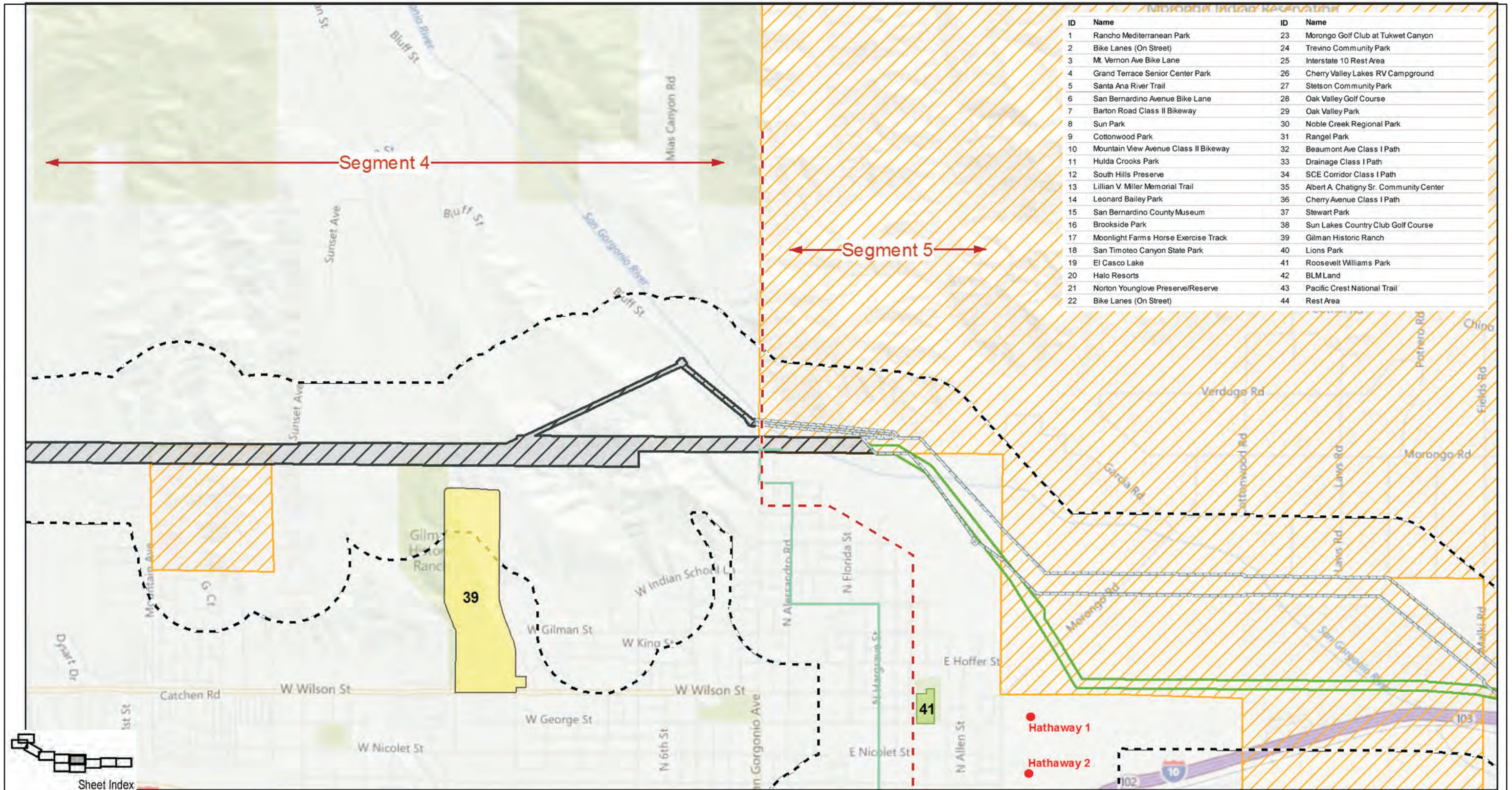
**West of Devers Upgrade Project**

Figure D.15-1f

**Recreational Resources, Segment 4**

*This page intentionally blank.*





Source: SCE, 2013.

**LEGEND**

- Transmission Line Right of Way
- Transmission Line Right of Way to be Removed
- Proposed Alternative Transmission Line Right of Way
- Staging Yards
- Substations
- Junction
- Telecommunication Line Routes
- Relocated Subtransmission Line Routes
- Relocated Distribution Line Routes
- Segment Breaks
- 1/4-mile from Project Components
- Community Center
- U.S. Bureau of Land Management
- Golf Course
- Museum
- Other
- Park
- Trail/Bike Path
- Morongo Indian Reservation

**West of Devers Upgrade Project**

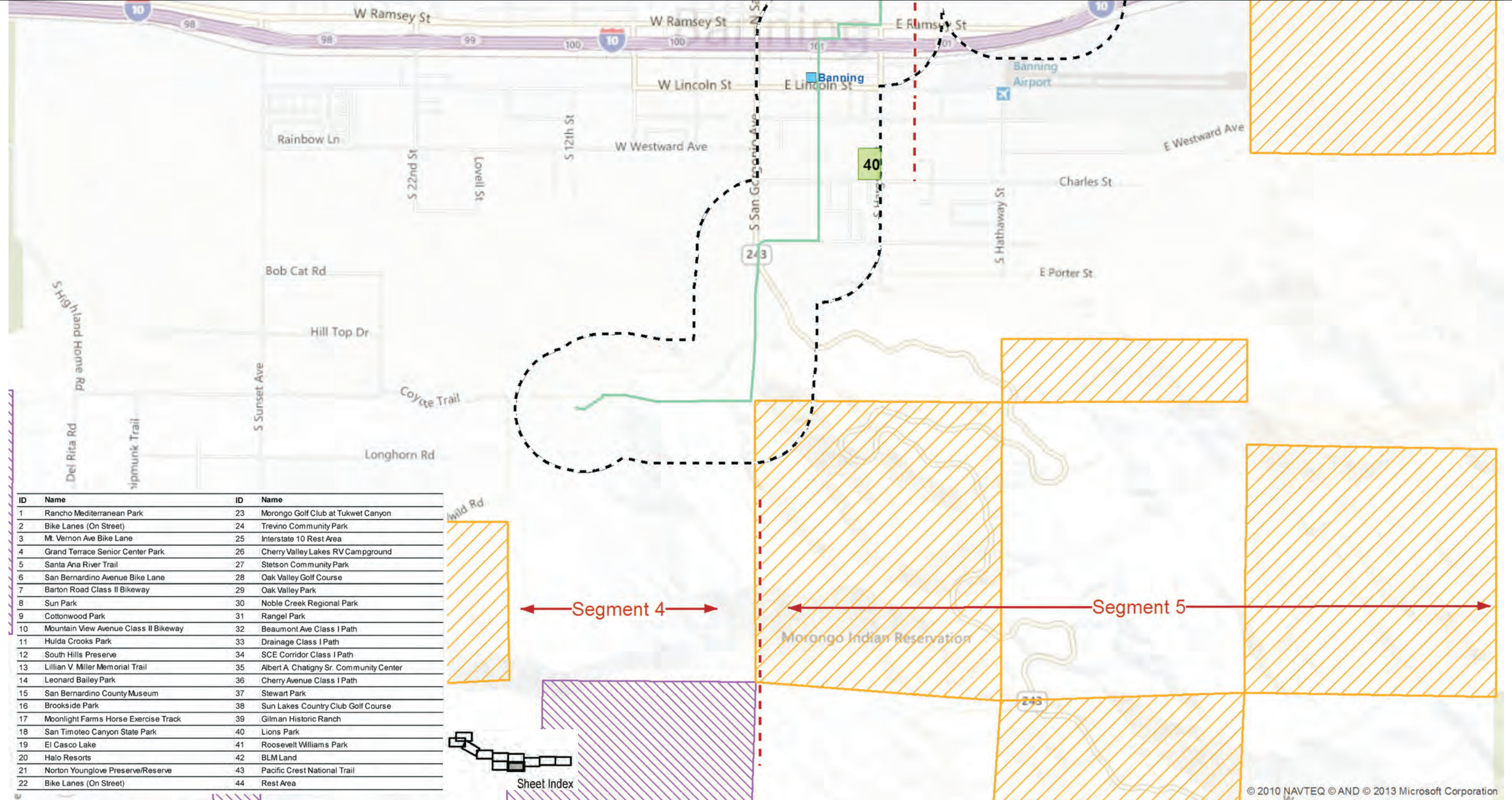
Figure D.15-1g

**Recreational Resources, Segment 4 & 5**

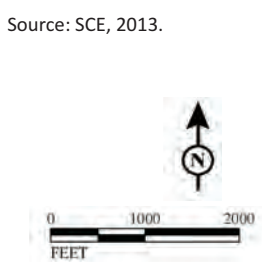
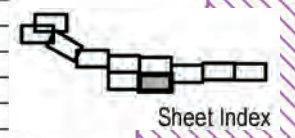


*This page intentionally blank.*





ID	Name	ID	Name
1	Rancho Mediterranean Park	23	Morongo Golf Club at Tukwet Canyon
2	Bike Lanes (On Street)	24	Trevino Community Park
3	Mt. Vernon Ave Bike Lane	25	Interstate 10 Rest Area
4	Grand Terrace Senior Center Park	26	Cherry Valley Lakes RV Campground
5	Santa Ana River Trail	27	Stetson Community Park
6	San Bernardino Avenue Bike Lane	28	Oak Valley Golf Course
7	Barton Road Class II Bikeway	29	Oak Valley Park
8	Sun Park	30	Noble Creek Regional Park
9	Cottonwood Park	31	Rangel Park
10	Mountain View Avenue Class II Bikeway	32	Beaumont Ave Class I Path
11	Hulda Crooks Park	33	Drainage Class I Path
12	South Hills Preserve	34	SCE Corridor Class I Path
13	Lillian V. Miller Memorial Trail	35	Albert A. Chatigny Sr. Community Center
14	Leonard Bailey Park	36	Cherry Avenue Class I Path
15	San Bernardino County Museum	37	Stewart Park
16	Brookside Park	38	Sun Lakes Country Club Golf Course
17	Moonlight Farms Horse Exercise Track	39	Gilman Historic Ranch
18	San Timoteo Canyon State Park	40	Lions Park
19	El Casco Lake	41	Roosevelt Williams Park
20	Halo Resorts	42	BLM Land
21	Norton Younglove Preserve/Reserve	43	Pacific Crest National Trail
22	Bike Lanes (On Street)	44	Rest Area



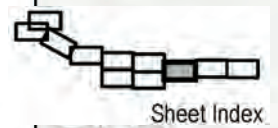
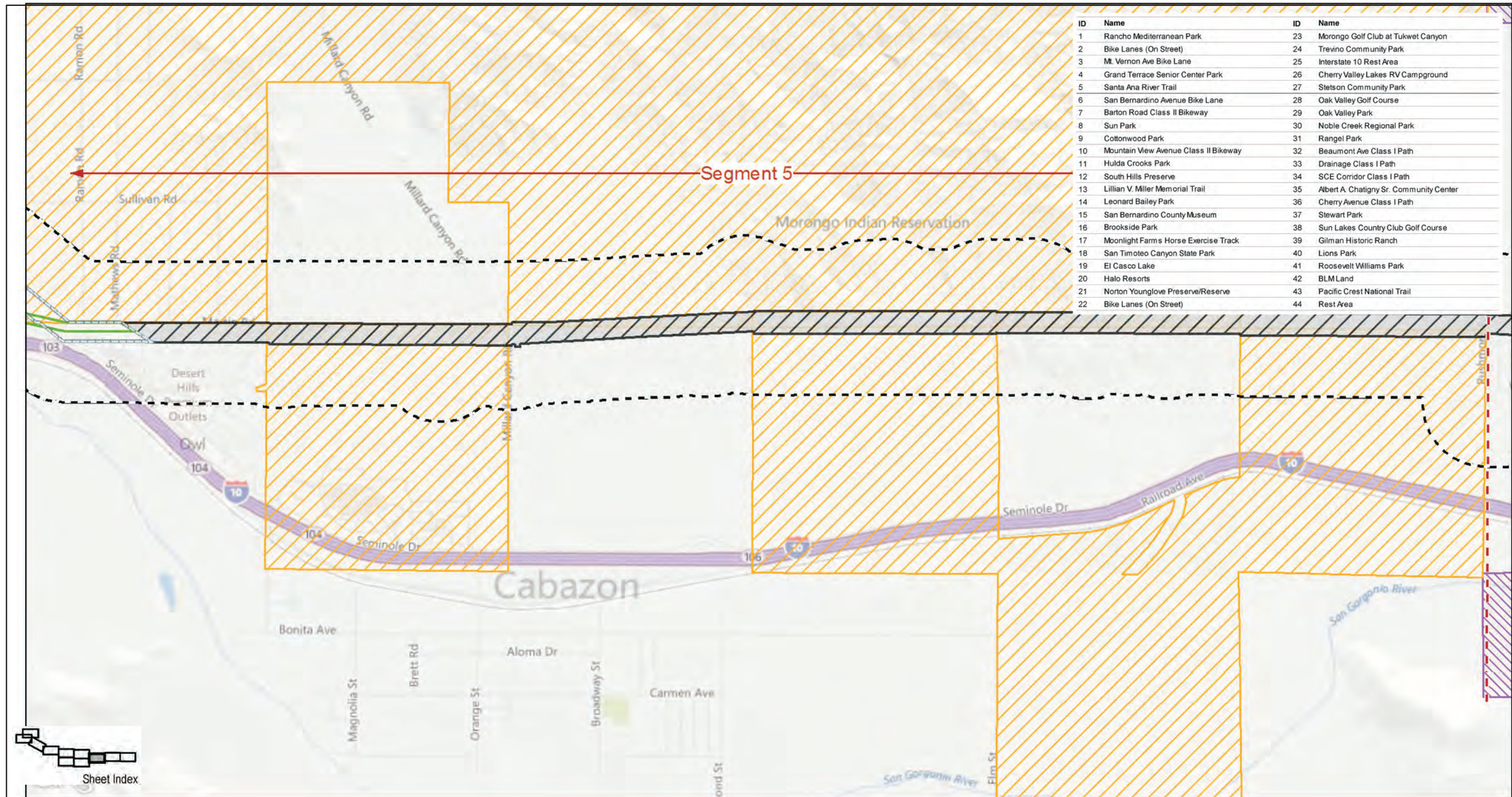
LEGEND	
	Transmission Line Right of Way
	Transmission Line Right of Way to be Removed
	Proposed Transmission Line Right of Way
	Proposed Alternative Transmission Line Right of Way
	Proposed Transmission Line Right of Way Common to Both
	Staging Yards
	Substations
	Junction
	Telecommunication Line Routes
	Relocated Subtransmission Line Routes
	Relocated Distribution Line Routes
	Segment Breaks
	1/4-mile from Project Components
	Community Center
	U.S. Bureau of Land Management
	Golf Course
	Museum
	Other
	Park
	Trail/Bike Path
	Morongo Indian Reservation

**West of Devers Upgrade Project**  
Figure D.15-1h  
**Recreational Resources, Segment 4 & 5**

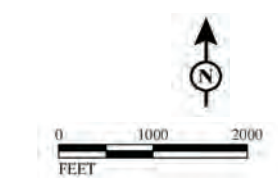


*This page intentionally blank.*





Source: SCE, 2013.



**LEGEND**

- Transmission Line Right of Way
- Transmission Line Right of Way to be Removed
- Proposed Alternative Transmission Line Right of Way
- Staging Yards
- Substations
- Junction
- Telecommunication Line Routes
- Relocated Subtransmission Line Routes
- Relocated Distribution Line Routes
- Segment Breaks
- 1/4-mile from Project Components
- Community Center
- U.S. Bureau of Land Management
- Golf Course
- Museum
- Other
- Park
- Trail/Bike Path
- Morongo Indian Reservation

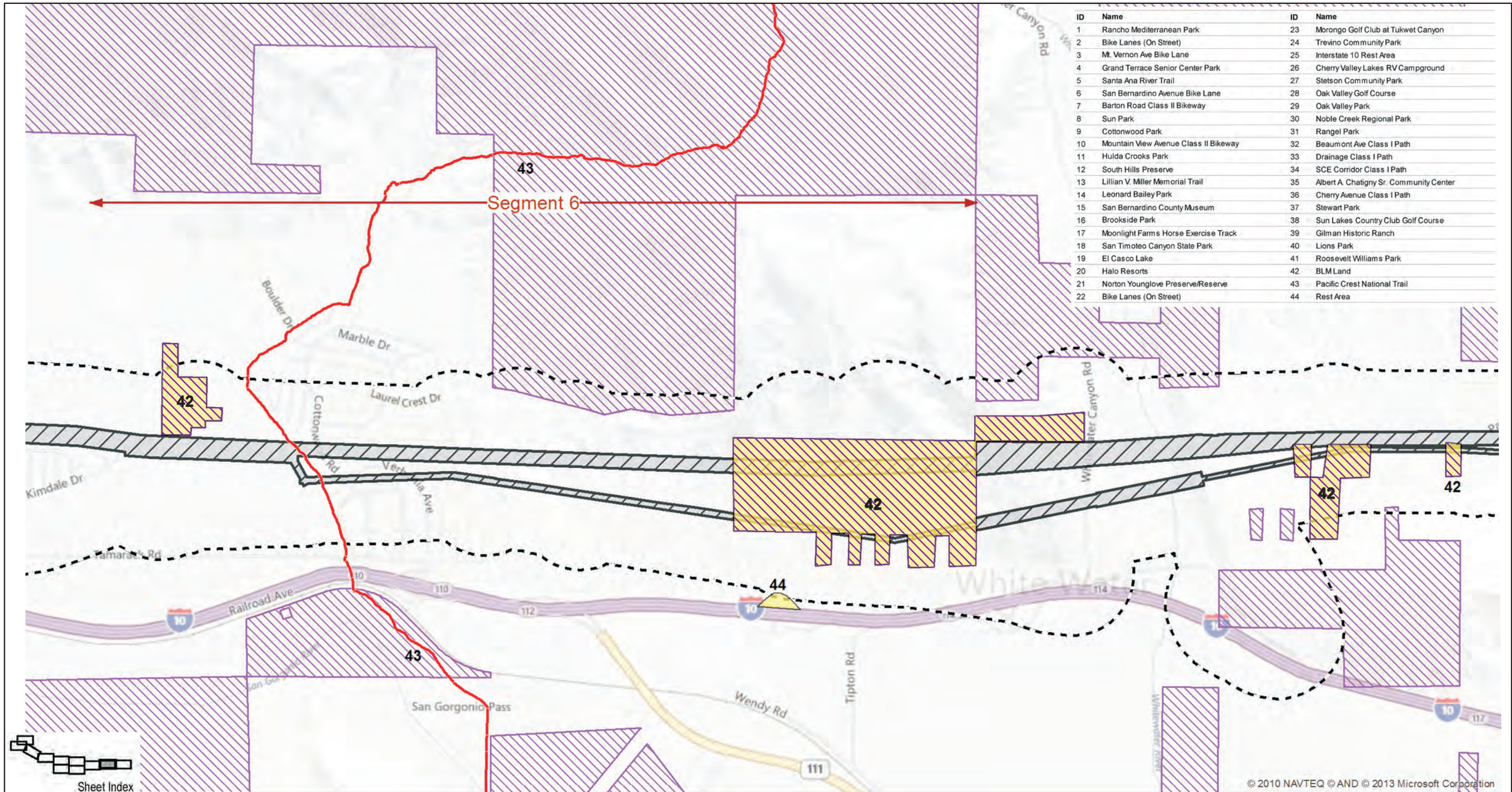
**West of Devers Upgrade Project**

Figure D.15-1i  
**Recreational Resources, Segment 5**



*This page intentionally blank.*





Source: SCE, 2013.

**LEGEND**

- Transmission Line Right of Way
- Transmission Line Right of Way to be Removed
- Proposed Transmission Line Right of Way
- Proposed Alternative Transmission Line Right of Way
- Proposed Transmission Line Right of Way Common to Both
- Staging Yards
- Substations
- Junction
- Telecommunication Line Routes
- Relocated Subtransmission Line Routes
- Relocated Distribution Line Routes
- Segment Breaks
- 1/4-mile from Project Components
- Recreational Resources
  - Community Center
  - U.S. Bureau of Land Management
  - Golf Course
  - Museum
  - Other
  - Park
  - Morongo Indian Reservation

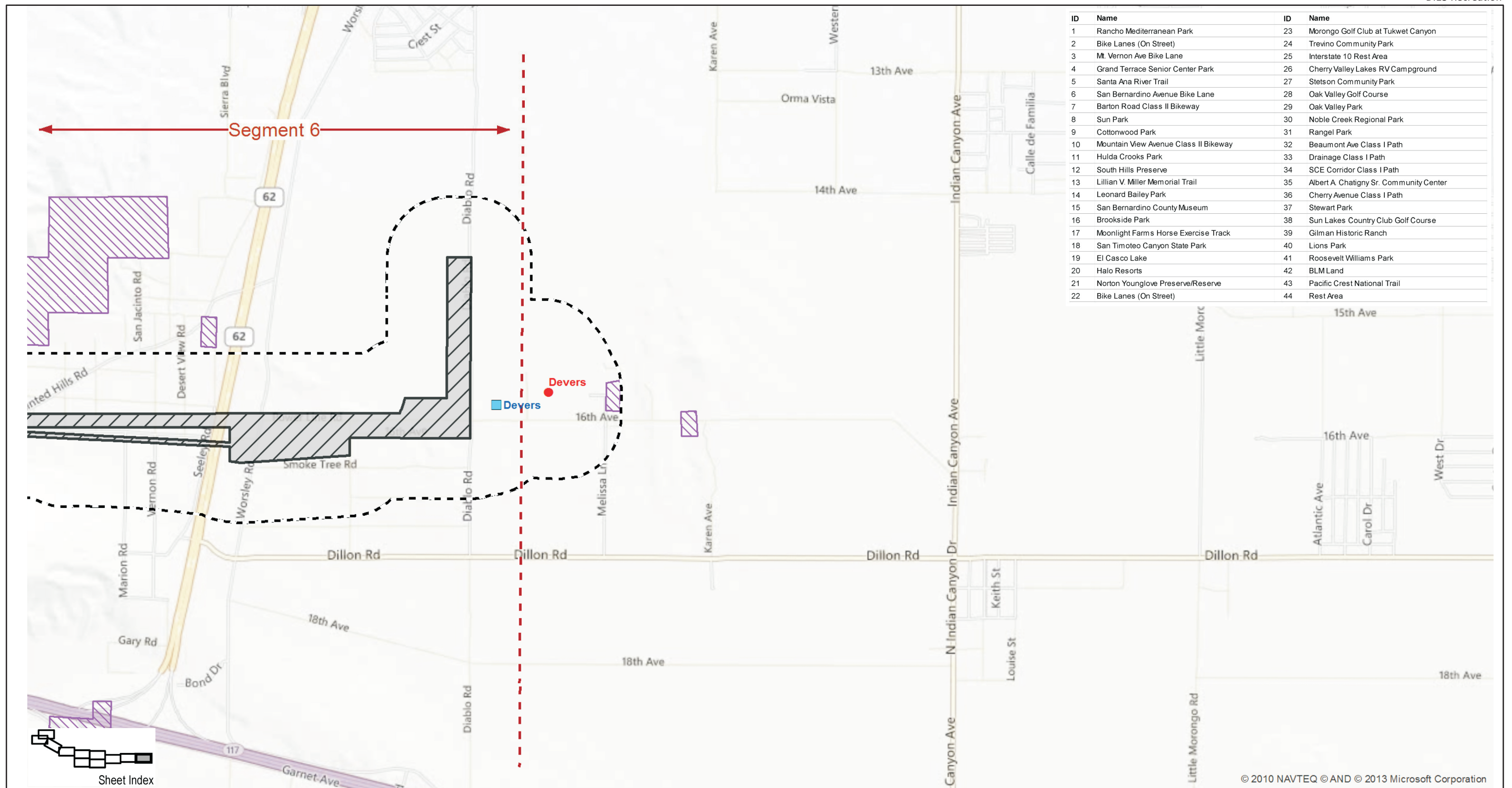
**West of Devers Upgrade Project**

Figure Ap.12D.15-1j

**Recreational Resources, Segment 6**



*This page intentionally blank.*



ID	Name	ID	Name
1	Rancho Mediterranean Park	23	Morongo Golf Club at Tukwet Canyon
2	Bike Lanes (On Street)	24	Trevino Community Park
3	Mt. Vernon Ave Bike Lane	25	Interstate 10 Rest Area
4	Grand Terrace Senior Center Park	26	Cherry Valley Lakes RV Campground
5	Santa Ana River Trail	27	Stetson Community Park
6	San Bernardino Avenue Bike Lane	28	Oak Valley Golf Course
7	Barton Road Class II Bikeway	29	Oak Valley Park
8	Sun Park	30	Noble Creek Regional Park
9	Cottonwood Park	31	Rangel Park
10	Mountain View Avenue Class II Bikeway	32	Beaumont Ave Class I Path
11	Hulda Crooks Park	33	Drainage Class I Path
12	South Hills Preserve	34	SCE Corridor Class I Path
13	Lillian V. Miller Memorial Trail	35	Albert A. Chatigny Sr. Community Center
14	Leonard Bailey Park	36	Cherry Avenue Class I Path
15	San Bernardino County Museum	37	Stewart Park
16	Brookside Park	38	Sun Lakes Country Club Golf Course
17	Moonlight Farms Horse Exercise Track	39	Gilman Historic Ranch
18	San Timoteo Canyon State Park	40	Lions Park
19	El Casco Lake	41	Roosevelt Williams Park
20	Halo Resorts	42	BLM Land
21	Norton Younglove Preserve/Reserve	43	Pacific Crest National Trail
22	Bike Lanes (On Street)	44	Rest Area

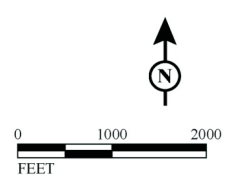
Sheet Index

© 2010 NAVTEQ © AND © 2013 Microsoft Corporation

Source: SCE, 2013.

**LEGEND**

- Transmission Line Right of Way
- Transmission Line Right of Way to be Removed
- Proposed Transmission Line Right of Way
- Proposed Alternative Transmission Line Right of Way
- Proposed Transmission Line Right of Way Common to Both
- Staging Yards
- Substations
- Junction
- Telecommunication Line Routes
- Relocated Subtransmission Line Routes
- Relocated Distribution Line Routes
- Segment Breaks
- 1/4-mile from Project Components
- Community Center
- U.S. Bureau of Land Management
- Golf Course
- Museum
- Other
- Park
- Trail/Bike Path
- Morongo Indian Reservation



**West of Devers Upgrade Project**

Figure D.15-1k

**Recreational Resources, Segment 6**

*This page intentionally blank.*