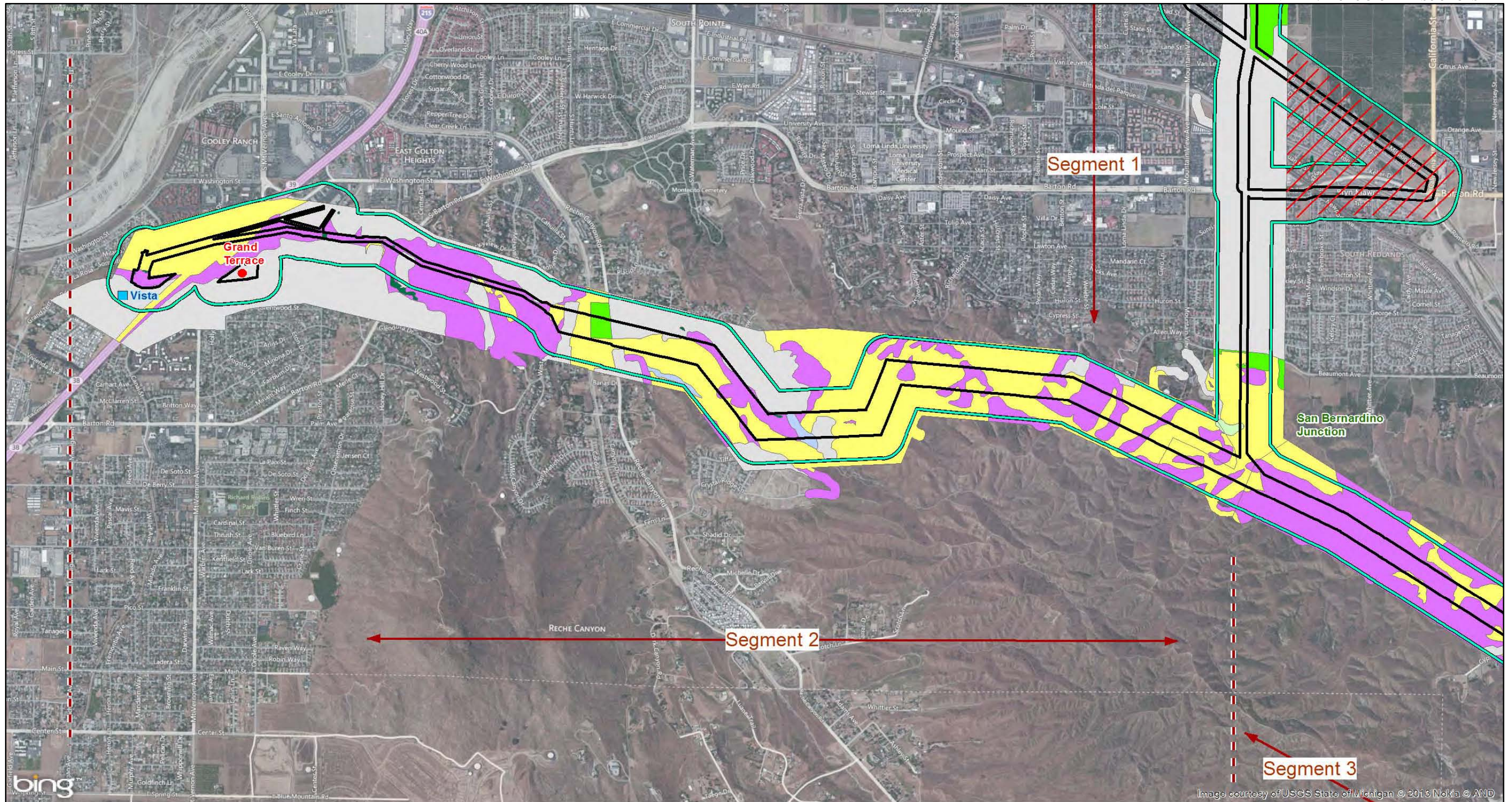


APPENDIX O
LAND COVER FIGURE

This Page Intentionally Left Blank

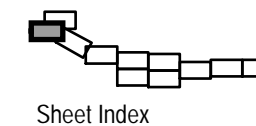


LEGEND

- West of Devers Study Area
- 500-foot Buffer
- Substations
- Staging Yards
- Segment Breaks
- Agriculture
- Alluvial Scrub
- Chaparral
- Coast Live Oak Woodland
- Coastal Sage Scrub
- Desert Scrub
- Developed/Disturbed
- Grassland/Forbland
- Open Water
- Riparian Woodland
- No Data
- Not Surveyed for Biological Resources
- Approximate Area of Summit Fire

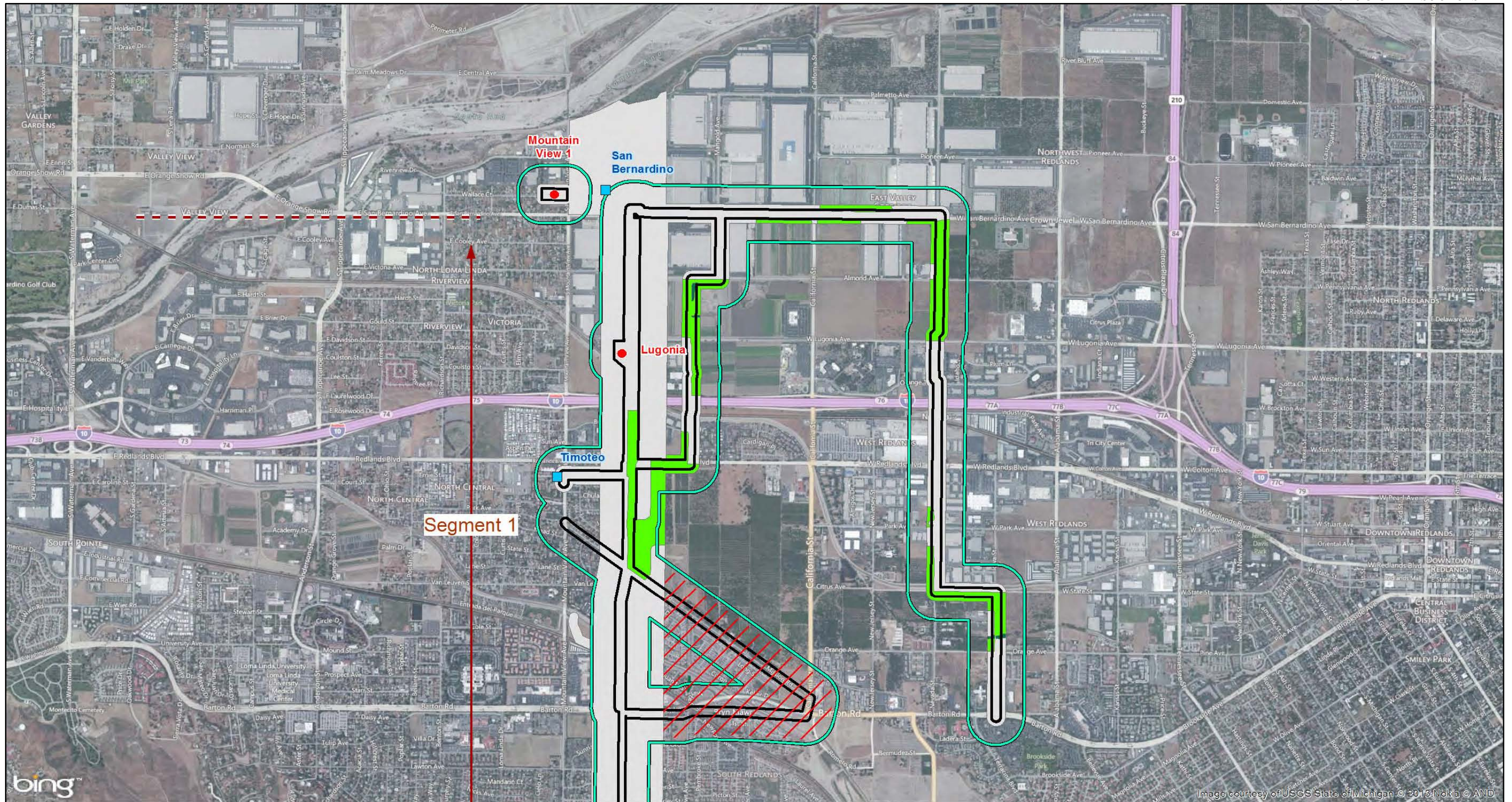
0 1000 2000 FEET

SOURCE: Bing Maps (2010); SCE (5/2013)



Sheet Index

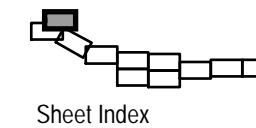
This Page Intentionally Left Blank



SOUTHERN CALIFORNIA EDISON
AN EDISON INTERNATIONAL™ Company

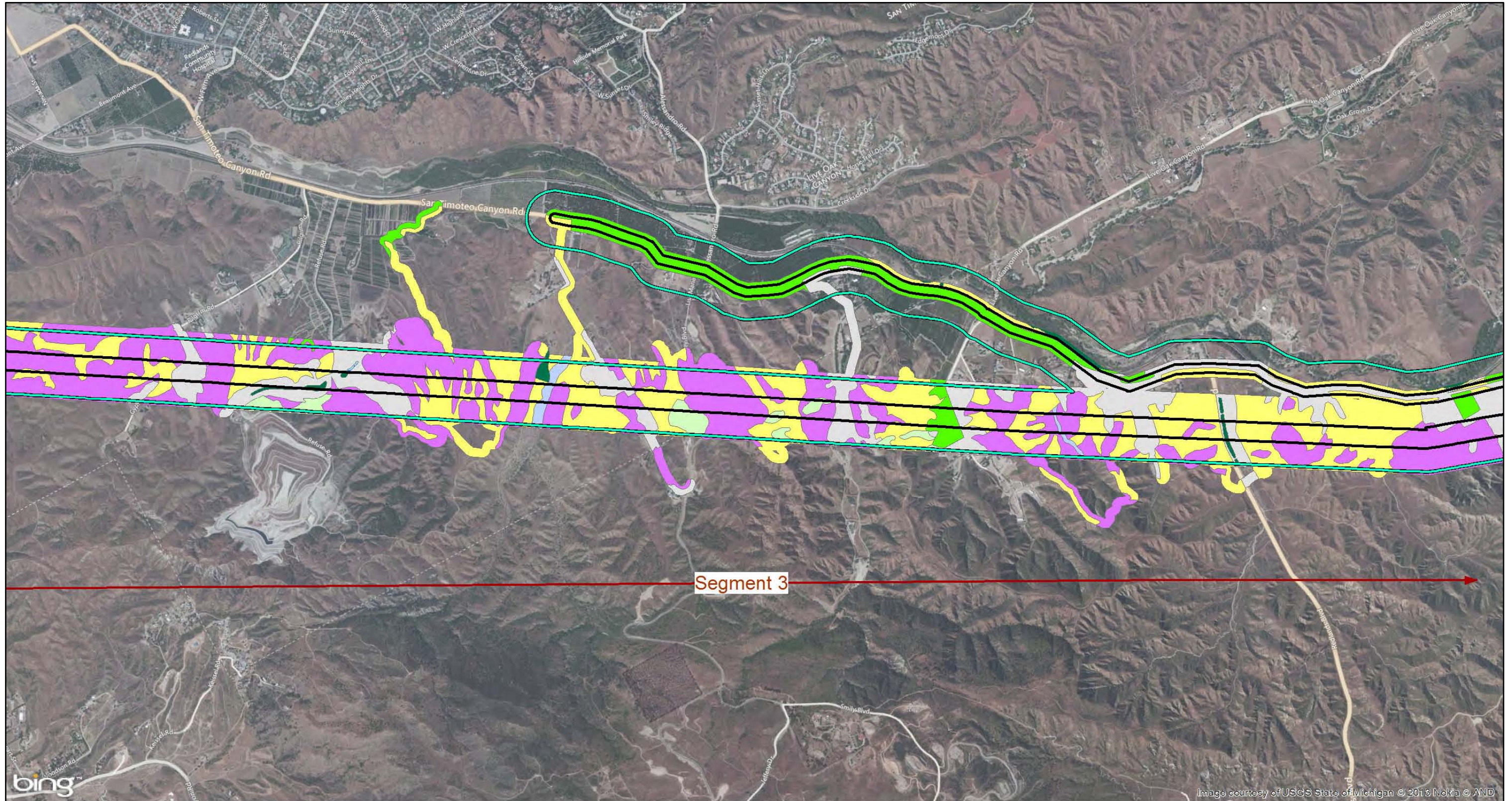
LEGEND

West of Devers Study Area	Agriculture	Coast Live Oak Woodland	Grassland/Forbland	Not Surveyed for Biological Resources
500-foot Buffer	Alluvial Scrub	Coastal Sage Scrub	Open Water	Approximate Area of Summit Fire
Substations	Chaparral	Desert Scrub	Riparian Woodland	
Staging Yards		Developed/Disturbed	No Data	
Segment Breaks				



SOURCE: Bing Maps (2010); SCE (5/2013)

This Page Intentionally Left Blank



SOUTHERN CALIFORNIA EDISON
AN EDISON INTERNATIONAL Company

LEGEND

<ul style="list-style-type: none"> West of Devers Study Area 500-foot Buffer Substations ● Staging Yards Segment Breaks 	<p>Vegetation Communities</p> <ul style="list-style-type: none"> Agriculture Alluvial Scrub Chaparral 	<ul style="list-style-type: none"> Coast Live Oak Woodland Coastal Sage Scrub Desert Scrub Developed/Disturbed 	<ul style="list-style-type: none"> Grassland/Forbland Open Water Riparian Woodland No Data 	<ul style="list-style-type: none"> Not Surveyed for Biological Resources Approximate Area of Summit Fire
---	--	--	--	---

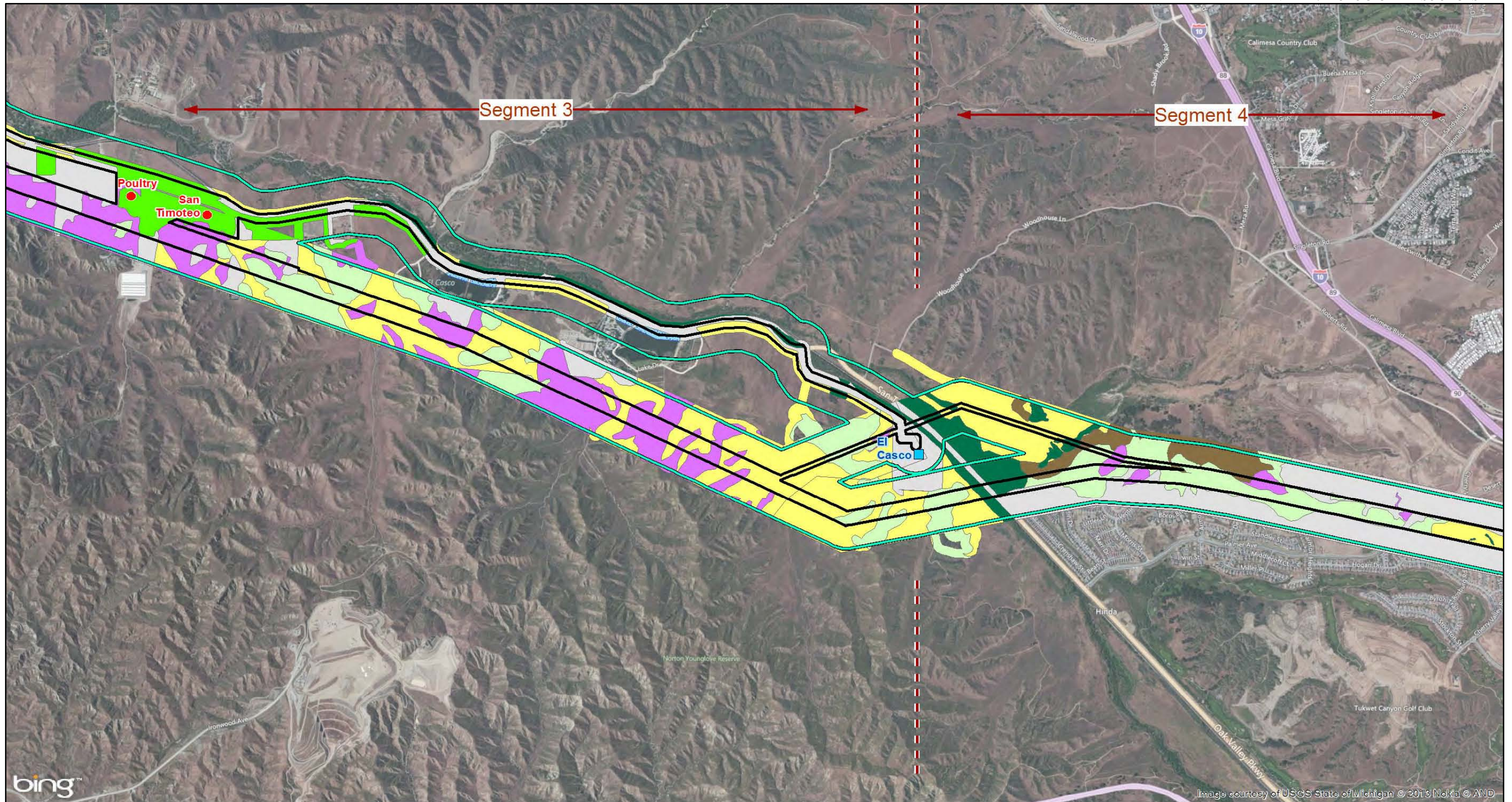
APPENDIX O
Sheet 3 of 11

Sheet Index

SOURCE: Bing Maps (2010); SCE (5/2013)

I:\SCE\1110\GIS\MXD\Biology\BRTR_Vegetation.mxd (9/30/2013)

This Page Intentionally Left Blank



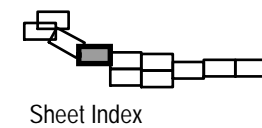
LEGEND

- | | | | | |
|---------------------------|----------------|-------------------------|--------------------|---------------------------------------|
| West of Devers Study Area | Agriculture | Coast Live Oak Woodland | Grassland/Forbland | Not Surveyed for Biological Resources |
| 500-foot Buffer | Alluvial Scrub | Coastal Sage Scrub | Open Water | Approximate Area of Summit Fire |
| Substations | Chaparral | Desert Scrub | Riparian Woodland | |
| Staging Yards | | Developed/Disturbed | No Data | |
| Segment Breaks | | | | |



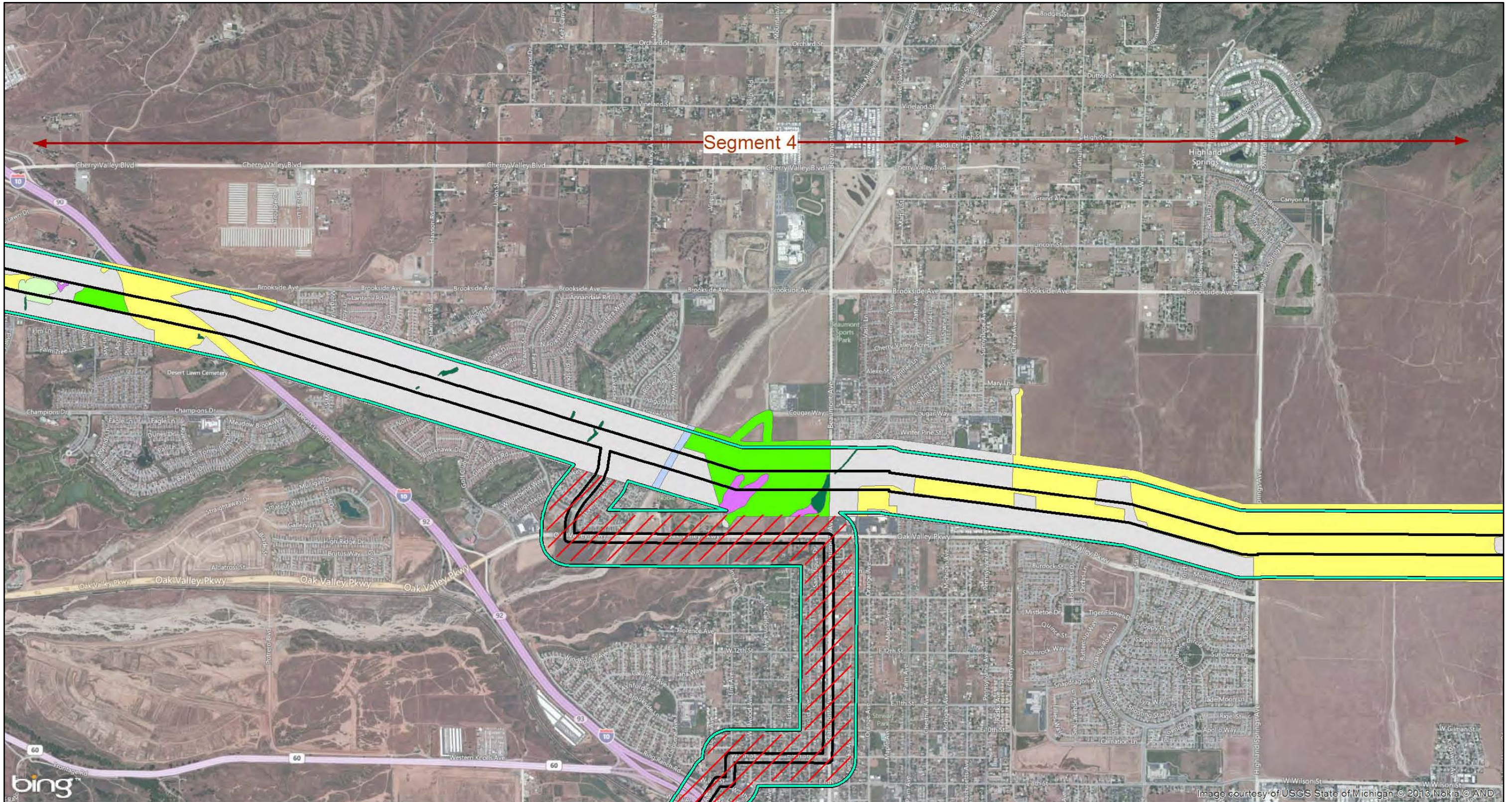
SOURCE: Bing Maps (2010); SCE (5/2013)

I:\SCE\1110\GIS\MXD\Biology\BRTR_Vegetation.mxd (9/30/2013)



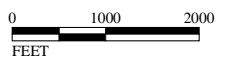
Sheet Index

This Page Intentionally Left Blank

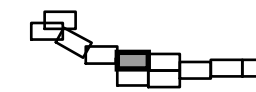


LEGEND

- | | | |
|---------------------------|---------------------|---------------------------------------|
| West of Devers Study Area | Grassland/Forbland | Not Surveyed for Biological Resources |
| 500-foot Buffer | Coastal Sage Scrub | Approximate Area of Summit Fire |
| Substations | Desert Scrub | |
| Staging Yards | Developed/Disturbed | |
| Segment Breaks | No Data | |
| Agriculture | Open Water | |
| Alluvial Scrub | Riparian Woodland | |
| Chaparral | | |

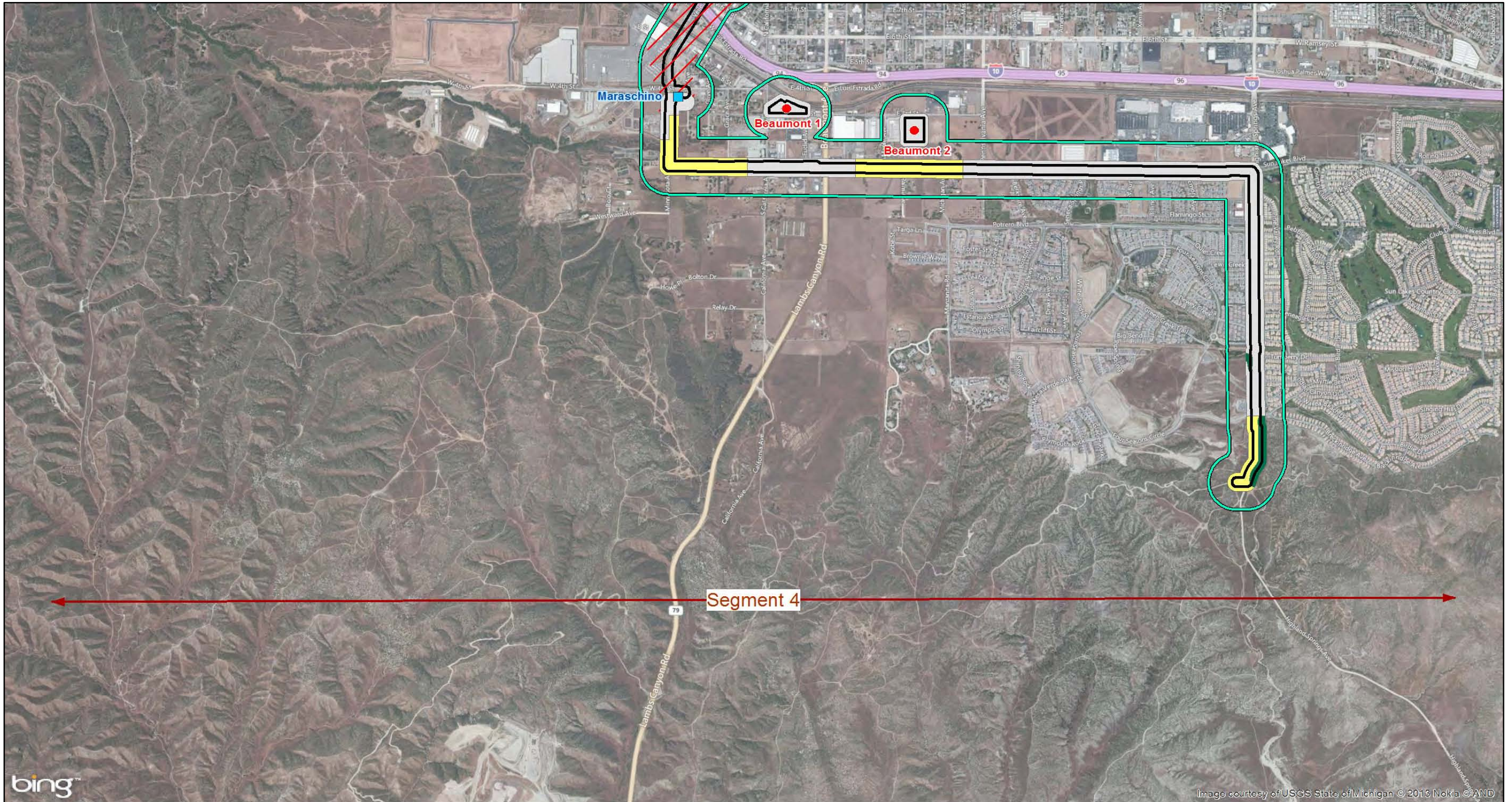


SOURCE: Bing Maps (2010); SCE (5/2013)



Sheet Index

This Page Intentionally Left Blank



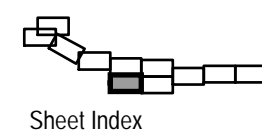
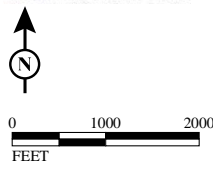
bing™

Image courtesy of USGS State of Michigan © 2013 Nokia © AND



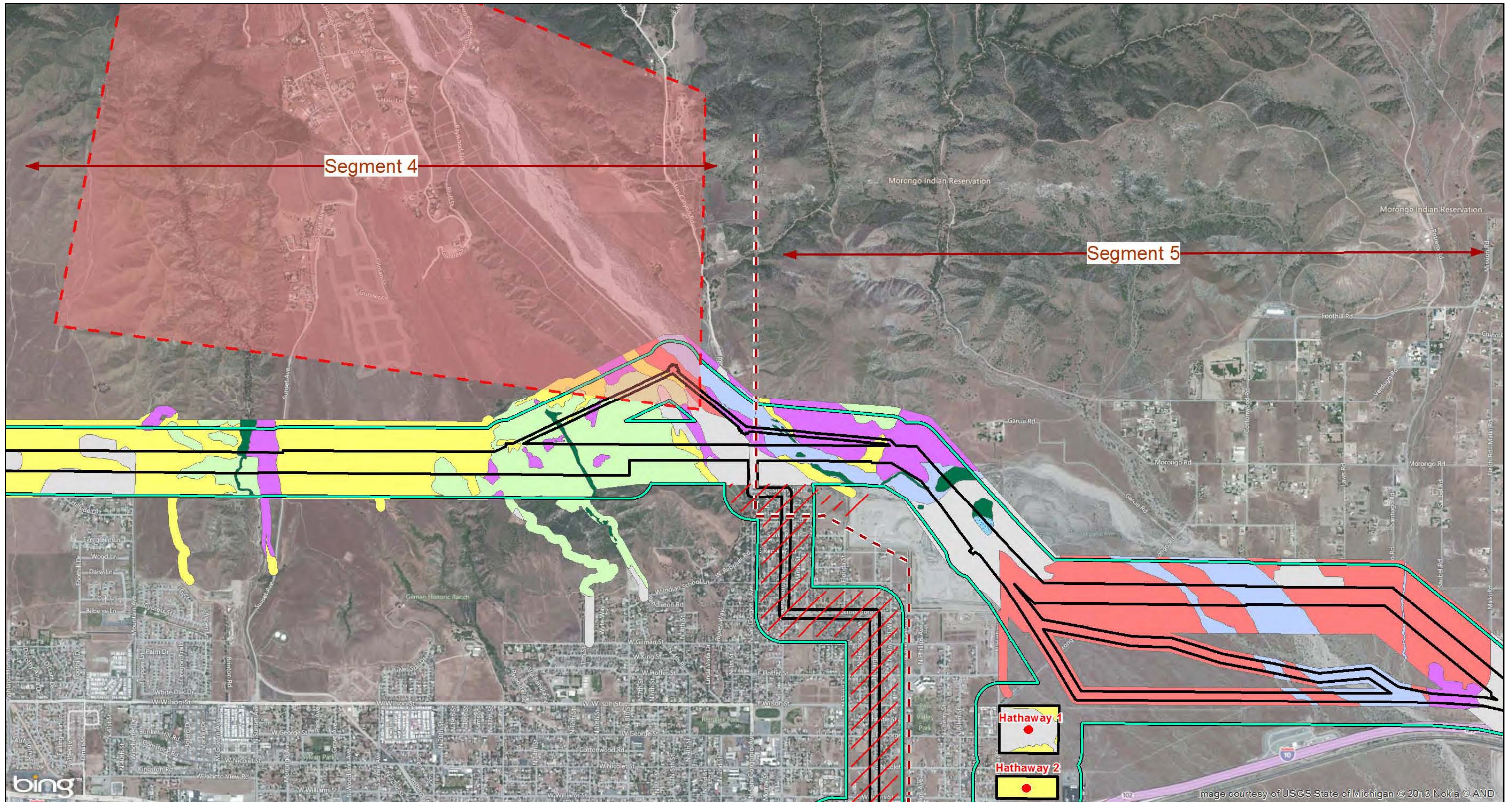
LEGEND

- | | | | | |
|---------------------------|----------------|-------------------------|--------------------|---------------------------------------|
| West of Devers Study Area | Agriculture | Coast Live Oak Woodland | Grassland/Forbland | Not Surveyed for Biological Resources |
| 500-foot Buffer | Alluvial Scrub | Coastal Sage Scrub | Open Water | Approximate Area of Summit Fire |
| Substations | Chaparral | Desert Scrub | Riparian Woodland | |
| Staging Yards | | Developed/Disturbed | No Data | |
| Segment Breaks | | | | |



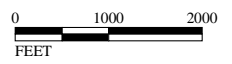
SOURCE: Bing Maps (2010); SCE (5/2013)

This Page Intentionally Left Blank



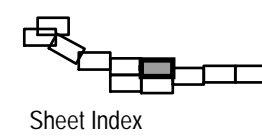
LEGEND

- | | | | | |
|---------------------------|----------------|-------------------------|--------------------|---------------------------------------|
| West of Devers Study Area | Agriculture | Coast Live Oak Woodland | Grassland/Forbland | Not Surveyed for Biological Resources |
| 500-foot Buffer | Alluvial Scrub | Coastal Sage Scrub | Open Water | Approximate Area of Summit Fire |
| Substations | Chaparral | Desert Scrub | Riparian Woodland | |
| Staging Yards | | Developed/Disturbed | No Data | |
| Segment Breaks | | | | |



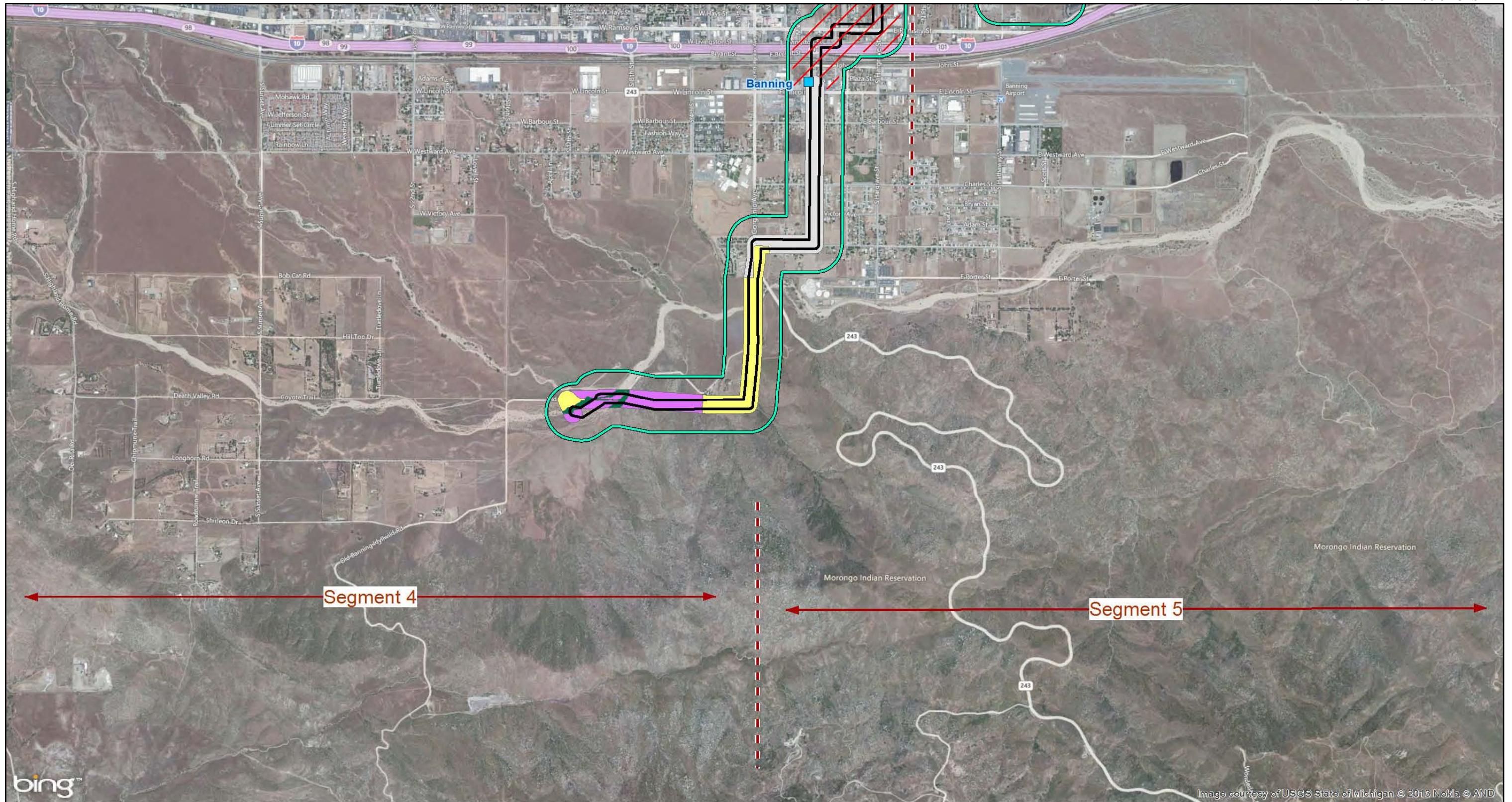
SOURCE: Bing Maps (2010); SCE (5/2013)

I:\SCE1110\GIS\MXD\Biology\BRTR_Vegetation.mxd (9/30/2013)



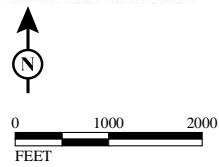
Sheet Index

This Page Intentionally Left Blank



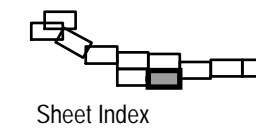
LEGEND

- | | | | | |
|---------------------------|-------------------------------|-------------------------|--------------------|---------------------------------------|
| West of Devers Study Area | Vegetation Communities | Coast Live Oak Woodland | Grassland/Forbland | Not Surveyed for Biological Resources |
| 500-foot Buffer | Agriculture | Coastal Sage Scrub | Open Water | Approximate Area of Summit Fire |
| Substations | Alluvial Scrub | Desert Scrub | Riparian Woodland | |
| Staging Yards | Chaparral | Developed/Disturbed | No Data | |
| Segment Breaks | | | | |



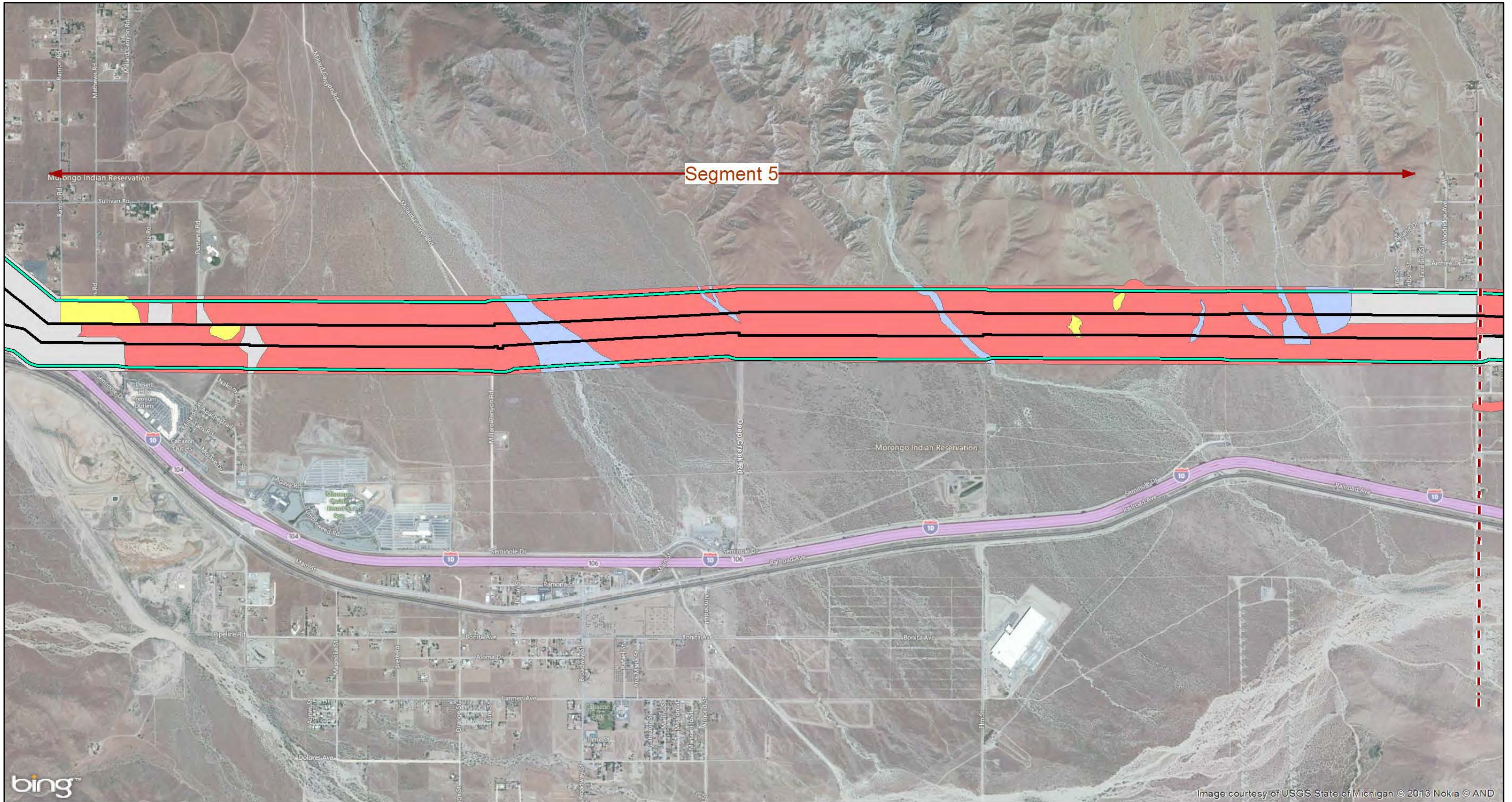
SOURCE: Bing Maps (2010); SCE (5/2013)

I:\SCE1110\GIS\MXD\Biology\BRTR_Vegetation.mxd (9/30/2013)



Sheet Index

This Page Intentionally Left Blank

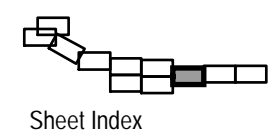


LEGEND

- | | | | | |
|---------------------------|----------------|-------------------------|--------------------|---------------------------------------|
| West of Devers Study Area | Agriculture | Coast Live Oak Woodland | Grassland/Forbland | Not Surveyed for Biological Resources |
| 500-foot Buffer | Alluvial Scrub | Coastal Sage Scrub | Open Water | Approximate Area of Summit Fire |
| Substations | Chaparral | Desert Scrub | Riparian Woodland | |
| Staging Yards | | Developed/Disturbed | No Data | |
| Segment Breaks | | | | |



SOURCE: Bing Maps (2010); SCE (5/2013)



Sheet Index

This Page Intentionally Left Blank

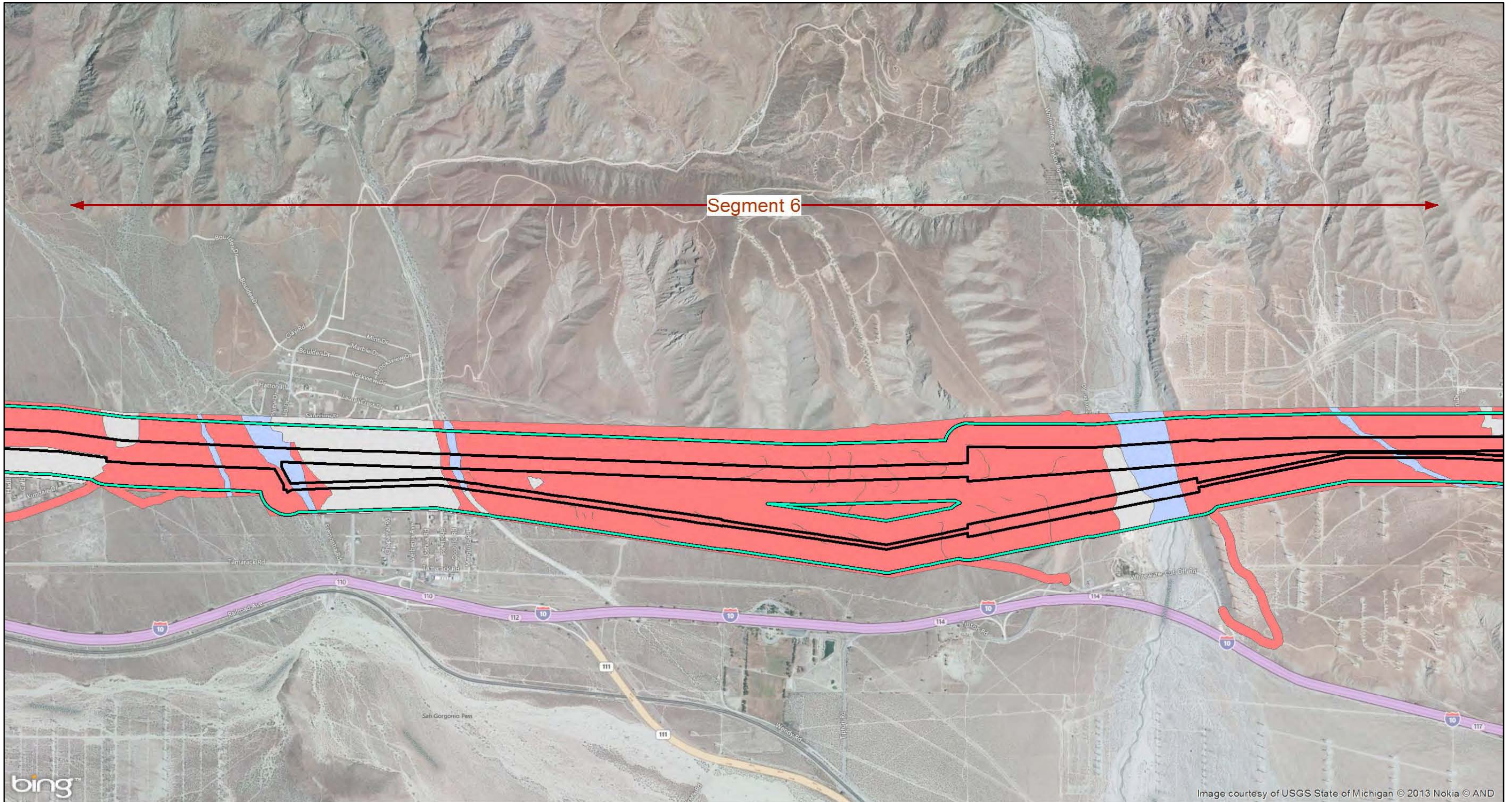
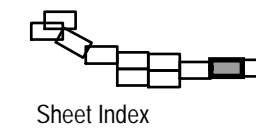
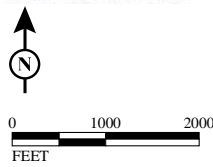


Image courtesy of USGS State of Michigan © 2013 Nokia © AND



LEGEND

- | | | | | |
|---------------------------|-------------------------------|-------------------------|--------------------|---------------------------------------|
| West of Devers Study Area | Vegetation Communities | Coast Live Oak Woodland | Grassland/Forbland | Not Surveyed for Biological Resources |
| 500-foot Buffer | Agriculture | Coastal Sage Scrub | Open Water | Approximate Area of Summit Fire |
| Substations | Alluvial Scrub | Desert Scrub | Riparian Woodland | |
| Staging Yards | Chaparral | Developed/Disturbed | No Data | |
| Segment Breaks | | | | |



APPENDIX O

Sheet 10 of 11

Southern California Edison
West of Devers Upgrade Project
Land Cover

SOURCE: Bing Maps (2010); SCE (5/2013)

I:\SCE1110\GIS\MXD\Biology\BRTR_Vegetation.mxd (9/30/2013)

Proponent's Environmental Assessment
West of Devers Upgrade Project

This Page Intentionally Left Blank

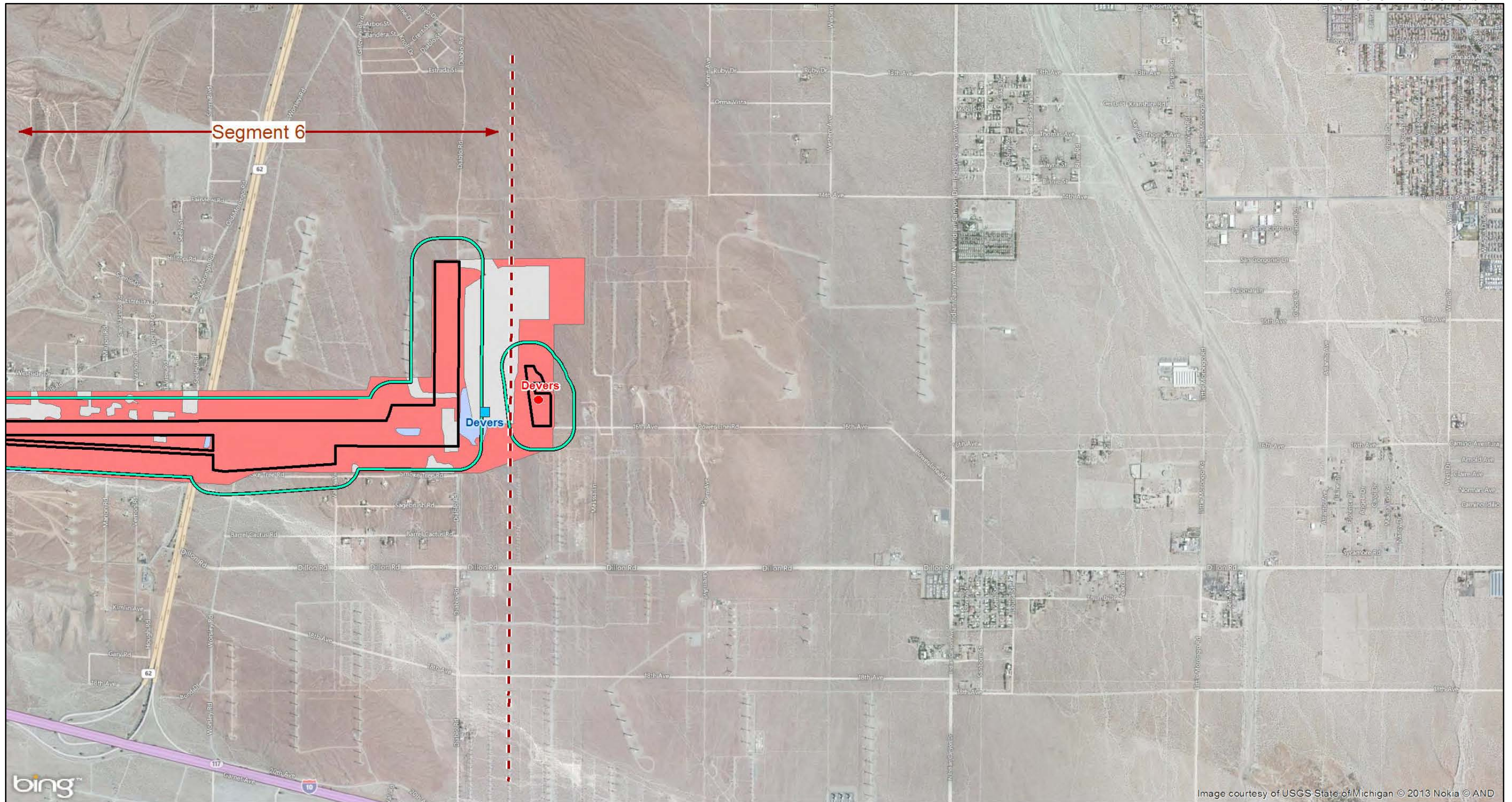
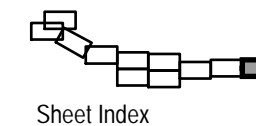
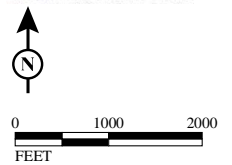


Image courtesy of USGS State of Michigan © 2013 Nokia © AND



LEGEND

- | | | | | |
|---------------------------|----------------|-------------------------|--------------------|---------------------------------------|
| West of Devers Study Area | Agriculture | Coast Live Oak Woodland | Grassland/Forbland | Not Surveyed for Biological Resources |
| 500-foot Buffer | Alluvial Scrub | Coastal Sage Scrub | Open Water | Approximate Area of Summit Fire |
| Substations | Chaparral | Desert Scrub | Riparian Woodland | |
| Staging Yards | | Developed/Disturbed | No Data | |
| Segment Breaks | | | | |



SOURCE: Bing Maps (2010); SCE (5/2013)

This Page Intentionally Left Blank