



5020 Chesebro Road, Suite 200, Agoura Hills, CA 91301-2285
Tel. 818-597-3407 • Fax 818-597-8001 • www.aspeneg.com

PROJECT MEMORANDUM
SCE WEST OF DEVERS UPGRADE PROJECT

Date: October 19, 2018
To: Billie Blanchard, Project Manager, CPUC
From: Vida Strong, Aspen Project Manager
Subject: Monitoring Report #36: October 8 to 14, 2018

Introduction

This report provides a summary of the construction and compliance activities associated with Southern California Edison’s (SCE) West of Devers (WOD) Upgrade Project. As of the closing of this monitoring period, SCE estimates total project completion at approximately eight percent.

CPUC Environmental Monitor (EM): CPUC EM Jamie Miner was onsite October 8, 9, and 11, 2018.

CPUC Notices to Proceed (NTPs)

Table 1 summarizes the NTPs with construction for the WOD Upgrade Project.

Table 1 - NTPs
(Updated 10/19/18)

NTP #	Date Requested	Date Issued	Phase	Description
NTP #1	04/04/17	06/29/17	Material Yards	Construction or use of 10 Material Yards
NTP #2	05/18/17	06/29/17	Substation Upgrades	Upgrades to 5 existing Substations
NTP #3	06/05/17	08/10/17	Distribution, Subtransmission, and Telecom	Construction of the Distribution, Subtransmission, and Telecommunication portions of the Project
NTP #4	07/13/17	09/05/17	Transmission	Transmission Line Construction on private lands
NTP #5	08/07/17	03/29/18	Construction on BLM lands	Transmission Line construction on BLM lands

Construction & Compliance

A summary of construction and compliance activities is provided below by NTP.

Material Yards (NTP #1)

As defined in NTP #1, Project material yards (MY) include:

- Mountain View #1 MY
- Lugonia MY
- Grand Terrace MY
- Poultry MY
- San Timoteo MY
- Beaumont #1 MY

- Beaumont #2 MY
- Matich MY
- Hathaway #2 MY
- Devers MY

To date, all material yard pre-compliance materials associated with NTP #1 that have been submitted, have been approved.

Summary of Construction Activity

1. For the currently approved MYs, all activities are being performed by the contractor operating out of each respective yard. No MY construction activities were conducted during the subject reporting period.
2. The Poultry MY is being utilized by Barnard Construction and Power Grade Incorporated as their primary base of operations and material/equipment storage location. Work associated with the Poultry MY included material/equipment deliveries and general yard maintenance throughout the monitoring period. Helicopter operations out of Poultry MY continued throughout the monitoring period.
3. The Matich MY is being utilized by Barnard Construction primarily for tubular steel pole (TSP) storage. Work associated with the Matich MY included material/equipment deliveries throughout the monitoring period.
4. The Mountain View #1 MY is being utilized by Hot Line Construction as their primary base of operations and materials/equipment storage location. Work associated with the Mountain View #1 MY was limited to material/equipment deliveries and general yard maintenance throughout the monitoring period.
5. The Beaumont #2 MY is being utilized by CJ/Aldridge Drilling as their primary base of operations and material/equipment storage location. Material/equipment deliveries and general yard maintenance occurred at the Beaumont #2 MY throughout the monitoring period.
6. The Grand Terrace MY is being used primarily as a show-up location for project construction crews. No project-related activities occurred at the Grand Terrace MY throughout the monitoring period.
7. No project-related activities occurred at the Devers MY throughout the monitoring period.

Environmental Compliance

1. There were no SCE self-reported or CPUC incidents documented for construction activities associated with NTP #1 throughout the monitoring period.
2. There were no SWPPP maintenance items or corrective actions associated with NTP #1 recorded during the monitoring period. To date, there are no open SWPPP maintenance items or corrective actions associated with NTP #1.
3. There were no reportable (> 1 gallon) and no non-reportable (< 1 gallon) spills associated with NTP #1 identified during the monitoring period.
4. The 2018 nesting season has ended. If required, removal of inactive non-special-status bird species' nests is being implemented per the requirements of the Project Nesting Bird Management Plan (NBMP). There were no such nests removed from work areas associated with NTP #1 recorded during the monitoring period.
5. No special-status species were observed or identified at locations associated with NTP #1 during the monitoring period.

Substations (NTP #2)

Five substations are identified for improvements in NTP #2. These include:

- Etiwanda Substation
- San Bernardino Substation
- Vista Substation
- El Casco Substation
- Devers Substation

The preconstruction packages for the Etiwanda, Vista, and Devers Substations were submitted by SCE on July 23, 2018. CPUC authorization for each of these substation was granted on July 26, 2018.

Summary of Construction Activity

1. For the currently approved substation components, all work is being managed by Circle Wood Services with construction support from TTR Substations.
2. Work associated with the Devers Substation was limited to adjusting disconnects at Position #9.
3. No construction activities associated with the Vista Substation occurred throughout the monitoring period.
4. No construction activities associated with the Etiwanda Substation occurred throughout the monitoring period.
5. No construction activities associated with the San Bernardino Substation occurred throughout the monitoring period.
6. No construction activities associated with the El Casco Substation occurred throughout the monitoring period.

Environmental Compliance

1. There were no SCE self-reported or CPUC incidents documented for construction activities associated with NTP #2 throughout the monitoring period.
2. There were no SWPPP maintenance items or corrective actions associated with NTP #2 recorded during the monitoring period. To date, there are no open SWPPP maintenance items or corrective actions associated with NTP #2.
3. There were no reportable (> 1 gallon) and one non-reportable (< 1 gallon) spills associated with NTP #2 identified during the monitoring period. The non-reportable spill occurred on October 10 at the Devers Substation and consisted of less than one quart of hydraulic fluid. SCE's Spill Report indicated that impacted soils were bagged and placed in a 55-gallon drum at the Devers Substation for offsite disposal.
4. The 2018 nesting season has ended. If required, removal of inactive non-special-status bird species' nests is being implemented per the requirements of the NBMP. There were no such nests removed from work areas associated with NTP #2 recorded during the monitoring period.
5. No special-status species were observed or identified at locations associated with NTP #2 during the monitoring period.

Distribution, Subtransmission, and Telecommunication Work (NTP #3)

As defined in NTP #3, distribution improvements consist of three work packages. These include:

- Dental 12-kV Distribution Circuit (Dental Circuit)
- Intern 12-kV Distribution Circuit Underbuild (Intern Circuit)
- Reconductor on Juanita Street (Juanita Reconductor)

As defined in NTP #3, subtransmission improvements consist of three work packages. These include:

- Removal of San Bernardino–Redlands-Timoteo and the San Bernardino–Redlands-Tennessee 66-kV Lines (Timoteo-Tennessee Removal)
- Relocation of San Bernardino–Redlands-Timoteo 66-kV Lines (Timoteo Relocation)
- Relocation of San Bernardino–Redlands-Tennessee 66-kV Lines (Tennessee Relocation)

As defined in NTP #3, telecommunication improvements consist of six work packages. These include:

- San Bernardino Substation Connection to Redlands Inland Empire District Office (San Bernardino Connection),
- Timoteo-Redlands District Office Fiber Optic Cable Connection (Timoteo-Redlands Connection),
- El Casco Substation Connection to Vista Moreno OPGW (El Casco Connection),
- Maraschino Substation Connection to Devers-Valley OPGW (Maraschino Connection),
- El Casco–Banning Connection to Devers-Vista Skywrap (El Casco–Banning Connection), and
- Banning Substation Connection to Devers-Valley OPGW (Banning Connection).

To date, all telecommunication, distribution, and subtransmission pre-compliance materials associated with NTP #3 have been submitted and approved.

Summary of Construction Activity

1. For the currently approved subtransmission and distribution components, major construction activities are being performed by Hot Line Construction.
2. Distribution work associated with the Dental and Intern Circuits included trenching for underground alignment, installation of underground vault components, installation of underground conduit, construction of riser pole connections, and concrete restoration.
3. Work associated with the Timoteo Relocation subtransmission improvements included potholing for existing utilities and block wall and concrete restoration (see Photo 1).
4. Work associated with the Tennessee Relocation subtransmission improvements included potholing for existing utilities, erection of lightweight tubular steel poles (LWTSPs) and tubular steel poles (TSPs), installation of overhead conductor wire, and concrete restoration (see Photo 2).
5. No construction activities associated with the Timoteo-Tennessee Removal occurred throughout the monitoring period.
6. No construction activities associated with the San Bernardino Connection occurred throughout the monitoring period.

7. No construction activities associated with the Timoteo-Redlands Connection occurred throughout the monitoring period.
8. No construction activities associated with the El Casco Connection occurred throughout the monitoring period.
9. No construction activities associated with the Banning Connection occurred throughout the monitoring period.
10. Work associated with the Juanita Reconductor distribution improvements has been completed.
11. Work associated with the Maraschino Connection telecommunications improvements has been completed.
12. Work associated with the El Casco–Banning Connection telecommunications improvements has been completed.
13. As of the closing of this monitoring period, the construction progress of components associated with NTP #3 is as follows:
 - For distribution components, all 19 12-kV poles have been framed, all 12 12-kV underground vaults have been installed, and 4890 feet of 7430 feet of 12-kV duct bank (conduit) has been installed.
 - For subtransmission components, 117 of 119 66-kV LWTSPs have been erected, 19 of 19 TSPs have been erected, and 19,855 feet of 27,140 feet of 66-kV wire has been installed.

Environmental Compliance

1. There were no SCE self-reported or CPUC incidents documented for construction activities associated with NTP #3 throughout the monitoring period.
2. Two cultural resource discoveries were reported during the monitoring period. According to information provided by SCE, each of these discoveries was identified as “non-significant” by the SCE Senior Archaeologist.
3. Due to power loading issues associated with hot weather, line outages in place to perform underground conductor wire installation are being periodically rescheduled to overnight hours. A revised encroachment permit from the City of Redlands, which included approval for overnight work associated with installation of underground cable only, was provided on July 25, 2018.
4. On October 11, SCE submitted approval from the City of Loma Linda for work to be conducted on October 14 between 1:00 a.m. and 10:00 a.m. (outside of approved hours) associated with erecting a TSP along the Timoteo Relocation.
5. There were no SWPPP maintenance items or corrective actions associated with NTP #3 recorded during the monitoring period. To date, there are no open SWPPP maintenance items or corrective actions associated with NTP #3.
6. There were no reportable (> 1 gallon) or non-reportable (< 1 gallon) spills associated with NTP #3 identified during the monitoring period.
7. The 2018 nesting season has ended. If required, removal of inactive non-special-status bird species’ nests is being implemented per the requirements of the NBMP. There were no such nests removed from work areas associated with NTP #3 recorded during the monitoring period.
8. No special-status species were observed or identified at locations associated with NTP #3 during the monitoring period.

Transmission Work (NTP #4)

NTP #4 includes six transmission line segments, identified as Segments 1 through 6, generally moving from west to east.

To date, pre-compliance materials associated with NTP #4, Segments 1 through 5, have been submitted and approved. Pre-construction compliance materials for Segment 6 are scheduled for submittal late-2018/early-2019.

Summary of Construction Activity

1. For the currently approved transmission components, Power Grade Incorporated is conducting access road maintenance/stabilization, BMP installation, vegetation removal, and site grading. CJ/Aldridge Drilling is performing foundation work. Abercrombie Services is assembling and erecting new towers, and conducting wire operations with support from Summit Helicopters. Cunningham Davis Corporation is removing existing towers and foundations.
2. Work associated with Segment 1 included grading activities and irrigation line repairs at Site 1X04-1X05.
3. No construction activities associated with Segment 2 were conducted throughout the monitoring period.
4. Work associated with Segment 3 included access road maintenance between Sites 3X50 and 3X62 (see Photo 3). BMP installation occurred at Sites 3X59, 3X60, 3X61, 3X62-S, and 3X64-S. Grading activities occurred at Sites 3X46, 3X57, 3X59, 3X60, and 3X61 (see Photo 4). No access road improvements were conducted.
5. Work associated with Segment 4 included vegetation removal at Site WSS-4N64. Grading activities were performed at Site 4N64. Foundation drilling was conducted at Site 4S60. Concrete foundation pouring occurred at Sites 4S60 and 4N61. Tower assembly and/or erection was performed at Sites 4X54 and 4N64. Tower and foundation demolition was conducted at Sites 4N62 and 4N63 (see Photo 5). Wire stringing activities occurred between Sites 4X55 and 4N64 (see Photo 6). No access road improvements were conducted.
6. To date, no construction activities associated with Segments 5 or 6 have occurred.
7. As of the closing of this monitoring period, construction progress associated with NTP #4 is as follows:
 - Grading of 5.2 miles and 0.3 miles of access road has been completed in Segments 3 and 4, respectively.
 - Grading for foundation installation has been completed at 83 sites.
 - Foundations are completed for 15 of 386 lattice towers and 2 of 83 TSPs.
 - Erection of 3 of 386 lattice towers has been completed.
 - Erection of 6 of 51 TSPs and 4 of 58 ESPs for temporary shoofly locations has been completed.
 - Stringing of approximately 0.3 circuit miles has been completed.
 - Demolition of 2 of 602 existing structures and 2 of 415 existing foundations has been completed.
 - Wire wreck-out has been completed along 1.3 circuit miles.
8. The first proposed outage (Project Move 2) began on October 1, 2018 and is scheduled through December 11, 2018. Final CAISO approval has been issued for this outage.

Environmental Compliance

1. There were no SCE self-reported and no CPUC incidents documented for construction activities associated with NTP #4 throughout the monitoring period (see Photo 7).
2. On October 11, the CPUC EM observed foundation cages that had been staged outside of approved disturbance limits near the access road associated with Site 3X20 (see Photo 8). The CPUC EM immediately notified the SCE Lead Field Biologist who coordinated with construction crews to relocate the material to an approved location. According to SCE, construction has since instituted a new protocol where SCE Environmental Monitors will be notified prior to staging materials outside of staked tower sites.
3. Documentation of FAA Determinations for Segment 4 was provided on September 17. Additional information was provided on September 26 and is currently under review.
4. There was one SWPPP maintenance items and no corrective actions associated with NTP #4 recorded during the monitoring period. The maintenance items were all identified on October 10 and consisted of damaged pro-wattle BMPs at Site 4N64. SCE reported that the damaged BMPs were repaired on October 11. To date, there are no open SWPPP maintenance items or corrective actions associated with NTP #4.
5. There were no reportable (> 1 gallon) or non-reportable (<1 gallon) spills associated with NTP #4 identified during the monitoring period.
6. The 2018 nesting season has ended. If required, removal of inactive non-special-status bird species' nests is being implemented per the requirements of the NBMP. There were 7 such nests removed from work areas associated with NTP #4 recorded during the monitoring period.
7. Special-status species observed or identified at locations associated with NTP #4 during the monitoring period included ringneck snake.

Transmission Work BLM Lands (NTP #5)

NTP #5 includes the portion of one transmission line segment, identified as Segment 6, which traverses properties managed by the Bureau of Land Management (BLM). NTP #5 was approved by BLM on March 29, 2018. To date, no work authorized by NTP #5 has been requested or has occurred.

Temporary Extra Workspaces (TEWS) and Minor Project Refinements (MPRs)

Table 2 summarizes the TEWS and MPRs for the WOD Upgrade Project to date.

Table 2 - TEWS & MPRs
(Updated 10/19/18)

TEWS / MPC	Date Requested	Date Issued	Phase	Description
Temporary Extra Workspaces (TEWS)				
TEWS #1	10-12-17	10-19-17	Maraschino Connection	Access to Beaumont Cherry Valley District water hydrant meter located near the intersection of Highland Springs Avenue and Crooked Creek, Beaumont.
TEWS #2	11-13-17	11-21-17	El Casco– Banning Connection	Water source on Oak Valley Boulevard.

TEWS / MPC	Date Requested	Date Issued	Phase	Description
TEWS #3	12-15-17	12-15-17	Banning Connection	Access to existing poles off of Lincoln Street.
TEWS #4	12-18-17	12-18-17	Banning Connection	Access to existing poles off of Wesley Street.
TEWS #5	12-20-17	12-21-17	Banning Connection	Access to existing poles at intersection of Wesley Street and Old Idyllwild Road
TEWS #6	6-13-18	6-13-18	Timoteo Relocation	Extra workspace to facilitate erection of TSP #4696058 at intersection of Redlands Boulevard and Bryn Mawr Street
TEWS #7	7-27-18	7-30-18	Timoteo Relocation	Extra workspace to facilitate wire pulling activities along Research Drive and Almond Avenue
TEWS #8	8-27-18	8-28-18	Dental/Intern Circuits	DENIED AND RESCINDED – Extra workspace to facilitate construction along Mission Road
TEWS #9	10-18-18	10-19-18	Timoteo Relocation	Extra workspace for walking path at Bryn Mawr and I-10
Minor Project Refinements (MPRs)				
MPR #1	11-17-17	11-22-17	Maraschino Connection	Revisions to the amount of new underground telecom construction.
MPR #2	12-13-17	12-15-17	Maraschino Connection	Addition of two vault work areas on Highland Springs Road.
MPR #3	12-21-17	12-28-17	El Casco– Banning Connection	Adjustments to alignment along Oak Valley Parkway
MPR #4	12-27-17	1-3-18	Maraschino/ El Casco– Banning Connections	Continued use of two fire hydrants previously approved as TEWS #1 and TEWS #2
MPR #5	1-16-18	1-22-18	Banning Connection	Continued use of access routes described in TEWS #3, 4, and 5 and temporary access paths through private property along Coyote Trail
MPR #6	2-8-18	2-12-18	Project-wide	Use of 10 water sources to support construction activities
MPR #7	2-23-18	2-28-18	Poultry MY	Temporary water and electrical supply to yard
MPR #8	2-27-18	3-2-18	El Casco Connection/ Segment 1	New telecom splice location and single new steel pole installation
MPR #9	3-26-18	3-27-18	El Casco Connection	Telecom work areas along El Casco Substation access road
MPR #10	4-6-18	4-9-18	Mountain View #1 MY/All subtrans	Additional work spaces at Mountain View #1 MY entry and at subtransmission improvements work areas

TEWS / MPC	Date Requested	Date Issued	Phase	Description
MPR #11	5-4-18	5-8-18	Tennessee Relocation	Relocation of 5 subtransmission structures from the east side to the west side of Nevada Street
MPR #12	5-14-18	5-16-18	Timoteo Relocation	Additional work space for TSP erection at Bryn Mawr Avenue and Interstate 10.
MPR #13	5-23-18	5-25-18	Project-wide	Addition of encased fire hose to O'Grady Court water source and use of 17 water sources to support construction activities
MPR #14	5-24-18	5-31-18	Timoteo/ Tennessee Relocations	Location shift of 3 TSPs and 1 vault location
MPR #15	5-31-18	6-4-18	Poultry MY	Paving of access road and trailer complex area
MPR #16	6-11-18	6-13-18	Banning Connection	Shift of horizontal directional drilling (HDD) alignment through Smith Creek and addition of walking paths along Coyote Trail
MPR #17	6-20-18	6-22-18	Dental Circuit/ Tennessee Relocation	Additional work space along Mission Road, Lugonia Avenue, and Nevada Street
MPR #18	8-3-18	8-7-18	Timoteo Relocation/ Beaumont #2 MY	Expansion of vault installation work area off Mountain View Avenue and new water source near Beaumont #2 MY
MPR #19	8-13-18	8-20-18	Segment 4	Additional work space requests at Sites 4N58, 4N59, and 4N64
MPR #20	8-21-18	8-27-18	Banning Connection	Use of unpaved access road west of Smith Creek
MPR #21	10-4-18	10-10-18	Project-wide/ Segments 3&4	Use of 6 water sources, installation of water tank, use of access road, and expansion of WSS

CPUC Compliance Incidents, Project Memoranda (PMs) and Non-Compliance Reports (NCRs)

Table 3 summarizes the CPUC Incidents, PMs, and NCRs issued to date.

Table 3
CPUC Incidents, Project Memoranda, and Non-Compliance Reports
(Updated 10/19/18)

Incident/ PM/NCR	Regulatory Requirement	Date Issued	Phase	Description
Level 1 Incident	Traffic Control Plan	01-30-18	Banning Connection	Traffic control was set up in such a way that diverted flow into active work area and deviated from approved Traffic Control Plan.
Level 1 Incident	MM WIL-1b	04-19-18	Timoteo/ Tennessee Relocation	A portable water tank was observed uncovered for four consecutive days.
Level 1 Incident	MM VEG-1a	5-24-18	El Casco Substation	Equipment was staged outside of approved disturbance limits for at least 1-2 days.
Level 1 Incident	MM AQ-1a	8-15-18	Banning Connection	Fugitive dust observed from construction activities.
Level 1 Incident	MM WIL-1b	8-15-18	Banning Connection	Use of unapproved access road.
Level 1 Incident	MM WIL-1b	8-15-18	Banning Connection	Use of unapproved staging area.
Level 1 Incident	Fire Management Plan	9-18-18	Segment 4	Lack of adequate fire abatement equipment
Level 1 Incident	Fire Management Plan	9-18-18	Segment 4	Lack of adequate fire abatement equipment
Level 1 Incident	Fire Management Plan	9-18-18	Segment 4	Lack of adequate fire abatement equipment
Level 1 Incident	Fire Management Plan	9-20-18	Segment 4	Lack of adequate fire abatement equipment
Level 1 Incident	HH-1a	10-17-18	Segment 4	Lack of proper secondary containment for 4 pieces of equipment.
Level 1 Incident	N-1a	10-17-18	Segment 4	Work outside of approved hours
Level 1 Incident	WIL-1b	10-18-18	Grand Terrace MY	Lack of proper covering for pipes between 1.5" to 4"
Level 1 Incident	N-1a	10-18-18	Segment 4	Work outside of approved hours

PROJECT PHOTOGRAPHS

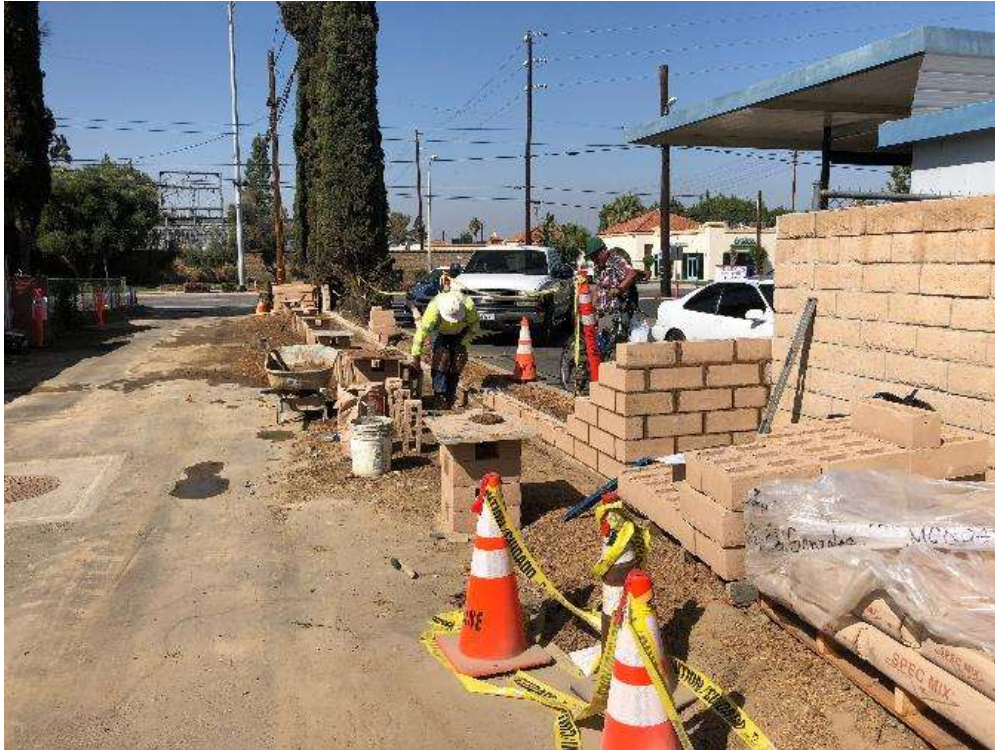


Photo 1 – Replacing a block wall removed during construction along the San Timoteo Relocation (October 9, 2018).



Photo 2 – Erection of LWTSP along Tennessee Relocation (October 9, 2018).



Photo 3 – Conducting road maintenance between Sites 3X50 and 3X62, Segment 3 (October 9, 2018).



Photo 4 – Grading activities occurring at Site 3X57, Segment 3 (October 8, 2018).



Photo 5 – CDC crew performing foundation demolition at Site 4N62, Segment 4 (October 11, 2018).



Photo 6 – Reeler set up for wire pulling activities between Sites 4X55 and 4N64, Segment 4 (October 8, 2018).



Photo 7 – Proper covering of pipes observed at Site 4S60, Segment 4 (October 8, 2018).



Photo 8 – Foundation cages staged outside approved limits near Site 3X20, Segment 3 (October 11, 2018).