



5020 Chesebro Road, Suite 200, Agoura Hills, CA 91301-2285
Tel. 818-597-3407 • Fax 818-597-8001 • www.aspeneg.com

PROJECT MEMORANDUM
SCE WEST OF DEVERS UPGRADE PROJECT

To: John Forsythe, Project Manager, CPUC
From: Vida Strong, Aspen Project Manager
Date: June 13, 2019
Subject: Monitoring Report #67: June 2 to June 8, 2019

Introduction

This report provides a summary of the construction and compliance activities associated with Southern California Edison’s (SCE) West of Devers (WOD) Upgrade Project. SCE self-performed work (NTPs #2 and #3) is essentially complete with the exception of substation equipment upgrades and minor telecom tie-ins. 220 kV work (NTPs #4 and #5) is approximately 28% complete.

CPUC Environmental Monitor (EM): CPUC EM Rosina Goodman was onsite June 3 through 5. CPUC EM Brady Daniels was onsite June 6 and 7.

CPUC Notices to Proceed (NTPs)

Table 1 summarizes the NTPs with construction for the WOD Upgrade Project.

Table 1 - NTPs
(Updated 06/13/19)

NTP #	Date Requested	Date Issued	Phase	Description
NTP #1	04/04/17	06/29/17	Material Yards	Construction or use of 10 Material Yards
NTP #2	05/18/17	06/29/17	Substation Upgrades	Upgrades to 5 existing Substations
NTP #3	06/05/17	08/10/17	Distribution, Subtransmission, and Telecom	Construction of the Distribution, Subtransmission, and Telecommunication portions of the Project
NTP #4	07/13/17	09/05/17	Transmission	Transmission Line Construction on private lands
NTP #5	08/07/17	03/29/18	Construction on BLM lands	Transmission Line construction on BLM lands

Construction & Compliance

A summary of construction and compliance activities is provided below by NTP.

Material Yards (NTP #1)

As defined in NTP #1, Project material yards (MY) include:

- Mountain View #1 MY
- Lugonia MY
- Grand Terrace MY
- Poultry MY

- San Timoteo MY
- Beaumont #1 MY
- Beaumont #2 MY
- Matich MY
- Hathaway #2 MY
- Devers MY

To date, all material yard pre-compliance materials associated with NTP #1 that have been submitted have been approved.

Summary of Construction Activity

1. For the currently approved MYs, all activities are being performed by the contractor operating out of each respective yard. No MY construction activities were conducted during the subject reporting period.
2. The Poultry MY is being utilized by Barnard Construction and Power Grade Incorporated as their primary base of operations and material/equipment storage location. Work associated with the Poultry MY included material/equipment deliveries and general yard maintenance throughout the monitoring period. Helicopter operations out of Poultry MY occurred during the monitoring period.
3. The Matich MY is being utilized by Barnard Construction primarily for tubular steel pole (TSP) storage. Work associated with the Matich MY included material/equipment deliveries throughout the monitoring period.
4. The Mountain View #1 MY is being utilized by Abercrombie Services as their primary base of operations and materials/equipment storage location.
5. The Beaumont #2 MY is being utilized by CJ/Aldridge Drilling as their primary base of operations and material/equipment storage location. Material/equipment deliveries and general yard maintenance occurred at the Beaumont #2 MY throughout the monitoring period.
6. The Grand Terrace MY will be used primarily as a show-up location for project construction crews.
7. The Devers Yard is being utilized by CJ/Aldridge and Power Grade for construction activities on Segment 6. Material/equipment deliveries and general yard maintenance occurred throughout the monitoring period.

Environmental Compliance

1. There were no SCE self-reported or CPUC incidents documented for construction activities associated with NTP #1 throughout the monitoring period.
2. There were no SWPPP maintenance items or corrective actions associated with NTP #1 recorded during the monitoring period. To date, there are no open SWPPP maintenance items or corrective actions associated with NTP #1.
3. There were no reportable (> 1 gallon) or non-reportable (< 1 gallon) spills associated with NTP #1 identified during the monitoring period.
4. No new nests were reported at locations associated with NTP #1 during the monitoring period. As of the end of the monitoring, there are no active nests at locations associated with NTP #1. If required,

management, including the removal of inactive non-special-status bird species' nests, is being implemented per the requirements of the Project Nesting Bird Management Plan (NBMP). No nests were removed during the subject reporting period.

5. No special-status species were observed or identified at locations associated with NTP #1 during the monitoring period.

Substations (NTP #2)

Five substations are identified for improvements in NTP #2. These include:

- Etiwanda Substation
- San Bernardino Substation
- Vista Substation
- El Casco Substation
- Devers Substation

To date, all pre-compliance materials associated with NTP #2 that have been submitted have been approved.

Summary of Construction Activity

1. For the currently approved substation components, all work is being managed by Circle Wood Services with construction support from TTR Substations and SCE crews. Wire stringing connections and wreck-out activities between the project alignment and locations within the substations are being performed by Abercrombie Services.
2. Work activities at the San Bernardino Substation included wreck-out of existing fiber wire and mobilization of equipment.
3. Work activities at the Devers Substation included work inside the MEER building.
4. No construction activities associated with the other substations (El Caso, Vista, and Etiwanda) occurred throughout the monitoring period.

Environmental Compliance

1. There were no SCE self-reported or CPUC incidents documented for construction activities associated with NTP #2 throughout the monitoring period.
2. There were no SWPPP maintenance items or corrective actions associated with NTP #2 recorded during the monitoring period. To date, there are no open SWPPP maintenance items or corrective actions associated with NTP #2.
3. There were no reportable (>1 gallon) or non-reportable (<1 gallon) spills associated with NTP #2 identified during the monitoring period.
4. As of the end of the monitoring period, there were six active nests (common raven, red-tailed hawk, red-shouldered hawk, Cassin's kingbird, and least Bell's vireo) located within work areas associated with NTP #2 and the required buffers have been implemented. If required, management, including the removal of inactive non-special-status bird species' nests, is being implemented per the requirements of the Project NBMP. No nests were removed during the subject reporting period.
5. No new special status species were observed or identified at locations associated with NTP #2 during the monitoring period.

Distribution, Subtransmission, and Telecommunication Work (NTP #3)

NTP #3 included distribution, subtransmission, and telecommunication improvements as presented below. These construction activities have been essentially completed, with minor follow up required in response to Project activities.

Distribution improvements included the following:

- Dental 12-kV Distribution Circuit (Dental Circuit)
- Intern 12-kV Distribution Circuit Underbuild (Intern Circuit)
- Reconductor on Juanita Street (Juanita Reconductor)

Subtransmission improvements included the following:

- Removal of San Bernardino–Redlands-Timoteo and the San Bernardino–Redlands-Tennessee 66-kV Lines (Timoteo-Tennessee Removal)
- Relocation of San Bernardino–Redlands-Timoteo 66-kV Lines (Timoteo Relocation)
- Relocation of San Bernardino–Redlands-Tennessee 66-kV Lines (Tennessee Relocation)

Telecommunication improvements included the following:

- San Bernardino Substation Connection to Redlands Inland Empire District Office (San Bernardino Connection)
- Timoteo-Redlands District Office Fiber Optic Cable Connection (Timoteo-Redlands Connection)
- El Casco Substation Connection to Vista Moreno OPGW (El Casco Connection)
- Maraschino Substation Connection to Devers-Valley OPGW (Maraschino Connection)
- El Casco–Banning Connection to Devers-Vista Skywrap (El Casco–Banning Connection)
- Banning Substation Connection to Devers-Valley OPGW (Banning Connection)

Summary of Construction Activity

1. For the currently approved subtransmission and distribution components, construction activities are being performed by Abercrombie Services and SCE crews. Construction activities included the final tap and splice for the San Bernardino Inland Circuit at Bryn Mawr and along Redlands Boulevard, and the Banning splice for a cell tower outside of Alola Street Substation.
2. Segment 3 resplice on the Vista-Moreno telecom in the San Timoteo Canyon Road parking area.
3. As of the closing of this monitoring period, the construction progress of components associated with NTP #3 is as follows:
 - For distribution components, all 19 12-kV poles have been framed, all 12 12-kV underground vaults have been installed, and 7,430 feet of 12-kV duct bank (conduit) and 10,760 feet of 12-kV conductor wire has been installed.
 - For subtransmission components, 119 of 119 66-kV light-weight TSPs have been erected, 19 of 19 TSPs have been erected, and 25,610 feet of 66-kV wire has been installed. Both the Timoteo and Tennessee circuits have been energized. Wreck-out of the existing subtransmission infrastructure is underway.

Environmental Compliance

1. There were no SCE self-reported or CPUC incidents documented for construction activities associated with NTP #3 throughout the monitoring period.

2. There were no SWPPP maintenance items or corrective actions associated with NTP #3 recorded during the monitoring period. To date, there are no open SWPPP maintenance items or corrective actions associated with NTP #3.
3. There were no reportable (>1 gallon) or non-reportable (<1 gallon) spills associated with NTP #3 identified during the monitoring period.
4. No new nests were reported at locations associated with NTP #3 during the monitoring period. As of the end of the monitoring period, there is one active nest (golden eagle) located within work areas associated with NTP #3 for which the required buffer has been established and no work is planned for the area. If required, management, including the removal of inactive non-special-status bird species' nests is being implemented per the requirements of the Project NBMP. No nests were removed during the subject reporting period.
5. No special-status species were observed or identified at locations associated with NTP #3 during the monitoring period.

Transmission Work (NTP #4)

NTP #4 includes six transmission line segments, identified as Segments 1 through 6, generally moving from west to east.

To date, pre-compliance materials associated with NTP #4, Segments 1 through 6, have been submitted and approved.

Summary of Construction Activity

1. For the currently approved transmission components, Power Grade Incorporated is conducting access road maintenance/stabilization, BMP installation, vegetation removal, and site grading. CJ/Aldridge Drilling is performing foundation work. Abercrombie Services is assembling and erecting new towers, and conducting wire operations with support from Summit Helicopters. Cunningham Davis Corporation is removing existing towers and foundations.
2. Work associated with Segment 1 during the monitoring period included: Tower assembly at Construction Areas 1X03, 1X08, 1X11, 1X12, 1X16, 1X17, 1X19, and 1X25; BMP installation and maintenance at Construction Areas 1X05, 1X10, 1X13, 1X18, 1X19, and 1X20; foundation work at Construction Areas 1X04, 1X10, 1X13 and 1X15; tower wreck-out at Construction Areas 1X15, 1X16, 1X17, 1X19, 1X20, 1X24, 1X25, and 1X26 (see Photo 1); wood pole removal at Construction Areas 1X03 and 1X15; and site decompaction at Construction Areas 1X03thru 1X06, 1X08, 1X10thru 1X13, 1X15, 1X19, and 1X26.
3. Work associated with Segment 2 included: Clearing, grubbing, and soil export at Construction Areas 2X18 and 2X25 (see Photo 2); grading, soil import, and soldier pile wall drilling at Construction Area 2X32 (see Photo 3); foundation work at Construction Area 2X07; guard structure installation at Construction Areas GS-2-E-2N21 and GS-2-2N26-2N29; access road maintenance from Construction Areas 2N01 to 2X32 and adjacent to WA-2-PradoLn-MPR26; and shaker plate installation where the project right-of-way meets Westwood Road, Hilltop Road, and Barton Road.
4. Work associated with Segment 3 included: Tower assembly at Construction Areas 3X24, and 3X43; step bolt installation at Construction Areas 3N03, 3N06, 3N33, 3N55, and 3N59; shoefly installation at Construction Area 3X08; Access road maintenance from Ebenezer Ranch to Construction Area 3X41; clearing, grubbing and Hilfiker wall installation at Construction Area 3X37; soil cement installation at Construction Area 3X33; grading and soil exporting at Construction Area 3X64; weeding and jute netting replacement at soil salvage locations for Construction Areas 3X59thru 3X63; and BMP installation and maintenance at Construction Areas 3X14, 3X16, 3X19, and 3X20.

5. Work activities associated with Segment 4 included: Access road maintenance on the project right-of-way from Palmer Avenue to San Timoteo Canyon Road; and BMP maintenance and hydroseed watering at Construction Areas 4N59, 4N60, 4N61, and 4N63.
6. Work associated with Segment 5 included foundation work at Construction Areas 5X52 and 5X54. There were no work activities associated with Segment 5 on Tribal lands during the reporting period.
7. Work associated with Segment 6 (non-BLM lands) included: Vegetation clearing and grubbing at Construction Areas 6S28 and 6S28A (see Photo 4); grading at Construction Area 6S28; foundation work at Construction Areas 6X09, 6X14, 6S15, 6S15, 6N16, 6N18, 6S18, 6X19, 6N20, 6N21, and 6N22; BMP installation at Construction Areas 6S31, 6S33, 6S34, 6N35, 6S35, 6S36, 6N37, 6S37, 6S38, 6N39, 6S39, 6N40, 6S40, 6X41, 6S41E, 6X42, 6X43, T225, 6X44, 6X45, T223, M7-T3, 6X46, T238, T235, M6-T2, AND T232; and access road maintenance between Construction Areas 6S28 and 6S28A and from White Water Canyon Road to 6S29.
8. Construction updates from SCE will be provided on a bi-weekly basis. The next update will be provided on June 18. As of June 4, construction progress associated with NTP #4 is as follows:
 - 3.5 miles of minor road maintenance were completed in Segments 2 and 6.
 - Grading for foundation installation has been completed at 276 sites.
 - Foundations are completed for 148 of 386 lattice towers and 59 of 83 TSPs.
 - Erection of 77 of 386 lattice towers and 15 of 83 TSPs have been completed.
 - Erection of 51 temporary shoofly locations has been completed.
 - Stringing of approximately 3.7 of 8.0 circuit miles of shoofly conductor, 23.55 of 184.0 circuit miles of mainline conductor, and 11.42 of 99.0 circuit miles of OPGW fiber has been completed.
 - Demolition of 77 of 602 existing structures and 74 of 415 existing foundations has been completed.
 - Wire wreck-out has been completed along 14.57 circuit miles.
9. The first required outages (Project Move 1 and Project Move 2) were completed in 2018. Project Move 3 in Segment 3 was completed May 10, 2019. Move 4 in Segment 1 started May 13, 2019.

Environmental Compliance

1. On June 4, the CPUC EM observed track-out from Construction Area 1X18 starting to build-up on the sidewalk exit to Redlands Boulevard (see Photo 5). The CPUC EM notified the SCE Environmental Compliance Lead of the issue. The track-out on the sidewalk was swept prior to the end of the day and the CPUC EM was notified after it was completed. The SCE Environmental Compliance Lead stated the issue would be addressed with the crew for continued maintenance of the right-of-way exits.
2. There were four SCE self-reported observations during the monitoring period on Segments 1 and 2 for cultural and paleontological resources. Resources discovered on Segment 1 temporarily halted work while the discovery was evaluated. The resources were collected and will be reburied upon completion of work in the area. The resources on Segment 2 temporarily halted work while collection of fossils occurred so that the fossils could be further evaluated.
3. On June 4, at approximately 10:25am, while positioned on the tower, a crew was removing structure M0-T3 at Construction Area 1X26 when the crane had an apparent mechanical malfunction which resulted in the crane boom lowering (out of operator control). The malfunction occurred when the upper section of the tower came free and swung out of plumb of the crane causing the upper section of the structure and the boom to make contact with the lower section of the structure. The operator brought the section to the ground when control of the crane was regained. No injuries or property

damage occurred as a result of the incident. A stand down was performed the following day to discuss the event.

4. On May 22, SCE received a Cease and Desist Letter from the Morongo Reservation to stop construction activities on tribal land. Construction crews removed all equipment from tribal lands and construction activities are on hold for Tribal lands on Segment 5 until further notice.
5. There were five SWPPP maintenance items or corrective actions associated with NTP #4 recorded during the monitoring period on Segments 1 and 3. All maintenance and corrective actions were completed by the next day they were reported. To date, there are no open SWPPP maintenance items or corrective actions associated with NTP #4.
6. One small spill (<1 gallon) was identified in Segment 6 during the monitoring period. The contaminated soil was collected and disposed of in accordance with the approved methods. No other spills (reportable >1 gallon or non-reportable <1 gallon) associated with NTP #4 were identified during the monitoring period.
7. Meetings to review helicopter flight tracks with SCE are occurring every two weeks. Flight tracks are reviewed to monitor compliance with local jurisdiction construction work hours and sensitive receptor avoidance, including residences, schools, and nesting bird avoidance areas. Tracks were reviewed on May 30. Only one flight occurred during the last two weeks. The flight was on May 20. No nest buffer incursions or early/late start times were noted. The next flight track review will take place on June 13.
10. As of the end of the monitoring period, there are 93 active nests at locations associated with NTP #4 during the monitoring period. Nests include: Anna's hummingbird, black-chinned hummingbird, burrowing owl, bushtit, cactus wren, hooded oriole, Nuttall's woodpecker, acorn woodpecker, northern mockingbird, California thrasher, common raven, least Bell's vireo, black-tailed gnatcatcher, ash-throated flycatcher, western kingbird, mourning dove, lesser goldfinch, American goldfinch, black phoebe, American robin, Lawrence's goldfinch, phainopepla, barn owl, spotted towhee, greater roadrunner, Brewer's blackbird, Bewick's wren, and red-tailed hawk. Buffers have been established per the Project NBMP. If required, management, including the removal of inactive non-special-status bird species' nests is being implemented per the requirements of the Project NBMP. No nests were removed during the subject reporting period.
8. There were seven special-status species observed or identified at locations associated with NTP #4 during the monitoring period. These included a least Bell's vireo, prairie falcon, burrowing owl, loggerhead shrike, white-tailed kite, Southern California rufous-crowned sparrow, and orange-throated whiptail.
9. SCE provided documentation of FAA filings for the Project on September 17 and September 26; FAA concurrence will be required prior to tower installation where applicable. Additional information was provided February 11, 2019. FAA recommended marker balls have been installed on the shoofly spans near El Casco Substation.

Transmission Work BLM Lands (NTP #5)

NTP #5 includes the portion of one transmission line segment, identified as Segment 6, which traverses properties managed by the Bureau of Land Management (BLM). NTP #5 was approved by BLM on March 29, 2018. The preconstruction compliance package for BLM lands was deemed acceptable by BLM on February 5, 2019.

Summary of Construction Activity

1. For the currently approved transmission components, Power Grade Incorporated is conducting access road maintenance/stabilization, BMP installation, vegetation removal, and site grading. CJ/Aldridge

Drilling is performing foundation work. Abercrombie Services is assembling and erecting new towers, and conducting wire operations with support from Summit Helicopters. Cunningham Davis Corporation is removing existing towers and foundations.

2. Work associated with Segment 6 (BLM lands) during the monitoring period included: Vegetation removal at Construction Area 6S29; foundation work at Construction Area 6N21; and BMP installation at Construction Areas 6S30-A, 6S31A, and 6S32.

Environmental Compliance

See NTP #4 discussion above for environmental compliance activities.

Temporary Extra Workspaces (TEWS) and Minor Project Refinements (MPRs)

MPR #28 was approved during the subject monitoring period. Table 2 summarizes the TEWS and MPRs for the WOD Upgrade Project to date.

Table 2 - TEWS & MPRs
(Updated 06/13/19)

TEWS / MPR	Date Requested	Date Issued	Phase	Description
Temporary Extra Workspaces (TEWS)				
TEWS #1	10-12-17	10-19-17	Maraschino Connection	Access to Beaumont Cherry Valley District water hydrant meter located near the intersection of Highland Springs Avenue and Crooked Creek, Beaumont.
TEWS #2	11-13-17	11-21-17	El Casco– Banning Connection	Water source on Oak Valley Boulevard.
TEWS #3	12-15-17	12-15-17	Banning Connection	Access to existing poles off of Lincoln Street.
TEWS #4	12-18-17	12-18-17	Banning Connection	Access to existing poles off of Wesley Street.
TEWS #5	12-20-17	12-21-17	Banning Connection	Access to existing poles at intersection of Wesley Street and Old Idyllwild Road
TEWS #6	6-13-18	6-13-18	Timoteo Relocation	Extra workspace to facilitate erection of TSP #4696058 at intersection of Redlands Boulevard and Bryn Mawr Street
TEWS #7	7-27-18	7-30-18	Timoteo Relocation	Extra workspace to facilitate wire pulling activities along Research Drive and Almond Avenue
TEWS #8	8-27-18	8-28-18	Dental/Intern Circuits	DENIED AND RESCINDED – Extra workspace to facilitate construction along Mission Road
TEWS #9	10-18-18	10-19-18	Timoteo Relocation	Extra workspace for walking path at Bryn Mawr and I-10
TEWS #10	11-05-18	11-05-18	Timoteo Relocation	Extra workspace along Barton and Mountain View Roads for cutover operations.

TEWS / MPR	Date Requested	Date Issued	Phase	Description
TEWS #11	01-30-19	01-31-19	Timoteo Relocation	Extra workspace to facilitate the removal of fiber optic cable from overhead poles north along Mountain View Avenue and east along Redlands Boulevard.
TEWS #12	02-06-19	02-07-19	Timoteo Relocation	Extra workspace along Mountain View Avenue for subtransmission pole removal.
TEWS #13	02-26-19	02-26-19	Segment 3	Temporary access road detour for vehicle and equipment travel to/from San Timoteo Canyon Road and Tower Site 3X41.
TEWS #14	05-13-19	05-14-19	Banning Connection	Extra workspace along the east side of south Alola Street, City of Banning.
TEWS #15	05-16-19	05-17-19	Segment 1	HLZ and temporary staging area for construction vehicles, materials, and equipment.
Minor Project Refinements (MPRs)				
MPR #1	11-17-17	11-22-17	Maraschino Connection	Revisions to the amount of new underground telecom construction.
MPR #2	12-13-17	12-15-17	Maraschino Connection	Addition of two vault work areas on Highland Springs Road.
MPR #3	12-21-17	12-28-17	El Casco–Banning Connection	Adjustments to alignment along Oak Valley Parkway
MPR #4	12-27-17	1-3-18	Maraschino/El Casco–Banning Connections	Continued use of two fire hydrants previously approved as TEWS #1 and TEWS #2
MPR #5	1-16-18	1-22-18	Banning Connection	Continued use of access routes described in TEWS #3, 4, and 5 and temporary access paths through private property along Coyote Trail
MPR #6	2-8-18	2-12-18	Project-wide	Use of 10 water sources to support construction activities
MPR #7	2-23-18	2-28-18	Poultry MY	Temporary water and electrical supply to yard
MPR #8	2-27-18	3-2-18	El Casco Connection/Segment 1	New telecom splice location and single new steel pole installation
MPR #9	3-26-18	3-27-18	El Casco Connection	Telecom work areas along El Casco Substation access road
MPR #10	4-6-18	4-9-18	Mountain View #1 MY/All subtrans	Additional work spaces at Mountain View #1 MY entry and at subtransmission improvements work areas
MPR #11	5-4-18	5-8-18	Tennessee Relocation	Relocation of 5 subtransmission structures from the east side to the west side of Nevada Street

TEWS / MPR	Date Requested	Date Issued	Phase	Description
MPR #12	5-14-18	5-16-18	Timoteo Relocation	Additional work space for TSP erection at Bryn Mawr Avenue and Interstate 10.
MPR #13	5-23-18	5-25-18	Project-wide	Addition of encased fire hose to O'Grady Court water source and use of 17 water sources to support construction activities
MPR #14	5-24-18	5-31-18	Timoteo/ Tennessee Relocations	Location shift of 3 TSPs and 1 vault location
MPR #15	5-31-18	6-4-18	Poultry MY	Paving of access road and trailer complex area
MPR #16	6-11-18	6-13-18	Banning Connection	Shift of horizontal directional drilling (HDD) alignment through Smith Creek and addition of walking paths along Coyote Trail
MPR #17	6-20-18	6-22-18	Dental Circuit/ Tennessee Relocation	Additional work space along Mission Road, Lugonia Avenue, and Nevada Street
MPR #18	8-3-18	8-7-18	Timoteo Relocation/ Beaumont #2 MY	Expansion of vault installation work area off Mountain View Avenue and new water source near Beaumont #2 MY
MPR #19	8-13-18	8-20-18	Segment 4	Additional work space requests at Sites 4N58, 4N59, and 4N64
MPR #20	8-21-18	8-27-18	Banning Connection	Use of unpaved access road west of Smith Creek
MPR #21	10-4-18	10-10-18	Project-wide/ Segments 3&4	Use of 6 water sources, installation of water tank, use of access road, and expansion of WSS
MPR #22	11-19-18	11-20-18	Subtrans and Telecom	Pole replacement, switch replacement, and shift in underground telecom route.
MPR #23	12-11-18	12-21-18	Transmission	Site 3N32 and Move 3 work areas.
MPR #24	01-15-19	01-28-19	Transmission	Additional Wire Stringing Site in Segment 1.
MPR #25	03-11-19	03-14-19	Transmission	Additional work area west of Supersite 3X55, Segment 3.
MPR #26	04-02-19	04-04-19	Transmission	Use of Prado Lane access road (Segment 2) and two existing hydrants (Segment 6).
MPR #27	04-30-19	05-01-19	Transmission	Use of two existing hydrants (Segment 1), water tank (Segment 2), and helicopter work area (Segment 3).
MPR #28	05-31-19	06-06-19	Transmission	Extra work space areas, including helicopter landing zones and access roads, on Segments 1, 2, and 6.

CPUC Compliance Incidents, Project Memoranda (PMs) and Non-Compliance Reports (NCRs)

Table 3 summarizes the CPUC Incidents, PMs, and NCRs issued to date.

Table 3
CPUC Incidents, Project Memoranda, and Non-Compliance Reports
 (Updated 06/13/19)

Incident/PM/NCR	Regulatory Requirement	Date Issued	Phase	Description
Level 1 Incident	Traffic Control Plan	01-30-18	Banning Connection	Traffic control was set up in such a way that diverted flow into active work area and deviated from approved Traffic Control Plan.
Level 1 Incident	MM WIL-1b	04-19-18	Timoteo/Tennessee Relocation	A portable water tank was observed uncovered for four consecutive days.
Level 1 Incident	MM VEG-1a	5-24-18	El Casco Substation	Equipment was staged outside of approved disturbance limits for at least 1-2 days.
Level 1 Incident	MM AQ-1a	8-15-18	Banning Connection	Fugitive dust observed from construction activities.
Level 1 Incident	MM WIL-1b	8-15-18	Banning Connection	Use of unapproved access road.
Level 1 Incident	MM WIL-1b	8-15-18	Banning Connection	Use of unapproved staging area.
Level 1 Incident	Fire Management Plan	9-18-18	Segment 4	Lack of adequate fire abatement equipment at 3 locations.
Level 1 Incident	Fire Management Plan	9-20-18	Segment 4	Lack of adequate fire abatement equipment
Level 1 Incident	HH-1a	10-17-18	Segment 4	Lack of proper secondary containment for 4 pieces of equipment.
Level 1 Incident	N-1a	10-17-18	Segment 4	Work outside of approved hours
Level 1 Incident	WIL-1b	10-18-18	Grand Terrace MY	Lack of proper covering for pipes between 1.5" to 4"
Level 1 Incident	N-1a	10-18-18	Segment 4	Work outside of approved hours
Level 1 Incident	AQ-1a	10-30-18	Grand Terrace MY	Fugitive Dust Emissions Outside of Property Boundaries at the Grand Terrace Yard.
Level 1 Incident	WIL-1b	01-24-19	Segment 3	Pipes/tubing left open at Sites 3X08 and 3X10.
Level 1 Incident	AQ-1a	02-13-19	Segment 3	Fugitive dust along Segment 3 access road to 3X06.
Level 2 Incident	VEG-3a	02-13-19	Segment 3	Offsite sediment discharge from access road into JD ID 3054.

PROJECT PHOTOGRAPHS



Photo 1 – Tower wreck-out activities on Segment 1 (June 3, 2019).

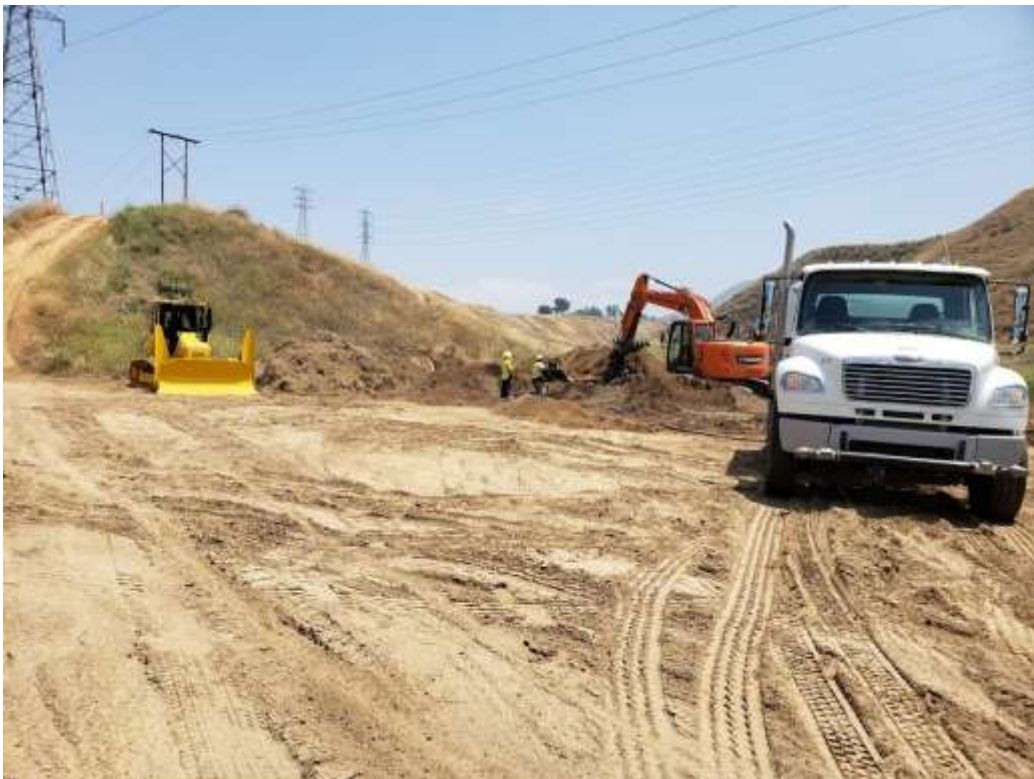


Photo 2 – Grading activities on Segment 2 (June 3, 2019).



Photo 3 – Soldier pile wall drilling on Segment 2 (June 5, 2019).



Photo 4 – Clearing, grubbing, and soil grading activities on Segment 6 (June 3, 2019)

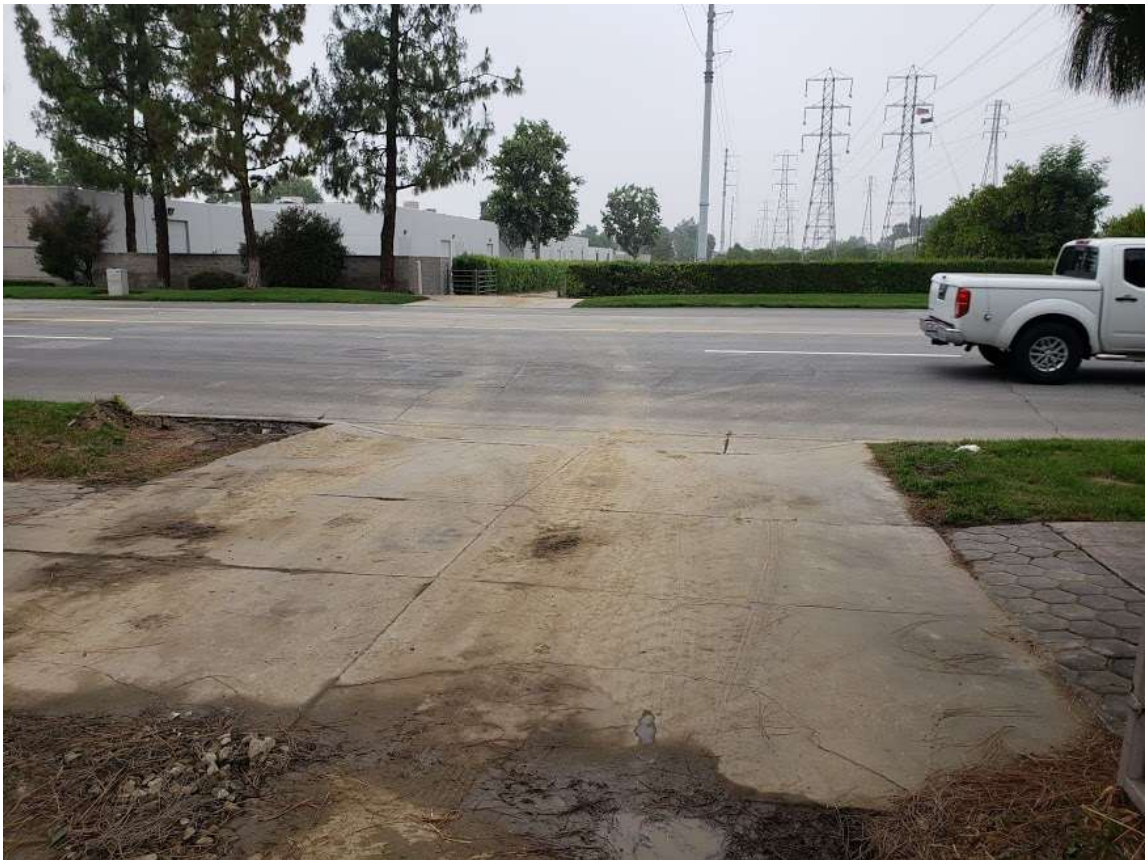


Photo 5 – Track-out issues near Construction Area 1X18 and Redlands Boulevard (June 4, 2019)