



5020 Chesebro Road, Suite 200, Agoura Hills, CA 91301-2285
Tel. 818-597-3407 • Fax 818-597-8001 • www.aspeneg.com

PROJECT MEMORANDUM
SCE WEST OF DEVERS UPGRADE PROJECT

To: John Forsythe, Project Manager, CPUC
From: Vida Strong, Aspen Project Manager
Date: June 24, 2021
Subject: Monitoring Report #166: June 14 to 20, 2021

Introduction

This report provides a summary of the construction and compliance activities associated with Southern California Edison’s (SCE) West of Devers (WOD) Upgrade Project. SCE self-performed work (NTPs #2 and #3) is essentially complete with the exception of substation equipment upgrades and minor tie-ins. 220 kV work (NTPs #4 and #5) is approximately 92% complete with final circuit energization on May 14, 2021. Remaining construction activities include existing structure/wire wreck-out, cathodic protection installation, and restoration.

CPUC Environmental Monitor (EM): CPUC EM, Rosina Goodman, was onsite June 15 and 16, 2021.

CPUC Notices to Proceed (NTPs)

Table 1 summarizes the NTPs with construction for the WOD Upgrade Project. No additional NTPs are required.

Table 1 – NTPs

NTP #	Date Requested	Date Issued	Phase	Description
NTP #1	04/04/17	06/29/17	Material Yards	Construction or use of 10 Material Yards
NTP #2	05/18/17	06/29/17	Substation Upgrades	Upgrades to 5 existing Substations
NTP #3	06/05/17	08/10/17	Distribution, Subtransmission, and Telecom	Construction of the Distribution, Subtransmission, and Telecommunication portions of the Project
NTP #4	07/13/17	09/05/17	Transmission	Transmission Line Construction on private lands
NTP #5	08/07/17	03/29/18	Construction on BLM lands	Transmission Line construction on BLM lands

Construction & Compliance

A summary of construction and compliance activities is provided below by NTP.

Material Yards (NTP #1)

As defined in NTP #1, Project material yards (MY) include:

- Mountain View #1 MY
- Lugonia MY (not used to date)
- Grand Terrace MY (as of May 2020, no longer being used)

- Poultry MY
- San Timoteo MY (not used to date)
- Beaumont #1 MY (not used to date)
- Beaumont #2 MY (as of July 2020, no longer being used)
- Matich MY
- Hathaway #2 MY (not used to date)
- Devers MY

Summary of Construction Activity

1. For the currently approved MYs, all activities are being performed by the contractor operating out of each respective yard.
2. The Poultry MY is being utilized by Barnard Construction and Power Grade Incorporated as their primary base of operations and material/equipment storage location. Work associated with the Poultry MY included general yard maintenance and preparation for demobilization throughout the monitoring period. Helicopter operations occurred out of the Poultry MY during the subject reporting period.
3. The Matich MY is being utilized by Barnard Construction primarily for tubular steel pole (TSP) storage. Wilson and CJ/Aldridge have demobilized from the project and removed their equipment from the MY. Work associated with the Matich MY included general yard maintenance and preparation for demobilization. Helicopter operations occurred out of the Matich MY during the subject reporting period.
4. The Mountain View #1 MY is being utilized by Abercrombie Services for materials/equipment storage, mobilization, and maintenance. Abercrombie has removed approximately 90% of materials and equipment stored at the yard.
5. CJ/Aldridge Drilling demobilization from the Beaumont #2 MY is complete.
6. The Devers MY is being utilized by CJ/Aldridge, Abercrombie Services, and Power Grade for construction activities on Segment 6 and for material/equipment deliveries.
7. Restoration and hydroseeding at the Grand Terrace MY have been completed. Watering of hydroseed areas occurred during the monitoring period.

Environmental Compliance

1. There were no SCE self-reported or CPUC-issued incidents and one observation during the monitoring period. During a biological sweep of the Mountain View MY, the monitor observed evidence of non-project related grading, asphalt dumping, and paving within Construction Area CMYWA-1-MountainViewYard-MPR10, the area located east of the MY's perimeter fence.
2. There were no SWPPP maintenance items or corrective actions associated with NTP #1 were recorded during the monitoring period. To date, there are no open SWPPP maintenance or corrective actions associated with NTP #1.
3. There were no reportable (> 1 gallon) or non-reportable (< 1 gallon) spills associated with NTP #1 identified during the monitoring period.
4. As of the end of the monitoring period, there are no active nests at locations associated with NTP #1 during the monitoring period. If required, nest management, including establishment of buffers and the removal of inactive non-special-status bird species' nests (non-nesting season only), is being implemented per the requirements of the Project Nesting Bird Management Plan (NBMP). There were no nest buffer reduction submissions associated with NTP #1 during the subject reporting period.

5. No special-status species were observed at locations associated with NTP #1 during the monitoring period.

Substations (NTP #2)

Five substations are identified for improvements in NTP #2. These include:

- Etiwanda Substation
- San Bernardino Substation
- Vista Substation
- El Casco Substation
- Devers Substation

Summary of Construction Activity

1. For the currently approved substation components, all work is being managed by Circle Wood Services with construction support from TTR Substations, Roberson Waite, Cunningham-Davis, and SCE crews. Wire stringing connections and wreck-out activities between the project alignment and locations within the substations are being performed by Abercrombie Services.
2. There were no construction activities at the El Casco, San Bernardino, and Devers substations. Construction activities at the Etiwanda and Vista substations are complete.

Environmental Compliance

1. There were no SCE self-reported and no CPUC incidents documented for construction activities associated with NTP #2 throughout the monitoring period.
2. There were no SWPPP maintenance items or corrective actions associated with NTP #2 recorded during the monitoring period. To date, there are no open SWPPP maintenance or corrective actions associated with NTP #2.
3. There were no reportable (>1 gallon) or non-reportable (<1 gallon) spills associated with NTP #2 identified during the monitoring period.
4. As of the end of the monitoring period, there are no active nests located within work areas associated with NTP #2. If required, nest management, including establishment of buffers and the removal of inactive non-special-status bird species' nests (non-nesting season only), is being implemented per the requirements of the Project NBMP. There were no nest buffer reduction submissions associated with NTP #2 for the subject reporting period.
5. No new special status species were observed at locations associated with NTP #2 during the monitoring period.

Distribution, Subtransmission, and Telecommunication Work (NTP #3)

NTP #3 included distribution, subtransmission, and telecommunication improvements as presented below. These construction activities have been essentially completed, with minor follow up required in response to Project activities.

Distribution improvements included the following:

- Dental 12-kV Distribution Circuit (Dental Circuit)
- Intern 12-kV Distribution Circuit Underbuild (Intern Circuit)
- Reconductor on Juanita Street (Juanita Reconductor)

Subtransmission improvements included the following:

- Removal of San Bernardino–Redlands-Timoteo and the San Bernardino–Redlands-Tennessee 66-kV Lines (Timoteo-Tennessee Removal)
- Relocation of San Bernardino–Redlands-Timoteo 66-kV Lines (Timoteo Relocation)
- Relocation of San Bernardino–Redlands-Tennessee 66-kV Lines (Tennessee Relocation)

Telecommunication improvements included the following:

- San Bernardino Substation Connection to Redlands Inland Empire District Office (San Bernardino Connection)
- Timoteo-Redlands District Office Fiber Optic Cable Connection (Timoteo-Redlands Connection)
- El Casco Substation Connection to Vista Moreno OPGW (El Casco Connection), Segment 3
- Maraschino Substation Connection to Devers-Valley OPGW (Maraschino Connection)
- El Casco–Banning Connection to Devers-Vista Skywrap (El Casco–Banning Connection), Segment 4
- Banning Substation Connection to Devers-Valley OPGW (Banning Connection), Segment 6

Summary of Construction Activity

1. For the currently approved subtransmission and distribution components, construction activities are being performed by Abercrombie Services and SCE crews. No construction activities associated with NTP #3 occurred during the monitoring period.
2. As summarized below, construction of the NTP #3 primary components is essentially complete with the exception of minor tie-ins.
 - For distribution components, all 19 12-kV poles have been framed, all 12 12-kV underground vaults have been installed, and 7,430 feet of 12-kV duct bank (conduit) and 10,760 feet of 12-kV conductor wire has been installed.
 - For subtransmission components, 119 of 119 66-kV light weight TSPs have been erected, 19 of 19 TSPs have been erected, and 25,610 feet of 66-kV wire has been installed. Both the Timoteo and Tennessee circuits have been energized. Wreck-out of the existing subtransmission infrastructure has been completed.

Environmental Compliance

1. There were no SCE self-reported or CPUC incidents documented for construction activities associated with NTP #3 throughout the monitoring period.
2. There were no SWPPP maintenance items or corrective actions associated with NTP #3 recorded during the monitoring period. To date, there are no open SWPPP maintenance items or corrective actions associated with NTP #3.
3. There were no reportable (>1 gallon) or non-reportable (<1 gallon) spills associated with NTP #3 identified during the monitoring period.
4. As of the end of the monitoring period, there are no nests located within work areas associated with NTP #3. If required, nest management, including establishment of buffers and the removal of inactive non-special-status bird species' nests (non-nesting season only) is being implemented per the requirements of the Project NBMP. There were no nest buffer reduction submissions associated with NTP #3 during the subject reporting period.
5. No special-status species were observed at locations associated with NTP #3 during the monitoring period.

Transmission Work (NTP #4)

NTP #4 includes six transmission line segments, identified as Segments 1 through 6, generally moving from west to east.

Summary of Construction Activity

1. For the currently approved transmission components, Power Grade Incorporated is conducting access road maintenance/stabilization, BMP installation, vegetation removal, and site grading. CJ/Aldridge Drilling and Wilson Construction have demobilized from the Project. Abercrombie Services is assembling and erecting new towers and conducting wire operations with support from Wilson Helicopters. Fiber Network Solutions is performing telecom splicing. Cunningham Davis Corporation and Cold Smoke are removing existing towers and foundations. Hot Line Construction is installing conduit. Ancillary telecommunication work approved in NTP #4 is being performed by SCE crews.
2. No work activities associated with Segment 1 occurred during the subject monitoring period.
3. Work activities associated with Segment 2 included: Hilfiker wall excavation activities at Construction Areas 2N12 and SWA-2-2N12-2-MPR-43 (see Photo 1); hand weeding at Construction Areas 2N25 and 2N29; hydroseed watering at Construction Areas 2N14 through 2N18, 2N22 through 2N32, and 2N35; site restoration grading at Construction Area 2N18; nest deterrent removal at Construction Areas 2N01 and 2N01-WSS; punch-list items at Construction Area 2N26; and fiber testing and splicing at Construction Area 2N01.
4. Work activities associated with Segment 3 included: Site restoration and foundation compaction at Construction Areas 3X39, 3X41, 3X44 (see Photo 2), 3X46, and 3X62; foundation removal at Construction Areas 3X53 and M37-T3; gabion basket installation at Construction Area 3X65; hand weeding at Construction Areas 3X48, 3X50, and 3X51; hydroseed watering at Construction Areas 3N03, 3N04, 3X10, 3X12, 3X14, 3X17, 3X20 through 3X27, 3X33, 3X37, 3X40 through 3X43, 3X48, 3X50, 3X60, WA-3-3N64-MPR-38, and 3X64; nest deterrent removal at Construction Areas 3X07, 3X08, 3X10, 3X12, 3X13, and 3X19; and v-ditch excavation and installation at Construction Area 3X46.
5. Work associated with Segment 4 (including Construction Areas 4X12 and 4X13 within Morongo Lands as reported by SCE) included: Wire wreck-out activities (ground and helicopter) and snub pole installation at Construction Areas SWA-4-PP123353-4-MPR-46, SWA-4-PP123353-2-MPR-43, PP123353, SWA-4-PP123353-3-MPR-43, SWA-4-PP123353-5-MPR-46, PP123354, PP123355, PP123356, and 4X55 through 4N58 (see Photo 3); right-of-way clean-up at Construction Areas M20-T3, 4X05 through 4X20, PP123342, PP123343, PP123352, and PP123353; H-frame hardware wreck-out at Construction Areas SWA-4-PP123353-4-MPR-46, SWA-4-PP123353-2-MPR-43, PP123353, SWA-4-PP123353-3-MPR-43, SWA-4-PP123353-5-MPR-46, PP123354, PP123355, and PP123356; and restoration watering and maintenance at Construction Areas 4N59 through 4N63 (see Photo 4).
6. Work associated with Segment 5 (including sites within Morongo lands as reported by SCE) included: Wire wreck-out activities (ground and helicopter) at Construction Areas 5X29, WSS-5X31-5X32, 5X46 through 5X49, GS-5-5X48-TEWS-36, M14-T1 through M16-T3, SR-M75T4-M75T5, WSS-M74-T4, M75-T1 through M76-T4, and PP123357 through PP123359; foundation wreck-out and tower shearing at Construction Areas 5X06, 5X08, 5X10, 5X11, 5X14, WSS-5X15-5X16 (M11-T1), 5X19, 5X27, 5X29, M10-T2, M13-T2, M12T2-M72T2, and 4175193E through 4175196E (see Photo 5); v-ditch installation at Construction Area 5X54; and hydroseed watering at Construction Areas 5X09 through 5X14 and 5X37 through 5X47.
7. Work associated with Segment 6 (non-BLM lands) included: Wire wreck-out activities (ground and helicopter) at Construction Areas 6N26 through 6X43 (see Photo 6), M6-T2, and M65-T2; guard structure removal at Construction Areas GS-6N27-6N28-3 and GS-6N27-6N28-2; tower wreck-out activities

at Construction Areas 6X43, 6X44, 6X47, M7-T3, and M65-T2; punch-list items at Construction Area 6N34; and nest deterrent removal at Construction Area 6X09-6X10.

8. 220 kV construction updates from SCE are generally being provided on a bi-weekly basis. The next update will be provided on July 6, 2021. As of June 7, construction progress associated with NTP #4 is as follows:
 - Grading for foundation installation has been completed at 479 of 483 sites.
 - Foundations are completed for 386 of 386 lattice towers and 82 of 82 TSPs.
 - Erection of 386 of 386 lattice towers and 82 of 82 TSPs have been completed.
 - Erection of 76 of 76 temporary shoofly locations has been completed.
 - Stringing of approximately 6.3 of 6.3 circuit miles of shoofly conductor, 184.0 of 184.0 circuit miles of mainline conductor, and 91.0 of 91.0 circuit miles of OPGW fiber has been completed.
 - Demolition of 461 of 602 existing structures and 321 of 415 existing foundations has been completed.
 - Wire wreck-out has been completed along 165.79 circuit miles of 184.0.
 - 184 of 483 sites have been restored and hydroseeded.
 - 151 of 161 MAC Drain installations have been completed.
 - 35 of 35 scour countermeasures have been completed.
 - 9 of 9 soldier pile retaining walls have been completed.
 - 172 of 295 site have been signed off by SCE (final civil engineering).
9. The first required outages (Project Move 1 and Project Move 2) were completed in 2018. Project Moves 3 and 4 were completed in 2019. Move 5 in Segments 1, 2, 5, and 6 began on August 5, 2019, and was completed January 15, 2020. Move 6 in Segment 2 began on October 14, 2019 and was completed on February 14, 2020. Move 7 in Segment 1 began on February 24, 2020 and was completed on March 18, 2020. Move 8, in all segments except Segment 2, began on March 9, 2020, and was completed on August 4, 2020. Move 9 in Segments 3 and 6 began on August 8, 2020 and was completed on August 17, 2020. Move 10 in Segments 3, 4, and 5 began on August 24, 2020, and was completed on December 22, 2020. Move 11 in Segment 1 began on January 4, 2021 and was completed on January 20, 2021. Move 12 in Segment 1 began on January 21, 2021 and completed on February 12, 2021. Move 13 in Segments 2 through 4 began on February 13, 2021 and was completed on March 6, 2021. Move 14 in Segments 3, 4, and 6 began on March 8, 2021, and was completed on March 22, 2021. Move 15 began on March 15, 2021, in Segments 4 and 6 and was completed on April 11, 2021. All project moves are complete.

Environmental Compliance

1. There were no SCE self-reported, CPUC issued incidents, or observations during the monitoring period.
2. There were no reportable (>1 gallon) and one non-reportable (<1 gallon) spill associated with NTP #4 identified during the monitoring period on Segment 5. On June 15, the equipment operator noticed a drop in hydraulic pressure on the excavator used for tower shearing at Construction Area M10-T2 and immediately shut down the equipment. The hydraulic hose was accidentally severed by tower steel during shearing activities. Approximately one quart of hydraulic oil was spilled with approximately 16-ounces impacting the soil and the rest on tower steel and equipment. The equipment and tower steel were wiped down, and impacted soil was placed in a spill kit bucket for transport to the Poultry Yard for offsite disposal at an SCE approved waste facility.
3. There were no SWPPP maintenance items or corrective actions associated with NTP #4 recorded during the monitoring period. To date, there are no open SWPPP maintenance items or corrective actions associated with NTP #4.

4. Meetings to review helicopter flight tracks with SCE generally occur every two weeks. Flight tracks are reviewed to monitor compliance with local jurisdiction construction work hours and sensitive receptor avoidance, including residences, schools, and nesting bird avoidance areas. On June 24, flight track information was provided, documenting that there were six flights during the period of June 7 through 18, 2021 and no incursions were noted. The next flight track review will take place on July 8, 2021.
5. As of the end of the monitoring period, there are 88 active nests associated with NTP #4 during the monitoring period. These include common raven, black-chinned hummingbird, blue-gray gnatcatcher, least Bell's vireo, phainopepla, yellow warbler, lesser goldfinch, cactus wren, northern mockingbird, Cassin's kingbird, western kingbird, hooded oriole, Bullock's oriole, black-headed grosbeak, house finch, mourning dove, red-tailed hawk, barn owl, and burrowing owl. Buffers have been established per the Project NBMP. If required, nest management, including establishment of buffers and the removal of inactive non-special-status bird species' nests (non-nesting season only) is being implemented per the requirements of the Project NBMP. There were nine nest buffer reduction submissions associated with NTP #4 during the subject reporting period. These included cactus wren, common raven, western kingbird, northern mockingbird, house finch, and barn owl.
6. There were four special-status species observed at locations associated with NTP #4 during the monitoring period. These included Cooper's hawk, orange-throated whiptail, desert tortoise, and red diamondback rattlesnake.
7. There was one new woodrat midden associated with NTP #4 documented during the monitoring period on Segment 5. A 10-foot Environmentally Sensitive Area (ESA) avoidance buffer was staked per the Special-status Small Mammals Avoidance and Minimization Plan. There were no midden relocations documented during the monitoring period.
8. SCE provided documentation of FAA filings for the Project on September 17 and September 26, 2018; FAA concurrence will be required prior to tower installation where applicable. Additional information was provided February 11, 2019. FAA recommended marker balls have been installed on the shoofly spans near El Casco Substation; from Construction Area 1W02 to 1W03 on Segment 1; from Construction Area 2N01 to 2N04, and 2N12 to 2N14 on Segment 2; from 2N01 to 3X65 between Segments 2 and 3; from 3X35 to 3X43 on Segment 3; from Construction Area 4X04 to 4X05 and 4X10 to 4X12 on Segment 4; 5X43, from 5N49 to 5N52 and 5N54 to 4N01 on Segments 4 and 5; and from Construction Area 6S27 to 6S28 and 6N27 through 6N31 on Segment 6. FAA lighting was installed at Construction Areas 2N02, 4X10, and 5X43.

Transmission Work BLM Lands (NTP #5)

NTP #5 includes the portion of one transmission line segment, identified as Segment 6, which traverses properties managed by the Bureau of Land Management (BLM). NTP #5 was approved by BLM on March 29, 2018. The preconstruction compliance package for BLM lands was deemed acceptable by BLM on February 5, 2019.

Summary of Construction Activity

1. For the currently approved transmission components, Power Grade Incorporated is conducting access road maintenance/stabilization, BMP installation, vegetation removal, and site grading. CJ/Aldridge Drilling and Wilson Construction have demobilized from the Project. Abercrombie Services is assembling and erecting new towers and conducting wire operations with support from Wilson Helicopters. Fiber Network Solutions is performing telecom splicing. Cunningham Davis Corporation and Cold Smoke are removing existing towers and foundations.
2. Work activities associated with Segment 6 (BLM lands) during the subject reporting period included wire wreck-out activities (ground and helicopter) at Construction Areas 6S29, 6N29 through 6N31, and M65-T2.

Environmental Compliance

See NTP #4 discussion above for environmental compliance activities.

Temporary Extra Workspaces (TEWS) and Minor Project Refinements (MPRs)

One TEWS and no MPRs were approved during the subject monitoring period. Table 2 summarizes the TEWS and MPRs for the WOD Upgrade Project to date.

Table 2 – TEWS & MPRs
(Updated 06/24/21)

TEWS / MPR	Date Requested	Date Issued	Phase	Description
Temporary Extra Workspaces (TEWS)				
TEWS #1	10-12-17	10-19-17	Maraschino Connection	Access to Beaumont Cherry Valley District water hydrant meter located near the intersection of Highland Springs Avenue and Crooked Creek, Beaumont.
TEWS #2	11-13-17	11-21-17	El Casco–Banning Connection	Water source on Oak Valley Boulevard.
TEWS #3	12-15-17	12-15-17	Banning Connection	Access to existing poles off of Lincoln Street.
TEWS #4	12-18-17	12-18-17	Banning Connection	Access to existing poles off of Wesley Street.
TEWS #5	12-20-17	12-21-17	Banning Connection	Access to existing poles at intersection of Wesley Street and Old Idyllwild Road.
TEWS #6	6-13-18	6-13-18	Timoteo Relocation	Extra workspace to facilitate erection of TSP #4696058 at intersection of Redlands Boulevard and Bryn Mawr Street.
TEWS #7	7-27-18	7-30-18	Timoteo Relocation	Extra workspace to facilitate wire pulling activities along Research Drive and Almond Avenue.
TEWS #8	8-27-18	8-28-18	Dental/Intern Circuits	DENIED AND RESCINDED – Extra workspace to facilitate construction along Mission Road.
TEWS #9	10-18-18	10-19-18	Timoteo Relocation	Extra workspace for walking path at Bryn Mawr and I-10.
TEWS #10	11-05-18	11-05-18	Timoteo Relocation	Extra workspace along Barton and Mountain View Roads for cutover operations.
TEWS #11	01-30-19	01-31-19	Timoteo Relocation	Extra workspace to facilitate the removal of fiber optic cable from overhead poles north along Mountain View Avenue and east along Redlands Boulevard.
TEWS #12	02-06-19	02-07-19	Timoteo Relocation	Extra workspace along Mountain View Avenue for subtransmission pole removal.
TEWS #13	02-26-19	02-26-19	Segment 3	Temporary access road detour for vehicle and equipment travel to/from San Timoteo Canyon Road and Tower Site 3X41.
TEWS #14	05-13-19	05-14-19	Banning Connection	Extra workspace along the east side of south Alola Street, City of Banning.
TEWS #15	05-16-19	05-17-19	Segment 1	HLZ and temporary staging area for construction vehicles, materials, and equipment.
TEWS #16	07-24-19	07-24-19	Segment 2	Concrete V-ditch south of 3012 Prado Lane, accessible from approved access roads to Construction Area 2X18.
TEWS #17	08-07-19	08-07-19	Segment 6	Access road for guard pole installation near Construction Area 6S15.

TEWS / MPR	Date Requested	Date Issued	Phase	Description
TEWS #18	08-16-19	08-16-19	Segment 6	Helicopter landing zone and temporary staging area for construction vehicles, materials, and equipment.
TEWS #19	09-05-19	09-05-19	Segment 5	Mobile guard structure on an existing road to Construction Area SF501 for wire stringing activities.
TEWS #20	09-27-19	09-30-19	Segment 6	Mobile guard structure on existing access road to Construction Areas 6S20 and 6S21 for wire stringing activities.
TEWS #21	12-11-19	12-12-19	Etiwanda Substation	Extra workspace within the existing concrete switchrack trench inside the active substation.
TEWS #22	01-31-20	01-31-20	Segment 2	Extra workspace adjacent to Construction Area 2N35 for staging and operating a wire puller.
TEWS #23	03-11-20	03-12-20	Segment 6	Access road near 6N38 for guard structure.
TEWS #24	03-17-20	03-17-20	Segment 5	Extra workspace for staging wire stringing equipment.
TEWS #25	04-08-20	04-08-20	Segment 4	Extra workspace for guard structure near Construction Area 4X25.
TEWS #26	06-26-20	06-26-20	Segment 6	Temporary storage area at Whitewater Rock Company for rubber-tired cranes and equipment over the 4 th of July break.
TEWS #27	09-02-20	09-02-20	Segment 2	Water source on Grand Terrace Road.
TEWS #28	10-27-20	10-27-20	Segment 3	Temporary mobile guard structure locations between 3X25 and 3X27.
TEWS #29	11-22-20	11-23-20	Segment 3	Temporary mobile guard structure location near Construction Area 3X27.
TEWS #30	12-07-20	12-07-20	Segment 3	Temporary mobile guard structure location near Construction Area 3X46.
TEWS #31	04-13-21	04-14-21	Segment 3	Temporary extra work space for telecom work off Oak Valley Parkway in Segment 3.
TEWS #32	04-19-21	04-20-21	Segment 6	Temporary mobile guard structure location on access road between 6N39 and 6N40 in Segment 6.
TEWS #33	04-28-21	04-28-21	Segment 5	Temporary mobile guard structure location on vacant land adjacent to Construction Area 5X29.
TEWS #34	04-28-21	04-28-21	Segment 6	Temporary mobile guard structure location on access road and vacant land in Segment 6.
TEWS #35	06-10-21	06-11-21	Segment 6	Temporary mobile guard structure location on access road and vacant land in Segment 6.
TEWS #36	06-16-21	06-17-21	Segment 5	Temporary mobile guard structure location on access road and developed land in Segment 5.
Minor Project Refinements (MPRs)				
MPR #1	11-17-17	11-22-17	Maraschino Connection	Revisions to the amount of new underground telecom construction.
MPR #2	12-13-17	12-15-17	Maraschino Connection	Addition of two vault work areas on Highland Springs Road.
MPR #3	12-21-17	12-28-17	El Casco–Banning Connection	Adjustments to alignment along Oak Valley Parkway.
MPR #4	12-27-17	1-3-18	Maraschino/El Casco–Banning Connections	Continued use of two fire hydrants previously approved as TEWS #1 and TEWS #2.

TEWS / MPR	Date Requested	Date Issued	Phase	Description
MPR #5	1-16-18	1-22-18	Banning Connection	Continued use of access routes described in TEWS #3, 4, and 5 and temporary access paths through private property along Coyote Trail.
MPR #6	2-8-18	2-12-18	Project-wide	Use of 10 water sources to support construction activities.
MPR #7	2-23-18	2-28-18	Poultry MY	Temporary water and electrical supply to yard.
MPR #8	2-27-18	3-2-18	El Casco Connection/ Segment 1	New telecom splice location and single new steel pole installation.
MPR #9	3-26-18	3-27-18	El Casco Connection	Telecom work areas along El Casco Substation access road.
MPR #10	4-6-18	4-9-18	Mountain View #1 MY/All subtrans	Additional workspaces at Mountain View #1 MY entry and at subtransmission improvements work areas.
MPR #11	5-4-18	5-8-18	Tennessee Relocation	Relocation of 5 subtransmission structures from the east side to the west side of Nevada Street.
MPR #12	5-14-18	5-16-18	Timoteo Relocation	Additional workspace for TSP erection at Bryn Mawr Avenue and Interstate 10.
MPR #13	5-23-18	5-25-18	Project-wide	Addition of encased fire hose to O'Grady Court water source and use of 17 water sources to support construction activities.
MPR #14	5-24-18	5-31-18	Timoteo/ Tennessee Relocations	Location shift of 3 TSPs and 1 vault location.
MPR #15	5-31-18	6-4-18	Poultry MY	Paving of access road and trailer complex area.
MPR #16	6-11-18	6-13-18	Banning Connection	Shift of horizontal directional drilling (HDD) alignment through Smith Creek and addition of walking paths along Coyote Trail.
MPR #17	6-20-18	6-22-18	Dental Circuit/ Tennessee Relocation	Additional workspace along Mission Road, Lugonia Avenue, and Nevada Street.
MPR #18	8-3-18	8-7-18	Timoteo Relocation/ Beaumont #2 MY	Expansion of vault installation work area off Mountain View Avenue and new water source near Beaumont #2 MY.
MPR #19	8-13-18	8-20-18	Segment 4	Additional workspace requests at Sites 4N58, 4N59, and 4N64.
MPR #20	8-21-18	8-27-18	Banning Connection	Use of unpaved access road west of Smith Creek.
MPR #21	10-4-18	10-10-18	Project-wide/ Segments 3&4	Use of 6 water sources, installation of water tank, use of access road, and expansion of WSS.
MPR #22	11-19-18	11-20-18	Subtrans and Telecom	Pole replacement, switch replacement, and shift in underground telecom route.
MPR #23	12-11-18	12-21-18	Transmission	Site 3N32 and Move 3 work areas.
MPR #24	01-15-19	01-28-19	Transmission	Additional Wire Stringing Site in Segment 1.
MPR #25	03-11-19	03-14-19	Transmission	Additional work area west of Supersite 3X55, Segment 3.
MPR #26	04-02-19	04-04-19	Transmission	Use of Prado Lane access road (Segment 2) and two existing hydrants (Segment 6).
MPR #27	04-30-19	05-01-19	Transmission	Use of two existing hydrants (Segment 1), water tank (Segment 2), and helicopter work area (Segment 3).

TEWS / MPR	Date Requested	Date Issued	Phase	Description
MPR #28	05-31-19	06-06-19	Transmission	Extra workspace areas, including helicopter landing zones and access roads, on Segments 1, 2, and 6.
MPR #29	06-27-19	07-03-19	Transmission	Extra workspace areas for equipment/material staging, wire stringing, and telecom work, on Segments 3, 4, and 6.
MPR #30	08-01-19	08-06-19	Subtrans and Telecom	Additional workspaces for Maraschino and Devers Telecom Cable Removals, Segments 4 and 6.
MPR #31	10-2-19	10-08-19	Transmission	Extra temporary work areas for wire stringing on Segment 2 and use of an existing access road on Segment 4.
MPR #32	11-18-19	12-03-19	Transmission	Additional work areas for Segments 4 and 6 construction activities.
MPR #33	01-08-20	01-09-20	Transmission	Installation of platform in existing tower to facilitate RTHA nest relocation.
MPR #34	02-19-20	03-02-20	Transmission	Additional Move 8 work areas and access road to the Match MY.
MPR #35	04-14-20	04-15-20	Transmission	Additional Move 8 work areas on Segments 2, 4, and 6.
MPR #36	05-06-20	05-08-20	Transmission	Additional guard structure work area on Segment 6.
MPR #37	06-03-20	06-08-20	Transmission	Scour countermeasures and additional work areas on Segment 6.
MPR #38	06-30-20	07-07-20	Transmission	Additional work areas for material and equipment staging, McCarthy drain installation, and erosion repairs, Segments 2, 3, and 4.
MPR #39	07-21-20	07-23-20	Transmission	Additional work areas for wire stringing and wreck-out activities on Segment 3, 4, and 6.
MPR #40	09-14-20	09-18-20	Transmission	Additional MAC drains on Segments 2 and 3, additional wire stringing work area at Construction Area 4S56, and a fire hydrant on Segment 2.
MPR #41	10-14-20	10-16-20	Transmission	Additional Mac Drain at Construction Area 3X64 on Segment 3.
MPR #42	11-11-20	11-12-20	Transmission	Additional work area for mobile guard structure west of Construction Area 3S03 on Segment 3.
MPR #43	12-17-20	01-04-21	Transmission	McCarthy Drain replacements, retaining wall, and two permanent nest platforms on Segments 2, 3, and 4.
MPR #44	02-16-21	2-17-21	Transmission	Additional temporary work area for material and equipment staging during wire wreck-out activities at Construction Area 3X51 on Segment 3.
MPR #45	03-04-21	3-16-21	Transmission	Additional temporary work area for material and equipment staging during wire wreck-out activities on Segments 3, 4, and 6 and new and relocated McCarthy Drains on Segments 3 and 4.
MPR #46	04-05-21	04-13-21	Transmission	Additional McCarthy Drains in Segment 3, additional temporary work areas for material and equipment staging during wire wreck-out activities on Segment 4, temporary work area for material and equipment staging during telecommunication work activities on Segment 4, and a request for an exemption from MM VR-3a on Segment 2.
MPR #47	05-13-21	05-21-21	Transmission	Additional work area for rip rap in Segment 2, additional temporary work area for materials and equipment staging during wire wreck-out activities on Segment 4, and an exemption to MM VR-3a for the natural rock wall construction for hilfiker walls on Segments 2 and 3.

TEWS / MPR	Date Requested	Date Issued	Phase	Description
MPR #48	05-28-21	06-04-21	Transmission	Expanded work area to accommodate the relocation of a retaining wall, Segment 2.
MPR #49	06-22-21	Under review	Transmission	The transfer of rock, sand and gravel material to the Beaumont-Cherry Balley Recreation and Park District.

CPUC Compliance Incidents, Project Memoranda (PMs) and Non-Compliance Reports (NCRs)

No Incidents, PMs, or NCRs were issued by the CPUC EM during the subject reporting period. Table 3 summarizes the CPUC Incidents, PMs, and NCRs issued to date.

Table 3
CPUC Incidents, Project Memoranda, and Non-Compliance Reports
 (Updated 06/24/21)

Incident/ PM/NCR	Regulatory Requirement	Date Issued	Phase	Description
Level 1 Incident	Traffic Control Plan	01-30-18	Banning Connection	Traffic control was set up in such a way that diverted flow into active work area and deviated from approved Traffic Control Plan.
Level 1 Incident	MM WIL-1b	04-19-18	Timoteo/ Tennessee Relocation	A portable water tank was observed uncovered for four consecutive days.
Level 1 Incident	MM VEG-1a	5-24-18	El Casco Substation	Equipment was staged outside of approved disturbance limits for at least 1-2 days.
Level 1 Incident	MM AQ-1a	8-15-18	Banning Connection	Fugitive dust observed from construction activities.
Level 1 Incident	MM WIL-1b	8-15-18	Banning Connection	Use of unapproved access road.
Level 1 Incident	MM WIL-1b	8-15-18	Banning Connection	Use of unapproved staging area.
Level 1 Incident	Fire Management Plan	9-18-18	Segment 4	Lack of adequate fire abatement equipment at 3 locations.
Level 1 Incident	Fire Management Plan	9-20-18	Segment 4	Lack of adequate fire abatement equipment
Level 1 Incident	HH-1a	10-17-18	Segment 4	Lack of proper secondary containment for 4 pieces of equipment.
Level 1 Incident	N-1a	10-17-18	Segment 4	Work outside of approved hours
Level 1 Incident	WIL-1b	10-18-18	Grand Terrace MY	Lack of proper covering for pipes between 1.5" to 4"
Level 1 Incident	N-1a	10-18-18	Segment 4	Work outside of approved hours
Level 1 Incident	AQ-1a	10-30-18	Grand Terrace MY	Fugitive Dust Emissions Outside of Property Boundaries at the Grand Terrace Yard.
Level 1 Incident	WIL-1b	01-24-19	Segment 3	Pipes/tubing left open at Sites 3X08 and 3X10.

Incident/ PM/NCR	Regulatory Requirement	Date Issued	Phase	Description
Level 1 Incident	AQ-1a	02-13-19	Segment 3	Fugitive dust along Segment 3 access road to 3X06.
Level 2 Incident	VEG-3a	02-13-19	Segment 3	Offsite sediment discharge from access road into JD ID 3054.
Level 1 Incident	SWPPP	09-25-19	Segment 6	The disposal of slurry at tower sites in Segment 6.
Level 1 Incident	SWPPP	10-22-19	Devers, Match, and Poultry MY	Improper storage of treated wood poles.
Level 1 Incident	VEG-1c	12-06-19	Segment 2	Materials staged outside of approved work limits just north of M4-T3.
Level 1 Incident	MMCRP	03-16-20	Segment 5	Material and equipment staged outside of approved disturbance areas between Construction Areas 5X28 and 5X29.
Level 1 Incident	WIL-1C	05-11-20	Segment 4	Tower assembly within 150 feet of an active common raven nest and an expired nest buffer reduction at Construction Area 4X24.
Level 1 Incident	WIL-1b	08-06-20	Poultry MY	Several piles of construction pipes were observed uncovered within the Poultry MY.
Level 1 Incident	MMCRP	10-27-20	Segments 3 and 4	Construction vehicles and equipment outside approved construction areas at Construction Area 4X45 and between Construction Areas 3X26 and 3X27.

PROJECT PHOTOGRAPHS



Photo 1 – Hilfiker wall excavation at Construction Area SWA-2-2N12-2-MPR-43, Segment 2 (June 16, 2021).



Photo 2 – Site restoration activities at Construction Area 3X44, Segment 3 (June 15, 2021).

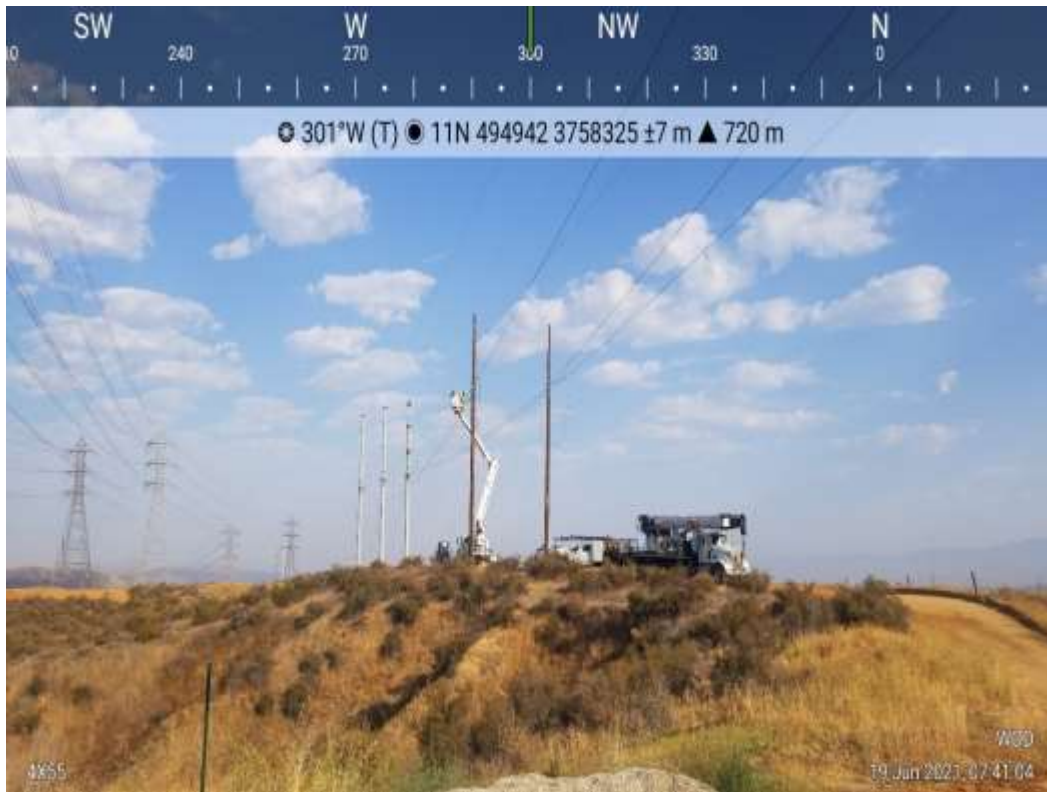


Photo 3 – Wire wreck-out activities at Construction Area 4X44, Segment 4 (June 19, 2021) (Photo courtesy of SCE).



Photo 4 – Restoration monitoring at Construction Area 4N63, Segment 4 (June 16, 2021) (Photo courtesy of SCE).



Photo 5 – Foundation wreck-out at Construction Area 4175193E (5X29), Segment 5 (June 15, 2021).



Photo 6 – Helicopter wire wreck-out activities and traffic control at Construction Area 6N28, Segment 6 (June 15, 2021).