

SCE's Proposed West of Devers Upgrade Project



**CPUC / BLM
Scoping Meeting
for preparation of a
Draft EIR/EIS**



May 19-21, 2014

Meeting Participants & Agenda



- **Introduction of Speakers; Agenda Summary**
Chester Britt, Arellano & Associates
- **Purpose of Scoping – Chester Britt**
- **Description of Proposed Project – Susan Lee, Aspen**
- **CPUC Process and Schedule**
Billie Blanchard, CPUC
- **BLM Process and Schedule**
John Kalish, BLM
- **EIR/EIS Process – Susan Lee**
- **Comments from the Public and Agencies**

The Purpose of Scoping



- To inform the public and responsible agencies about an upcoming project for which an EIR/EIS will be prepared
- To inform the public about the environmental review process
- To solicit input regarding the potential alternatives to the proposed project and the appropriate scope of issues to be studied in the EIR/EIS
- To identify issues of concern and areas of potential controversy
- Scoping Report will be prepared and distributed to repositories, and placed on project website

Key Players and their Roles in the CEQA/NEPA Process



- California Public Utilities Commission (CPUC): Lead Agency under California Environmental Quality Act (CEQA)
- Bureau of Land Management (BLM): Lead Agency under National Environmental Policy Act (NEPA)
- Southern California Edison Company (SCE): the Applicant
- Aspen Environmental Group: Environmental Consultant to the CPUC/BLM

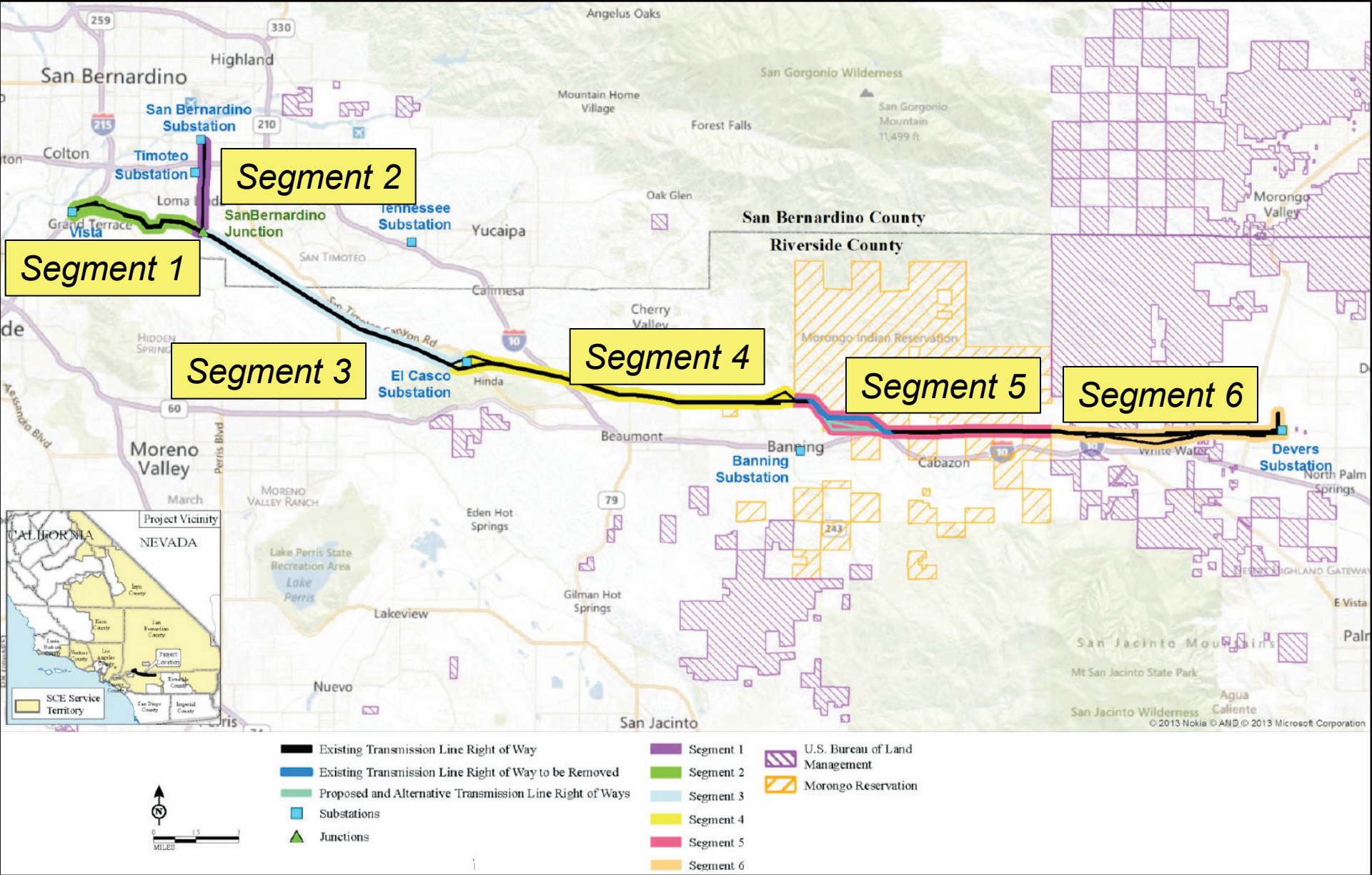
Description of the Proposed Project: Transmission Components



Major elements of SCE's West of Devers Upgrade Project:

- Replacing existing 220 kV transmission lines with higher-capacity 220 kV transmission lines; removal of older existing towers
- Transmission line changes would occur over 45 miles.
- Construction could take 3 to 4 years; online in 2019/2020

Segment	New Towers	Removed Towers	Segment	New Towers	Removed Towers
1. San Bernardino	61	45	4. Beaumont, Banning	136	175
2. Colton, Loma Linda	35	29	5. Morongo Tribal Lands	108	137
3. San Timoteo Canyon	133	116	6. Whitewater, Devers	93	116



West of Devers Upgrade Project divides transmission line into 6 segments, numbered from west to east

Description of the Proposed Project: Other Components



Major non-transmission elements of SCE's West of Devers Upgrade Project:

- Upgrade substation equipment at Devers, El Casco, Etiwanda, San Bernardino, and Vista Substations
- Upgrade Timoteo and Tennessee 66/12 kV Substations to accommodate 66 kV subtransmission line relocations;
- Remove and relocate 2 miles of existing 66 kV subtransmission lines;
- Remove and relocate 4 miles of existing 12 kV distribution lines; and
- Install telecommunication lines and equipment for the protection, monitoring, and control of transmission lines and substation equipment.

Morongo Tribal Investment Option



- SCE and Morongo Transmission LLC have executed a Development and Coordination Agreement (DCA) which provides for an option to lease electricity transfer capability in the WOD transmission line
- This option was a key factor in the negotiation of the ROW agreement between SCE and Morongo to permit continued operation of existing and proposed upgrades on Morongo Land
- The option is exercisable at the commercial operation date of the project
- Approvals for the transaction are required from FERC and the CPUC before the option may be exercised

Need for the Proposed West of Devers Upgrade Project



SCE's major objective for the West of Devers Upgrade Project is to increase the now-limited electricity transfer capacity into the LA Basin from the desert.

Specifically, SCE states that the project would:

1. Allow SCE to fully deliver the output of new generation projects located in the Blythe and Desert Center areas.
2. Maximize the use of existing transmission line rights-of-way consistent with prudent transmission planning.
3. Meet project need while minimizing environmental impacts.
4. Facilitate progress toward achieving California's RPS goals.
5. Comply with applicable Reliability Standards and SCE's approved design, and construction standards.
6. Construct facilities in a timely and cost-effective manner by minimizing service interruptions to the extent practicable.

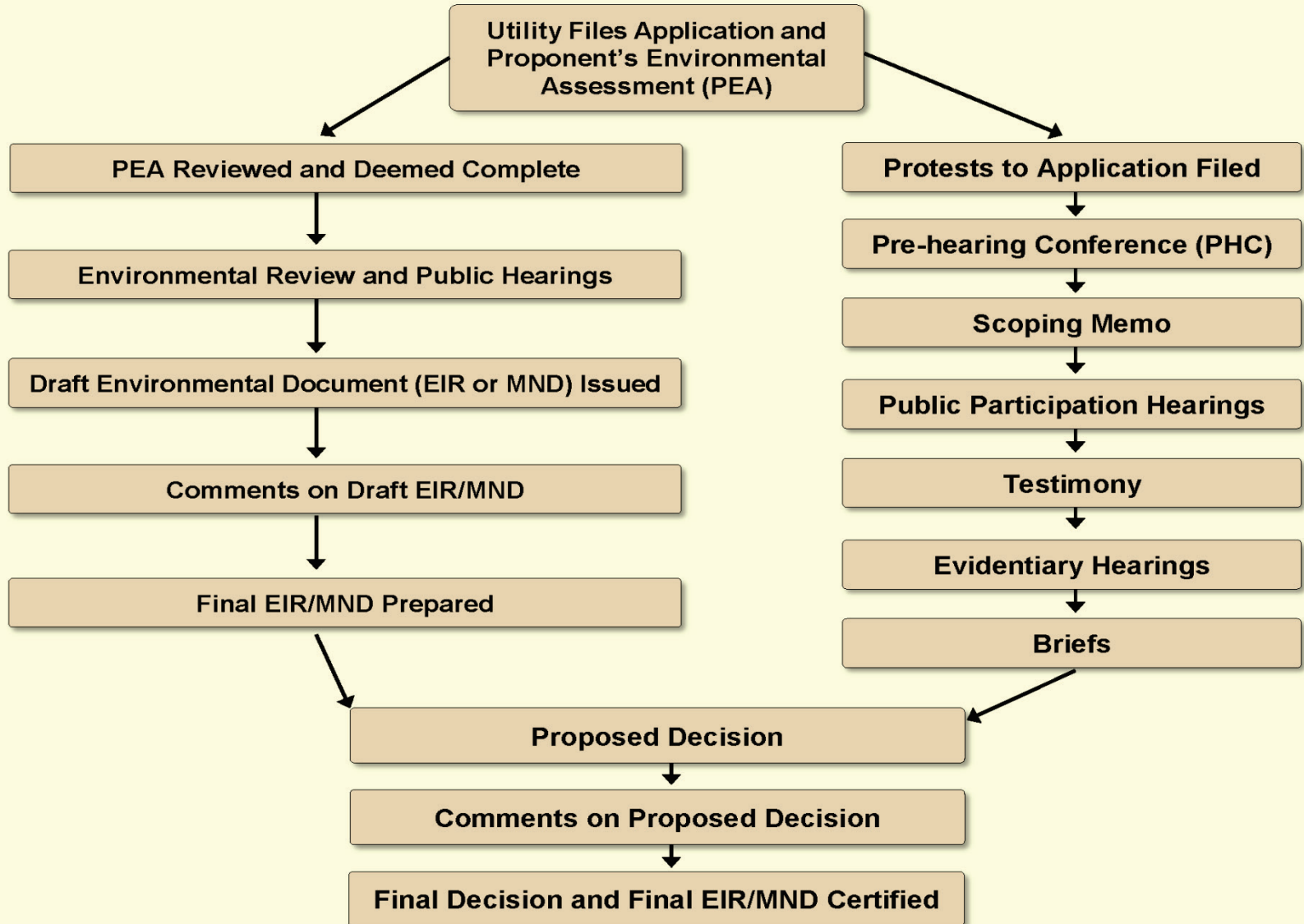
CPUC Review Process



The CPUC has two parallel review processes for this SCE Application for a Certificate of Public Convenience and Necessity (CPCN):

- General Proceeding: Applications # A.13-10-020
- Environmental Review: the CEQA/NEPA process

CPUC Process



General Proceeding for Certificate of Public Convenience and Necessity (CPCN)



Led by:

- Assigned Commissioner Michael Peevey and Administrative Law Judge Jessica Hecht

Scope (defined by Public Utilities Code Section 1002):

- Determine need for the project (facilities are necessary to promote the safety, health, comfort, and convenience of the public)
- Consider community values, recreational and park areas, historic and aesthetic values
- Review environmental impacts as required by the California Environmental Quality Act (CEQA)

CPUC General Proceeding



CPUC General Proceeding Schedule	
First Pre-Hearing Conference	After Release of Draft EIR/EIS
Second Prehearing Conference and Public Participation Hearing	To be determined by ALJ
Scoping Memo for General Proceeding	After pre-hearing conference, as determined by ALJ
Testimony Exchanged	To be determined by ALJ
Evidentiary Hearings	To be determined by ALJ
ALJ's Proposed Decision	To be determined by ALJ
Final Decision by CPUC	To be determined by ALJ

Environmental Review Schedule: CEQA



SCE filed CPCN Application and Proponent's Environmental Assessment	October 25, 2013
Notice of Preparation for EIR	May 12, 2014
CEQA Public Scoping for EIR/EIS	May 12 – June 12, 2014
Public Review of Draft EIR/EIS ■ 45-day Comment Period ■ Public Consultation	Estimated Fall 2014
Final EIR/EIS	Early 2015
EIR Certified by CPUC	Spring 2015

BLM Process



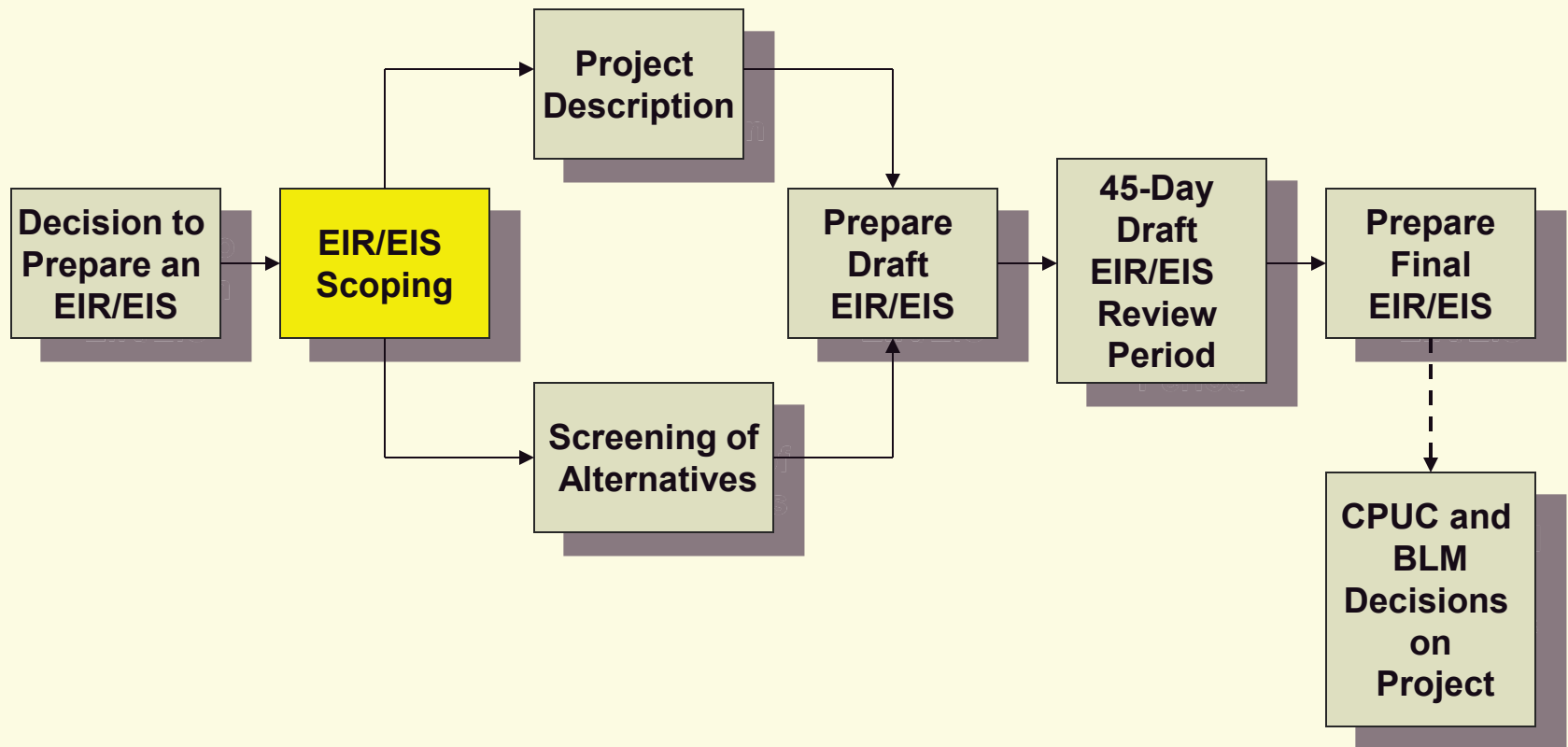
- SCE filed BLM Plan of Development for project on March 7, 2014
- A revised ROW must be granted to cross BLM-administered lands:
 - 1.1 linear miles in Riverside County and access roads
- Nation to Nation Consultation Process with interested tribes
- Notice of Intent to Prepare an EIS will be published in Federal Register
 - BLM will hold an additional scoping meeting within another 30 day scoping period: likely June/July 2014

Other Key Agencies and Tribes



- Cities and Counties along the route
 - Riverside & San Bernardino Counties
 - Cities of Banning, Beaumont, Calimesa, Redlands, Loma Linda, Grand Terrace, Colton
- Morongo Band of Mission Indians
- Other interested tribes
- U.S. Bureau of Indian Affairs
- U.S. Fish & Wildlife Service
- CA Department of Fish & Wildlife
- CA State Historic Preservation Office

The EIR/EIS Process



General Contents and Purpose of an EIR/EIS



Contents:

- Describe the environmental setting of the project area
- Disclose the potential environmental impacts of the project and alternatives
- Propose measures to reduce or avoid significant environmental impacts (mitigation measures)

Purpose:

- Provide technically sound information for decision-makers to consider in evaluating the proposed project

Major Elements of an EIR/EIS



- Detailed Project Description
- Description of Alternatives Screening Process and Alternatives Carried Forward
- Impacts of Proposed Project
- Impacts of Alternatives
- Mitigation Measures
- Cumulative Impacts, Indirect Impacts, Growth Inducing Effects
- Mitigation Monitoring

Environmental Disciplines Included in an EIR/EIS



- Aesthetics
- Agriculture
- Air Quality
- Biological Resources
- Cultural Resources
- Environmental Justice
- Geology & Soils
- Hydrology & Water Quality
- Land Use
- Noise
- Paleontology
- Public Health & Safety
- Recreation
- Socioeconomics
- Transportation & Traffic
- Utilities

Alternatives Analysis



Reasonable range of alternatives determined by:

- Consistency with most project objectives
 - Meeting all objectives is not required
- Ability to reduce or avoid impacts of proposed project
 - Scoping comments will help identify impacts
- Feasibility
 - Technical concerns (can it be built?)
 - Regulatory feasibility (could it be permitted?)
 - Legal issues (would it be allowed under law?)

Alternatives Analysis



Screening of alternatives analysis will include consideration of:

- Transmission design and location alternatives within existing right-of-way
- Reconsideration of SCE's PEA alternatives
- Reconsideration of alternatives eliminated by SCE
- Alternatives suggested in scoping comments

After EIR/EIS Completion



CPUC:

- Commission will vote on the project
- EIR is referenced in the Decision
- If the project or an alternative is approved, the Decision will require monitoring of adopted mitigation measures and definition of mitigation monitoring procedures.

BLM:

- 30-day comment/protest period following publication of Final EIR/EIS
- Prepare Record of Decision

EIR/EIS Scoping Comments



The most useful scoping comments —

1. Identify the location and extent of environmental impacts of the proposed project.
2. Recommend alternatives that would avoid or reduce impacts of the proposed project.

Written Scoping Comments For CPUC Scoping Must be Postmarked by June 12, 2014



Please send comments to:

Billie Blanchard (CPUC) / Brian Paul (BLM)

c/o Aspen Environmental Group
235 Montgomery Street, Suite 935
San Francisco, CA 94104

or

E-mail: westofdevers@aspeneq.com

Fax: (888) 456-0254

Please be sure to include your name, address,
and phone number on all comments.

Reminder: An additional Scoping Period will be held
by BLM in June or July 2014.

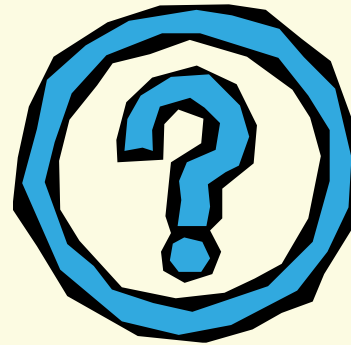
For More Information:



- Check our website:

<http://www.cpuc.ca.gov/environment/info/asp/westofdevers/westofdevers.htm>

- Information Repositories: 15 area libraries and offices have project information
- E-mail us at: **westofdevers@aspenerg.com**
- Call the Project Information Line: (888) 456-0254 (voice or fax)



Additional Questions?



Thank you for coming!