



Rebecca Giles
Regulatory Case Manager
San Diego Gas and Electric Company
8330 Century Park Court
San Diego, CA 92123-1530

April 19, 2013

Reg.12-10/A.12-10-009
SDG&E CNF PTC Application

Sent Via Electronic Mail

Lisa Orsaba
California Public Utilities Commission
Energy Division
505 Van Ness Avenue
San Francisco, CA 94102

and

Rica Nitka
Dudek
605 Third Street
Encinitas, CA 92024

Subject: ED-SDG&E-03 SDG&E Revised Plan of Development (POD).

Dear Ms. Orsaba and Ms. Nitka:

San Diego Gas and Electric Company's (SDG&E) hereby submits responses to Data Request No. 3 – Completeness Review, dated February 27, 2013.

As requested in Data Request No. 3 - Completeness Review and as discussed with Energy Division and Forest Service, SDG&E has prepared a Revised Plan of Development (POD) that incorporates responses to Energy Division Data Requests 1, 2, and 3 (which in turn include responses to Forest Service comments). For your convenience, and as we discussed, I am enclosing both a clean version of the Revised POD as well as a redline version showing the changes. To facilitate your review of these revisions, SDG&E has prepared two charts summarizing the revisions. Changes requested by Energy Division and/or Forest Service in comments or data requests are described as "Agency Requested Changes Reflected in the Revised POD". Additional minor revisions to the POD for purposes of reader clarification, technical accuracy, or discussed with Energy Division and Forest Service are identified as "Other Revisions to the Revised POD".

As we have discussed, SDG&E's proposal has not changed since the original Permit to Construct application was filed in October 2012. Nonetheless, SDG&E believes compiling the previous data request responses into a "Revised POD" will enhance and facilitate public scoping during the environmental review process, particularly with respect to potential alternatives to the Proposed Project that may be evaluated during the environmental review process.

Due to the size of the attachments, these documents will be provided through the consultant's website. The access instructions to the website will be provided shortly in a separate email.

This completes the utility's response to the above-referenced data requests.

If you have any questions, please let me know.

Sincerely,

Signed

Rebecca Giles
Regulatory Case Manager

Enclosures

cc: Allen Trial – SDG&E
Estela de Llanos – SDG&E
Tim Knowd – SDG&E
Central Files - SDG&E

John Porteous – Dudek
Bob Hawkins – US Forest Service
Debbie Hobbs – Cleveland National Forest, USFS
Fred Bauermeister – Insignia
Kelli Taylor - Cleveland National Forest, USFS

SDG&E 04/19/13 Response
A. 12-10-009 Cleveland National Forest Power Line Replacement Projects PTC
Energy Division Data Request 03 Dated February 27, 2013

MASTER SPECIAL USE PERMIT

Question #1

Please provide a list of all facilities that are currently permitted on the CNF that would be included in the MSUP. Also, please provide the mileage and/or acreage of each of these facilities, as applicable (see Attachment A.1). Please provide GIS information for the permitted facilities.

San Diego Gas & Electric Company (SDG&E) Response:

SDG&E facilities currently permitted within the Cleveland National Forest (CNF) that may be included in the Master Special Use Permit (MSUP) include the following (all mileages are approximate based on current SDG&E engineering data and the United States Forest Service-[USFS-] provided GIS layer depicting the administrative boundary of the CNF, and are subject to change):

- Transmission Line (TL) 625 (6.5 miles)
- TL626 (8.2 miles)
- TL629 (9.6 miles)
- TL637 (0.4 mile)
- TL682 (2.5 miles)
- TL6923 (1.7 miles)
- Distribution Line or Circuit (C) 67 (<0.01 mile)
- C73 (6.1 miles)
- C78 (1.5 miles)
- C79 (8.1 miles)
- C157 (2.5 miles)
- C212 (4.1 miles)
- C214 (1.3 miles)
- C220 (0.1 miles)
- C236 (<0.1 mile)
- C237 (1.9 miles)
- C240 (0.5 mile)
- C358 (2.6 miles)
- C440 (20.0 miles)
- C441 (5.1 miles)
- C442 (10.6 miles)
- C449 (5.8 miles)
- C524 (0.1 mile)
- C970 (0.1 mile)
- C973 (<0.1 mile)
- C1166 (4.5 miles)
- C1458 (0.2 mile)

SDG&E 04/19/13 Response

A. 12-10-009 Cleveland National Forest Power Line Replacement Projects PTC Energy Division Data Request 03 Dated February 27, 2013

- Access roads (45 miles)
- Glenclyff Substation (0.03 acre)

In addition to these facilities, SDG&E also maintains the following two communication sites within the CNF, which are operated and maintained under separate authorizations and would not be included in the MSUP at this time:

- Los Pinos Communication Site (0.01 acre)
- Monument Peak Communication Site (0.03 acre)

As described in Section 4.0 Facilities Included Under the MSUP of the Revised Plan of Development (April 2013) (Revised POD), some of SDG&E's existing facilities were originally constructed in locations that subsequently fell within USFS administration. As a result, not all of the facilities currently located within the administrative boundary of the CNF will be included under the MSUP. SDG&E will work with the USFS to identify which specific facilities will be included under the MSUP and which will continue to be subject to SDG&E's previously existing rights.

An updated geographic information system (GIS) dataset for the Proposed Action, which includes information regarding the additional facilities located within the CNF, is available on the FTP site. This dataset classifies facilities according to the 69 kV power line and 12 kV distribution line to which they are currently assigned within SDG&E's electric distribution system. Over time, distribution line facilities may be reclassified with different distribution lines as changes to the system are made, such as circuit cutover or load tie-in to another distribution circuit (e.g., the proposed tie-in of existing load on C449 to C441 as part of the Similar Actions).

SDG&E 04/19/13 Response
A. 12-10-009 Cleveland National Forest Power Line Replacement Projects PTC
Energy Division Data Request 03 Dated February 27, 2013

PROJECT DESCRIPTION

Question #1

To clarify distance discrepancies between the POD and GIS data provided, please provide the distance that each existing as well as rebuilt power and distribution line would traverse over various jurisdictions in the table provided as Attachment A.2. Please specifically indicate how many miles would be removed, new underground, and reconducted (new steel poles and removed wood poles) within each jurisdiction as indicated in Attachment A.2.

SDG&E Response:

As part of the data review and validation process, SDG&E identified discrepancies between existing parcel data provided by the San Diego Geographic Information Source (SANGIS) and the USFS GIS layer depicting the administrative boundary of the CNF. As a result, the information requested to be provided in Attachment A.2 may vary depending on which GIS layer is used for these calculations. Because the USFS' GIS layer depicts only the USFS jurisdiction and Attachment A.2 includes data for all additional jurisdictions associated with the Connected and Similar actions, SDG&E has provided this information, as shown in Table 1: Agency Jurisdiction of Existing Project Components, based on the SANGIS data layer. This layer has also been included in the updated GIS dataset for the Revised POD, which is available on the FTP site. For areas in roadways that were not defined in the parcel data, the jurisdiction was attributed to State, County of San Diego, City of San Diego, or Local depending on the administration information available for those roadways.

SDG&E 04/19/13 Response
A. 12-10-009 Cleveland National Forest Power Line Replacement Projects PTC
Energy Division Data Request 03 Dated February 27, 2013

Table 1: Agency Jurisdiction of Existing Project Components

Existing Project Component	Jurisdiction	Number of Miles under Jurisdiction	SDG&E Data Request #3 Response
TL625	CNF	6.25 (reconductor)	6.26 (reconductor)
	State	0.37 (reconductor)	0.27 (reconductor)
	Tribal	0	0
	BLM	0.05 (reconductor)	0.05 (reconductor)
	City of San Diego	1.76 (reconductor)	1.76 (reconductor)
	County of San Diego	0.23 (reconductor)	0.67 (reconductor)
	School District	0	0
	Water Districts	2.91 (reconductor)	2.91 (reconductor)
	Private	10.91 (reconductor)	10.55 (reconductor)
TL626	CNF	7.99 (reconductor)	7.99 (reconductor)
	State	0	0.15 (reconductor)
	Tribal	0	0
	BLM	0	0
	City of San Diego	0	0
	County of San Diego	0	0.31 (reconductor)
	School District	0	0
	Water Districts	0	0
	Private	10.78 (reconductor)	10.33 (reconductor)
TL629	CNF	8.63 (reconductor)	8.95 (reconductor)
	State	0.82 (reconductor)	10.53 (reconductor)
	Tribal (Campo Indian Reservation)	0.50 (reconductor)	0.56 (reconductor)
	BLM	0.71 (reconductor)	0.71 (reconductor)
	City of San Diego	0	0
	County of San Diego	0	4.09 (reconductor)
	School District	0.07 (reconductor)	0.07 (reconductor)
	Water Districts	0	0
	Private	19.09 (reconductor)	15.06 (reconductor)

SDG&E 04/19/13 Response
A. 12-10-009 Cleveland National Forest Power Line Replacement Projects PTC
Energy Division Data Request 03 Dated February 27, 2013

Existing Project Component	Jurisdiction	Number of Miles under Jurisdiction	SDG&E Data Request #3 Response
TL682	CNF	1.32 (reconductor)	1.32 (reconductor)
	State	0.21 (reconductor)	2.17 (reconductor)
	Tribal (La Jolla Indian Reservation)	3.25 (reconductor)	3.06 (reconductor)
	Tribal (Yuima Indian Reservation)	--	0.18 (reconductor)
	BLM	0	0
	City of San Diego	0	0
	County of San Diego	0	0.03 (reconductor)
	School District	0.27 (reconductor)	0.27 (reconductor)
	Water Districts	6.65 (reconductor)	6.69 (reconductor)
	Private	8.47 (reconductor)	6.44 (reconductor)
TL6923	CNF	2.94 (reconductor)	3.17 (reconductor)
	State	0	0
	Tribal	0	0
	BLM	3.45 (reconductor)	3.22 (reconductor)
	City of San Diego	0.27 (reconductor)	0.27 (reconductor)
	County of San Diego	0	0.01 (reconductor)
	School District	0	0
	Water Districts	0	0
	Private	6.75 (reconductor)	6.73 (reconductor)

SDG&E 04/19/13 Response
A. 12-10-009 Cleveland National Forest Power Line Replacement Projects PTC
Energy Division Data Request 03 Dated February 27, 2013

Existing Project Component	Jurisdiction	Number of Miles under Jurisdiction	SDG&E Data Request #3 Response
C78	CNF	1.41 (removal)	1.41 (removal)
		1.81 (reconductor)	1.81 (reconductor)
	State	0	0
	Tribal (Captain Grande Indian Reservation)	0	0.06 (reconductor)
	BLM	0	0
	City of San Diego	0	0
	County of San Diego	0	0.11 (reconductor)
	School District	0	0
	Water Districts	0	0
	Private	0.02 (removal)	0.02 (removal)
0.27 (reconductor)		0.10 (reconductor)	
C79	CNF	1.85 (removal)	1.85 (removal)
	State	0.38 (removal)	0.38 (removal)
		2.82 (underground)	2.84 (underground)
	Tribal	0	0
	BLM	0	0
	City of San Diego	0	0
	County of San Diego	0	0
	School District	0	0
	Water Districts	0	0
Private	0.02 (underground)	0	
C157	CNF	1.71 (reconductor)	1.71 (reconductor)
	State	0	0
	Tribal	0	0
	BLM	0	0
	City of San Diego	1.20 (reconductor)	1.20 (reconductor)
	County of San Diego	0	0
	School Districts	0	0
	Water Districts	0	0
	Private	0.60 (reconductor)	0.60 (reconductor)

SDG&E 04/19/13 Response
A. 12-10-009 Cleveland National Forest Power Line Replacement Projects PTC
Energy Division Data Request 03 Dated February 27, 2013

Existing Project Component	Jurisdiction	Number of Miles under Jurisdiction	SDG&E Data Request #3 Response
C440	CNF	5.76 (removal)	5.76 (removal)
		4.28 (underground)	4.26 (underground)
		11.87 (reconductor)	11.88 (reconductor)
	State	0.09 (reconductor)	0.09 (reconductor)
	Tribal	0	0
	BLM	0	0
	City of San Diego	0	0
	County of San Diego	0	<0.01 (removal)
		0	4.09 (underground)
		0	0.43 (reconductor)
	School District	0	0
	Water Districts	0	0
	Private	1.39 (removal)	1.38 (removal)
		4.13 (underground)	0
5.09 (reconductor)		4.65 (reconductor)	
C442	CNF	3.67 (reconductor)	3.67 (reconductor)
	State	0	0
	Tribal	0	0
	BLM	0	0
	City of San Diego	0	0
	County of San Diego	0	0
	School District	0	0
	Water Districts	0	0
	Private	2.52 (reconductor)	2.52 (reconductor)

SDG&E 04/19/13 Response
A. 12-10-009 Cleveland National Forest Power Line Replacement Projects PTC
Energy Division Data Request 03 Dated February 27, 2013

Existing Project Component	Jurisdiction	Number of Miles under Jurisdiction	SDG&E Data Request #3 Response
C449	CNF	4.93 (removal)	4.93 (removal)
		0.39 (underground)	0.39 (underground)
		1.72 (reconductor)	1.72 (reconductor)
	State	0	0
	Tribal	0	0
	BLM	0	0
	City of San Diego	0.51 (removal)	0.51 (removal)
		0.41 (reconductor)	0.41 (reconductor)
	County of San Diego	0	0
	School Districts	0.08 (underground)	0.08 (underground)
	Water Districts	0	0
	Private	0.27 (removal)	0.19 (removal)
		1.38 (underground)	0.15 (underground)
0.17 (reconductor)		0.17 (reconductor)	

SDG&E 04/19/13 Response

A. 12-10-009 Cleveland National Forest Power Line Replacement Projects PTC Energy Division Data Request 03 Dated February 27, 2013

Question #2

As part of the reconstruction of C449 please describe and illustrate the proposed 12 kV distribution along TL629 and tie into C441.

SDG&E Response:

As described in Section 4.5.2 C449 of the Revised POD, as part of Similar Actions, SDG&E would remove approximately 0.7 mile of four segments of C449. These areas would be served by the proposed approximately 1.5-mile-long underground line along Buckman Springs Road and Morena Stokes Valley Road, as described in Section 4.4 12 kV Distribution Line Undergrounding, and the 12 kV distribution line underbuilt on TL629D from Cameron Substation to the tie-switch on Pole P192945. A portion of the existing load along this line would also be tied into and become part of C441 underbuilt on TL629C from the tie-switch on Pole P192945 to Glencliff Substation, which is included in part under the MSUP as part of SDG&E's overall distribution system but is outside the CNF boundary where these changes would occur. Figure 1: C449-C441 Underbuild Locations illustrates the proposed 12 kV distribution underbuild along TL629 and tie-in to C441. This figure is also included in the Revised POD as Figure 6: C449-C441 Underbuild Locations.

Question #3

Please provide typical drawings for tangent, angle, and rise poles for distribution lines.

SDG&E Response:

Typical drawings for all steel distribution poles have been provided in Attachment D: Typical Drawings in the Revised POD.

Question #4

The POD describes that 792 feet of TL629 would be undergrounded into the Crestwood Substation however, neither the graphics or GIS data provided show that a portion of TL629 would be undergrounded. Please provide a graphic that depicts the 792 feet of TL629 undergrounded into the Crestwood Substation. Please also provide relevant updated GIS data for this segment.

SDG&E Response:

Figure 2: Proposed Underground Location for TL629 displays the location of the proposed underground segment of TL629 at Crestwood Substation. Additionally, the location of this underground segment is provided in Attachment A: Detailed Route Maps in the Revised POD. GIS data for this segment have also been included in the updated GIS dataset for the Revised POD, which is available on the FTP site.

SDG&E 04/19/13 Response
A. 12-10-009 Cleveland National Forest Power Line Replacement Projects PTC
Energy Division Data Request 03 Dated February 27, 2013

Question #5

SDG&E references the use of state, county, Forest Service, and SDG&E exclusive use roads as providing access to SDG&E electric facilities within and outside of the CNF. It is assumed that access road requirements of each TL and C discussed in the POD refer to SDG&E exclusive use roads only within and outside the CNF. Please confirm.

SDG&E Response:

The access road requirements for each 69 kV power line and 12 kV distribution line discussed in the Revised POD refer to SDG&E exclusive-use roads within and outside of the CNF. The Revised POD considers state and county roads used by SDG&E for access as well as SDG&E exclusive-use roads in Section 7.0 Access and Section 10.6 Transportation and Traffic. SDG&E will work with the USFS to determine which roads within the CNF are SDG&E exclusive-use roads and which roads are public or administrative-use roads maintained by the USFS. A discussion and analysis of the Proposed Action's use of these latter two road categories will be provided in the Final POD.

Question #6

Please provide the number of peak underground crew that would be required for the undergrounding of TL629.

SDG&E Response:

As described in Section 7.7 Personnel and displayed in Table 14: Peak 69 kV Power Line Construction Personnel of the Revised POD, approximately two crews of four people each, or eight total crew members, would be required during the peak construction period for the underground segment of TL629.

Question #7

Please provide the anticipated construction period (in months) for the undergrounding of TL629.

SDG&E Response:

As described in the Section 7.7 Personnel and displayed in Table 12: Proposed 69 kV Power Line Construction Schedule of the Revised POD, the underground segment of TL629 would require approximately 48 crew days over an approximately one-month period to be constructed. Crew days are equivalent to one crew operating for 10 hours within one calendar day. Because multiple crews may be operating during a single calendar day, there are typically multiple crew days per calendar day.

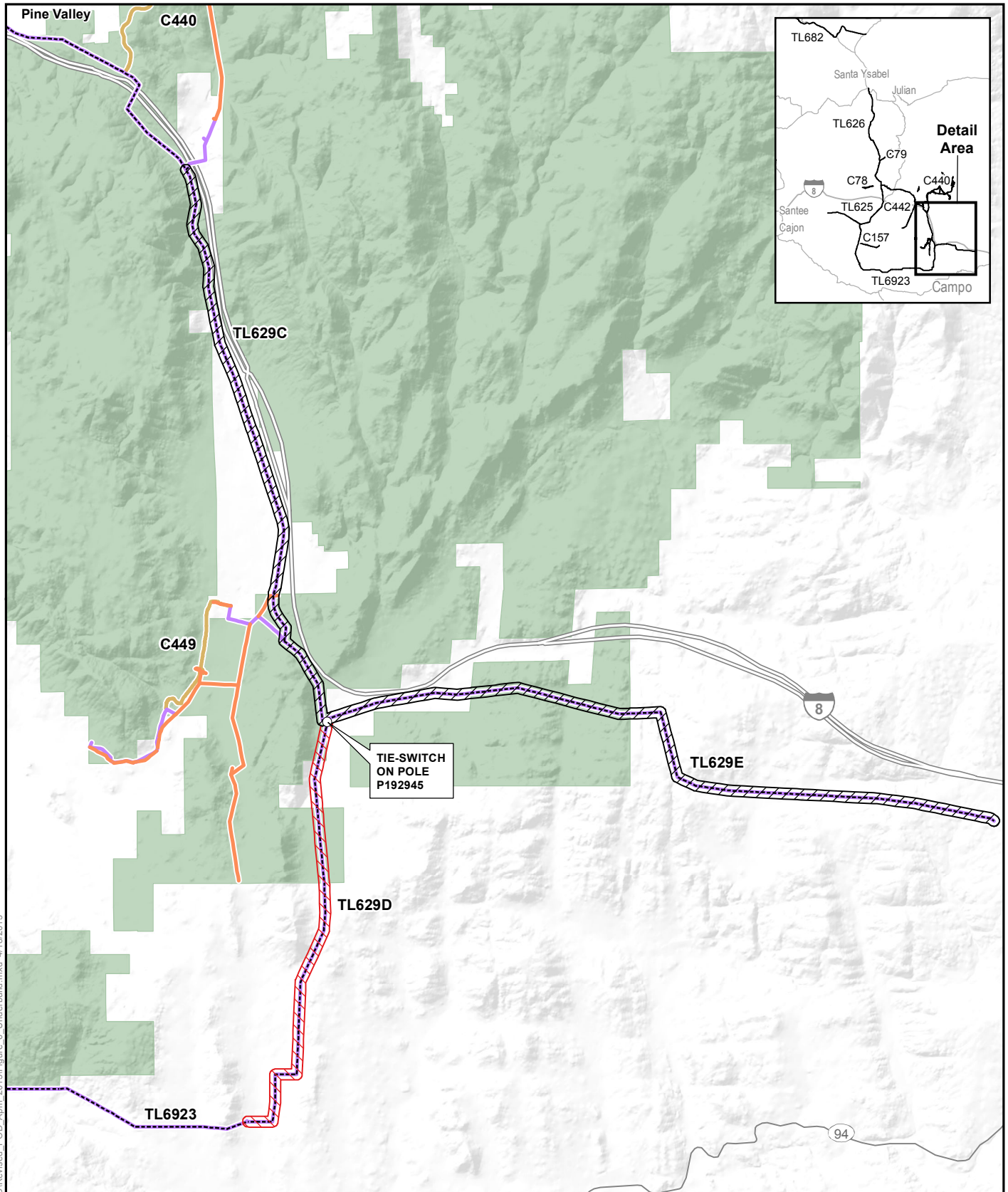


Figure 1: C449-C441 Underbuild Locations

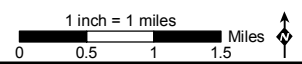
CNF Revised Plan of Development

- Removal
- Undergrounding
- Wood-to-Steel Replacement
- - - 69 kV Power Line Shown with Dashed Line

- C449 Underbuild
- C441 Underbuild

United States Forest Service

- Interstate
- State Highway
- Lake/Reservoir






Z:\Projects\SDGE_CNF_ESRP\MXDs\POD\Revised_POD_April_2013\Figure_6_Underbuild.mxd 4/18/2013

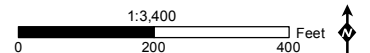
Source: SDG&E, 2013; USFS, 2012



Figure 2: Proposed Underground Location for TL629

CNF Revised Plan of Development

-  Wood-to-Steel Replacement
-  Undergrounding
-  Stringing Site



Z:\Projects\SDGE_CNF_ESRP\MXDs\Data_Request_3\TL629_Underground.mxd 4/5/2013

Source: SDG&E, 2013

SDG&E 04/19/13 Response
A. 12-10-009 Cleveland National Forest Power Line Replacement Projects PTC
Energy Division Data Request 03 Dated February 27, 2013

Question #8

Please provide updated detailed route maps that depict all features described in the text and shown in the legend of the detailed maps, including staging areas, staging areas and fly yards, and fly yards. For example, the POD text indicated that there would be a total of 12 fly yards; however, based on review Attachment A, Detailed Route Maps, only 11 fly yards are depicted on the maps.

SDG&E Response:

The Revised POD includes updated Detailed Route Maps depicting all currently identified work areas for the Proposed Action, Connected Actions, and Similar Actions. These maps are included as Attachment A: Detailed Route Maps and are available on the FTP site.

Question #9

Please clarify discrepancy regarding 12 kV distribution line access road mileage provided in POD Section 4.5 that states that 17.6 miles are within the CNF and POD Table 7, 12 kV Distribution Line Access Road Summary, that shows 15.6 miles within the CNF.

SDG&E Response:

Approximately 15.6 miles of access roads for 12 kV distribution lines proposed to be fire hardened are within the CNF. The length of access roads stated in Section 4.5 Access Road Modification was incorrect and has been updated in the Revised POD.

SDG&E 04/19/13 Response

A. 12-10-009 Cleveland National Forest Power Line Replacement Projects PTC Energy Division Data Request 03 Dated February 27, 2013

ALTERNATIVES

Question #1

After scoping is complete, and in consultation with the Forest Service and the CPUC, please identify a preferred route within the alternative study corridor for TL626. Please provide all relevant information for this route including: number of new and removed poles, associated access road information, temporary and permanent impact areas, staging yards, fly yards, stringing sites, construction schedule (if different), equipment, workforce, land ownership, affected resources, and impact analysis. Please also provide analysis of the entire TL626 proposed alternative route for comparison purposes with TL626 as proposed by SDG&E.

SDG&E Response:

SDG&E will continue to work with the USFS and CPUC after scoping is complete and during the environmental review process to assess the impacts of reconstructing TL626 in place and to identify potential alternatives that would avoid or minimize environmental impacts.

Please see SDG&E's responses to CPUC Data Request 2 Preliminary Plan of Development General Question #2 and USFS Review of the Preliminary Plan of Development Comment Letter 5.1 Relocation of TL 626 (Boulder Creek Line) Question #1 for additional information.

Question #2

After scoping is complete, and in consultation with the Forest Service and the CPUC, please also provide analysis of the entire C157 using the alternative route between the two wilderness areas for comparison purposes with C157 as proposed by SDG&E. Please provide similar level of information for all alternative routes shown to the east.

SDG&E Response:

SDG&E will continue to work with the USFS and CPUC after scoping is complete and during the environmental review process to assess the feasibility and impacts of reconstructing C157 in place and to identify the potential impacts of alternative routes between the two wilderness areas and to the east.

Please see SDG&E's responses to CPUC Data Request 2 Preliminary Plan of Development General Question #2 and USFS Review of the Preliminary Plan of Development Comment Letter 10.8 Wilderness Question #1 for additional information.

SDG&E 04/19/13 Response
A. 12-10-009 Cleveland National Forest Power Line Replacement Projects PTC
Energy Division Data Request 03 Dated February 27, 2013

APPLICANT PROPOSED MEASURES

Question #1

The POD text discusses several things SDG&E would do as part of project implementation; however, they are not identified as applicant proposed measures (APMs). In order to track implementation of these items as part of project construction/operation, as appropriate, please include as APMs in the consolidated list of APMs. A few examples include the following:

POD Section 7, introduction, page 35, “Prior to initiating construction, SDG&E would make all necessary notifications, including landowner notifications.

POD Section 7.2.3, page 51, “SDG&E would notify the Underground Service Alert a minimum of 48 hours in advance of excavating or conducting other ground-disturbing activities in order to identify buried utilities. Exploratory excavations (potholing) would also be conducted to verify the locations of existing facilities in the field, if necessary.”

POD Section 7.6, page 59, “If construction occurs outside the hours allowed by San Diego County, SDG&E would follow its established protocols and would provide advance notice by mail to all property owners within 300 feet of planned construction activities. The announcement would state the construction start date, anticipated completion date, and hours of construction.”

SDG&E Response:

SDG&E has extensive experience constructing, operating, and maintaining 69 kV and 12 kV electrical facilities. Over time, SDG&E has developed standard practices and protocols that are ordinarily incorporated into construction, and operation, and maintenance activities. These ordinary operating restrictions include, among other things, restrictions developed to comply with other applicable regulations, accepted as best management practices within the industry to minimize potential environmental impacts, and/or designed to meet internal SDG&E goals and standards. These ordinary operating restrictions are also sometimes referred to as design features or APMs.

The APMs incorporated into the design of the Proposed Action will avoid or minimize potential environmental resource impacts and are considered part of the baseline for the Proposed Action. The APMs that have been incorporated into the design of the Proposed Project are described according to environmental resource area in Section 10 – Preliminary Environmental Resource Evaluation and listed in Attachment H: Applicant-Proposed Measures of the Revised POD.

SDG&E 04/19/13 Response
A. 12-10-009 Cleveland National Forest Power Line Replacement Projects PTC
Energy Division Data Request 03 Dated February 27, 2013

Question #2

The POD does not include any biological resources APMs. At a minimum please provide an APM that indicates resources are protected in accordance with the Natural Community Conservation Plan and the Low-Impact Habitat Conservation Plan. Also, the POD Section 10.10.0 states that avian protection measures would be implemented but does not describe.

SDG&E Response:

As described previously, SDG&E has included biological resources APMs in Section 10.1 Biological Resources and in Attachment H: Applicant-Proposed Measures in the Revised POD. This section describes restrictions pertaining to biological resources, including implementing protocols identified in SDG&E's Low-Effect Habitat Conservation Plan as well as a list of SDG&E's Natural Community Conservation Plan protocols.



Rebecca Giles
Regulatory Case Manager
San Diego Gas and Electric Company
8330 Century Park Court
San Diego, CA 92123-1530

April 22, 2013

Reg.12-10/A.12-10-009
SDG&E CNF PTC Application

Sent Via Electronic Mail

Lisa Orsaba
California Public Utilities Commission
Energy Division
505 Van Ness Avenue
San Francisco, CA 94102

and

Rica Nitka
Dudek
605 Third Street
Encinitas, CA 92024

Subject: ED-SDG&E-03 SDG&E Revised Plan of Development (POD) – Table of Changes.

Dear Ms. Orsaba and Ms. Nitka:

On Friday, April 19, San Diego Gas and Electric Company's (SDG&E) submitted its responses to Data Request No. 3 – Completeness Review, dated February 27, 2013.

Attached are the two tables summarizing all the changes made between the original version and the revised POD that was provided on Friday, April 19th. These tables were likewise posted in the Igsinia's website.

If you have any questions, please let me know.

Sincerely,

Signed

Rebecca Giles
Regulatory Case Manager

Enclosures

cc: Allen Trial – SDG&E
Estela de Llanos – SDG&E
Tim Knowd – SDG&E
Central Files - SDG&E

John Porteous – Dudek
Bob Hawkins – US Forest Service
Debbie Hobbs – Cleveland National Forest, USFS
Fred Bauermeister – Insignia
Kelli Taylor - Cleveland National Forest, USFS

MINOR DESIGN CHANGES TO THE REVISED PLAN OF DEVELOPMENT (POD)

Section	Revised POD Page(s)	Revision	Rationale
General	--	Preliminary Revised POD	Technical revisions
	--	September 2012 April 2013	
	--	Updated numbering and included other minor editorial changes	
1 – Introduction and Overview of Proposed Action	1	Added language in introduction to explain difference between “Preliminary” and “Revised” POD.	Per discussion with CPUC and USFS on 3/27
	2	Master Special Use Authorization draft MSUP Operating Plan	Technical revision (Consistency with the title of Attachment B)
	8	Deleted “Background” from list of POD sections	Technical revision (POD does not include a “Background” section)
Section 4.1.0 Pole Installation	29	Added 12 kV to the heading for Distribution Pole Type in Table 2: 12 kV Distribution Line Pole Summary	Reader clarification
	27	Changed self-supported steel poles to foundation-supported steel poles	Further clarification between direct-bury and foundation poles
8 – Ongoing Operation and Maintenance Activities	77	Low Effect Habitat Conservation Plan (HCP) <u>Quino Checkerspot Butterfly (<i>Euphydryas editha quino</i>) (QCB) HCP (QCB HCP)</u>	Reader clarification

Section	Revised POD Page(s)	Revision	Rationale
8.1 Pole Brushing	78	Clarified that SDG&E would trim or remove vegetation in the area surrounding 12 kV distribution line poles in addition to 69 kV power line poles	Technical revision (Consistency with Public Resources Code (PRC) 4292 and California Code of Regulations, Title 14, Section 1254)
	78	Corrected the radius around the pole to be cleared to bare ground	Technical revision (Consistency with PRC 4292 requirements)
9 Required Permits and Authorization	82	California Department of Fish and Game (CDFG) California Department of Fish and Wildlife (CDFW)	Technical revision (Agency name has changed)
10.3 Fire Hazards	124	Clarified that no construction work would occur in areas designated with Red Flag Warnings or Project Activity Level E	Technical revision (Consistency with SDG&E Electric Standard Practice No. 113-1 Wildland Fire Prevention & Fire Safety (July 2012))
10.4 Hydrology	129	Added description of poles with Riparian Conservation Areas	Included at the request of the USFS in January 2013
	134	Added description of excavation requirements for micro-pile and poured foundations	Reader clarification
	134	Changed “SDG&E’s BMP Manual” to “SDG&E’s Water Quality BMPs Manual”	Technical revision (Consistency with BMP manual title)
10.8 Wilderness	163-164	Moved footnotes for the California Wilderness Act of 1984 to Section 11 - References	Reader clarification and internal document consistency

AGENCY REQUESTED CHANGES REFLECTED IN THE REVISED PLAN OF DEVELOPMENT (POD)

Section	Revised POD Page(s)	Revision	Data Request
General	--	Updated data tables, text, and figures to include updates resulting from agency requested changes	California Public Utilities Commission (CPUC) Data Requests (DRs) 1, 2, and 3
			United States (U.S.) Forest Service (USFS) Review of the Preliminary POD (Comment Letter)
1 – Introduction and Overview of Proposed Action	3	Added Figure 1: Facilities Included Under the MSUP to show the location of the additional facilities within the CNF not being fire hardened that would be included under the MSUP	CPUC DR 2 General Question #1 and Preliminary POD Question #2
	5	Changed Figure 1: Location Map to Figure 2: Facilities to Be Reconstructed to clarify that the facilities shown are only the ones to be fire hardened	USFS Comment Letter Other Facilities Question #1
			CPUC DR 2 General Question #1 and Preliminary POD Question #2
	USFS Comment Letter Other Facilities Question #1		
2 – Purpose and Need	9-10	Added discussion of CNF Land Management Plan (LMP) goals, objectives, strategies, and standards	CPUC DR 2 Preliminary POD Question #2
	Attachments	Added Attachment D: LMP Policy Consistency Analysis that provided explanation of consistency with the CNF LMP	USFS Comment Letter Purpose and Need Question #1
			CPUC DR 2 Preliminary POD Question #2
USFS Comment Letter			

Section	Revised POD Page(s)	Revision	Data Request
			Purpose and Need Question #1
3 – Route Description	17	Modified the route description for distribution line or circuit (C) 157 to clarify where the line crosses Pine Creek and Hauser wilderness areas	CPUC DR 2 Preliminary POD Question #2
			USFS Comment Letter Wilderness Question #1
			January 2013 Agency Meeting
4.0 Facilities Included Under the MSUP	20	Provided discussion regarding the additional facilities not being fire hardened to be included under the MSUP	CPUC DR 3 MSUP Question #1
4.1.0 Pole Installation	20	Clarified that the steel replacement poles would be reddish-brown in color	CPUC DR 2 Preliminary POD Question #2
			USFS Comment Letter Visual Question #1
	20 and 27	Added length of wood-to-steel conversion for 69 kV power lines and 12 kV distribution lines	CPUC DR 3 Project Description Question #1
	27	Clarified that all new structures will be designed and installed in compliance with the guidelines in the Suggested Practices for Avian Protection on Power Lines Manual developed by the Avian Power Line Interaction Committee (APLIC)	CPUC DR 2 Preliminary POD Question #2
			USFS Comment Letter Biological Resources Question #1
4.1.1 Conductor Installation	30-31	Clarified that the new 69 kV conductors will not result in an increase in system capacity	CPUC DR 2 Preliminary POD Question #2
			USFS Comment Letter Single to Double Circuit Conversion Question #2

Section	Revised POD Page(s)	Revision	Data Request
4.1.2 Installation of Other Facilities	31	Included description of requirement for appurtenant facilities	CPUC DR 2 Preliminary POD Question #2
			USFS Comment Letter Other Facilities Question #1
4.2 Single- to Double-Circuit Conversion	32-33	Clarified that single- to double-circuit conversion will not result in an increase in system capacity	CPUC DR 2 Preliminary POD Question #2
			USFS Comment Letter Single to Double Circuit Conversion Question #1
4.3 69 kV Power Line Undergrounding	33-34	Added description of length of new underground and existing overhead conductor to be replaced with underground on transmission line (TL) 629E	CPUC DR 3 Project Description Question #4
4.5.2 C449	37-38	Added description of C449 and C441 underbuild on TL629	CPUC DR 3 Project Description Question #3
	39	Added Figure 6: C449-C441 Underbuild Locations to depict the location of the underbuild on TL629	
4.6 Access Road Modification	38	Corrected the miles of access roads to support 12 kV distribution lines within the CNF	CPUC DR 3 Project Description Question #9
	38	Added reference to discussion of erosion control measure that have been working over the last few years in Section 7.3 Erosion and Sediment Control and Pollution Prevention	CPUC DR 2 Preliminary POD Question #2
			USFS Comment Letter Access Roads Question #4
	38 and 41	Added discussion of measures to address erosion concerns	CPUC DR 2 Preliminary POD Question #2
			USFS Comment Letter Access Roads Question #4
41	Added reference to additional surveys and evaluation of resource issues for access roads in the MSUP Operating Plan to correct any	CPUC DR 2 Preliminary POD Question #2	

Section	Revised POD Page(s)	Revision	Data Request
		problems that may arise after the Proposed Action is approved	USFS Comment Letter Access Roads Question #4
5.0.0 Environmental Assessment No Action Alternative	42	Updated the Environmental Assessment (EA) No Action Alternative to accurately reflect the description in the EA	CPUC DR 2 Preliminary POD Question #2
			USFS Comment Letter Access Roads Question #4
5.1 Additional Alternatives Requested by the USFS	42-44	Added section to discuss the TL626 and C157 alternatives requested by the USFS	CPUC DR2 POD General Question #2
			USFS Comment Letter Relocation of TL 626 (Boulder Creek Line) Question #1 and Wilderness Question #1
7.0.1 Helicopter Access	51	Clarified that refueling of helicopters may only occur within fly yards outside the CNF, if necessary	CPUC DR2 POD General Question #2
			USFS Comment Letter Helicopter Access Question #1
	54	Added information about helicopter noise prior to 7:00 a.m.	CPUC DR 1 Noise Question #9
			CPUC DR 2 Noise Question #3
CPUC DR2 POD General Question #2			
USFS Comment Letter Helicopter Access Question #1			
7.1 Workspace	55	Added footnote in Table 8: 69 kV Power Line Temporary Work Area	CPUC DR 3 Project

Section	Revised POD Page(s)	Revision	Data Request
		Summary that fly yards may be used for multiple power line or distribution lines to clarify why the total number of fly yards in the table may not equal the total number of fly yards identified for the Proposed Action, Connected Actions, and Similar Actions	Description Question #8
7.3 Erosion and Sediment Control and Pollution Prevention	71	Added discussion of measures to address erosion concerns	CPUC DR 2 Preliminary POD Question #2
			USFS Comment Letter Helicopter Access Question #1 and Hydrology and Water Quality Question #1
7.6 Schedule	74	Clarified that the approximate duration of construction and anticipated construction period originally provided for TL629E referred to the overhead segment	CPUC DR 3 Project Description Question #7
	74	Added approximate duration of construction and anticipated construction period required for the underground segment of TL629E	
7.7 Personnel	75	Added the approximate number of underground crew for TL629E	CPUC DR 3 Project Description Question #6
8.2 Application of Pesticides	78-79	Clarified the procedures for pesticide and herbicide use within the CNF	CPUC DR 2 Preliminary POD Question #2
			USFS Comment Letter Pesticide Application Question #1
10 – Preliminary Environmental Resource Evaluation	81	Clarified that SDG&E implements ordinary operating restrictions that have been included as applicant-proposed measures (APMs) in the Revised POD.	CPUC DR 3 APMs Question #1

Section	Revised POD Page(s)	Revision	Data Request
10.0 Air Quality	83-84	Added a reference to California Ambient Air Quality Standards	CPUC DR 1 Air Quality Question #3
	83-84	Revised the discussion of General Conformity	
	85	Updated Table 17: SDAPCD Criteria Air Pollutant Exceedances During Construction – Proposed Action, Table 18: SDAPCD Criteria Air Pollutant Exceedances During Construction – Connected Actions, and Table 19: SDAPCD Criteria Air Pollutant Exceedances During Construction – Similar Actions to include all criteria air pollutants	CPUC DR 1 Air Quality Question #4
	87	Added an ordinary operating restriction as APM-AIR-05	CPUC DR 3 APMs Question #1
10.1 Biological Resources	113 and 115	Clarified that all structures would be constructed in compliance with APLIC’s Suggested Practices for Avian Protection of Power Lines	CPUC DR 2 Preliminary POD Question #2
			USFS Comment Letter Biological Resources Question #1
	114-115	Added ordinary operating restrictions as APMs for biological resources	CPUC DR 2 Preliminary POD Question #2
USFS Comment Letter Biological Resources Question #1 and #2			
10.2 Cultural Resources	120-122	Updated the APMs to address issues and provide additional clarification	CPUC DR 2 Preliminary POD Question #2 and Project Description Question #1
			USFS Comment Letter Cultural Resources Question #2
	122	Added an ordinary operating restriction as APM-CUL-09	CPUC DR 3 APMs Question #1

Section	Revised POD Page(s)	Revision	Data Request
	122-123	Deleted the reference to Lilac Village	CPUC DR 2 Preliminary POD Question #2 USFS Comment Letter Similar Actions Question #1
10.3 Fire Hazards	127	Added ordinary operating restrictions as APMs for fire hazards	CPUC DR 3 APMs Question #1
10.4 Hydrology	130 and 133-134	Added ordinary operating restrictions as APMs for hydrological resources	CPUC DR 3 APMs Question #1
10.5 Noise	143	Added information about helicopter noise prior to 7:00 a.m.	CPUC DR 1 Noise Question #9
			CPUC DR 2 Noise Question #3
			USFS Comment Letter Helicopter Access Question #1
	144	Added clarification in APM-NOI-06 that no more than 64 flights per day will be conducted	CPUC DR 2 Project Description Question #1
	144	Added APM-NOI-08 for blasting within 325 feet of a residential property line	
144-145	Added ordinary operating restrictions as APMs for noise	CPUC DR 3 APMs Question #1	
10.6 Transportation and Traffic	159	Added ordinary operating restrictions as APMs for transportation and traffic	CPUC DR 3 APMs Question #1

Section	Revised POD Page(s)	Revision	Data Request
10.7 Visual Resources	160	Clarified that the land crossed by C157 does not currently achieve the Very High visual management goal	CPUC DR 2 Preliminary POD Question #2
			USFS Comment Letter Visual Question #1
	160	Added additional justification why the visual change would be consistent with the USFS aesthetic management standards for the CNF, would meet the Scenic Integrity Objectives (SIO), and would not cause a decrease of more than one SIO level.	CPUC DR 2 Preliminary POD Question #2
			USFS Comment Letter Visual Question #1
	161-162	Added an ordinary operating restriction as a APM for visual resources	CPUC DR 3 APMs Question #1



Rebecca Giles
Regulatory Case Manager
San Diego Gas and Electric Company
8330 Century Park Court
San Diego, CA 92123-1530

April 25, 2013

Reg.12-10/A.12-10-009
SDG&E CNF PTC Application

Sent Via Electronic Mail

Lisa Orsaba
California Public Utilities Commission
Energy Division
505 Van Ness Avenue
San Francisco, CA 94102

and

Rica Nitka
Dudek
605 Third Street
Encinitas, CA 92024

Subject: ED-SDG&E-03 SDG&E Supplemental Response - Revised Plan of Development (POD).

Dear Ms. Orsaba and Ms. Nitka:

Attached is San Diego Gas and Electric Company's (SDG&E) supplemental response to Energy Division's (ED) follow up request dated April 22, 2013 seeking additional information on the TL 626 Study Corridor Property Owners List.

This submittal supplements the responses to ED Data Request 3 previously provided on April 19 and 22, 2013.

If you have any questions, please let me know.

Sincerely,

Signed

Rebecca Giles
Regulatory Case Manager

Enclosures

cc: Allen Trial – SDG&E
Estela de Llanos – SDG&E
Tim Knowd – SDG&E
Central Files - SDG&E

John Porteous – Dudek
Bob Hawkins – US Forest Service
Debbie Hobbs – Cleveland National Forest, USFS
Fred Bauermeister – Insignia
Kelli Taylor - Cleveland National Forest, USFS

SDG&E 04/25/13 Supplemental Response
A. 12-10-009 Cleveland National Forest Power Line Replacement Projects PTC
Energy Division Follow-Up to Data Request 3 Dated April 22, 2013
ED-SDGE-003: TL626 Study Corridor Property Owners List

Question 1:

We have received and are now reviewing the data SDG&E provided Friday, April 19, 2013.

At a minimum, however, the CPUC will **need a list of additional property owners that are within 300 feet of the Forest Service TL 626 proposed study corridor, now included in the revised POD.**

SDG&E Response to Q1:

The attached spreadsheet details the parcel ownership information within 300 feet of the TL626 study corridor as well as all parcels within the study corridor. This information is based on the study corridor area and the January 2013 APN information made available by the County of San Diego.



Parcels within 300ft
of TL626 Alt Corridor

The embedded Excel file: Parcels within 300ft of TL Alt Corridor follows.

Line #	APN	OWN_NAME1	OWN_NAME2	OWN_NAME3	OWN_ADDR1	OWN_ADDR2	OWN_ADDR3	OWN_ADDR4	OWN_ZIP	SITUS_ADDR	SITUS_STRE	SITUS_SUFF	LEGLDESC	X_COORD	Y_COORD	Owner_Layer
1	3330200900	UNITED STATES OF AMERICA			PUBLIC AGENCY				0	0	BOULDER CREEK	RD	SEC 4-14-3E*N H*DOC88-469349 IN S H&IN\	6431201.301	1938154.539	UNITED STATES OF AMERICA
2	2902100600	MONTGOMERY JAMES W JR	MONTGOMERY		8160 E DEL PLATINO DR	SCOTTSDALE AZ			85258	5627	POCO MONTANA	RD	SEC 25-13-3E*NEQ*SELY PAR PER ROS 7544 IN SWQ	6447124.946	1949155.879	Private
3	2902302300	HILLSDALE COMMUNITY CLUB OF SAN DIEGO COUNTY			C/O WALT WILCOX	11832 ALTADENA RD	LAKESIDE CA		92040	6131	GOLD DUST		SEC 25-13-3E*SEQ*(EX RD OP)DOC78-71330 IN\	6447881.031	1946622.532	Private
4	3330400500	UNITED STATES OF AMERICA NATIONAL FOREST			PUBLIC AGENCY				0	0			SEC 2-14-3E*NWQ*W H OF\	6439104.379	1939864.914	UNITED STATES OF AMERICA NATIONAL FOREST
5	2902010300	MILLER LAURENCE A	MILLER ALICE K	MILLER DAVID M&ALICE K TRUST 12-05-88	2329 PINE ST	SAN DIEGO CA			92103	0	BOULDER CREEK	RD	SEC 36-13-3E*SW 1/4*W 1/2 OF*	6444279.426	1941742.839	Private
6	2902101700	STOWERS WILFRED E&EVA M			6397 NEWSOME DR	SAN DIEGO CA			92115	7022	FOREST MEADOW	WAY	SEC 25-13-3E*NEQ*NELY PAR PER ROS 7502 IN SEQ OF\	6447965.378	1949753.563	Private
7	2902001200	ZANETEL JAMES A&CHARLENE A			9755 MURRAY DR	LA MESA CA			91942	0	PENSTEMON	LN	PAR 1\	6446013.106	1943715.985	Private
8	2891903700	VALENTINE L P			2244 S SANTA FE AVE #B2	VISTA CA			92084	0	EAGLE PEAK	RD	SEC 14-13-3E*SWQ*PAR C PER DOC99-198423 IN\	6439632.962	1957453.031	Private
9	2900703700	UNITED STATES OF AMERICA FOREST SERVICE			PUBLIC AGENCY				0	0	EAGLE PEAK	RD	SEC 23-13-3E*SWQ**DOC02-1149404 IN W H OF\	6439107.579	1952232.81	UNITED STATES OF AMERICA FOREST SERVICE
10	2900713100	HARTER FAMILY TRUST 08-12-07			1670 COLFAX DR	LEMON GROVE CA			91945	5808	HIGH MEADOW RANCH	LN	PAR 1*PAR A PER DOC95-347066 IN PAR 2&4&IN\	6443690.414	1952248.167	Private
11	3331101700	CARR EMIKO			P O BOX 9040	FORT MOHAVE AZ			86427	0	BOULDER CREEK	RD	SEC 15-14-3E*NW 1/4 OF*POR*	6434966.184	1929401.612	Private
12	2902301900	STEVENSON SCOTT	GAINES SUSAN J		10742 CHALLENGE BLVD	LA MESA CA			91941	15971	STONEY	LANE	SEC 30-13-4E*(EX RD)PAR A PER DOC77-19977 IN SEC 25-13-3E&IN\	6448944.14	1947126.318	Private
13	2902301600	OHAGAN JOHN&MARIE L REVOCABLE TRUST 03-26-92			3617 MORLAN ST	SAN DIEGO CA			92117	7209	COSMIT	LANE	PAR 2\	6448997.2	1946237.446	Private
14	2900712300	SHELTON LIVING TRUST 12-29-04			8261 KAPLAN DR	SAN DIEGO CA			92123	0	BOULDER CREEK	RD	SEC 24-13-3E*SWQ*DOC82-171674 IN W H OF\	6444686.26	1953154.698	Private
15	2901414100	CARRIER GORDON&ROBIN			3636 DUPONT ST	SAN DIEGO CA			92106	17170	BOULDER CREEK	RD	SEC 26-13-3E*NEQ*DOC99-755111 IN NWQ OF SEC 25&IN E H OF\	6443138.681	1950339.333	Private
16	2932120300	CASTRO DONAVAN M&DONIS R			202 1/2 16TH ST	SEAL BEACH CA			90740	5606	FOREST MEADOW	RD	SEC 30-13-4E*NWQ*3.66 AC PAR PER ROS 7467 IN SWQ OF\	6449068.422	1948999.789	Private
17	3330602000	ROLLIN OTTO JR TRUST 01-22-04			P O BOX 1079	PINE VALLEY CA			91962	0	BOULDER CREEK	RD	SEC 10-14-3E*SWQ*PAR PER ROS 13841 IN S H OF\	6434416.417	1931013.108	Private
18	3331300100	MILLER CHRISTOPHER G&SOMMERS MICHELE W	SOMMERS ROBERT S		9382 DECAMP DR	LA MESA CA			91942	0	BOULDER CREEK	RD	SEC 13-14-3E*SW 1/4*NW 1/4 OF*	6444328.311	1927459.938	Private
19	2902100400	CONNOLLY FAMILY TRUST 11-20-93			P O BOX 1523	JULIAN CA			92036	5614	POCO MONTANA	RD	SEC 25-13-3E*NEQ*SWLY PAR OF ELY 2 PARS PER ROS7568 IN SWQ OF\	6446941.227	1948807.128	Private
20	2891911000	TOWBIN DANIEL&CAROLYNN			5550 W SAHARA AVE	LAS VEGAS NV			89146	4430	BOULDER CREEK	RD	PAR 3*(EX ST)\	6443088.378	1959955.051	Private
21	2902103100	SKANES FRANK A			1198 SUMNER AVE	EL CAJON CA			92021	5708	POCO MONTANA	RD	SEC 25-13-3E*NEQ*NLY PAR OF SLY2 PARS PER ROS 7570 IN SWQ OF\	6446340.311	1949647.26	Private
22	2901420400	MCCULLEY JOSEPH C&BARBARA			9581 VERVAIN ST	SAN DIEGO CA			92129	6618	ENGINEERS	RD	SEC 25-13-3E*SEQ*(EX RD)DOC78-287047 IN\	6447200.497	1947541.325	Private
23	3330601500	UNITED STATES OF AMERICA NATIONAL FOREST			PUBLIC AGENCY				0	0			SEC 10-14-3E*SWQ*229.52 AC M/L IN SEQ&IN\	6437231.109	1932742.029	UNITED STATES OF AMERICA NATIONAL FOREST
24	2900711300	ANDERSON CARMEN B TRUST 06-14-06			P O BOX 568	JULIAN CA			92036	0	BOULDER CREEK	RD	PAR 2\	6445564.179	1953180.475	Private
25	2900712500	LEVY THERESA			P O BOX 849	JULIAN CA			92036	5650	BOULDER CREEK	RD	PAR 2\	6444220.837	1954309.359	Private
26	2902010200	MILLER LAURENCE A	MILLER ALICE K	MILLER DAVID M&ALICE K TRUST 12-05-88	2329 PINE ST	SAN DIEGO CA			92103	0	BOULDER CREEK	RD	SEC 35-13-3E*S 1/2 OF*SW 1/4 OF NW 1/4 &*	6440541.791	1942284.511	Private
27	3330700600	UNITED STATES OF AMERICA NATIONAL FOREST			PUBLIC AGENCY				0	0			SEC 11-14-3E*SWQ*SWQ OF NWQ&NWQ OF\	6439073.482	1933341.388	UNITED STATES OF AMERICA NATIONAL FOREST
28	3330300600	UNITED STATES OF AMERICA			PUBLIC AGENCY				0	0	BOULDER CREEK	RD	SEC 3-14-3E*SWQ*W H OF\	6433851.68	1937332.205	UNITED STATES OF AMERICA
29	2902103000	HERSUM LIVING TRUST 09-14-94			4068 MARTIN CANYON CT	BONITA CA			91902	5730	POCO MONTANA	RD	SEC 25-13-3E*NEQ*SWLY PAR OF NELY 2 PARS PER ROS7570 IN SWQ OF\	6446525.621	1949699.331	Private
30	2891910300	TELLAM WILLIAM S&MILDRED E FAMILY TRUST 08-18-93			4612 EAGLE PEAK RD	P O BOX 1063	JULIAN CA		92036	0	EAGLE PEAK	RD	PAR 3*(EX ST)\	6441602.573	1960168.401	Private
31	3330200700	UNITED STATES OF AMERICA NATIONAL FOREST			PUBLIC AGENCY				0	0			SEC 4-14-3E*NWQ*202.47 AC M/L IN NEQ&IN\	6431209.168	1940493.866	UNITED STATES OF AMERICA NATIONAL FOREST
32	2900801900	RIVIER JEAN&CATHERINE TRUST 04-02-86			9674 BLACKGOLD RD	LA JOLLA CA			92037	0	ENGINEERS	RD	SEC 24-13-3E*N H*48.985AC PAR PER ROS IN\	6445837.73	1955710.382	Private
33	2902101300	EDMONDS FAMILY TRUST 08-05-10			6715 MINERAL DR	SAN DIEGO CA			92119	5944	POCO MONTANA	RD	SEC 25-13-3E*E H*SLY PAR PER ROS 7545 IN\	6447406.001	1949165.878	Private
34	2891801600	UNITED STATES OF AMERICA			PUBLIC AGENCY				0	0	BOULDER CREEK	RD	SEC 15-13-3E*S H*PAR 1 PER DOC99-665953 IN\	6433770.17	1958570.156	UNITED STATES OF AMERICA
35	2902200100	FIRTH FAMILY TRUST 08-09-95			25126 KERRI LN	RAMONA CA			92065	5750	FOREST MEADOW	RD	SEC 25-13-3E*WLY PAR OF SLY 2 PARS PER ROS 7533 IN E H OF E H OF\	6447855.282	1948451.973	Private
36	2900713800	LAUGEN PHILLIP R&DONNA J REVOCABLE TRUST NO 1 06-07-91			1943 FRIENDSHIP DR #B	EL CAJON CA			92020	5820	BOULDER CREEK	RD	PAR 4*PAR A PER DOC95-026886 IN SEC 26-13-3E&IN PAR 3&ALL\	6442831.15	1952333.82	Private
37	3330400300	MCCOY CHARLES E TRUST 08-20-92			P O BOX 811	RAMONA CA			92065	0			SEC 2-14-3E*SW 1/4*W 1/2 OF*	6439106.401	1937244.57	Private
38	2902001300	MORENO MARIA P			4545 COLLWOOD BLVD #36	SAN DIEGO CA			92115	0	PENSTEMON	LN	PAR 2\	6445539.184	1943979.04	Private
39	2902001600	KRIESER&CARTWRIGHT FAMILY TRUST 07-19-01			4236 TAMBOR CT	SAN DIEGO CA			92124	0	PENSTEMON	RD	PAR 1\	6448426.017	1944675.628	Private
40	2901411400	UNITED STATES OF AMERICA(INAJA AND COSMIT INDIAN RESERVATION)			PUBLIC AGENCY				0	0			SEC 26-13-3E*E H*W H&(EX E Q)\	6440408.559	1949109.945	UNITED STATES OF AMERICA(INAJA AND COSMIT INDIAN RESERVATION)
41	3330700400	UNITED STATES OF AMERICA			PUBLIC AGENCY				0	0			SEC 11-14-3E*SE 1/4*NE 1/4 OF SW 1/4 & W 1/2 OF*	6441013.101	1932072.492	UNITED STATES OF AMERICA
42	2900711400	HENDERSON GLENN&CARMELA			573 KIDD WAY	EL CAJON CA			92020	0	ENGINEERS	RD	PAR 3\	6445979.251	1953454.601	Private
43	2900711500	PUGA ALVARO&ESPERANZA			4441 DAKOTA DR	SAN DIEGO CA			92117	0	BOULDER CREEK	RD	PAR 4\	6445111.191	1952882.737	Private
44	3330301500	UNITED STATES OF AMERICA			PUBLIC AGENCY				0	0	BOULDER CREEK	RD	SEC 3-14-3E*SEQ*(EX DOC96-487743&DOC96-155900)DOC88-469352 IN\	6437267.327	1936602.803	UNITED STATES OF AMERICA
45	2902302000	MACLEAN MAUREEN L	CHOPRA KAREN LIVING TRUST 02-26-07		P O BOX 1904	JULIAN CA			92036	7256	COSMIT	LANE	SEC 30-13-4E*PAR B PER DOC77-19977 IN SEC25-13-3E&IN\	6448871.606	1946782.401	Private

46	2902100300	MAXWELL JAMES P&LISA J			5316 W FALLS VIEW DR	SAN DIEGO CA			92115	5656	POCO MONTANA	RD	SEC 25-13-3E*NEQ*ELY PAR OF WLY 2 PARS PER ROS 7568 IN SWQ OF\	6446629.14	1948813.346	Private
47	2902102500	SCAVO FRANK J			5960 FOREST MEADOW RD	JULIAN CA			92036	5753	FOREST MEADOW	RD	SEC 25-13-3E*E H*2.78 AC PAR PER ROS 7657 IN E H OF\	6448116.991	1948876.487	Private
48	2891904400	VALENTINE L P			2244 S SANTA FE AVE #B2	VISTA CA			92084	0	EAGLE PEAK	RD	SEC 14-13-3E*SWQ*PAR B PER DOC99-198423 IN S H OF\	6438828.34	1956983.622	Private
49	3331101000	PALMER FAMILY TRUST 11-14-98			9498 DOHENY RD	SANTEE CA			92071	0			SEC 15-14-3E*POR*	6434402.985	1929942.987	Private
50	3330700700	UNITED STATES OF AMERICA NATIONAL FOREST			PUBLIC AGENCY				0	0			SEC 11-14-3E*SWQ*SEQ OF\	6440329.2	1931313.146	UNITED STATES OF AMERICA NATIONAL FOREST
51	3331210200	NAKASHIMA CHERRY TR			8484 ABILENE TER	LA MESA CA			91942	0	BOULDER CREEK	RD	SEC 14-14-3E*SEQ*14.78 AC PAR PER ROS 7582 IN NWQ OF\	6442185.277	1927350.548	Private
52	2901414300	LYON J MICHAEL&ANGELA REVOCABLE TRUST 12-02-98			PMB 105	665 SAN RODOLFO DR #124	SOLANA BEACH CA		92075	5976	HIGH MEADOW RANCH	RD	SEC 25-13-3E*NWQ*DOC99-755115 IN NWQ OF\	6444232.776	1950859.767	Private
53	2902001700	ROWE JEFFREY M&MICHELE S			11151 ALEJO PL	SAN DIEGO CA			92124	0	PENSTEMON	RD	PAR 2\	6447427.766	1944535.723	Private
54	3331201900	UNITED STATES OF AMERICA NATIONAL FOREST			PUBLIC AGENCY				0	0			SEC 14-14-3E*NWQ*NEQ&NEQ OF\	6441672.577	1929530.068	UNITED STATES OF AMERICA NATIONAL FOREST
55	2891905300	TELLAM WILLIAM S&MILDRED E FAMILY TRUST 08-18-93			P O BOX 1063	JULIAN CA			92036	4612	EAGLE PEAK	RD	SEC 14-13-3E*(EX ST)PAR1B PER DOC10-0642659 IN\	6440211.2	1960767.35	Private
56	2891901600	GIRL SCOUTS SAN DIEGO-IMPERIAL COUNCIL INC			1231 UPAS ST	SAN DIEGO CA			92103	0	BOULDER CREEK	RD	SEC 13-13-3E*SWQ*(EX RD WID)DOC27439REC68 IN W H OF\	6444203.718	1957563.744	Private
57	2900704700	UNITED STATES OF AMERICA DEPARTMENT OF AGRICULTURE			PUBLIC AGENCY				0	0	EAGLE PEAK	RD	SEC 23-13-3E*W H*DOC03-472523 IN\	6440375.528	1952288.664	UNITED STATES OF AMERICA DEPARTMENT OF AGRICULTURE
58	2891904100	VALENTINE L P			2244 S SANTA FE AVE #B2	VISTA CA			92084	0	EAGLE PEAK	RD	SEC 14-13-3E*SWQ*PAR C PER DOC99-198423 IN W H OF\	6439597.189	1957898.064	Private
59	2900710300	D&P MANAGEMENT CO L L C			1943 FRIENDSHIP DR #B	EL CAJON CA			92020	0	BOULDER CREEK	RD	PAR 2\	6442571.297	1953222.993	Private
60	2932110100	ROEDER ROBERT E&PATRICIA D TRS			4455 BEVERLY DR	LA MESA CA			91941	5753	MOUNTAIN MEADOW		SEC 30-13-4E*LOTS 1&2*SLY PAR PER ROS7482 IN SEC 25-13-3E&IN\	6448931.482	1949925.353	Private
61	2900711200	SAUNDERS FAMILY TRUST 12-07-94	PETERS LINDA J		4141 PALLON CT	SAN DIEGO CA			92124	0			PAR 1\	6445105.623	1953573.317	Private
62	2901800700	UNITED STATES OF AMERICA NATIONAL FOREST			PUBLIC AGENCY				0	0			SEC 34-13-3E*N H*400.00 AC M/L IN S H&IN\	6435136.931	1944581.933	UNITED STATES OF AMERICA NATIONAL FOREST
63	3330400400	MILLER LAURENCE A	MILLER ALICE K	MILLER DAVID M&ALICE K TRUST 12-05-88	2329 PINE ST	SAN DIEGO CA			92103	0	BOULDER CREEK	RD	SEC 2-14-3E*SW 1/4 OF NE 1/4 & SE 1/4 OF NW 1/4 & LOTS 1 THRU 3*	6441686.372	1939847.365	Private
64	3330400600	UNITED STATES OF AMERICA NATIONAL FOREST			PUBLIC AGENCY				0	0			SEC 2-14-3E*SEQ*E H OF SWQ&SEQ OF NEQ&\	6441683.721	1936983.769	UNITED STATES OF AMERICA NATIONAL FOREST
65	2891910100	TELLAM WILLIAM S&MILDRED E FAMILY TRUST 08-18-93			P O BOX 1063	JULIAN CA			92036	0	EAGLE PEAK	RD	PAR 1*(EX ST)\	6440807.021	1960137.727	Private
66	2900802000	RIVIER JEAN&CATHERINE TRUST 04-02-86			9674 BLACKGOLD RD	LA JOLLA CA			92037	5731	BOULDER CREEK	RD	SEC 24-13-3E*N H*44.70AC PAR PER ROS7573 IN W H&IN\	6445307.414	1954566.794	Private
67	3330510200	BROWN FRANK A&MARGARET L			4502 SANTA CRUZ AVE	SAN DIEGO CA			92107	14740	BOULDER CREEK	RD	PAR 2\	6432371.771	1932976.798	Private
68	2902300600	ALLEN DAVID&JANET JOINT LIVING TRUST			9440 HORNBUCKLE DR	SANTEE CA			92071	6942	ENGINEERS	RD	SEC 36-13-3E*3.27 AC M/L IN SEC 25&IN\	6448312.486	1946067.654	Private
69	2902200700	SCHLUMPBERGER JEROME R&MARY A REVOCABLE TRUST			10412 BOULDER CREEK RD	DESCANSO CA			91916	6037	MOUNTAIN MEADOW		SEC 30-13-4E*SWQ*NLY PAR OF SLY 2 PARS PER ROS 7437 IN W H OF\	6449055.123	1947860.322	Private
70	3330700100	MCCOY CHARLES E TRUST 08-20-92			P O BOX 811	RAMONA CA			92065	0			SEC 11-14-3E*NW 1/4*NW 1/4 OF*	6439099.987	1935258.084	Private
71	3331210300	LANCEY-JEWELL TRUST 12-21-09			3271 MONROE AVE	SAN DIEGO CA			92116	13459	BOULDER CREEK	RD	SEC 14-14-3E*SEQ*20.00 AC PAR PER ROS 7582 IN W H OF NEQ OF\	6442655.219	1927553.056	Private
72	3330301300	UNITED STATES OF AMERICA			PUBLIC AGENCY				0	0	BOULDER CREEK	RD	SEC 3-14-3E*S H*PAR 1 PER DOC96-155900 IN\	6435611.415	1937596.858	UNITED STATES OF AMERICA
73	2900503700	RUTHERFORD STEPHEN P	REUTTER JULIA A		425 W GRAND AVE	ESCONDIDO CA			92025	0	EAGLE PEAK	RD	SEC 22-13-3E*SEQ*(EX DOC02-1149405)SWQ OF\	6436157.479	1952257.431	Private
74	2902201500	SUNLITE INTERNATIONAL INC			P O BOX 50040	SAN DIEGO CA			92165	7077	SANDY CREEK		SEC 25-13-3E*SEQ*NELY 1.00 AC PAR PER ROS 7490 IN\	6448380.737	1948034.061	Private
75	3331210800	UNITED STATES OF AMERICA NATIONAL FOREST			PUBLIC AGENCY				0	0			SEC 14-14-3E*SEQ*SEQ OF SWQ&S H OF\	6441664.066	1926015.524	UNITED STATES OF AMERICA NATIONAL FOREST
76	2901100600	UNITED STATES OF AMERICA NATIONAL FOREST			PUBLIC AGENCY				0	0			SEC 27-13-3E*W H*E H&(EX N H OF NWQ)\	6436015.544	1948509.658	UNITED STATES OF AMERICA NATIONAL FOREST
77	2902302700	MANRING DAVID M&SANDRA J			224 VIA TAQUITA	RAMONA CA			92065	7071	ENGINEERS	RD	SEC 25-13-3E*SEQ*(EX RD)DOC83-23482 IN SEQ OF\	6448213.313	1946736.754	Private
78	2902200400	MCDONALD CHARLES F&LORI L			1001 30TH ST W	BRADENTON FL			34205	7141	SANDY CREEK		SEC 30-13-4E*SWQ*NWLY PAR PER ROS 7437 IN W H OF\	6448969.862	1948182.592	Private
79	2900710200	RANGER FAMILY TRUST 11-16-89			6327 LAKE LOMOND DR	SAN DIEGO CA			92119	5547	BOULDER CREEK	RD	PAR 1\	6442561.208	1953770.819	Private
80	3330700200	UNITED STATES OF AMERICA			PUBLIC AGENCY				0	0			SEC 11-14-3E*NW 1/4*S 1/2 OF SE 1/4 OF*	6440338.228	1933340.058	UNITED STATES OF AMERICA
81	2891800900	VALENTINE L P			2244 S SANTA FE AVE #B2	VISTA CA			92084	0	EAGLE PEAK	RD	SEC 15-13-3E*SEQ*E H OF SEQ OF\	6438058.851	1957348.567	Private
82	3331100400	KEELER MITCHELL A	KEELER MICHAEL D		2161 W CALIFORNIA ST	SAN DIEGO CA			92110	0	BOULDER CREEK	RD	SEC 15-14-3E*POR\	6434608.07	1930062.277	Private
83	3330301700	GREEN STEVEN R LIVING TRUST 07-10-00			P O BOX 188	GOLDEN CO			80402	0	BOULDER CREEK	RD	SEC 3-14-3E*SWQ*DOC01-383452 IN N H OF N H SEC 10&IN SEQ OF\	6435185.969	1935297.304	Private
84	2932120500	STEEBER RICHARD T&SHIRLEY M TRUST 04-11-90			10320 RAMONA DR	SPRING VALLEY CA			91977	5881	MOUNTAIN MEADOW		SEC 30-13-4E*NWQ*2.85AC PAR ROS7521 IN NEQ SEC25-13-3E&IN SWQ OF\	6449157.4	1949391.445	Private
85	2902101500	GIULIANI FAMILY SURVIVORS TRUST A 07-22-80			644 WALSALL RD	EL CAJON CA			92019	5867	FOREST MEADOW	RD	SEC 25-13-3E*NEQ*2.66 AC PAR PER ROS 7502 IN SEQ OF\	6447670.985	1949460.472	Private
86	2900712600	GRANT JOSHUA R			P O BOX 2361	JULIAN CA			92036	0	BOULDER CREEK	RD	PAR 3\	6443828.542	1953621.288	Private
87	3330600300	MOSTAD DEAN			P O BOX 2460	RAMONA CA			92065	0	BOULDER CREEK	RD	SEC 10-14-3E*SIXTY TWO MINE IN\	6435707.191	1932773.216	Private
88	3331001000	HENDERSON PAUL	HENDERSON PATRICIA J		1145 E BARHAM DR #84	SAN MARCOS CA			92078	14640	BOULDER CREEK	RD	SEC 15-14-3E*POR*	6434251.139	1930541.92	Private

89	3330601400	HENDERSON PAUL	HENDERSON PATRICIA J		1145 BARHAM DR #84	SAN MARCOS CA			92078	14652	BOULDER CREEK	RD	SEC 10-14-3E*SW 1/4 OF*POR SW 1/4 OF*	6434197.917	1930727.139	Private
90	2891801700	MARTINEZ FRANK S	MARTINEZ AUGUSTINE D		P O BOX 2374	JULIAN CA			92036	0	EAGLE PEAK RD		SEC 15-13-3E*S H*PAR 1 PER DOC99-700036 IN\	6435882.574	1957737.682	Private
91	3330300300	UNITED STATES OF AMERICA			PUBLIC AGENCY				0	0	BOULDER CREEK	RD	SEC 3-14-3E*SW 1/4 OF*POR*	6434712.331	1937939.963	UNITED STATES OF AMERICA
92	3330200500	UNITED STATES OF AMERICA NATIONAL FOREST			PUBLIC AGENCY				0	0			SEC 4-14-3E*SEQ*SWQ OF NEQ OF SEQ&NWQ OF SEQOF\	6432155.814	1937267.237	UNITED STATES OF AMERICA NATIONAL FOREST
93	2902301800	UNION SUSAN 2002 TRUST			1533 ORANGEVIEW DR	ENCINITAS CA			92024	15847	STONEY	LANE	PAR 1\	6448624.16	1946171.691	Private
94	2902102100	SILVERMAN-FEDORKA FAMILY TRUST 06-09-99			2111 WALES DR	CARDIFF CA			92007	7039	FOREST MEADOW	WAY	SEC 25-13-3E*NEQ*SWLY PAR PER ROS 7522 IN SEQ OF\	6448120.424	1949386.755	Private
95	2902002300	DEHAAN HANS A TRUST 03-01-03			12914 CRISTALLO PL	SAN DIEGO CA			92130	0	PENSTEMON	RD	PAR 1*PAR 1A PER DOC02-504928 IN\	6447705.848	1943206.887	Private
96	2901410300	BANNISTER FAMILY EXEMPTION 1992 TRUST 06-30-92			19242 MCLAREN LN	HUNTINGTON BEACH CA			92646	0	ENGINEERS	RD	SEC 25-13-3E*POR*	6445980.808	1949111.956	Private
97	2891905100	GIRL SCOUTS SAN DIEGO-IMPERIAL COUNCIL INC			1231 UPAS ST	SAN DIEGO CA			92103	4720	BOULDER CREEK	RD	SEC 14-13-3E*PAR E PER DOC99-198423 IN\	6441068.868	1958537.168	Private
98	2902302200	MASTRO MARJORIE R&JIMMIE G 2007 TRUST			P O BOX 610	JULIAN CA			92036	6711	ENGINEERS	RD	SEC 25-13-3E*SEQ*(EX RD&DOC78-71330)DOC70-199812 IN\	6447892.026	1946929.71	Private
99	3331201700	WEFLEN TRUST 08-11-08			6842 ROLANDO KNOLLS DR	LA MESA CA			91942	0			SEC 14-14-3E*NWQ*NWQ OF SEQ OF\	6440021.454	1929061.794	Private
100	3331101400	DAELLENBACH ROBERT			3785 IBIS ST	SAN DIEGO CA			92103	0			SEC 15-14-3E*NW 1/4 OF*POR NE 1/4 OF*	6434898.456	1929890.494	Private
101	2901420100	AUMANN MARK P&APPLEMAN SHELAGH K			P O BOX 2216	JULIAN CA			92036	6276	ENGINEERS	RD	PAR 1*(EX ST)\	6445819.128	1948391.136	Private
102	3331210500	MILLER CHRISTOPHER G&SOMMERS MICHELE W	SOMMERS ROBERT S		9382 DECAMP DR	LA MESA CA			91942	0	BOULDER CREEK	RD	SEC 14-14-3E*SEQ*E H OF E H OF NEQ OF\	6443515.16	1927577.443	Private
103	2932120700	KIRKENDALL SANDRA J TRUST 01-05-98			4304 FALCON ST	SAN DIEGO CA			92103	5765	MOUNTAIN MEADOW		SEC 30-13-4E*NWQ*2.11AC PAR ROS7521 IN NEQ SEC25-13-3E&IN SWQ OF\	6448857.446	1949739.621	Private
104	3330610200	MCCOY CHARLES E TRUST 08-20-92			P O BOX 811	RAMONA CA			92065	0	BOULDER CREEK	RD	SEC 10-14-3E*NE 1/4*NE 1/4 OF*	6437819.757	1935270.111	Private
105	2900712400	SHELTON LIVING TRUST 12-29-04			8261 KAPLAN DR	SAN DIEGO CA			92123	5713	BOULDER CREEK	RD	SEC 24-13-3E*SWQ*D78-190953 IN E H OF SEQ SEC 23&IN W H OF\	6444378.822	1952582.996	Private
106	2902001500	DORAN CHARLES J TRUST 09-30-09			1556 KATELLA WAY	ESCONDIDO CA			92027	0	PENSTEMON	LN	PAR 4\	6443973.731	1943980.193	Private
107	2902200600	PEAT DONALD L&JOANNE M			12509 TAUNT RD	POWAY CA			92064	6036	MOUNTAIN MEADOW		SEC 30-13-4E*SWQ*(EX RD)DOC218802REC70 IN NWQ OF\	6449450.804	1947572.523	Private
108	2902100500	DECOL LAMONT R	BORJA JOSE M&BORJA ESTRELLA EST OF		314 JANE AVE	HOUMA LA			70363	5603	POCO MONTANA	RD	SEC 25-13-3E*E H*ELY PAR PER ROS 7568 IN\	6447277.106	1949028.64	Private
109	2900714100	SMITH DIANE LINDA TRUST 09-09-04			4967 MARIN DR	OCEANSIDE CA			92056	0	ENGINEERS	RD	SEC 24-13-3E*SWQ*THAT POR OF PAR D PER DOC95-165033 IN SEQ OF\	6445049.567	1952078.457	Private
110	3331210900	KOSTER ZOULIA M EST OF			P O BOX 655	DESCANSO CA			91916	0	BOULDER CREEK	RD	PAR 1\	6439854.468	1927472.722	Private
111	2900703000	GIRL SCOUTS SAN DIEGO-IMPERIAL COUNCIL INC			1231 UPAS ST	SAN DIEGO CA			92103	0	BOULDER CREEK	RD	SEC 23-13-3E*PAR D PER DOC99-198423 IN\	6441940.235	1954922.29	Private
112	2901412700	UNITED STATES OF AMERICA			PUBLIC AGENCY				0	0	BOULDER CREEK	RD	SEC 25-13-3E*SWQ*W H OF NWQ OF\	6443851.81	1948226.924	UNITED STATES OF AMERICA
113	2902301700	ANDREWS ROBERT C JR&CATHERINE A			13257 OLIVE MEADOWS DR	POWAY CA			92064	15809	STONEY	LANE	SEC 36-13-3E*NEQ*(EX DOCS69-122102&75-172488)DOC67-205137 IN\	6448546.194	1945759.543	Private
114	2900703800	UNITED STATES OF AMERICA FOREST SERVICE			PUBLIC AGENCY				0	0	EAGLE PEAK	RD	SEC 22-13-3E*SEQ*DOC02-1149405\	6437788.884	1952568.19	UNITED STATES OF AMERICA FOREST SERVICE
115	2900703400	VALENTINE L P			2244 S SANTA FE AVE #B2	VISTA CA			92084	0	EAGLE PEAK	RD	SEC 23-13-3E*NWQ*PAR C PER DOC99-198423 IN N H OF\	6439746.887	1956545.098	Private
116	3330700500	UNITED STATES OF AMERICA			PUBLIC AGENCY				0	0			SEC 11-14-3E*SW 1/4*SW 1/4 OF*	6439045.514	1931318.737	UNITED STATES OF AMERICA
117	3331210700	UNITED STATES OF AMERICA NATIONAL FOREST			PUBLIC AGENCY				0	0			SEC 14-14-3E*SWQ*W H OF\	6439038.103	1927330.969	UNITED STATES OF AMERICA NATIONAL FOREST
118	2900701600	GIRL SCOUTS SAN DIEGO-IMPERIAL COUNCIL INC			1231 UPAS ST	SAN DIEGO CA			92103	0			SEC 23-13-3E*SEQ*SWQ\	6441660.368	1952118.906	Private
119	2901414200	ELLIOTT LARRY W&VAUGHN JUDITH L			HCR 68-1073	VIAN, OK			74962	0	BOULDER CREEK	RD	SEC 26-13-3E*NEQ*DOC99-755113 IN W H OF NWQ SEC 15&IN E H OF\	6444392.48	1950311.211	Private
120	2902100800	HEIER TRUST 10-28-05			822 ST GEORGE DR	EL CAJON CA			92019	5745	POCO MONTANA	RD	SEC 25-13-3E*NEQ*NE PAR OF SW2PARS OF NW3PARS ROS7544 IN SWQ OF\	6446896.2	1949285.241	Private
121	2891800100	MARTINEZ AUGUSTINE D&CAROL L			P O BOX 158	JULIAN CA			92036	0	EAGLE PEAK	RD	SEC 15-13-3E*NW 1/4*	6434422.821	1960738.199	Private
122	2902101000	HOULE FAMILY TRUST 01-05-06			3722 MT ALADIN AVE	SAN DIEGO CA			92111	5826	POCO MONTANA	RD	SEC 25-13-3E*NEQ*NWLY PAR PER ROS 7545 IN SWQ OF\	6447003.117	1949915.131	Private
123	2932120200	LEONARD RANDALL S&MICHELLE V			P O BOX 1222	JULIAN CA			92036	5949	MOUNTAIN MEADOW		SEC 30-13-4E*W H*2.50 AC PAR PER ROS 7467 IN W H OF\	6449057.945	1948713.813	Private
124	2900703300	GIRL SCOUTS SAN DIEGO-IMPERIAL COUNCIL INC			1231 UPAS ST	SAN DIEGO CA			92103	0	EAGLE PEAK	RD	SEC 23-13-3E*NWQ*PAR D PER DOC99-198423 IN N H OF\	6439997.203	1956457.688	Private
125	2902101400	EDMONDS FAMILY TRUST 08-05-10			6715 MINERAL DR	SAN DIEGO CA			92119	5909	FOREST MEADOW	RD	SEC 25-13-3E*NEQ*SLY PAR PER ROS 7502 IN NEQ OF SEQ&IN SEQ OF\	6447644.821	1949056.036	Private
126	2901413700	LYON J MICHAEL&ANGELA REVOCABLE TRUST 12-02-98			PMB 105	665 SAN RODOLFO DR #124	SOLANA BEACH CA		92075	0	BOULDER CREEK	RD	PAR 3*THAT POR OF PAR C PER DOC95-165033 IN PAR 4&IN\	6444525.321	1951433.932	Private
127	2901411800	DONOGHUE DANIEL&NANCY TRUST 06-05-97			667 HOSKA DR	DEL MAR CA			92014	6838	ENGINEER	RD	SEC 36-13-3E*N H*PAR 1 PER DOC88-123002 IN SEC 25&IN\	6445067.384	1946538.496	Private
128	2900714000	SMITH DIANE LINDA TRUST 09-09-04			4967 MARIN DR	OCEANSIDE CA			92056	0	BOULDER CREEK	RD	PAR 3*THAT POR OF PAR D PER DOC95-165033 IN PAR 2&4&IN\	6444483.652	1951767.314	Private
129	2900502600	UNITED STATES OF AMERICA			PUBLIC AGENCY				0	0	EAGLE PEAK	RD	SEC 22-13-3E*NEQ*ALL LY NLY OF RD IN N H OF\	6436864.127	1956052.687	UNITED STATES OF AMERICA
130	3331001100	UNITED STATES OF AMERICA NATIONAL FOREST			PUBLIC AGENCY				0	0			SEC 15-14-3E*S H\	6435742.176	1927323.105	UNITED STATES OF AMERICA NATIONAL FOREST
131	2902201200	HOWARTH BRIAN&VALERIE			P O BOX 1227	JULIAN CA			92036	6647	ENGINEERS	RD	SEC 25-13-3E*SEQ*3.06 AC PAR PER ROS 7564 IN NEQ OF\	6448435.349	1947672.082	Private
132	2901411300	UNITED STATES OF AMERICA NATIONAL FOREST			PUBLIC AGENCY				0	0			SEC 26-13-3E*SEQ*SEQ OF\	6443053.785	1946879.913	UNITED STATES OF AMERICA NATIONAL FOREST
133	2901413900	LARIMER FAMILY TRUST 07-10-95			12492 WINTER GARDENS DR	LAKESIDE CA			92040	0	BOULDER CREEK	RD	SEC 25-13-3E*PAR B OF D95-165038 IN PM12199&IN SEC 26-13-3E&IN\	6443637.915	1950588.953	Private

134	2902302500	POLESE FRANK J&JILL A			1185 NOVARA ST	SAN DIEGO CA			92107	6911	ENGINEERS	RD	SEC 36-13-3E*NEQ*(EX RD)D78-558174 IN SEQ OF SEQ SEC25&IN NEQ OF\	6447992.142	1945879.505	Private
135	3330301400	UNITED STATES OF AMERICA			PUBLIC AGENCY				0	0	BOULDER CREEK	RD	SEC 3-14-3E*SEQ*(EX DOC96-487743)NEQ OF\	6437499.678	1937449.283	UNITED STATES OF AMERICA
136	2902201800	CLARK FAMILY 1994 TRUST 02-25-84	ADAMS RUBY L		12697 SHAYANN LN	LAKESIDE CA			92040	6635	ENGINEERS	RD	SEC 25-13-3E*SEQ*SLY PAR PER ROS 7532 IN\	6447974.455	1947593.442	Private
137	2932120600	CLEMMONS ORVILLE W			650 TAMARACK DR	UNION CITY CA			94587	5869	MOUNTAIN MEADOW		SEC 30-13-4E*NWQ*2.91 AC PAR PER ROS 7521 IN SWQ OF\	6449338.697	1949624.022	Private
138	3330501400	UNITED STATES OF AMERICA NATIONAL FOREST			PUBLIC AGENCY				0	0			SEC 10-14-3E*W Q*143.69 AC M/L IN E H OF SEC 9&IN\	6431865.852	1934229.762	UNITED STATES OF AMERICA NATIONAL FOREST
139	2891905200	GIRL SCOUTS SAN DIEGO-IMPERIAL COUNCIL INC			1231 UPAS ST	SAN DIEGO CA			92103	4720	BOULDER CREEK	RD	SEC 14-13-3E*S H*PAR D PER DOC99-198423 IN\	6441875.931	1957357.707	Private
140	2900810300	EXECUTIVE RETREATS L L C			P O BOX 1222	BONITA CA			91908	0	BOULDER CREEK	RD	SEC 24-13-3E*SE 1/4*W 1/2 OF*	6446853.204	1952795.581	Private
141	2900713900	D&P MANAGEMENT CO L L C			1943 FRIENDSHIP DR #B	EL CAJON CA			92020	0	BOULDER CREEK	RD	PAR 3*PAR B PER DOC95-026886 IN SEC 25&SEC 26-13-3E&IN\	6442906.853	1951355.44	Private
142	2902201600	HOWARTH BRIAN&VALERIE J			P O BOX 1227	JULIAN CA			92036	0	ENGINEERS	RD	SEC 25-13-3E*SEQ*SW 1.00AC PAR OF NELY 2 1.00AC PARS ROS 7490 IN\	6448287.738	1947886.471	Private
143	2891910600	PAYNE THOMAS G&MARY C TRUST 09-10-82			29 LAGUNITA DR	LAGUNA BEACH CA			92651	4663	EAGLE PEAK	RD	PAR 2*(EX ST)\	6441730.203	1959408.704	Private
144	2902001800	BAGGERLY LEO L&CAROLE A			550 ORPHEUS AVE	LEUCADIA CA			92024	0	PENSTEMON	RD	PAR 3\	6447156.707	1943978.987	Private
145	3331000700	UNITED STATES OF AMERICA			PUBLIC AGENCY				0	0	BOULDER CREEK	RD	SEC 15-14-3E*NE 1/4*NE 1/4 OF*	6437741.739	1930049.29	UNITED STATES OF AMERICA
146	2891801000	TOWBIN DANIEL&CAROL L FAMILY TRUST 11-01-92			5550 W SAHARA AVE	LAS VEGAS NV			89146	0	EAGLE PEAK	RD	SEC 15-13-3E*E H*105.82 AC M/L IN E H OF\	6437751.636	1960078.251	Private
147	3331000100	UNITED STATES OF AMERICA			PUBLIC AGENCY				0	0	BOULDER CREEK	RD	SEC 15-14-3E*POR\	6434452.627	1930322.34	UNITED STATES OF AMERICA
148	2891910500	NETH ROBERT A&NADINE L			4695 EAGLE PEAK RD	P O BOX 1531	JULIAN CA		92036	4695	EAGLE PEAK	RD	PAR 1*(EX ST)\	6441477.694	1959104.496	Private
149	2900704600	UNITED STATES OF AMERICA DEPARTMENT OF AGRICULTURE			PUBLIC AGENCY				0	0	EAGLE PEAK	RD	SEC 23-13-3E*W H*DOC03-472522 IN\	6440345.253	1953883.197	UNITED STATES OF AMERICA DEPARTMENT OF AGRICULTURE
150	2900503100	UNITED STATES OF AMERICA			PUBLIC AGENCY				0	0	EAGLE PEAK	RD	SEC 22-13-3E*PAR 12 PER DOC99-665953 IN\	6434352.558	1954564.083	UNITED STATES OF AMERICA
151	2900704100	UNITED STATES OF AMERICA			PUBLIC AGENCY				0	0	EAGLE PEAK	RD	SEC 22-13-3E*E H*DOC03-107817 IN W H OF SEC 23-13-3E&IN\	6437814.403	1954744.337	UNITED STATES OF AMERICA
152	2902202200	PENNIX FAMILY TRUST 05-22-02	PENIX SHERRY B 1989 TRUST		1143 OLD CHASE AVE	EL CAJON CA			92020	0	ENGINEERS	RD	SEC 25-13-3E*SEQ*(EX D75-363275&79-216109)D70-125042 IN SEQ OF\	6448571.816	1947258.13	Private
153	3331201600	ROWSON BRYAN L&CHRISTINE A			P O BOX 574	DESCANSO CA			91916	13895	BOULDER CREEK	RD	SEC 14-14-3E*NWQ*SWQ OF SEQ OF\	6440032.37	1928403.436	Private
154	2902300500	LEAMONS FAMILY TRUST 07-15-96			2368 LAWTON DR	LEMON GROVE CA			91945	15882	STONEY	LANE	SEC 25-13-3E*SEQ*(EX RS 531)DOC107646REC71 IN SEQ OF\	6448420.701	1946517.019	Private
155	2902102900	CASTRO DANIEL S			P O BOX 632803	SAN DIEGO CA			92163	5774	POCO MONTANA		SEC 25-13-3E*NEQ*NELY PAR PER ROS 7570 IN SWQ OF\	6446660.008	1949793.403	Private
156	2940604000	STATE OF CALIFORNIA			PUBLIC AGENCY				0	0			SEC 31-13-4E*LOTS 1&2&7&8&E H OF NWQ OF\	6450202.324	1944733.759	Private
157	2932120400	WAAYERS GARY M&ROBYN J			5893 MT MEADOWS RD	JULIAN CA			92036	5893	MT MEADOWS	RD	SEC 30-13-4E*NWQ*2.76 AC PAR PER ROS 7467 IN SWQ OF\	6449145.509	1949204.015	Private
158	3330300800	UNITED STATES OF AMERICA			PUBLIC AGENCY				0	0	BOULDER CREEK	RD	SEC 3-14-3E*NEQ*S H OF\	6437136.632	1939035.843	UNITED STATES OF AMERICA
159	3330600800	UNITED STATES OF AMERICA			PUBLIC AGENCY				0	0	BOULDER CREEK	RD	SEC 10-14-3E*SW 1/4*POR SE 1/4 OF*	6435121.038	1930658.817	UNITED STATES OF AMERICA
160	2900500900	UNITED STATES OF AMERICA			PUBLIC AGENCY				0	0	EAGLE PEAK	RD	SEC 22-13-3E*NW 1/4 OF*NW 1/4 OF*	6433781.176	1956066.464	UNITED STATES OF AMERICA
161	2902202100	PENNIX FAMILY TRUST 05-22-02	PENIX SHERRY B 1989 TRUST		1143 OLD CHASE AVE	EL CAJON CA			92020	0	ENGINEERS	RD	SEC 25-13-3E*SEQ*(EX RD&D79-216109)DOC75-363275 IN NEQ OF\	6448676.351	1947467.586	Private
162	2902102600	EISELE ROBERT W&BARBARA M			9719 LUTHERAN WAY	SANTEE CA			92071	5629	FOREST MEADOW	RD	SEC 25-13-3E*NEQ*2.61 AC PAR PER ROS 7657 IN\	6448418.805	1949008.267	Private
163	3331201200	STULTS MAX M&ALMA S TRS			P O BOX 515	DESCANSO CA			91916	13775	BOULDER CREEK	RD	SEC 14-14-3E*NWQ*SEQ OF SEQ OF\	6440701.151	1928419.893	Private
164	3331300200	UNITED STATES OF AMERICA NATIONAL FOREST			PUBLIC AGENCY				0	0			SEC 13-14-3E*S H*N H&(EX NWQ OF SWQ)\	6446254.731	1928821.796	UNITED STATES OF AMERICA NATIONAL FOREST
165	3331101600	DANIELS JOHN S M EST OF	DANIELS ALBERT W EST OF	HARPER RUTH F EST OF ET AL	2435 33RD ST	SAN DIEGO CA			92104	0	BOULDER CREEK	RD	SEC 15-14-3E*NW 1/4 OF*POR NE 1/4 OF*	6434952.665	1929538.771	Private
166	2900710100	ARISMAN BRYAN C			15234 WILLOW RD	LAKESIDE CA			92040	0	BOULDER CREEK	RD	PAR 1\	6443133.155	1953575.198	Private
167	2900704300	UNITED STATES OF AMERICA			PUBLIC AGENCY				0	0	EAGLE PEAK	RD	SEC 23-13-3E*NWQ*(EX THAT POR OF D03-084358)DOC03-107819 IN\	6439271.572	1955578.293	UNITED STATES OF AMERICA
168	2902101900	CARTER WILLIAM L&SUSAN A			7088 FOREST MEADOW WAY	JULIAN CA			92036	7088	FOREST MEADOW	WAY	SEC 25-13-3E*NEQ*NELY PAR PER ROS 7522 IN SEQ OF\	6448568.684	1949749.519	Private
169	2900703200	VALENTINE L P			2244 S SANTA FE AVE #B2	VISTA CA			92084	0	EAGLE PEAK	RD	SEC 23-13-3E*NWQ*PAR B PER DOC99-198423 IN NEQ OF\	6439745.85	1956352.587	Private
170	2902200200	CRANE ANN C REVOCABLE LIVING 1997 TRUST			P O BOX 1720	JULIAN CA			92036	7068	SANDY CREEK		SEC 25-13-3E*SEQ*5.61 AC PAR PER ROS 7533 IN NEQ OF\	6448464.251	1948396.514	Private
171	2930103200	PECKHAM FAMILY TRUST 01-28-93			401 W A ST #2300	SAN DIEGO CA			92101	0	FRISIUS	DR	SEC 24-13-3E*E H*POR OF PAR D OF DOC02-696122 IN\	6448309.82	1952478.661	Private
172	3331211000	MILLER GREGG&LINDA LIVING TRUST			P O BOX 394	DESCANSO CA			91916	31675	TULE SPRINGS	RD	PAR 2\	6440247.111	1927482.066	Private
173	2900703100	VALENTINE L P			2244 S SANTA FE AVE #B2	VISTA CA			92084	0	EAGLE PEAK	RD	SEC 23-13-3E*NWQ*PAR B PER DOC99-198423 IN N H OF\	6439585.813	1956400.3	Private
174	2902100200	ROMERO 2006 TRUST 07-18-06			10260 FUERTE DR	LA MESA CA			91941	5672	POCO MONTANA	RD	SEC 25-13-3E*NEQ*WLY PAR PER ROS 7568 IN SWQ OF\	6446358.326	1948970.447	Private
175	2900704400	UNITED STATES OF AMERICA			PUBLIC AGENCY				0	0	EAGLE PEAK	RD	SEC 23-13-3E*W H*DOC03-107818 IN E H OF SEC 22-13-3E&IN\	6439144.307	1954407.981	UNITED STATES OF AMERICA
176	2902102700	BARNES JOHN W&KATHLEEN P			322 LUSTROSOS ST	OCEANSIDE CA			92057	5685	FOREST MEADOW	RD	SEC 25-13-3E*E H*2.52 AC PAR PER ROS 7657 IN E H OF\	6448387.964	1948703.743	Private
177	2901412100	MCCULLEY J MICHAEL&KAREN S TRUST 09-02-08			11828 LAKESIDE AVE	LAKESIDE CA			92040	0	ENGINEERS	RD	SEC 36-13-3E*NEQ*PAR 4 PER DOC88-123002 IN SEC 25 IN SEQ&IN\	6447160.988	1946456.367	Private
178	2902103200	SEBASTIAN HIPOLITO D JR&PRISCILLA P			P O BOX 1934	CHULA VISTA CA			91912	5690	POCO MONTANA	RD	SEC 25-13-3E*NEQ*SLY PAR PER ROS 7570 IN SWQ OF\	6446313.914	1949292.314	Private
179	3331101500	DANIELS JOHN S M EST OF	DANIELS ALBERT W EST OF	HARPER RUTH F EST OF ET AL	2435 33RD ST	SAN DIEGO CA			92104	0			SEC 15-14-3E*NW 1/4 OF*POR NE 1/4 OF*	6434937.815	1929582.964	Private

180	3330301600	UNITED STATES OF AMERICA				PUBLIC AGENCY			0	0	BOULDER CREEK	RD	SEC 3-14-3E*SEQ*DOC96-487743 IN\	6438199.91	1937812.334	UNITED STATES OF AMERICA
181	3331211100	REEDY PATRICIA S				P O BOX 392	JULIAN CA		92036	13838	BOULDER CREEK	RD	PAR 3\	6440715.673	1927494.295	Private
182	3330301100	UNITED STATES OF AMERICA				PUBLIC AGENCY			0	0	BOULDER CREEK	RD	SEC 3-14-3E*NWQ*(EX HWY)S H OF\	6434510.562	1938814.572	UNITED STATES OF AMERICA
183	3331102000	PALMER FAMILY TRUST				9498 DOHENY RD	SANTEE CA		92071	0	BOULDER CREEK	RD	SEC 15-14-3E*NW 1/4 OF*POR*	6435380.229	1929314.849	Private
184	2902010100	UNITED STATES OF AMERICA(INAJA AND COSMIT INDIAN RESERVATION)				PUBLIC AGENCY			0	0			SEC 35-13-3E*LOTS 1 THRU 7\	6440657.201	1945025.815	UNITED STATES OF AMERICA(INAJA AND COSMIT INDIAN RESERVATION)
185	2902001400	A&M TRUST 07-19-99				6340 CASCADE ST	SAN DIEGO CA		92122	0	PENSTEMON	LN	PAR 3\	6444781.416	1943984.343	Private
186	2891904900	VALENTINE L P				2244 S SANTA FE AVE #B2	VISTA CA		92084	0	EAGLE PEAK	RD	SEC 14-13-3E*SWQ*PAR C PER DOC99-198423 IN N H OF\	6439013.615	1957943.155	Private
187	2900504000	RUTHERFORD STEPHEN P	REUTTER JULIA A			425 W GRAND AVE	ESCONDIDO CA		92025	0	EAGLE PEAK	RD	SEC 22-13-3E*NEQ*2.29 AC M/L IN SEQ OF\	6437176.369	1954963.039	Private
188	2891904200	VALENTINE L P				2244 S SANTA FE AVE #B2	VISTA CA		92084	0	EAGLE PEAK	RD	SEC 14-13-3E*SWQ*PAR C PER DOC99-198423 IN S H OF\	6439231.614	1957422.253	Private
189	2891903800	VALENTINE L P				2244 S SANTA FE AVE #B2	VISTA CA		92084	0	EAGLE PEAK	RD	SEC 14-13-3E*SWQ*PAR B PER DOC99-198423 IN SEQ OF\	6440024.856	1956581.385	Private
190	2900503900	RUTHERFORD STEPHEN P	REUTTER JULIA A			425 W GRAND AVE	ESCONDIDO CA		92025	0	EAGLE PEAK	RD	SEC 22-13-3E*N H*72.41 AC M/L IN NWQ OF SWQ&IN S H OF\	6436452.611	1954542.767	Private
191	2901410100	SUN COAST HOMES PENSION TRUST				1943 FRIENDSHIP DR #B	EL CAJON CA		92020	0	ENGINEERS	RD	SEC 25-13-3E*NW 1/4 OF*NE 1/4 OF*	6445546.683	1950731.79	Private
192	2891801500	MARTINEZ FRANK S	MARTINEZ AUGUSTINE D			P O BOX 2374	JULIAN CA		92036	0	EAGLE PEAK	RD	SEC 15-13-3E*S H*PAR 1 PER DOC99-700036 IN\	6435383.089	1958544.142	Private
193	3331000800	DYER ALEC S	MARKS GARY JR	MARKS ROBERT		C/O STEVEN T DYER	13347 RUSSET LEAF LN	SAN DIEGO CA	92129	0	BOULDER CREEK	RD	SEC 15-14-3E*NW 1/4 OF*POR*	6434586.61	1930626.99	Private
194	3330300500	UNITED STATES OF AMERICA NATIONAL FOREST				PUBLIC AGENCY			0	0			SEC 3-14-3E*LOTS 1 THRU 4\	6435815.5	1940374.762	UNITED STATES OF AMERICA NATIONAL FOREST
195	2902100700	BULLEY WILLIAM&SHEILA FAMILY DECEDENTS TRUST 02-18-89				10560 ROOKWOOD DR	SAN DIEGO CA		92131	5669	POCO MONTANA	RD	SEC 25-13-3E*NEQ*SWLY PAR OF NWLY 3 PARS PER ROS 7544 IN SWQ OF\	6446634.015	1949211.057	Private
196	2900801800	WALLACH JOEL&LAN MA FAMILY TRUST 01-02-96				P O BOX 1222	BONITA CA		91908	0	BOULDER CREEK	RD	SEC 24-13-3E*N H*40.79AC PAR PER ROS7573 IN S H OF\	6447626.128	1954322.581	Private
197	2900503800	RUTHERFORD STEPHEN P	REUTTER JULIA A			425 W GRAND AVE	ESCONDIDO CA		92025	0	EAGLE PEAK	RD	SEC 22-13-3E*NEQ*1.60 AC M/L IN N H OF\	6437136.002	1955376.811	Private
198	3330300200	FRIZZELL BEESON FAMILY TRUST 06-23-10	FRIZZELL BETTY L&ENGELBRECHT STEPHANIE			11435 ROCKY LN	LAKESIDE CA		92040	0	BOULDER CREEK	RD	SEC 3-14-3E*SE 1/4*POR SW 1/4 OF*	6436931.224	1935986.887	Private
199	2902201100	MASTRO MARJORIE R&JIMMIE G 2007 TRUST				P O BOX 610	JULIAN CA		92036	6645	ENGINEERS	RD	SEC 25-13-3E*SEQ*(EX RS531)SLY PAR PER ROS 7564 IN E H OF\	6447834.754	1947147.638	Private
200	2891801900	UNITED STATES OF AMERICA				PUBLIC AGENCY			0	0	BOULDER CREEK	RD	SEC 22-13-3E*NWQ*PAR 2 PER DOC99-665953 IN S H SEC 15&IN NEQ OF\	6435087.331	1956799.388	UNITED STATES OF AMERICA
201	3331210400	MATZEN WILLIAM C&TAMI S TRS				2156 EUCLID AVE	EL CAJON CA		92019	0	BOULDER CREEK	RD	SEC 14-14-3E*SEQ*WLY 10.00AC PAR PER ROS7582 IN E H OF NEQ OF\	6443173.833	1927567.45	Private
202	3331000600	UNITED STATES OF AMERICA				PUBLIC AGENCY			0	0	BOULDER CREEK	RD	SEC 15-14-3E*NE 1/4*S 1/2 OF NE 1/4 & NW 1/4 OF*	6437081.04	1928811.803	UNITED STATES OF AMERICA
203	2901800400	MILLER LAURENCE A	MILLER ALICE K	MILLER DAVID M&ALICE K TRUST 12-05-88		2329 PINE ST	SAN DIEGO CA		92103	0	BOULDER CREEK	RD	SEC 34-13-3E*SW 1/4 OF*SE 1/4 OF NE 1/4 & SE 1/4 & SE 1/4 OF*	6437138.771	1943218.022	Private
204	2902000800	DONOGHUE DANIEL&NANCY FAMILY TRUST 06-05-97				667 HOSKA DR	DEL MAR CA		92014	0	ENGINEERS	RD	SEC 36-13-3E*N H*PAR 3 PER DOC77-378656 IN\	6444805.405	1944985.619	Private
205	2901414500	UNITED STATES OF AMERICA				PUBLIC AGENCY			0	0	BOULDER CREEK	RD	SEC 26-13-3E*NEQ*PAR 16 PER DOC99-665953 IN NEQ OF SEQ&E H OF\	6442886.559	1949168.165	UNITED STATES OF AMERICA
206	3331101900	ELLIS GEORGE M JR				917 ISRAEL CREEK CT	KNOXVILLE MD		21758	0			SEC 15-14-3E*NW 1/4 OF*POR*	6434963.736	1929489.801	Private
207	2900702800	UNITED STATES OF AMERICA				PUBLIC AGENCY			0	0	EAGLE PEAK	RD	SEC 23-13-3E*NWQ*11.07 AC M/L IN NWQ OF\	6438678.128	1956147.219	UNITED STATES OF AMERICA
208	2902102200	SCAVO FRANK J				5960 FOREST MEADOW RD	JULIAN CA		92036	5914	FOREST MEADOW	RD	SEC 25-13-3E*NEQ*2.54 AC PAR PER ROS 7533 IN SEQ OF\	6447874.798	1949129.197	Private
209	2900703900	UNITED STATES OF AMERICA FOREST SERVICE				PUBLIC AGENCY			0	0	EAGLE PEAK	RD	SEC 23-13-3E*SWQ*DOC02-1149406 IN SEQ OF SEC 22&NWQ&\	6439007.024	1953520.475	UNITED STATES OF AMERICA FOREST SERVICE
210	2900704500	UNITED STATES OF AMERICA DEPARTMENT OF AGRICULTURE				PUBLIC AGENCY			0	0	EAGLE PEAK	RD	SEC 23-13-3E*NWQ*DOC03-472521 IN S H OF\	6440375.528	1954902.488	UNITED STATES OF AMERICA DEPARTMENT OF AGRICULTURE
211	2902200300	KLINK BRIAN D	DODDS CAROL J			9464 TELKAIF ST	LAKESIDE CA		92040	7109	SANDY CREEK		SEC 25-13-3E*SEQ*NLY PAR PER ROS 7518 IN NEQ OF\	6448655.976	1948083.866	Private
212	2902101100	CONTRERAS LISA P				309 S MAPLE ST	ESCONDIDO CA		92025	5848	POCO MONTANA	RD	SEC 25-13-3E*NEQ*SELY PAR OF NWLY 2 PARS PER ROS 7545 IN SWQ OF\	6447359.016	1949780.12	Private
213	2902302400	PINTER JERALD F&DEBORAH F				3001 GARBOSO ST	CARLSBAD CA		92009	6146	GOLD DUST		SEC 25-13-3E*SEQ*(EX RD&D70-199812&D78-558174)DOC69-124672 IN\	6448035.81	1946475.097	Private
214	2901411500	UNITED STATES OF AMERICA(INAJA AND COSMIT INDIAN RESERVATION)				PUBLIC AGENCY			0	0			SEC 25-13-3E*NEQ*N H OF\	6447507.246	1950706.019	UNITED STATES OF AMERICA(INAJA AND COSMIT INDIAN RESERVATION)
215	2891905000	TOWBIN DANIEL&CAROL L FAMILY TRUST 11-01-92				5550 W SAHARA AVE	LAS VEGAS NV		89146	0	EAGLE PEAK	RD	SEC 14-13-3E*SWQ*PAR A PER DOC99-198423 IN N H OF\	6439076.112	1958612.283	Private
216	3330700800	UNITED STATES OF AMERICA NATIONAL FOREST				PUBLIC AGENCY			0	0			SEC 11-14-3E*N H*280.00 AC M/L IN S H&IN\	6441673.801	1933565.87	UNITED STATES OF AMERICA NATIONAL FOREST
217	3330400700	UNITED STATES OF AMERICA NATIONAL FOREST				PUBLIC AGENCY			0	0			SEC 1-14-3E\	6446213.621	1938431.284	UNITED STATES OF AMERICA NATIONAL FOREST

218	2902302100	LUTZ MARVIN D&IDA L			7710 PARKDALE PL	SAN DIEGO CA			92126	15889	STONEY	LANE	SEC 30-13-4E*PAR C PER DOC77-19977 IN SEC 25-13-3E&IN\	6448793.553	1946489.61	Private
219	2901411200	UNITED STATES OF AMERICA			PUBLIC AGENCY				0	0			SEC 26-13-2E*NEQ*1.00 AC M/L IN SEQ OF\	6443501.262	1949335.26	UNITED STATES OF AMERICA
220	2902002400	DEHAAN HANS A TRUST 03-01-03			12914 CRISTALLO PL	SAN DIEGO CA			92130	0	PENSTEMON	RD	PAR 2*PAR 1B PER DOC02-504928 IN PAR 1&ALL OF\	6446802.65	1942772.25	Private
221	2900704000	RUTHERFORD STEPHEN P	REUTTER JULIA A		425 W GRAND AVE	ESCONDIDO CA			92025	0	EAGLE PEAK	RD	SEC 22-13-3E*SEQ*42.50 AC M/L IN N H OF\	6436680.363	1953482.811	Private
222	2902102800	SCHNEIDER KURT			P O BOX 3065	LA MESA CA			91944	5672	FOREST MEADOW	RD	SEC 25-13-3E*E H*2.68 AC PAR PER ROS 7657 IN E H OF\	6448704.56	1948867.324	Private
223	2900800700	GIRL SCOUTS SAN DIEGO-IMPERIAL COUNCIL INC			1231 UPAS ST	SAN DIEGO CA			92103	0	BOULDER CREEK	RD	SEC 24-13-3E*N 1/2 OF SW 1/4 OF NW 1/4 & NW 1/4 OF NW 1/4 IN*	6444299.118	1955791.102	Private
224	2902100900	NAPIER JAMES&SUSAN FAMILY TRUST 03-01-01			4333 CARTULINA RD	SAN DIEGO CA			92124	5791	POCO MONTANA	RD	SEC 25-13-3E*NEQ*NELY PAR PER ROS 7544 IN SWQ OF\	6446928.419	1949637.015	Private
225	2891904800	VALENTINE L P			2244 S SANTA FE AVE #B2	VISTA CA			92084	0	EAGLE PEAK	RD	SEC 15-13-3E*SEQ*PAR B PER DOC99-198423 IN N H OF SWQ SEC14&NEQ\	6438084.597	1958012.483	Private
226	3331211200	SINGSON EDISON P			6358 PLAZA CUERNAVACA	SAN DIEGO CA			92114	13826	TULE SPRINGS TRUCK	TRL	PAR 4\	6441636.638	1927524.611	Private
227	2900503300	RUTHERFORD STEPHEN P	REUTTER JULIA A		425 W GRAND AVE	ESCONDIDO CA			92025	0	EAGLE PEAK	RD	SEC 22-13-3E*SWQ*113.80 AC M/L IN\	6434534.819	1952260.745	Private
228	2902102000	SILVERMAN-FEDORKA FAMILY TRUST			2111 WALES DR	CARDIFF CA			92007	5617	FOREST MEADOW	RD	SEC 25-13-3E*NEQ*SELY PAR PER ROS 7522 IN SEQ OF\	6448504.916	1949417.732	Private
229	2902010400	HANSON WILLARD E TRUST 12-01-99	HANSON LINDA E TRUST 12-01-99		P O BOX 1644	LA JOLLA CA			92038	0			SEC 36-13-3E*S 1/4*E 3/4 OF*	6446843.353	1941528.031	Private
230	2901411100	UNITED STATES OF AMERICA			PUBLIC AGENCY				0	17158	BOULDER CREEK	RD	SEC 26-13-2E*NEQ*1.00 AC M/L IN SEQ OF\	6443500.944	1949603.605	UNITED STATES OF AMERICA
231	2902002500	DEHAAN HANS A TRUST 03-01-03			12914 CRISTALLO PL	SAN DIEGO CA			92130	0	PENSTEMON	RD	PAR 4*PAR 3&\	6445357.642	1943226.485	Private
232	2902202300	SOUTHCOTT FAMILY TRUST 05-04-10			P O BOX 1059	JULIAN CA			92036	6779	ENGINEERS	RD	SEC 25-13-3E*SEQ*DOC79-216109 IN\	6448281.732	1947213.514	Private
233	2932120100	LEONARD RANDALL S&MICHELLE V			P O BOX 1222	JULIAN CA			92036	7192	SANDY CRK		SEC 30-13-4E*W H*3.95 AC PAR PER ROS 7467 IN W H OF\	6449092.33	1948457.889	Private
234	3331100100	KRYCH MITHCELL P&JEANNETTE M REVOCABLE LIVING TRUST 10-24-07			3601 LAKE MARY RD #384	FLAGSTAFF AZ			86001	0	BOULDER CREEK	RD	SEC 15-14-3E*NW 1/4*POR*	6434385.623	1930071.563	Private
235	3331100300	FEATHERSTONE CHARLES EST OF			C/O JODI J SOUTHER	4889 OAK ST	CARSON CITY NV		89701	0			SEC 15-14-3E*POR\	6434550.281	1930053.238	Private
236	2900704200	RUTHERFORD STEPHEN P	REUTTER JULIA A		425 W GRAND AVE	ESCONDIDO CA			92025	0	EAGLE PEAK	RD	SEC 23-13-3E*NWQ*0.67 AC M/L IN NWQ OF\	6439614.856	1956242.277	Private
237	2902101800	CARTER WILLIAM L&SUSAN A			7088 FOREST MEADOW WAY	JULIAN CA			92036	7070	FOREST MEADOW	WAY	SEC 25-13-3E*NEQ*NWLY PAR PER ROS 7522 IN SEQ OF\	6448288.518	1949779.499	Private
238	2902101200	CONTRERAS LISA P			309 S MAPLE ST	ESCONDIDO CA			92025	5882	POCO MONTANA	RD	SEC 25-13-3E*NEQ*NLY PAR OF SLY 2 PARS PER ROS 7545 IN SWQ OF\	6447276.546	1949538.881	Private
239	2902101600	FLEMING GLEN B			1839 OAK HILL DR	ESCONDIDO CA			92027	7010	FOREST MEADOW	WAY	SEC 25-13-3E*NEQ*2.61 AC PAR PER ROS 7502 IN SEQ OF\	6447679.459	1949858.438	Private
240	2902201300	HENDRICKSON WILLIAM&DEBORAH FAMILY 2003 TRUST 07-02-03			17315 CRISSEY RD N	SMITH RIVER CA			95567	0			SEC 25-13-3E*SEQ*SLY PAR OF NLY 3 PARS PER ROS 7518 IN NEQ OF\	6448650.793	1947828.796	Private
241	3331201800	WEFLEN NATHAN E			6842 ROLANDO KNOLLS DR	LA MESA CA			91942	13725	BOULDER CREEK	RD	SEC 14-14-3E*NWQ*NEQ OF SEQ OF\	6440687.076	1929081.71	Private
242	2891800600	GREIG JOSEPH E JR			P O BOX 64	JULIAN CA			92036	0	EAGLE PEAK	RD	SEC 15-13-3E*NEQ*SWQ OF\	6436401.153	1959998.485	Private
243	2901420200	BUSALACCHI MARIANO F&ANGELINE M			6162 ENGINEERS RD	JULIAN CA			92036	6162	ENGINEERS	RD	PAR 2*(EX ST)\	6445607.336	1948700.828	Private
244	2902201900	CHILDS TERRI D 1998 TRUST 01-20-98			P O BOX 2127	JULIAN CA			92036	7065	SANDY CREEK		SEC 25-13-3E*SEQ*NLY PAR PER ROS 7532 IN\	6448032.708	1948006.34	Private
245	2902201400	RUNYON ANNA M			708 NOLAN AVE	CHULA VISTA CA			91910	0			SEC 25-13-3E*SEQ*1.03 AC PAR PER ROS 7518 IN NEQ OF\	6448643.051	1947954.85	Private
246	2901414000	WHITTAKER JOHN M&RACHEL E			22251 HAZEL CRST	MISSION VIEJO CA			92692	0	ENGINEERS	RD	SEC 25-13-3E*NWQ*DOC99-755112 IN W H OF\	6444522.564	1949647.391	Private
247	2891910700	LEATH BRECK A&BARBARA J			P O BOX 175	SANTA YSABEL CA			92070	4651	EAGLE PEAK	RD	PAR 3*(EX ST)\	6442162.985	1959299.093	Private
248	2901414400	UNITED STATES OF AMERICA			PUBLIC AGENCY				0	0	BOULDER CREEK	RD	SEC 25-13-3E*NWQ*PAR 15 PER DOC99-665953 IN SWQ&IN\	6444380.627	1948928.837	UNITED STATES OF AMERICA
249	3331200500	UNITED STATES OF AMERICA			PUBLIC AGENCY				0	0			SEC 14-14-3E*NWQ*W H OF\	6439040.609	1929475.704	UNITED STATES OF AMERICA
250	2902102300	SCAVO FRANK J			5960 FOREST MEADOW RD	JULIAN CA			92036	5960	FOREST MEADOW	RD	SEC 25-13-3E*NEQ*2.56 AC PAR PER ROS 7533 IN SEQ OF\	6447844.76	1948876.575	Private
251	2902202000	PENNIX FAMILY TRUST 05-22-02	PENIX SHERRY B 1989 TRUST		1143 OLD CHASE AVE	EL CAJON CA			92020	7019	ENGINEERS	RD	SEC 25-13-3E*SEQ*(EX D75-363275&79-216109)D70-125042 IN NEQ OF\	6448589.531	1947593.894	Private
252	2902200800	MCSORLEY KENNETH L&JOYCE M			4728 JUMANO AVE	SAN DIEGO CA			92117	6071	MOUNTAIN MEADOW		SEC 30-13-4E*SWQ*(EX RD)SLY PAR PER ROS 7437 IN W H OF\	6448993.815	1947537.346	Private
253	2901420300	KEYES MOLLIE I			P O BOX 2516	JULIAN CA			92036	6050	ENGINEERS	RD	PAR 3*(EX ST)\	6445153.155	1949241.745	Private
254	2900503600	UNITED STATES OF AMERICA FOREST SERVICE			PUBLIC AGENCY				0	0	EAGLE PEAK	RD	SEC 22-13-3E*SEQ*DOC01-890300 IN S H OF\	6436985.002	1951905.982	UNITED STATES OF AMERICA FOREST SERVICE
255	2891911100	OLFE FAMILY REVOCABLE TRUST 11-19-10			P O BOX 2106	JULIAN CA			92036	4790	BOULDER CREEK	RD	PAR 4*(EX ST)\	6442766.807	1959181.953	Private
256	2902302800	STABENAU JOAN C LIVING TRUST			7426 LANTANA TER	CARLSBAD CA			92011	7079	ENGINEERS	RD	SEC 25-13-3E*SEQ*0.89 AC M/L IN SEQ OF\	6448307.588	1946915.198	Private
257	2891910200	TELLAM WILLIAM S&MILDRED E FAMILY TRUST 08-18-93			P O BOX 1063	JULIAN CA			92036	0	EAGLE PEAK	RD	PAR 2*(EX ST)\	6441042.735	1959811.819	Private
258	2901411000	UNITED STATES OF AMERICA			PUBLIC AGENCY				0	17158	BOULDER CREEK	RD	SEC 26-13-2E*NEQ*1.00 AC M/L IN SEQ OF\	6443500.711	1949800.419	UNITED STATES OF AMERICA
259	3331101800	STRINE 1995 FAMILY TRUST 07-19-95			7024 BALLINGER AVE	SAN DIEGO CA			92119	0			SEC 15-14-3E*NW 1/4 OF*POR*	6435124.472	1930066.928	Private
260	3330610300	UNITED STATES OF AMERICA NATIONAL FOREST			PUBLIC AGENCY				0	0			SEC 10-14-3E*N H*156.46 AC M/L IN S H OF\	6435818.222	1933961.384	UNITED STATES OF AMERICA NATIONAL FOREST
261	3330600400	PETERSON DOUGLAS	PETERSON TRUST 11-08-00	PETERSON DAVID	1286 JOHNSON AVE	SAN DIEGO CA			92103	0	BOULDER CREEK	RD	SEC 10-14-3E*SEQ*BOULDER CREEK MINE IN\	6436415.69	1931476.32	Private
262	2901420500	BANNISTER FAMILY EXEMPTION 1992 TRUST 06-30-92			19242 MCLAREN LN	HUNTINGTON BEACH CA			92646	0	ENGINEERS	RD	SEC 25-13-3E*S H*PAR 3 PER DOC88-123002 IN\	6446451.283	1947762.364	Private
263	3330601200	DYER ALEC S	MARKS GARY JR	MARKS ROBERT	C/O STEVEN T DYER	13347 RUSSET LEAF LN	SAN DIEGO CA		92129	0	BOULDER CREEK	RD	SEC 10-14-3E*POR*	6435097.676	1930807.657	Private
264	2902300400	HULTMAN WILLIAM B&LISA C REVOCABLE TRUST 05-05-99			9582 PINO DR	LAKESIDE CA			92040	15910	STONEY	LANE	SEC 30-13-4E*3.18 AC M/L IN SEC 25-13-3E&IN\	6448538.972	1946812.819	Private
265	2902201700	TSCHUMPERLIN WILLIAM J TRUST 05-22-07			P O BOX 36	JULIAN CA			92036	6639	ENGINEER	RD	SEC 25-13-3E*SEQ*MOST SLY 1.00 AC PAR PER ROS 7490 IN\	6448143.115	1947766.967	Private

266	2892801100	GIRL SCOUTS SAN DIEGO-IMPERIAL COUNCIL INC			1231 UPAS ST	SAN DIEGO CA			92103	4949	PINE HILLS	RD	LOT 232*(EX RD WID)\	6445508.879	1957427.397	Private
267	2900713600	DOWNING FAMILY TRUST 05-07-98			28881 SUNSET RD	VALLEY CENTER CA			92082	0	ENGINEERS	RD	SEC 24-13-3E*SWQ*PAR E PER DOC95-165038 IN SEQ OF\	6445763.243	1951970.172	Private
268	2902302900	WALKER DONALD M JR TR			P O BOX 1057	ALPINE CA			91903	7153	ENGINEERS	RD	SEC 25-13-3E*SEQ*(EX RD)DOC83-158034 IN\	6448480.153	1947092.777	Private
269	2902300700	OHLEIRICH WILLIAM H			P O BOX 1155	RAMONA CA			92065	6880	ENGINEERS	RD	SEC 36-13-3E*N H*(EX RD)DOC254629REC71 IN N H OF N H OF\	6448078.947	1945508.891	Private

